

C:\temp\NH\DOT_Typell_Final\Typell_StudyAreas_LOCAL_noWeb.mxd

0 100 200 400 Feet

Study Areas

- Ineligible for Type II
- Eligible for Type II
- Existing Barrier
- Prior Noise Barrier Study Area
- Existing Noise Barrier in Study Area

Loudest-hour Noise Level

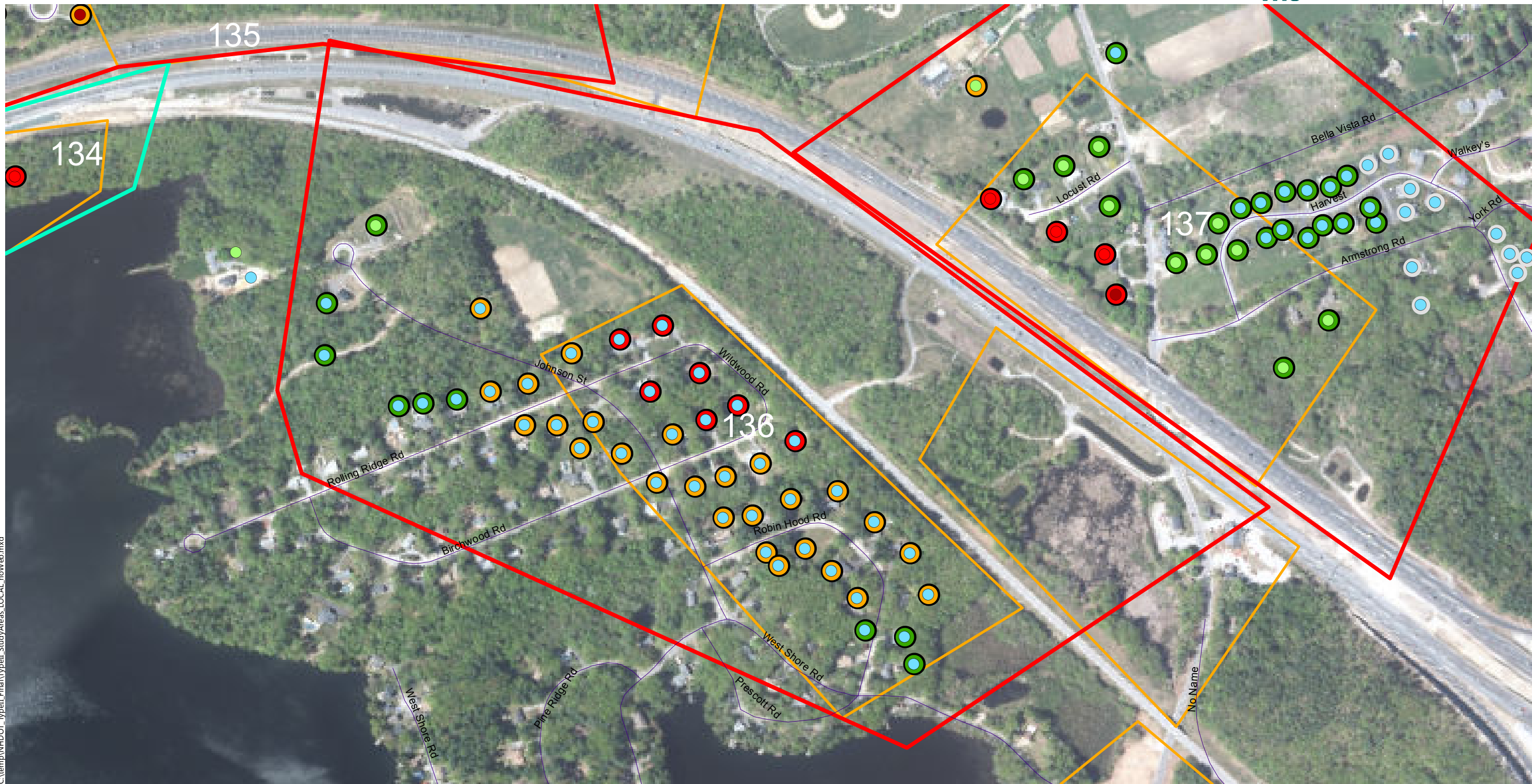
- <61 dBA Leq
- 61 to 65 dBA Leq
- 66 to 70 dBA Leq (Impact)
- >70 dBA Leq (Impact)

Insertion Loss (25-ft Barrier)

- Less than 5 dB
- 5 to 6 dB (Benefit)
- 7 to 9 dB (Benefit/Feasible)
- 10+ dB (Benefit/Design Goal)

Type II Noise Program Development | Type II Study Areas

Barrier Area: 135
Roadway: I-93
Mile Posts Start/End: 127.1 to 127.7
Barrier Side SB Cost: \$ 0
DEI: 2991 DEI Criteria: 1400
Windham, New Hampshire
Ineligible (Not Feasible/Reasonable in Prior Type I)



C:\temp\NH\DOT_TypeII_Final\Typell_StudyAreas_LOCAL_noWeb.mxd

0 100 200 400 Feet

Study Areas

- Ineligible for Type II
- Eligible for Type II
- Existing Barrier
- Prior Noise Barrier Study Area
- Existing Noise Barrier in Study Area

Loudest-hour Noise Level

- <61 dBA Leq
- 61 to 65 dBA Leq
- 66 to 70 dBA Leq (Impact)
- >70 dBA Leq (Impact)

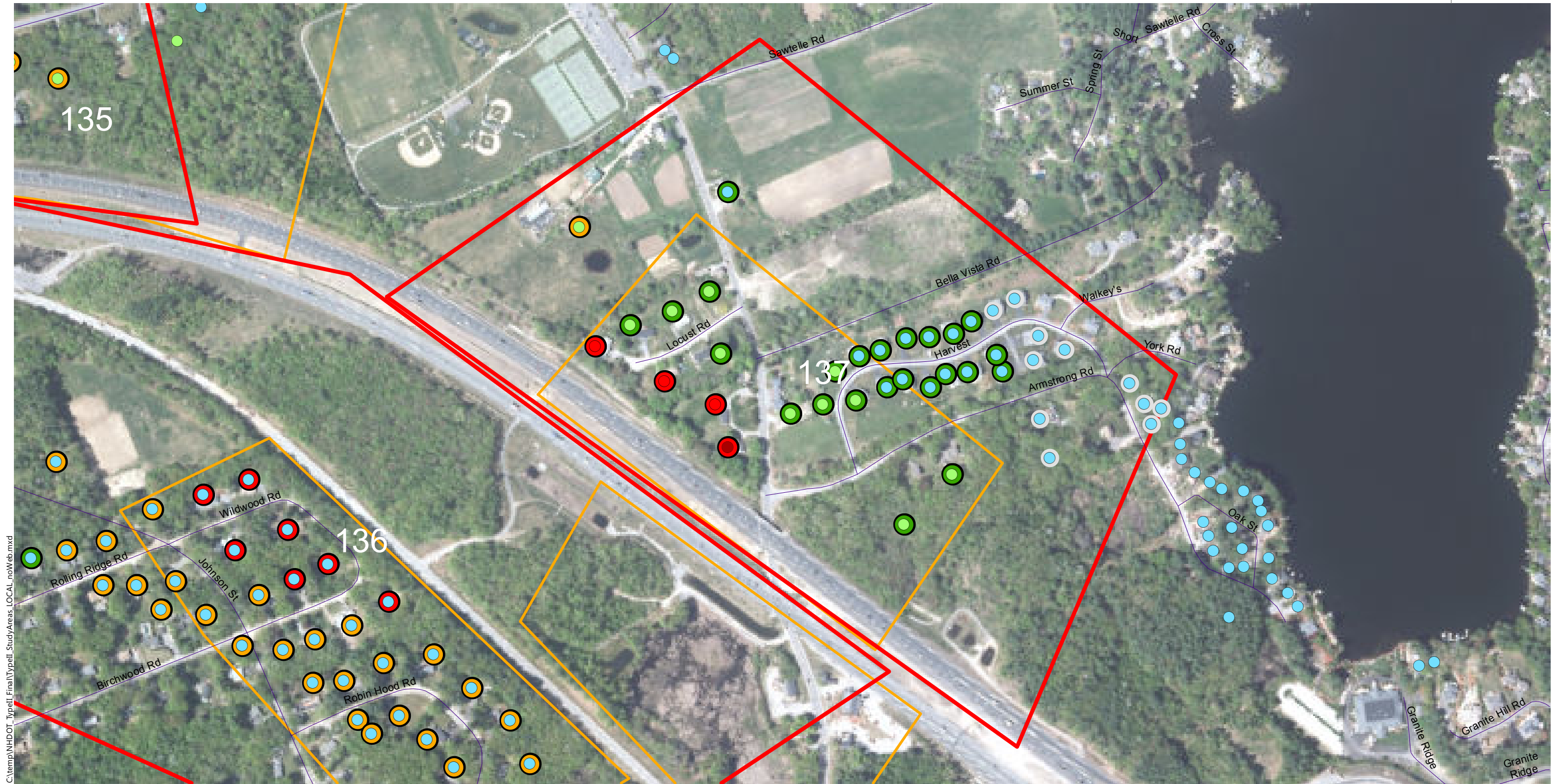
Insertion Loss (25-ft Barrier)

- Less than 5 dB
- 5 to 6 dB (Benefit)
- 7 to 9 dB (Benefit/Feasible)
- 10+ dB (Benefit/Design Goal)

Type II Noise Program Development

Type II Study Areas

Barrier Area: 136
Roadway: I-93
Mile Posts Start/End: 4.6 to 5.4
Barrier Side NB Cost: \$ 0
DEI: 1828 DEI Criteria: 1400
Windham, New Hampshire
Ineligible (Not Feasible/Reasonable in Prior Type I)



C:\temp\NH\DOT_TypeII_Final\Typell_StudyAreas_LOCAL_noWeb.mxd

0 100 200 400 Feet

Study Areas

- Ineligible for Type II
- Eligible for Type II
- Existing Barrier
- Prior Noise Barrier Study Area
- Existing Noise Barrier in Study Area

Loudest-hour Noise Level

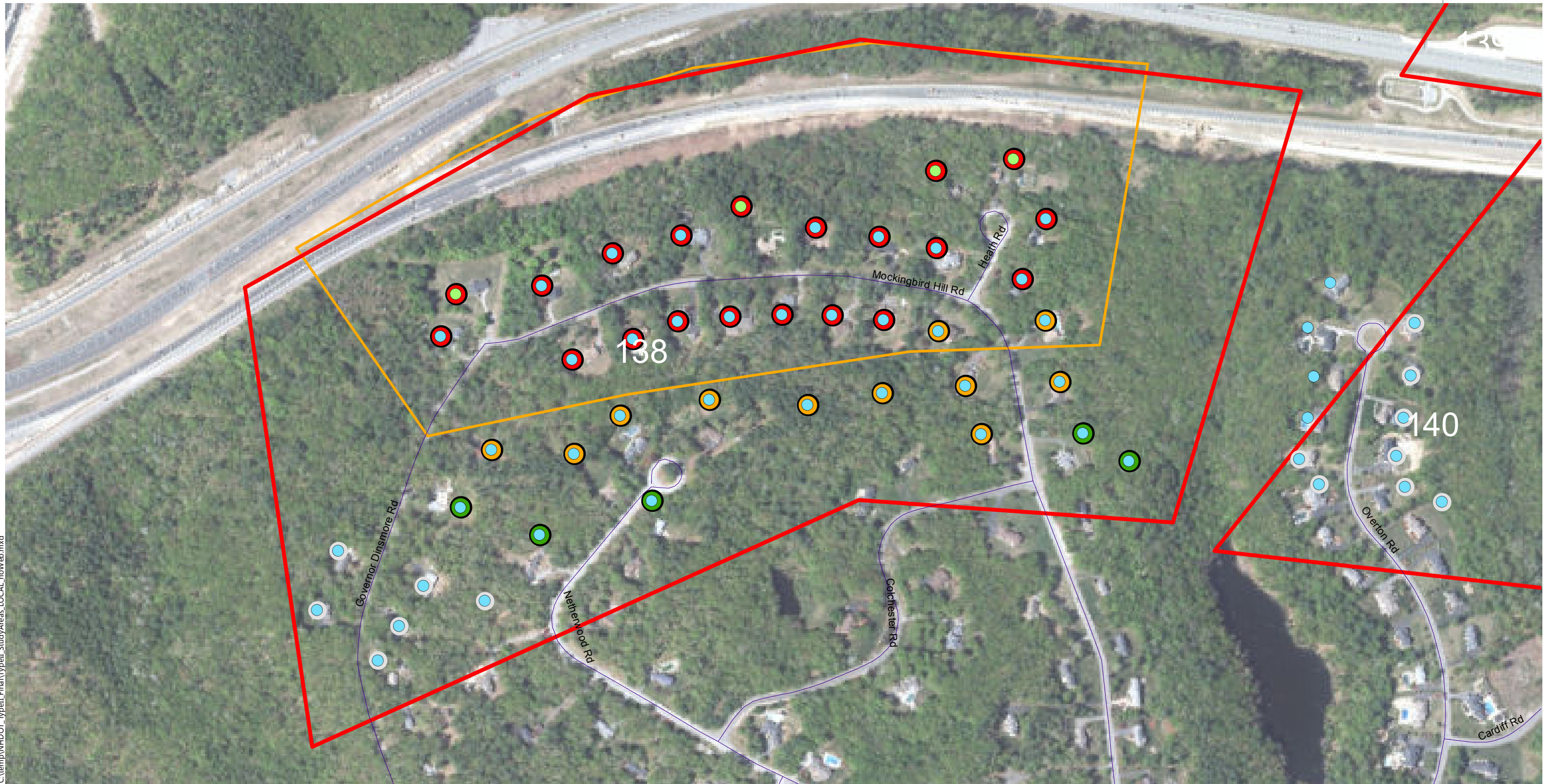
- <61 dBA Leq
- 61 to 65 dBA Leq
- 66 to 70 dBA Leq (Impact)
- >70 dBA Leq (Impact)

Insertion Loss (25-ft Barrier)

- Less than 5 dB
- 5 to 6 dB (Benefit)
- 7 to 9 dB (Benefit/Feasible)
- 10+ dB (Benefit/Design Goal)

Type II Noise Program Development | Type II Study Areas

Barrier Area: 137
Roadway: I-93
Mile Posts Start/End: 126.4 to 126.9
Barrier Side SB Cost: \$ 0
DEI: 1253 DEI Criteria: 1400
Windham, New Hampshire
Ineligible (Not Feasible/Reasonable in Prior Type I)



C:\temp\NH\DOT_Typell_Final\Typell_StudyAreas_LOCAL_noWeb.mxd

0 100 200 400 Feet

Study Areas

- Ineligible for Type II
- Eligible for Type II
- Existing Barrier
- Prior Noise Barrier Study Area
- Existing Noise Barrier in Study Area

Loudest-hour Noise Level

- <61 dBA Leq
- 61 to 65 dBA Leq
- 66 to 70 dBA Leq (Impact)
- >70 dBA Leq (Impact)

Insertion Loss (25-ft Barrier)

- Less than 5 dB
- 5 to 6 dB (Benefit)
- 7 to 9 dB (Benefit/Feasible)
- 10+ dB (Benefit/Design Goal)

Type II Noise Program Development

Type II Study Areas

Barrier Area: 138
Roadway: I-93
Mile Posts Start/End: 6.4 to 7.1
Barrier Side NB Cost: \$ 0
DEI: 1507 DEI Criteria: 1400
Windham, New Hampshire
Ineligible (Not Feasible/Reasonable in Prior Type I)



C:\temp\NH\DOT_Typell_Final\Typell_StudyAreas_LOCAL_noWeb.mxd

0 100 200 400 Feet



Study Areas

- Ineligible for Type II
- Eligible for Type II
- Existing Barrier
- Prior Noise Barrier Study Area
- Existing Noise Barrier in Study Area

Loudest-hour Noise Level

- <61 dBA Leq
- 61 to 65 dBA Leq
- 66 to 70 dBA Leq (Impact)
- >70 dBA Leq (Impact)

Insertion Loss (25-ft Barrier)

- Less than 5 dB
- 5 to 6 dB (Benefit)
- 7 to 9 dB (Benefit/Feasible)
- 10+ dB (Benefit/Design Goal)

Type II Noise Program Development | Type II Study Areas

Barrier Area: 139
Roadway: I-93
Mile Posts Start/End: 123.9 to 124.6
Barrier Side SB Cost: \$ 0
DEI: 2068 DEI Criteria: 1400
Windham, New Hampshire
Ineligible (No Impact)



C:\temp\NH\DOT_TypeII_Final\TypeII_StudyAreas_LOCAL_noWeb.mxd

0 100 200 400 Feet

Study Areas

- Ineligible for Type II
- Eligible for Type II
- Existing Barrier
- Prior Noise Barrier Study Area
- Existing Noise Barrier in Study Area

Loudest-hour Noise Level

- <61 dBA Leq
- 61 to 65 dBA Leq
- 66 to 70 dBA Leq (Impact)
- >70 dBA Leq (Impact)

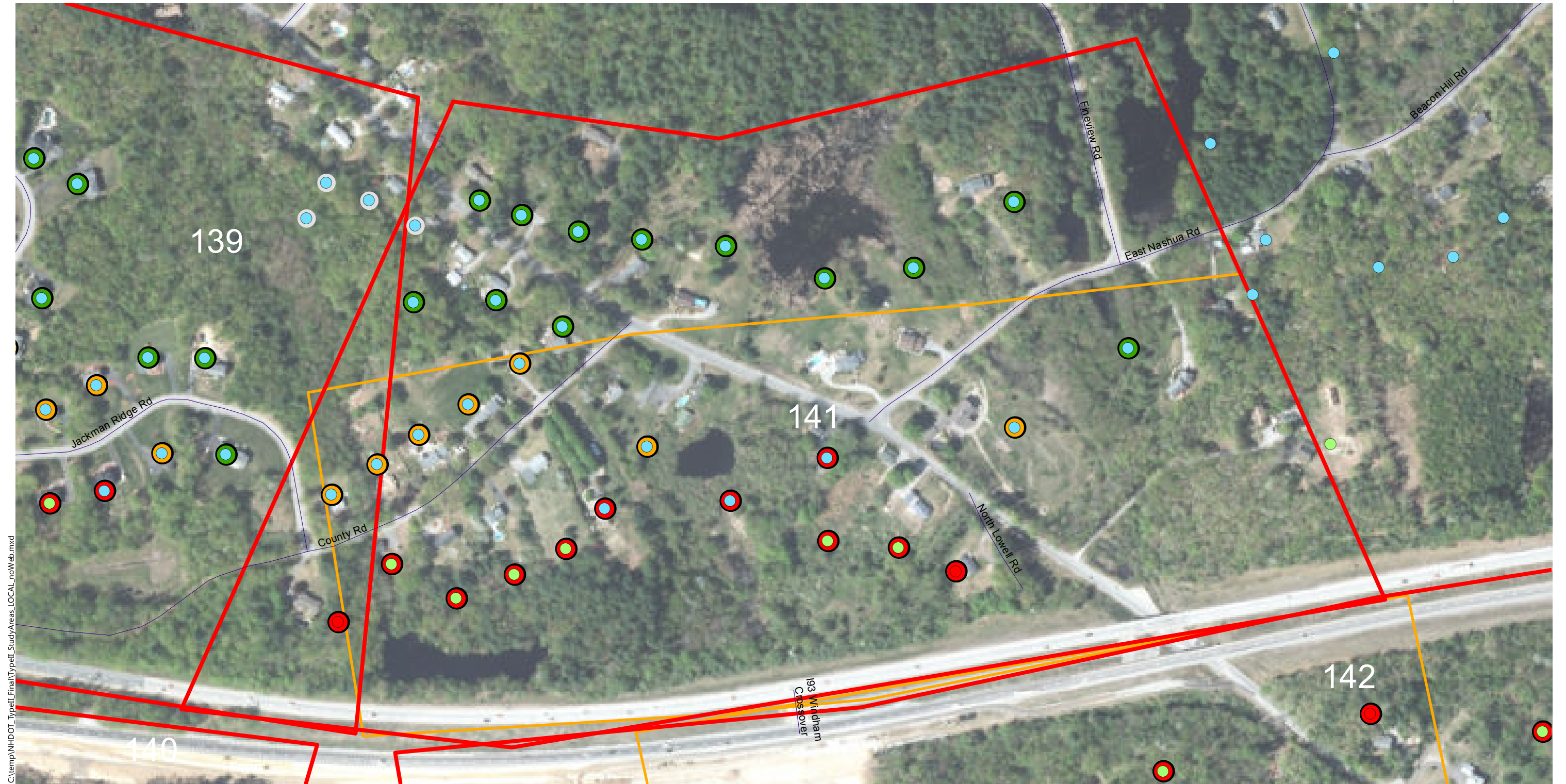
Insertion Loss (25-ft Barrier)

- Less than 5 dB
- 5 to 6 dB (Benefit)
- 7 to 9 dB (Benefit/Feasible)
- 10+ dB (Benefit/Design Goal)

Type II Noise Program Development

Type II Study Areas

Barrier Area: 140
Roadway: I-93
Mile Posts Start/End: 7.3 to 7.9
Barrier Side NB Cost: \$ 0
DEI: 2264 DEI Criteria: 1400
Windham, New Hampshire
Ineligible (No Impact)



C:\temp\NH\DOT_TypeII_Final\TypeII_StudyAreas_LOCAL_noWeb.mxd

0 100 200 400 Feet

Study Areas

- Ineligible for Type II
- Eligible for Type II
- Existing Barrier
- Prior Noise Barrier Study Area
- Existing Noise Barrier in Study Area

Loudest-hour Noise Level

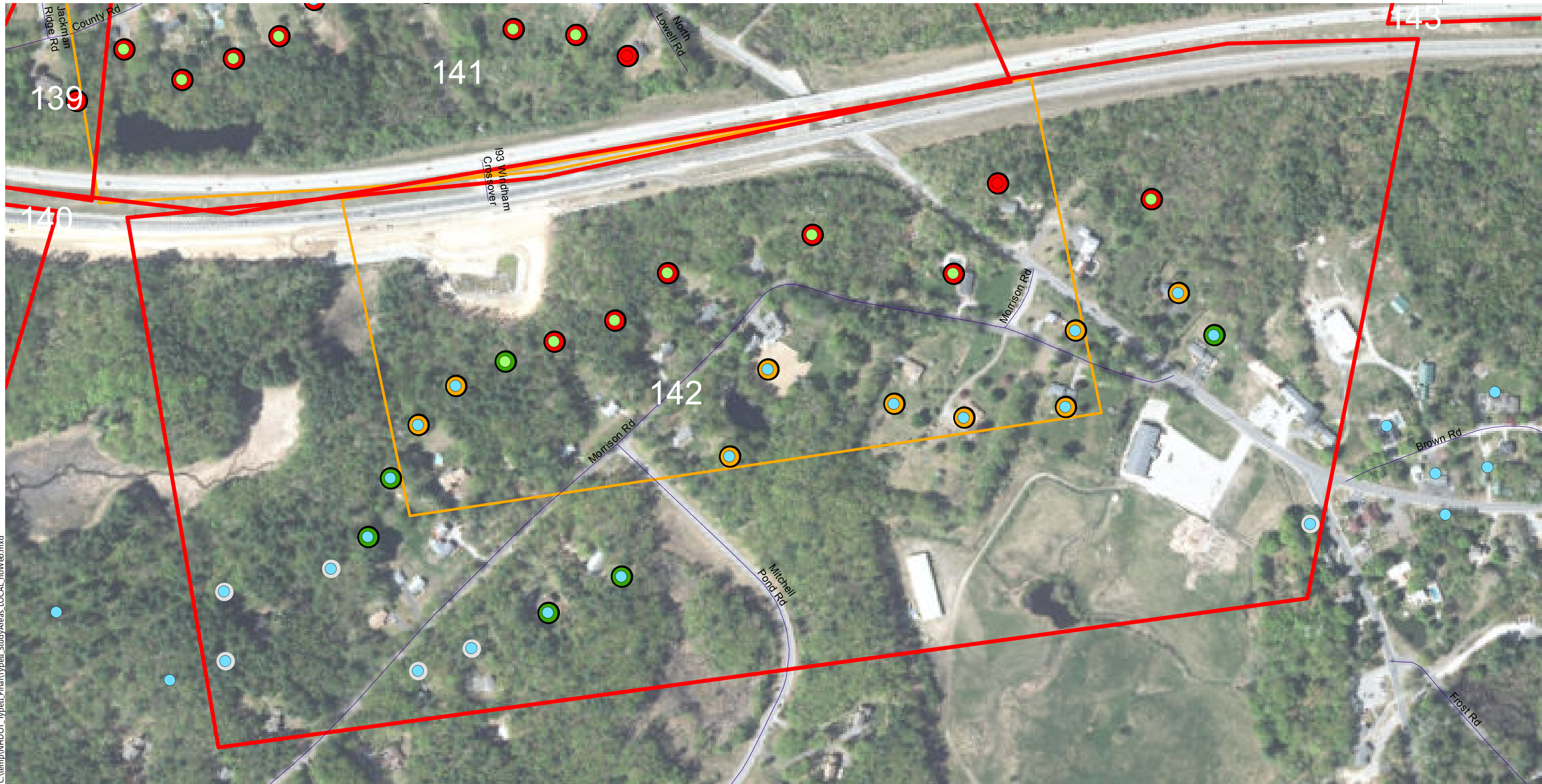
- <61 dBA Leq
- 61 to 65 dBA Leq
- 66 to 70 dBA Leq (Impact)
- >70 dBA Leq (Impact)

Insertion Loss (25-ft Barrier)

- Less than 5 dB
- 5 to 6 dB (Benefit)
- 7 to 9 dB (Benefit/Feasible)
- 10+ dB (Benefit/Design Goal)

Type II Noise Program Development | Type II Study Areas

Barrier Area: 141
Roadway: I-93
Mile Posts Start/End: 123.4 to 124
Barrier Side SB Cost: \$ 0
DEI: 2120 DEI Criteria: 1400
Windham, New Hampshire
Ineligible (Not Feasible/Reasonable in Prior Type I)



C:\temp\NH\DOT_TypeII_Final\TypeII_StudyAreas_LOCAL_noWeb.mxd

0 100 200 400 Feet

Study Areas

- Ineligible for Type II
- Eligible for Type II
- Existing Barrier
- Prior Noise Barrier Study Area
- Existing Noise Barrier in Study Area

Loudest-hour Noise Level

- <61 dBA Leq
- 61 to 65 dBA Leq
- 66 to 70 dBA Leq (Impact)
- >70 dBA Leq (Impact)

Insertion Loss (25-ft Barrier)

- Less than 5 dB
- 5 to 6 dB (Benefit)
- 7 to 9 dB (Benefit/Feasible)
- 10+ dB (Benefit/Design Goal)

Type II Noise Program Development

Type II Study Areas

Barrier Area: 142
Roadway: I-93
Mile Posts Start/End: 8 to 8.7
Barrier Side NB Cost: \$ 0
DEI: 3069 DEI Criteria: 1400
Windham, New Hampshire
Ineligible (Not Feasible/Reasonable in Prior Type I)