

C:\temp\NHDOT_Typell_Final\Typell_StudyAreas_LOCAL_noWeb.mxd

0 100 200 400 Feet

Study Areas

- Ineligible for Type II
- Eligible for Type II
- Existing Barrier
- Prior Noise Barrier Study Area
- Existing Noise Barrier in Study Area

Loudest-hour Noise Level

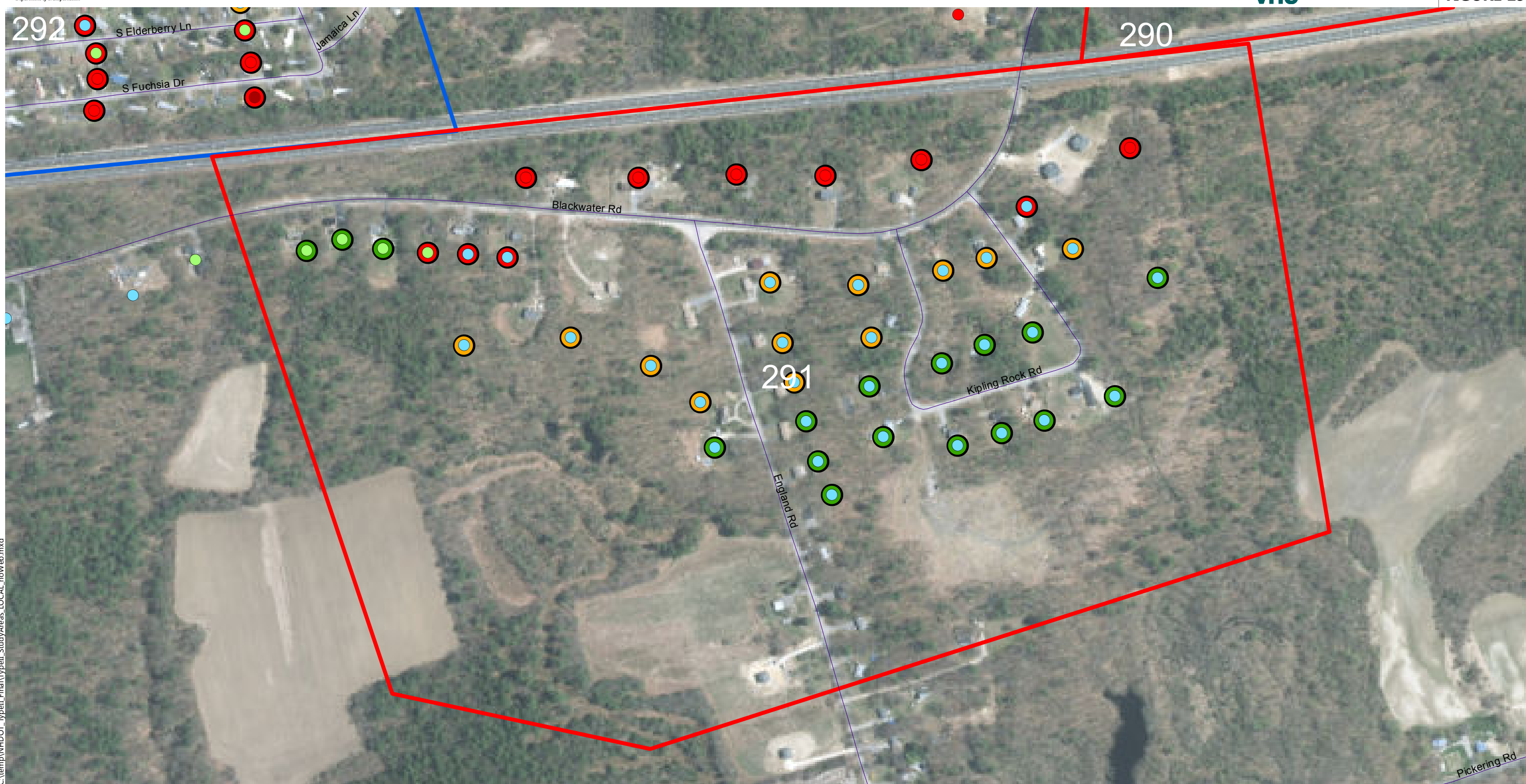
- <61 dBA Leq
- 61 to 65 dBA Leq
- 66 to 70 dBA Leq (Impact)
- >70 dBA Leq (Impact)

Insertion Loss (25-ft Barrier)

- Less than 5 dB
- 5 to 6 dB (Benefit)
- 7 to 9 dB (Benefit/Feasible)
- 10+ dB (Benefit/Design Goal)

Type II Noise Program Development | Type II Study Areas

Barrier Area: 290
Roadway: Spaulding
Mile Posts Start/End: 15.1 to 15.8
Barrier Side NB Cost: \$ 0
DEI: 1719 DEI Criteria: 1600
Rochester, New Hampshire
Ineligible (DEI)



C:\temp\NH\DOT_Typell_Final\Typell_StudyAreas_LOCAL_noWeb.mxd

0 100 200 400 Feet

Study Areas

- Ineligible for Type II
- Eligible for Type II
- Existing Barrier
- Prior Noise Barrier Study Area
- Existing Noise Barrier in Study Area

Loudest-hour Noise Level

- <61 dBA Leq
- 61 to 65 dBA Leq
- 66 to 70 dBA Leq (Impact)
- >70 dBA Leq (Impact)

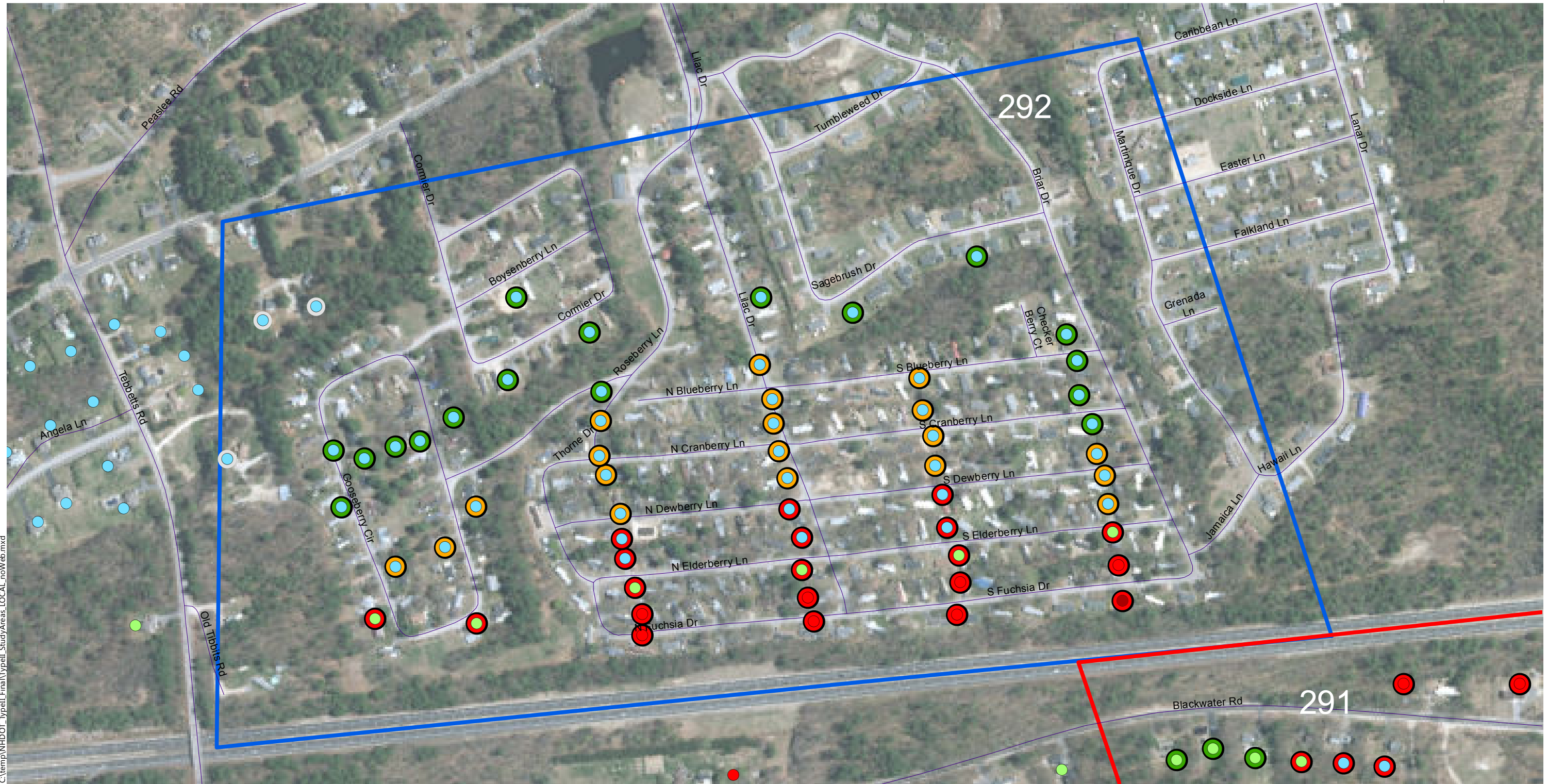
Insertion Loss (25-ft Barrier)

- Less than 5 dB
- 5 to 6 dB (Benefit)
- 7 to 9 dB (Benefit/Feasible)
- 10+ dB (Benefit/Design Goal)

Type II Noise Program Development

Type II Study Areas

Barrier Area: 291
Roadway: Spaulding
Mile Posts Start/End: 6.4 to 7.1
Barrier Side SB Cost: \$ 0
DEI: 1654 DEI Criteria: 1500
Rochester, New Hampshire
Ineligible (DEI)



C:\temp\NH\DOT_Typell_Final\Typell_StudyAreas_LOCAL_noWeb.mxd

0 100 200 400 Feet

Study Areas

- Ineligible for Type II
- Eligible for Type II
- Existing Barrier
- Prior Noise Barrier Study Area
- Existing Noise Barrier in Study Area

Loudest-hour Noise Level

- <61 dBA Leq
- 61 to 65 dBA Leq
- 66 to 70 dBA Leq (Impact)
- >70 dBA Leq (Impact)

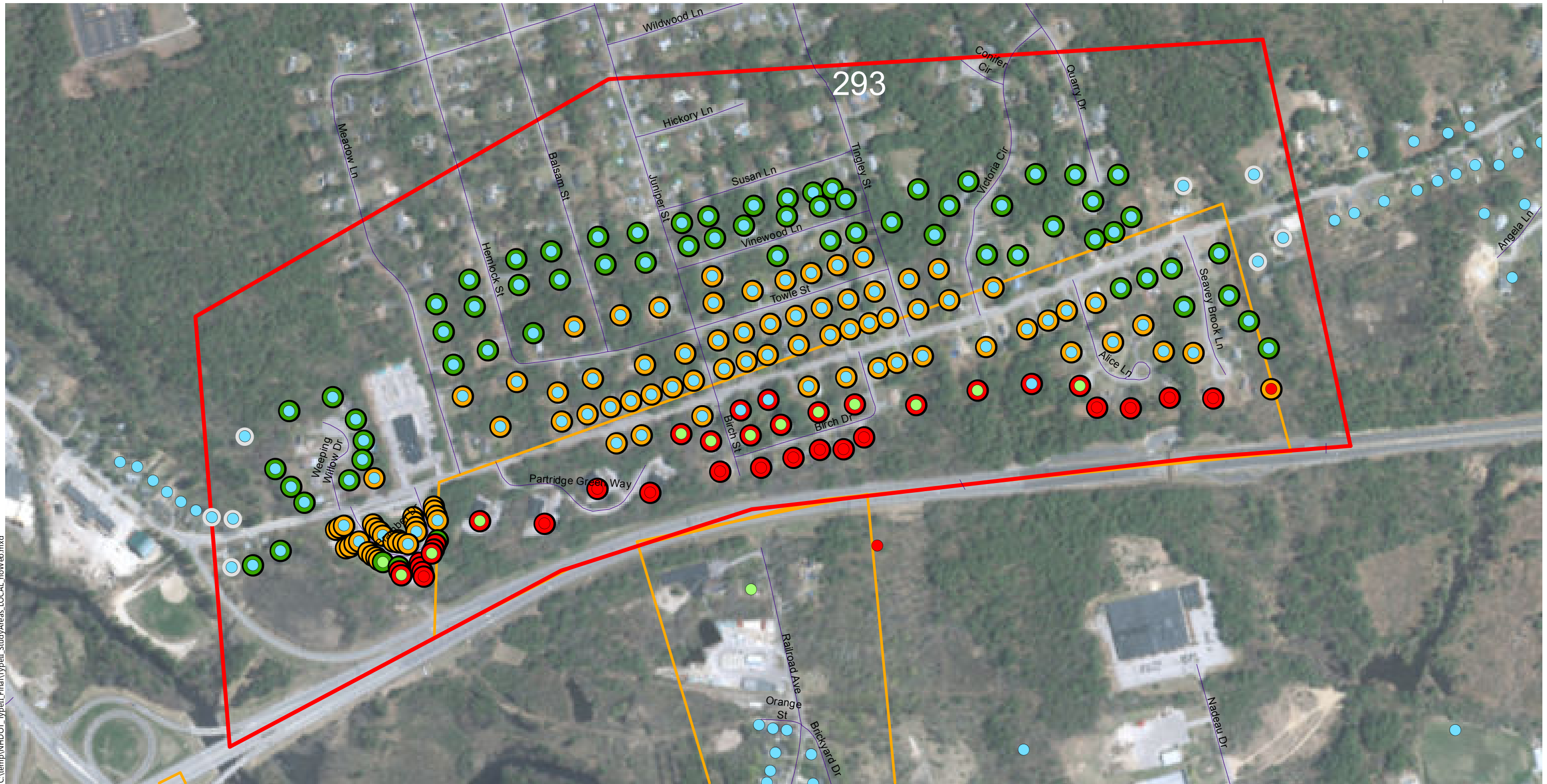
Insertion Loss (25-ft Barrier)

- Less than 5 dB
- 5 to 6 dB (Benefit)
- 7 to 9 dB (Benefit/Feasible)
- 10+ dB (Benefit/Design Goal)

Type II Noise Program Development

Type II Study Areas

Barrier Area: 292
Roadway: Spaulding
Mile Posts Start/End: 16.2 to 16.9
Barrier Side NB Cost: \$ 2910000
DEI: 366 DEI Criteria: 1600
Rochester, New Hampshire
Eligible



C:\temp\NH\DOT_TypeII_Final\TypeII_StudyAreas_LOCAL_noWeb.mxd

0 100 200 400 Feet

Study Areas

- Ineligible for Type II
- Eligible for Type II
- Existing Barrier
- Prior Noise Barrier Study Area
- Existing Noise Barrier in Study Area

Loudest-hour Noise Level

- <61 dBA Leq
- 61 to 65 dBA Leq
- 66 to 70 dBA Leq (Impact)
- >70 dBA Leq (Impact)

Insertion Loss (25-ft Barrier)

- Less than 5 dB
- 5 to 6 dB (Benefit)
- 7 to 9 dB (Benefit/Feasible)
- 10+ dB (Benefit/Design Goal)

Type II Noise Program Development

Type II Study Areas

Barrier Area: 293
Roadway: Spaulding
Mile Posts Start/End: 17.2 to 18.3
Barrier Side NB Cost: \$ 0
DEI: 521 DEI Criteria: 1600
Rochester, New Hampshire
Ineligible (Not Feasible/Reasonable in Prior Type I)



C:\temp\NHDOT_Typell_Final\Typell_StudyAreas_LOCAL_noWeb.mxd

0 100 200 400 Feet

Study Areas

- Ineligible for Type II
- Eligible for Type II
- Existing Barrier
- Prior Noise Barrier Study Area
- Existing Noise Barrier in Study Area

Loudest-hour Noise Level

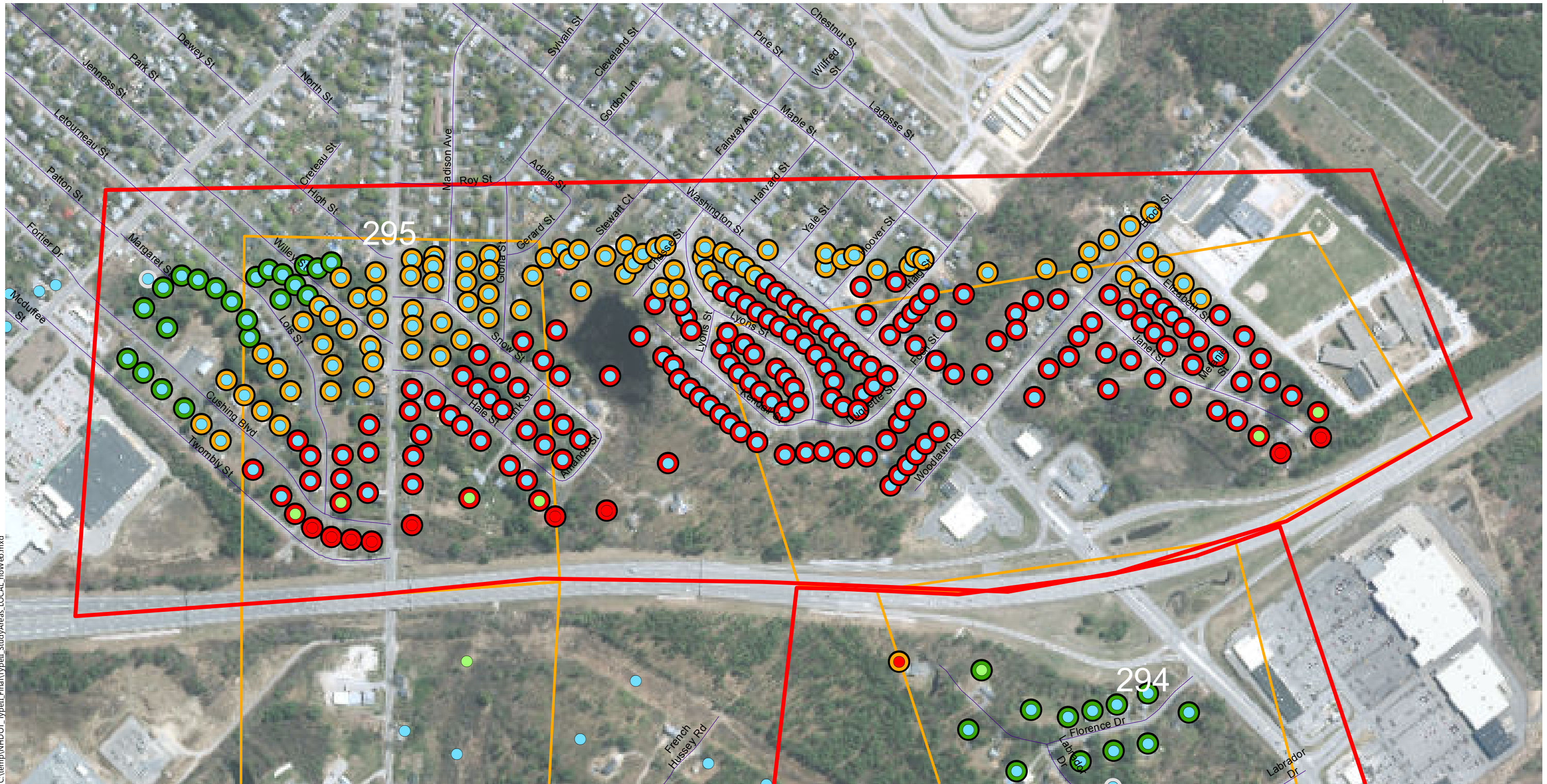
- <61 dBA Leq
- 61 to 65 dBA Leq
- 66 to 70 dBA Leq (Impact)
- >70 dBA Leq (Impact)

Insertion Loss (25-ft Barrier)

- Less than 5 dB
- 5 to 6 dB (Benefit)
- 7 to 9 dB (Benefit/Feasible)
- 10+ dB (Benefit/Design Goal)

Type II Noise Program Development | Type II Study Areas

Barrier Area: 294
Roadway: Spaulding
Mile Posts Start/End: 2.8 to 3.3
Barrier Side SB Cost: \$ 0
DEI: 4736 DEI Criteria: 1400
Rochester, New Hampshire
Ineligible (Not Feasible/Reasonable in Prior Type I)



C:\temp\NH\DOT_Typell\FinalTypell_StudyAreas_LOCAL_noWeb.mxd

0 100 200 400 Feet

Study Areas

- Ineligible for Type II
- Eligible for Type II
- Existing Barrier
- Prior Noise Barrier Study Area
- Existing Noise Barrier in Study Area

Loudest-hour Noise Level

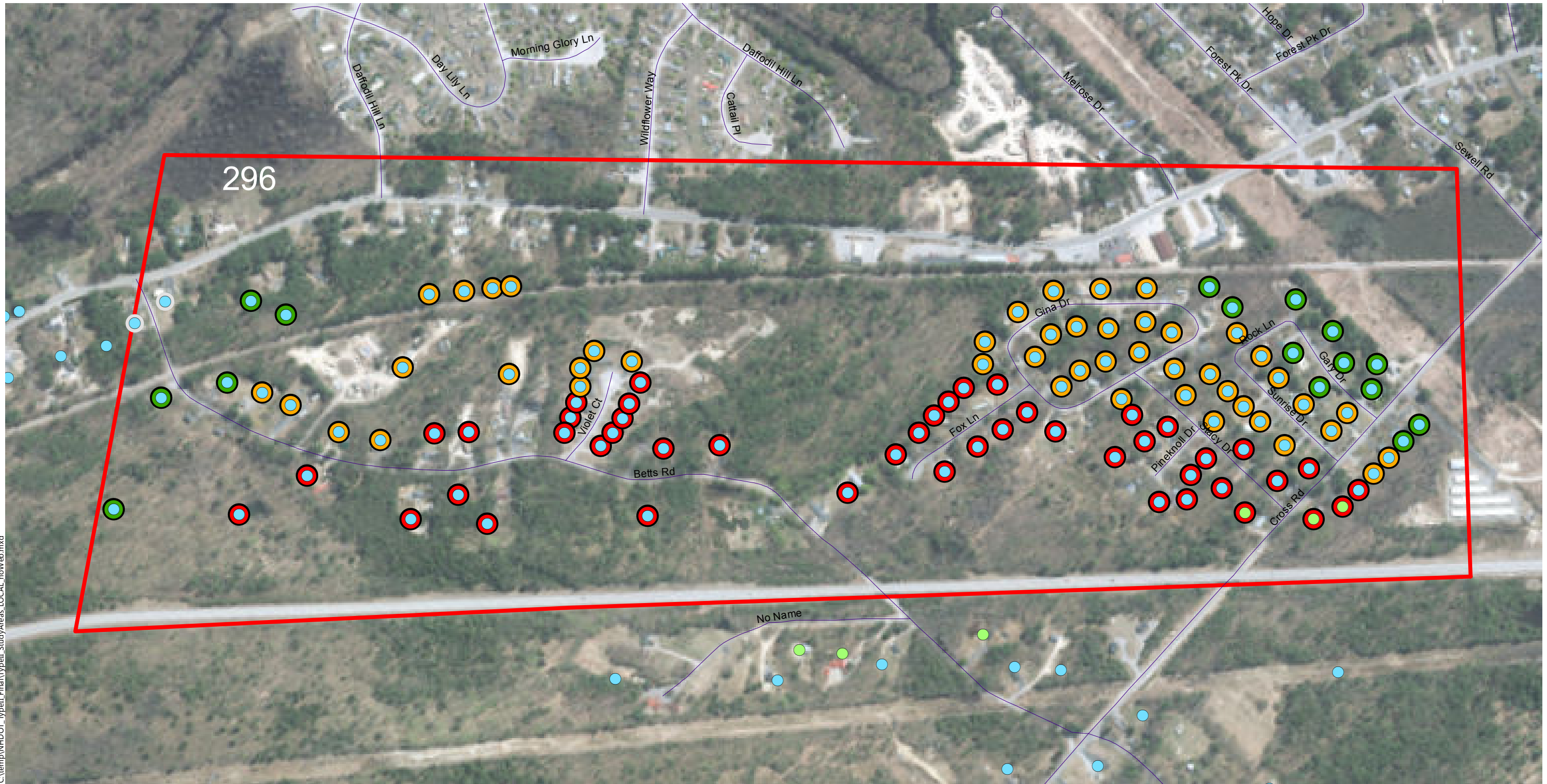
- <61 dBA Leq
- 61 to 65 dBA Leq
- 66 to 70 dBA Leq (Impact)
- >70 dBA Leq (Impact)

Insertion Loss (25-ft Barrier)

- Less than 5 dB
- 5 to 6 dB (Benefit)
- 7 to 9 dB (Benefit/Feasible)
- 10+ dB (Benefit/Design Goal)

Type II Noise Program Development | Type II Study Areas

Barrier Area: 295
Roadway: Spaulding
Mile Posts Start/End: 19.3 to 20.5
Barrier Side NB Cost: \$ 0
DEI: 517 DEI Criteria: 1700
Rochester, New Hampshire
Ineligible (Not Feasible/Reasonable in Prior Type I)



C:\temp\NH\DOT_Typell_Final\Typell_StudyAreas_LOCAL_noWeb.mxd

0 100200 400 Feet

Study Areas

- Ineligible for Type II
- Eligible for Type II
- Existing Barrier
- Prior Noise Barrier Study Area
- Existing Noise Barrier in Study Area

Loudest-hour Noise Level

- <61 dBA Leq
- 61 to 65 dBA Leq
- 66 to 70 dBA Leq (Impact)
- >70 dBA Leq (Impact)

Insertion Loss (25-ft Barrier)

- Less than 5 dB
- 5 to 6 dB (Benefit)
- 7 to 9 dB (Benefit/Feasible)
- 10+ dB (Benefit/Design Goal)

Type II Noise Program Development

Type II Study Areas

Barrier Area: 296
Roadway: Spaulding
Mile Posts Start/End: 23.7 to 24.9
Barrier Side NB Cost: \$ 0
DEI: 810 DEI Criteria: 1600
Rochester, New Hampshire
Ineligible (No Impact)