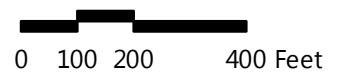


C:\temp\NH\DOT\_Typell\_Final\Typell\_StudyAreas\_LOCAL\_noWeb.mxd



**Study Areas**

- Ineligible for Type II
- Eligible for Type II
- Existing Barrier
- Prior Noise Barrier Study Area
- Existing Noise Barrier in Study Area

**Loudest-hour Noise Level**

- <61 dBA Leq
- 61 to 65 dBA Leq
- 66 to 70 dBA Leq (Impact)
- >70 dBA Leq (Impact)

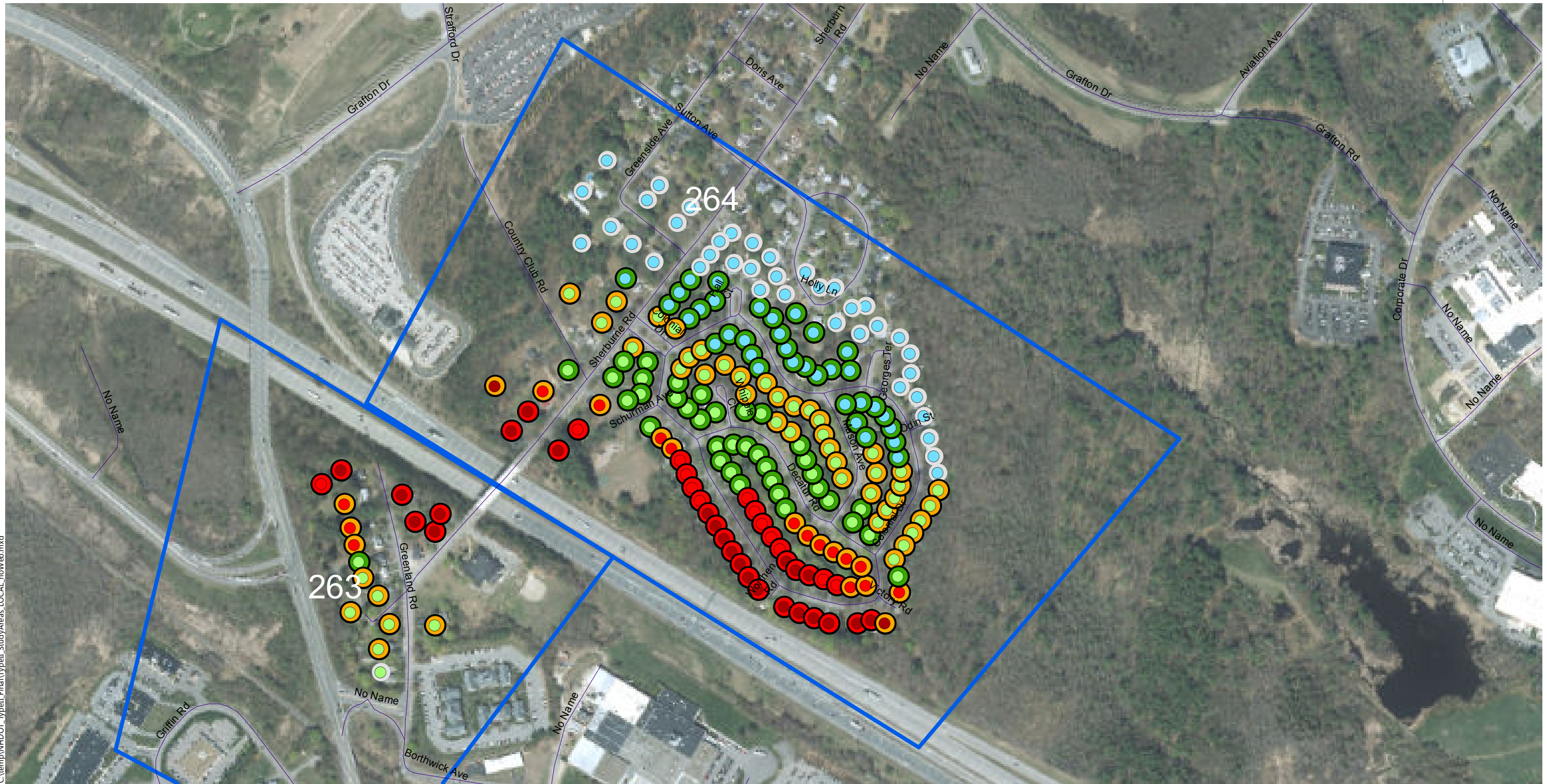
**Insertion Loss (25-ft Barrier)**

- Less than 5 dB
- 5 to 6 dB (Benefit)
- 7 to 9 dB (Benefit/Feasible)
- 10+ dB (Benefit/Design Goal)

**Type II Noise Program Development**

Type II Study Areas

**Barrier Area: 263**  
**Roadway: I-95**  
**Mile Posts Start/End: 12.9 to 13.3**  
**Barrier Side NB Cost: \$ 882000**  
**DEI: 1633      DEI Criteria: 1700**  
**Portsmouth, New Hampshire**  
**Eligible**



C:\temp\NH\DOT\_TypeII\_Final\Typell\_StudyAreas\_LOCAL\_noWeb.mxd

0 100 200 400 Feet

**Study Areas**

- Ineligible for Type II
- Eligible for Type II
- Existing Barrier
- Prior Noise Barrier Study Area
- Existing Noise Barrier in Study Area

**Loudest-hour Noise Level**

- <61 dBA Leq
- 61 to 65 dBA Leq
- 66 to 70 dBA Leq (Impact)
- >70 dBA Leq (Impact)

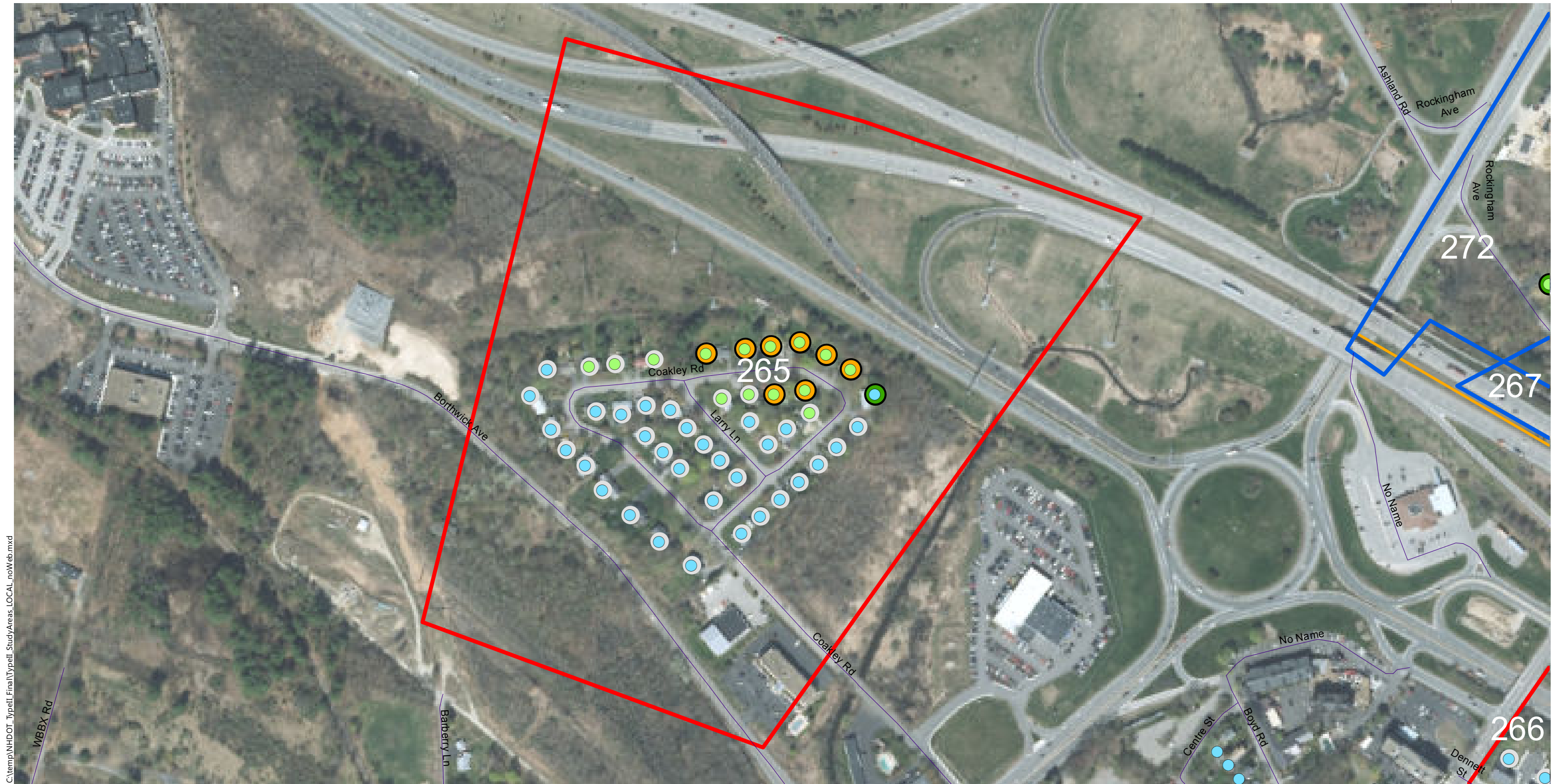
**Insertion Loss (25-ft Barrier)**

- Less than 5 dB
- 5 to 6 dB (Benefit)
- 7 to 9 dB (Benefit/Feasible)
- 10+ dB (Benefit/Design Goal)

**Type II Noise Program Development**

Type II Study Areas

**Barrier Area: 264**  
**Roadway: I-95**  
**Mile Posts Start/End: 2.6 to 3.1**  
**Barrier Side SB Cost: \$ 2115000**  
**DEI: 530 DEI Criteria: 1700**  
**Portsmouth, New Hampshire**  
**Eligible**



C:\temp\NH\DOT\_Typell\_Final\Typell\_StudyAreas\_LOCAL\_noWeb.mxd

0 100 200 400 Feet



**Study Areas**

- Ineligible for Type II
- Eligible for Type II
- Existing Barrier
- Prior Noise Barrier Study Area
- Existing Noise Barrier in Study Area

**Loudest-hour Noise Level**

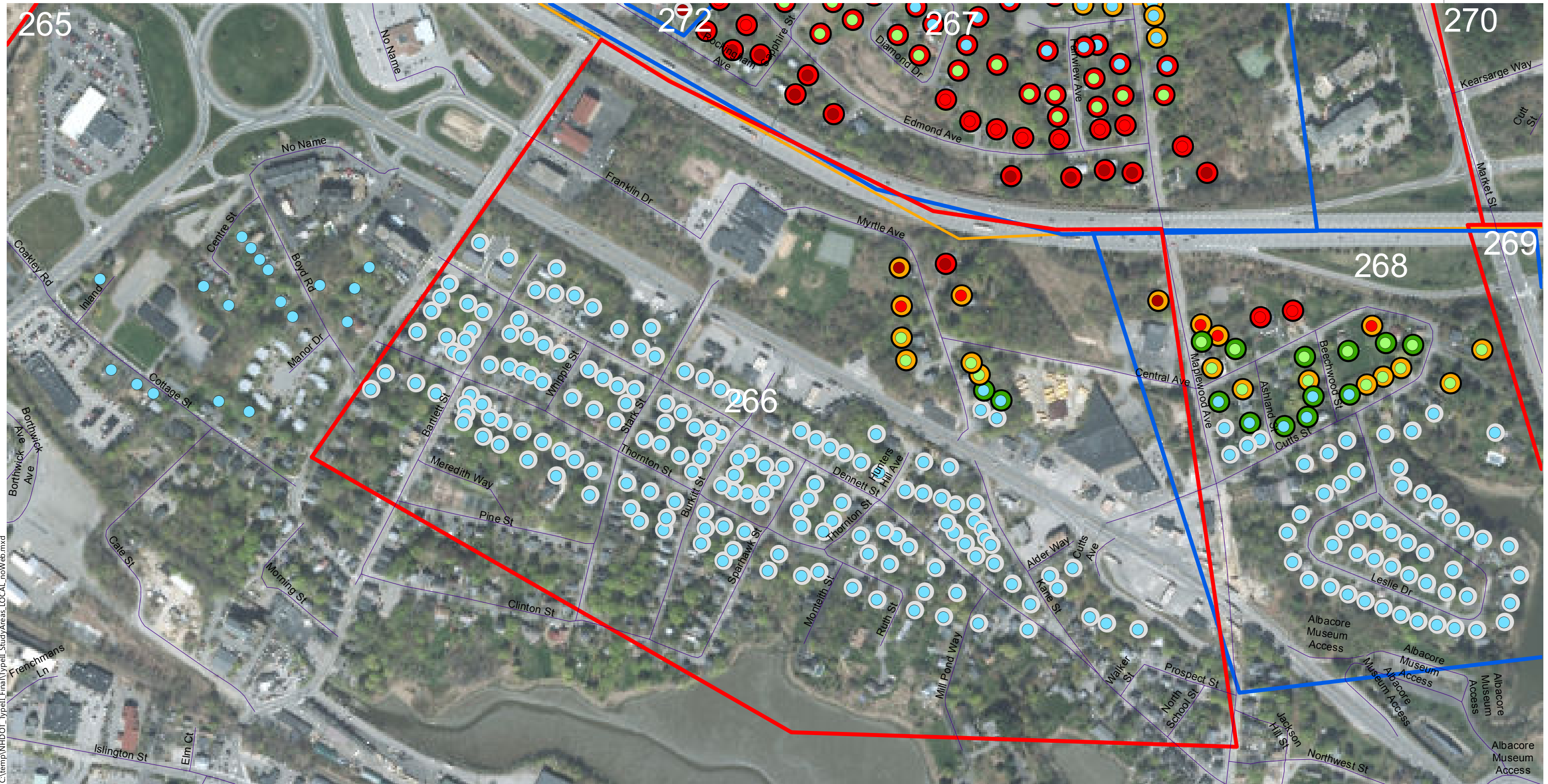
- <61 dBA Leq
- 61 to 65 dBA Leq
- 66 to 70 dBA Leq (Impact)
- >70 dBA Leq (Impact)

**Insertion Loss (25-ft Barrier)**

- Less than 5 dB
- 5 to 6 dB (Benefit)
- 7 to 9 dB (Benefit/Feasible)
- 10+ dB (Benefit/Design Goal)

**Type II Noise Program Development | Type II Study Areas**

**Barrier Area: 265**  
**Roadway: I-95**  
**Mile Posts Start/End: 14.1 to 14.4**  
**Barrier Side NB Cost: \$ 0**  
**DEI: 8950 DEI Criteria: 1700**  
**Portsmouth, New Hampshire**  
**Ineligible (No Impact)**



C:\temp\NH\DOT\_Typell\_Final\Typell\_StudyAreas\_LOCAL\_noWeb.mxd

0 100 200 400 Feet

**Study Areas**

- Ineligible for Type II
- Eligible for Type II
- Existing Barrier
- Prior Noise Barrier Study Area
- Existing Noise Barrier in Study Area

**Loudest-hour Noise Level**

- <61 dBA Leq
- 61 to 65 dBA Leq
- 66 to 70 dBA Leq (Impact)
- >70 dBA Leq (Impact)

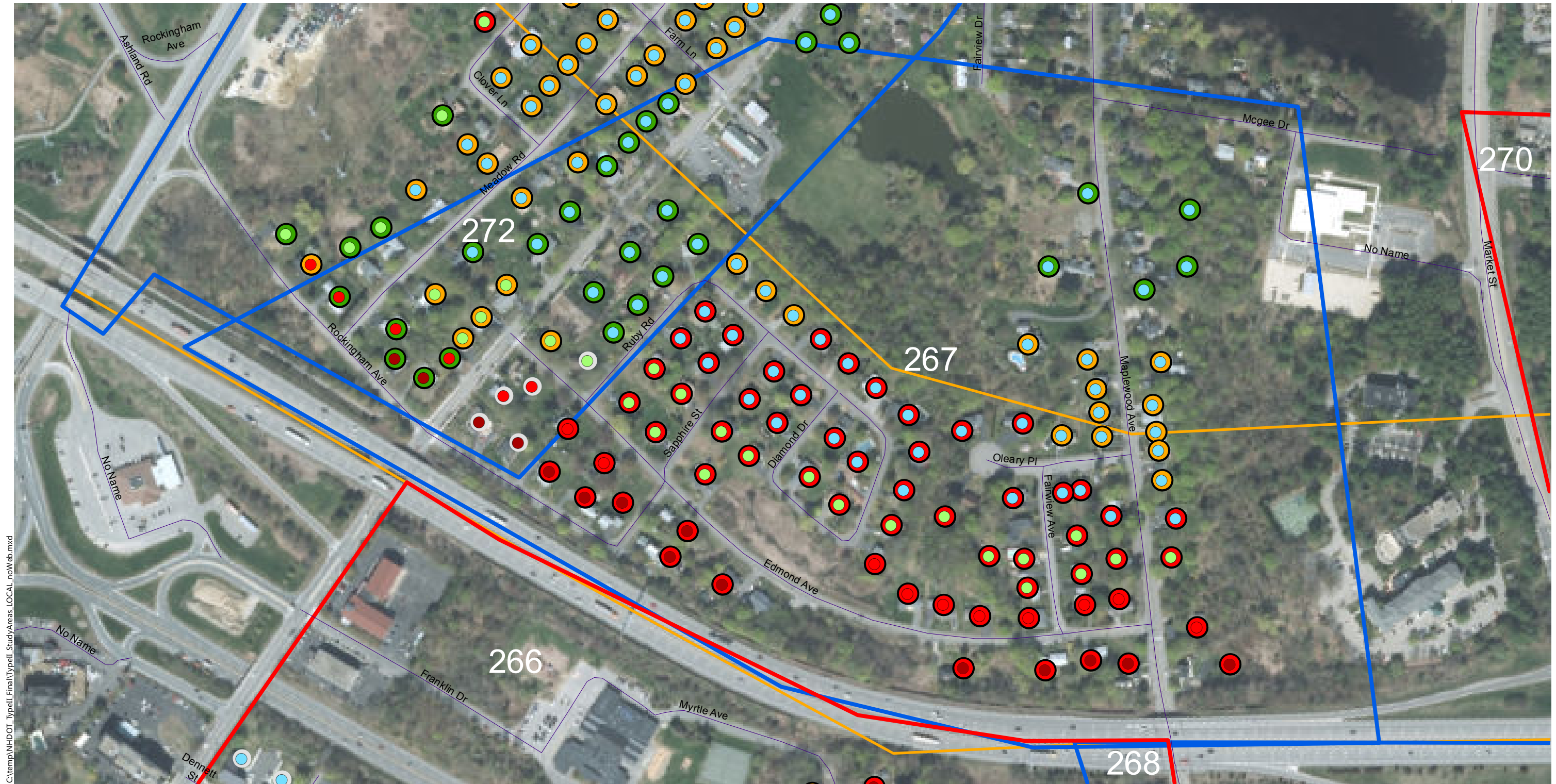
**Insertion Loss (25-ft Barrier)**

- Less than 5 dB
- 5 to 6 dB (Benefit)
- 7 to 9 dB (Benefit/Feasible)
- 10+ dB (Benefit/Design Goal)

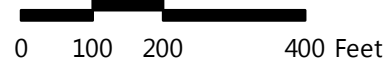
**Type II Noise Program Development**

**Type II Study Areas**

**Barrier Area: 266**  
**Roadway: I-95**  
**Mile Posts Start/End: 14.8 to 15.2**  
**Barrier Side NB Cost: \$ 0**  
**DEI: 3767 DEI Criteria: 1800**  
**Portsmouth, New Hampshire**  
**Ineligible (DEI)**



C:\temp\NH\DOT\_Typell\_Final\Typell\_StudyAreas\_LOCAL\_noWeb.mxd



**Study Areas**

- Ineligible for Type II
- Eligible for Type II
- Existing Barrier
- Prior Noise Barrier Study Area
- Existing Noise Barrier in Study Area

**Loudest-hour Noise Level**

- <61 dBA Leq
- 61 to 65 dBA Leq
- 66 to 70 dBA Leq (Impact)
- >70 dBA Leq (Impact)

**Insertion Loss (25-ft Barrier)**

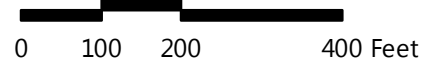
- Less than 5 dB
- 5 to 6 dB (Benefit)
- 7 to 9 dB (Benefit/Feasible)
- 10+ dB (Benefit/Design Goal)

**Type II Noise Program Development | Type II Study Areas**

**Barrier Area: 267**  
**Roadway: I-95**  
**Mile Posts Start/End: 0.9 to 1.6**  
**Barrier Side SB Cost: \$ 2610000**  
**DEI: 1048 DEI Criteria: 1600**  
**Portsmouth, New Hampshire**  
**Eligible**



C:\temp\NH\DOT\_Typell\_Final\Typell\_StudyAreas\_LOCAL\_noWeb.mxd



**Study Areas**

- Ineligible for Type II
- Eligible for Type II
- Existing Barrier
- Prior Noise Barrier Study Area
- Existing Noise Barrier in Study Area

**Loudest-hour Noise Level**

- <61 dBA Leq
- 61 to 65 dBA Leq
- 66 to 70 dBA Leq (Impact)
- >70 dBA Leq (Impact)

**Insertion Loss (25-ft Barrier)**

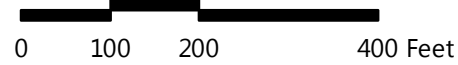
- Less than 5 dB
- 5 to 6 dB (Benefit)
- 7 to 9 dB (Benefit/Feasible)
- 10+ dB (Benefit/Design Goal)

**Type II Noise Program Development | Type II Study Areas**

**Barrier Area: 268**  
**Roadway: I-95**  
**Mile Posts Start/End: 15.1 to 15.4**  
**Barrier Side NB Cost: \$ 1222500**  
**DEI: 1315 DEI Criteria: 1800**  
**Portsmouth, New Hampshire**  
**Eligible**



C:\temp\NH\DOT\_Typell\_Final\Typell\_StudyAreas\_LOCAL\_noWeb.mxd



**Study Areas**

- Ineligible for Type II
- Eligible for Type II
- Existing Barrier
- Prior Noise Barrier Study Area
- Existing Noise Barrier in Study Area

**Loudest-hour Noise Level**

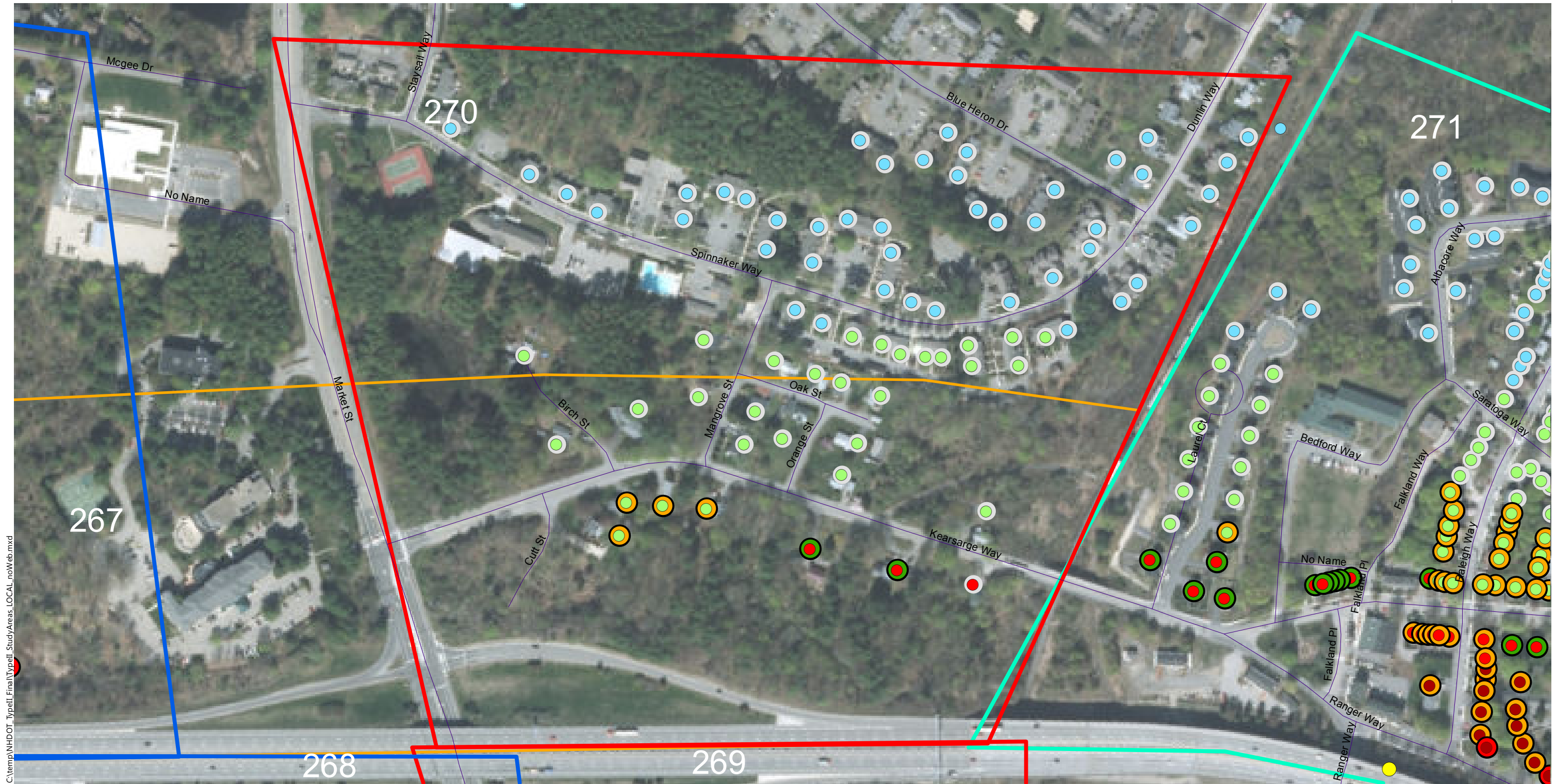
- <61 dBA Leq
- 61 to 65 dBA Leq
- 66 to 70 dBA Leq (Impact)
- >70 dBA Leq (Impact)

**Insertion Loss (25-ft Barrier)**

- Less than 5 dB
- 5 to 6 dB (Benefit)
- 7 to 9 dB (Benefit/Feasible)
- 10+ dB (Benefit/Design Goal)

**Type II Noise Program Development | Type II Study Areas**

**Barrier Area: 269**  
**Roadway: I-95**  
**Mile Posts Start/End: 15.4 to 15.7**  
**Barrier Side NB Cost: \$ 0**  
**DEI: 2433 DEI Criteria: 1800**  
**Portsmouth, New Hampshire**  
**Ineligible (DEI)**



C:\temp\NH\DOT\_TypeII\_Final\TypeII\_StudyAreas\_LOCAL\_noWeb.mxd

0 100 200 400 Feet



**Study Areas**

- Ineligible for Type II
- Eligible for Type II
- Existing Barrier
- Prior Noise Barrier Study Area
- Existing Noise Barrier in Study Area

**Loudest-hour Noise Level**

- <61 dBA Leq
- 61 to 65 dBA Leq
- 66 to 70 dBA Leq (Impact)
- >70 dBA Leq (Impact)

**Insertion Loss (25-ft Barrier)**

- Less than 5 dB
- 5 to 6 dB (Benefit)
- 7 to 9 dB (Benefit/Feasible)
- 10+ dB (Benefit/Design Goal)

**Type II Noise Program Development | Type II Study Areas**

**Barrier Area: 270**  
**Roadway: I-95**  
**Mile Posts Start/End: 0.5 to 0.8**  
**Barrier Side SB Cost: \$ 0**  
**DEI: 6700 DEI Criteria: 1600**  
**Portsmouth, New Hampshire**  
**Ineligible (DEI)**





C:\temp\NH\DOT\_TypeII\_Final\Typell\_StudyAreas\_LOCAL\_noWeb.mxd

0 100 200 400 Feet

**Study Areas**

- Ineligible for Type II
- Eligible for Type II
- Existing Barrier
- Prior Noise Barrier Study Area
- Existing Noise Barrier in Study Area

**Loudest-hour Noise Level**

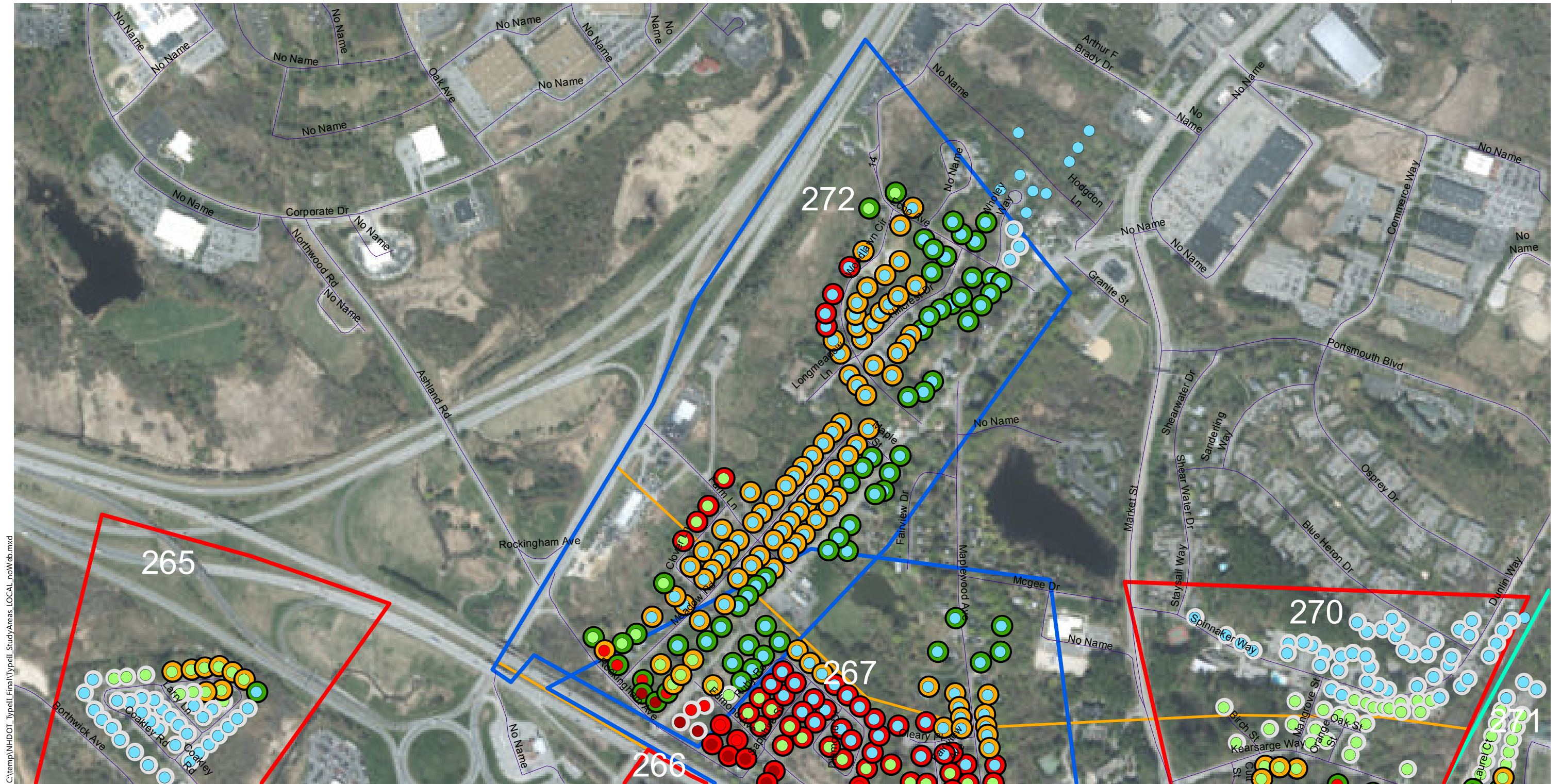
- <61 dBA Leq
- 61 to 65 dBA Leq
- 66 to 70 dBA Leq (Impact)
- >70 dBA Leq (Impact)

**Insertion Loss (25-ft Barrier)**

- Less than 5 dB
- 5 to 6 dB (Benefit)
- 7 to 9 dB (Benefit/Feasible)
- 10+ dB (Benefit/Design Goal)

**Type II Noise Program Development | Type II Study Areas**

**Barrier Area: 271**  
**Roadway: I-95**  
**Mile Posts Start/End: 0.2 to 0.5**  
**Barrier Side SB Cost: \$ 0**  
**DEI: 789      DEI Criteria: 1800**  
**Portsmouth, New Hampshire**  
**Existing Barrier**



C:\temp\NH\DOT\_Typell\_Final\Typell\_StudyAreas\_LOCAL\_noWeb.mxd

0 100 200 400 Feet

**Study Areas**

- Ineligible for Type II
- Eligible for Type II
- Existing Barrier
- Prior Noise Barrier Study Area
- Existing Noise Barrier in Study Area

**Loudest-hour Noise Level**

- <61 dBA Leq
- 61 to 65 dBA Leq
- 66 to 70 dBA Leq (Impact)
- >70 dBA Leq (Impact)

**Insertion Loss (25-ft Barrier)**

- Less than 5 dB
- 5 to 6 dB (Benefit)
- 7 to 9 dB (Benefit/Feasible)
- 10+ dB (Benefit/Design Goal)

**Type II Noise Program Development | Type II Study Areas**

**Barrier Area: 272**  
**Roadway: Spaulding**  
**Mile Posts Start/End: 0.1 to 0.9**  
**Barrier Side NB Cost: \$ 3517500**  
**DEI: 787      DEI Criteria: 1600**  
**Portsmouth, New Hampshire**  
**Eligible**