

C:\temp\NH\DOT\_Typell\_Final\Typell\_StudyAreas\_LOCAL\_noWeb.mxd

0 100 200 400 Feet

**Study Areas**

- Ineligible for Type II
- Eligible for Type II
- Existing Barrier
- Prior Noise Barrier Study Area
- Existing Noise Barrier in Study Area

**Loudest-hour Noise Level**

- <61 dBA Leq
- 61 to 65 dBA Leq
- 66 to 70 dBA Leq (Impact)
- >70 dBA Leq (Impact)

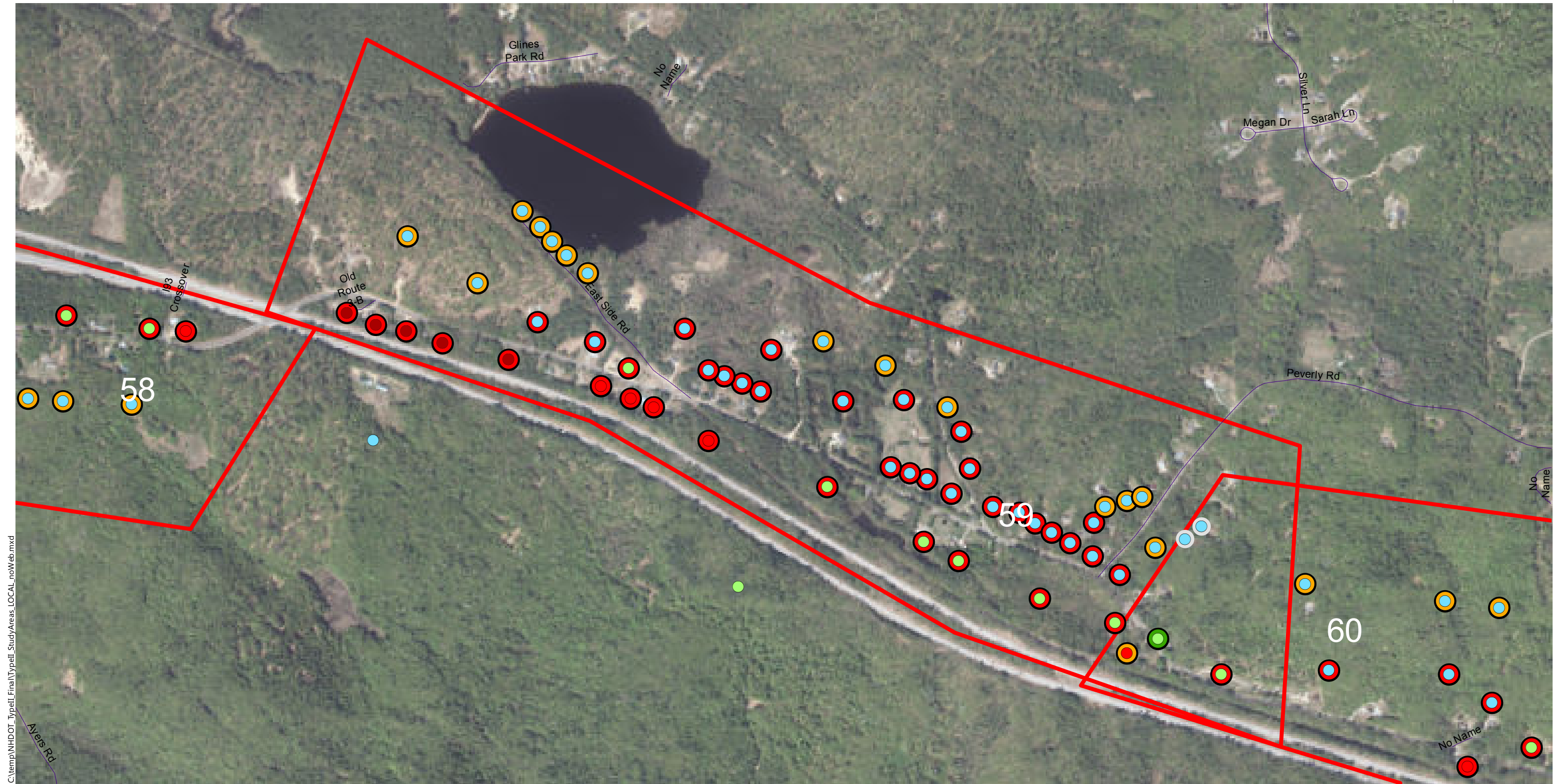
**Insertion Loss (25-ft Barrier)**

- Less than 5 dB
- 5 to 6 dB (Benefit)
- 7 to 9 dB (Benefit/Feasible)
- 10+ dB (Benefit/Design Goal)

**Type II Noise Program Development**

Type II Study Areas

**Barrier Area: 58**  
**Roadway: I-93**  
**Mile Posts Start/End: 50.7 to 51.6**  
**Barrier Side NB Cost: \$ 0**  
**DEI: 3855 DEI Criteria: 1600**  
**Northfield, New Hampshire**  
**Ineligible (DEI)**



C:\temp\NH\DOT\_Typell\_Final\Typell\_StudyAreas\_LOCAL\_noWeb.mxd

010200 400 Feet



**Study Areas**

- Ineligible for Type II
- Eligible for Type II
- Existing Barrier
- Prior Noise Barrier Study Area
- Existing Noise Barrier in Study Area

**Loudest-hour Noise Level**

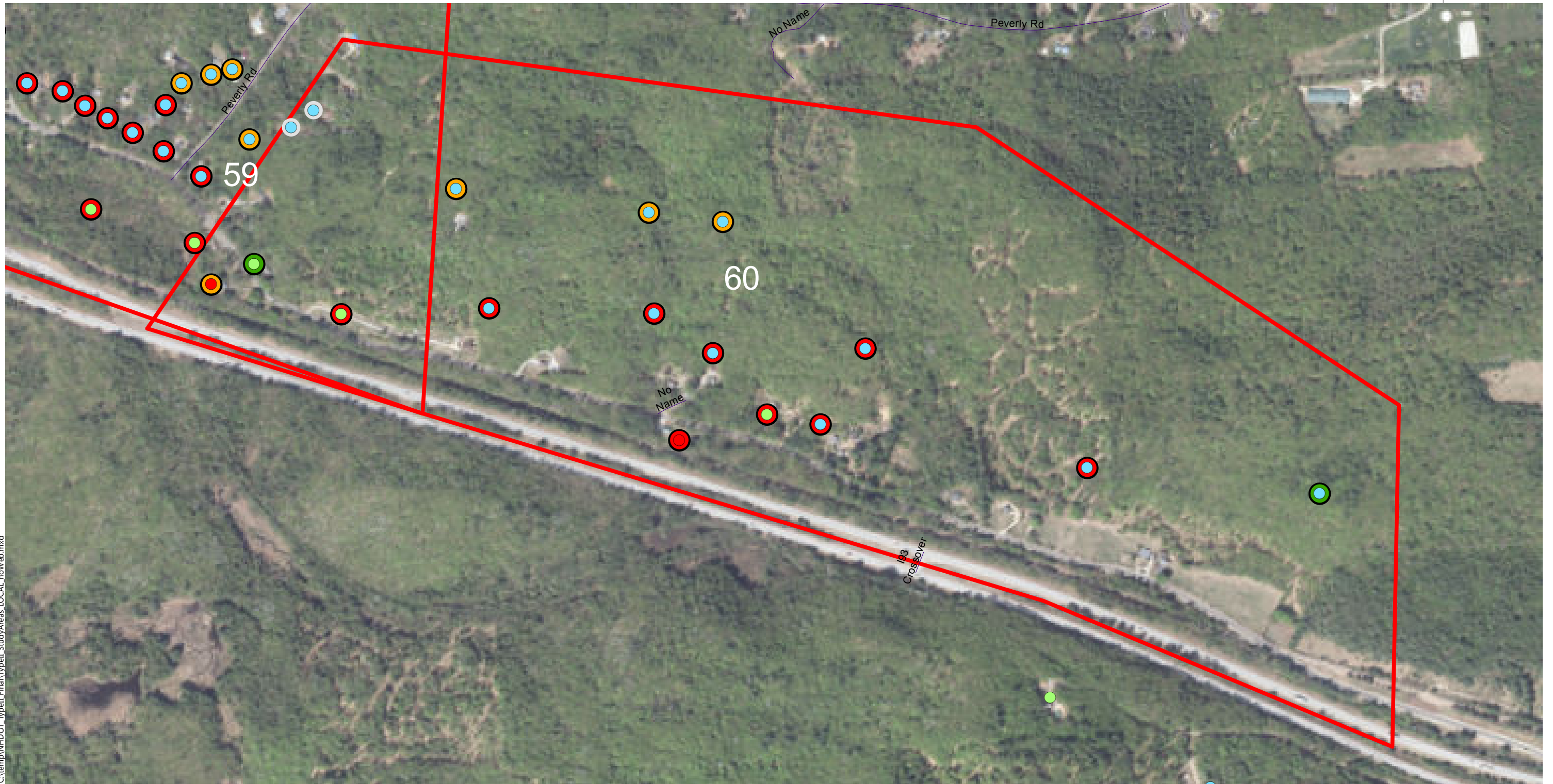
- <61 dBA Leq
- 61 to 65 dBA Leq
- 66 to 70 dBA Leq (Impact)
- >70 dBA Leq (Impact)

**Insertion Loss (25-ft Barrier)**

- Less than 5 dB
- 5 to 6 dB (Benefit)
- 7 to 9 dB (Benefit/Feasible)
- 10+ dB (Benefit/Design Goal)

**Type II Noise Program Development | Type II Study Areas**

**Barrier Area: 59**  
**Roadway: I-93**  
**Mile Posts Start/End: 78.8 to 80.4**  
**Barrier Side SB Cost: \$ 0**  
**DEI: 1666 DEI Criteria: 1600**  
**Northfield, New Hampshire**  
**Ineligible (DEI)**



C:\temp\NHDOT\_Typell\_Final\Typell\_StudyAreas\_LOCAL\_noWeb.mxd

0 100 200 400 Feet

**Study Areas**

- Ineligible for Type II
- Eligible for Type II
- Existing Barrier
- Prior Noise Barrier Study Area
- Existing Noise Barrier in Study Area

**Loudest-hour Noise Level**

- <61 dBA Leq
- 61 to 65 dBA Leq
- 66 to 70 dBA Leq (Impact)
- >70 dBA Leq (Impact)

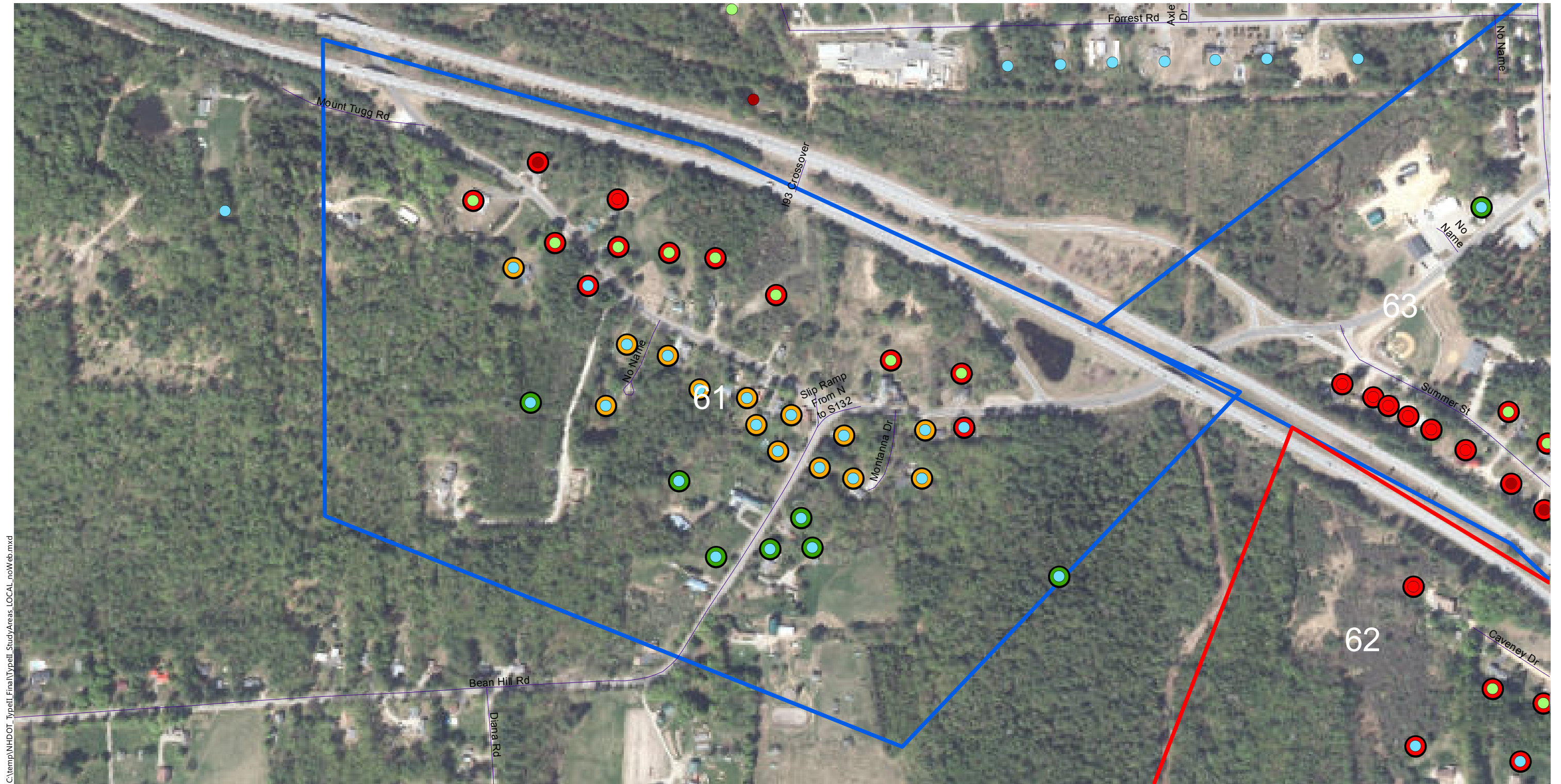
**Insertion Loss (25-ft Barrier)**

- Less than 5 dB
- 5 to 6 dB (Benefit)
- 7 to 9 dB (Benefit/Feasible)
- 10+ dB (Benefit/Design Goal)

**Type II Noise Program Development**

Type II Study Areas

**Barrier Area: 60**  
**Roadway: I-93**  
**Mile Posts Start/End: 77.7 to 79.1**  
**Barrier Side SB Cost: \$ 0**  
**DEI: 4475 DEI Criteria: 1600**  
**Northfield, New Hampshire**  
**Ineligible (DEI)**



C:\temp\NH\DOT\_Typell\_Final\Typell\_StudyAreas\_LOCAL\_noWeb.mxd

0 100 200 400 Feet

**Study Areas**

- Ineligible for Type II
- Eligible for Type II
- Existing Barrier
- Prior Noise Barrier Study Area
- Existing Noise Barrier in Study Area

**Loudest-hour Noise Level**

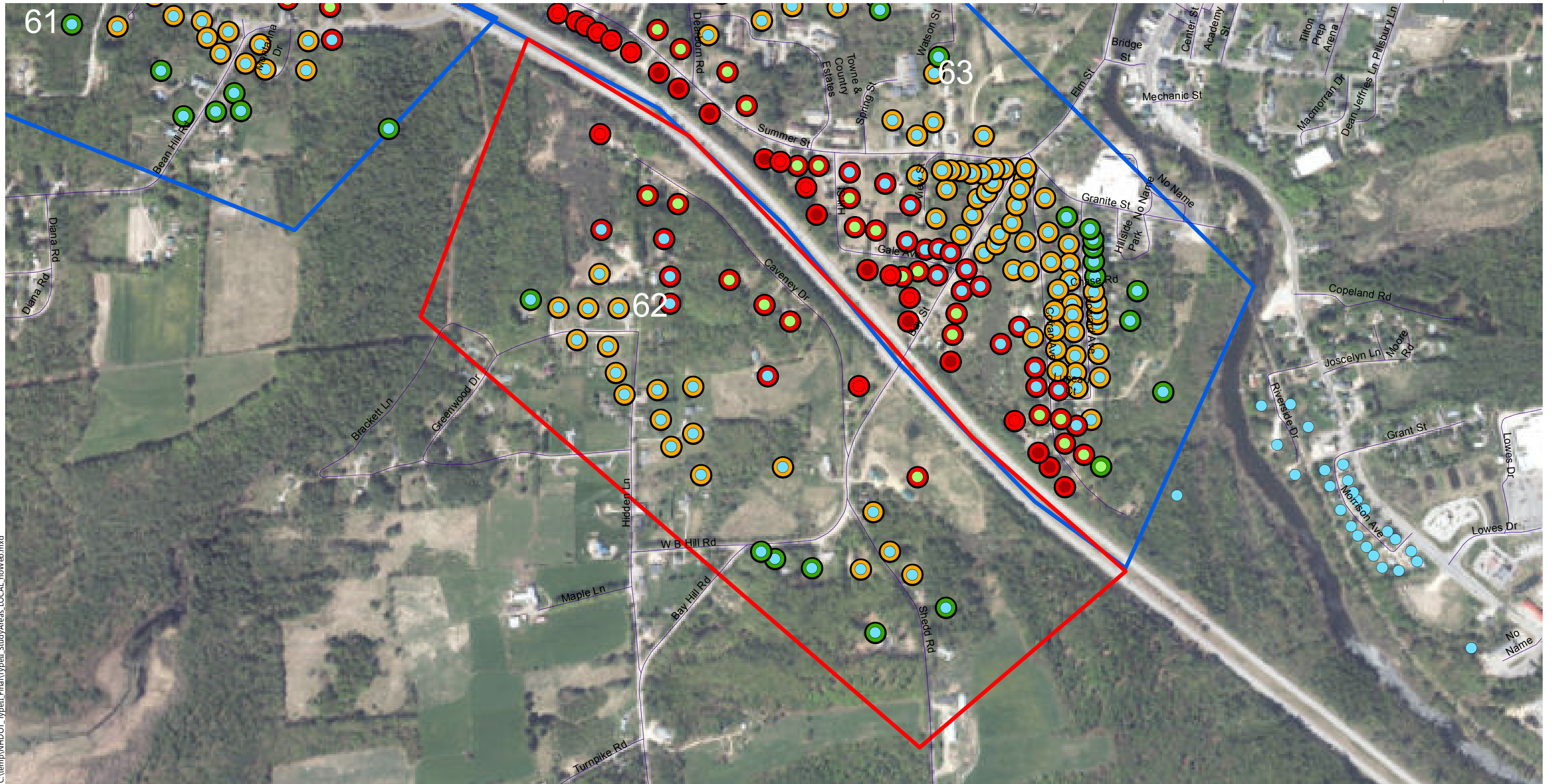
- <61 dBA Leq
- 61 to 65 dBA Leq
- 66 to 70 dBA Leq (Impact)
- >70 dBA Leq (Impact)

**Insertion Loss (25-ft Barrier)**

- Less than 5 dB
- 5 to 6 dB (Benefit)
- 7 to 9 dB (Benefit/Feasible)
- 10+ dB (Benefit/Design Goal)

**Type II Noise Program Development | Type II Study Areas**

**Barrier Area: 61**  
**Roadway: I-93**  
**Mile Posts Start/End: 54.3 to 55**  
**Barrier Side NB Cost: \$ 1008000**  
**DEI: 1344 DEI Criteria: 1600**  
**Northfield, New Hampshire**  
**Eligible**



C:\temp\NH\DOT\_Typell\_Final\Typell\_StudyAreas\_LOCAL\_noWeb.mxd

0 100 200 400 Feet

**Study Areas**

- Ineligible for Type II
- Eligible for Type II
- Existing Barrier
- Prior Noise Barrier Study Area
- Existing Noise Barrier in Study Area

**Loudest-hour Noise Level**

- <61 dBA Leq
- 61 to 65 dBA Leq
- 66 to 70 dBA Leq (Impact)
- >70 dBA Leq (Impact)

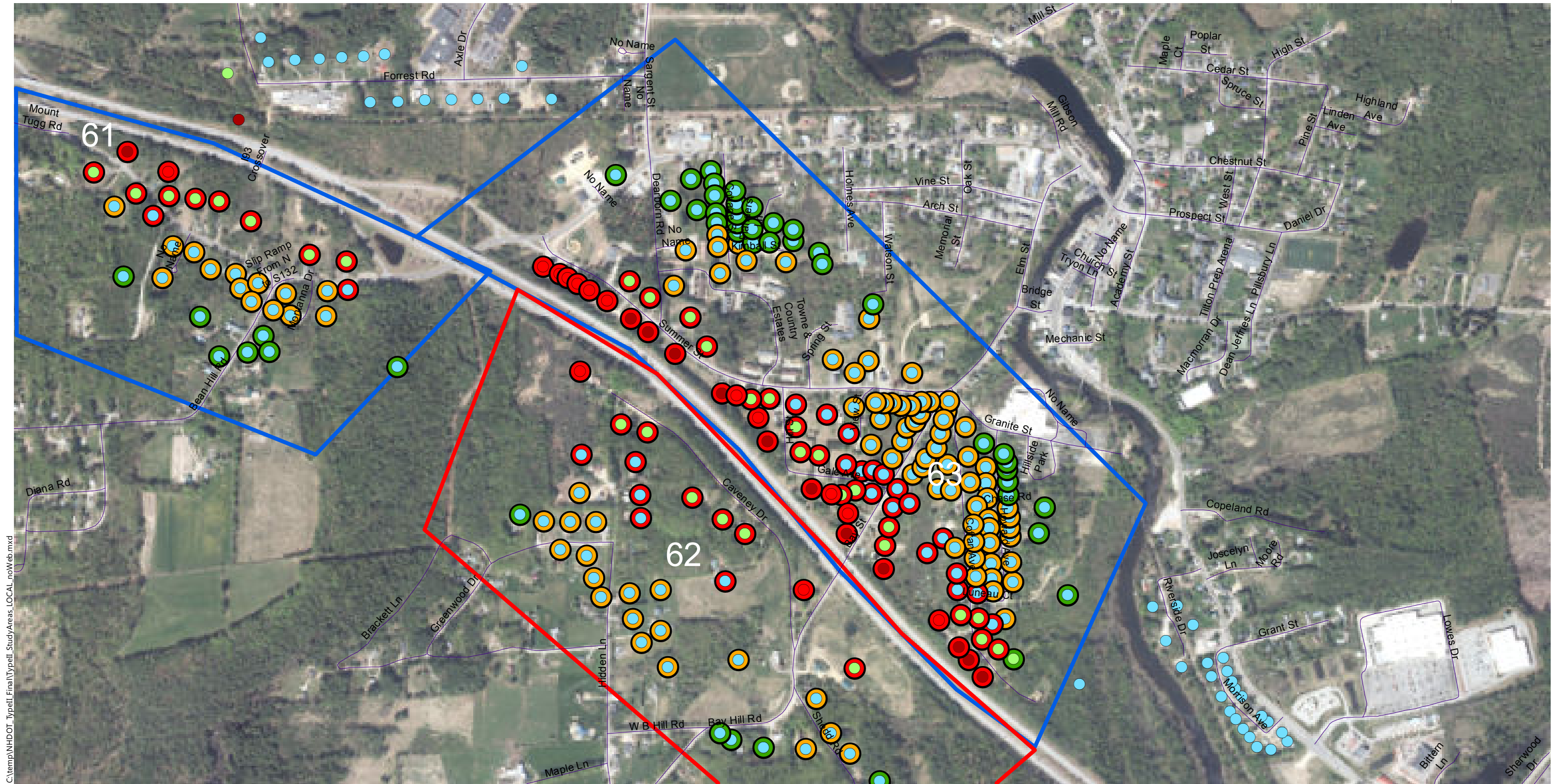
**Insertion Loss (25-ft Barrier)**

- Less than 5 dB
- 5 to 6 dB (Benefit)
- 7 to 9 dB (Benefit/Feasible)
- 10+ dB (Benefit/Design Goal)

**Type II Noise Program Development**

**Type II Study Areas**

**Barrier Area: 62**  
**Roadway: I-93**  
**Mile Posts Start/End: 55.1 to 56.1**  
**Barrier Side NB Cost: \$ 0**  
**DEI: 1689 DEI Criteria: 1600**  
**Northfield, New Hampshire**  
**Ineligible (DEI)**



C:\temp\NH\DOT\_TypeII\_Final\Typell\_StudyAreas\_LOCAL\_noWeb.mxd

0 100 200 400 Feet

**Study Areas**

- Ineligible for Type II
- Eligible for Type II
- Existing Barrier
- Prior Noise Barrier Study Area
- Existing Noise Barrier in Study Area

**Loudest-hour Noise Level**

- <61 dBA Leq
- 61 to 65 dBA Leq
- 66 to 70 dBA Leq (Impact)
- >70 dBA Leq (Impact)

**Insertion Loss (25-ft Barrier)**

- Less than 5 dB
- 5 to 6 dB (Benefit)
- 7 to 9 dB (Benefit/Feasible)
- 10+ dB (Benefit/Design Goal)

**Type II Noise Program Development | Type II Study Areas**

**Barrier Area: 63**  
**Roadway: I-93**  
**Mile Posts Start/End: 75.8 to 76.9**  
**Barrier Side SB Cost: \$ 4507500**  
**DEI: 722      DEI Criteria: 1600**  
**Northfield, New Hampshire**  
**Eligible**