

C:\temp\NH\DOT_TypeII_Final\TypeII_StudyAreas_LOCAL_noWeb.mxd

0 100 200 400 Feet

Study Areas

- Ineligible for Type II
- Eligible for Type II
- Existing Barrier
- Prior Noise Barrier Study Area
- Existing Noise Barrier in Study Area

Loudest-hour Noise Level

- <61 dBA Leq
- 61 to 65 dBA Leq
- 66 to 70 dBA Leq (Impact)
- >70 dBA Leq (Impact)

Insertion Loss (25-ft Barrier)

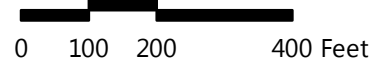
- Less than 5 dB
- 5 to 6 dB (Benefit)
- 7 to 9 dB (Benefit/Feasible)
- 10+ dB (Benefit/Design Goal)

Type II Noise Program Development | Type II Study Areas

Barrier Area: 145
Roadway: I-93
Mile Posts Start/End: 120.4 to 121.1
Barrier Side SB Cost: \$ 0
DEI: 1430 DEI Criteria: 1500
Londonderry, New Hampshire
Ineligible (Not Feasible/Reasonable in Prior Type I)



C:\temp\NH\DOT_Typell_Final\Typell_StudyAreas_LOCAL_noWeb.mxd



Study Areas

- Ineligible for Type II
- Eligible for Type II
- Existing Barrier
- Prior Noise Barrier Study Area
- Existing Noise Barrier in Study Area

Loudest-hour Noise Level

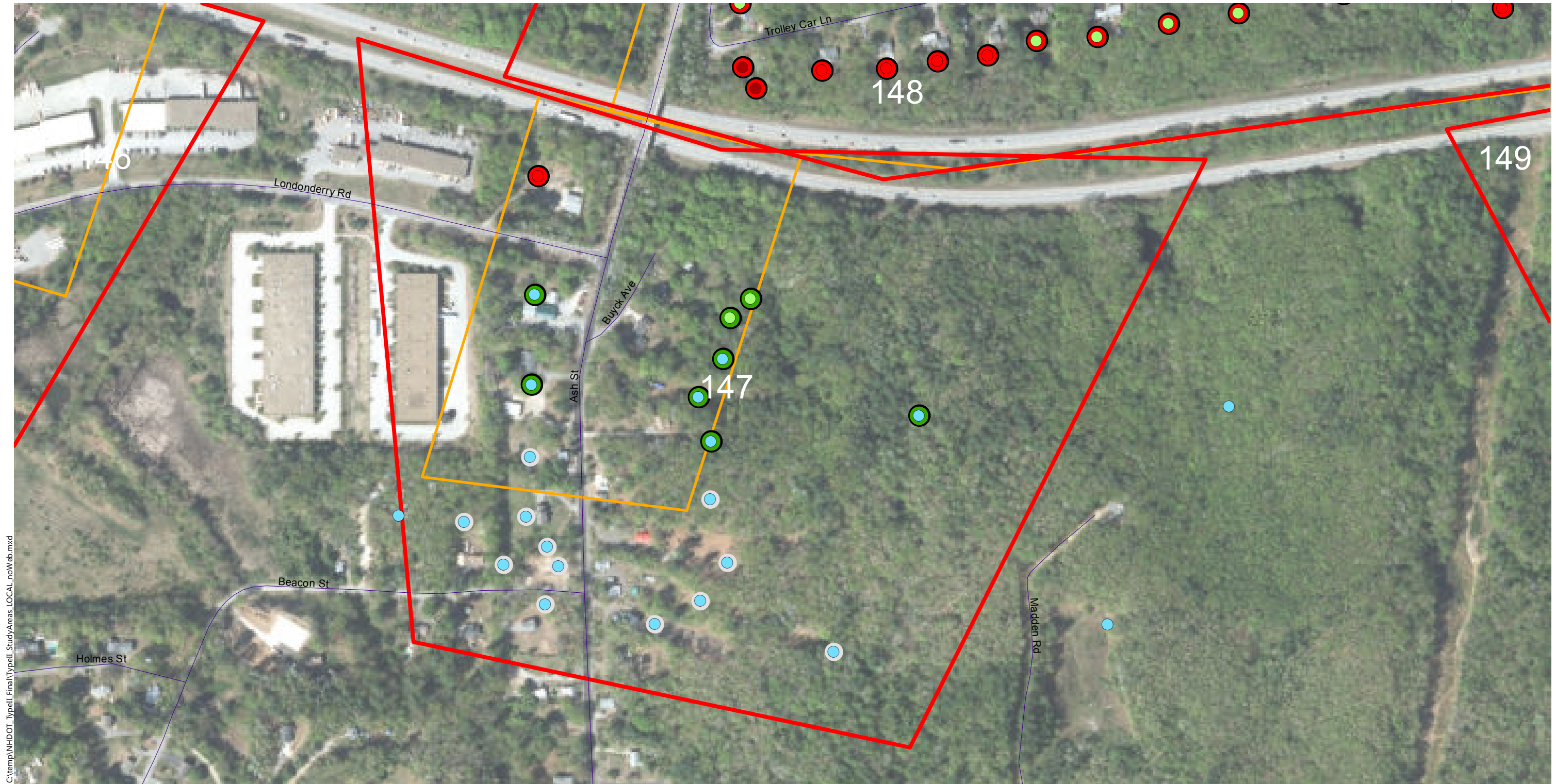
- <61 dBA Leq
- 61 to 65 dBA Leq
- 66 to 70 dBA Leq (Impact)
- >70 dBA Leq (Impact)

Insertion Loss (25-ft Barrier)

- Less than 5 dB
- 5 to 6 dB (Benefit)
- 7 to 9 dB (Benefit/Feasible)
- 10+ dB (Benefit/Design Goal)

Type II Noise Program Development | Type II Study Areas

Barrier Area: 146
Roadway: I-93
Mile Posts Start/End: 11.7 to 12.1
Barrier Side NB Cost: \$ 0
DEI: 7067 DEI Criteria: 1500
Londonderry, New Hampshire
Ineligible (Not Feasible/Reasonable in Prior Type I)



C:\temp\NH\DOT_Typell_Final\Typell_StudyAreas_LOCAL_noWeb.mxd

0 100 200 400 Feet

Study Areas

- Ineligible for Type II
- Eligible for Type II
- Existing Barrier
- Prior Noise Barrier Study Area
- Existing Noise Barrier in Study Area

Loudest-hour Noise Level

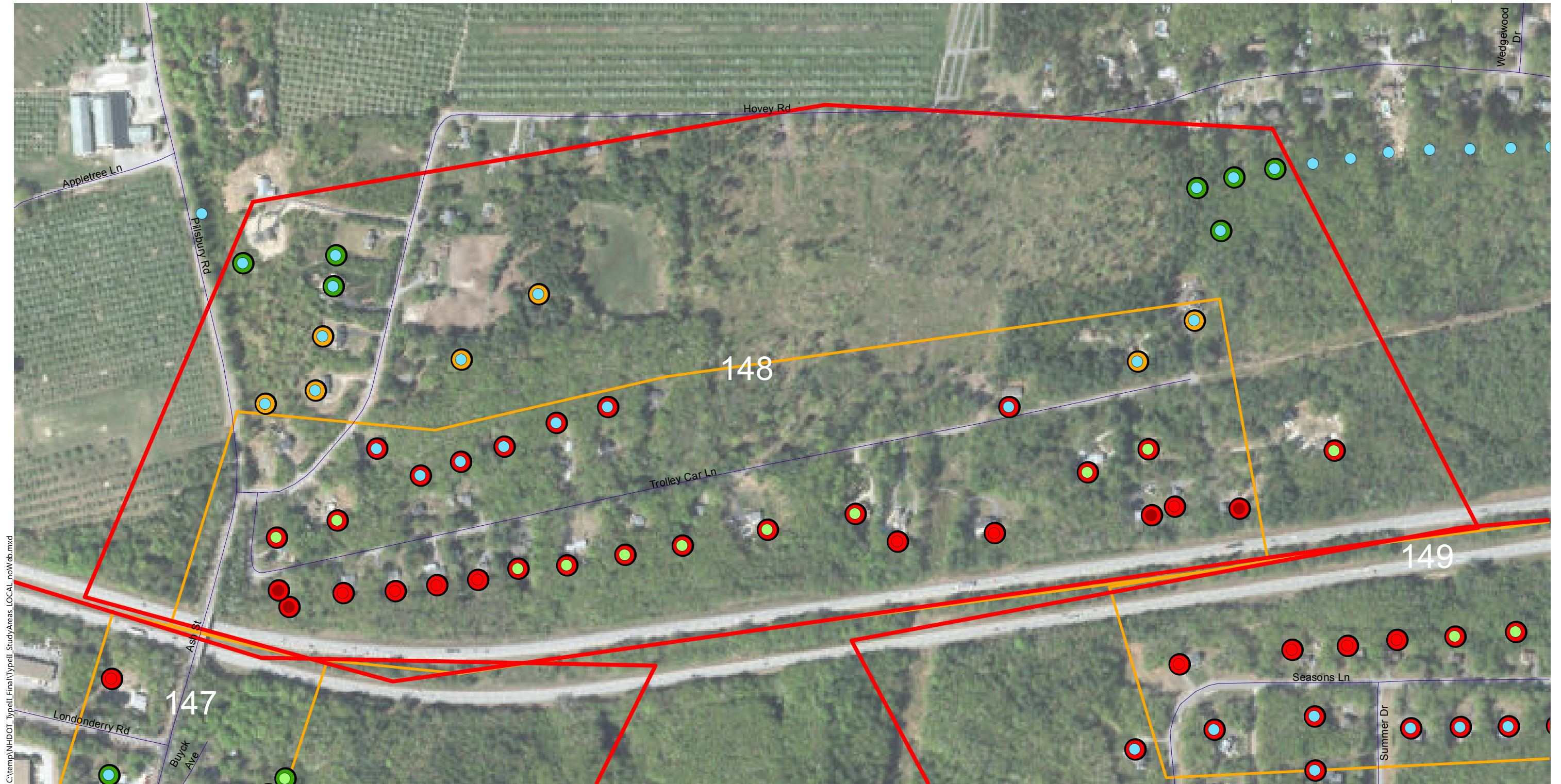
- <61 dBA Leq
- 61 to 65 dBA Leq
- 66 to 70 dBA Leq (Impact)
- >70 dBA Leq (Impact)

Insertion Loss (25-ft Barrier)

- Less than 5 dB
- 5 to 6 dB (Benefit)
- 7 to 9 dB (Benefit/Feasible)
- 10+ dB (Benefit/Design Goal)

Type II Noise Program Development | Type II Study Areas

Barrier Area: 147
Roadway: I-93
Mile Posts Start/End: 12.2 to 12.7
Barrier Side NB Cost: \$ 0
DEI: 7710 DEI Criteria: 1400
Londonderry, New Hampshire
Ineligible (Not Feasible/Reasonable in Prior Type I)



C:\temp\NH\DOT_TypeII_Final\TypeII_StudyAreas_LOCAL_noWeb.mxd

0 100 200 400 Feet

Study Areas

- Ineligible for Type II
- Eligible for Type II
- Existing Barrier
- Prior Noise Barrier Study Area
- Existing Noise Barrier in Study Area

Loudest-hour Noise Level

- <61 dBA Leq
- 61 to 65 dBA Leq
- 66 to 70 dBA Leq (Impact)
- >70 dBA Leq (Impact)

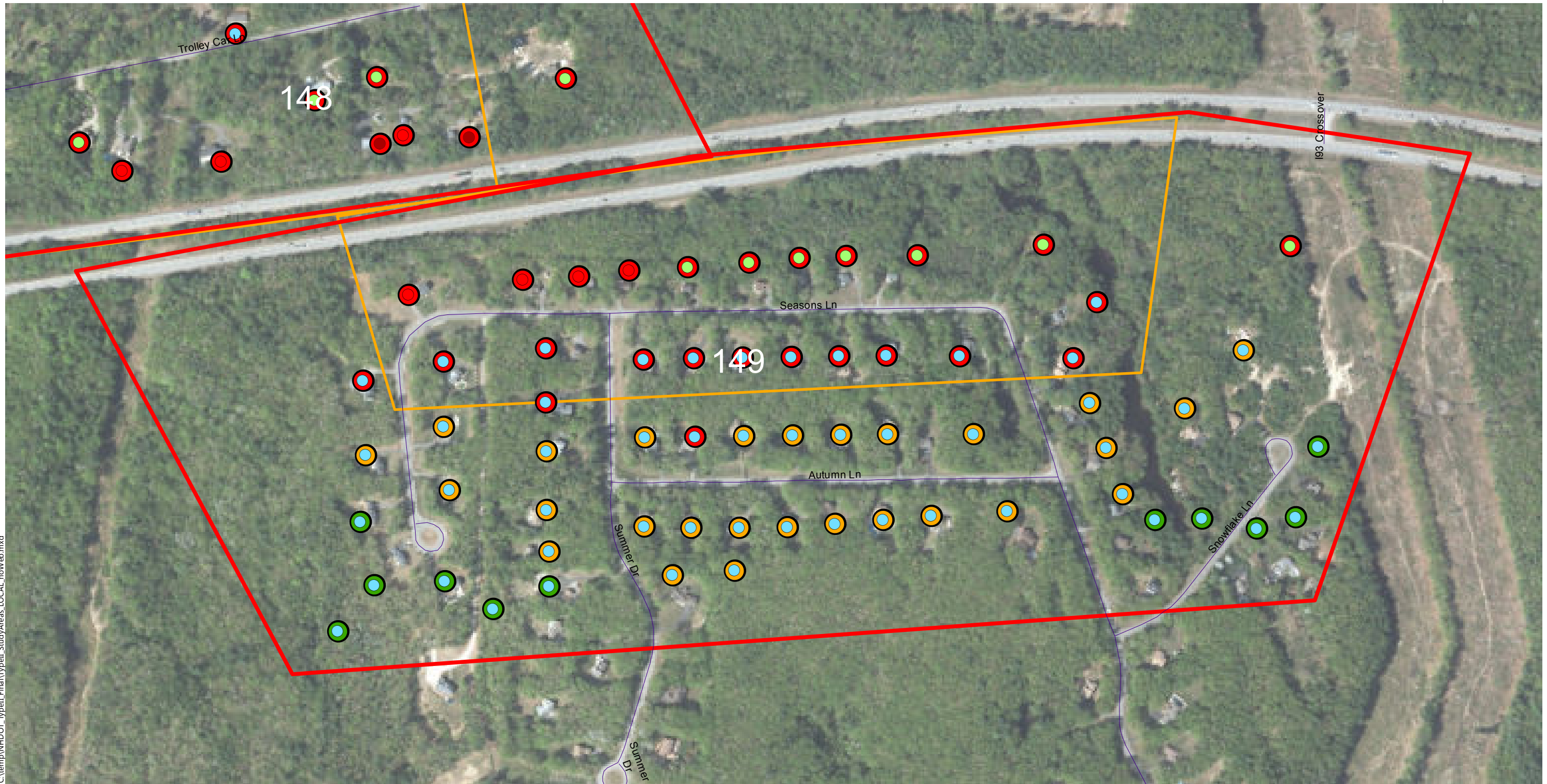
Insertion Loss (25-ft Barrier)

- Less than 5 dB
- 5 to 6 dB (Benefit)
- 7 to 9 dB (Benefit/Feasible)
- 10+ dB (Benefit/Design Goal)

Type II Noise Program Development

Type II Study Areas

Barrier Area: 148
Roadway: I-93
Mile Posts Start/End: 118.7 to 119.6
Barrier Side SB Cost: \$ 0
DEI: 1503 DEI Criteria: 1500
Londonderry, New Hampshire
Ineligible (Feasible/Reasonable in Prior Type I)



C:\temp\NH\DOT_Typell_Final\Typell_StudyAreas_LOCAL_noWeb.mxd

0 100 200 400 Feet

Study Areas

- Ineligible for Type II
- Eligible for Type II
- Existing Barrier
- Prior Noise Barrier Study Area
- Existing Noise Barrier in Study Area

Loudest-hour Noise Level

- <61 dBA Leq
- 61 to 65 dBA Leq
- 66 to 70 dBA Leq (Impact)
- >70 dBA Leq (Impact)

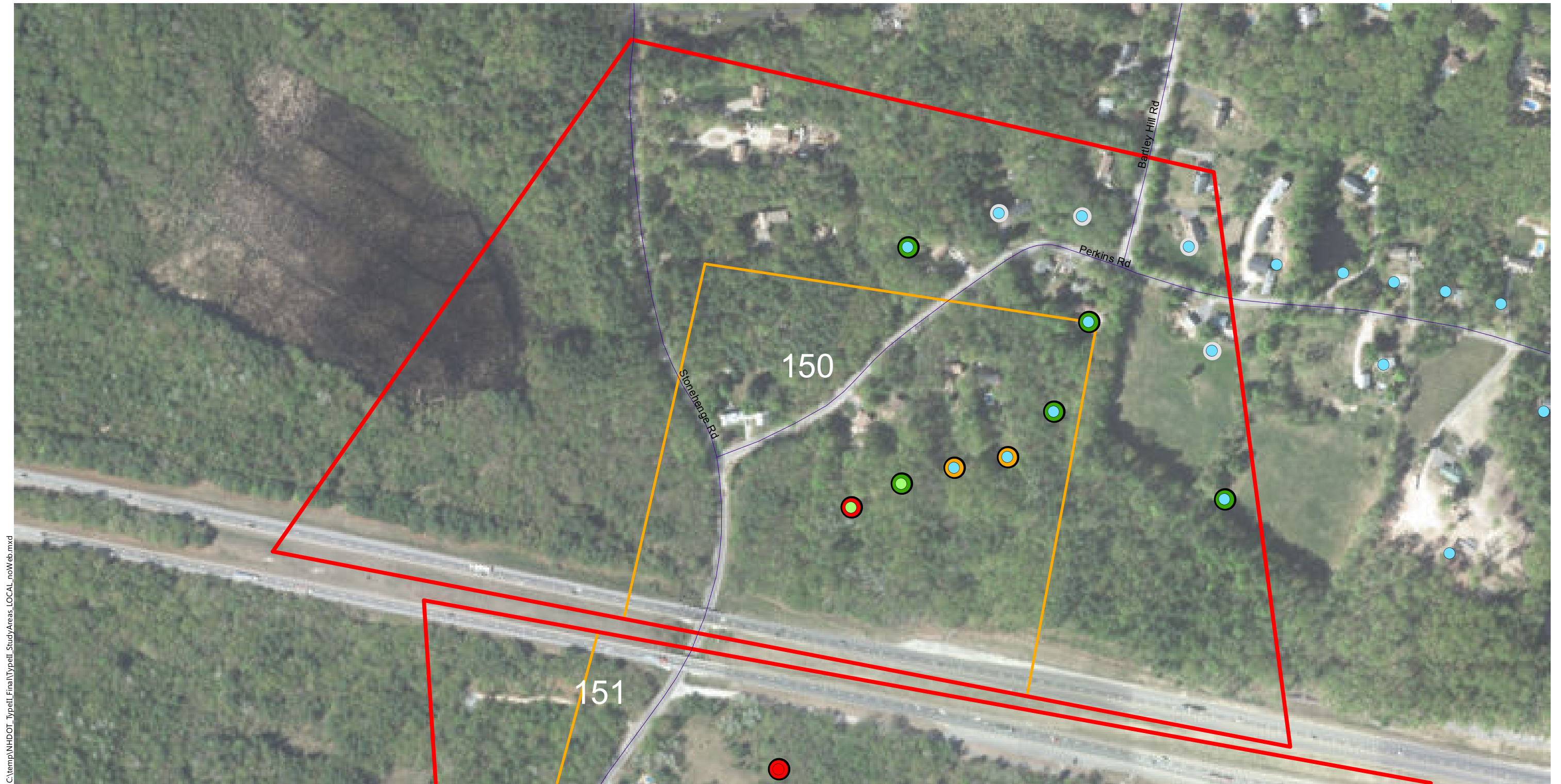
Insertion Loss (25-ft Barrier)

- Less than 5 dB
- 5 to 6 dB (Benefit)
- 7 to 9 dB (Benefit/Feasible)
- 10+ dB (Benefit/Design Goal)

Type II Noise Program Development

Type II Study Areas

Barrier Area: 149
Roadway: I-93
Mile Posts Start/End: 12.8 to 13.8
Barrier Side NB Cost: \$ 0
DEI: 1314 DEI Criteria: 1400
Londonderry, New Hampshire
Ineligible (Feasible/Reasonable in Prior Type I)



C:\temp\NH\DOT_Typell_Final\Typell_StudyAreas_LOCAL_noWeb.mxd

0 100 200 400 Feet

Study Areas

- Ineligible for Type II
- Eligible for Type II
- Existing Barrier
- Prior Noise Barrier Study Area
- Existing Noise Barrier in Study Area

Loudest-hour Noise Level

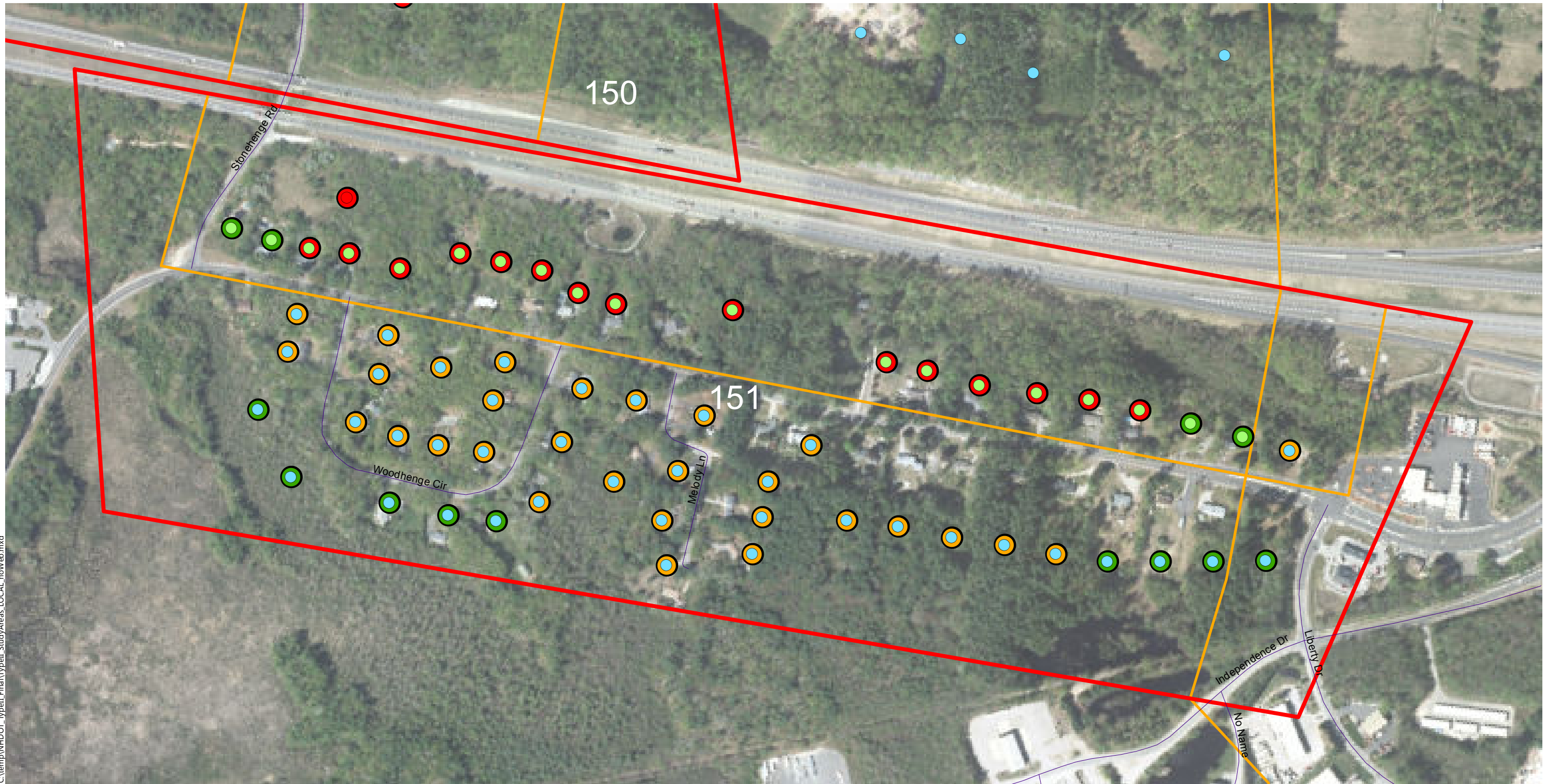
- <61 dBA Leq
- 61 to 65 dBA Leq
- 66 to 70 dBA Leq (Impact)
- >70 dBA Leq (Impact)

Insertion Loss (25-ft Barrier)

- Less than 5 dB
- 5 to 6 dB (Benefit)
- 7 to 9 dB (Benefit/Feasible)
- 10+ dB (Benefit/Design Goal)

Type II Noise Program Development | Type II Study Areas

Barrier Area: 150
Roadway: I-93
Mile Posts Start/End: 117.4 to 117.9
Barrier Side SB Cost: \$ 0
DEI: 8970 DEI Criteria: 1400
Londonderry, New Hampshire
Ineligible (Not Feasible/Reasonable in Prior Type I)



C:\temp\NH\DOT_Typell_Final\Typell_StudyAreas_LOCAL_noWeb.mxd

0 100 200 400 Feet

Study Areas

- Ineligible for Type II
- Eligible for Type II
- Existing Barrier
- Prior Noise Barrier Study Area
- Existing Noise Barrier in Study Area

Loudest-hour Noise Level

- <61 dBA Leq
- 61 to 65 dBA Leq
- 66 to 70 dBA Leq (Impact)
- >70 dBA Leq (Impact)

Insertion Loss (25-ft Barrier)

- Less than 5 dB
- 5 to 6 dB (Benefit)
- 7 to 9 dB (Benefit/Feasible)
- 10+ dB (Benefit/Design Goal)

Type II Noise Program Development | Type II Study Areas

Barrier Area: 151
Roadway: I-93
Mile Posts Start/End: 14.1 to 15.1
Barrier Side NB Cost: \$ 0
DEI: 1424 DEI Criteria: 1400
Londonderry, New Hampshire
Ineligible (Not Feasible/Reasonable in Prior Type I)