



C:\temp\NH\DOT\_Typell\_Final\Typell\_StudyAreas\_LOCAL\_noWeb.mxd

0 100 200 400 Feet



**Study Areas**

- Ineligible for Type II
- Eligible for Type II
- Existing Barrier
- Prior Noise Barrier Study Area
- Existing Noise Barrier in Study Area

**Loudest-hour Noise Level**

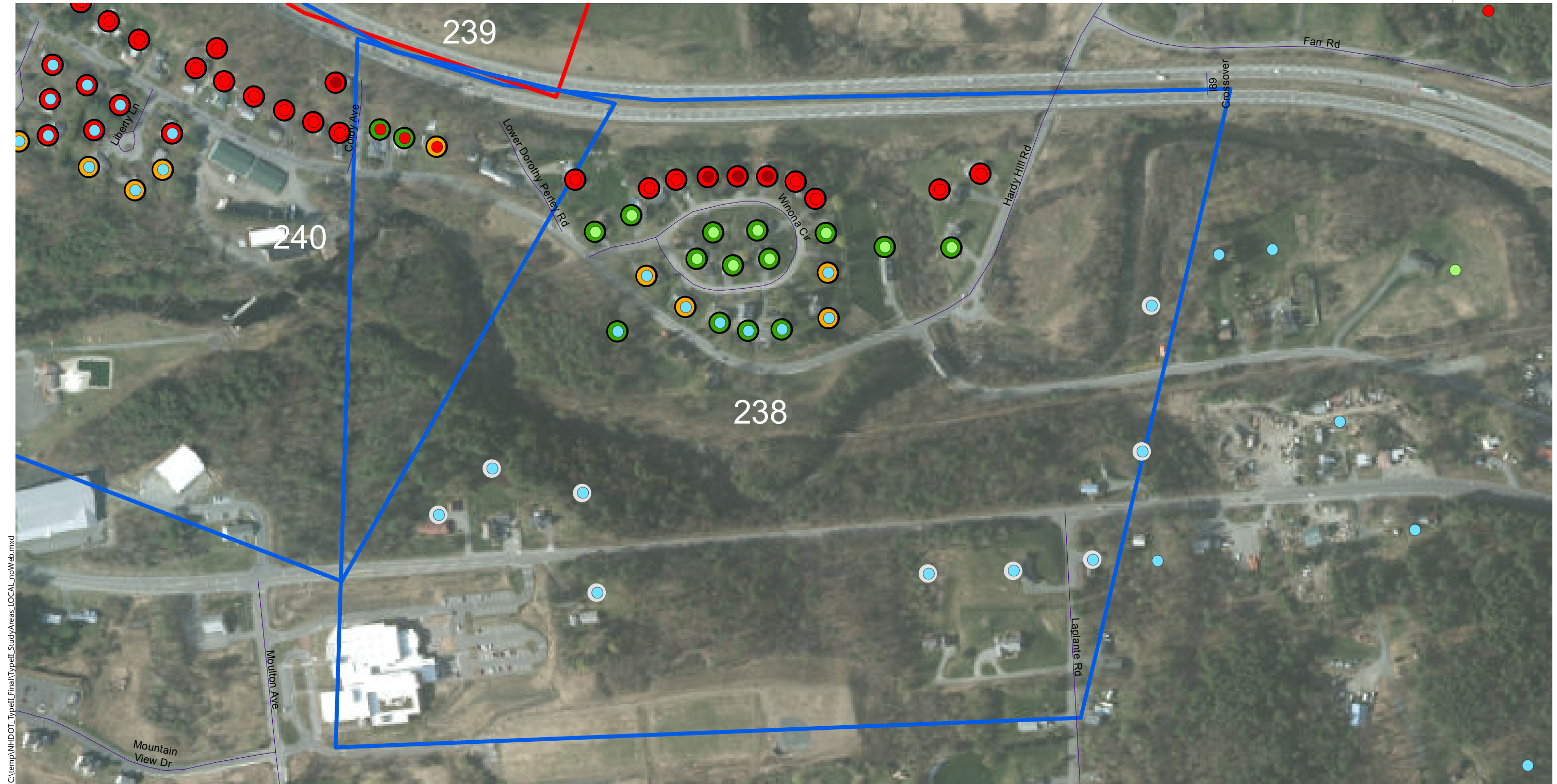
- <61 dBA Leq
- 61 to 65 dBA Leq
- 66 to 70 dBA Leq (Impact)
- >70 dBA Leq (Impact)

**Insertion Loss (25-ft Barrier)**

- Less than 5 dB
- 5 to 6 dB (Benefit)
- 7 to 9 dB (Benefit/Feasible)
- 10+ dB (Benefit/Design Goal)

**Type II Noise Program Development | Type II Study Areas**

**Barrier Area: 237**  
**Roadway: I-89**  
**Mile Posts Start/End: 53 to 54.1**  
**Barrier Side NB Cost: \$ 0**  
**DEI: 3194 DEI Criteria: 1700**  
**Lebanon, New Hampshire**  
**Ineligible (No Impact)**



C:\temp\NH\DOT\_Typell\_Final\Typell\_StudyAreas\_LOCAL\_noWeb.mxd

0 100 200 400 Feet

**Study Areas**

- Ineligible for Type II
- Eligible for Type II
- Existing Barrier
- Prior Noise Barrier Study Area
- Existing Noise Barrier in Study Area

**Loudest-hour Noise Level**

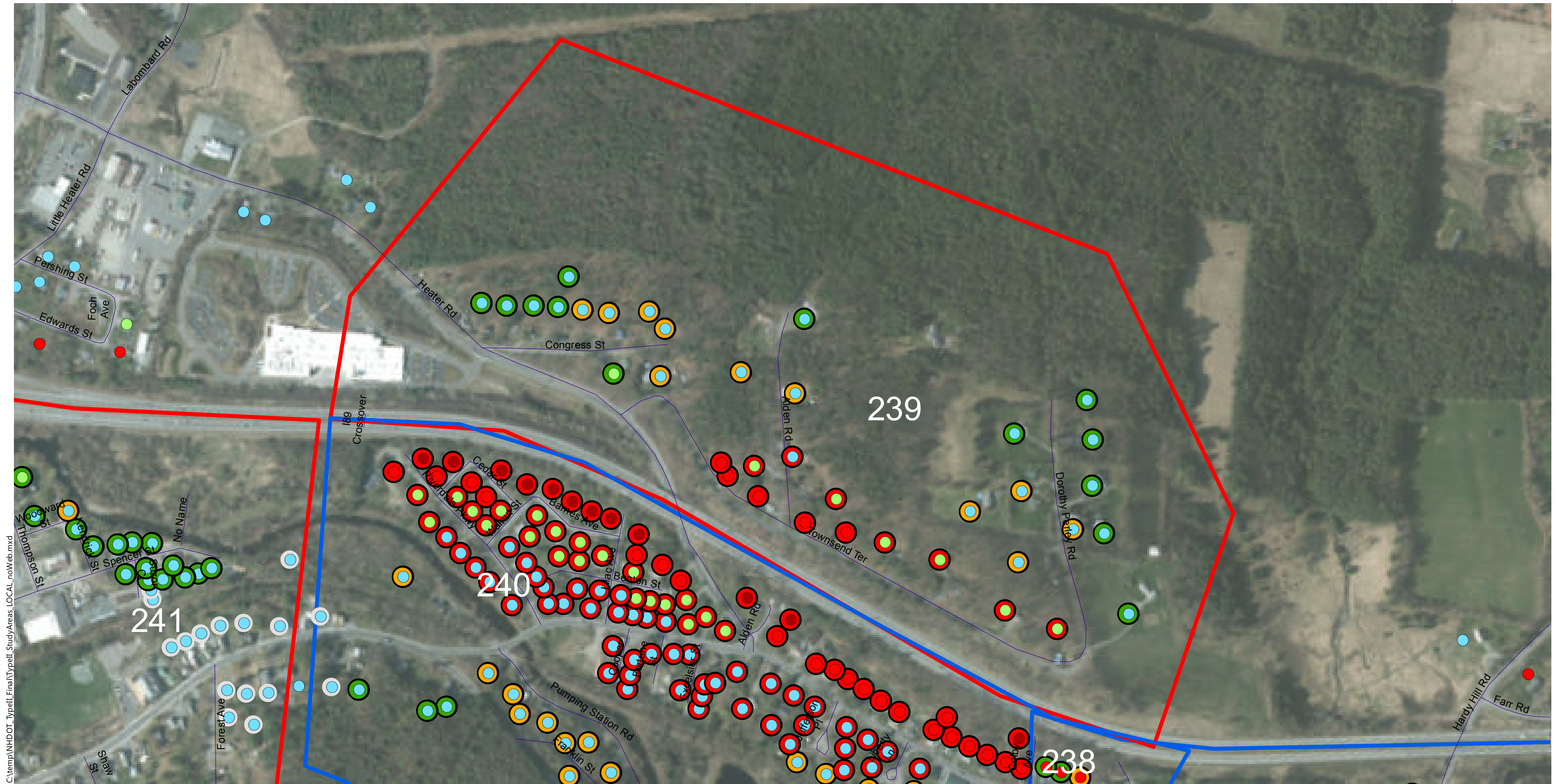
- <61 dBA Leq
- 61 to 65 dBA Leq
- 66 to 70 dBA Leq (Impact)
- >70 dBA Leq (Impact)

**Insertion Loss (25-ft Barrier)**

- Less than 5 dB
- 5 to 6 dB (Benefit)
- 7 to 9 dB (Benefit/Feasible)
- 10+ dB (Benefit/Design Goal)

**Type II Noise Program Development | Type II Study Areas**

**Barrier Area: 238**  
**Roadway: I-89**  
**Mile Posts Start/End: 5.7 to 6.2**  
**Barrier Side SB Cost: \$ 1165500**  
**DEI: 1177 DEI Criteria: 1500**  
**Lebanon, New Hampshire**  
**Eligible**



C:\temp\NH\DOT\_Typell\_Final\Typell\_StudyAreas\_LOCAL\_noWeb.mxd

0 100200 400 Feet

**Study Areas**

- Ineligible for Type II
- Eligible for Type II
- Existing Barrier
- Prior Noise Barrier Study Area
- Existing Noise Barrier in Study Area

**Loudest-hour Noise Level**

- <61 dBA Leq
- 61 to 65 dBA Leq
- 66 to 70 dBA Leq (Impact)
- >70 dBA Leq (Impact)

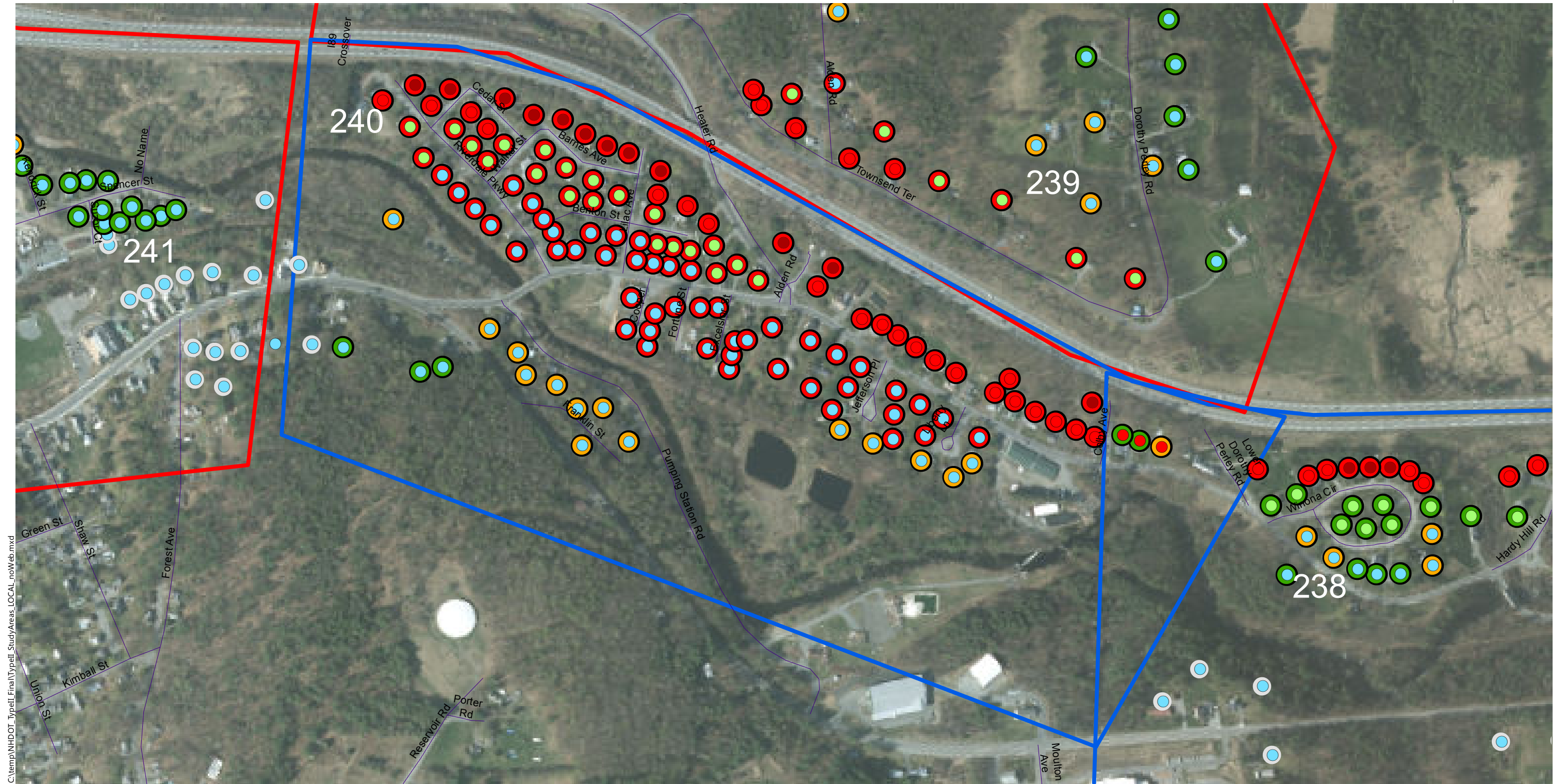
**Insertion Loss (25-ft Barrier)**

- Less than 5 dB
- 5 to 6 dB (Benefit)
- 7 to 9 dB (Benefit/Feasible)
- 10+ dB (Benefit/Design Goal)

**Type II Noise Program Development | Type II Study Areas**

**Barrier Area: 239**  
**Roadway: I-89**  
**Mile Posts Start/End: 55.1 to 55.9**  
**Barrier Side NB Cost: \$ 0**  
**DEI: 2034 DEI Criteria: 1500**  
**Lebanon, New Hampshire**  
**Ineligible (DEI)**





C:\temp\NH\DOT\_TypeII\_Final\TypeII\_StudyAreas\_LOCAL\_noWeb.mxd

0 100 200 400 Feet

**Study Areas**

- Ineligible for Type II
- Eligible for Type II
- Existing Barrier
- Prior Noise Barrier Study Area
- Existing Noise Barrier in Study Area

**Loudest-hour Noise Level**

- <61 dBA Leq
- 61 to 65 dBA Leq
- 66 to 70 dBA Leq (Impact)
- >70 dBA Leq (Impact)

**Insertion Loss (25-ft Barrier)**

- Less than 5 dB
- 5 to 6 dB (Benefit)
- 7 to 9 dB (Benefit/Feasible)
- 10+ dB (Benefit/Design Goal)

**Type II Noise Program Development | Type II Study Areas**

**Barrier Area: 240**  
**Roadway: I-89**  
**Mile Posts Start/End: 5 to 5.8**  
**Barrier Side SB Cost: \$ 3367500**  
**DEI: 891 DEI Criteria: 1500**  
**Lebanon, New Hampshire**  
**Eligible**



C:\temp\NH\DOT\_Typell\_Final\Typell\_StudyAreas\_LOCAL\_noWeb.mxd

0 100 200 400 Feet

**Study Areas**

- Ineligible for Type II
- Eligible for Type II
- Existing Barrier
- Prior Noise Barrier Study Area
- Existing Noise Barrier in Study Area

**Loudest-hour Noise Level**

- <61 dBA Leq
- 61 to 65 dBA Leq
- 66 to 70 dBA Leq (Impact)
- >70 dBA Leq (Impact)

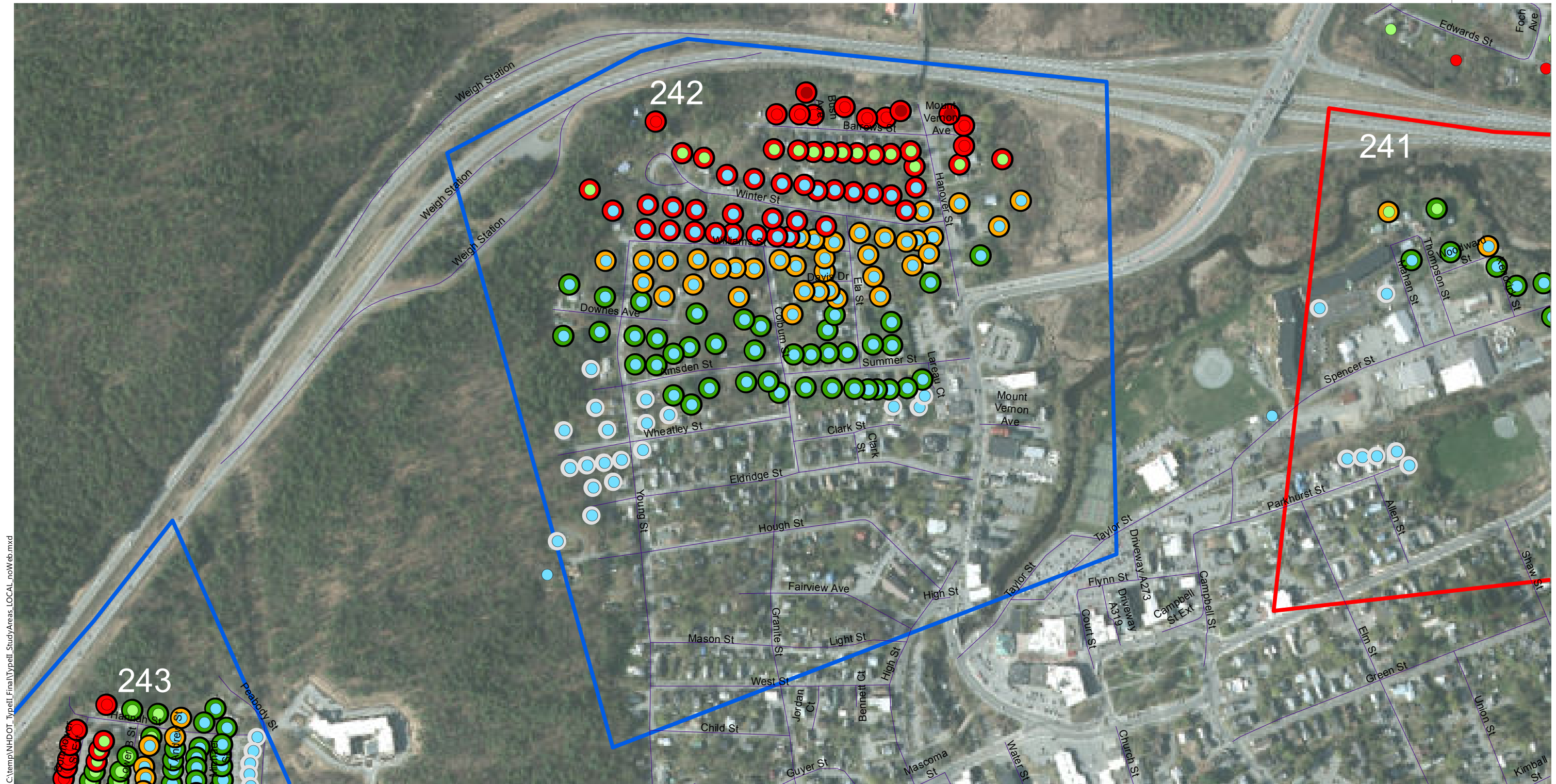
**Insertion Loss (25-ft Barrier)**

- Less than 5 dB
- 5 to 6 dB (Benefit)
- 7 to 9 dB (Benefit/Feasible)
- 10+ dB (Benefit/Design Goal)

**Type II Noise Program Development | Type II Study Areas**

**Barrier Area: 241**  
**Roadway: I-89**  
**Mile Posts Start/End: 4.6 to 5**  
**Barrier Side SB Cost: \$ 0**  
**DEI: 1900 DEI Criteria: 1500**  
**Lebanon, New Hampshire**  
**Ineligible (No Impact)**





C:\temp\NH\DOT\_TypeII\_Final\Typell\_StudyAreas\_LOCAL\_noWeb.mxd

0 100 200 400 Feet

**Study Areas**

- Ineligible for Type II
- Eligible for Type II
- Existing Barrier
- Prior Noise Barrier Study Area
- Existing Noise Barrier in Study Area

**Loudest-hour Noise Level**

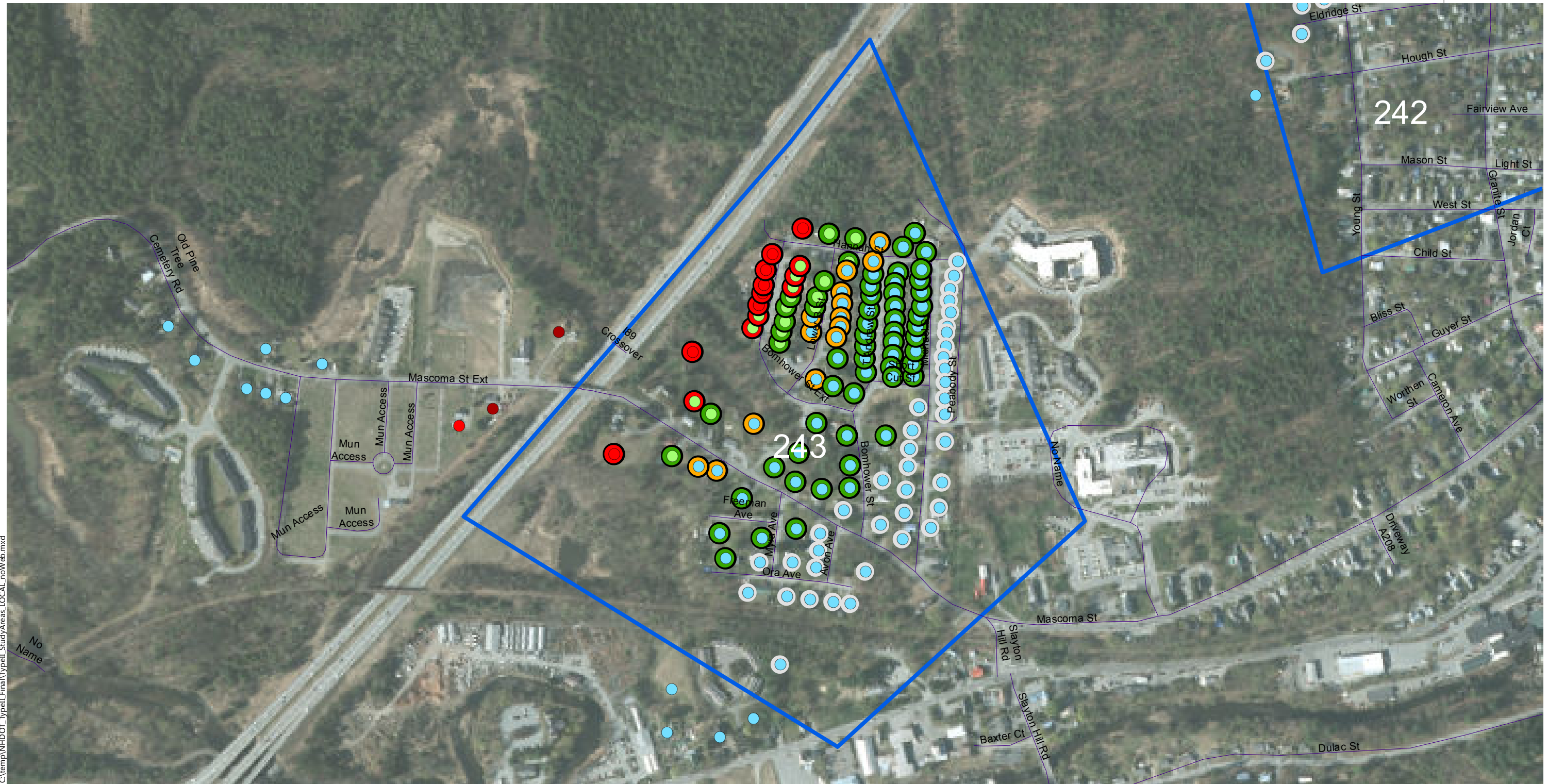
- <61 dBA Leq
- 61 to 65 dBA Leq
- 66 to 70 dBA Leq (Impact)
- >70 dBA Leq (Impact)

**Insertion Loss (25-ft Barrier)**

- Less than 5 dB
- 5 to 6 dB (Benefit)
- 7 to 9 dB (Benefit/Feasible)
- 10+ dB (Benefit/Design Goal)

**Type II Noise Program Development | Type II Study Areas**

**Barrier Area: 242**  
**Roadway: I-89**  
**Mile Posts Start/End: 3.9 to 4.4**  
**Barrier Side SB Cost: \$ 2227500**  
**DEI: 341 DEI Criteria: 1700**  
**Lebanon, New Hampshire**  
**Eligible**



C:\temp\NH\DOT\_Typell\Final\Typell\_StudyAreas\_LOCAL\_noWeb.mxd

0 100 200 400 Feet



**Study Areas**

- Ineligible for Type II
- Eligible for Type II
- Existing Barrier
- Prior Noise Barrier Study Area
- Existing Noise Barrier in Study Area

**Loudest-hour Noise Level**

- <61 dBA Leq
- 61 to 65 dBA Leq
- 66 to 70 dBA Leq (Impact)
- >70 dBA Leq (Impact)

**Insertion Loss (25-ft Barrier)**

- Less than 5 dB
- 5 to 6 dB (Benefit)
- 7 to 9 dB (Benefit/Feasible)
- 10+ dB (Benefit/Design Goal)

**Type II Noise Program Development | Type II Study Areas**

**Barrier Area: 243**  
**Roadway: I-89**  
**Mile Posts Start/End: 3 to 3.5**  
**Barrier Side SB Cost: \$ 1950000**  
**DEI: 844 DEI Criteria: 1700**  
**Lebanon, New Hampshire**  
**Eligible**