

C:\temp\NH\DOT\_TypeII\_Final\TypeII\_StudyAreas\_LOCAL\_noWeb.mxd

0 100 200 400 Feet

**Study Areas**

- Ineligible for Type II
- Eligible for Type II
- Existing Barrier
- Prior Noise Barrier Study Area
- Existing Noise Barrier in Study Area

**Loudest-hour Noise Level**

- <61 dBA Leq
- 61 to 65 dBA Leq
- 66 to 70 dBA Leq (Impact)
- >70 dBA Leq (Impact)

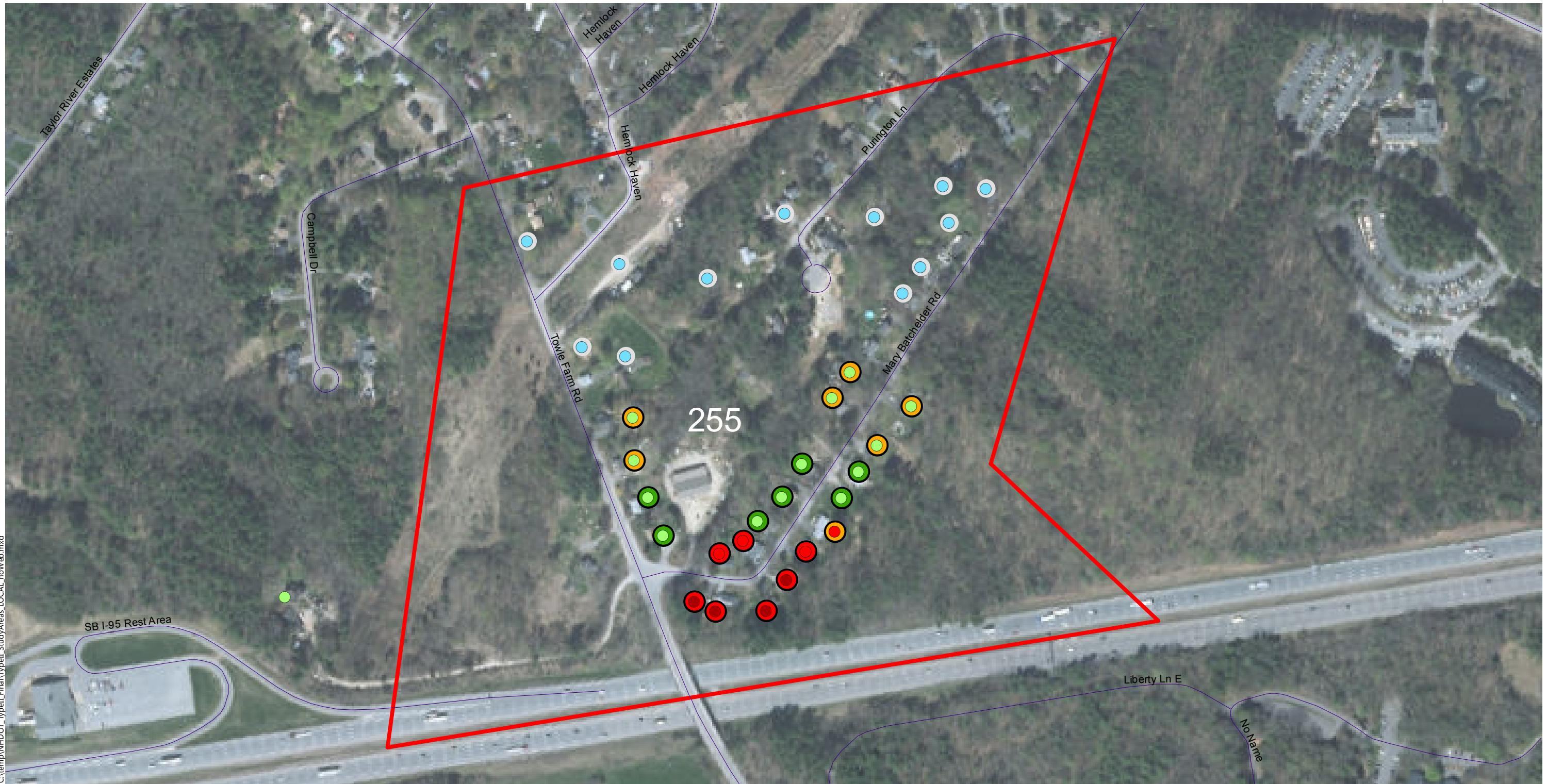
**Insertion Loss (25-ft Barrier)**

- Less than 5 dB
- 5 to 6 dB (Benefit)
- 7 to 9 dB (Benefit/Feasible)
- 10+ dB (Benefit/Design Goal)

**Type II Noise Program Development**

Type II Study Areas

**Barrier Area: 205**  
**Roadway: Route 101**  
**Mile Posts Start/End: 89.9 to 90.8**  
**Barrier Side EB Cost: \$ 0**  
**DEI: 2370 DEI Criteria: 1600**  
**Hampton, New Hampshire**  
**Ineligible (Not Feasible/Reasonable in Prior Type I)**



C:\temp\NH\DOT\_Typell\_Final\Typell\_StudyAreas\_LOCAL\_noWeb.mxd

0 100 200 400 Feet



**Study Areas**

- Ineligible for Type II
- Eligible for Type II
- Existing Barrier
- Prior Noise Barrier Study Area
- Existing Noise Barrier in Study Area

**Loudest-hour Noise Level**

- <61 dBA Leq
- 61 to 65 dBA Leq
- 66 to 70 dBA Leq (Impact)
- >70 dBA Leq (Impact)

**Insertion Loss (25-ft Barrier)**

- Less than 5 dB
- 5 to 6 dB (Benefit)
- 7 to 9 dB (Benefit/Feasible)
- 10+ dB (Benefit/Design Goal)

**Type II Noise Program Development**

Type II Study Areas

**Barrier Area: 255**  
**Roadway: I-95**  
**Mile Posts Start/End: 11.5 to 12**  
**Barrier Side SB Cost: \$ 0**  
**DEI: 2000 DEI Criteria: 1600**  
**Hampton, New Hampshire**  
**Ineligible (DEI)**



C:\temp\NH\DOT\_Typell\_Final\Typell\_StudyAreas\_LOCAL\_noWeb.mxd

0 100 200 400 Feet

**Study Areas**

- Ineligible for Type II
- Eligible for Type II
- Existing Barrier
- Prior Noise Barrier Study Area
- Existing Noise Barrier in Study Area

**Loudest-hour Noise Level**

- <61 dBA Leq
- 61 to 65 dBA Leq
- 66 to 70 dBA Leq (Impact)
- >70 dBA Leq (Impact)

**Insertion Loss (25-ft Barrier)**

- Less than 5 dB
- 5 to 6 dB (Benefit)
- 7 to 9 dB (Benefit/Feasible)
- 10+ dB (Benefit/Design Goal)

**Type II Noise Program Development | Type II Study Areas**

**Barrier Area: 256**  
**Roadway: Route 101**  
**Mile Posts Start/End: 20.2 to 20.6**  
**Barrier Side WB Cost: \$ 0**  
**DEI: 1875      DEI Criteria: 1600**  
**Hampton, New Hampshire**  
**Ineligible (DEI)**



C:\temp\NH\DOT\_Typell\_Final\Typell\_StudyAreas\_LOCAL\_noWeb.mxd

0 100 200 400 Feet



**Study Areas**

- Ineligible for Type II
- Eligible for Type II
- Existing Barrier
- Prior Noise Barrier Study Area
- Existing Noise Barrier in Study Area

**Loudest-hour Noise Level**

- <61 dBA Leq
- 61 to 65 dBA Leq
- 66 to 70 dBA Leq (Impact)
- >70 dBA Leq (Impact)

**Insertion Loss (25-ft Barrier)**

- Less than 5 dB
- 5 to 6 dB (Benefit)
- 7 to 9 dB (Benefit/Feasible)
- 10+ dB (Benefit/Design Goal)

**Type II Noise Program Development**

**Type II Study Areas**

**Barrier Area: 257**  
**Roadway: Route 101**  
**Mile Posts Start/End: 20.7 to 20.9**  
**Barrier Side WB Cost: \$ 0**  
**DEI: INF      DEI Criteria: 1600**  
**Hampton, New Hampshire**  
**Ineligible (No Impact)**