

C:\temp\NH\DOT\_Typell\_Final\Typell\_StudyAreas\_LOCAL\_noWeb.mxd

0 100 200 400 Feet

**Study Areas**

- Ineligible for Type II
- Eligible for Type II
- Existing Barrier
- Prior Noise Barrier Study Area
- Existing Noise Barrier in Study Area

**Loudest-hour Noise Level**

- <61 dBA Leq
- 61 to 65 dBA Leq
- 66 to 70 dBA Leq (Impact)
- >70 dBA Leq (Impact)

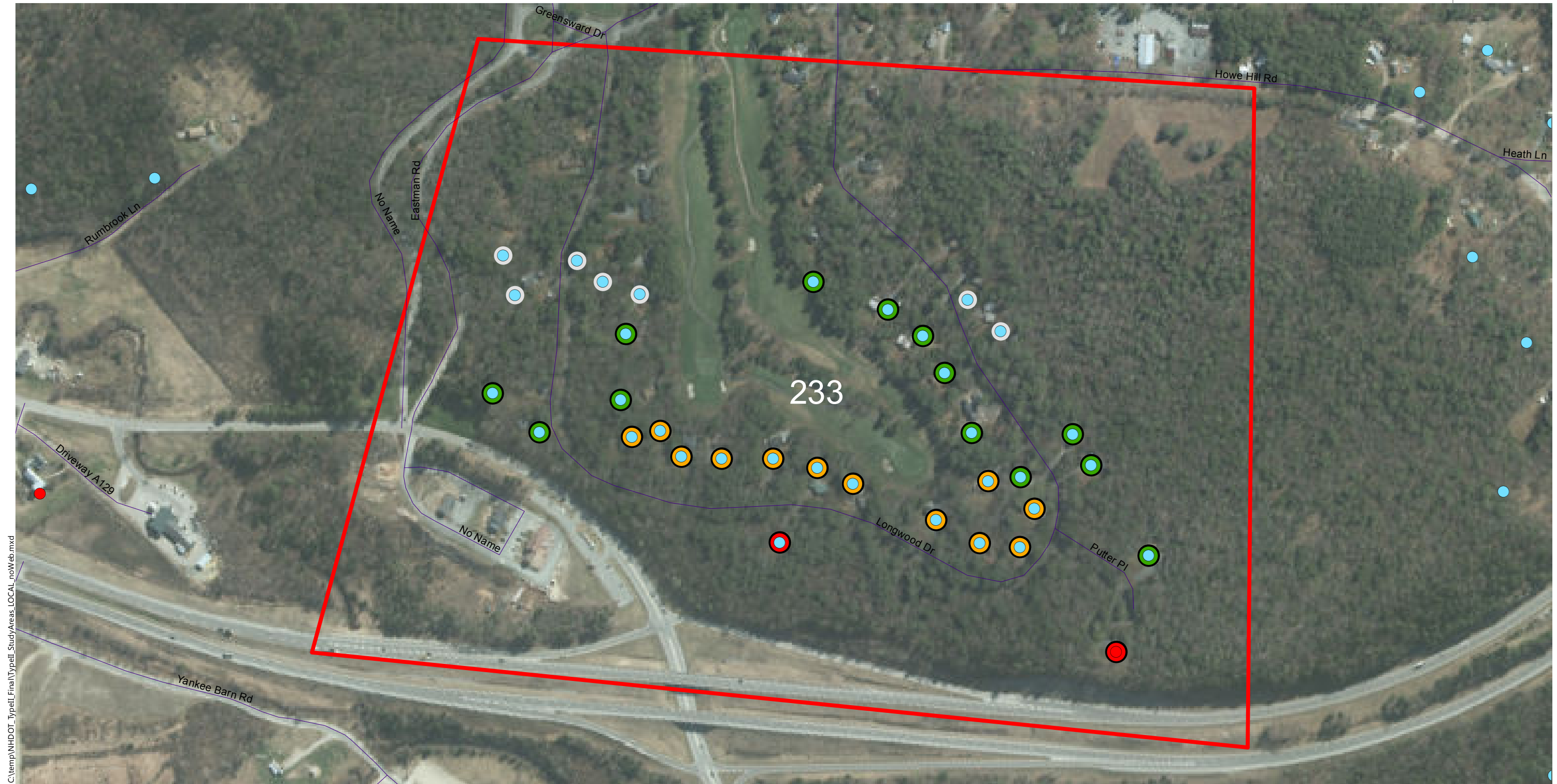
**Insertion Loss (25-ft Barrier)**

- Less than 5 dB
- 5 to 6 dB (Benefit)
- 7 to 9 dB (Benefit/Feasible)
- 10+ dB (Benefit/Design Goal)

**Type II Noise Program Development**

Type II Study Areas

**Barrier Area: 232**  
**Roadway: I-89**  
**Mile Posts Start/End: 19.6 to 20.5**  
**Barrier Side SB Cost: \$ 0**  
**DEI: 2038 DEI Criteria: 1400**  
**Grantham, New Hampshire**  
**Ineligible (No Impact)**



C:\temp\NH\DOT\_Typell\_Final\Typell\_StudyAreas\_LOCAL\_noWeb.mxd

0 100 200 400 Feet

**Study Areas**

- Ineligible for Type II
- Eligible for Type II
- Existing Barrier
- Prior Noise Barrier Study Area
- Existing Noise Barrier in Study Area

**Loudest-hour Noise Level**

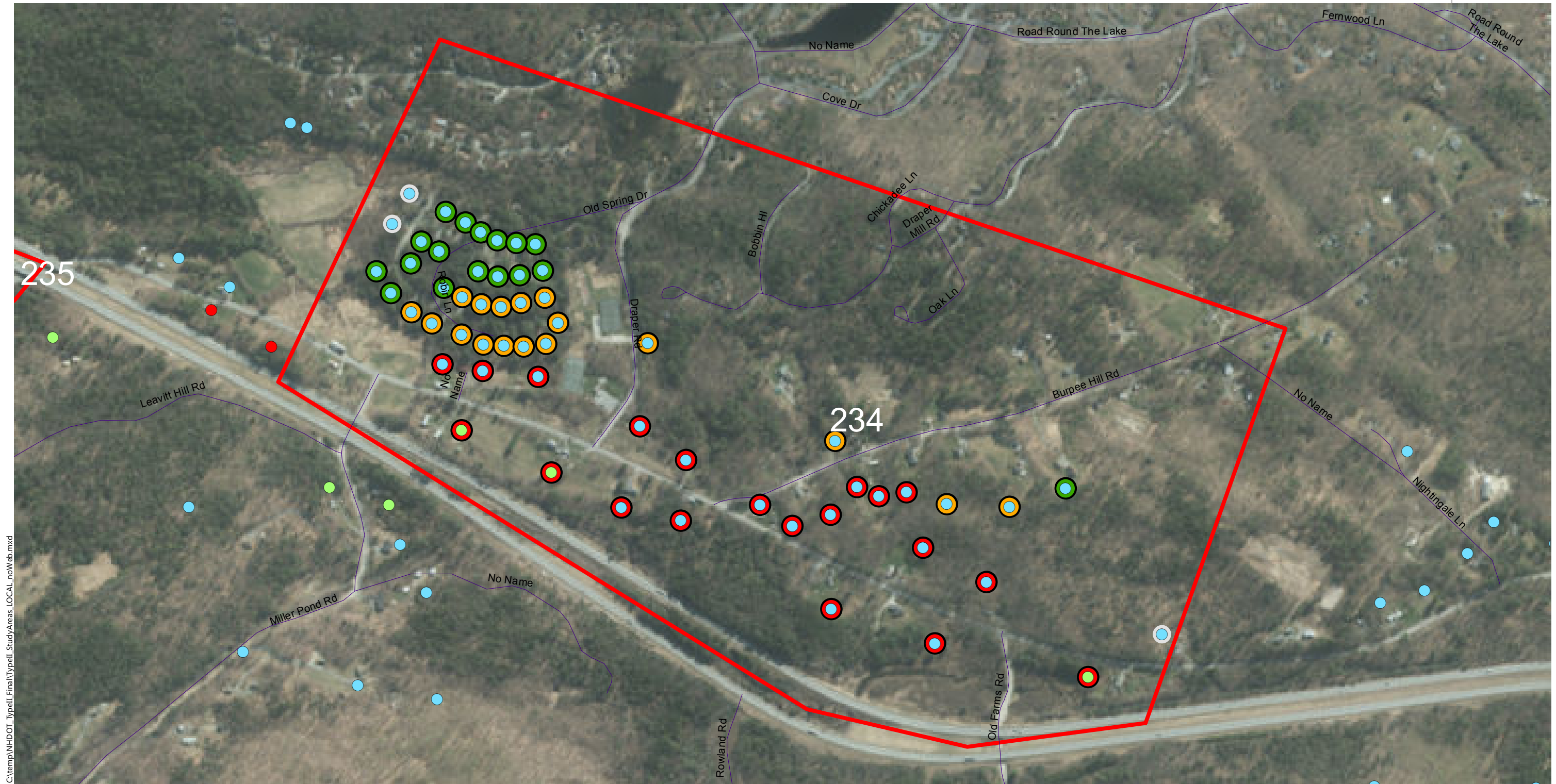
- <61 dBA Leq
- 61 to 65 dBA Leq
- 66 to 70 dBA Leq (Impact)
- >70 dBA Leq (Impact)

**Insertion Loss (25-ft Barrier)**

- Less than 5 dB
- 5 to 6 dB (Benefit)
- 7 to 9 dB (Benefit/Feasible)
- 10+ dB (Benefit/Design Goal)

**Type II Noise Program Development | Type II Study Areas**

**Barrier Area: 233**  
**Roadway: I-89**  
**Mile Posts Start/End: 42.7 to 43.3**  
**Barrier Side NB Cost: \$ 0**  
**DEI: 2605 DEI Criteria: 1400**  
**Grantham, New Hampshire**  
**Ineligible (DEI)**



C:\temp\NH\DOT\_Typell\Final\Typell\_StudyAreas\_LOCAL\_noWeb.mxd

0 100 200 400 Feet

**Study Areas**

- Ineligible for Type II
- Eligible for Type II
- Existing Barrier
- Prior Noise Barrier Study Area
- Existing Noise Barrier in Study Area

**Loudest-hour Noise Level**

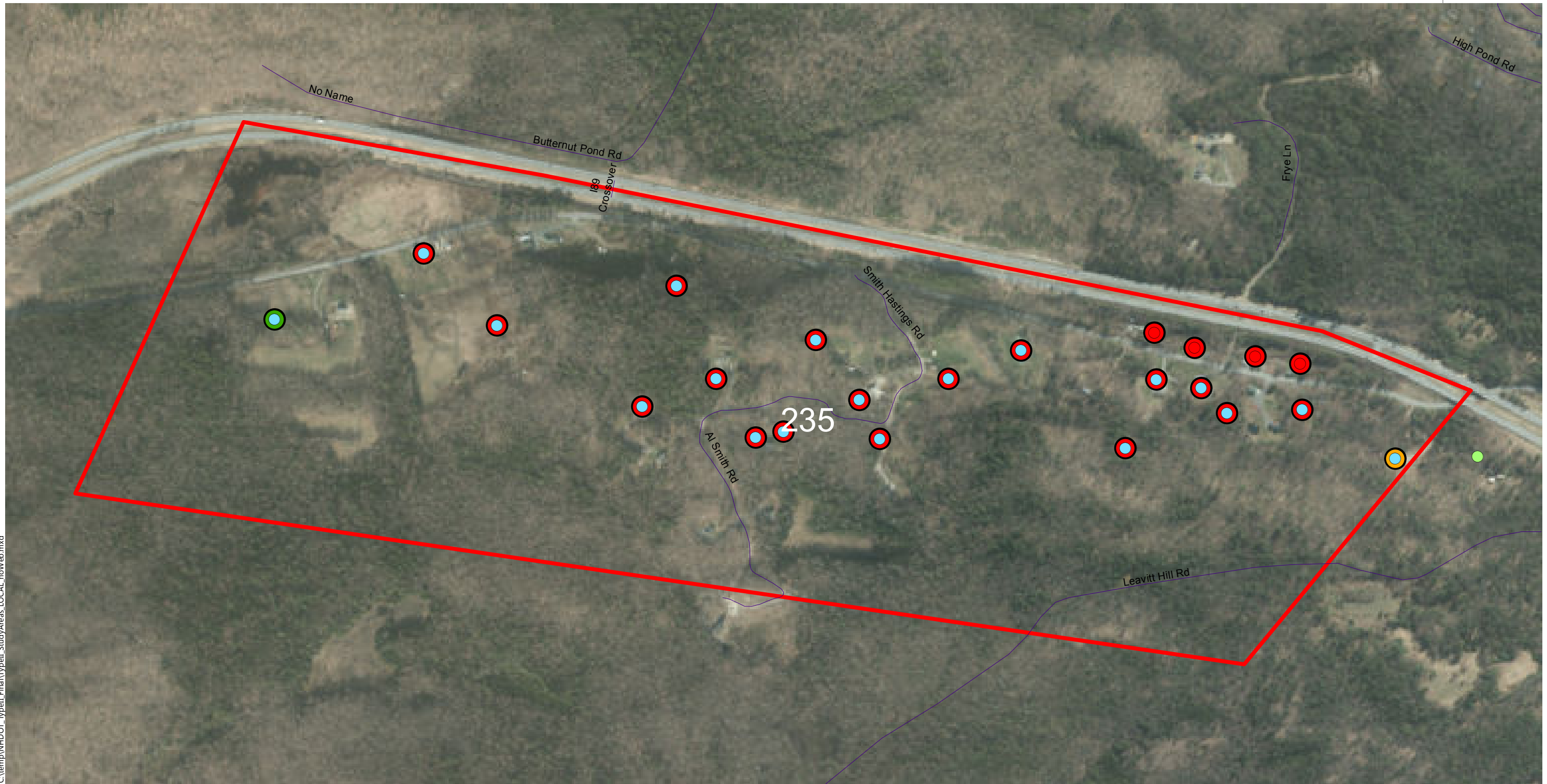
- <61 dBA Leq
- 61 to 65 dBA Leq
- 66 to 70 dBA Leq (Impact)
- >70 dBA Leq (Impact)

**Insertion Loss (25-ft Barrier)**

- Less than 5 dB
- 5 to 6 dB (Benefit)
- 7 to 9 dB (Benefit/Feasible)
- 10+ dB (Benefit/Design Goal)

**Type II Noise Program Development | Type II Study Areas**

**Barrier Area: 234**  
**Roadway: I-89**  
**Mile Posts Start/End: 44.5 to 45.6**  
**Barrier Side NB Cost: \$ 0**  
**DEI: 1861 DEI Criteria: 1400**  
**Grantham, New Hampshire**  
**Ineligible (No Impact)**



C:\temp\NH\DOT\_Typell\_Final\Typell\_StudyAreas\_LOCAL\_noWeb.mxd

010200 400 Feet



**Study Areas**

- Ineligible for Type II
- Eligible for Type II
- Existing Barrier
- Prior Noise Barrier Study Area
- Existing Noise Barrier in Study Area

**Loudest-hour Noise Level**

- <61 dBA Leq
- 61 to 65 dBA Leq
- 66 to 70 dBA Leq (Impact)
- >70 dBA Leq (Impact)

**Insertion Loss (25-ft Barrier)**

- Less than 5 dB
- 5 to 6 dB (Benefit)
- 7 to 9 dB (Benefit/Feasible)
- 10+ dB (Benefit/Design Goal)

**Type II Noise Program Development**

Type II Study Areas

**Barrier Area: 235**

**Roadway: I-89**

**Mile Posts Start/End: 13.4 to 15**

**Barrier Side SB Cost: \$ 0**

**DEI: 4010 DEI Criteria: 1400**

**Grantham, New Hampshire**

**Ineligible (DEI)**