

C:\temp\NH\DOT_Typell_Final\Typell_StudyAreas_LOCAL_noWeb.mxd

0 100 200 400 Feet



Study Areas

- Ineligible for Type II
- Eligible for Type II
- Existing Barrier
- Prior Noise Barrier Study Area
- Existing Noise Barrier in Study Area

Loudest-hour Noise Level

- <61 dBA Leq
- 61 to 65 dBA Leq
- 66 to 70 dBA Leq (Impact)
- >70 dBA Leq (Impact)

Insertion Loss (25-ft Barrier)

- Less than 5 dB
- 5 to 6 dB (Benefit)
- 7 to 9 dB (Benefit/Feasible)
- 10+ dB (Benefit/Design Goal)

Type II Noise Program Development

Type II Study Areas

Barrier Area: 200
Roadway: Route 101
Mile Posts Start/End: 29.6 to 30.3
Barrier Side WB Cost: \$ 0
DEI: 2792 DEI Criteria: 1600
Exeter, New Hampshire
Ineligible (Not Feasible/Reasonable in Prior Type I)



C:\temp\NH\DOT_Typell_Final\Typell_StudyAreas_LOCAL_noWeb.mxd

0 100 200 400 Feet

Study Areas

- Ineligible for Type II
- Eligible for Type II
- Existing Barrier
- Prior Noise Barrier Study Area
- Existing Noise Barrier in Study Area

Loudest-hour Noise Level

- <61 dBA Leq
- 61 to 65 dBA Leq
- 66 to 70 dBA Leq (Impact)
- >70 dBA Leq (Impact)

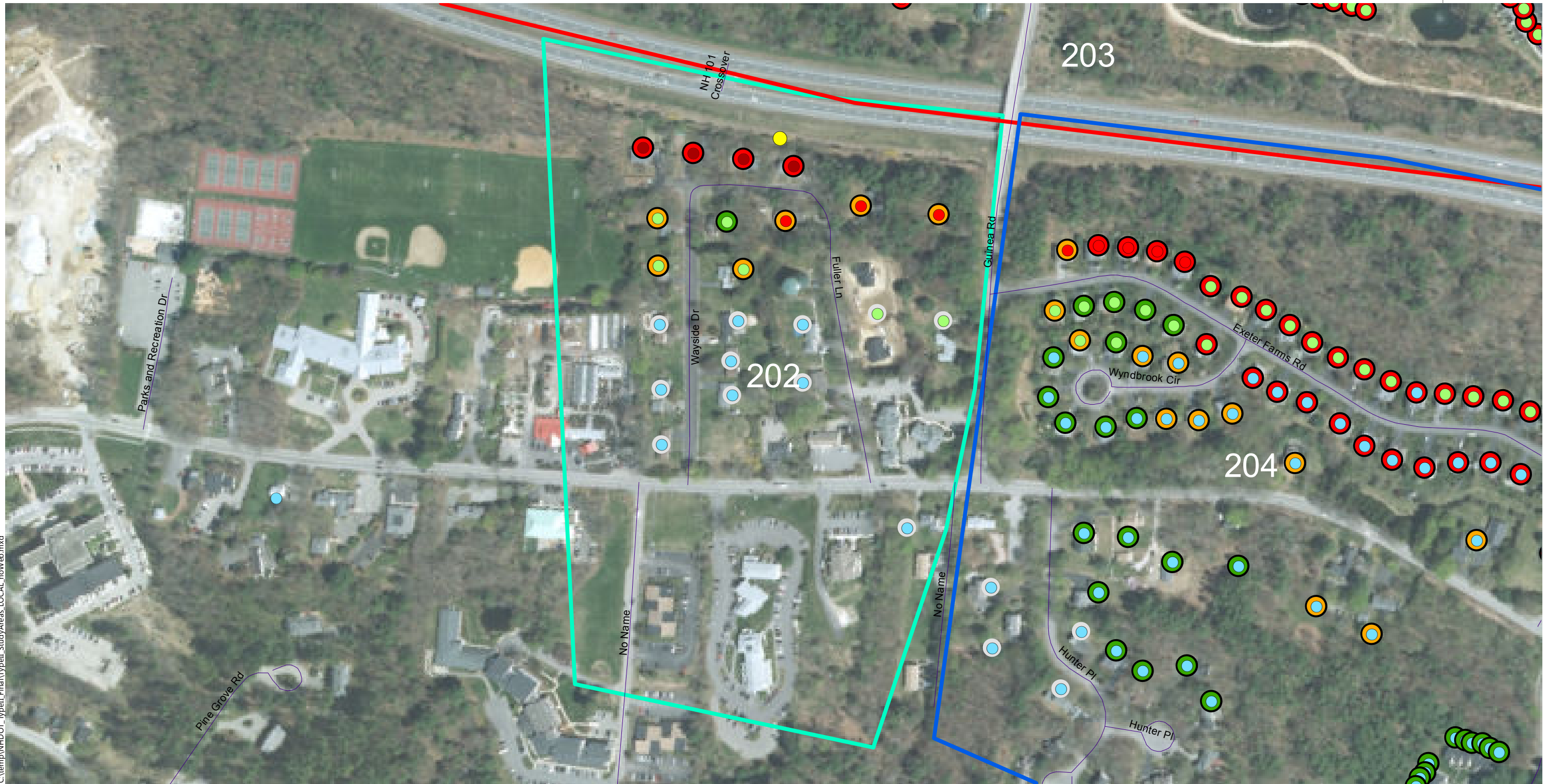
Insertion Loss (25-ft Barrier)

- Less than 5 dB
- 5 to 6 dB (Benefit)
- 7 to 9 dB (Benefit/Feasible)
- 10+ dB (Benefit/Design Goal)

Type II Noise Program Development

Type II Study Areas

Barrier Area: 201
Roadway: Route 101
Mile Posts Start/End: 85.2 to 85.6
Barrier Side EB Cost: \$ 0
DEI: 4067 DEI Criteria: 1600
Exeter, New Hampshire
Ineligible (Not Feasible/Reasonable in Prior Type I)



C:\temp\NH\DOT_Typell_Final\Typell_StudyAreas_LOCAL_noWeb.mxd

0 100 200 400 Feet

Study Areas

- Ineligible for Type II
- Eligible for Type II
- Existing Barrier
- Prior Noise Barrier Study Area
- Existing Noise Barrier in Study Area

Loudest-hour Noise Level

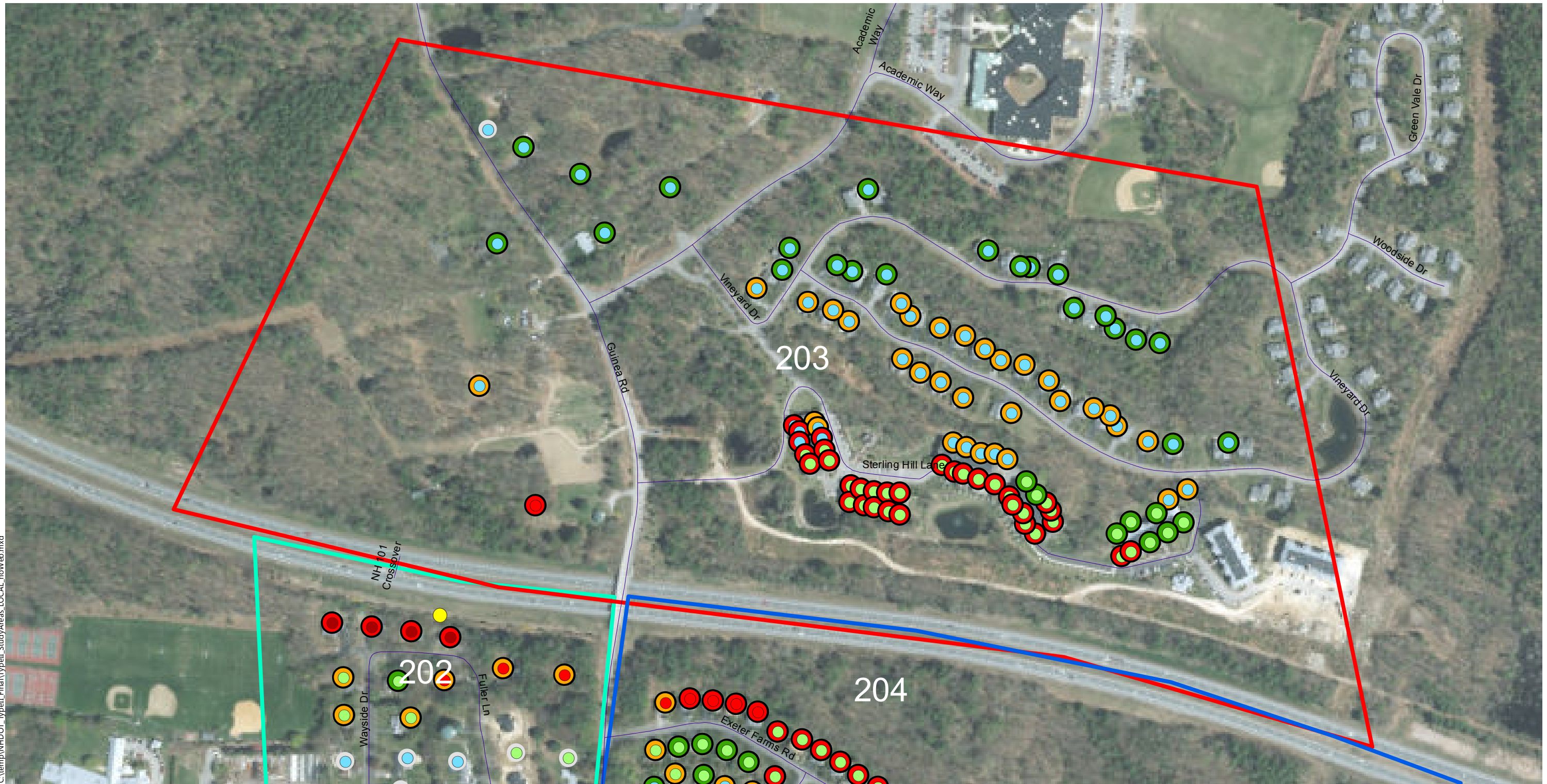
- <61 dBA Leq
- 61 to 65 dBA Leq
- 66 to 70 dBA Leq (Impact)
- >70 dBA Leq (Impact)

Insertion Loss (25-ft Barrier)

- Less than 5 dB
- 5 to 6 dB (Benefit)
- 7 to 9 dB (Benefit/Feasible)
- 10+ dB (Benefit/Design Goal)

Type II Noise Program Development | Type II Study Areas

Barrier Area: 202
Roadway: Route 101
Mile Posts Start/End: 87.7 to 87.9
Barrier Side EB Cost: \$ 0
DEI: 1385 DEI Criteria: 1600
Exeter, New Hampshire
Existing Barrier



C:\temp\NH\DOT_Typell_Final\Typell_StudyAreas_LOCAL_noWeb.mxd

0 100 200 400 Feet

Study Areas

- Ineligible for Type II
- Eligible for Type II
- Existing Barrier
- Prior Noise Barrier Study Area
- Existing Noise Barrier in Study Area

Loudest-hour Noise Level

- <61 dBA Leq
- 61 to 65 dBA Leq
- 66 to 70 dBA Leq (Impact)
- >70 dBA Leq (Impact)

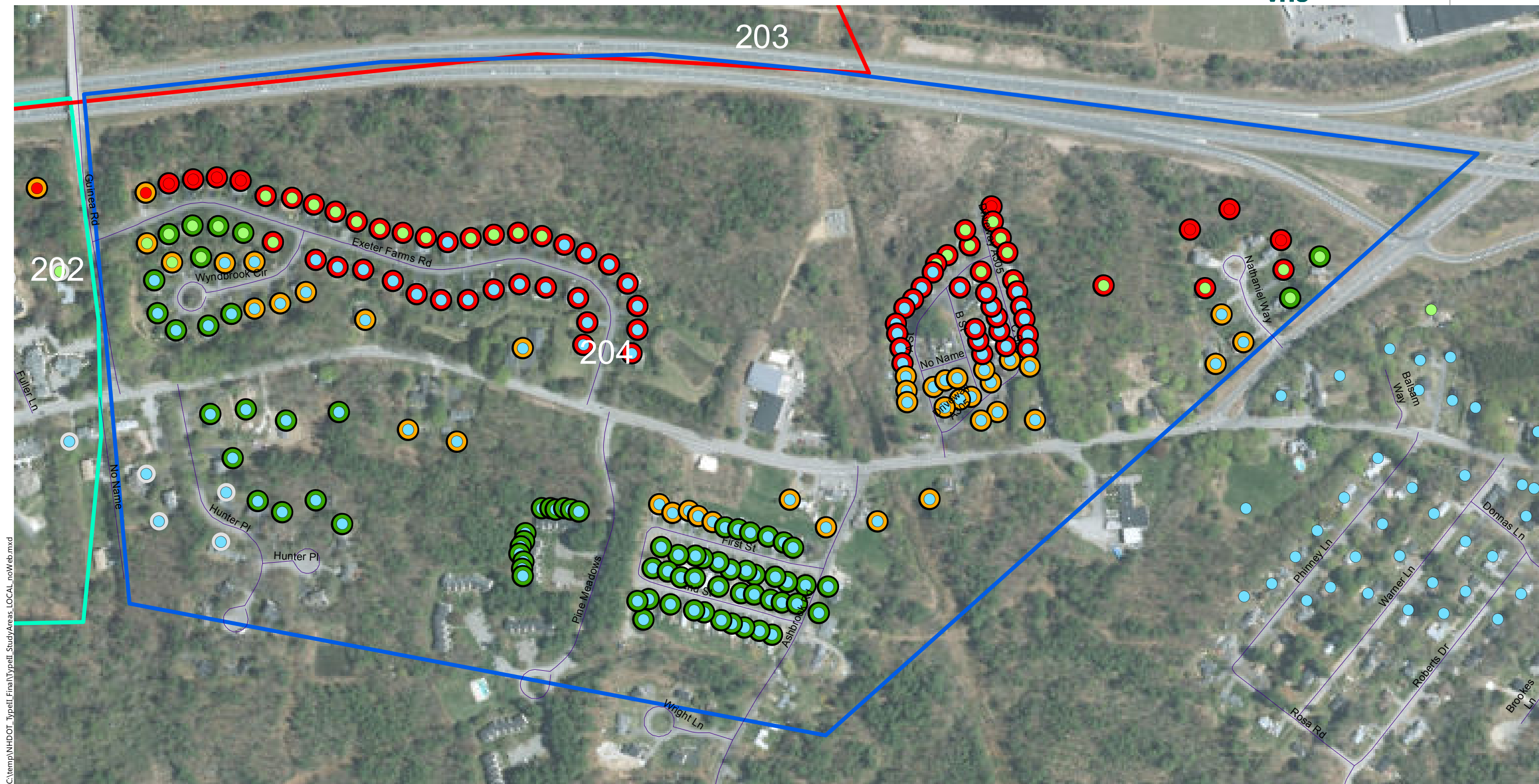
Insertion Loss (25-ft Barrier)

- Less than 5 dB
- 5 to 6 dB (Benefit)
- 7 to 9 dB (Benefit/Feasible)
- 10+ dB (Benefit/Design Goal)

Type II Noise Program Development

Type II Study Areas

Barrier Area: 203
Roadway: Route 101
Mile Posts Start/End: 23.5 to 24.2
Barrier Side WB Cost: \$ 0
DEI: 1068 DEI Criteria: 1600
Exeter, New Hampshire
Ineligible (Not Feasible/Reasonable in Prior Type I)



C:\temp\NH\DOT_TypeII_Final\TypeII_StudyAreas_LOCAL_noWeb.mxd

0 100 200 400 Feet

Study Areas

- Ineligible for Type II
- Eligible for Type II
- Existing Barrier
- Prior Noise Barrier Study Area
- Existing Noise Barrier in Study Area

Loudest-hour Noise Level

- <61 dBA Leq
- 61 to 65 dBA Leq
- 66 to 70 dBA Leq (Impact)
- >70 dBA Leq (Impact)

Insertion Loss (25-ft Barrier)

- Less than 5 dB
- 5 to 6 dB (Benefit)
- 7 to 9 dB (Benefit/Feasible)
- 10+ dB (Benefit/Design Goal)

Type II Noise Program Development

Type II Study Areas

Barrier Area: 204
Roadway: Route 101
Mile Posts Start/End: 87.9 to 88.7
Barrier Side EB Cost: \$ 4500000
DEI: 1034 DEI Criteria: 1600
Exeter, New Hampshire
Eligible