

C:\temp\NHDOT_Typell_Final\Typell_StudyAreas_LOCAL_noWeb.mxd

0 100 200 400 Feet

Study Areas

- Ineligible for Type II
- Eligible for Type II
- Existing Barrier
- Prior Noise Barrier Study Area
- Existing Noise Barrier in Study Area

Loudest-hour Noise Level

- <61 dBA Leq
- 61 to 65 dBA Leq
- 66 to 70 dBA Leq (Impact)
- >70 dBA Leq (Impact)

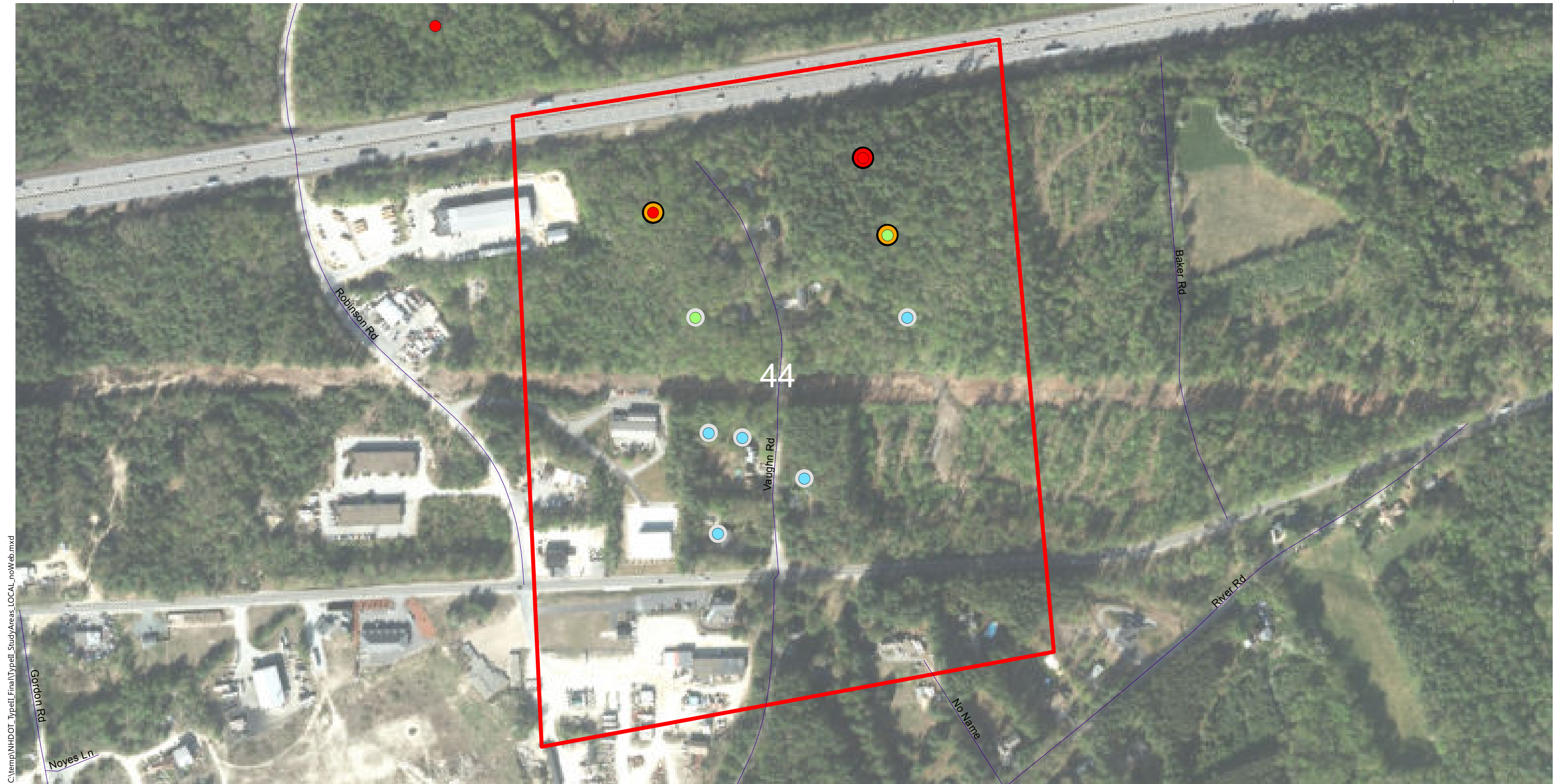
Insertion Loss (25-ft Barrier)

- Less than 5 dB
- 5 to 6 dB (Benefit)
- 7 to 9 dB (Benefit/Feasible)
- 10+ dB (Benefit/Design Goal)

Type II Noise Program Development

Type II Study Areas

Barrier Area: 43
Roadway: I-93
Mile Posts Start/End: 32.6 to 33.2
Barrier Side NB Cost: \$ 0
DEI: 5767 DEI Criteria: 1500
Bow, New Hampshire
Ineligible (No Impact)



C:\temp\NH\DOT_Typell\Final\Typell_StudyAreas_LOCAL_noWeb.mxd

0 100 200 400 Feet

Study Areas

- Ineligible for Type II
- Eligible for Type II
- Existing Barrier
- Prior Noise Barrier Study Area
- Existing Noise Barrier in Study Area

Loudest-hour Noise Level

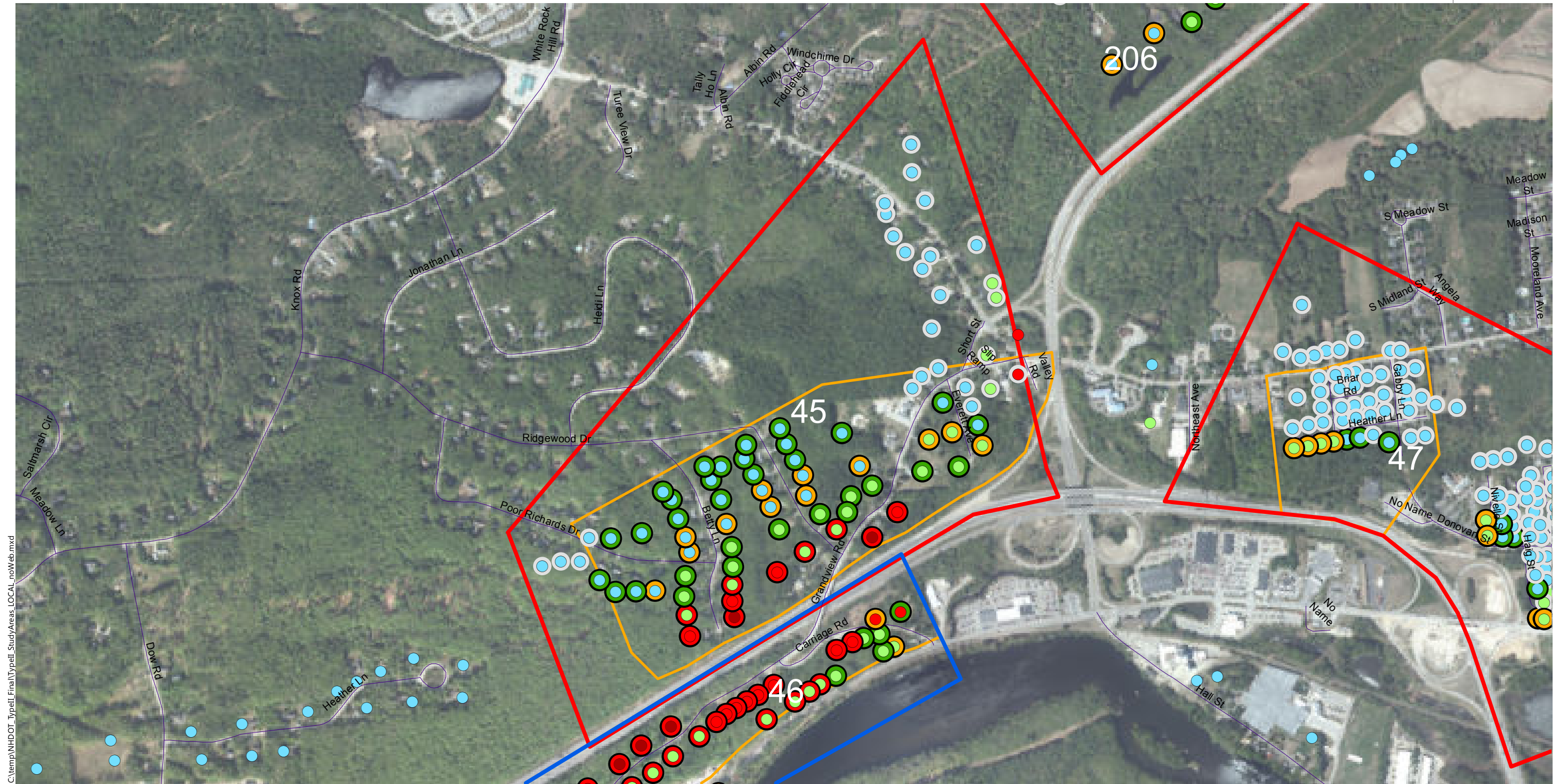
- <61 dBA Leq
- 61 to 65 dBA Leq
- 66 to 70 dBA Leq (Impact)
- >70 dBA Leq (Impact)

Insertion Loss (25-ft Barrier)

- Less than 5 dB
- 5 to 6 dB (Benefit)
- 7 to 9 dB (Benefit/Feasible)
- 10+ dB (Benefit/Design Goal)

Type II Noise Program Development | Type II Study Areas

Barrier Area: 44
Roadway: I-93
Mile Posts Start/End: 34.1 to 34.4
Barrier Side NB Cost: \$ 0
DEI: 7950 DEI Criteria: 1500
Bow, New Hampshire
Ineligible (DEI, Insertion Loss)



C:\temp\NH\DOT_Typell_Final\Typell_StudyAreas_LOCAL_noWeb.mxd

0 100 200 400 Feet



Study Areas

- Ineligible for Type II
- Eligible for Type II
- Existing Barrier
- Prior Noise Barrier Study Area
- Existing Noise Barrier in Study Area

Loudest-hour Noise Level

- <61 dBA Leq
- 61 to 65 dBA Leq
- 66 to 70 dBA Leq (Impact)
- >70 dBA Leq (Impact)

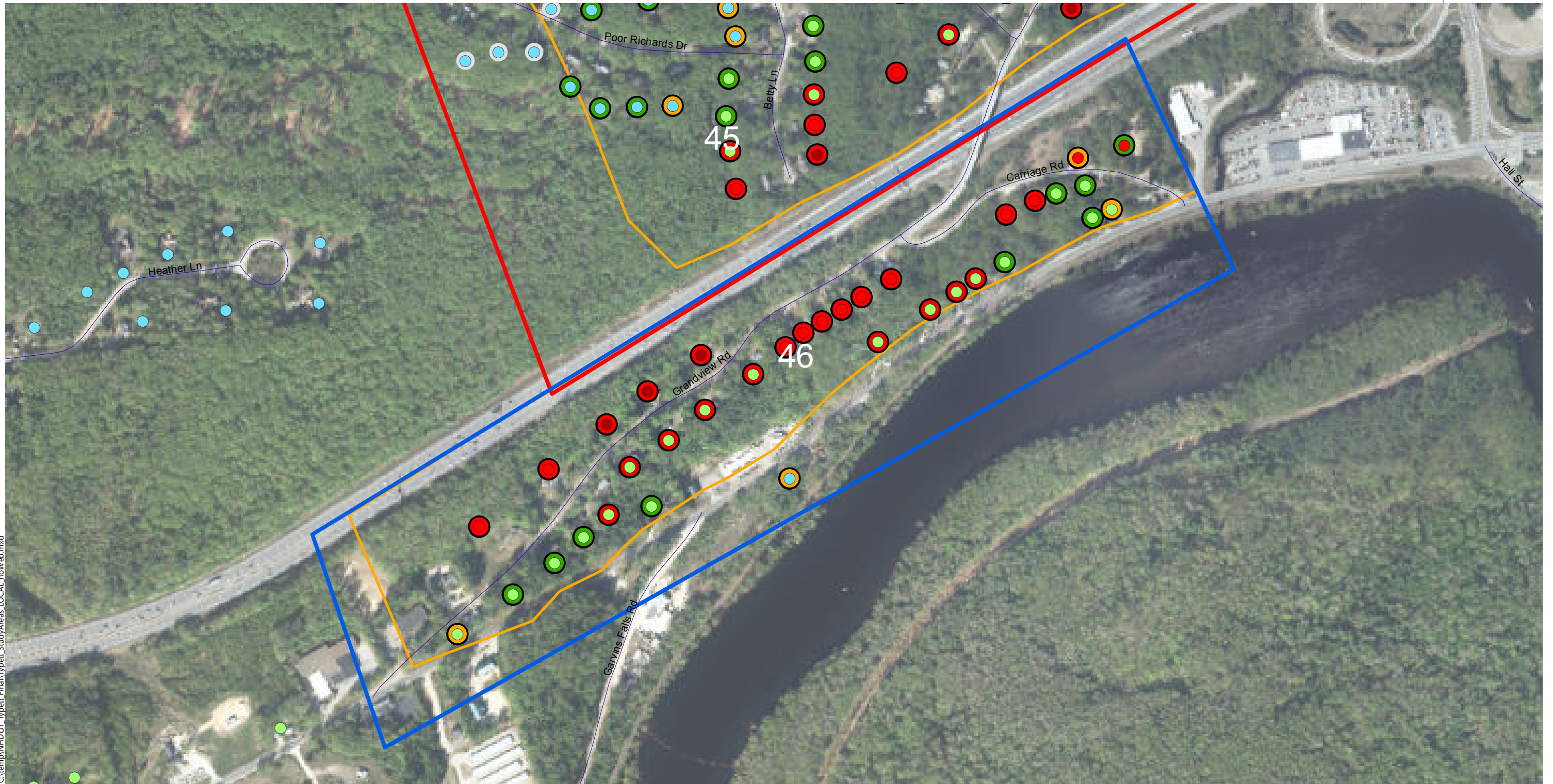
Insertion Loss (25-ft Barrier)

- Less than 5 dB
- 5 to 6 dB (Benefit)
- 7 to 9 dB (Benefit/Feasible)
- 10+ dB (Benefit/Design Goal)

Type II Noise Program Development

Type II Study Areas

Barrier Area: 45
Roadway: I-93
Mile Posts Start/End: 3 to 3.8
Barrier Side SB Cost: \$ 0
DEI: 1420 DEI Criteria: 1500
Bow, New Hampshire
Ineligible (Not Feasible/Reasonable in Prior Type I)



C:\temp\NH\DOT_Typell_Final\Typell_StudyAreas_LOCAL_noWeb.mxd

0 100 200 400 Feet

Study Areas

- Ineligible for Type II
- Eligible for Type II
- Existing Barrier
- Prior Noise Barrier Study Area
- Existing Noise Barrier in Study Area

Loudest-hour Noise Level

- <61 dBA Leq
- 61 to 65 dBA Leq
- 66 to 70 dBA Leq (Impact)
- >70 dBA Leq (Impact)

Insertion Loss (25-ft Barrier)

- Less than 5 dB
- 5 to 6 dB (Benefit)
- 7 to 9 dB (Benefit/Feasible)
- 10+ dB (Benefit/Design Goal)

Type II Noise Program Development

Type II Study Areas

Barrier Area: 46
Roadway: I-93
Mile Posts Start/End: 35.4 to 36.2
Barrier Side NB Cost: \$ 1296000
DEI: 1440 DEI Criteria: 1500
Bow, New Hampshire
Eligible



C:\temp\NH\DOT_Typell_Final\Typell_StudyAreas_LOCAL_noWeb.mxd

0 100 200 400 Feet

Study Areas

- Ineligible for Type II
- Eligible for Type II
- Existing Barrier
- Prior Noise Barrier Study Area
- Existing Noise Barrier in Study Area

Loudest-hour Noise Level

- <61 dBA Leq
- 61 to 65 dBA Leq
- 66 to 70 dBA Leq (Impact)
- >70 dBA Leq (Impact)

Insertion Loss (25-ft Barrier)

- Less than 5 dB
- 5 to 6 dB (Benefit)
- 7 to 9 dB (Benefit/Feasible)
- 10+ dB (Benefit/Design Goal)

Type II Noise Program Development | Type II Study Areas

Barrier Area: 206
Roadway: I-89
Mile Posts Start/End: 59.9 to 60.4
Barrier Side SB Cost: \$ 0
DEI: 7680 DEI Criteria: 1400
Bow, New Hampshire
Ineligible (No Impact)