



NHDOT CAD/D Connect Documentation

CONNECT DOCUMENTATION

[Connect Edition Introduction](#)

[MicroStation Connect Documentation](#)

[OpenRoads Designer Documentation \(Survey\)](#)

[OpenRoads Designer Documentation \(Design\)](#)

[Appendices](#)

Appendices

Contents

Appendix.....	2
A-1-1: Installing Openroads Designer	2
A-1-2: CivilFileManager.exe to Change Civil File Schema.....	4
A-1-3: Create Debug File for Trouble Shooting.....	6
A-1-4: Windows Explorer - Folder Options.....	7



Appendix

A-1-1: Installing OpenRoads Designer

[Return to Index](#)

Before You Begin

Uninstall ORD or MicroStation by clicking on the Start menu and typing **Add...** And select Add or remove programs. Scroll down until you find your version of the program and click Uninstall. Accept through the prompts and wait.

Install OpenRoads Designer

Open the folder where the installation files are stored and double click on the latest "Setup..." executable. The current version is *Setup_OpenRoadsDesignerx64_10.10.01.003.exe* (version 2021-R1). This will start the installer. Accept through any prompts to finish the installation process.

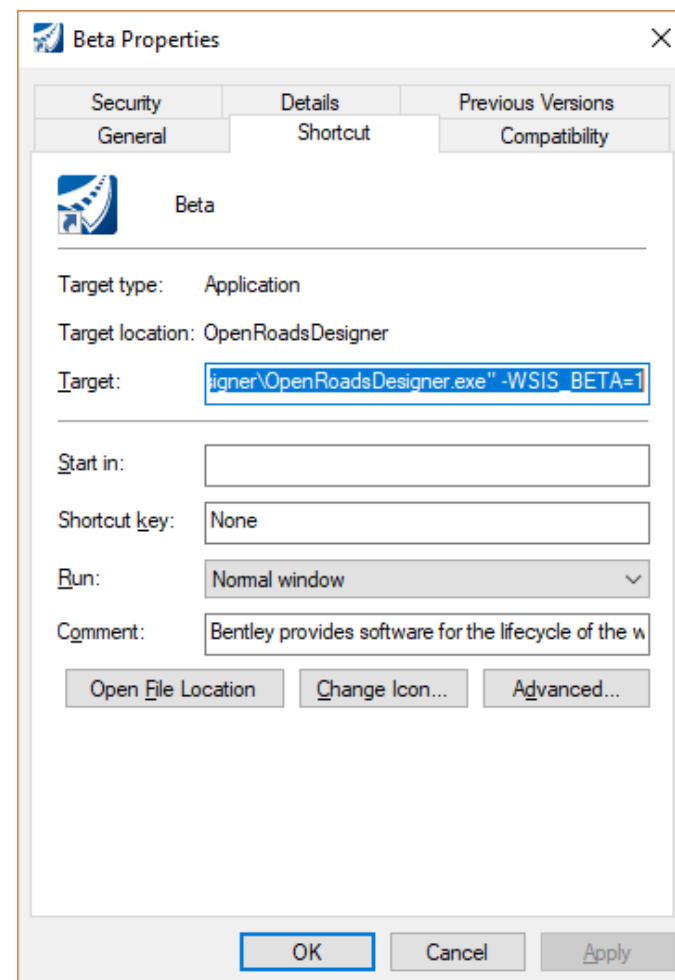
The latest version does not overwrite previous versions, so they remain installed unless manually removed.

If you had a previous CE version installed on your computer, the desktop icons should be all set.

The *ConfigurationSetup.cfg* file needs to be copied from the directory to *C:\ProgramData\Bentley\OpenRoads Designer CE\Configuration* replacing the one found there. This file points to the NHDOT configured workspaces.

For MicroStation, the configuration file needs to be copied from the MicroStation installation folder into *C:\ProgramData\Bentley\MicroStation CONNECT Edition\Configuration*.

To run the beta version of ORD or MicroStation, add a new icon to the desktop from the Start menu. Right click on the new one and select **Properties**. In the Shortcut tab add a space and **-WSIS_BETA=1** to the end of the target sting.





NHDOT CAD/D Connect Documentation

Delete Civil Command History

Delete the contents of the civil command folder to prevent issues with new commands not showing the full options available for the command.

C:\Users\username\AppData\Local\Bentley\OpenRoadsDesigner\10.0.0\prefs\civil_commands\

TEST IT!



NHDOT CAD/D Connect Documentation

A-1-2: CivilFileManager.exe to Change Civil File Schema

Run It!

C:\Program Files\Bentley\OpenRoads Designer CONNECT Edition\OpenRoadsDesigner\CivilFileManager.exe

It is suggested that if the file to be converted needs to be in its original location that it should be moved first to another folder as the DownGrade'd file cannot be saved to the same location.

File > Open select the *file\folder* or *Folder + sub-Folders* you want to view and convert. View > update contents shows the file information. Select the file then Action > DownGrade Civil Model. Select the Folder for the down graded file to be put into.

The screenshot shows the Civil File Manager application window. The main area displays a table of schema details for the file '41251-p-borings.dgn'. A dialog box is overlaid on the bottom right, providing information about a Technology Preview.

Name	Schema Version	Product Version	On	By	Version	Path
Bentley_Civil_Objects	02.04.00.00	OpenRoads Designer				n:\c
Bentley_Civil__Model_Base	04.08.52.01	OpenRoads Designer Update 9	Friday, October 23, 2020	OpenRoadsDesigner	10.09.00.91	n:\c
Bentley_Civil__Model_ContentManagement	04.08.52.00	OpenRoads Designer Update 9	Friday, October 23, 2020	OpenRoadsDesigner	10.09.00.91	n:\c
Bentley_Civil__Model_DTMFilterGroups	04.08.48.01	OpenRoads Designer Update 9	Friday, October 23, 2020	OpenRoadsDesigner	10.09.00.91	n:\c
Bentley_Civil__Model_FilterGroups	04.08.48.01	OpenRoads				
Bentley_Civil__Model_Geometry	04.08.82.05	OpenRoads				
Bentley_Civil__Model_Geometry_ContentManagement	04.08.54.01	OpenRoads				
Bentley_Civil__Model_HydBaseSchema	04.08.54.01	OpenRoads				
Bentley_Civil__Model_HydGraphicalFilterSchema	04.08.48.01	OpenRoads				
IMPLBASE_Bentley_Civil__Model_Base	01.00.00.00	OpenRoads				
NATEQ_Bentley_Civil__Model_Base	04.08.52.01	OpenRoads				
NATEQ_Bentley_Civil__Model_Geometry	04.08.82.05	OpenRoads				

This functionality is part of a Technology Preview.

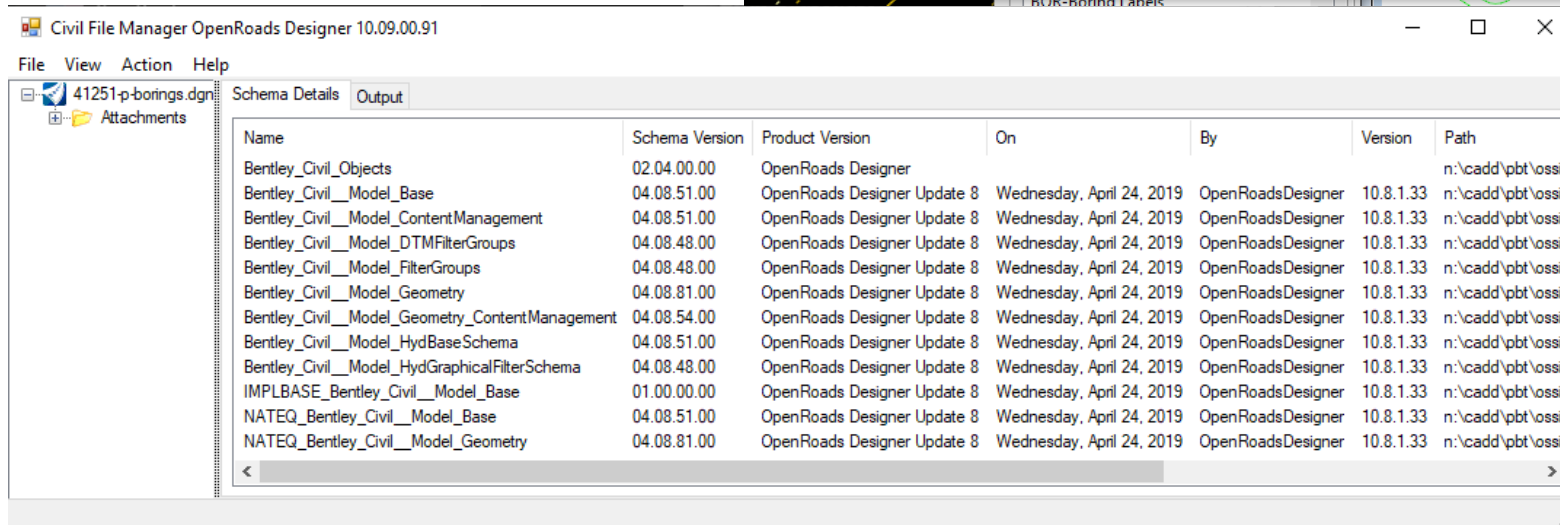
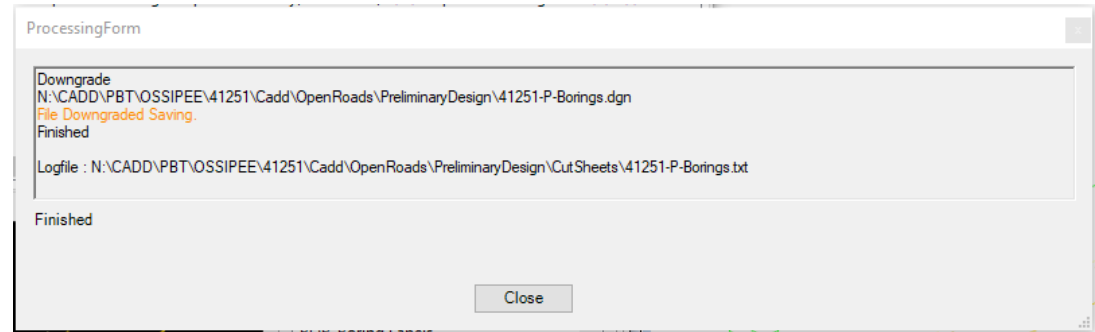
Take advantage of this Technology Preview, a non-public software service and/or application for evaluation purposes only. Please use the Technology Preview in your normal business environment as needed to form an opinion concerning the performance of the Technology Preview. Bentley personnel would welcome your valued feedback concerning the performance of the Technology Preview as you evaluate the capabilities. Please be aware that at some point, you may receive notice from Bentley that such use must cease or this Technology Preview will become unavailable to you. As we receive feedback, this Technology Preview may also be enhanced, updated or also discontinued without notice. As a Technology Preview, it is provided to you "as-is" without the benefit of any Bentley warranty, indemnity or support obligation. Thank you!

OK



NHDOT CAD/D Connect Documentation

After clicking ok the file(s) will be downgraded and the results shown. Use the File > Open and select the downgraded file to confirm.



[Return to Index](#)



NHDOT CAD/D Connect Documentation

A-1-3: Create Debug File for Trouble Shooting

Introduction

When using Bentley Software, problems sometimes arise. One of the ways used to figure out what the problem is, is to create an `msdebug.txt` file. This file is a dump of all the configuration files that are run and shows all the variables being defined in the software as it opens a project and drawing. It can be reviewed and compared to a debug dump of a working installation to determine if all the configuration variables are being defined correctly.

Create the `msdebug.txt` file

Open the folder <N:\CADD\CADD\install\BentleyDEBUG> and **double-click** on the debug shortcut to the product your having trouble with. This will ask if you want to open/run the debugger and then popup a window of the process with an End message telling you where the `msdebug.txt` file is saved.

The folder location can be accessed by double clicking on the shortcut in the Bentley DEBUG folder. Sort \Temp\ folder by Date and the file should be at the top. Right Click on the file, **Send To > Mail Recipient >** and send it to the CADD Staffer that you are working with.

Note that when running a debug of a Connect product the `msdebug.txt` file will automatically open in the default Text Editor and can be saved to another location using **Save As**.

```
MicroStation V8i (SELECTseries 10) - Text Window
TOWN      : project      = DANBURY
STNO      : project      = 16303
NHPROJ    : project      = N.H. PROJECT NO. 16303
ROWTOWN   : project      = TOWN OF DANBURY
COUNTY   : project      = COUNTY OF
FEDNO     : project      = HP-BRF-T-2000(019)
ROUTENO   : project      = NH ROUTE 119
RSHTOT    : project      = (null)
WSHTOT    : project      = (null)
CSHTOT    : project      = (null)
MRSHTOT   : project      = (null)
PROJCLASS : project      = (null)
REVNUM    : project      = (null)
REVDATE   : project      = (null)
BT        : project      = (null)
BRNO      : project      = (null)
BRDESCR   : project      = NH ROUTE 119 over CONNECTICUT RIVER
BRFILNO   : project      = (null)

#####
# End of Configuration Variable Summary #
#####
End of macros...
Debugging output saved to [C:\Users\N34EDM\AppData\Local\Temp\msdebug.txt]
```

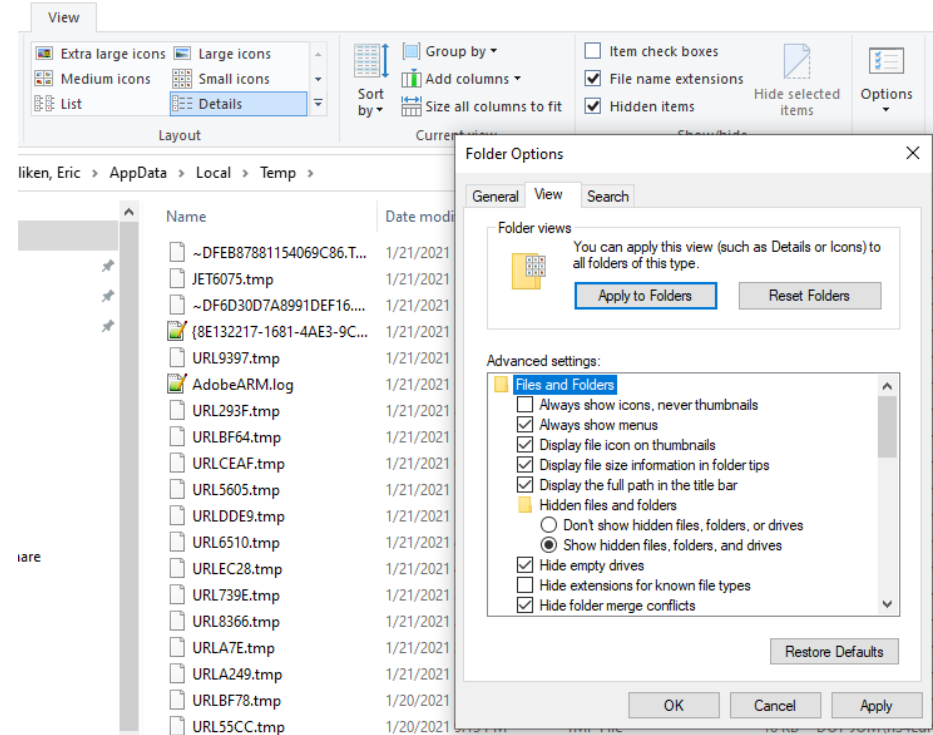
[Return to Index](#)



NHDOT CAD/D Connect Documentation

A-1-4: Windows Explorer - Folder Options

If you cannot see the *AppData* folder you may need to change your Explorer\Folder's view Options. In the *Folder Options View* tab, check the box to **Show hidden files, folders, and drives**. Suggest also unchecking **Hide Extensions for known file types**. Click **Apply**, then click **Apply to Folders**, OK



[Return to Index](#)