

Construction Cost Index

New Hampshire Department of Transportation

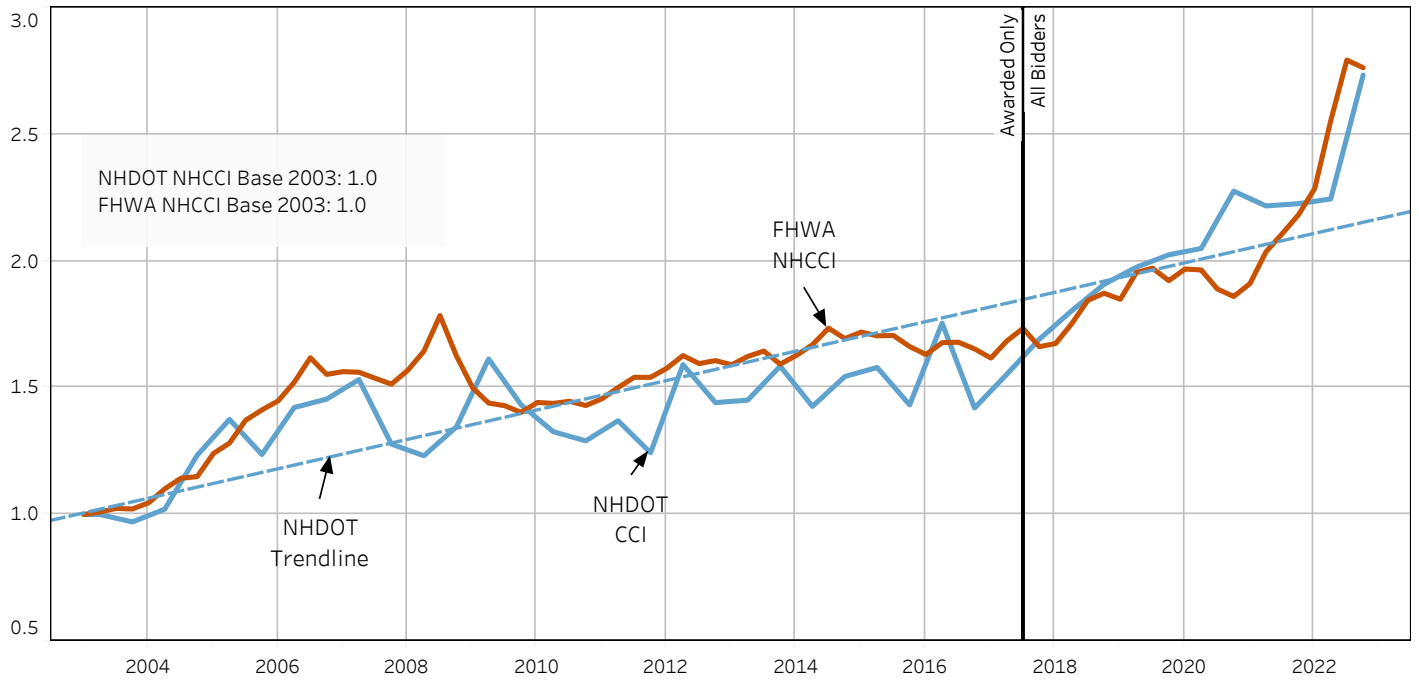


New Hampshire DOT, Bureau of Asset Management Performance Strategies
First Half, 2023



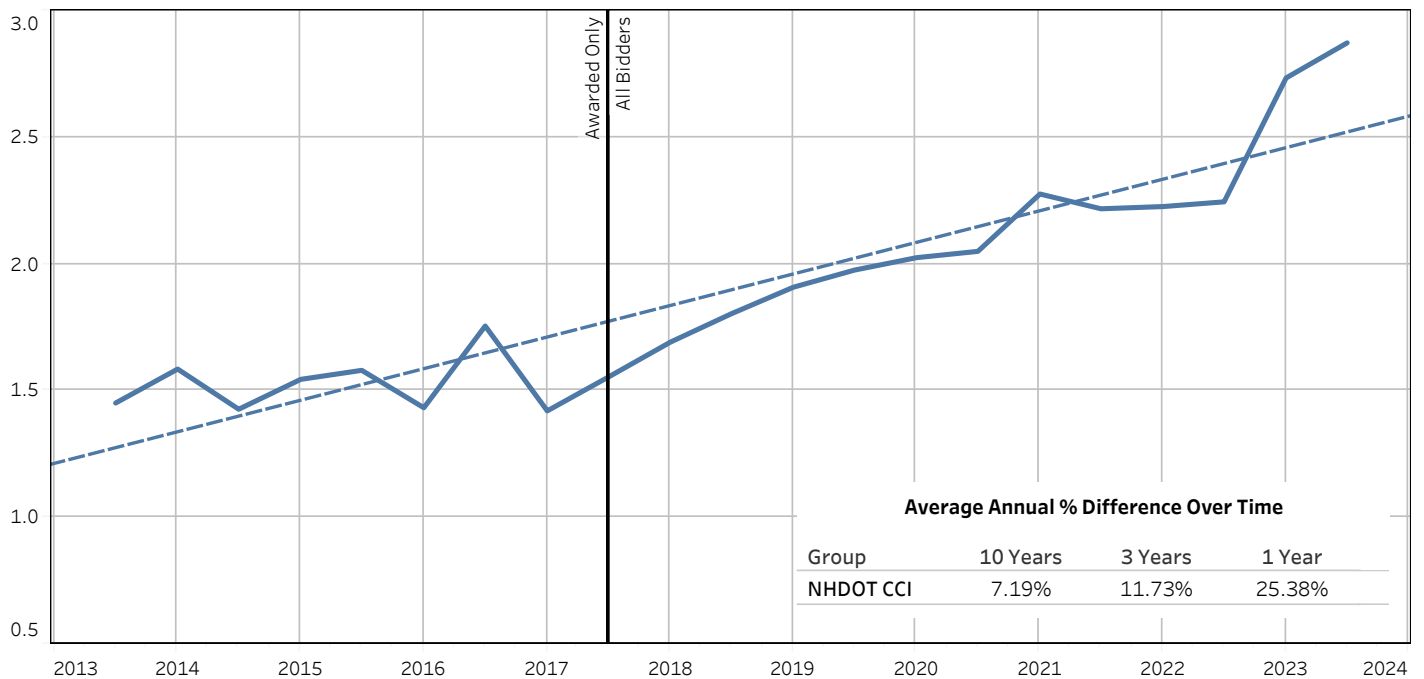
The graph below displays the 6 month average index for the six item groups as displayed on the next page.
 The FHWA NHCCI number for the current period will not be finalized for another 6 months.

NHDOT CCI vs FHWA NHCCI



The graph below displays the NHDOT CCI 10-year trend.

NHDOT CCI Trend Lines

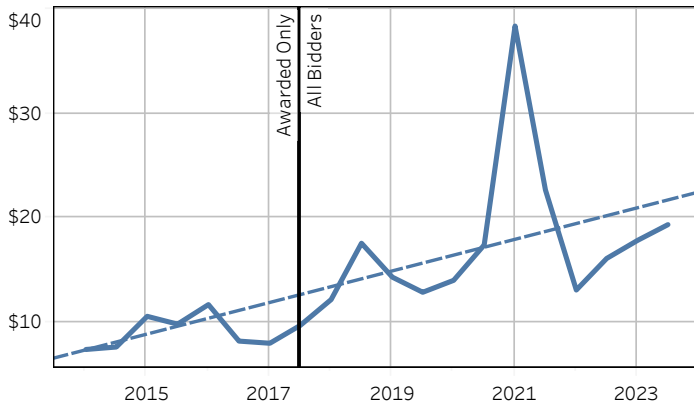


The graphs below display the individual item group 10-year trends for NHDOT based on an average unit price from all items within the item group. The table to the right shows the average annual percentage difference over the time frame listed in the columns.

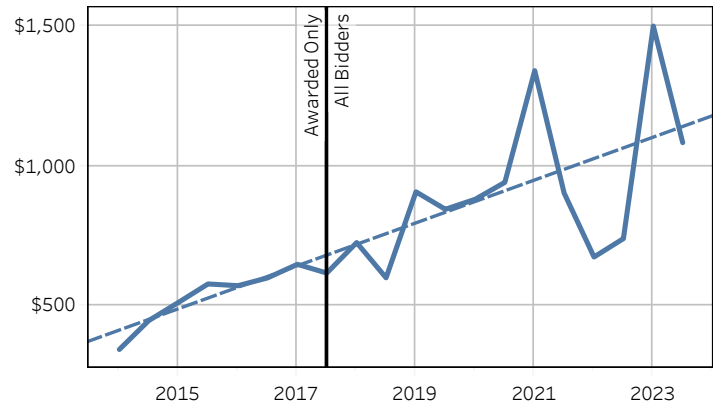
Average Annual % Difference Over Time

Item Group	10 Years	3 Years	1 Year
Roadway Excavation	15%	23%	27%
Select Materials	12%	12%	37%
Hot Mix Asphalt	5%	11%	22%
Structural Concrete	13%	23%	83%
Steel Reinforcing	9%	3%	35%
Structural Steel	18%	42%	75%

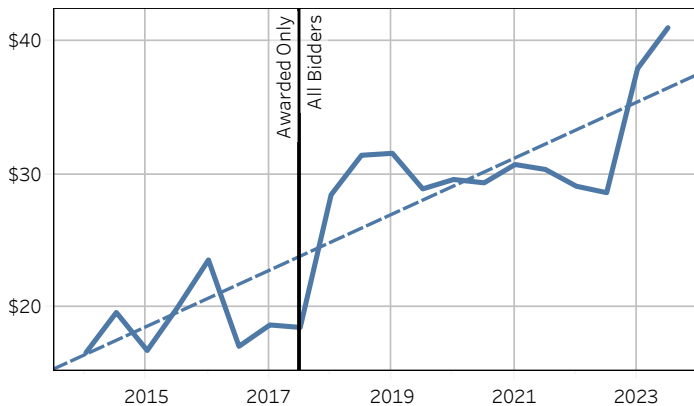
Roadway Excavation AVG Bid Price Trend



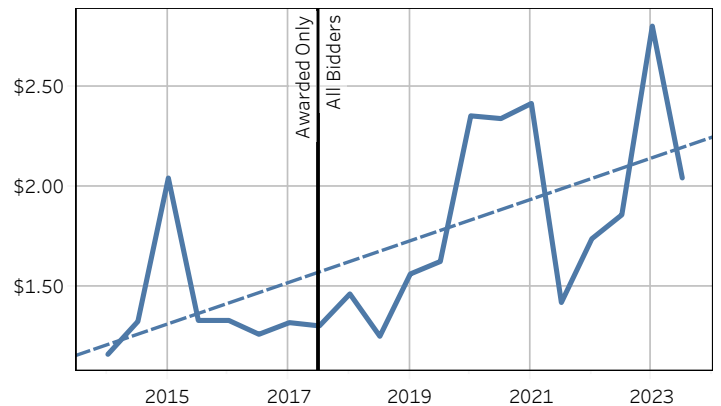
Structural Concrete AVG Bid Price Trend



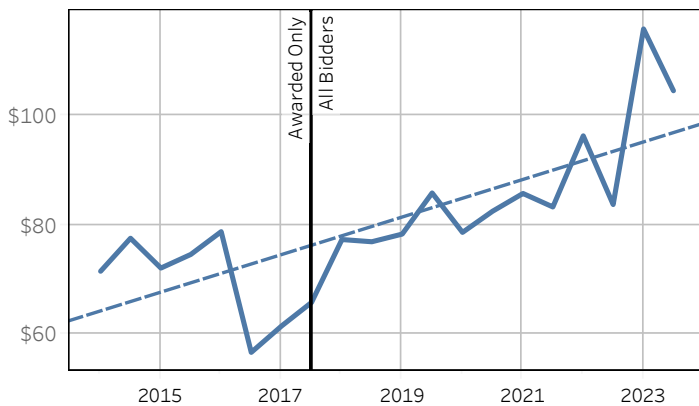
Select Materials AVG Bid Price Trend



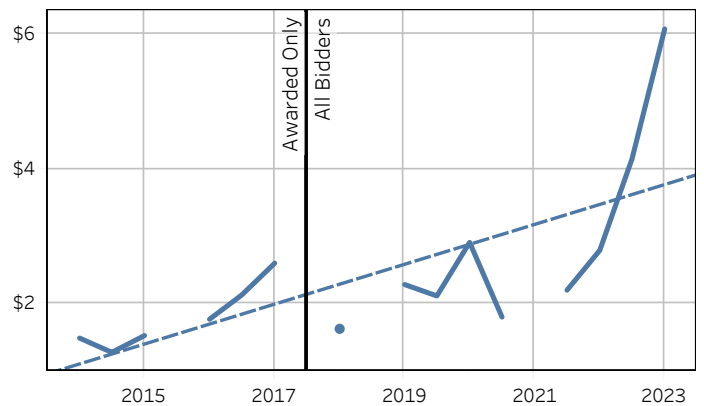
Steel Reinforcing AVG Bid Price Trend



Hot Mix Asphalt AVG Bid Price Trend



Structural Steel AVG Bid Price Trend



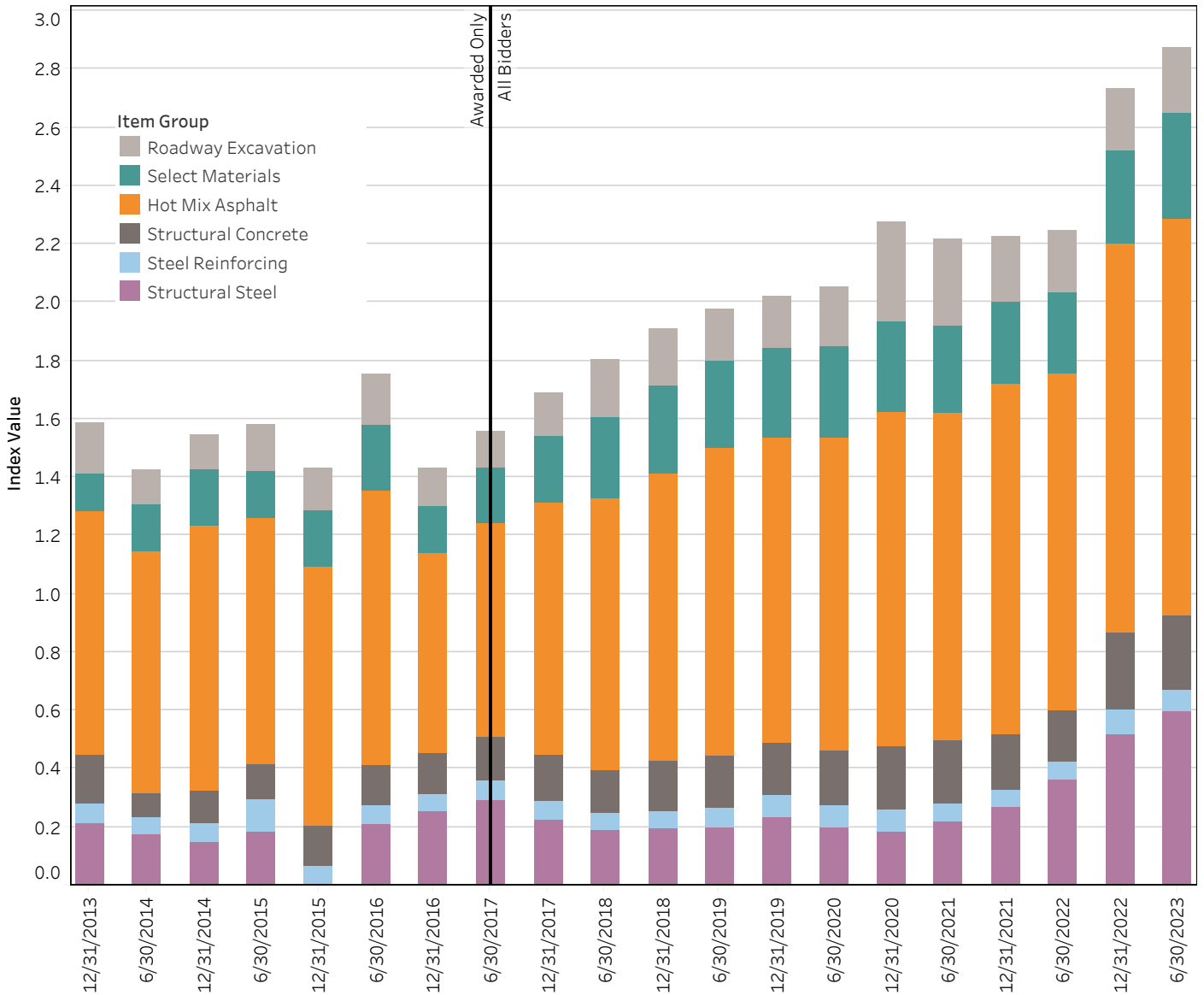
NHCCI Comparison between the first half of 2023 and the second half of 2022

Item Group	Current Value	Previous Value	Difference	Difference %	
NHDOT CCI	2.8722	2.7338	0.1384	5.1%	▲

Item Group AVG Price Comparison between the first half of 2023 and the second half of 2022

Item Group	Current AVG Price	Previous AVG Price	Difference	Difference %	
Roadway Excavation	\$19.35	\$17.85	\$1.51	8.4%	▲
Select Materials	\$41.06	\$37.98	\$3.09	8.1%	▲
Hot Mix Asphalt	\$104.38	\$115.64	(\$11.26)	9.7%	▼
Structural Concrete	\$1,082.48	\$1,498.91	(\$416.43)	27.8%	▼
Steel Reinforcing	\$2.04	\$2.80	(\$0.76)	27.1%	▼
Structural Steel	No Data	\$6.08	No Data	No Data	■

Item Group NHDOT CCI Value Distribution per Year-Period

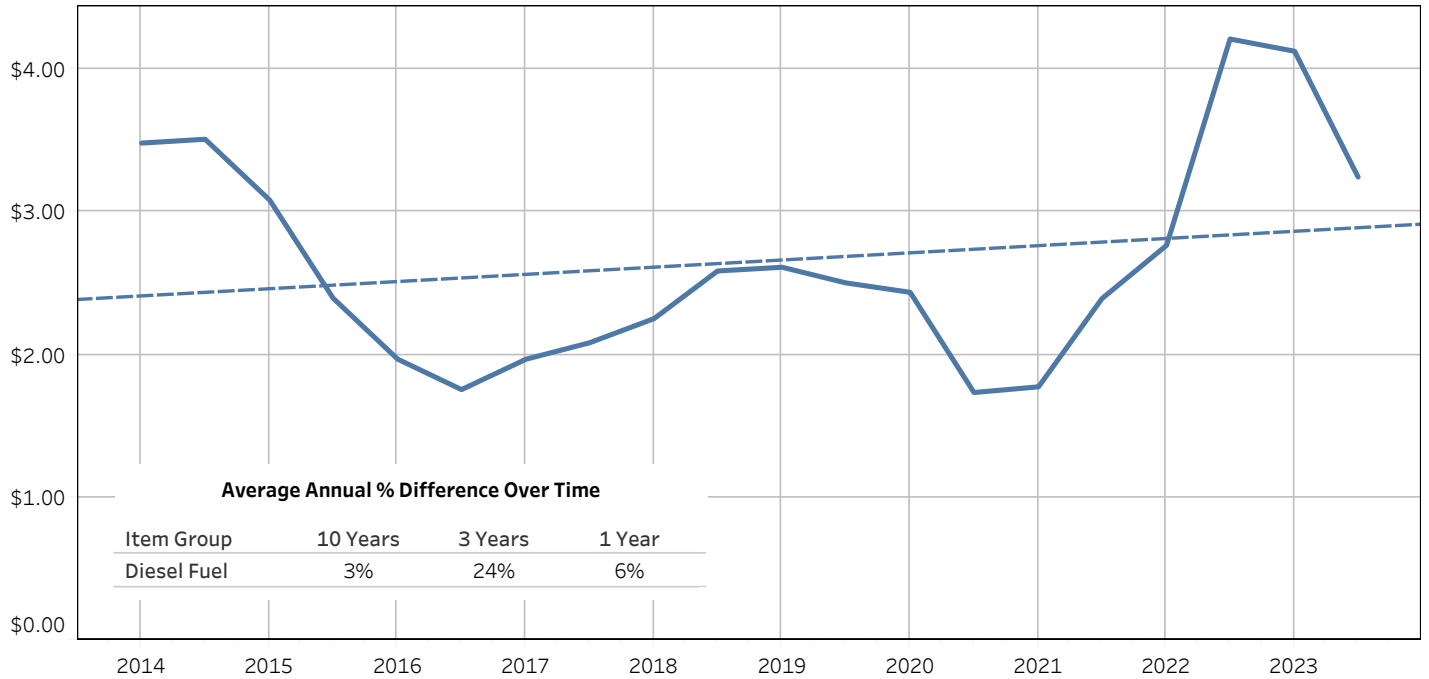


Comparison between the first half of 2023 and the second half of 2022

Item Group	Current Value	Previous Value	Difference	Difference %
Diesel Fuel	\$3.24	\$4.13	(\$0.88)	21.4%
Liquid Asphalt	\$662.50	\$740.83	(\$78.33)	10.6%

NHDOT Fuel & Liquid Asphalt Prices

Diesel Fuel Price per Gallon



Liquid Asphalt Price per Ton

