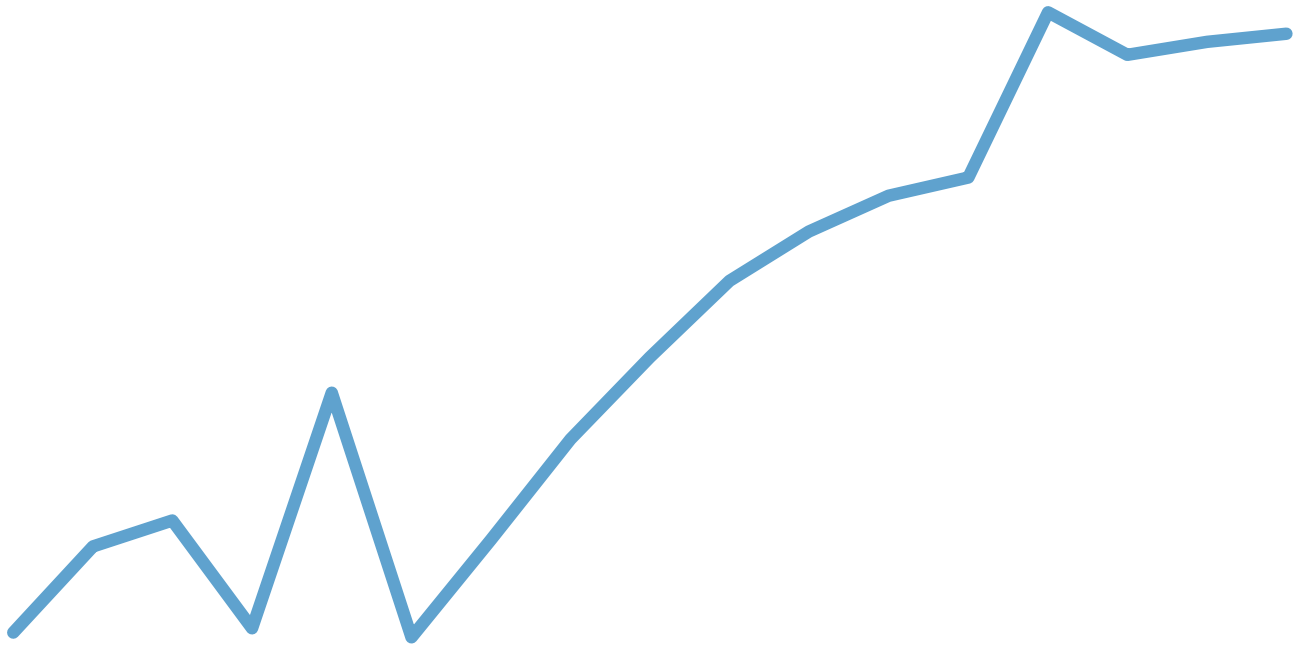


# Construction Cost Index

*New Hampshire Department of Transportation*



---

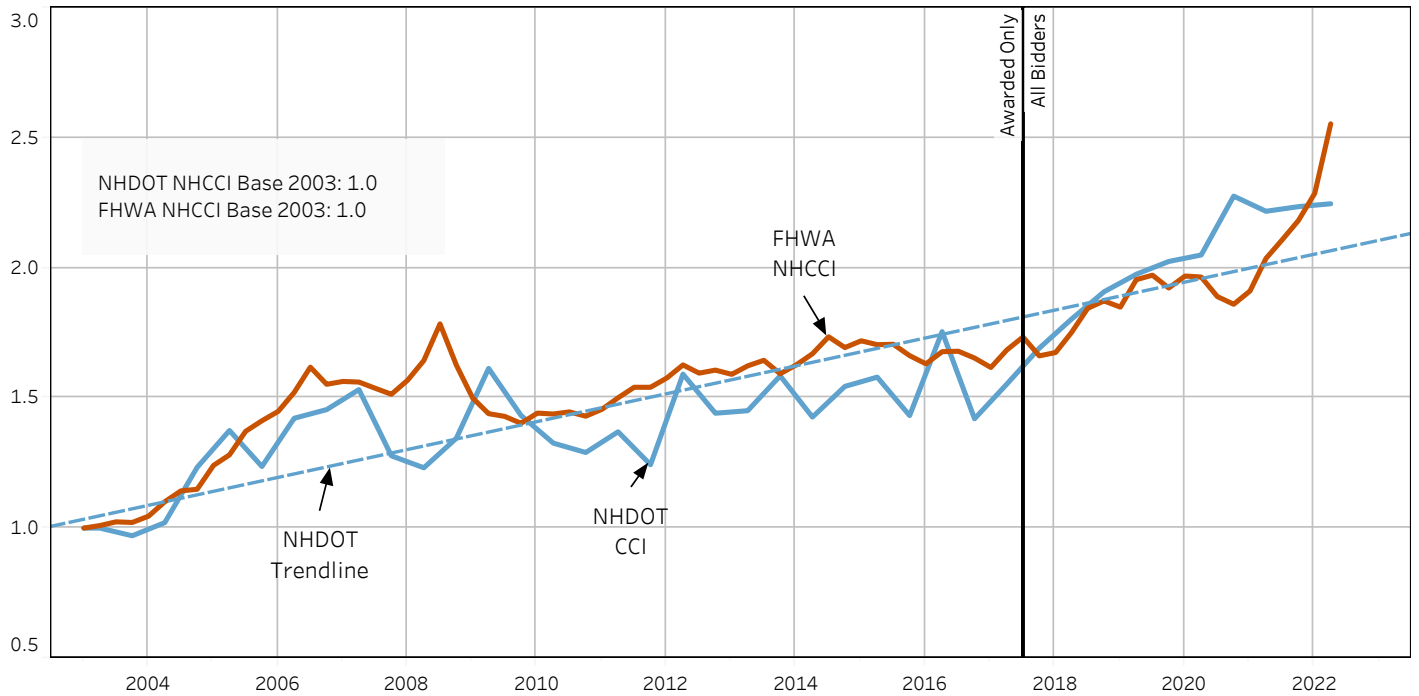
New Hampshire DOT, Bureau of Asset Management Performance Strategies  
Second Half, 2022

---



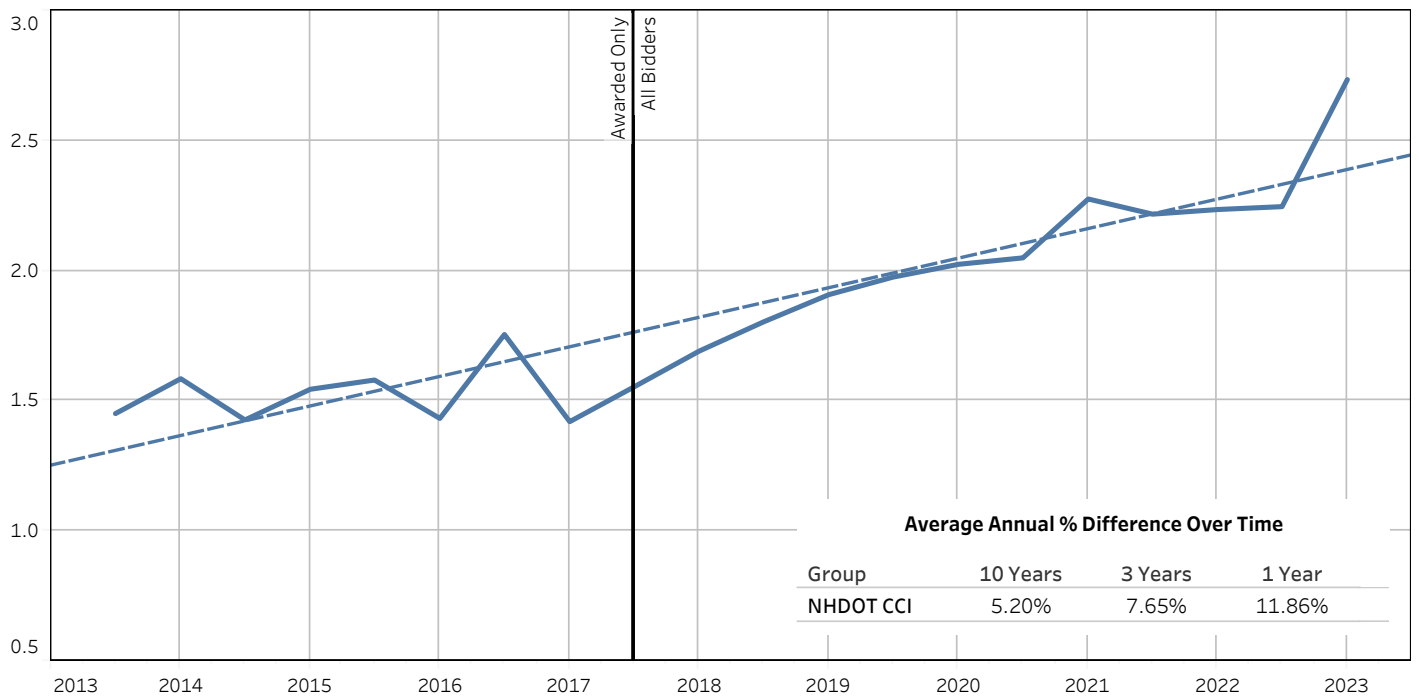
The graph below displays the average index changes every 6 months of the six item groups as displayed below. The FHWA NHCCI number for the current period shall not be finalized for another 6 months.

NHDOT CCI vs FHWA NHCCI



The graph below displays the NHDOT CCI 10-year trend.

NHDOT CCI Trend Lines

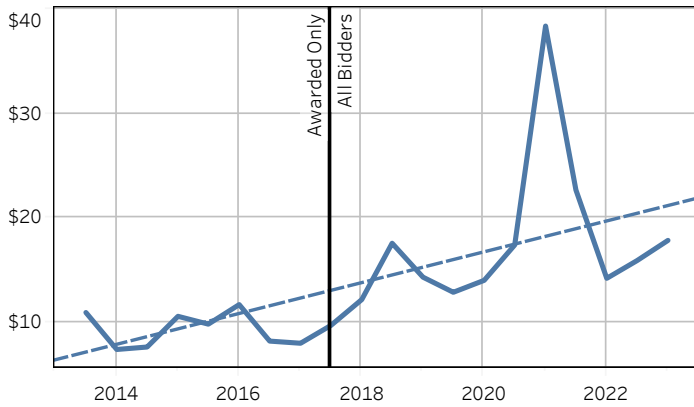


The graphs below display the individual item group 10-year trends for NHDOT based upon an average unit price along all items within the item group. The table to the right shows the average annual percentage difference over the time frame listed in the columns.

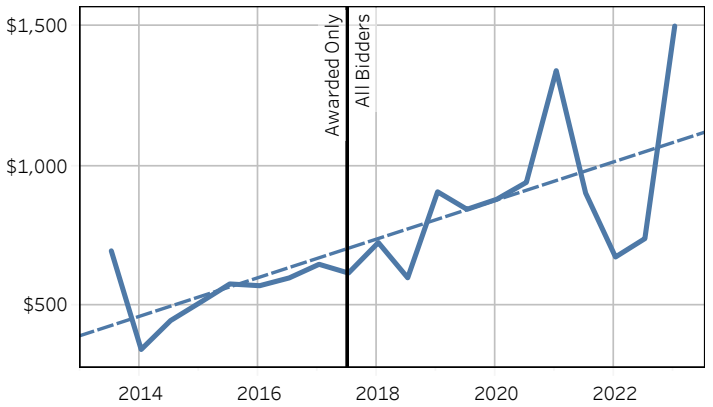
**Average Annual % Difference Over Time**

Item Group	10 Years	3 Years	1 Year
Roadway Excavation	15%	22%	-8%
Select Materials	9%	4%	11%
Hot Mix Asphalt	4%	7%	11%
Structural Concrete	12%	14%	42%
Steel Reinforcing	9%	11%	48%
Structural Steel	17%	38%	105%

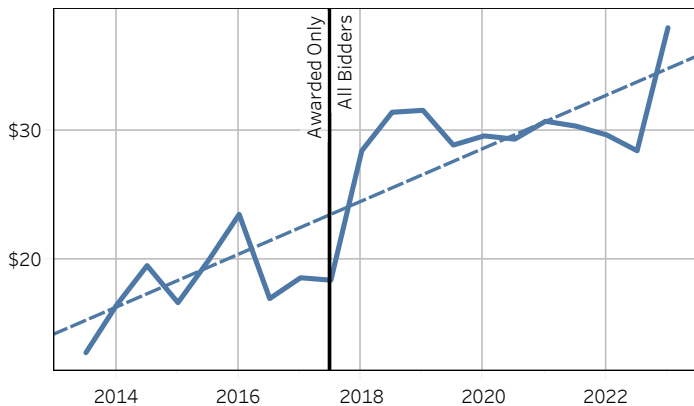
**Roadway Excavation AVG Bid Price Trend**



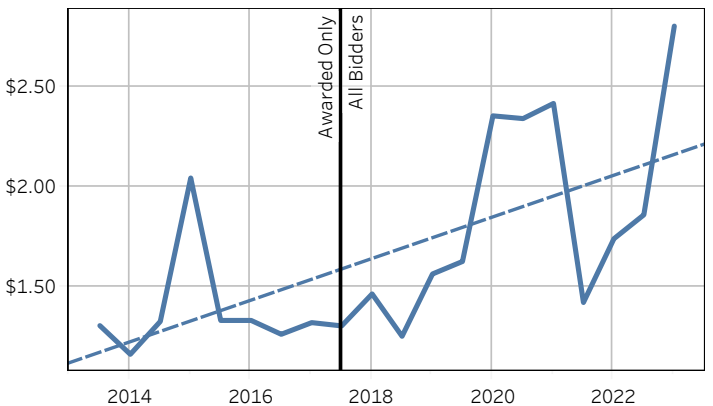
**Structural Concrete AVG Bid Price Trend**



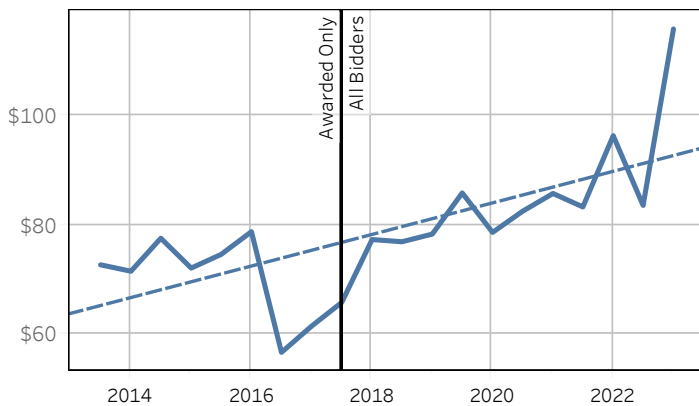
**Select Materials AVG Bid Price Trend**



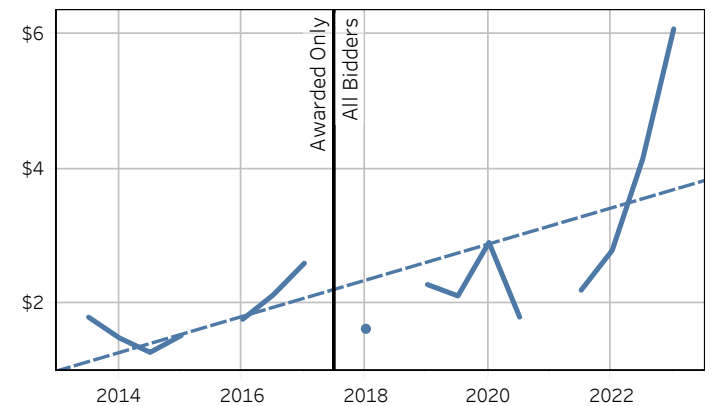
**Steel Reinforcing AVG Bid Price Trend**



**Hot Mix Asphalt AVG Bid Price Trend**



**Structural Steel AVG Bid Price Trend**



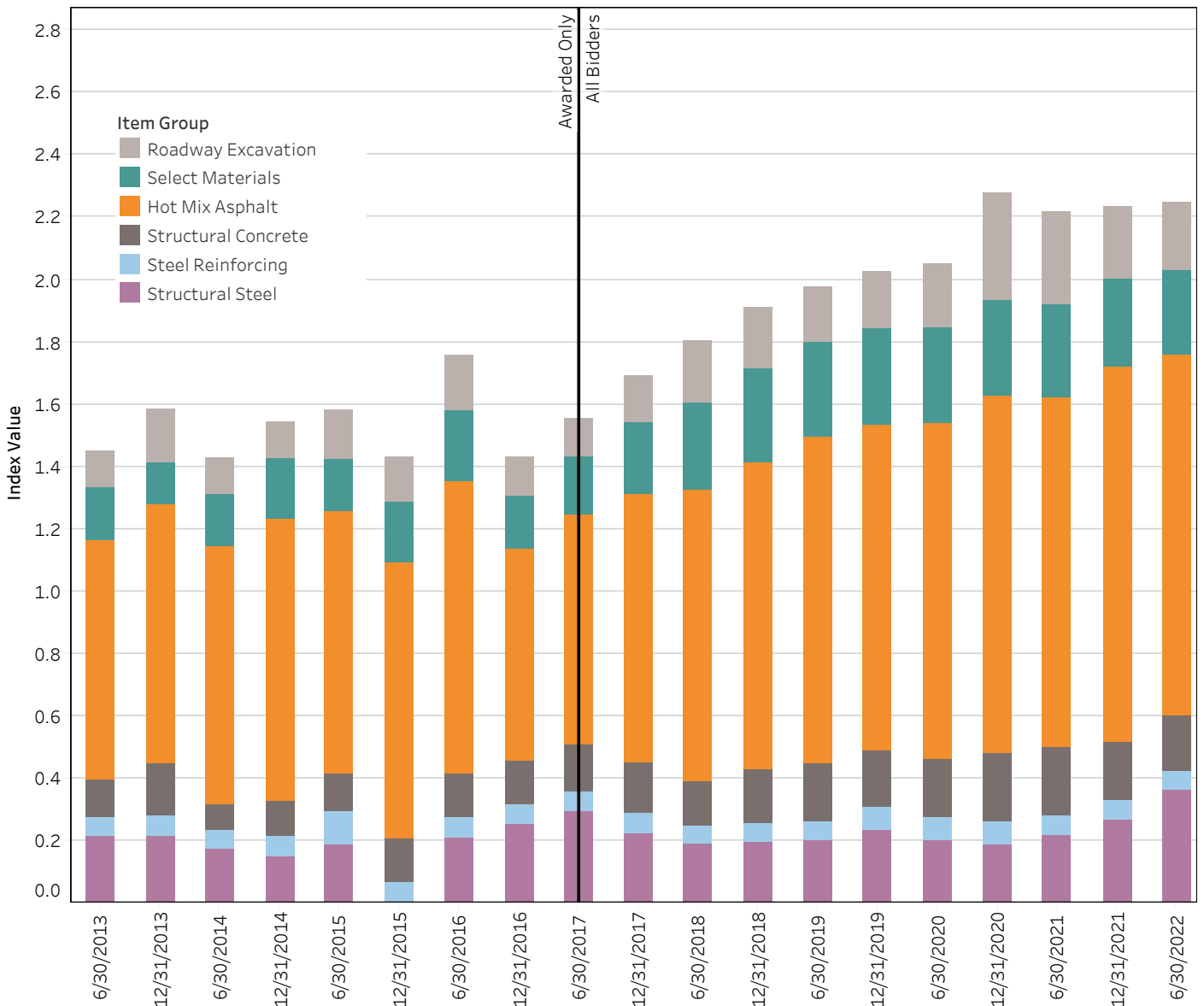
### NHCCI Comparison between the second half of 2022 and the first half of 2022

Item Group	Current Value	Previous Value	Difference	Difference %	
NHDOT CCI	2.7346	2.2464	0.4882	21.7%	▲

### Item Group AVG Price Comparison between the second half of 2022 and the first half of 2022

Item Group	Current AVG Price	Previous AVG Price	Difference	Difference %	
Roadway Excavation	\$17.85	\$15.92	\$1.93	12.1%	▲
Select Materials	\$37.98	\$28.44	\$9.53	33.5%	▲
Hot Mix Asphalt	\$115.64	\$83.49	\$32.15	38.5%	▲
Structural Concrete	\$1,498.91	\$739.85	\$759.07	102.6%	▲
Steel Reinforcing	\$2.80	\$1.86	\$0.94	50.8%	▲
Structural Steel	\$6.08	\$4.15	\$1.93	46.6%	▲

### Item Group NHDOT CCI Value Distribution per Year-Period

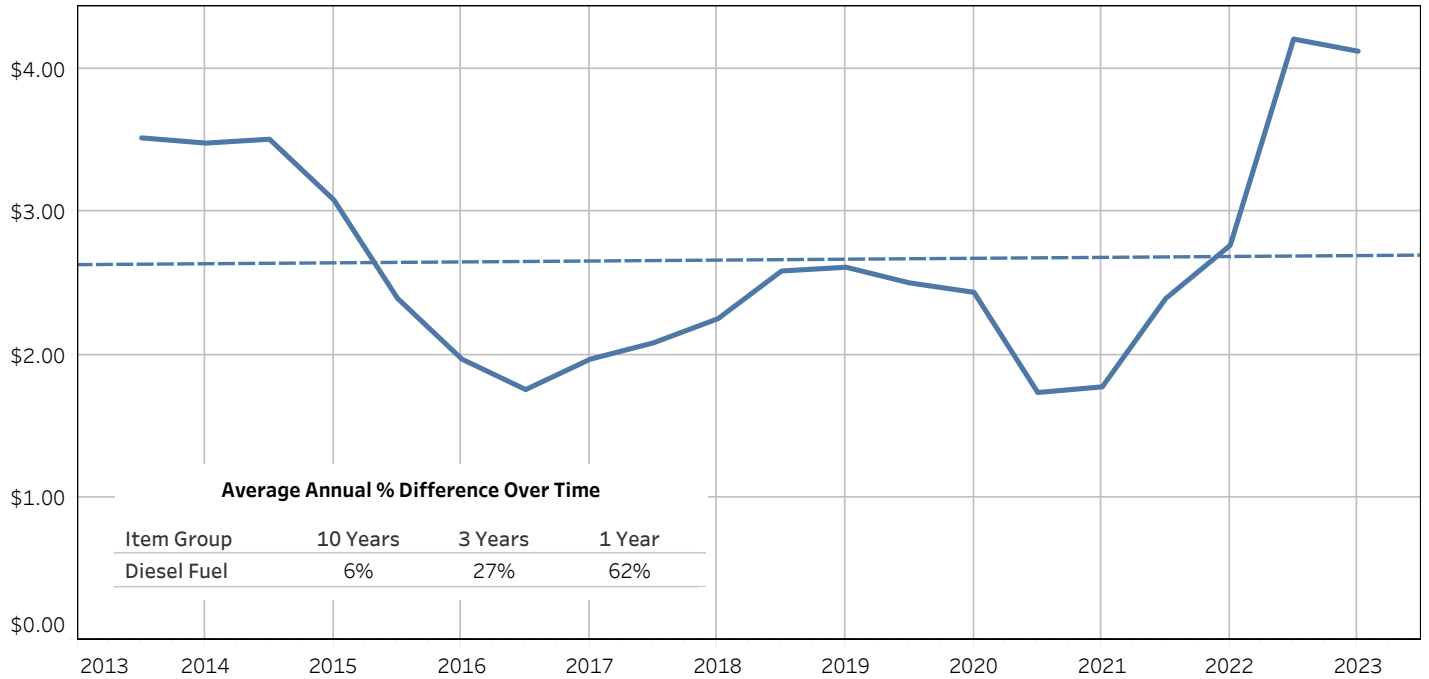


### Comparison between the second half of 2022 and the first half of 2022

Item Group	Current Value	Previous Value	Difference	Difference %	
Diesel Fuel	\$4.13	\$4.21	(\$0.09)	2.0%	▼
Liquid Asphalt	\$740.83	\$694.58	\$46.25	6.7%	▲

### NHDOT Fuel & Liquid Asphalt Prices

#### Diesel Fuel Price per Gallon



#### Liquid Asphalt Price per Ton

