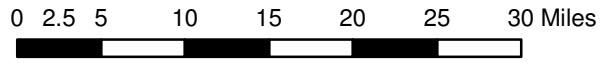


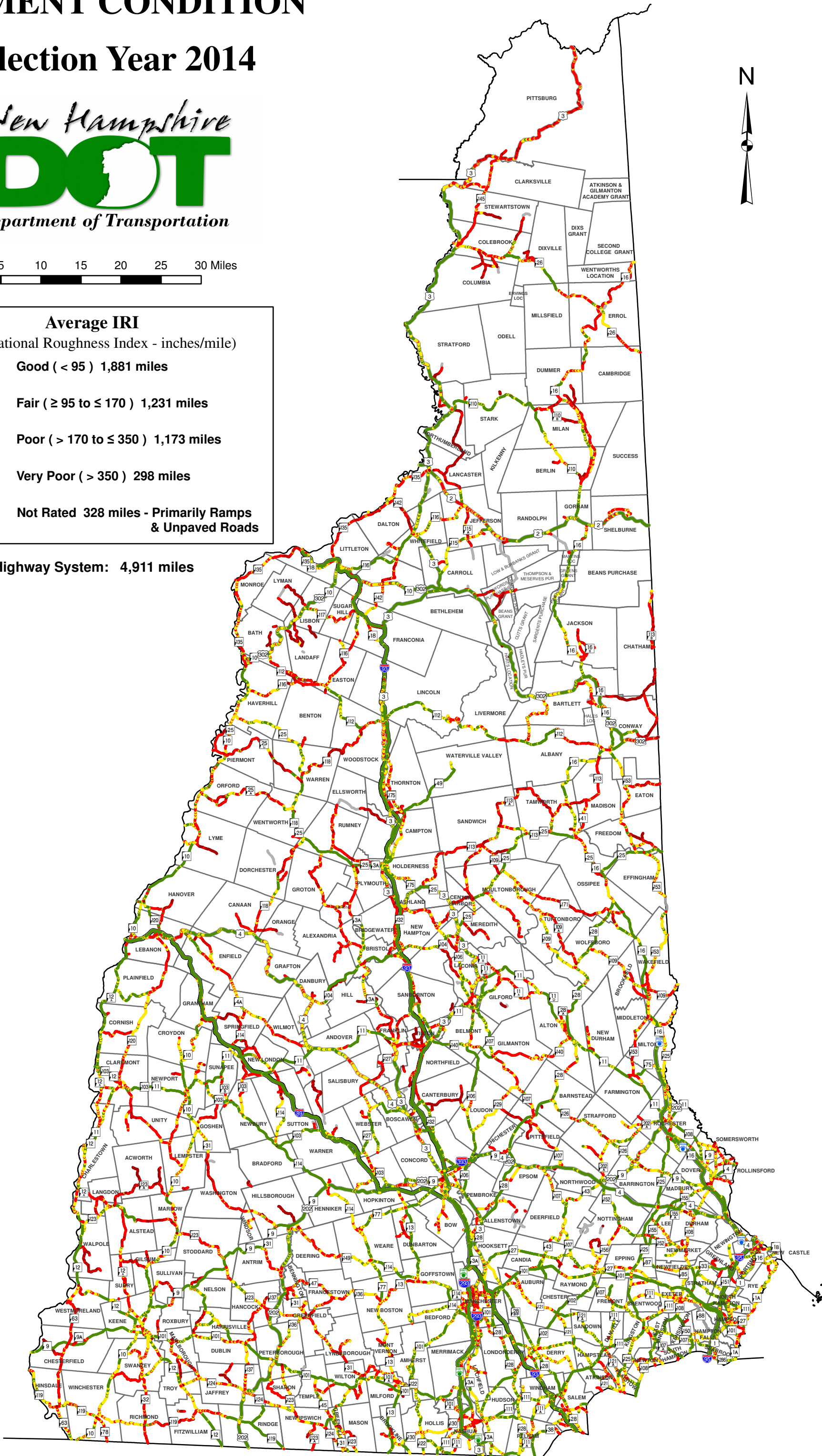
PAVEMENT CONDITION

Collection Year 2014



Average IRI	
(International Roughness Index - inches/mile)	
	Good (< 95) 1,881 miles
	Fair (≥ 95 to ≤ 170) 1,231 miles
	Poor (> 170 to ≤ 350) 1,173 miles
	Very Poor (> 350) 298 miles
	Not Rated 328 miles - Primarily Ramps & Unpaved Roads

Total State Highway System: 4,911 miles



Pavement Condition - Collection Year 2014

Condition	Tier 1		Tier 2		Tier 3		Tier 4		Compact		Statewide	
	Miles	% of Tier	Miles	% of Tier	Miles	% of Tier	Miles	% of Tier	Miles	% of Tier	Miles	% of State
Good (< 95)	583	94%	816	59%	368	26%	66	8%	49	16%	1,881	41%
Fair (≥ 95 to ≤ 170)	32	5%	385	28%	516	36%	175	21%	123	41%	1,231	27%
Poor (> 170 to ≤ 350)	5	1%	167	12%	484	34%	407	48%	109	37%	1,173	26%
Very Poor (> 350)	0	0%	13	1%	66	5%	203	24%	16	5%	298	7%
Not Rated	220		43		10		48		6		327	
Statewide	840	100%	1,424	100%	1,444	100%	900	100%	303	100%	4,911	100%

Notes: Not Rated - Ramps and gravel roads are not collected
 Compact - Highways that are part of the state system, which municipalities maintain
 Miles are barrel miles
 Miles may not sum due to rounding

