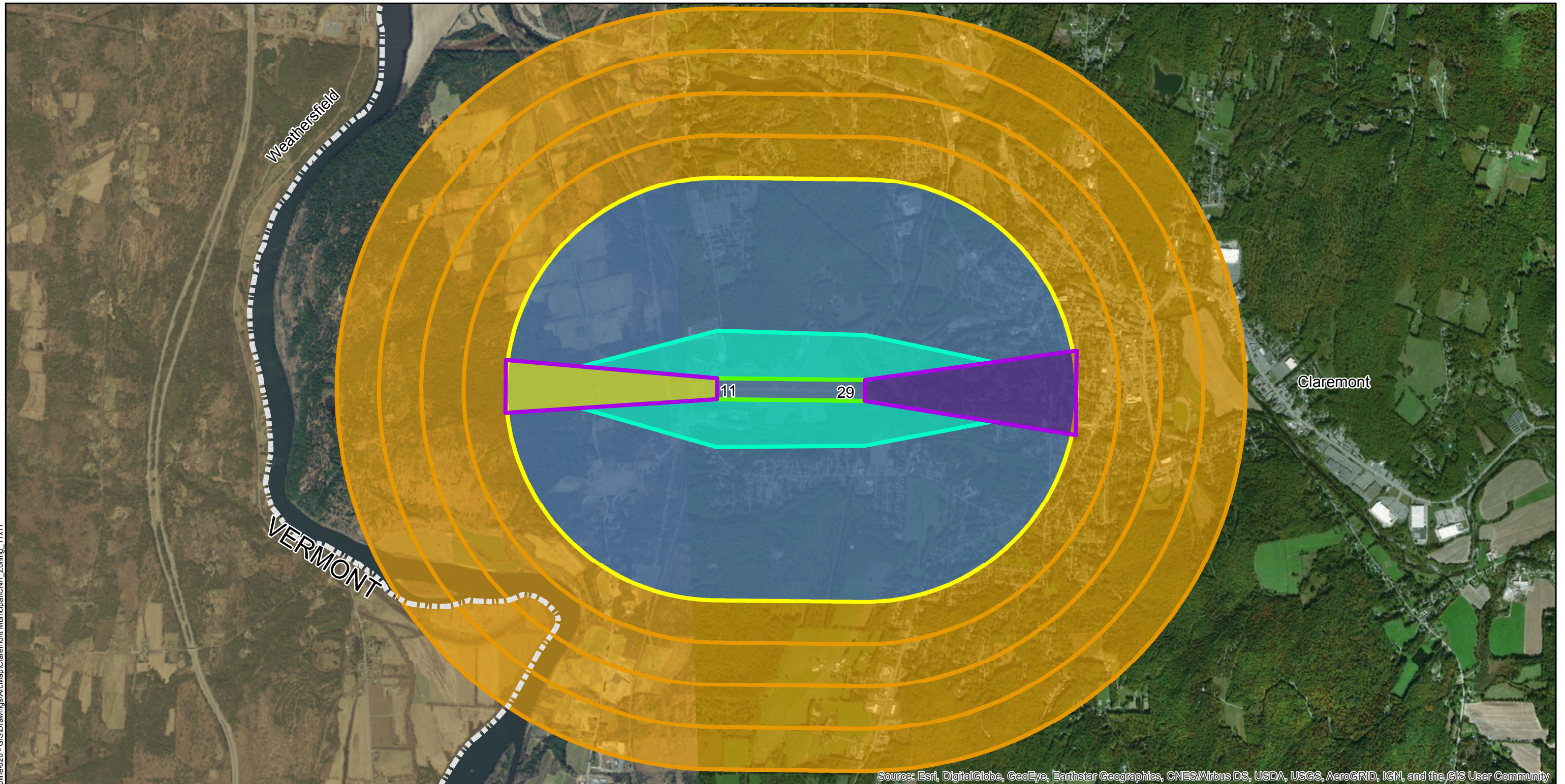


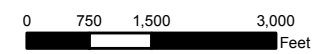
P:\2017\NE279002 - NH\DOT - Approach Plan Study\600 Discipline\620 - GIS\Drawings\AerialMap\Claremont Municipal\CNH_Zoning_11x17



Source: Esri, DigitalGlobe, GeoEye, Earthstar Geographics, CNES/Airbus DS, USDA, USGS, AeroGRID, IGN, and the GIS User Community

NOTE:

1. PLAN PREPARED IN CONFORMANCE WITH NH REV STAT § 424:3 (2015)
2. DRAWN IN ACCORDANCE WITH AC 150/5300-13A, TABLE 3-2 AND PART 77, OBJECTS AFFECTING NAVIGABLE AIRSPACE.
3. RUNWAY 11 IS A VISUAL RUNWAY. RUNWAY 11 DRAWN IN ACCORDANCE WITH CRITERIA DEPICTED IN TABLE 3-2, ROW 2. THRESHOLD SITING SURFACE DRAWN WITH A 20:1 SLOPE.
4. RUNWAY 11 PART 77 APPROACH SURFACE DRAWN WITH A 20:1 SLOPE.
5. RUNWAY 29 IS A RNAV NONPRECISION INSTRUMENT APPROACH AND HAS A VISIBILITY MINIMUM OF 1 1/4 MILE. RUNWAY 29 DRAWN IN ACCORDANCE WITH CRITERIA DEPICTED IN TABLE 3-2, ROW 3. THRESHOLD SITING SURFACE DRAWN WITH A 20:1 SLOPE.
6. RUNWAY 29 PART 77 APPROACH SURFACE DRAWN WITH A 20:1 SLOPE FOR 5,000 FEET.
7. PART 77 TRANSITIONAL SURFACES DRAWN WITH A SLOPE OF 7:1.
8. CONICAL SURFACE DRAWN WITH A SLOPE OF 20:1.
9. PROPOSED STRUCTURES AND OBJECTS OF NATURAL GROWTH 200 FEET OR TALLER AS MEASURED FROM ADJUSTED GROUND ELEVATION REQUIRE NOTIFICATION TO THE FAA. REFER TO 14 C.F.R. § 77.9. FOR ADDITIONAL NOTIFICATION CRITERIA.
10. ALL POLITICAL SUBDIVISIONS OVERLAYED BY AIRSPACE SURFACES SHOULD ADOPT A ZONING ORDINANCE TO RESTRICT THE HEIGHT OF STRUCTURES AND OBJECTS OF NATURAL GROWTH NEAR THE AIRPORT. IMPACTED POLITICAL SUBDIVISIONS INCLUDE THE CITY OF CLAREMONT, NEW HAMPSHIRE AND THE TOWN OF WEATHERSFIELD, VERMONT.
11. GROUND ELEVATION BASED ON USGS DATA.
12. FOR PLANNING PURPOSES ONLY. SURVEY DATA NECESSARY PRIOR TO ANY PROPOSED CONSTRUCTION.



- Legend**
- Part 77 Approach
 - Part 77 Transitional
 - Part 77 Horizontal
 - Part 77 Conical
 - Part 77 Primary
 - Town Boundaries
 - Vermont Political Boundaries
 - Nonprecision Instrument Approach Zone
 - Visual Approach Zone
 - Horizontal Zone
 - Transitional Zone
 - Conical Zone



Claremont Municipal Airport Approach Plan

Claremont, NH

DATE: December 8, 2017

NAME: bbrewster