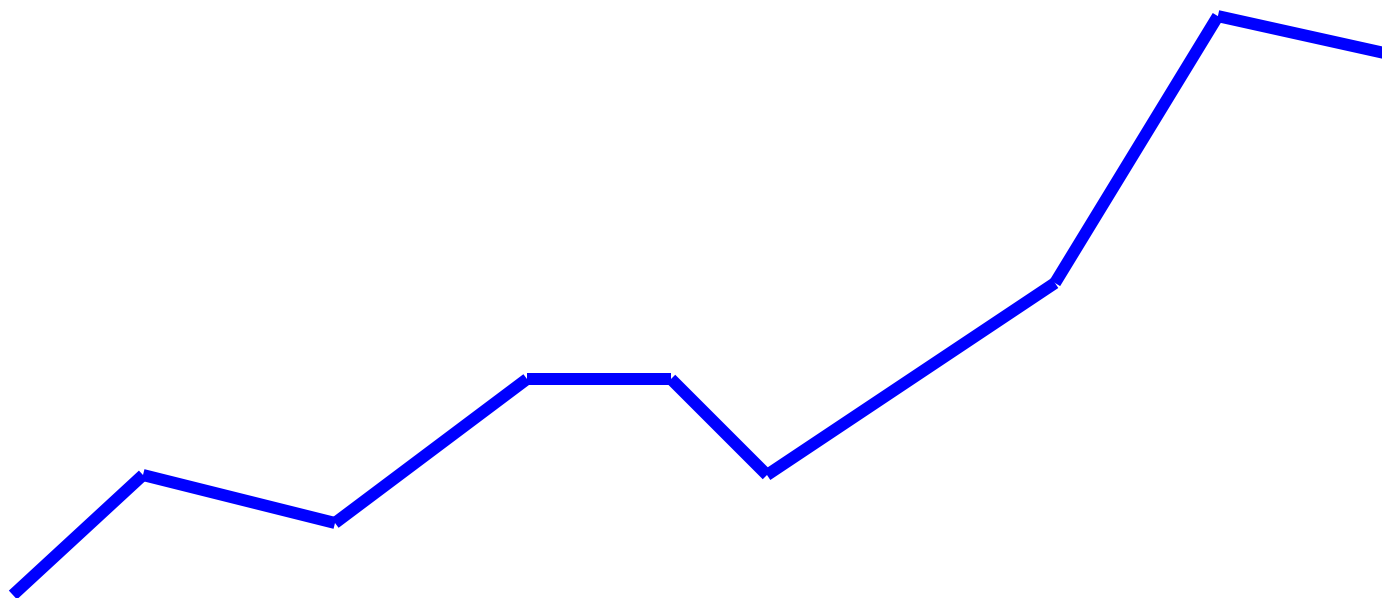


Construction Cost Index

New Hampshire Department of Transportation

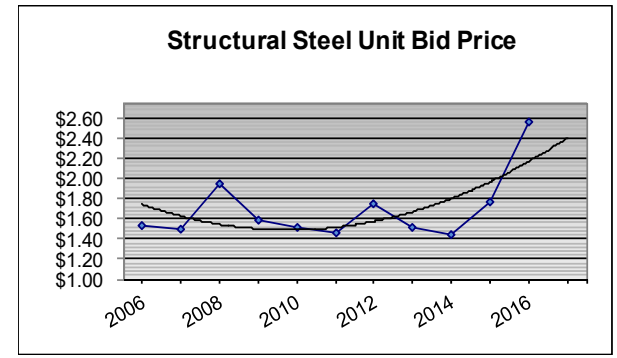
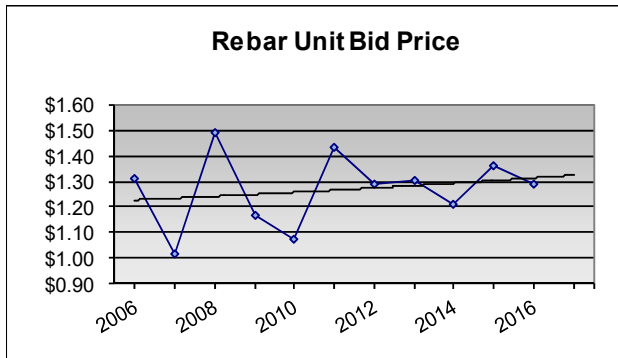
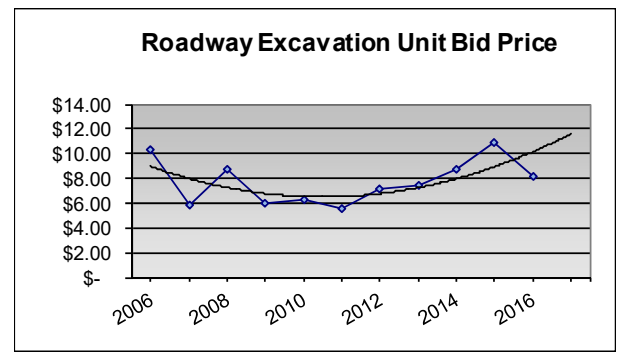
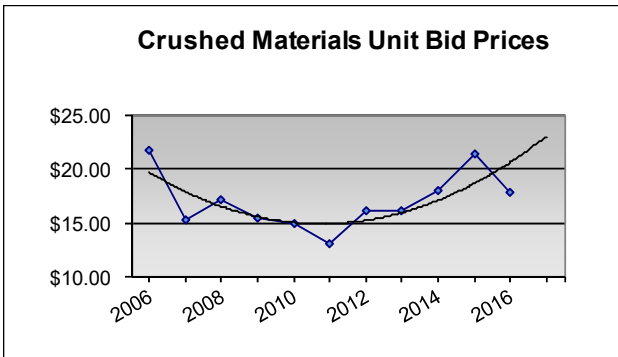
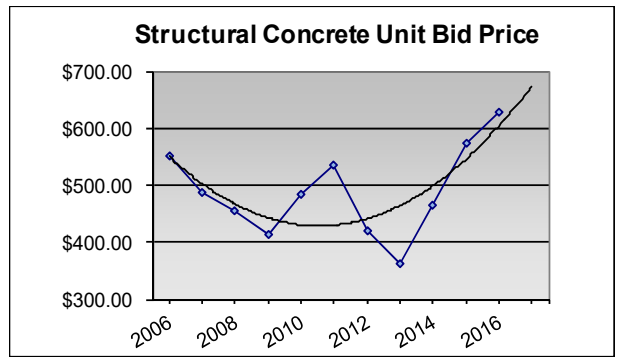
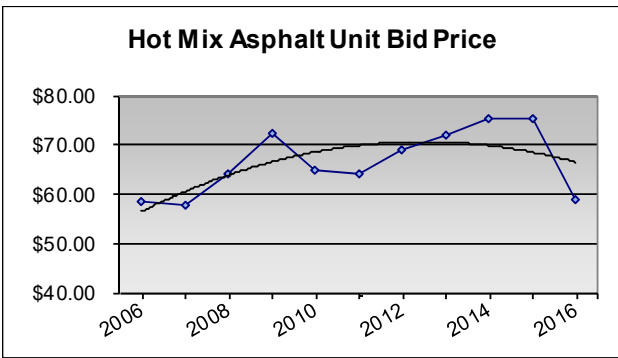
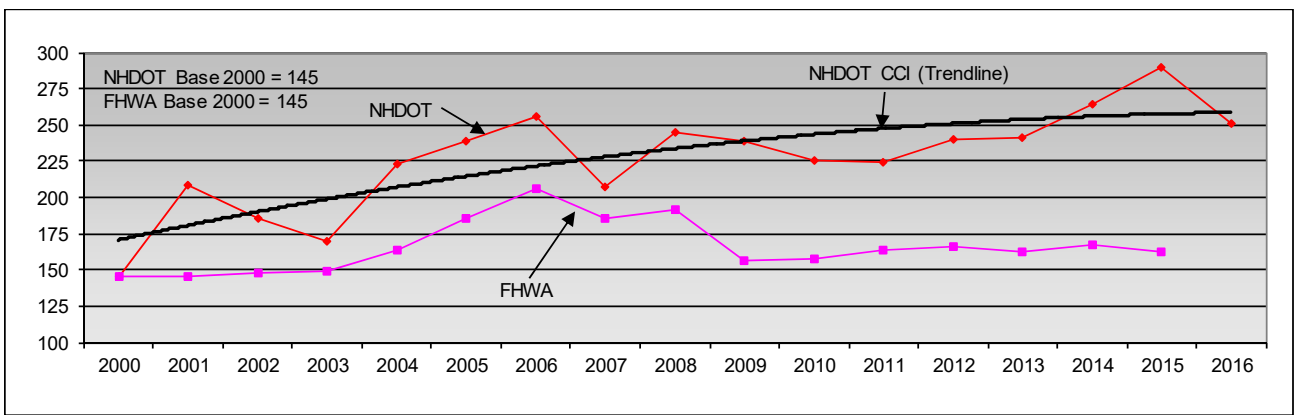


New Hampshire DOT Bureau of Construction
2nd Half, 2016

New Hampshire
DOT

Construction Cost Indices for the 2nd Half of 2016

NHDOT Base 2000 = 145; FHWA Base 2000 = 145

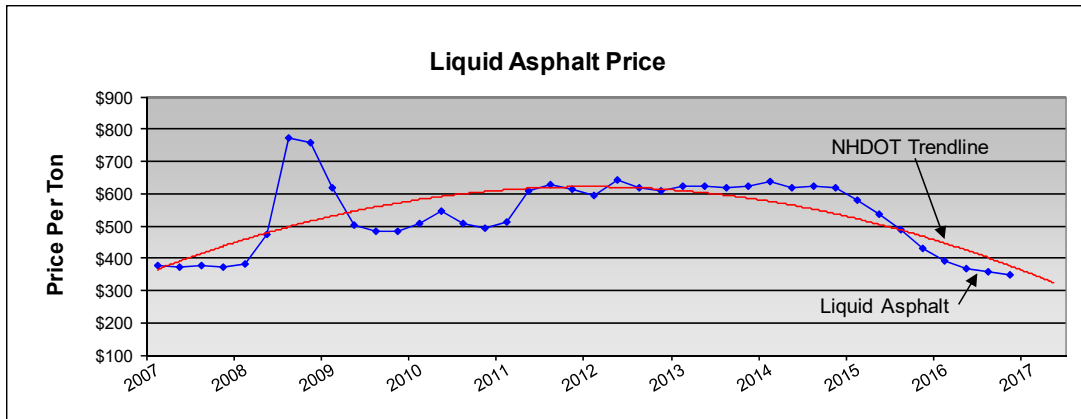
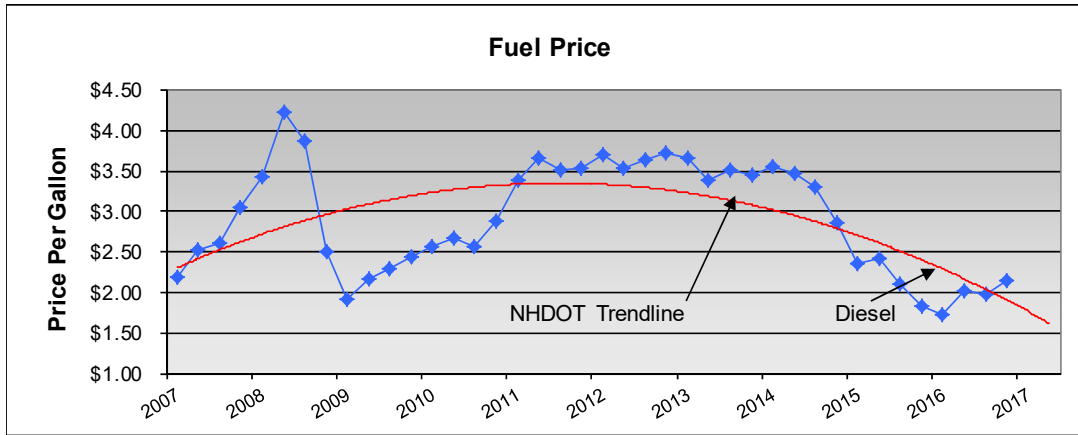


Fuel and Asphalt prices finished the 4th quarter at \$2.15 and \$350.00 respectively. Fuel rose to a price matching the 3rd quarter of 2015 but is up \$0.31 from a year ago. Liquid asphalt is down 22% from the 4th quarter of 2015 and at a price not seen since before 2007. Four of the six material categories tracked finished down at the end of 2016. Crushed Material dropped 17% during 2016. Structural Concrete was up 9.6% in 2016 and continues an upward trend since 2013. Hot Mix Asphalt saw a 22% drop during 2016, its first drop since 2011. Roadway Excavation is down 25.7% to \$8.12 negating a 25% increase in 2015. Structural Steel is up 44.7% at \$2.56 from a year ago and up 77% since its low in 2014.

The following Components (weighted as shown) are used to compute the NHDOT CCI:

Hot Mix	46.4%
Crushed Material	14.9%
Roadway Excavation	13.5%
Steel	11.2%
Concrete	10.0%
ReBar	4.0%

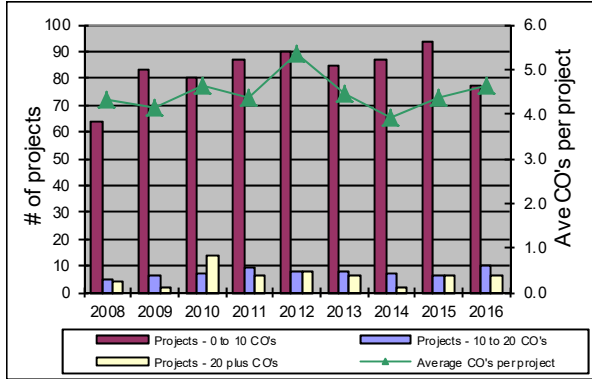
NHDOT Fuel & Liquid Asphalt Prices



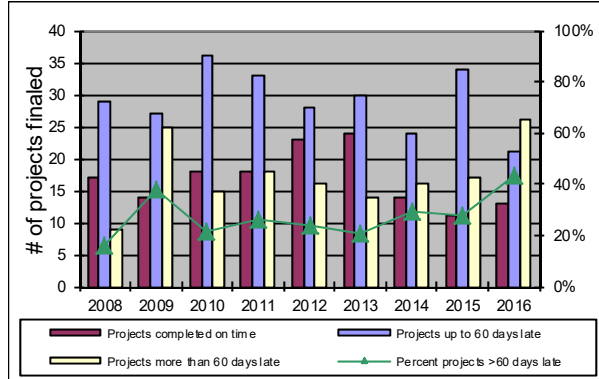
Construction Bureau Performance Measures

Compiled by State Fiscal Year

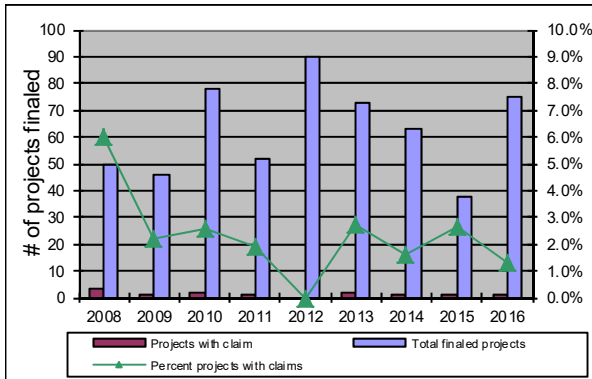
CHANGE ORDERS



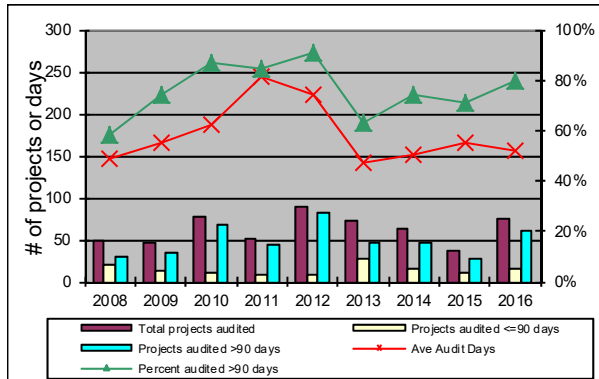
CONTRACT DURATION



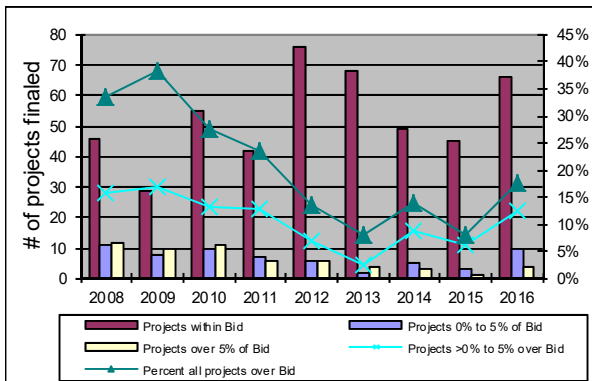
CONTRACTOR CLAIMS



PROJECT AUDIT



BIDS vs. FINAL AMOUNTS



PROJECT ACTIVITY

