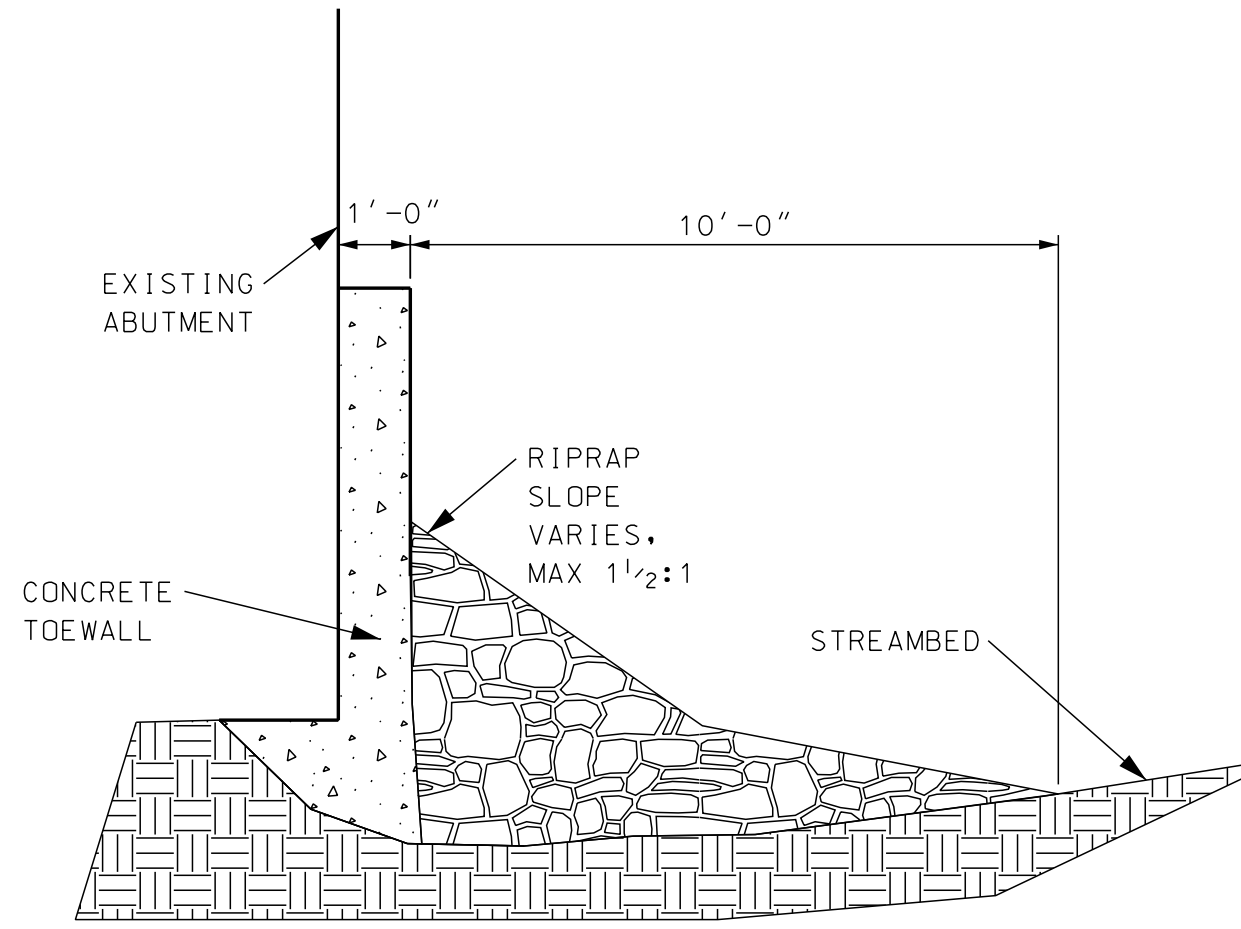


RIPRAP GRADATION  
 D15 < 19"  
 D50 < 24"  
 D100 < 42"



TYPICAL CROSS SECTION  
 NOT TO SCALE

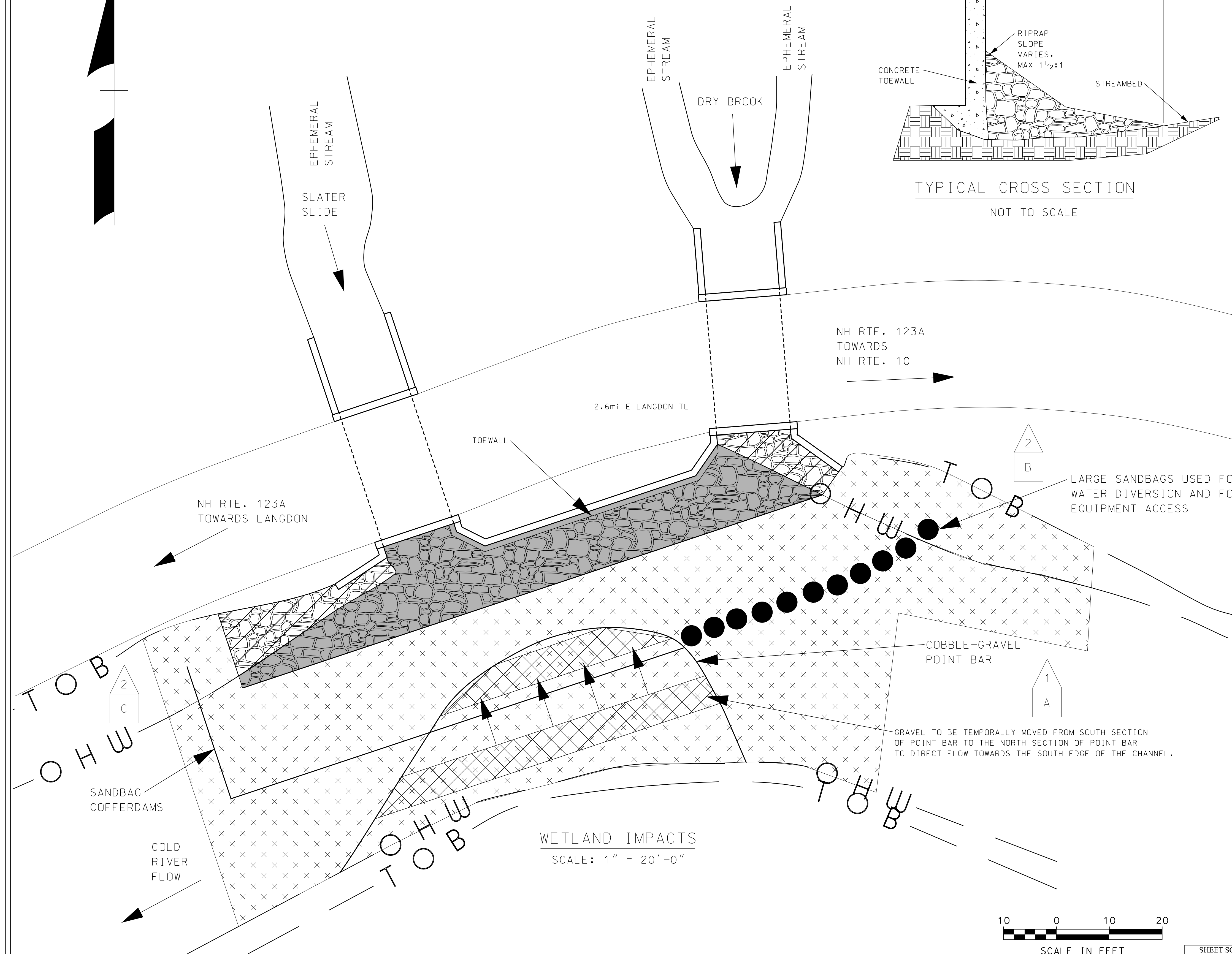
| WETLAND NUMBER | WETLAND CLASSIFICATION | LOCATION | AREA                      |                                  |                   |
|----------------|------------------------|----------|---------------------------|----------------------------------|-------------------|
|                |                        |          | PERMANENT IMPACTS         |                                  | TEMPORARY IMPACTS |
|                |                        |          | N.H.W.B. (NON-WETLAND) SF | N.H.W.B. & A.C.O.E. (WETLAND) SF |                   |
| 1              | R2UB1                  | A        |                           | 1186                             | 6002              |
| 2              | BANK                   | B        | 114                       |                                  | 636               |
| 2              | BANK                   | C        | 222                       |                                  | 217               |
|                |                        | D        |                           |                                  |                   |
|                |                        | E        |                           |                                  |                   |
|                |                        | F        |                           |                                  |                   |
|                |                        | G        |                           |                                  |                   |
|                |                        | H        |                           |                                  |                   |
|                |                        | I        |                           |                                  |                   |

PERMANENT IMPACTS: 1522 SF  
 TEMPORARY IMPACTS: 6855 SF  
 TOTAL IMPACTS: 8377 SF

| WETLAND CLASSIFICATION CODES |   |
|------------------------------|---|
| R2UB1                        | RIVERINE, LOWER PERENNIAL, UNCONSOLIDATED BOTTOM, COBBLE GRAVEL |
| BANK                         |   |

LEGEND

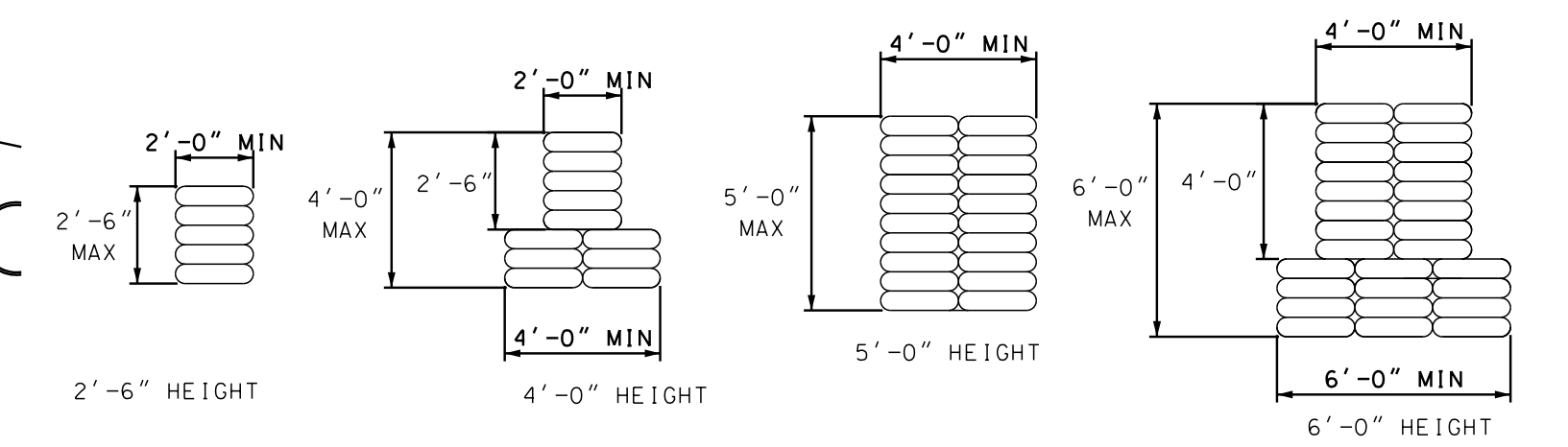
| TYPE OF WETLAND IMPACT   | SHADING/HATCHING  | SYMBOL | DESCRIPTION                |
|--|-------------------|--------|----------------------------|
| NEW HAMPSHIRE WETLANDS BUREAU (PERMANENT NON-WETLAND)                      | Diagonal hatching | #      | WETLAND DESIGNATION NUMBER |
| NEW HAMPSHIRE WETLANDS BUREAU & ARMY CORP OF ENGINEERS (PERMANENT WETLAND) | Solid grey        | #      | WETLAND IMPACT LOCATION    |
| TEMPORARY IMPACTS  | Grid pattern      | #      | WETLAND MITIGATION AREA    |
|  | White box         |        | MITIGATION                 |



LARGE SANDBAGS USED FOR WATER DIVERSION AND FOR EQUIPMENT ACCESS

COBBLE-GRAVEL POINT BAR

GRAVEL TO BE TEMPORALLY MOVED FROM SOUTH SECTION OF POINT BAR TO THE NORTH SECTION OF POINT BAR TO DIRECT FLOW TOWARDS THE SOUTH EDGE OF THE CHANNEL.

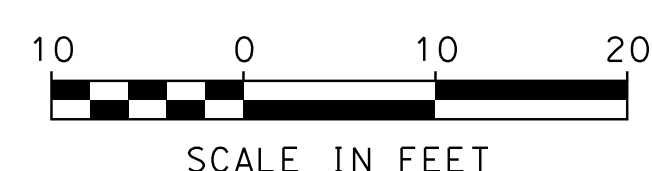


COFFERDAM DETAILS

NOT TO SCALE

WETLANDS DELINEATED BY M. URBAN ON 11/2015

WETLAND IMPACTS  
 SCALE: 1" = 20'-0"



SHEET SCALE AS NOTED

| STATE OF NEW HAMPSHIRE                                      |         |             |                   |               |         |           |   |                             |  |
|---|---------|-------------|-------------------|---------------|---------|-----------|---|-----------------------------|--|
| DEPARTMENT OF TRANSPORTATION * BUREAU OF BRIDGE MAINTENANCE |         |             |                   |               |         |           |   |                             |  |
| TOWN  | ACWORTH | BRIDGE NO.  | 104/063 & 105/064 | STATE PROJECT | 40750   |           |   |                             |  |
| LOCATION NH RTE. 123A OVER SLATER SLIDE AND DRY BROOK       |         |             |                   |               |         |           |   |                             |  |
| WETLAND IMPACTS   |         |             |                   |               |         |           |   | BRIDGE SHEET                |  |
| REVISIONS AFTER PROPOSAL                                    |         | DESIGNED    | ANW               | 10/19/15      | CHECKED |           |   | 1 OF 1                      |  |
|   |         | DRAWN       | ANW               | 10/19/15      | CHECKED |           |   | FILE NUMBER ACWORTH 104/063 |  |
|   |         | QUANTITIES  | CHECKED           |               |         |           |   | TOTAL SHEETS 1              |  |
| ISSUE DATE  |         | FISCAL YEAR | 2016              | CREW          | 07      | SHEET NO. | 1 |                             |  |
| REV. DATE   |         |             |                   |               |         |           |   |                             |  |