

**NOTE: DETAILS AND NOTES MAY NOT BE CURRENT. CLOSELY REVIEW BEFORE USING DETAILS.**

ELEVATIONS SHOWN ARE FROM EXISTING PLANS AND SHOULD BE FIELD VERIFIED.

**PLAN VIEW**  
SCALE: 3/8" = 1'-0"

**REVISIONS 12/30/20**

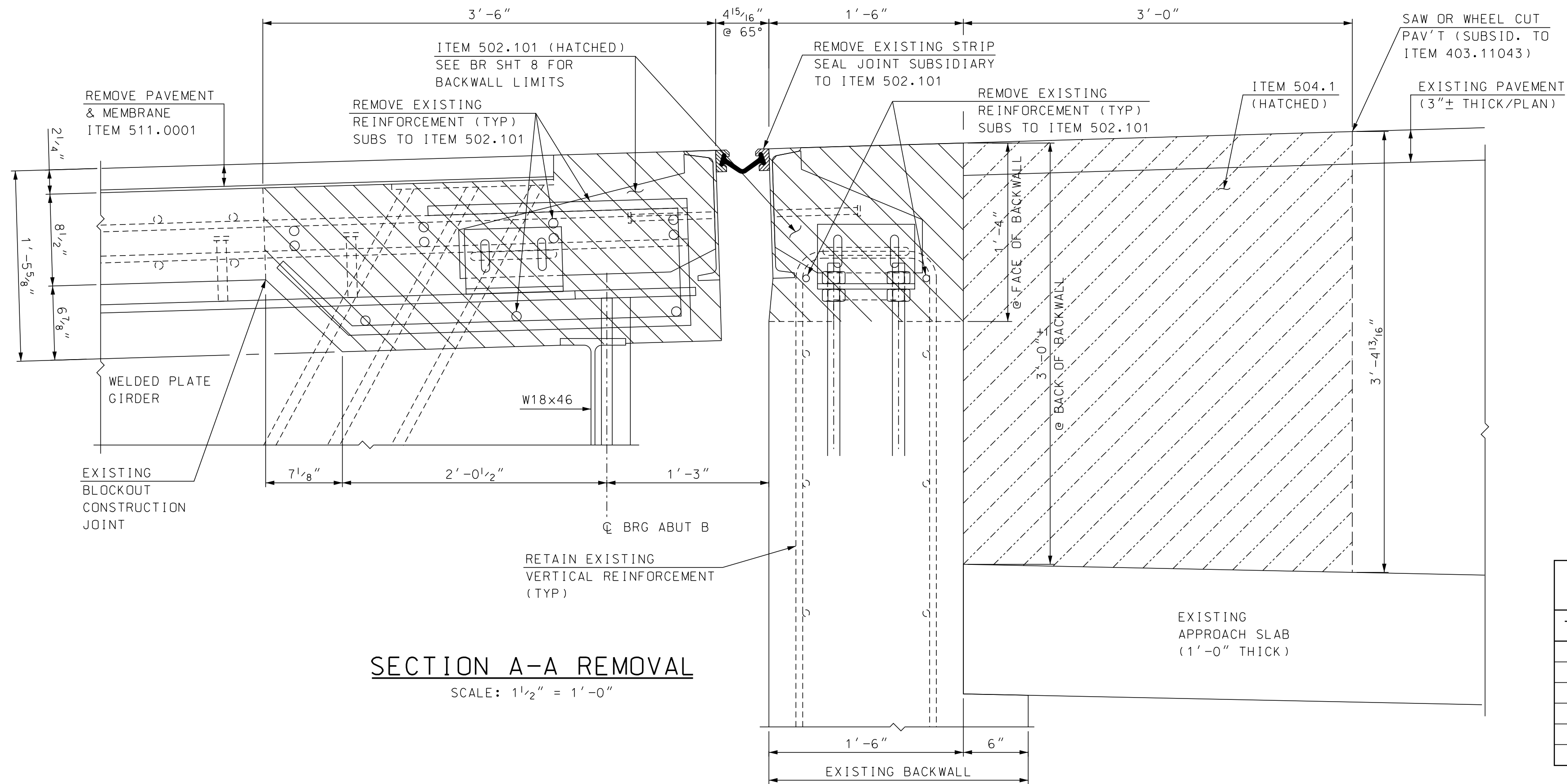
**SAMPLE PLAN**  
DATE: 9-2020

NOTE:  
ALL ELEVATIONS AT THE FACE OF BACKWALL ARE 3/8" HIGHER THAN EXISTING 1982 PLANS (1/2" RAISE FROM MAINTENANCE WORK, 1/8" REDUCTION AT EXPANSION JOINT).  
FOR SECTION A-A SEE BRIDGE SHEET 16.

STATE OF NEW HAMPSHIRE DEPARTMENT OF TRANSPORTATION * BUREAU OF BRIDGE DESIGN									
TOWN BETHLEHEM		BRIDGE NO. 125/177		STATE PROJECT 42501					
LOCATION US ROUTE 302 & NH ROUTE 10 over AMMONOOSUC RIVER									
<b>ABUT B STRIP SEAL EXP JT BR NO 125/177(1 OF 4)</b>									
REVISIONS AFTER PROPOSAL		BY	DATE	CHECKED	BY	DATE	BRIDGE SHEET		
		JEH	2/20	ABH	ABH	7/20	15 OF 34		
		SMG/GMC	2/20	ABH	ABH	7/20	FILE NUMBER		
		JEH	8/20	PML	PML	8/20	136-4-1		
ISSUE DATE		FEDERAL PROJECT NO.		SHEET NO.		TOTAL SHEETS			
REV. DATE		-----		19		38			

SUBDIRECTORY	DGN LOCATOR	SHEET SCALE
BRC/BETHLEHEM	125-177 exp jt B	AS NOTED

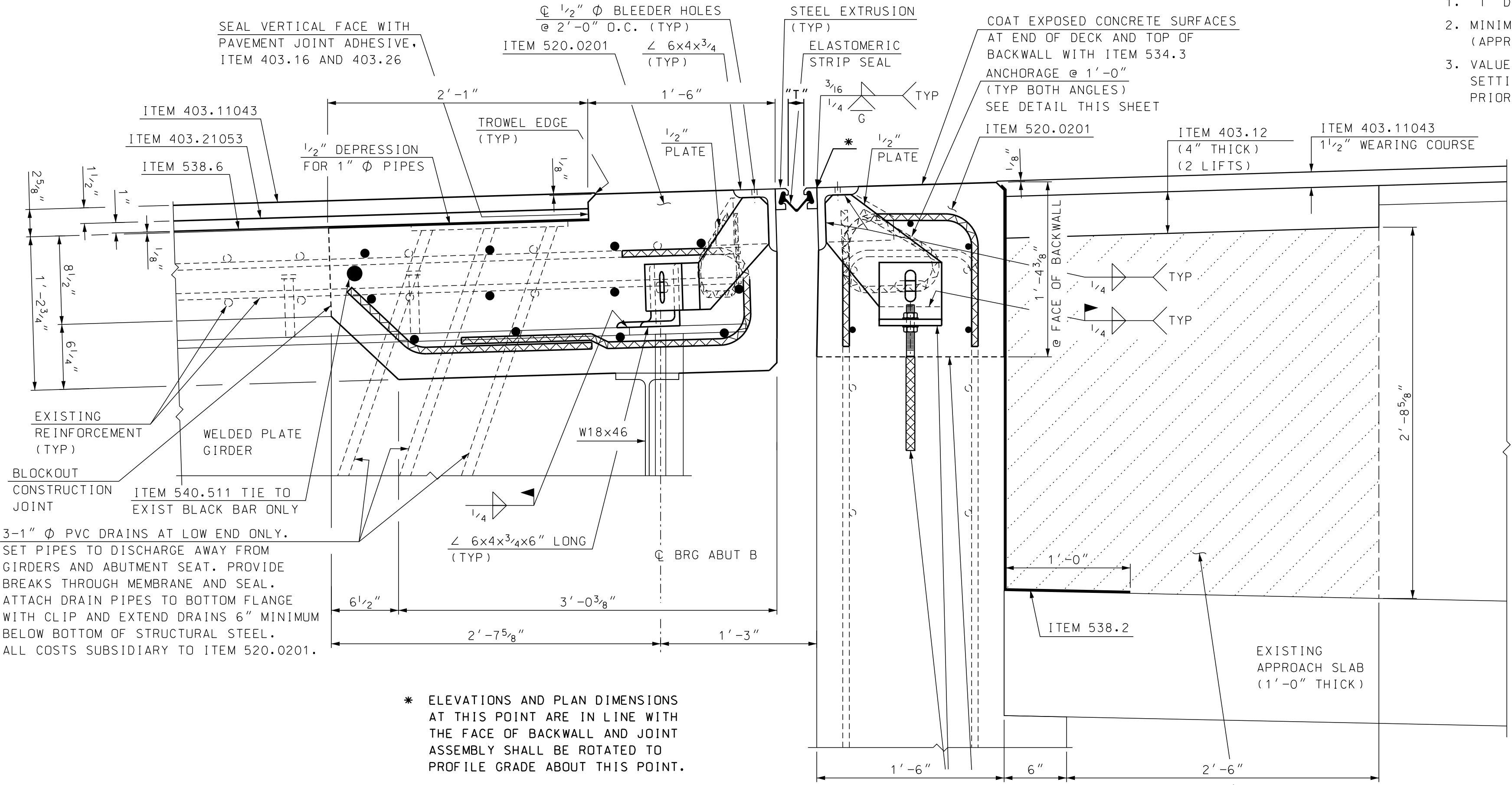
PROFILE GRADE (LOOKING UPSTATION) -1.06% →  
 GRADE PERPENDICULAR TO BACKWALL +2.94% →



**SECTION A-A REMOVAL**  
 SCALE: 1/2" = 1'-0"

TEMPERATURE ADJUSTMENT TABLE	
TEMPERATURE	"T"
20°F	1 11/16"
35°F	1 5/8"
50°F	1 9/16"
65°F	1 1/2"
80°F	1 7/16"
95°F	1 3/8"

PROFILE GRADE (LOOKING UPSTATION) -1.06% →  
 GRADE PERPENDICULAR TO BACKWALL +2.94% →



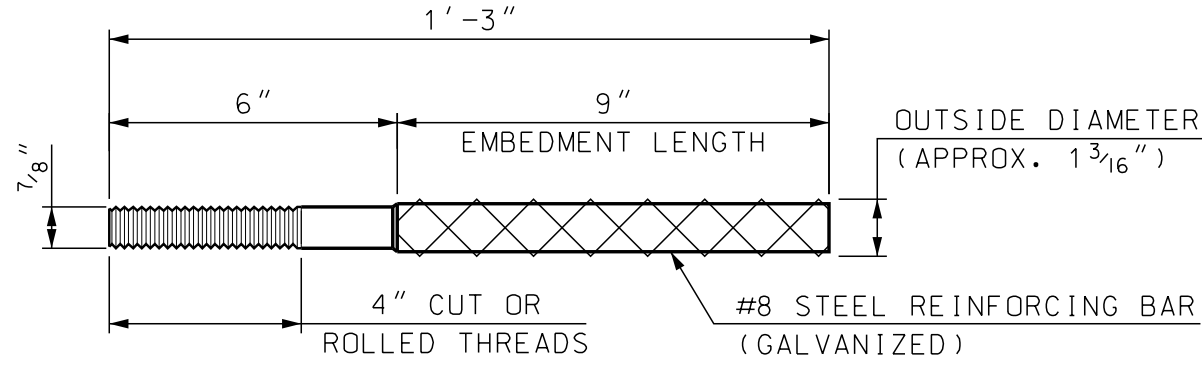
**SECTION A-A CONSTRUCTION**  
 SCALE: 1/2" = 1'-0"

**TEMPERATURE ADJUSTMENT NOTES**

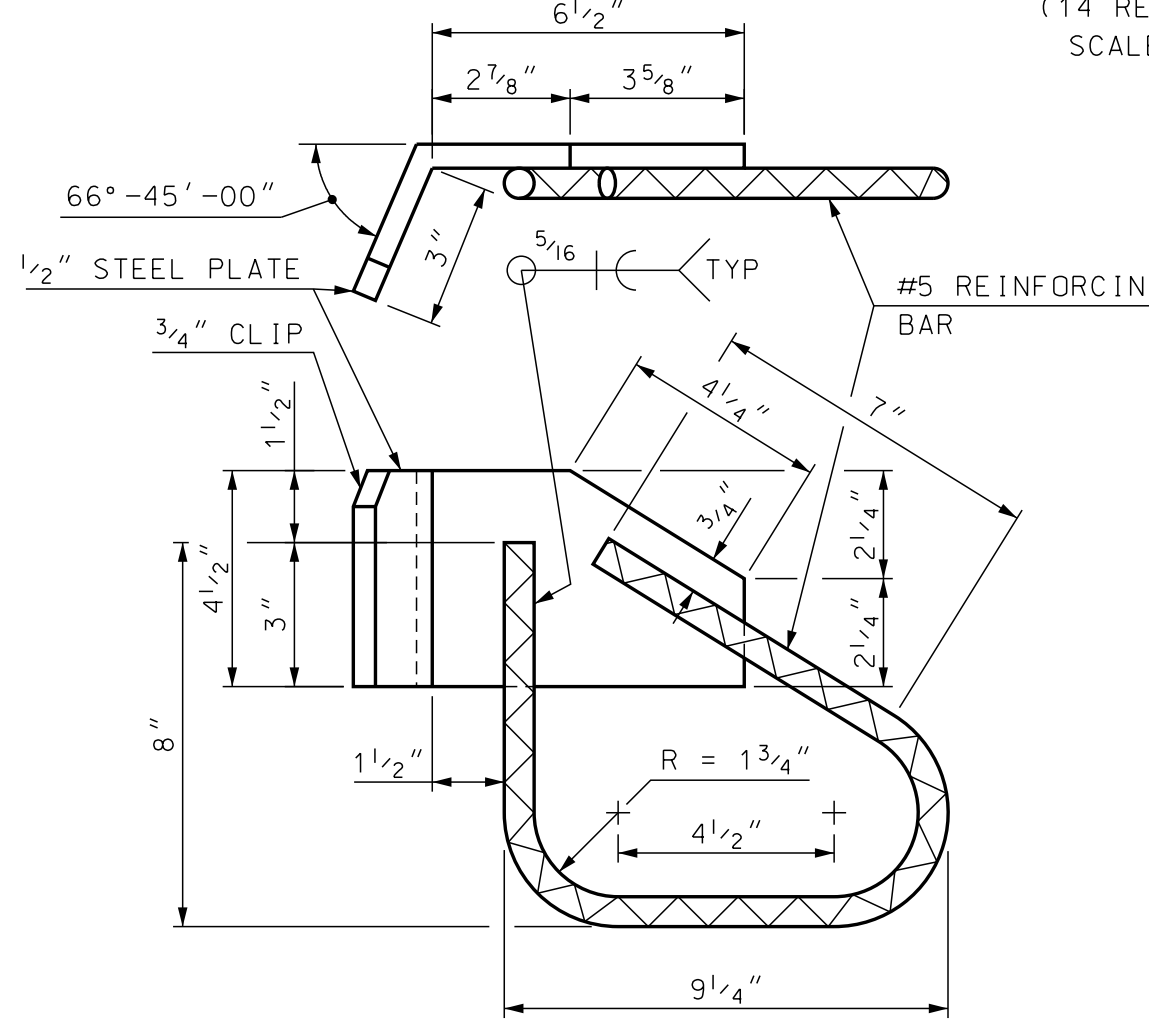
- "T" DIMENSIONS ARE PERPENDICULAR TO FACE OF BACKWALL.
- MINIMUM "T" WIDTH FOR SEAL INSTALLATION = 1 1/2" (APPROXIMATELY 65°F OR LESS).
- VALUES IN THE TEMPERATURE ADJUSTMENT TABLE ARE FOR SETTING THE EXPANSION JOINT ASSEMBLY IMMEDIATELY PRIOR TO POURING THE DECK BLOCKOUT.

**EXPANSION JOINT NOTES**

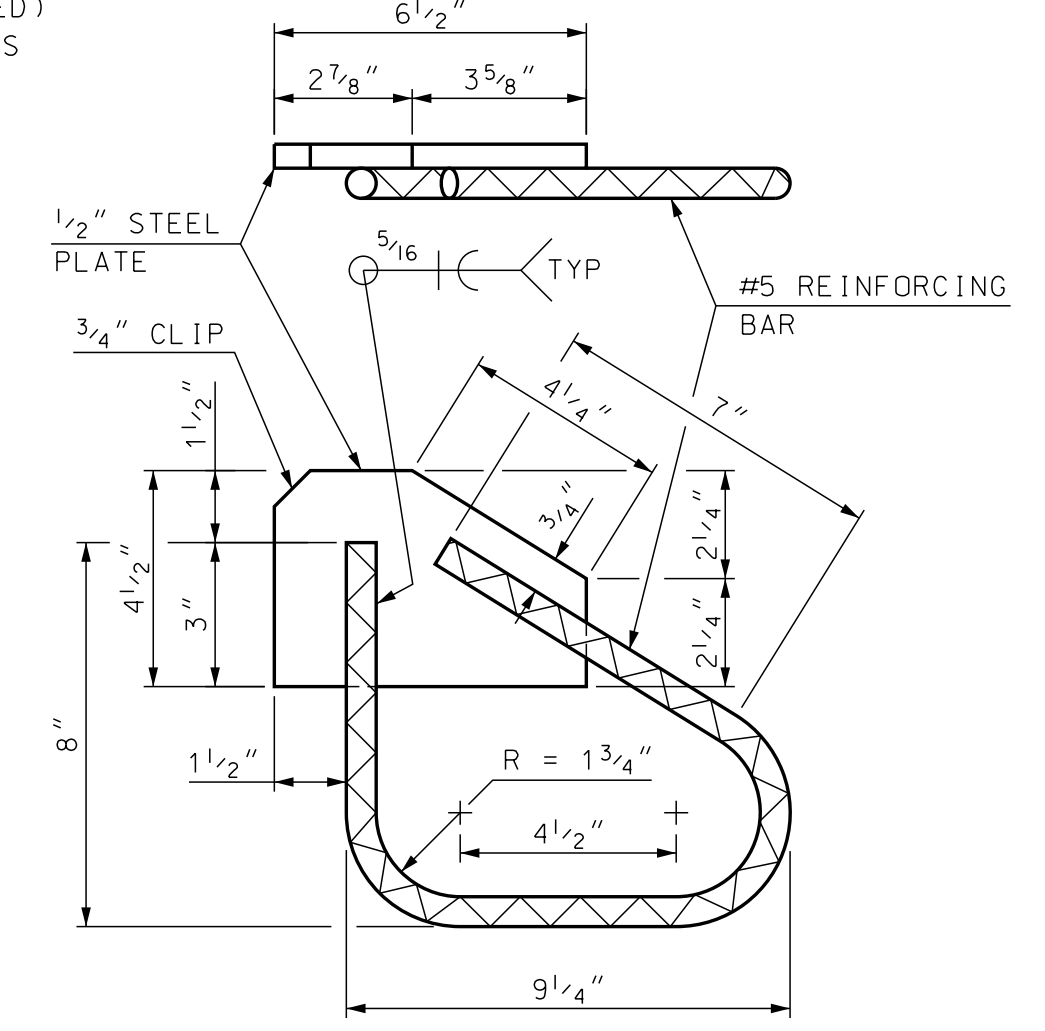
- ALL EXPANSION JOINT STEEL, INCLUDING ANCHORS, SHALL BE GALVANIZED. STEEL ANGLES SHALL BE ASTM A572 GRADE 50. MINOR STEEL PLATES MAY CONFORM TO ASTM A36. THE ENTIRE ASSEMBLY, INCLUDING STRIP SEAL, SHALL BE PAID FOR AS ITEM 561.1001, PREFABRICATED STRIP SEAL EXPANSION JOINT (F).
- SPLICES FOR STEEL ANGLES SHALL DEVELOP FULL STRENGTH.
- EXPANSION JOINT OPENING SHALL BE ADJUSTED TO TEMPERATURE ANTICIPATED JUST PRIOR TO POURING DECK BLOCKOUT. FINAL SETTING IN THE FIELD SHALL BE DETERMINED BY THE CONTRACT ADMINISTRATOR. SEE TEMPERATURE ADJUSTMENT TABLE & NOTES.
- STRIP SEAL SHALL BE FURNISHED IN ONE CONTINUOUS LENGTH. NO SPLICES WILL BE ALLOWED. SEAL SHALL BE INSTALLED IN THE FIELD BY THE CONTRACTOR. IN ACCORDANCE WITH THE MANUFACTURER OF THE SEAL, USING AN APPROVED TOOL THAT WILL NOT DAMAGE THE SEAL.
- JOINT SUPPORT PLATES AND CURB PLATES SHALL BE SHOP WELDED TO EXPANSION JOINT STEEL AND SHALL BE NORMAL TO GRADE AFTER JOINT ASSEMBLY HAS BEEN ADJUSTED FOR ROADWAY CROSS-SLOPE AND GRADE. STEEL ANGLES AND EXTRUSIONS SHALL BE ASSEMBLED WITH A CONSTANT JOINT OPENING TO ENSURE PROPER PERFORMANCE AND WATER TIGHTNESS.
- IMMEDIATELY AFTER THE JOINT HAS BEEN SECURED TO THE STRUCTURAL STEEL AND BACKWALL, REMOVE SHIPPING DEVICES AND GRIND SMOOTH ANY WELDS ON EXPOSED SURFACES. REPAIR ANY DAMAGE TO GALVANIZED SURFACES IN ACCORDANCE WITH SECTION 550.
- PROTECT TOP OF EXPANSION JOINT DURING PLACEMENT OF CONCRETE AND BITUMINOUS PAVEMENT.
- THE STRIP SEAL HAS BEEN DESIGNED FOR A TOTAL FACTORED MOVEMENT OF 1.21 INCHES. DESIGN INCLUDES MOVEMENT DUE TO TEMPERATURE, SKEW, SHRINKAGE AND MINIMUM INSTALLATION WIDTH. THE CONTRACTOR SHALL USE AN SE-400 SEAL BY WATSON BOWMAN OR A2R-400 BY D.S. BROWN.
- ELEVATIONS SHOWN AT TOP OF ANGLES ARE 1/8" LOWER THAN PROPOSED FINISHED ROADWAY GRADE.
- NO "LOW PROFILE" STEEL EXTRUSIONS SHALL BE ALLOWED. SEE OPL FOR APPROVED PRODUCTS.
- PRIOR TO INSTALLING THE SEAL, ALL TEMPORARY FORM WORK SHALL BE REMOVED. STEEL ANGLES AND EXTRUSIONS SHALL BE MAINTAINED FREE FROM DIRT, WATER, AND ANY OTHER LOOSE DEBRIS, WITH THE USE OF COMPRESSED AIR, TO ENSURE PROPER FIT OF THE SEAL. CARE SHALL BE TAKEN NOT TO DAMAGE GALVANIZED SURFACES.



**ANCHOR ROD DETAIL**  
 (14 REQUIRED)  
 SCALE: NTS



**DECK ANCHORAGE DETAIL**  
 SCALE: 3" = 1'-0"

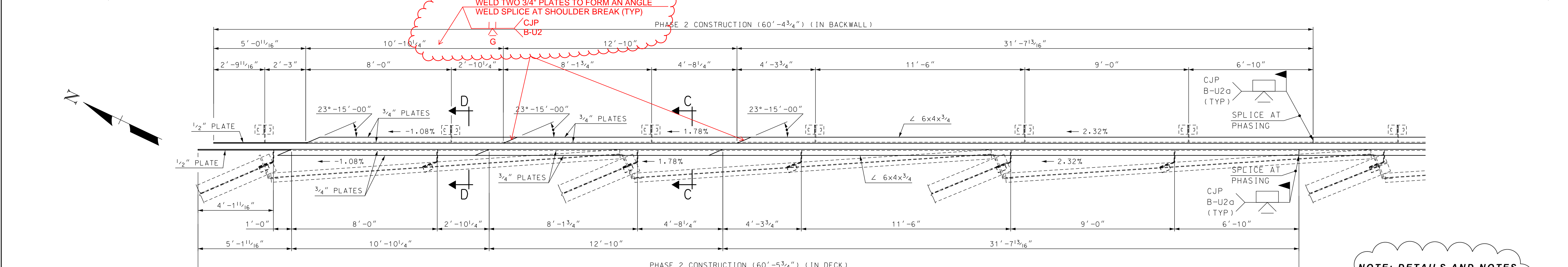
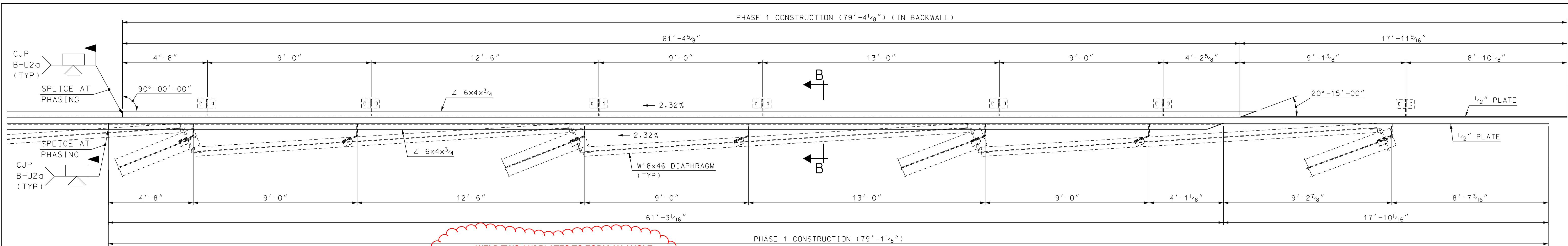


**BACKWALL ANCHORAGE DETAIL**  
 SCALE: 3" = 1'-0"

**SAMPLE PLAN**  
 DATE: 9-2020

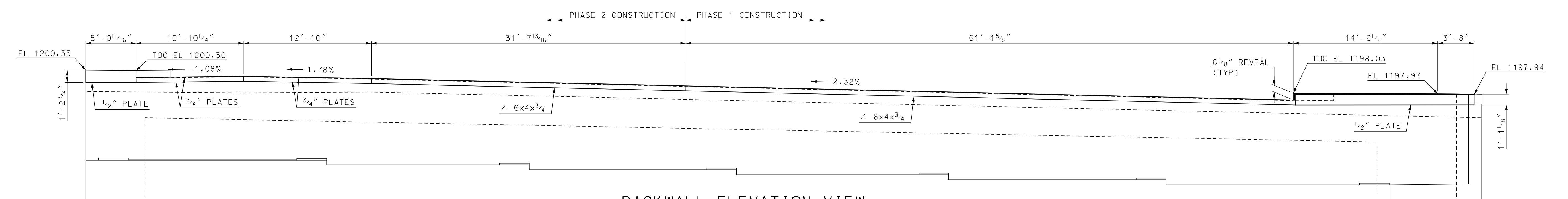
STATE OF NEW HAMPSHIRE DEPARTMENT OF TRANSPORTATION * BUREAU OF BRIDGE DESIGN					
TOWN	BETHLEHEM	BRIDGE NO.	125/177	STATE PROJECT	42501
LOCATION	US ROUTE 302 & NH ROUTE 10 over AMMONOOSUC RIVER				
<b>ABUT B STRIP SEAL EXP JT BR NO 125/177 (2 OF 4)</b>					BRIDGE SHEET
REVISIONS AFTER PROPOSAL					16 OF 34
DESIGNED	JEH	2/20	CHECKED	ABH	7/20
DRAWN	SMG/GMC	2/20	CHECKED	ABH	7/20
QUANTITIES	JEH	8/20	CHECKED	PML	8/20
ISSUE DATE	FEDERAL PROJECT NO.			SHEET NO.	TOTAL SHEETS
REV. DATE	-----			20	38

SUBDIRECTORY	DGN LOCATOR	SHEET SCALE
BRC/BETHLEHEM	125-177 exp jt B	AS NOTED

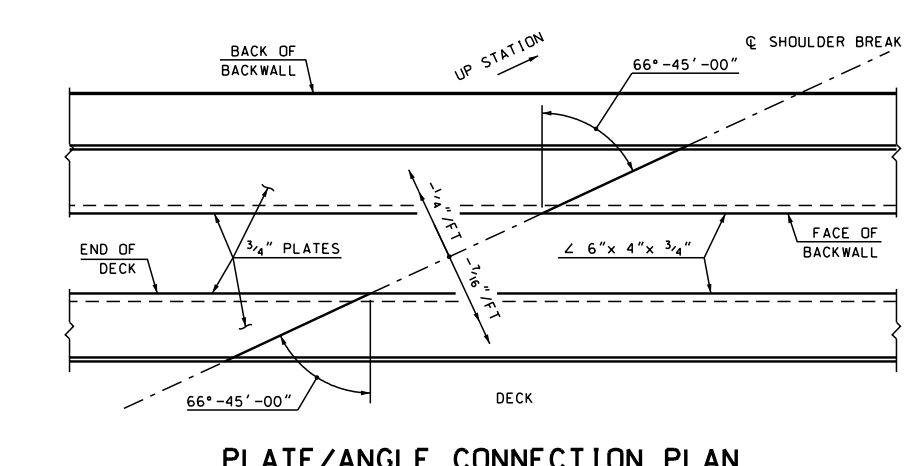
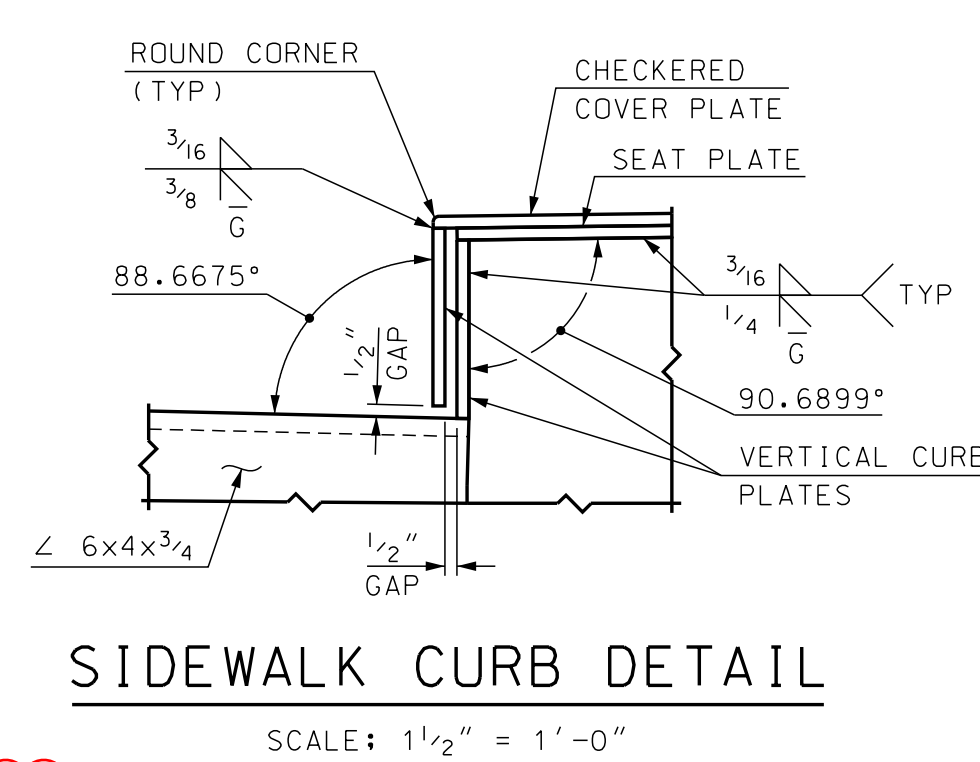
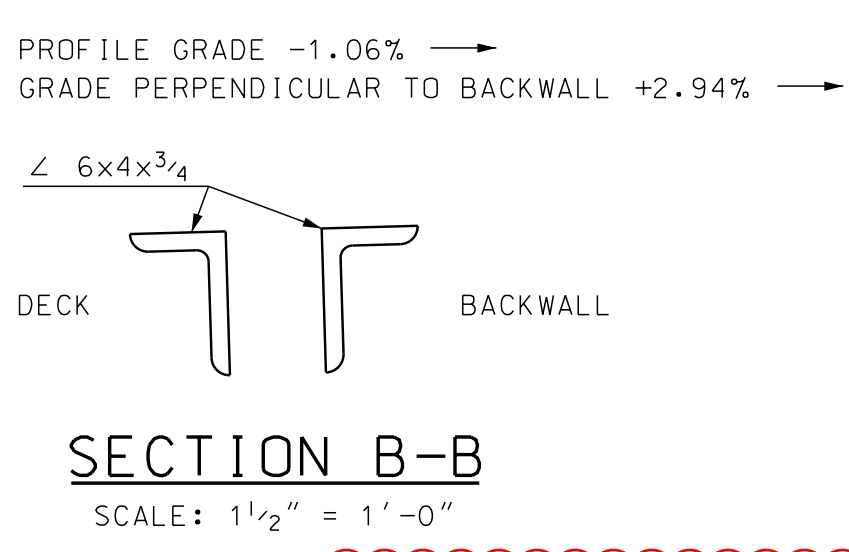
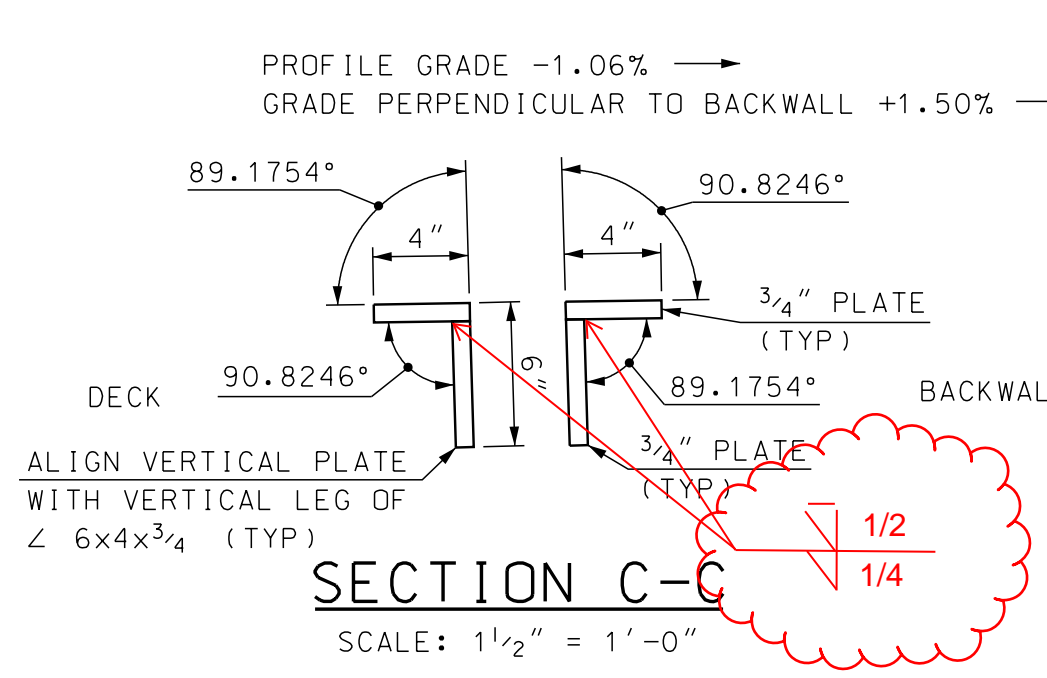
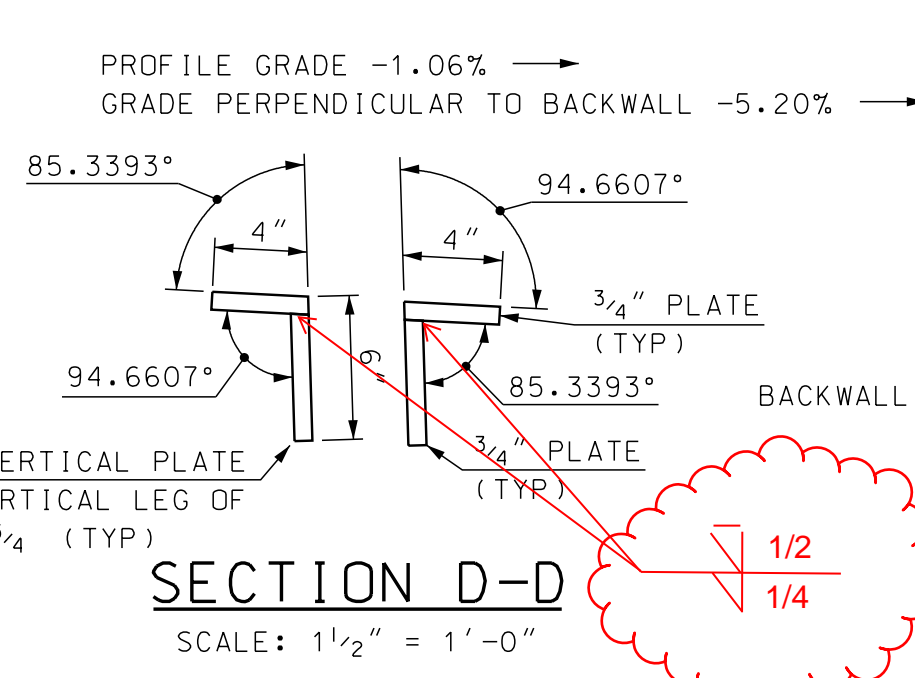


**SUPPORT AND PLATE LAYOUT**  
SCALE: 3/8" = 1'-0"

**NOTE: DETAILS AND NOTES MAY NOT BE CURRENT. CLOSELY REVIEW BEFORE USING DETAILS.**



**BACKWALL ELEVATION VIEW**  
SCALE: 3/16" = 1'-0"

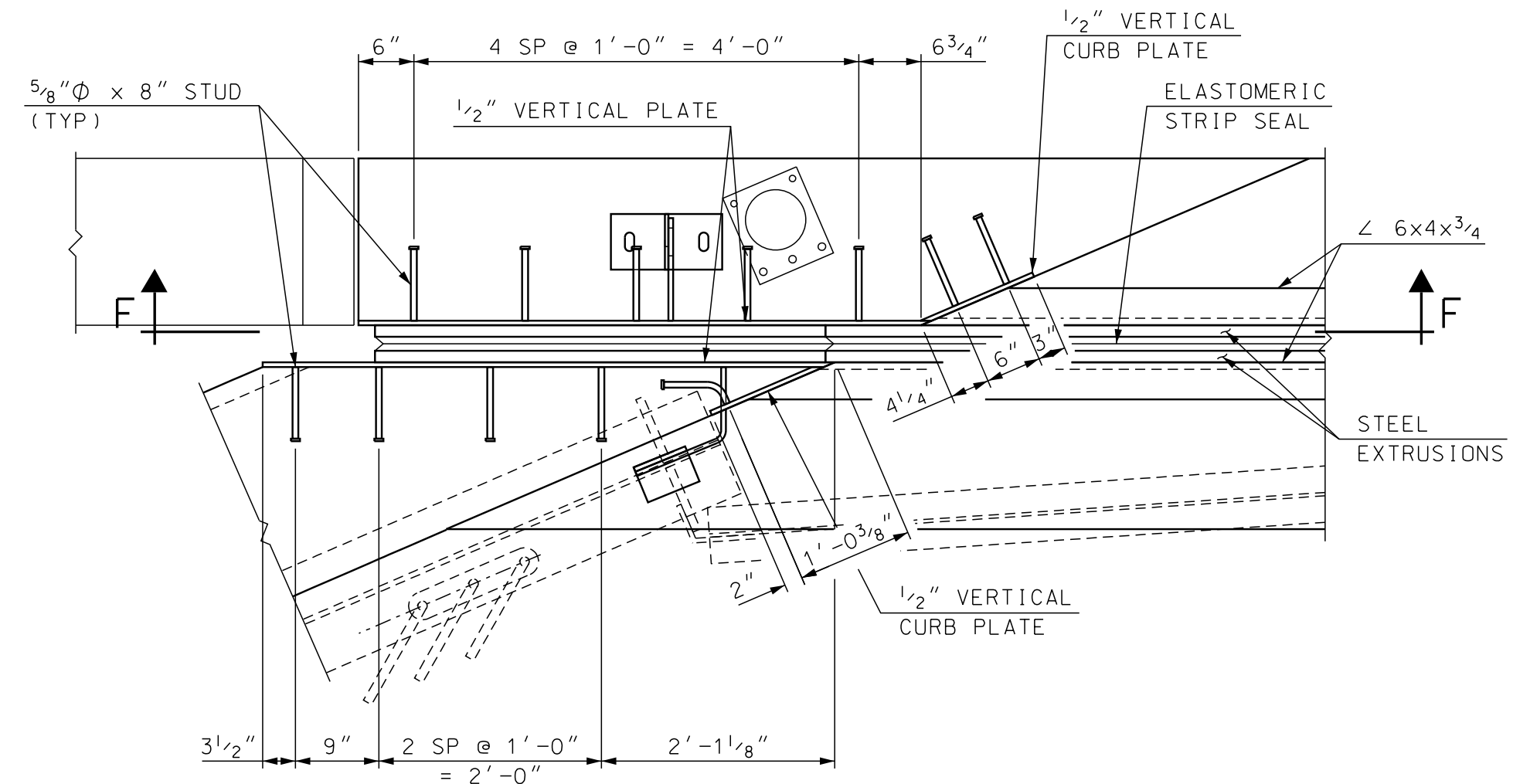


**SAMPLE PLAN**  
DATE: 9-2020

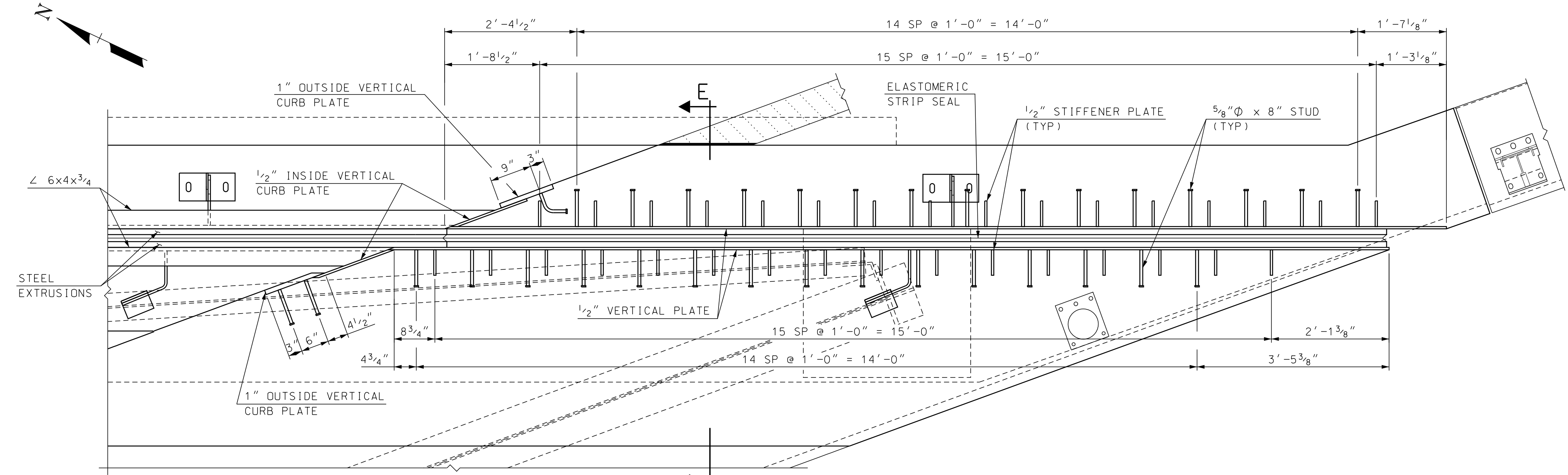
STATE OF NEW HAMPSHIRE DEPARTMENT OF TRANSPORTATION * BUREAU OF BRIDGE DESIGN									
TOWN	BETHLEHEM	BRIDGE NO.	125/177	STATE PROJECT	42501	BRIDGE SHEET			
LOCATION	US ROUTE 302 & NH ROUTE 10 over AMMONOOSUC RIVER					17 OF 34			
<b>ABUT B STRIP SEAL EXP JT BR NO 125/177 (3 OF 4)</b>						FILE NUMBER			
REVISIONS AFTER PROPOSAL						136-4-1			
DESIGNED	JEH	DATE	2/20	CHECKED	ABH	7/20	TOTAL SHEETS		
DRAWN	SMG/GMC	DATE	2/20	CHECKED	ABH	7/20	21		
QUANTITIES	JEH	DATE	8/20	CHECKED	PML	8/20	38		
ISSUE DATE	FEDERAL PROJECT NO.			SHEET NO.		TOTAL SHEETS			
REV. DATE	-----			21		38			

**REVISIONS 12/30/20**

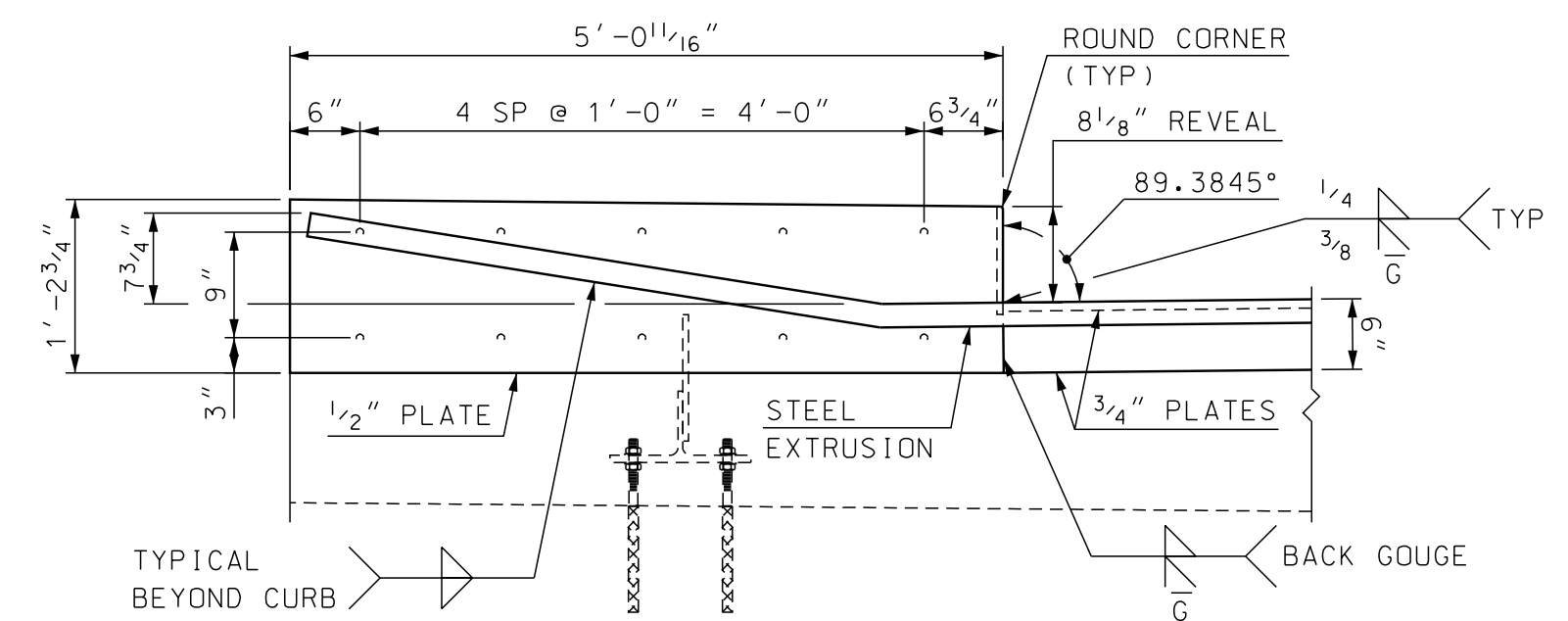
SUBDIRECTORY	DGN LOCATOR	SHEET SCALE
BRC/BETHLEHEM	125-177 exp jt B	AS NOTED



**STUD LAYOUT COPING**  
SCALE: 3/4" = 1'-0"

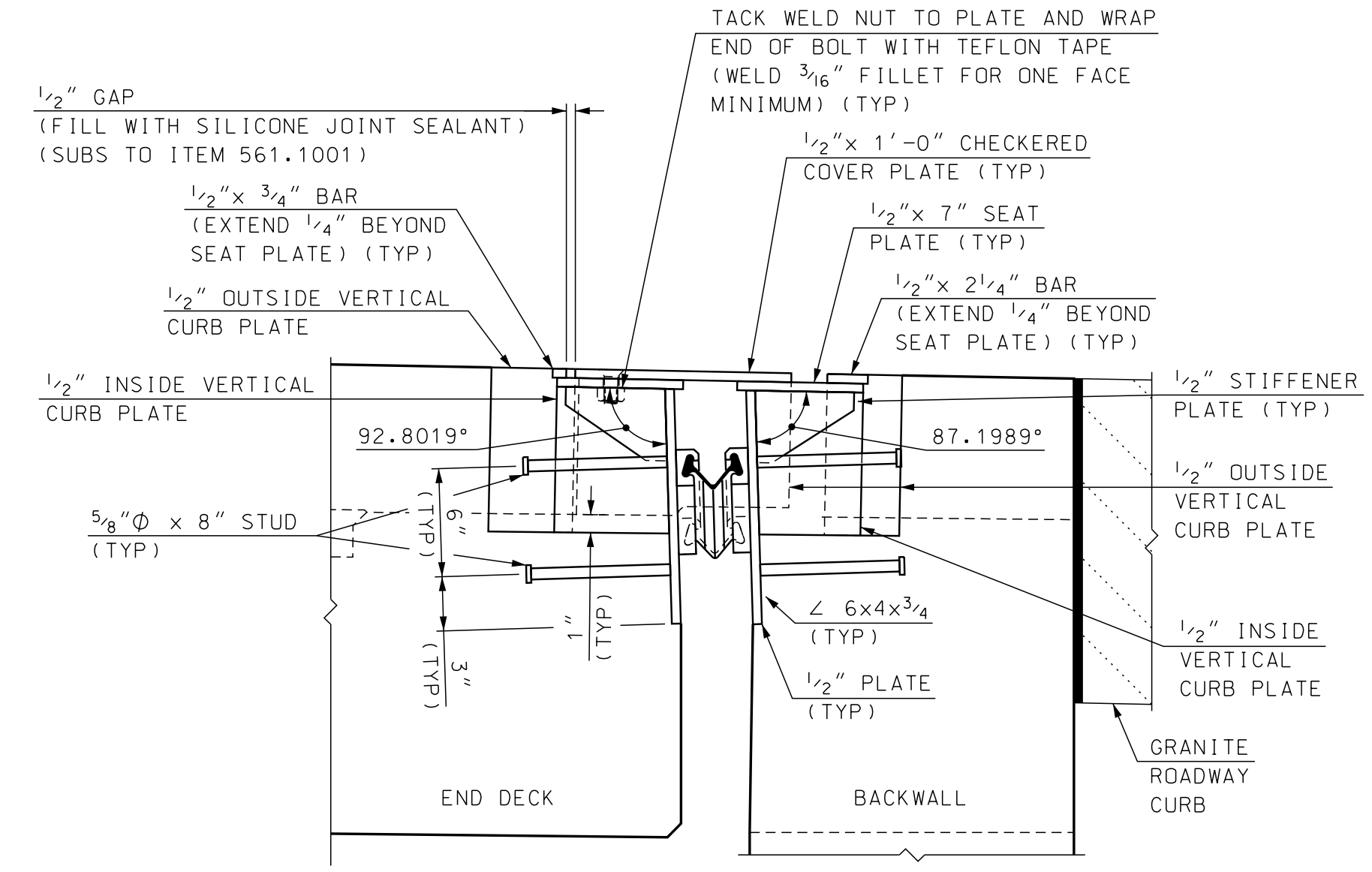


**LOWER ASSEMBLY**  
SCALE: 3/4" = 1'-0"

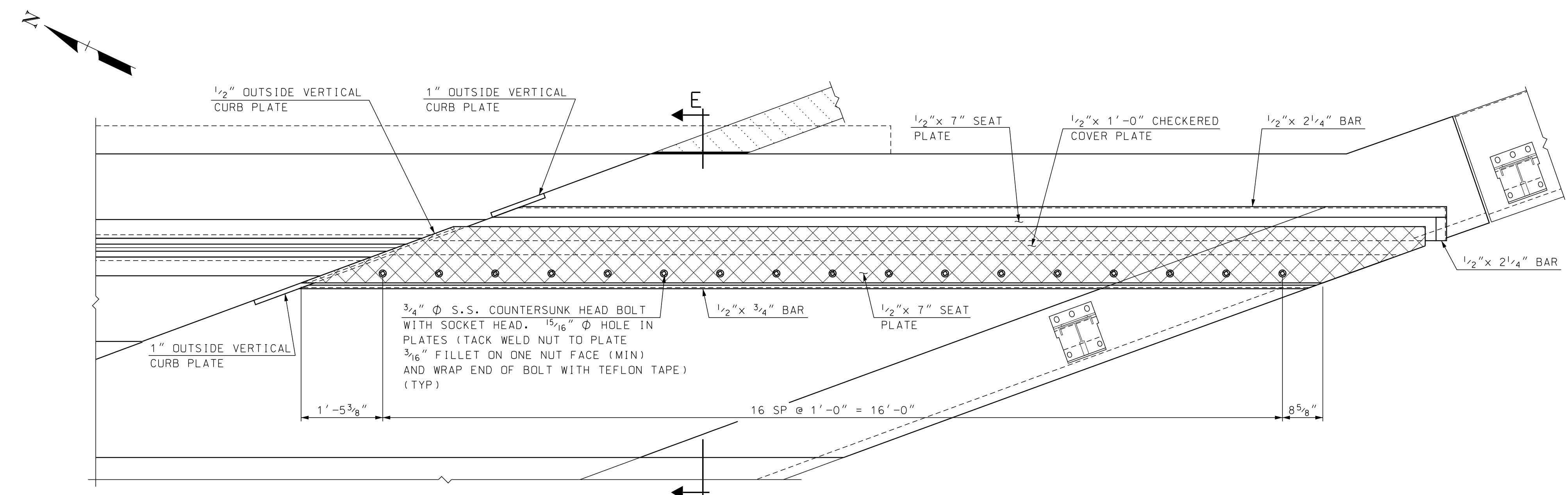


**SECTION F-F**  
SCALE: 3/4" = 1'-0"

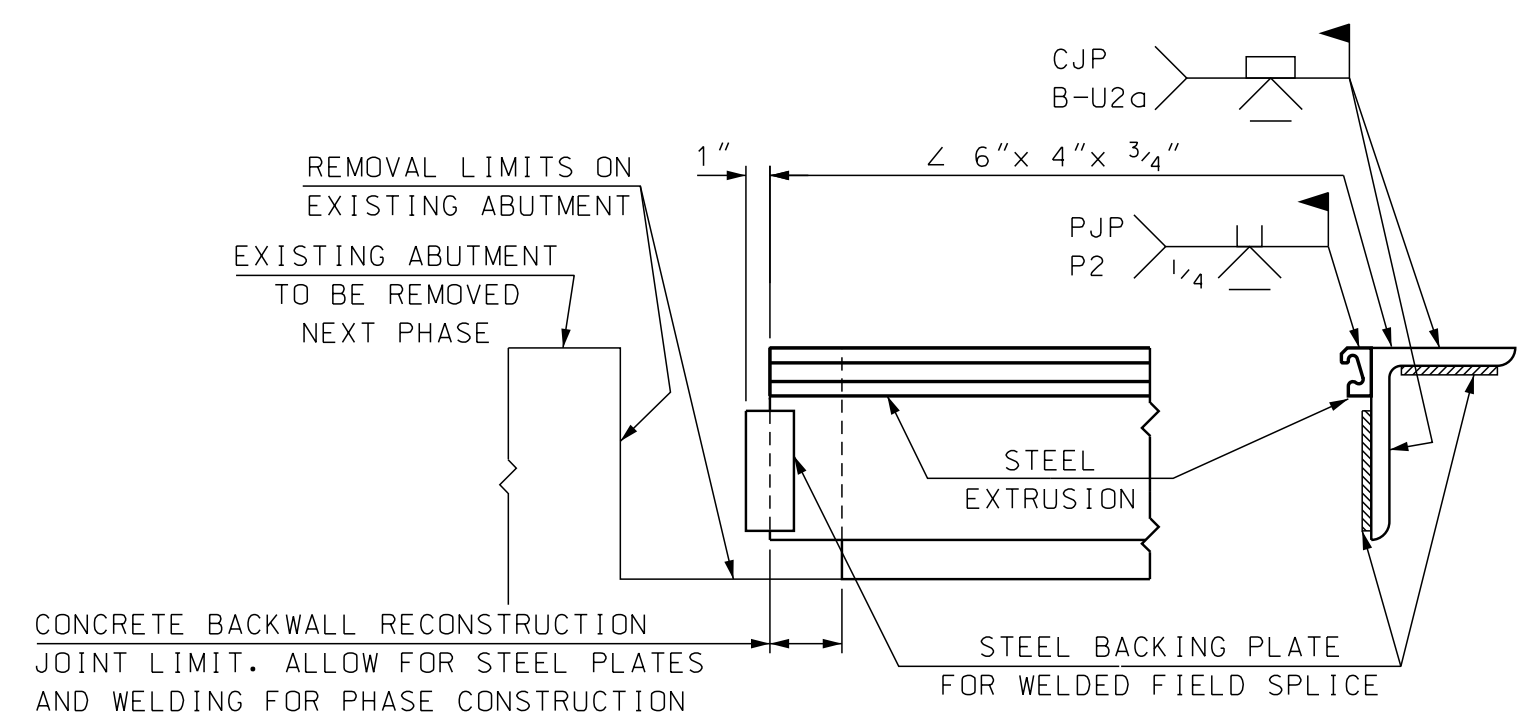
PROFILE GRADE -1.06% →  
SIDEWALK GRADE (SHOWN) PERPENDICULAR TO BACKWALL -1.95% →  
LEVEL AREA GRADE PERPENDICULAR TO BACKWALL -0.40% →



**SECTION E-E**  
SCALE: 1 1/2" = 1'-0"



**UPPER ASSEMBLY**  
SCALE: 3/4" = 1'-0"



**PHASE CONSTRUCTION  
FIELD WELD SPLICE DETAILS**  
NOT TO SCALE

**SAMPLE PLAN**  
DATE: 9-2020

**NOTE: DETAILS AND NOTES  
MAY NOT BE CURRENT.  
CLOSELY REVIEW BEFORE  
USING DETAILS.**

STATE OF NEW HAMPSHIRE DEPARTMENT OF TRANSPORTATION * BUREAU OF BRIDGE DESIGN					
TOWN	BETHLEHEM	BRIDGE NO.	125/177	STATE PROJECT	42501
LOCATION	US ROUTE 302 & NH ROUTE 10 over AMMONOOSUC RIVER				
<b>ABUT B STRIP SEAL EXP JT BR NO 125/177 (4 OF 4)</b>					BRIDGE SHEET
REVISIONS AFTER PROPOSAL					18 OF 34
DESIGNED	JEH	DATE	2/20	CHECKED	ABH 7/20
DRAWN	SMG/GMC	DATE	2/20	CHECKED	ABH 7/20
QUANTITIES	JEH	DATE	8/20	CHECKED	PML 8/20
ISSUE DATE	FEDERAL PROJECT NO.			SHEET NO.	TOTAL SHEETS
REV. DATE	-----			22	38

SUBDIRECTORY	DGN LOCATOR	SHEET SCALE
BRC/BETHLEHEM	125-177 exp jt B	AS NOTED