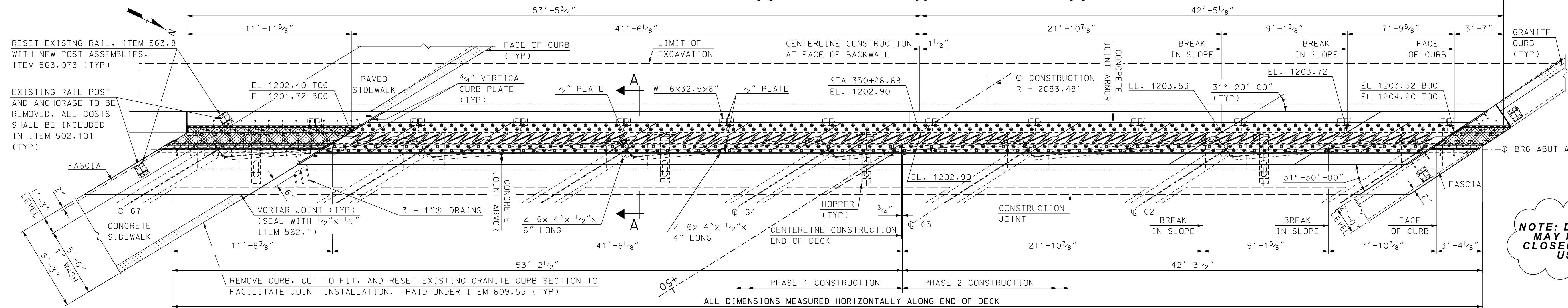


ALL DIMENSIONS MEASURED HORIZONTALLY ALONG FACE OF BACKWALL

PHASE 1 CONSTRUCTION PHASE 2 CONSTRUCTION

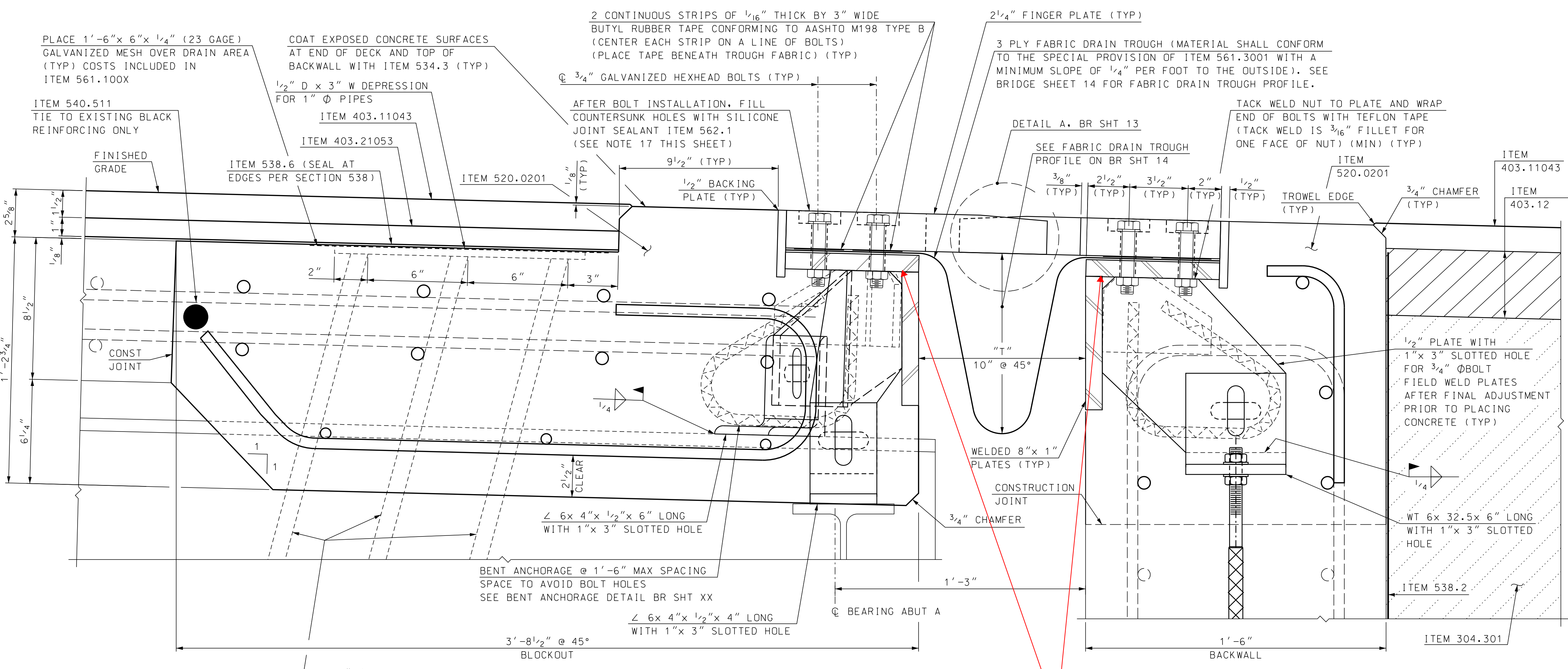


NOTE: DETAILS AND NOTES MAY NOT BE CURRENT. CLOSELY REVIEW BEFORE USING DETAILS.

PLAN - ABUTMENT A FINGER JOINT

SCALE: 1/4" = 1'-0"

PROFILE GRADE (LOOKING UPSTATION) -1.06% SLOPE PERPENDICULAR TO BACKWALL IN TRAVEL WAY -2.51%

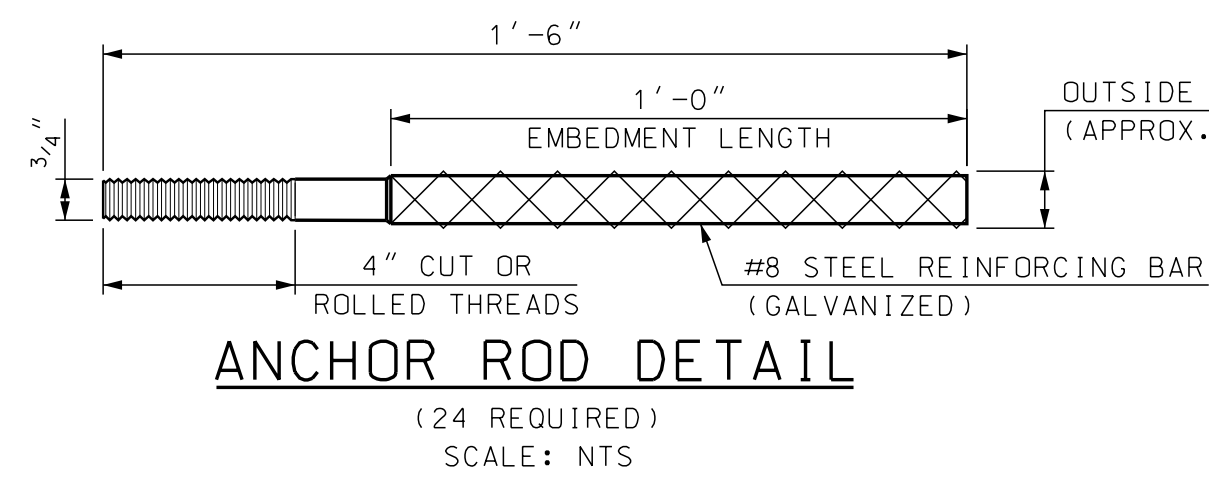


SECTION A-A

SCALE: 3" = 1'-0"

EXPANSION JOINT NOTES

- EXPANSION JOINT STEEL SHALL BE AASHTO M223 (ASTM A572) GR 50. MINOR STEEL PLATES MAY CONFORM TO AASHTO M183 (ASTM A36). ALL STEEL SHALL BE GALVANIZED. THE ENTIRE ASSEMBLY SHALL BE PAID AS ITEM 561.3001, PREFABRICATED FINGER EXPANSION JOINT (F).
- BOLTS IN THE CURBS OR SIDEWALKS SHALL BE STAINLESS STEEL COUNTERSUNK HEAD BOLTS WITH SOCKET HEAD AND SHALL CONFORM TO ASTM A276, TYPE 304. BOLTS IN THE ROADWAY SHALL BE GALVANIZED HIGH-STRENGTH BOLTS AND SHALL CONFORM TO ASTM A325. ANCHOR RODS SHALL BE GALVANIZED AND CONFORM TO ASTM A307.
- SPLICES FOR EXPANSION JOINT STEEL SHALL DEVELOP FULL STRENGTH.
- THE EXPANSION JOINT SHALL BE PRESET TO THE TEMPERATURE ANTICIPATED AT THE TIME OF INSTALLATION. FINAL SETTING IN THE FIELD SHALL BE DETERMINED BY THE ENGINEER (SEE TEMPERATURE TABLE ON THIS SHEET). THE MAXIMUM MOVEMENT IS 3/4 INCHES.
- PROTECT TOP OF EXPANSION JOINT DURING PLACEMENT OF CONCRETE AND BITUMINOUS PAVEMENT.
- JOINT SUPPORT PLATES SHALL BE SHOP WELDED TO THE EXPANSION JOINT STEEL AND SHALL BE VERTICAL AFTER THE JOINT ASSEMBLY HAS BEEN ADJUSTED FOR ROADWAY CROSS-SLOPE AND GRADE.
- FASCIA AND CURB PLATES SHALL BE SHOP WELDED AND SHALL BE VERTICAL AFTER THE JOINT ASSEMBLY HAS BEEN ADJUSTED FOR ROADWAY CROSS-SLOPE AND GRADE.
- IMMEDIATELY AFTER THE JOINT HAS BEEN SECURED TO THE STRUCTURAL STEEL AND BACKWALL, REMOVE SHIPPING DEVICES. WELDING OF SHIPPING DEVICES TO FINGER PLATE SHALL NOT BE ALLOWED.
- THE FINGER PLATES SHALL BE CUT FROM ONE CONTINUOUS 2'-0" WIDE x 2 1/4" THICK PLATE AS SHOWN ON THE FINGER CUTTING DETAIL, AND FURNISHED IN 9 DIFFERENT LENGTHS.
- THE HOPPERS AND DOWNSPOUTS SHALL BE A36 STEEL AND GALVANIZED IN ACCORDANCE WITH SECTION 550. PAYMENT FOR HOPPERS, BLOCKING PADS AND ALL ATTACHMENTS WILL BE SUBSIDIARY TO ITEM 561.3001.
- ELEVATIONS SHOWN AT TOP OF FINGER PLATES ARE 1/8" LOWER THAN THE PROPOSED FINISHED ROADWAY GRADE.
- SEE BRIDGE SHEET 14 FOR HOPPER DETAILS.
- THE FABRIC TROUGH SHALL BE PREFORMED FABRIC MATERIAL AND SHALL BE CUT DURING SHOP PRE-ASSEMBLY. THE TROUGH MAY BE SUPPLIED IN 8 LENGTHS WITH 1'-0" OVERLAP AS REQUIRED. SEE BRIDGE SHEET 14 FOR FABRIC TROUGH SPLICE DETAIL.
- TRIM EXCESS FABRIC BEHIND CURB PLATES.
- RUBBER BLOCKS USED BETWEEN ABUTMENT CONCRETE AND DOWNSPOUTS SHALL BE MOLDED TO A THICKNESS OF 2" AND CUT BY THE FABRICATOR TO LENGTHS AND WIDTHS SPECIFIED IN THE PLANS. RUBBER BLOCKS SHALL BE OZONE, WATER, AND TEMPERATURE RESISTANT, AND BONDED TO THE FACE OF ABUTMENT WITH A COMPATIBLE ADHESIVE IN ACCORDANCE WITH THE MANUFACTURER'S RECOMMENDATIONS.
- THE EXPANSION JOINT ASSEMBLY SHALL BE INSTALLED ONLY AFTER THE APPROACH FILLS HAVE BEEN CONSTRUCTED TO THE BOTTOM OF THE APPROACH SLAB.
- AFTER BOLT INSTALLATION, FILL COUNTERSUNK HOLES WITH ITEM 562.1, SILICONE JOINT SEALANT (F) (APPROX. 1 LF/HOLE).



TEMPERATURE ADJUSTMENT TABLE	
TEMPERATURE	"T"
15°F	10 1/4"
30°F	10 1/8"
45°F	10"
60°F	9 13/16"
75°F	9 11/16"
90°F	9 1/2"

- TEMPERATURE ADJUSTMENT NOTES**
- "T" DIMENSIONS ARE PERPENDICULAR TO FACE OF BACKWALL.
 - VALUES IN THE TEMPERATURE ADJUSTMENT TABLE ARE FOR SETTING THE EXPANSION JOINT ASSEMBLY IMMEDIATELY PRIOR TO POURING THE DECK BLOCKOUT.

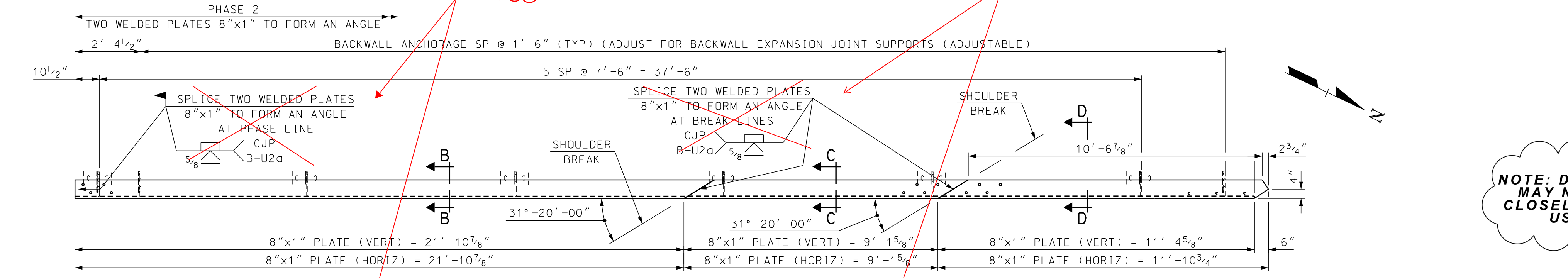
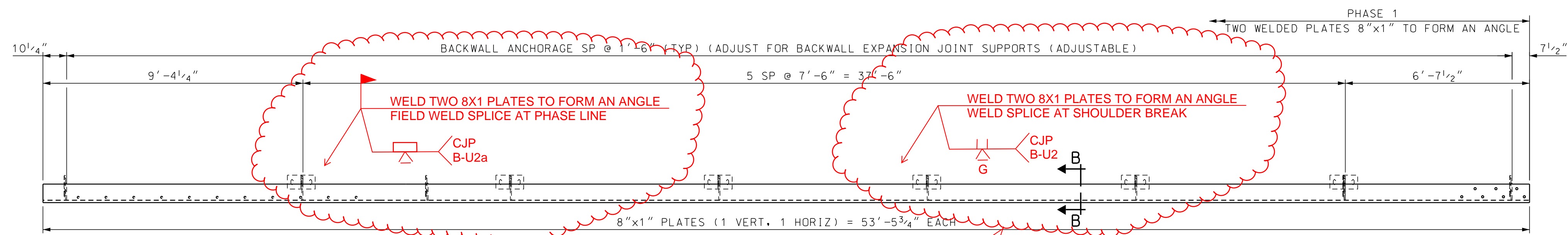
NOTE: PROPOSED EXPANSION JOINT AND CONCRETE ARMORING TO BE SET TO ACCOMMODATE 3/8" CHANGE IN FINISHED GRADE.

REVISIONS 12/30/20

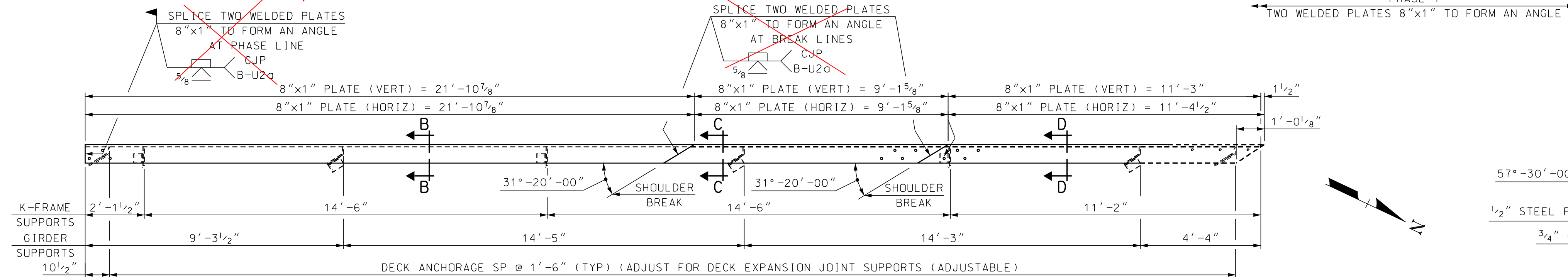
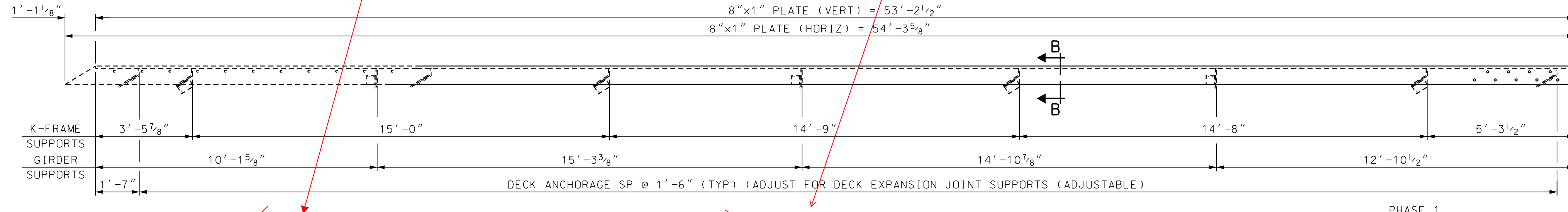
SAMPLE PLAN
DATE: 9-2020

SUBDIRECTORY	DGN LOCATOR	SHEET SCALE
BRC/BETHLEHEM	42501 ABUT-AFingerJt	AS NOTED

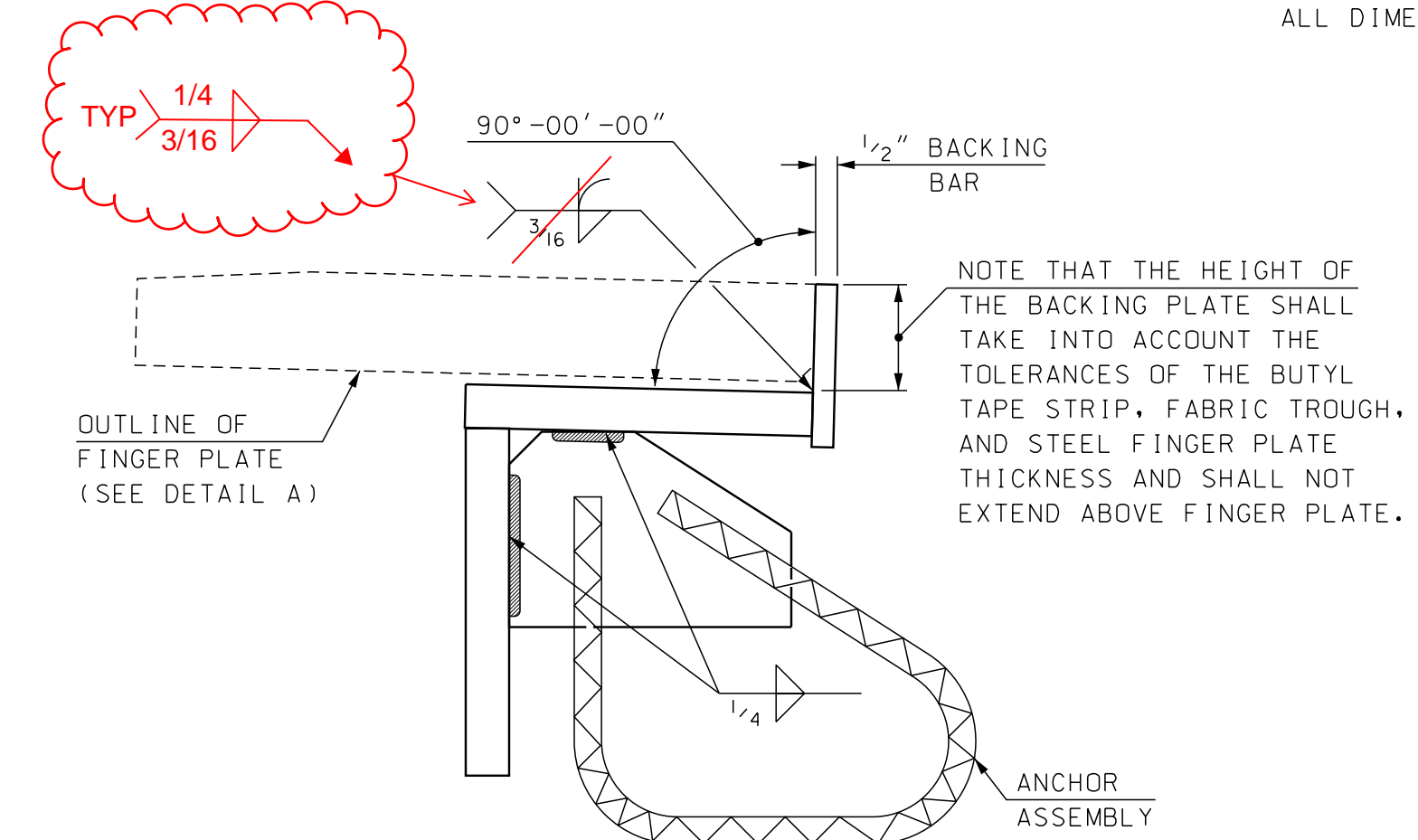
STATE OF NEW HAMPSHIRE					
DEPARTMENT OF TRANSPORTATION * BUREAU OF BRIDGE DESIGN					
TOWN	BETHLEHEM	BRIDGE NO.	125/177	STATE PROJECT	42501
LOCATION US ROUTE 302 & NH ROUTE 10 over AMMONOOSUC RIVER					
ABUT A FINGER EXP JT BR NO 125/177 (1 OF 5)					BRIDGE SHEET
REVISIONS AFTER PROPOSAL					10 OF 34
DESIGNED	JEH	3/20	CHECKED	ABH	7/20
DRAWN	GMC/SMG	3/20	CHECKED	ABH	7/20
QUANTITIES	JMH	8/20	CHECKED	PML	8/20
ISSUE DATE			FEDERAL PROJECT NO.		SHEET NO.
REV. DATE					14
					38



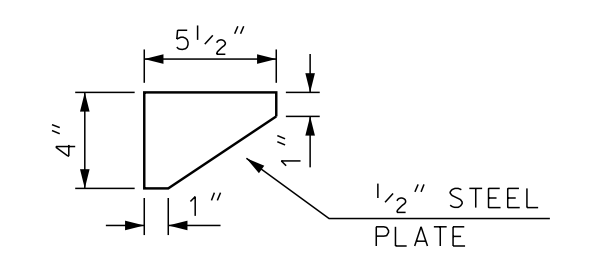
PLAN - BACKWALL ANCHORS AND JOINT SUPPORT ABUTMENT A
SCALE: 3/8" = 1'-0"
ALL DIMENSIONS GIVEN ARE HORIZONTAL



PLAN - DECK ANCHORS AND SUPPORT ABUTMENT A
SCALE: 3/8" = 1'-0"
ALL DIMENSIONS GIVEN ARE HORIZONTAL

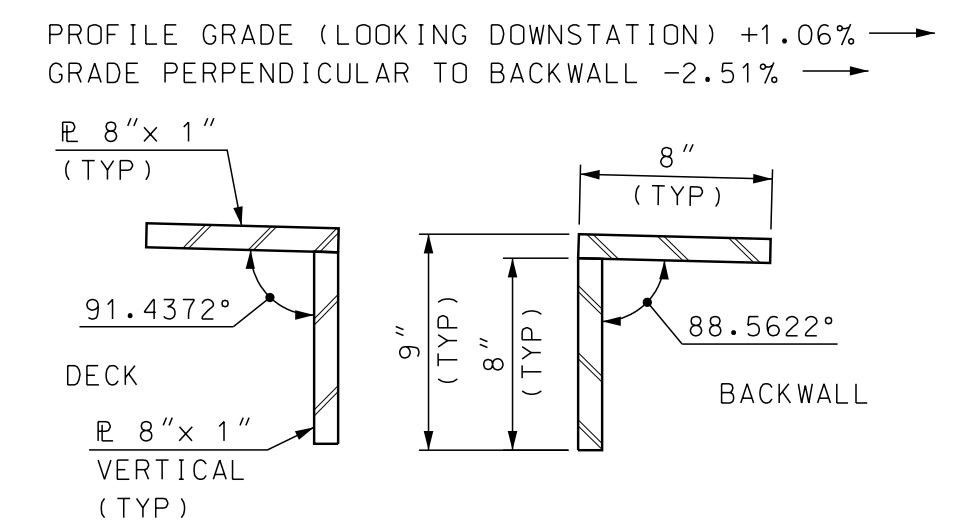


DETAIL B
SCALE: 3" = 1'-0"

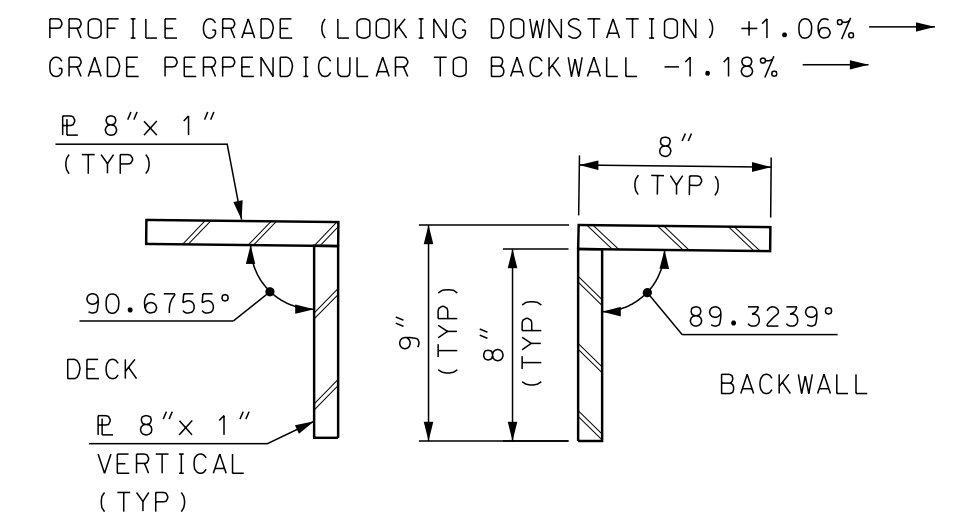


SIDEWALK SUPPORT PLATE
SCALE: 1 1/2" = 1'-0"

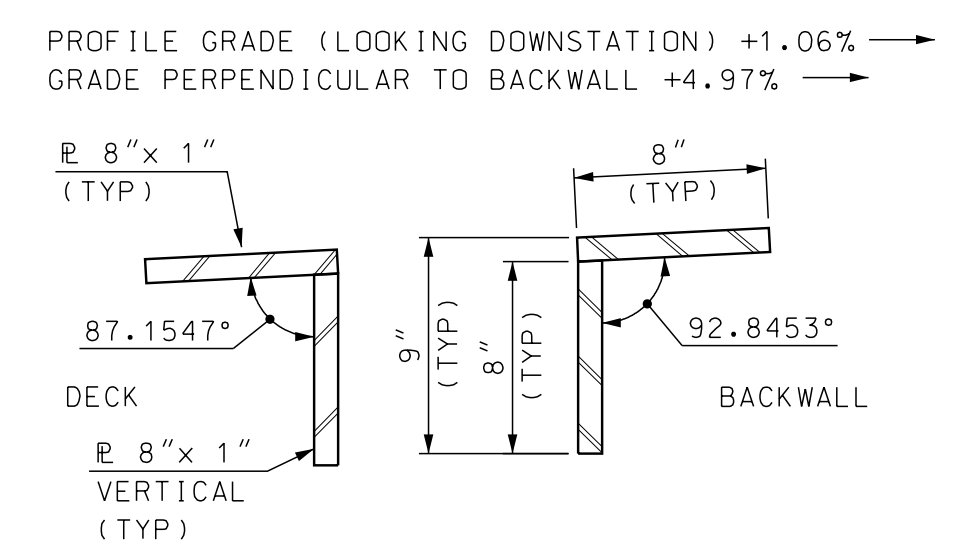
NOTE: DETAILS AND NOTES MAY NOT BE CURRENT. CLOSELY REVIEW BEFORE USING DETAILS.



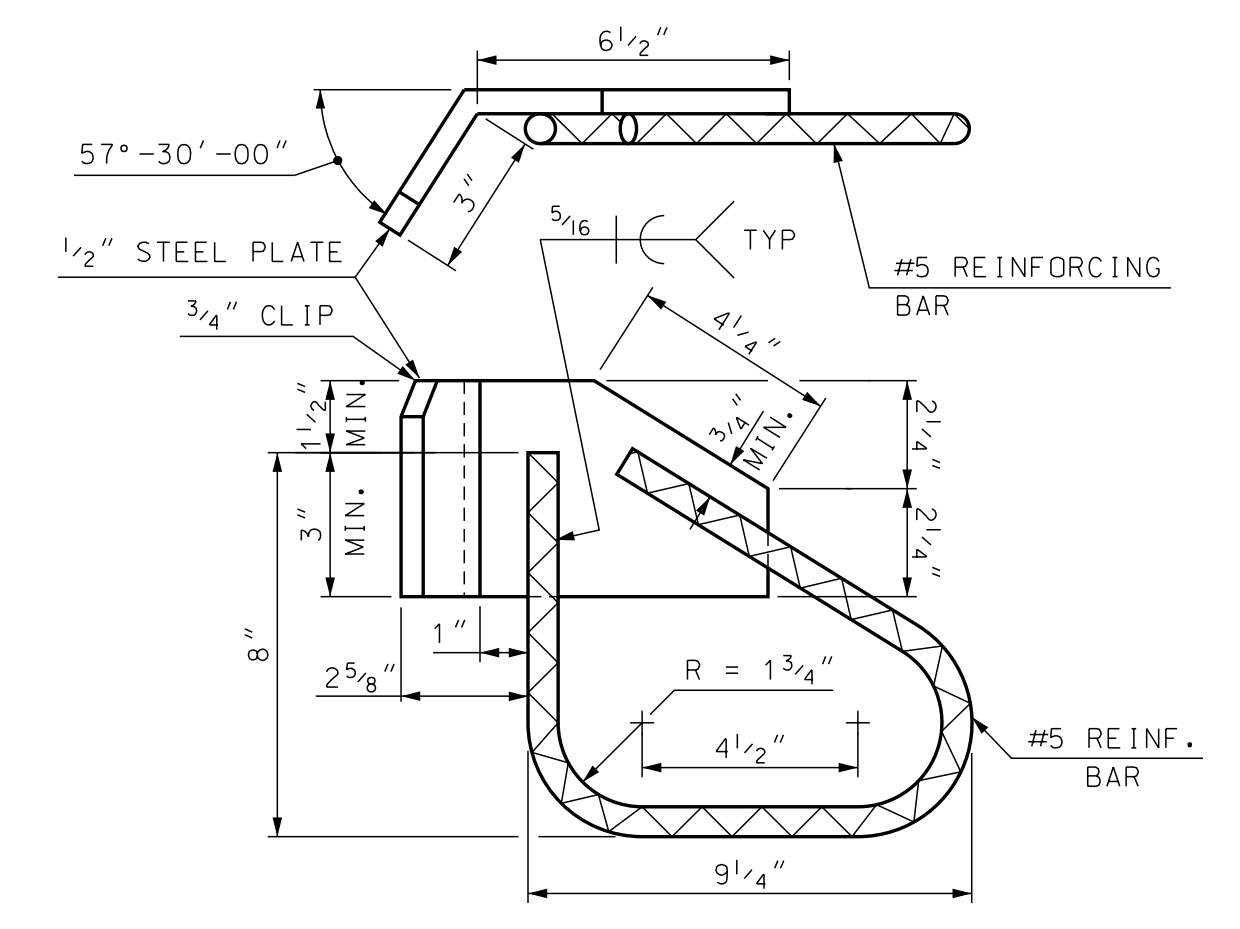
SECTION B-B
SCALE: 1 1/2" = 1'-0"



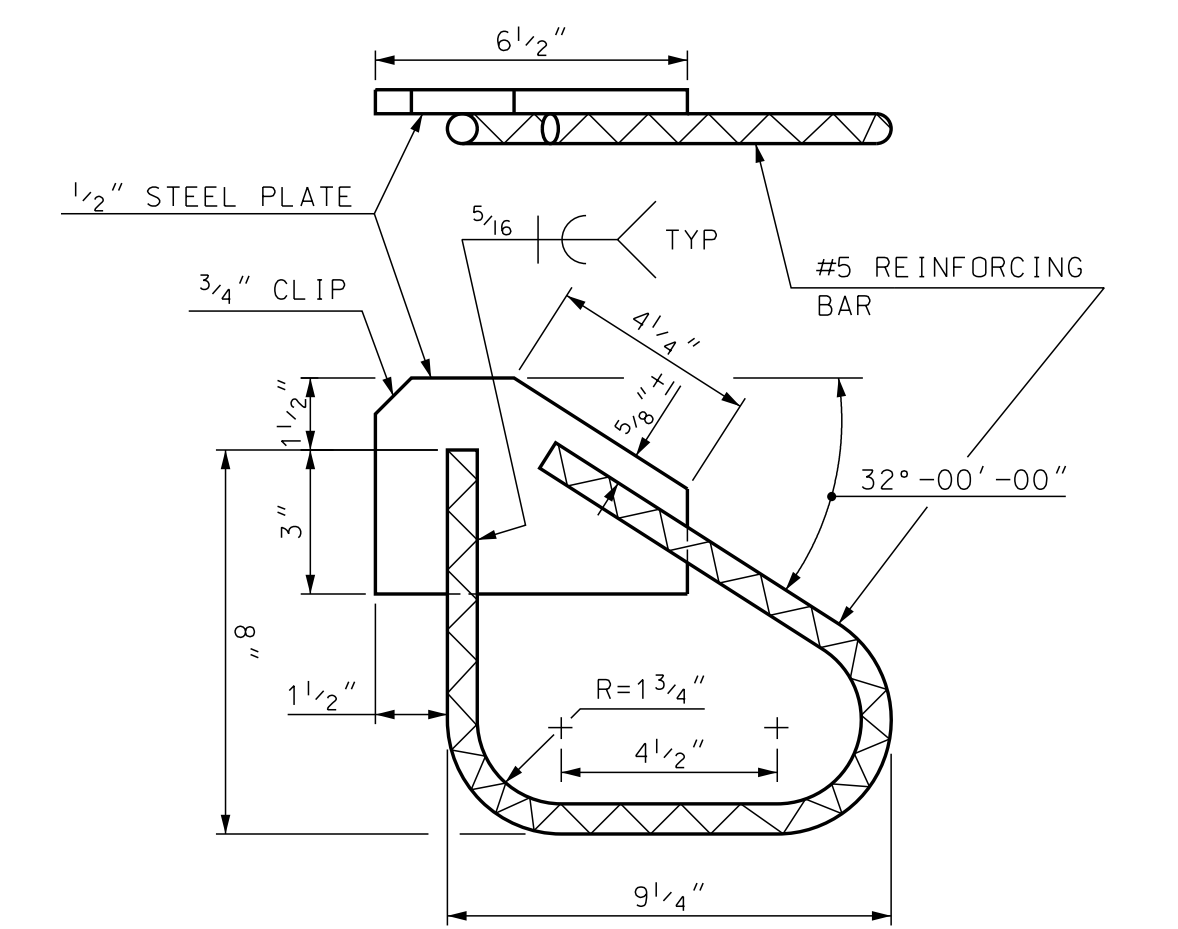
SECTION C-C
SCALE: 1 1/2" = 1'-0"



SECTION D-D
SCALE: 1 1/2" = 1'-0"



DECK ANCHORAGE DETAIL
SCALE: 3" = 1'-0"



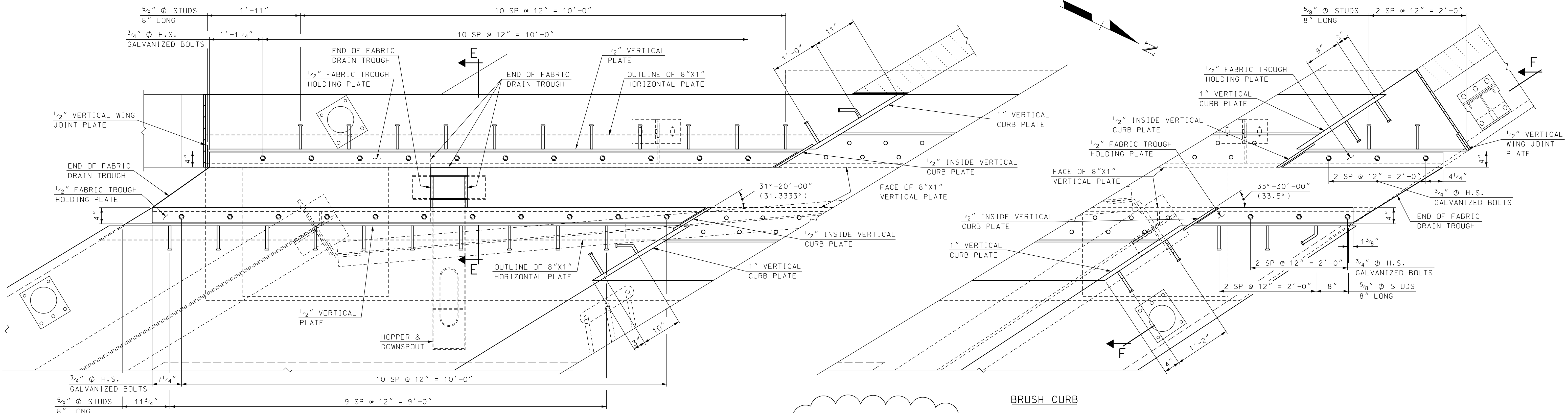
BACKWALL ANCHORAGE DETAIL
SCALE: 3" = 1'-0"

SAMPLE PLAN
DATE: 9-2020

REVISIONS 12/30/20

STATE OF NEW HAMPSHIRE					
DEPARTMENT OF TRANSPORTATION * BUREAU OF BRIDGE DESIGN					
TOWN	BETHLEHEM	BRIDGE NO.	125/177	STATE PROJECT	42501
LOCATION	US ROUTE 302 & NH ROUTE 10 over AMMONOOSUC RIVER				BRIDGE SHEET
ABUT A FINGER EXP JT BR NO 125/177 (2 OF 5)					11 OF 34
DESIGNED	JEH	3/20	CHECKED	ABH	7/20
DRAWN	GMC/SMG	3/20	CHECKED	ABH	7/20
QUANTITIES	JEH	8/20	CHECKED	PML	8/20
ISSUE DATE	FEDERAL PROJECT NO.			SHEET NO.	TOTAL SHEETS
REV. DATE	-----			15	38

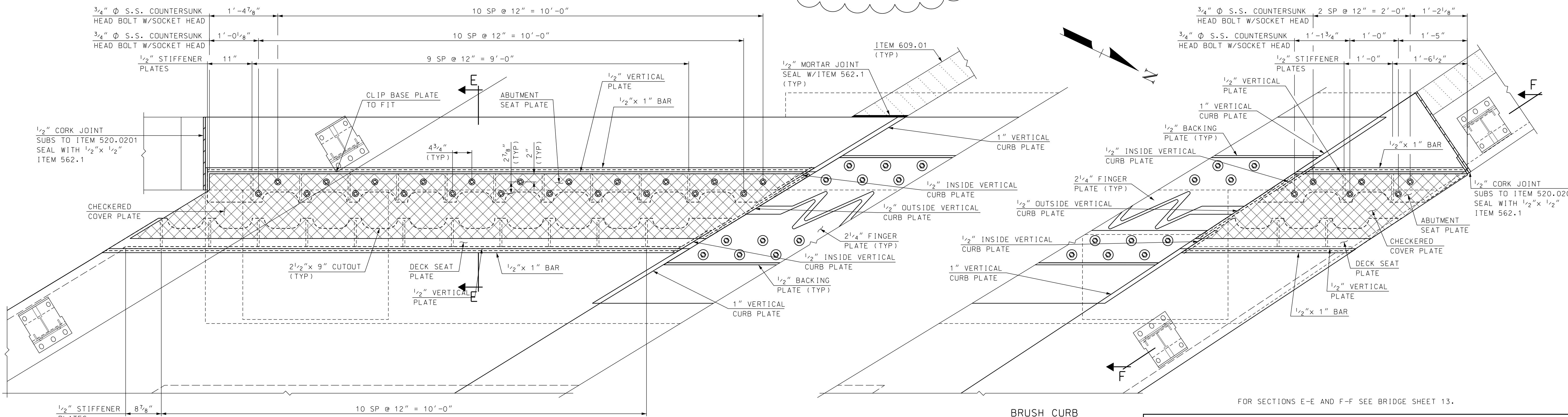
SUBDIRECTORY	DGN LOCATOR	SHEET SCALE
BRC/BETHLEHEM	42501 ABUT-AFingerJt	AS NOTED



SIDEWALK

LOWER ASSEMBLY
SCALE: 1" = 1'-0"

BRUSH CURB



SIDEWALK

UPPER ASSEMBLY
SCALE: 1" = 1'-0"

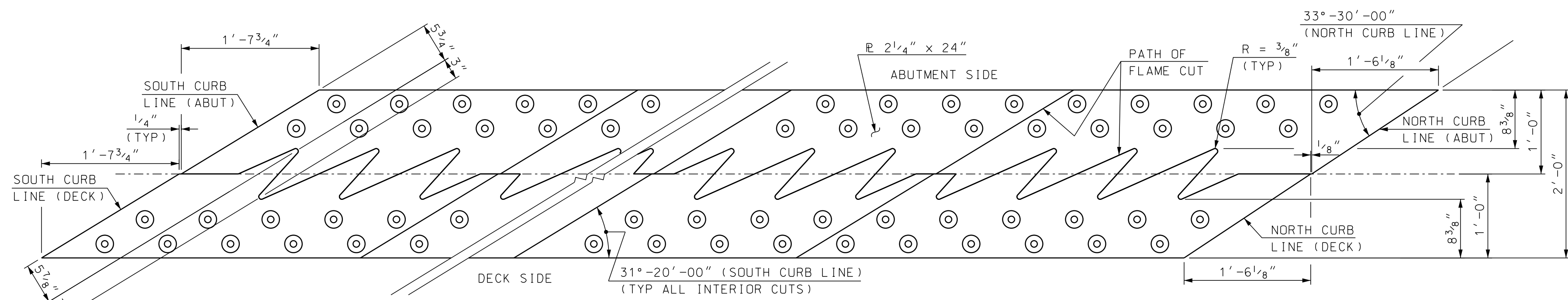
BRUSH CURB

FOR SECTIONS E-E AND F-F SEE BRIDGE SHEET 13.

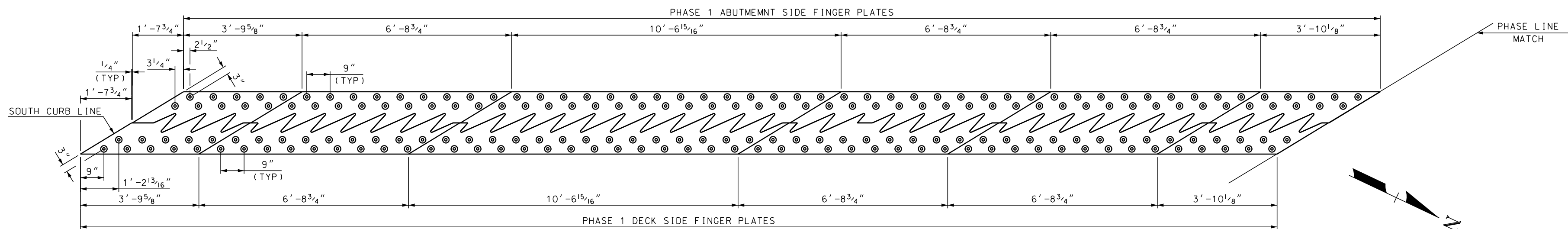
SAMPLE PLAN
DATE: 9-2020

STATE OF NEW HAMPSHIRE					
DEPARTMENT OF TRANSPORTATION * BUREAU OF BRIDGE DESIGN					
TOWN	BETHLEHEM	BRIDGE NO.	125/177	STATE PROJECT	42501
LOCATION	US ROUTE 302 & NH ROUTE 10 over AMMONOOSUC RIVER				
ABUT A FINGER EXP JT BR NO 125/177 (3 OF 5)					BRIDGE SHEET
REVISIONS AFTER PROPOSAL					12 OF 34
DESIGNED	JEH	DATE	3/20	CHECKED	ABH 7/20
DRAWN	GMC/SMG	DATE	3/20	CHECKED	ABH 7/20
QUANTITIES	JEH	DATE	8/20	CHECKED	PML 8/20
ISSUE DATE	FEDERAL PROJECT NO.			SHEET NO.	TOTAL SHEETS
REV. DATE	-----			16	38

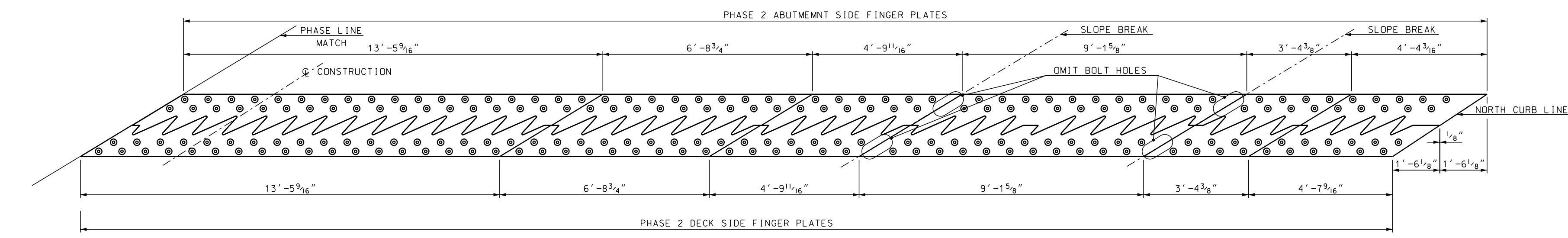
SUBDIRECTORY	DGN LOCATOR	SHEET SCALE
BRC/BETHLEHEM	42501 ABUT-AFingerJt	AS NOTED



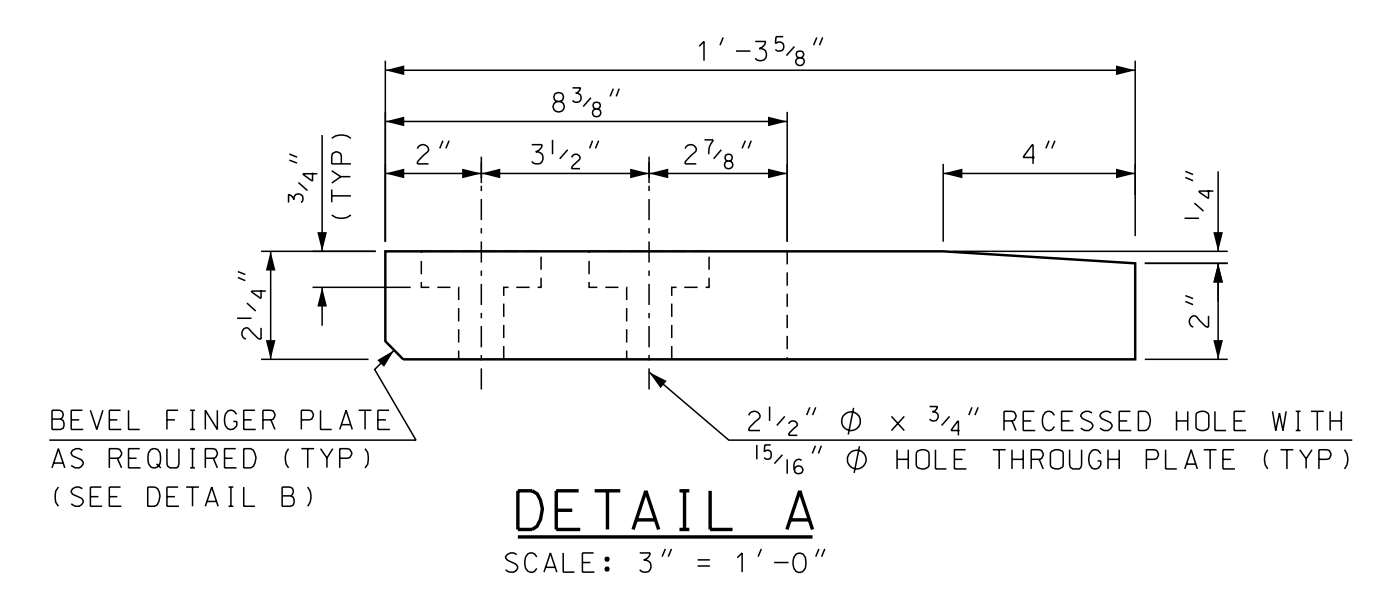
FINGER CUTTING DETAIL
SCALE: 1" = 1'-0"



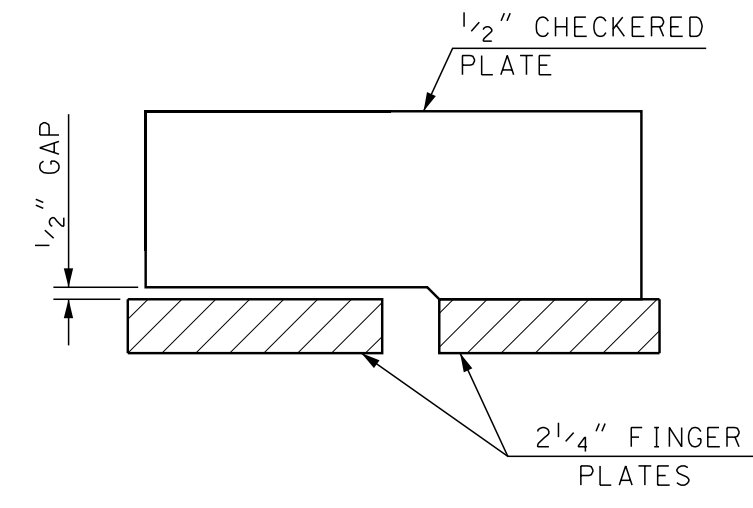
FINGER PLATE PLAN
SCALE: 1/2" = 1'-0"



FINGER PLATE PLAN
SCALE: 1/2" = 1'-0"

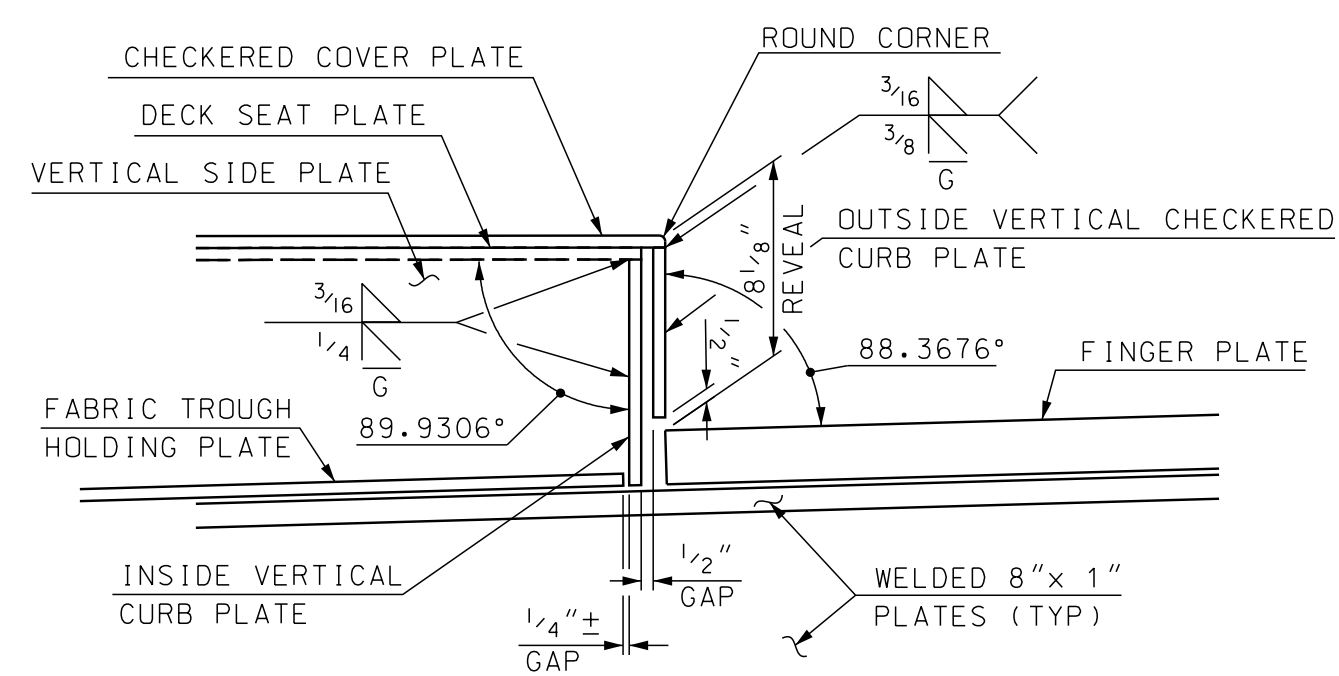


DETAIL A
SCALE: 3" = 1'-0"

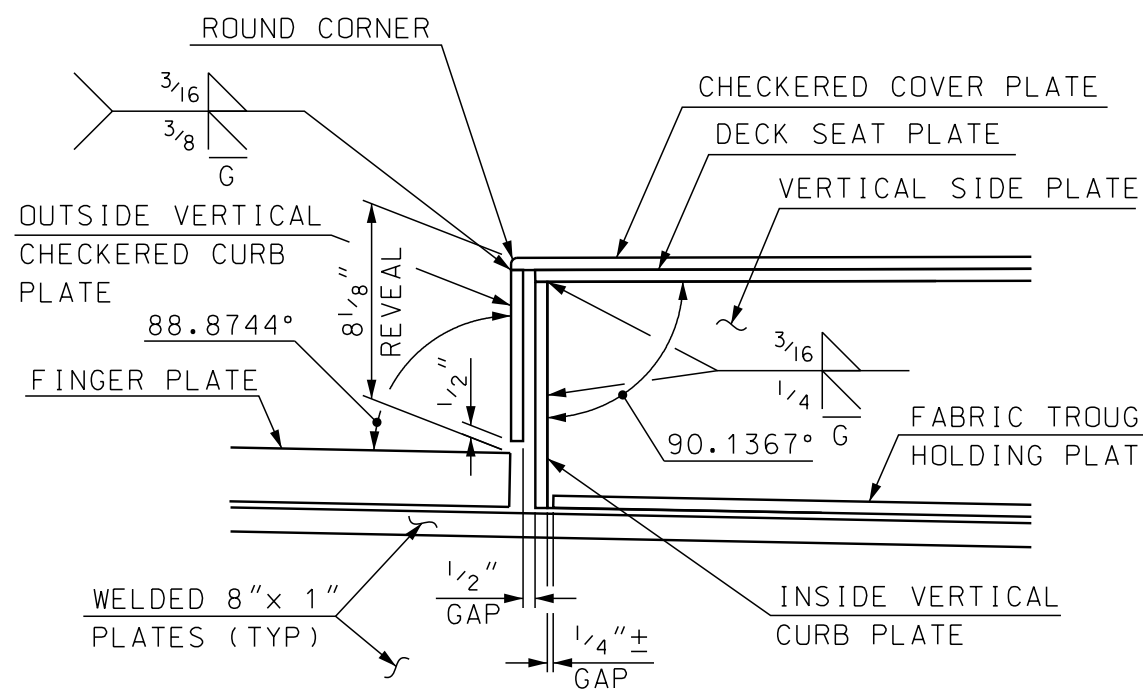


OUTSIDE VERTICAL CURB PLATE DETAIL
SCALE: 1 1/2" = 1'-0"

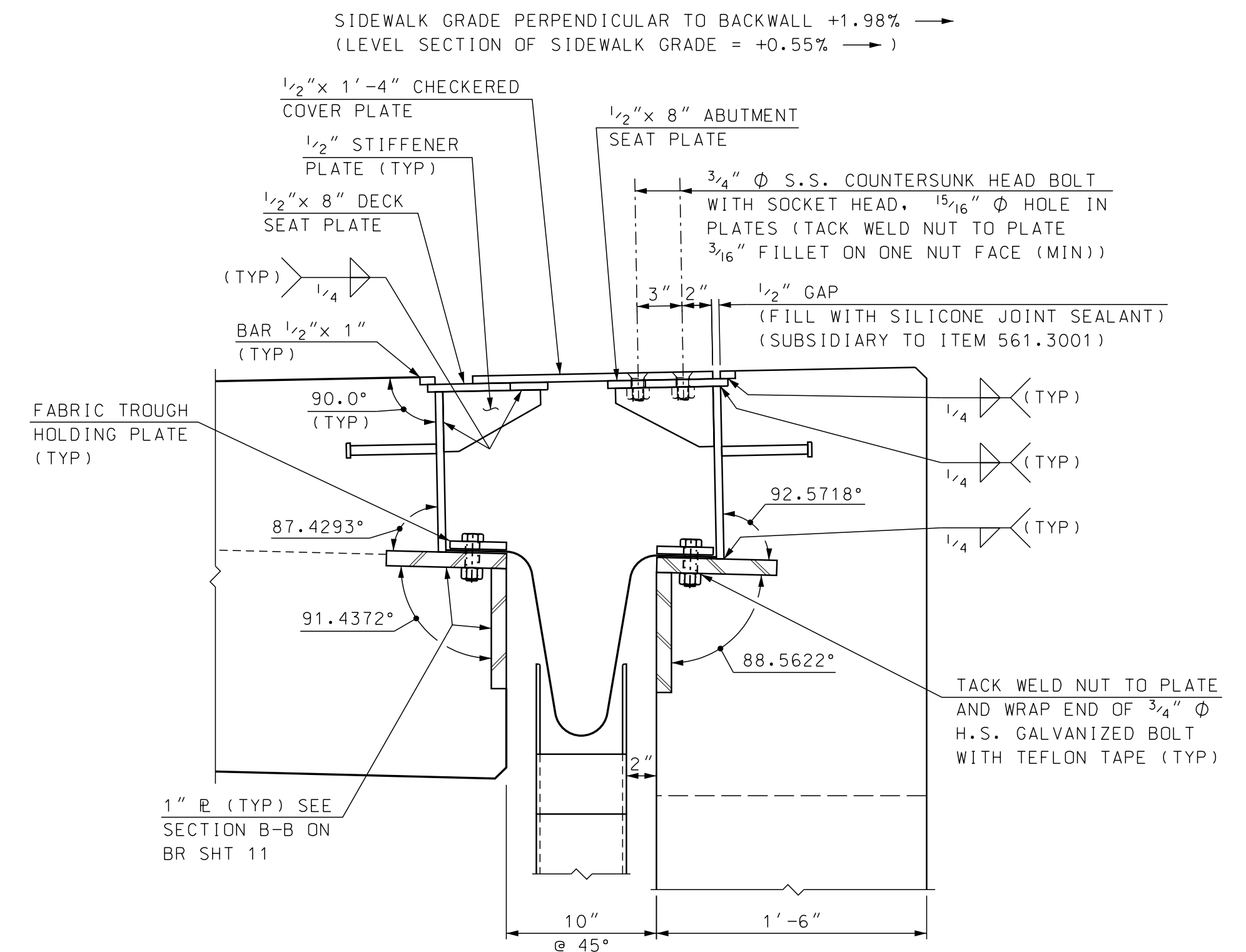
NOTE: DETAILS AND NOTES MAY NOT BE CURRENT. CLOSELY REVIEW BEFORE USING DETAILS.



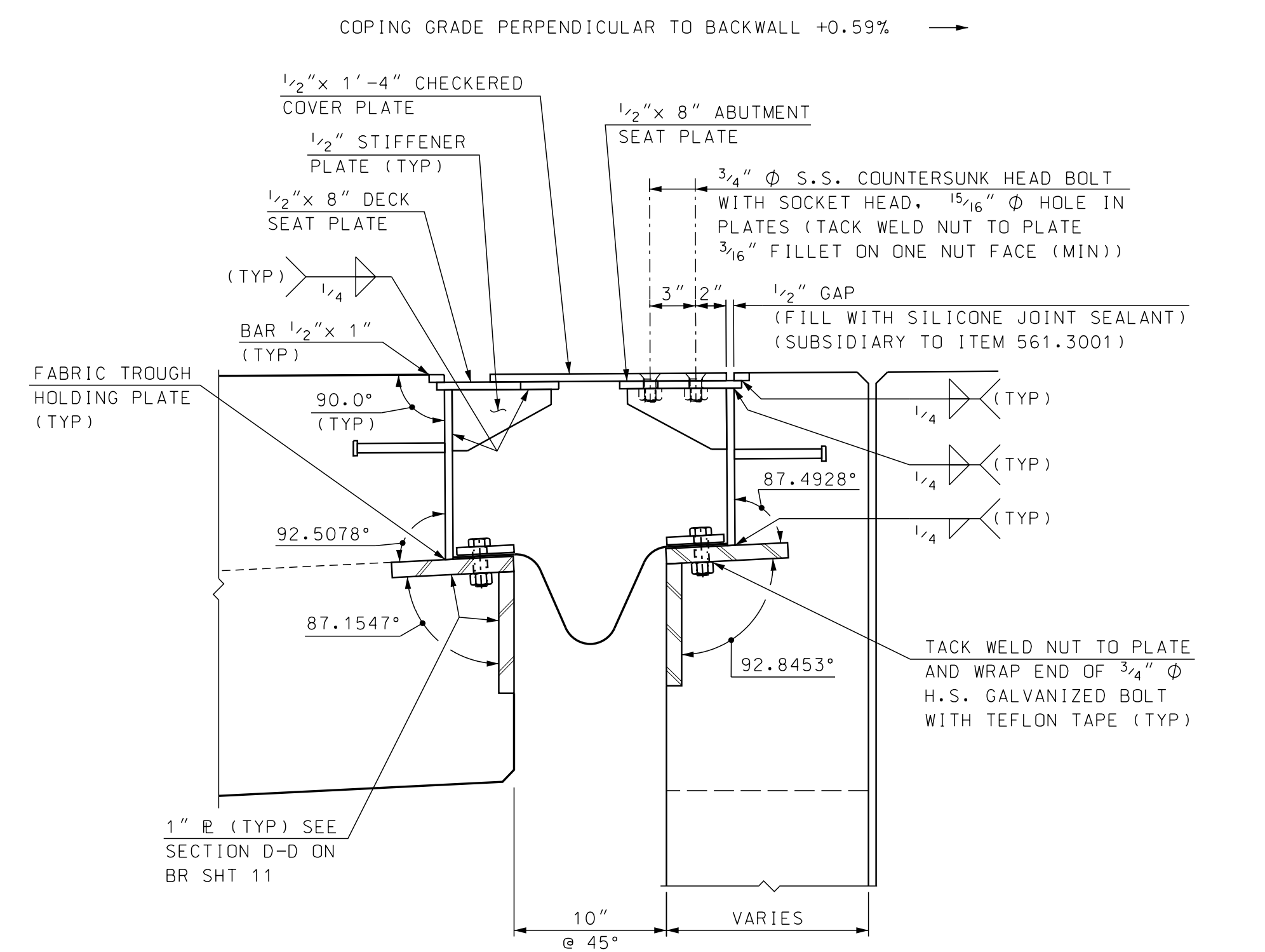
SIDEWALK CURB DETAIL
SCALE: 1 1/2" = 1'-0"



COPING CURB DETAIL
SCALE: 1 1/2" = 1'-0"



SECTION E-E
SCALE: 1 1/2" = 1'-0"



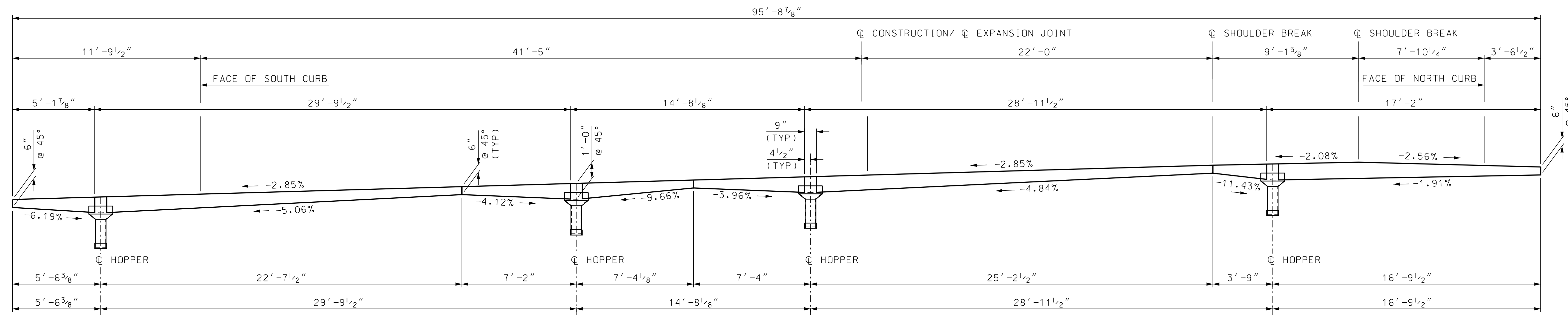
SECTION F-F
SCALE: 1 1/2" = 1'-0"

FOR LOCATIONS OF SECTIONS E-E AND F-F SEE BRIDGE SHEET 12.

SAMPLE PLAN
DATE: 9-2020

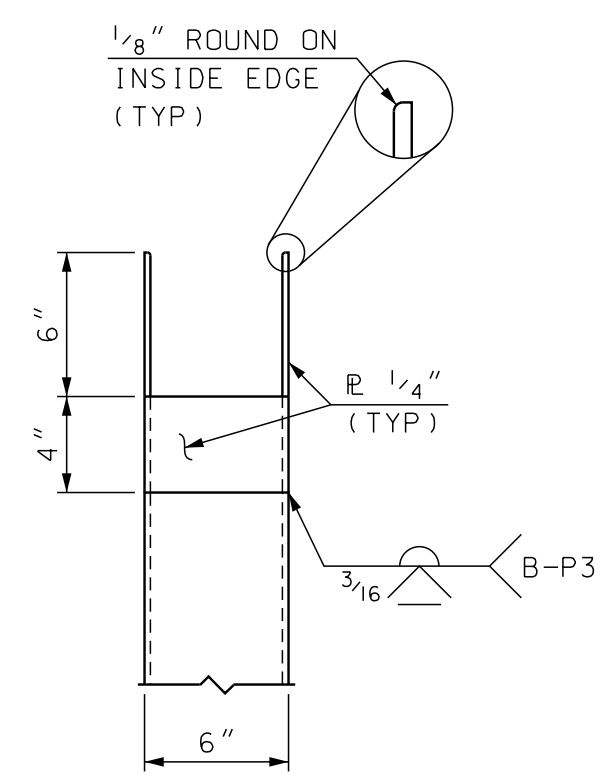
STATE OF NEW HAMPSHIRE												
DEPARTMENT OF TRANSPORTATION * BUREAU OF BRIDGE DESIGN												
TOWN	BETHLEHEM	BRIDGE NO.	125/177	STATE PROJECT	42501							
LOCATION	US ROUTE 302 & NH ROUTE 10 over AMMONOOSUC RIVER											
ABUT A FINGER EXP JT BR NO 125/177 (4 OF 5)						BRIDGE SHEET						
REVISIONS AFTER PROPOSAL						DESIGNED	JEH	3/20	CHECKED	ABH	7/20	13 OF 34
						DRAWN	GMC/SMG	3/20	CHECKED	ABH	7/20	FILE NUMBER
						QUANTITIES	JEH	8/20	CHECKED	PML	8/20	136-4-1
						ISSUE DATE	FEDERAL PROJECT NO.			SHEET NO.	TOTAL SHEETS	
						REV. DATE				17	38	

SUBDIRECTORY	DGN LOCATOR	SHEET SCALE
BRC/BETHLEHEM	42501 ABUT-AFingerJt	AS NOTED



☐ FABRIC DRAIN TROUGH PROFILE @ 45°

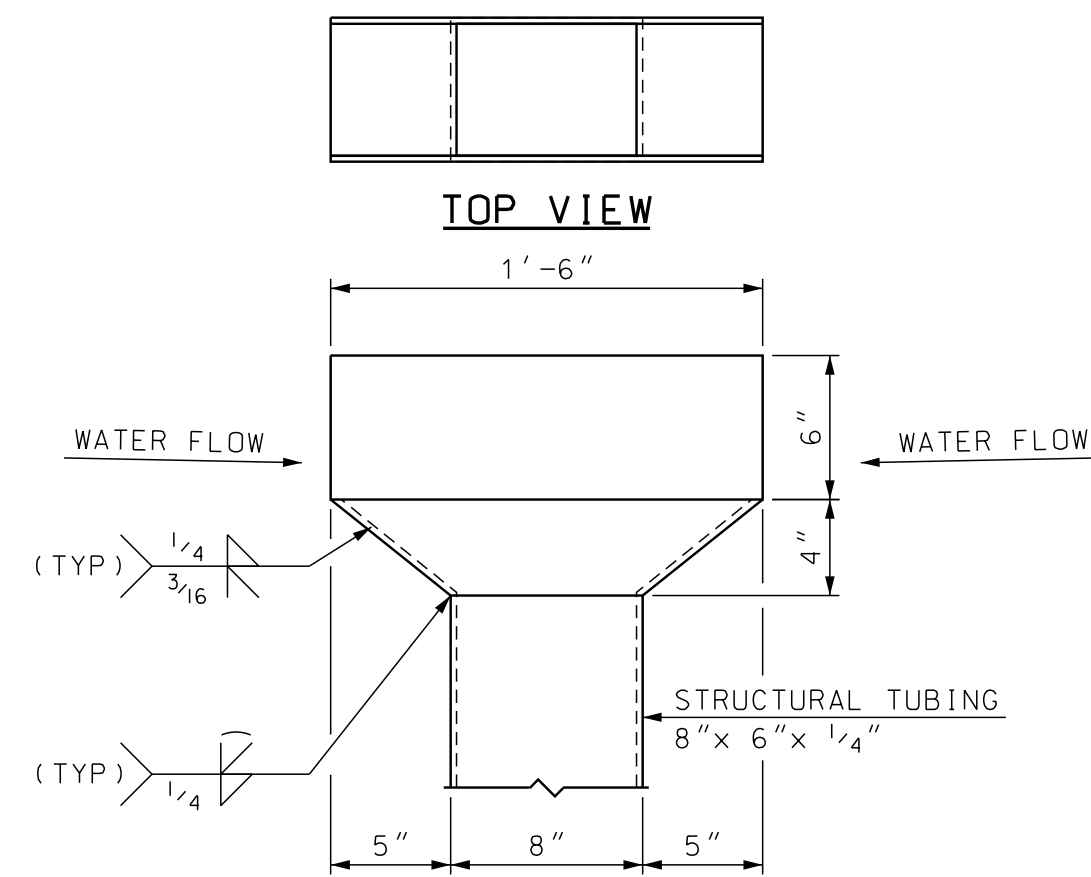
SCALE: 1/4" = 1'-0"



SIDE VIEW
2 WAY FLOW SHOWN
(1 WAY FLOW SIMILAR)

HOPPER DETAILS

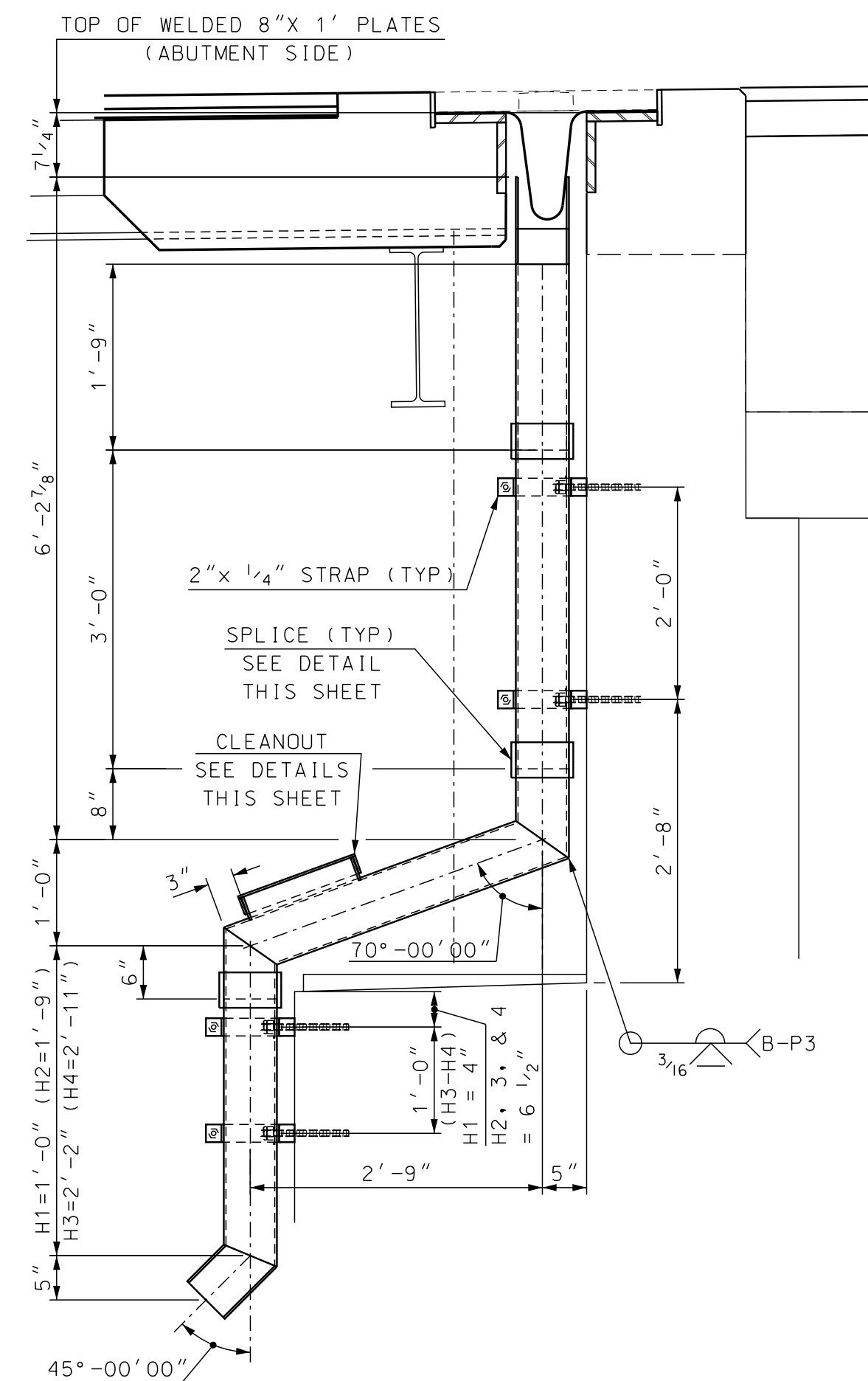
SCALE: 1 1/2" = 1'-0"



FRONT VIEW
2 WAY FLOW
(1 REQUIRED)

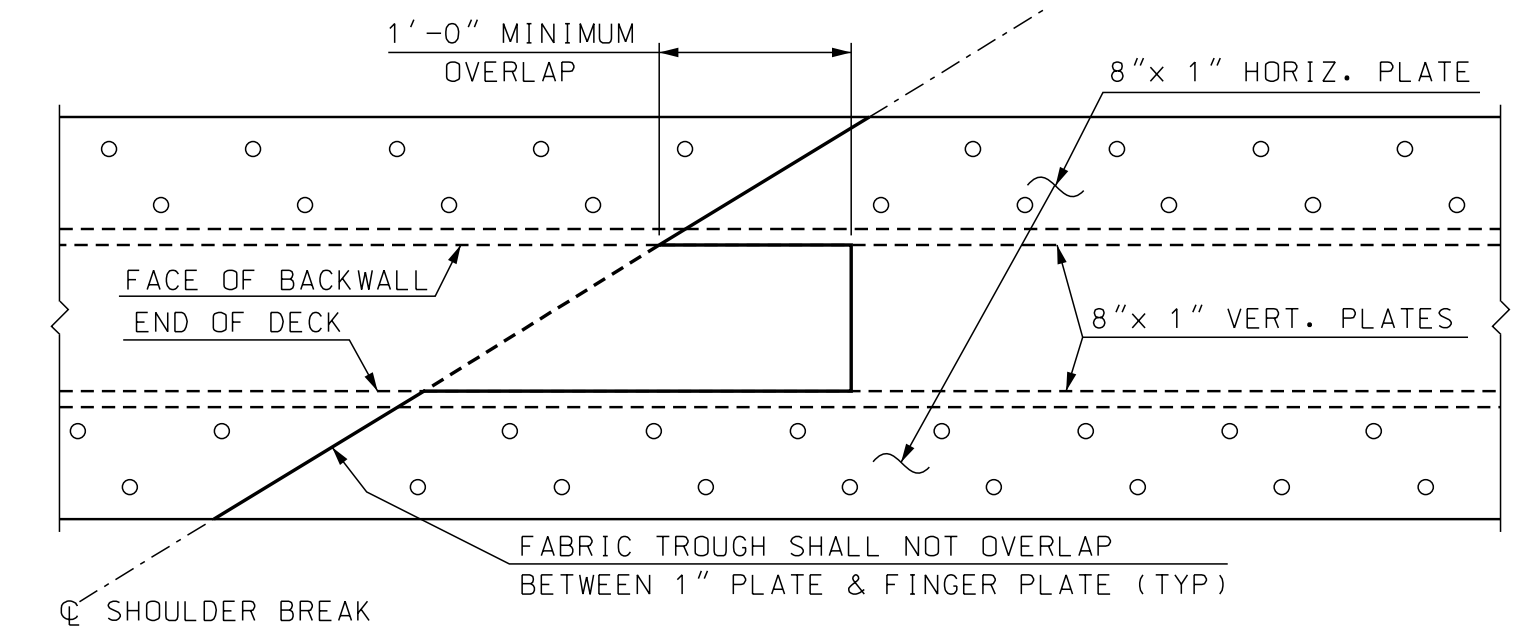
HOPPER DETAILS

SCALE: 1 1/2" = 1'-0"



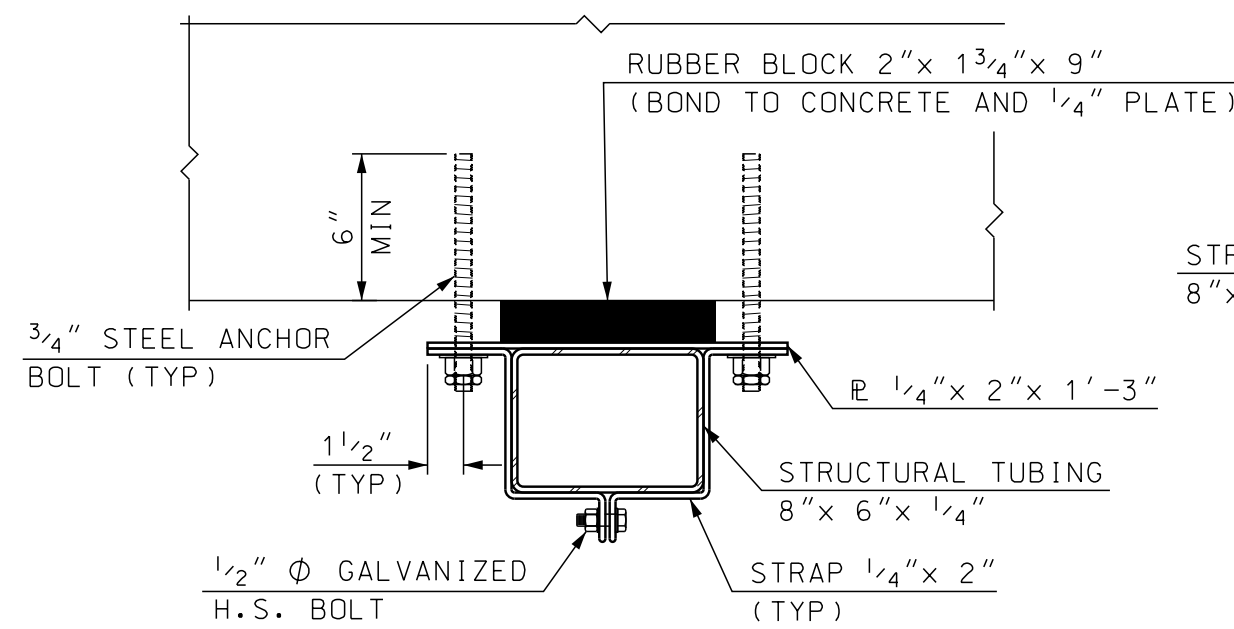
SECTION THRU ☐ OF HOPPER

SCALE: 3/4" = 1'-0"



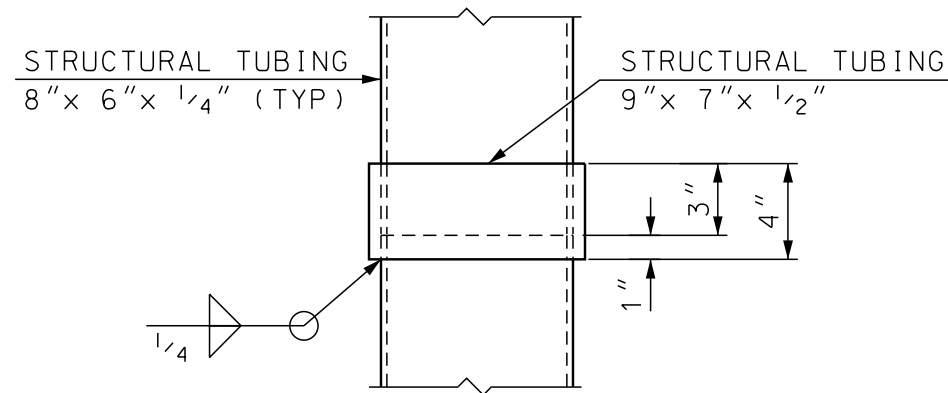
FABRIC TROUGH SPLICE

SCALE: 1" = 1'-0"



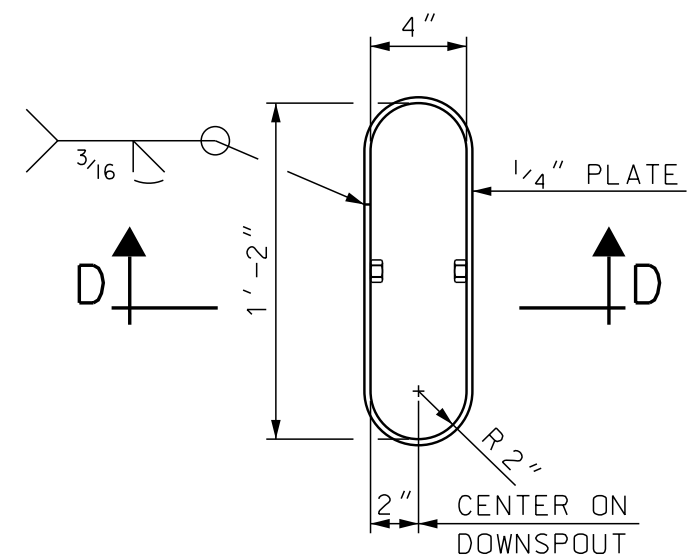
SECTION E-E

SCALE: 1 1/2" = 1'-0"



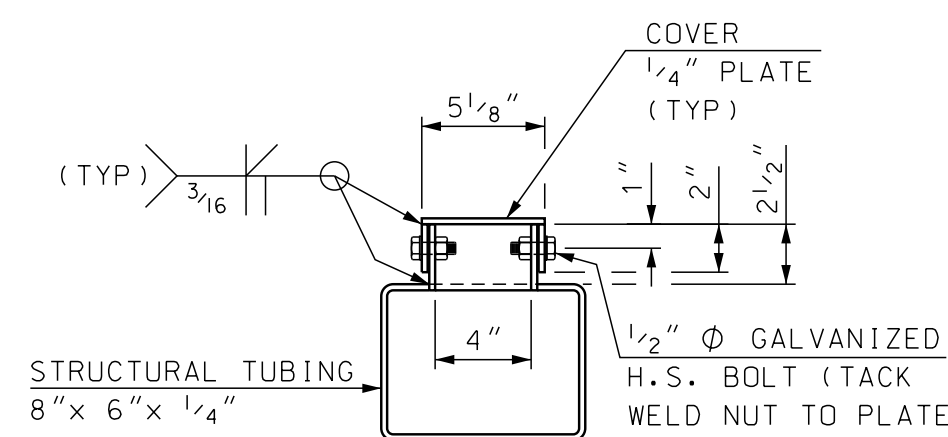
DOWNSPOUT SPLICE DETAIL

SCALE: 1 1/2" = 1'-0"



CLEANOUT DETAIL

SCALE: 1 1/2" = 1'-0"
(COVER REMOVED)



SECTION D-D

SCALE: 1 1/2" = 1'-0"

NOTE: DETAILS AND NOTES
MAY NOT BE CURRENT.
CLOSELY REVIEW BEFORE
USING DETAILS.

SAMPLE PLAN
DATE: 9-2020

STATE OF NEW HAMPSHIRE									
DEPARTMENT OF TRANSPORTATION * BUREAU OF BRIDGE DESIGN									
TOWN	BETHLEHEM	BRIDGE NO.	125/177	STATE PROJECT	42501				
LOCATION	US ROUTE 302 & NH ROUTE 10 over AMMONOOSUC RIVER								
ABUT A FINGER EXP JT BR NO 125/177 (5 OF 5)					BRIDGE SHEET				
REVISIONS AFTER PROPOSAL					14 OF 34				
DESIGNED	JEH	3/20	CHECKED	ABH	7/20	FILE NUMBER			
DRAWN	GMC/SMG	3/20	CHECKED	ABH	7/20	136-4-1			
QUANTITIES	JEH	8/20	CHECKED	PML	8/20				
ISSUE DATE	FEDERAL PROJECT NO.			SHEET NO.		TOTAL SHEETS			
REV. DATE	-----			18		38			

SUBDIRECTORY	DGN LOCATOR	SHEET SCALE
BRC/BETHLEHEM	42501 ABUT-AFingerJt	AS NOTED