

PLAN

SCALE: 1/2" = 1'-0"

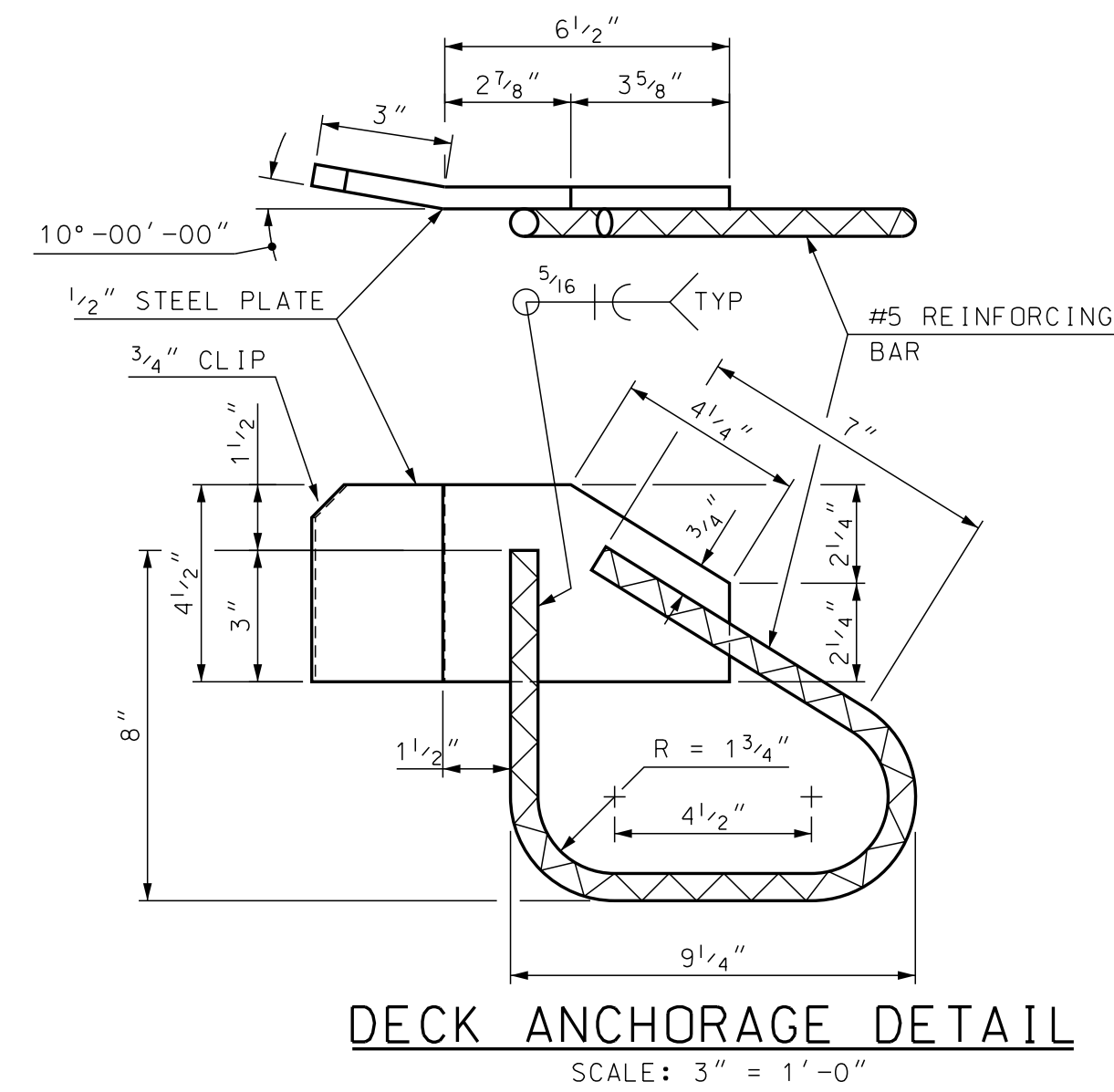
NOTES:

- FOR SECTION A-A, SEE BR SHT 25 FOR FURTHER DETAILS.
- ALL DIMENSIONS ALONG ABUTMENT ARE MEASURED HORIZONTALLY ALONG FACE OF BACKWALL.
- ALL ELEVATIONS AT FACE OF BACKWALL ARE 3/8" HIGHER THAN EXISTING 1986 PLANS (1/2" RAISE FROM MAINTENANCE WORK & 1/8" REDUCTION AT EXPANSION JOINT).

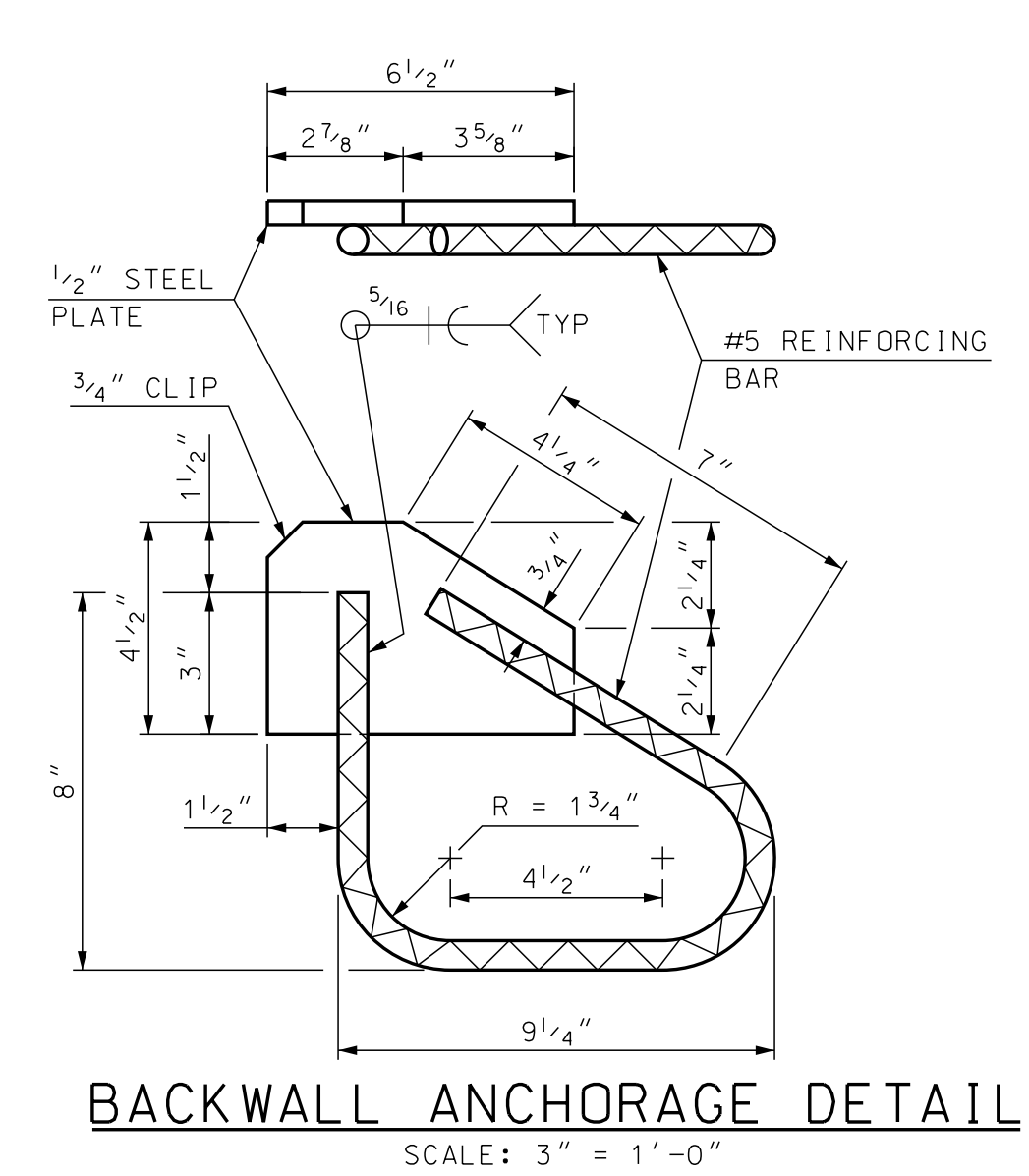
NOTE: DETAILS AND NOTES MAY NOT BE CURRENT. CLOSELY REVIEW BEFORE USING DETAILS.

EXPANSION JOINT NOTES

- ALL EXPANSION JOINT STEEL, INCLUDING ANCHORS, SHALL BE GALVANIZED. STEEL ANGLES SHALL BE ASTM A572 GRADE 50. MINOR STEEL PLATES MAY CONFORM TO ASTM A36. THE ENTIRE ASSEMBLY, INCLUDING COMPRESSION SEAL, SHALL BE PAID FOR AS ITEM 560.1001, PREFABRICATED COMPRESSION SEAL EXPANSION JOINT (F).
- SPLICES FOR STEEL ANGLES SHALL DEVELOP FULL STRENGTH.
- EXPANSION JOINT OPENING SHALL BE ADJUSTED TO TEMPERATURE ANTICIPATED JUST PRIOR TO POURING DECK BLOCKOUT. FINAL SETTING IN THE FIELD SHALL BE DETERMINED BY THE CONTRACT ADMINISTRATOR. SEE TEMPERATURE ADJUSTMENT TABLE & NOTES.
- THE COMPRESSION SEAL SHALL BE FURNISHED IN ONE CONTINUOUS LENGTH. NO SPLICES WILL BE ALLOWED. SEAL SHALL BE INSTALLED IN THE FIELD BY THE CONTRACTOR, IN ACCORDANCE WITH THE MANUFACTURER OF THE SEAL, USING AN APPROVED TOOL THAT WILL NOT DAMAGE THE SEAL.
- JOINT SUPPORT PLATES AND CURB PLATES SHALL BE SHOP WELDED TO EXPANSION JOINT STEEL AND SHALL BE NORMAL TO GRADE AFTER JOINT ASSEMBLY HAS BEEN ADJUSTED FOR ROADWAY CROSS-SLOPE AND GRADE. STEEL ANGLES SHALL BE ASSEMBLED WITH A CONSTANT JOINT OPENING TO ENSURE PROPER PERFORMANCE AND WATER TIGHTNESS.
- THE EXPANSION JOINT ASSEMBLY SHALL BE INSTALLED ONLY AFTER BOTH ABUTMENTS HAVE BEEN BACKFILLED TO WITHIN 3'-0" OF FINISHED GRADE.
- IMMEDIATELY AFTER THE JOINT HAS BEEN SECURED TO THE STRUCTURAL STEEL AND BACKWALL, REMOVE SHIPPING DEVICES AND GRIND SMOOTH ANY WELDS ON EXPOSED SURFACES. REPAIR ANY DAMAGE TO GALVANIZED SURFACES IN ACCORDANCE WITH SECTION 550.
- PROTECT TOP OF EXPANSION JOINT DURING PLACEMENT OF CONCRETE AND BITUMINOUS PAVEMENT.
- THE COMPRESSION SEAL HAS BEEN DESIGNED FOR A TOTAL FACTORED MOVEMENT OF 1.24 INCHES. DESIGN INCLUDES MOVEMENT DUE TO TEMPERATURE, SKEW, SHRINKAGE AND MINIMUM INSTALLATION WIDTH. THE CONTRACTOR SHALL USE A WA-400 SEAL BY WATSON BOWMAN OR CV-4000 BY D.S. BROWN, AS NOTED IN THE OPL.
- ELEVATIONS SHOWN AT TOP OF ANGLES ARE 1/8" LOWER THAN PROPOSED FINISHED ROADWAY GRADE.
- PRIOR TO INSTALLING THE SEAL, ALL TEMPORARY FORM WORK SHALL BE REMOVED. STEEL ANGLES AND STOP BARS SHALL BE MAINTAINED FREE FROM DIRT, WATER AND ANY OTHER LOOSE DEBRIS, WITH THE USE OF COMPRESSED AIR, TO ENSURE PROPER FIT OF THE SEAL. CARE SHALL BE TAKEN NOT TO DAMAGE GALVANIZED SURFACES.
- A TEMPORARY SEAL(S) SHALL BE INSTALLED PRIOR TO THE START OF THE WINTER MAINTENANCE PERIOD FOR ALL JOINT ASSEMBLIES OR PORTIONS THEREOF THAT WILL BE IN PLACE THROUGHOUT THE WINTER. ALL TEMPORARY SEALS SHALL BE REMOVED AND JOINT OPENINGS AND SUBSTRUCTURE SHALL BE CLEANED PRIOR TO INSTALLING THE FINAL SEAL. ALL COSTS SHALL BE SUBSIDIARY TO ITEM 560.1001.



DECK ANCHORAGE DETAIL
SCALE: 3" = 1'-0"

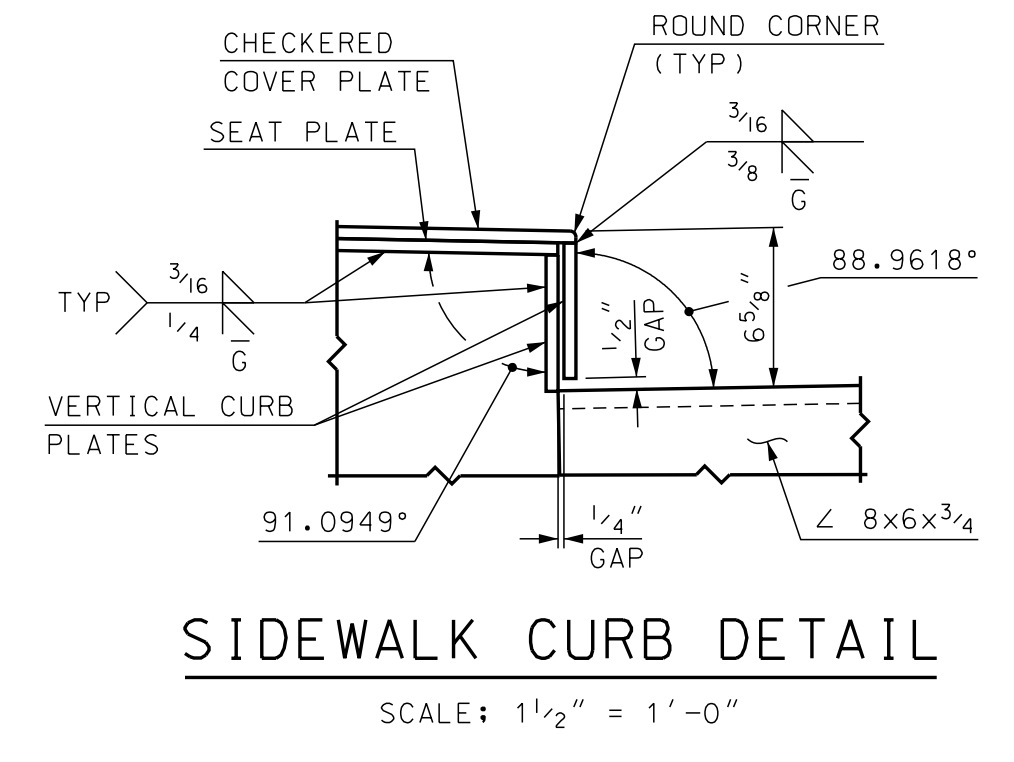
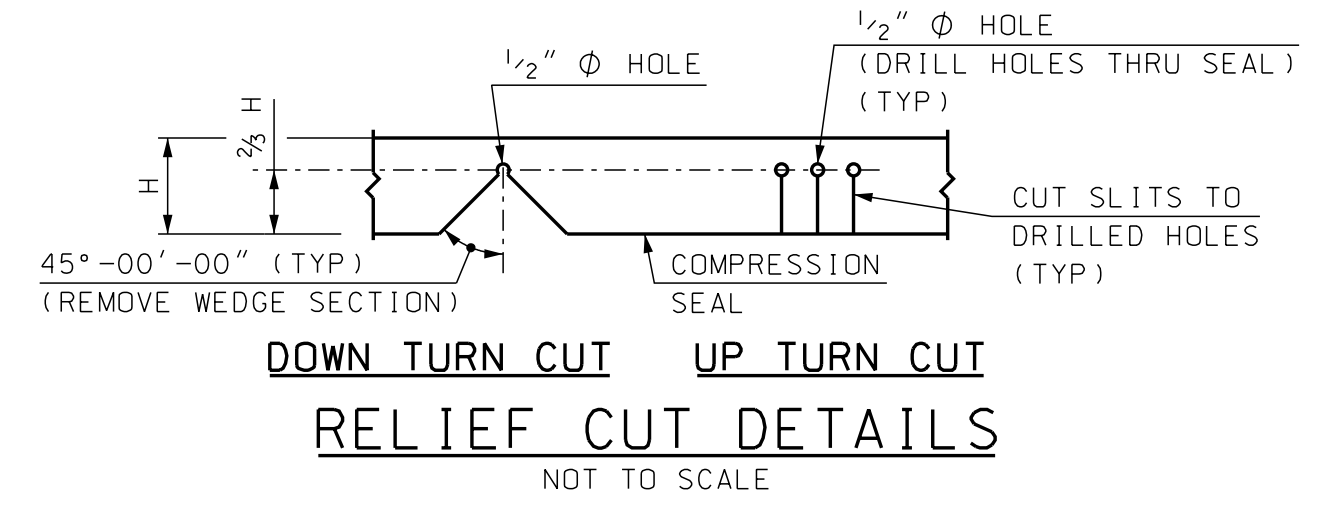
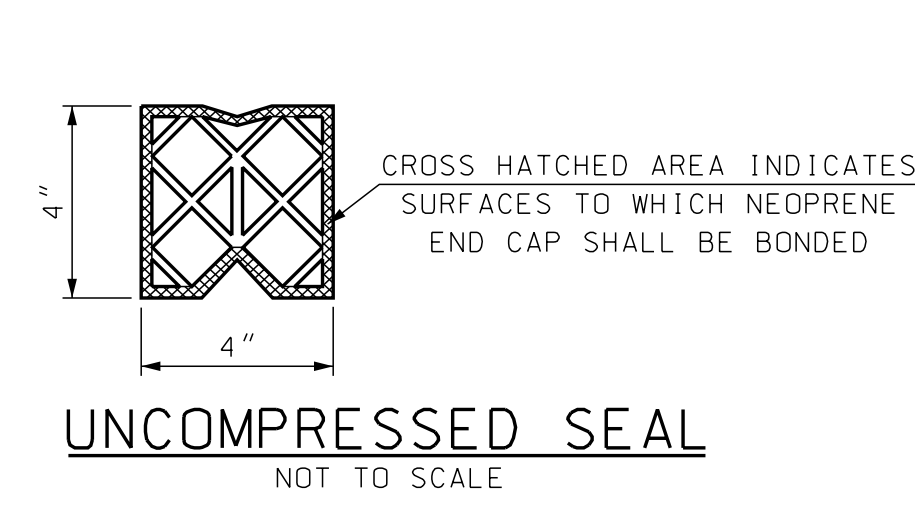
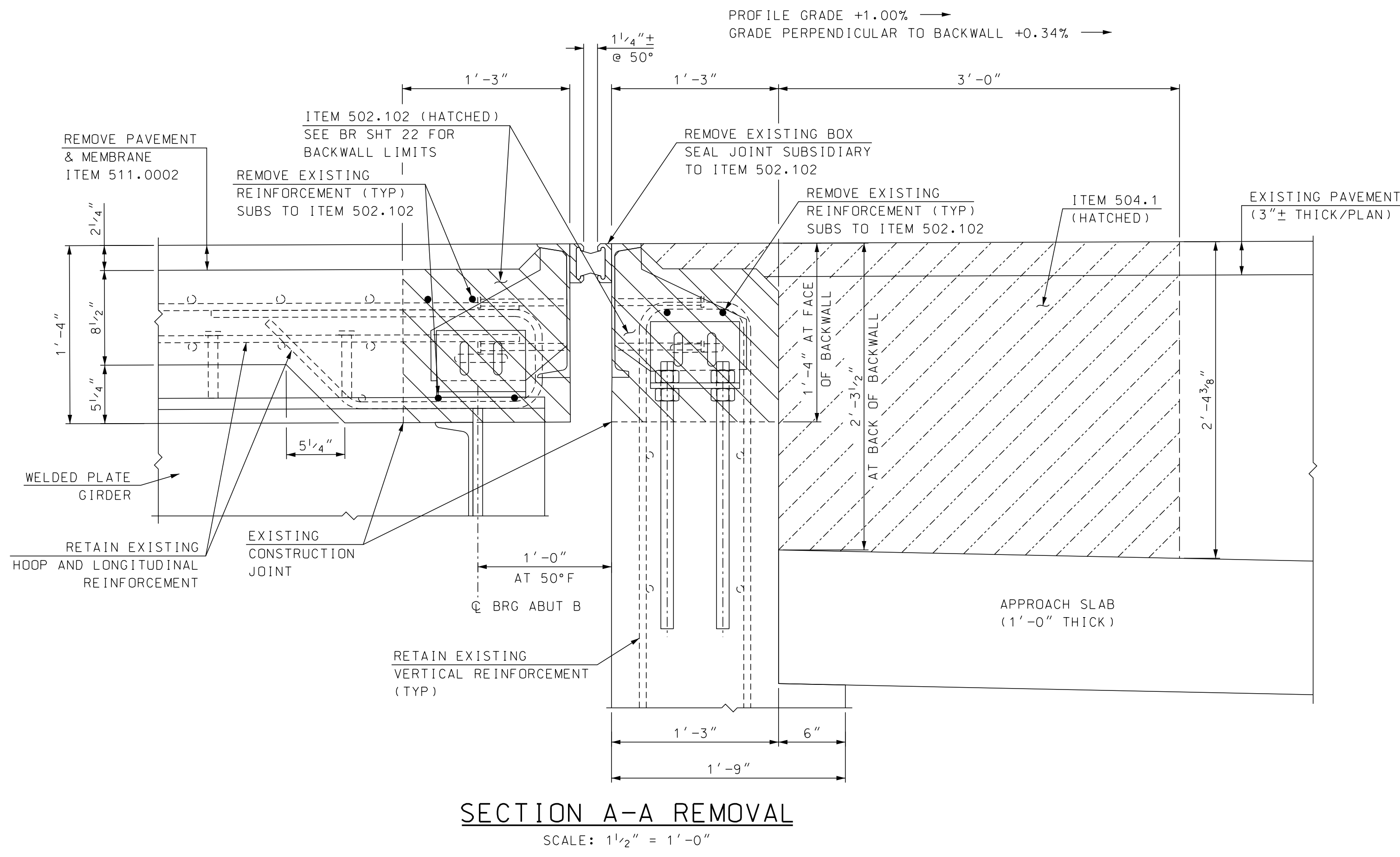


BACKWALL ANCHORAGE DETAIL
SCALE: 3" = 1'-0"

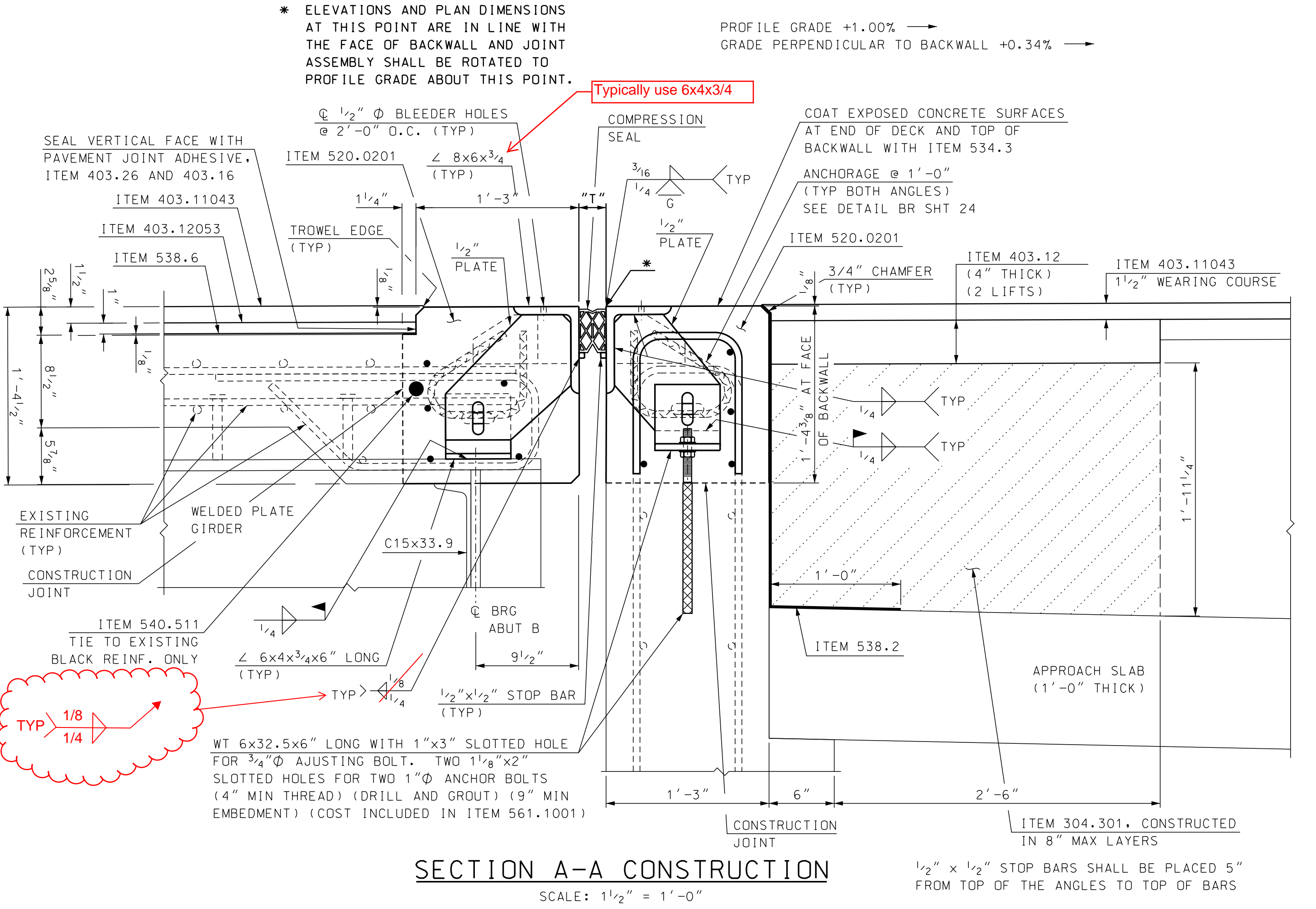
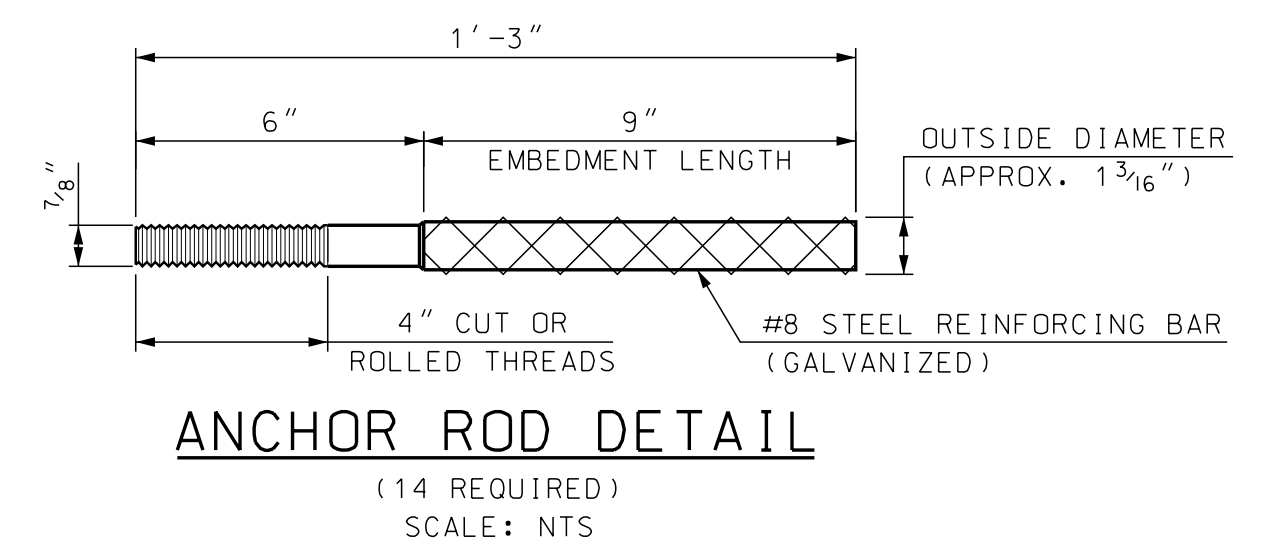
SAMPLE PLAN
DATE: 9-2020

STATE OF NEW HAMPSHIRE									
DEPARTMENT OF TRANSPORTATION * BUREAU OF BRIDGE DESIGN									
TOWN	CARROLL	BRIDGE NO.	173/141	STATE PROJECT	42501				
LOCATION US ROUTE 302 over AMMONOOSUC RIVER									
ABUT B COMP SEAL EXP JT BR NO 173/141 (1 of 4)						BRIDGE SHEET			
REVISIONS AFTER PROPOSAL						24 OF 34			
DESIGNED	JEH	8/20	CHECKED	ABH	7/20	FILE NUMBER			
DRAWN	SMG	3/20	CHECKED	ABH	7/20	136-4-1			
QUANTITIES	JEH	8/20	CHECKED	PML	8/20				
ISSUE DATE	FEDERAL PROJECT NO.			SHEET NO.		TOTAL SHEETS			
REV. DATE	-----			28		38			

SUBDIRECTORY	DGN LOCATOR	SHEET SCALE
BRC/CARROLL	173-141 Comp jt	AS NOTED



NOTE: DETAILS AND NOTES MAY NOT BE CURRENT. CLOSELY REVIEW BEFORE USING DETAILS.



TEMPERATURE ADJUSTMENT TABLE

TEMPERATURE	"T"
20°F	2 7/8"
35°F	2 3/4"
50°F	2 5/8"
65°F	2 1/2"
80°F	2 3/8"
95°F	2 1/4"

- TEMPERATURE ADJUSTMENT NOTES**
- "T" DIMENSIONS ARE PERPENDICULAR TO FACE OF BACKWALL.
 - MINIMUM "T" WIDTH FOR SEAL INSTALLATION = 2 1/2" (APPROXIMATELY 65°F OR LESS).
 - VALUES IN THE TEMPERATURE ADJUSTMENT TABLE ARE FOR SETTING THE EXPANSION JOINT ASSEMBLY IMMEDIATELY PRIOR TO POURING THE DECK BLOCKOUT.

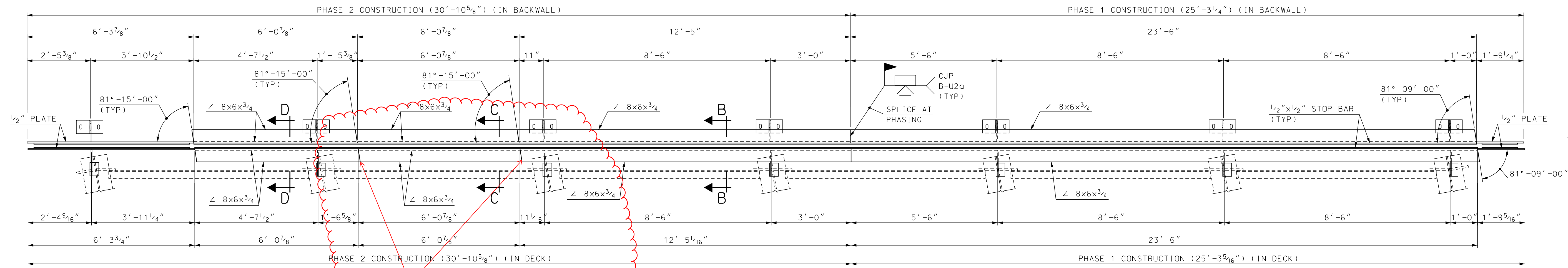
REVISIONS 12/30/20

SAMPLE PLAN
DATE: 9-2020

FOR LOCATION OF SECTION A-A SEE BRIDGE SHEET 24.

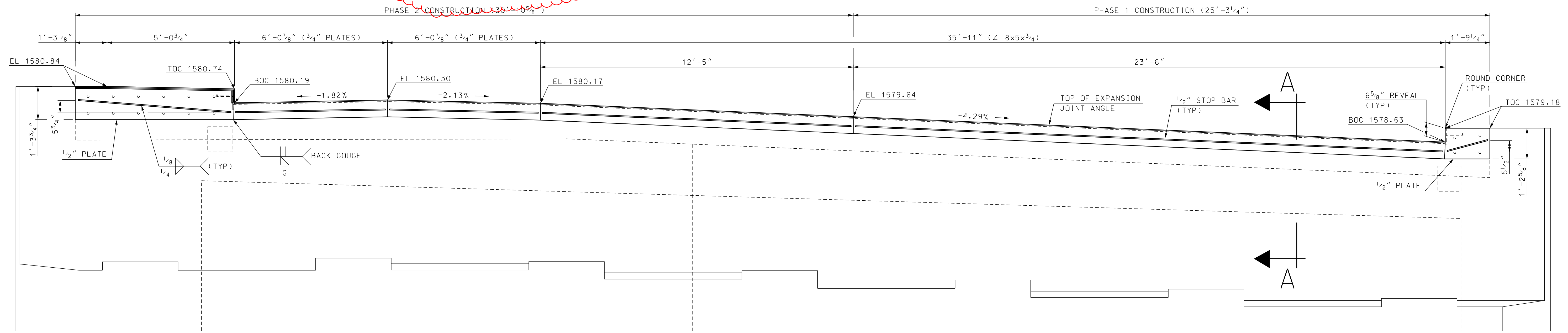
SUBDIRECTORY	DGN LOCATOR	SHEET SCALE
BRC/CARROLL	173-141 Comp jt	AS NOTED

STATE OF NEW HAMPSHIRE DEPARTMENT OF TRANSPORTATION * BUREAU OF BRIDGE DESIGN										
TOWN	CARROLL	BRIDGE NO.	173/141	STATE PROJECT	42501					
LOCATION						US ROUTE 302 over AMMONOOSUC RIVER				
ABUT B COMP SEAL EXP JT BR NO173/141 (2 of 4)										
REVISIONS AFTER PROPOSAL		BY	DATE	CHECKED	BY	DATE	BRIDGE SHEET			
		DESIGNED	JEH	3/20	CHECKED	ABH	7/20	25 OF 34		
		DRAWN	SMG	3/20	CHECKED	ABH	7/20	FILE NUMBER		
		QUANTITIES	JEH	8/20	CHECKED	PML	8/20	136-4-1		
		ISSUE DATE	FEDERAL PROJECT NO.			SHEET NO.		TOTAL SHEETS		
		REV. DATE	-----			29		38		



SUPPORT AND PLATE LAYOUT

SCALE: 1/2" = 1'-0"

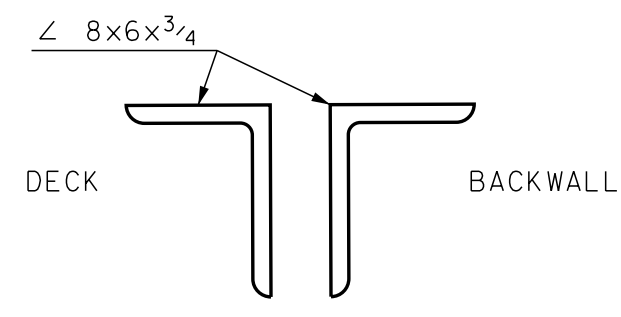


BACKWALL ELEVATION VIEW

SCALE: 1/2" = 1'-0"

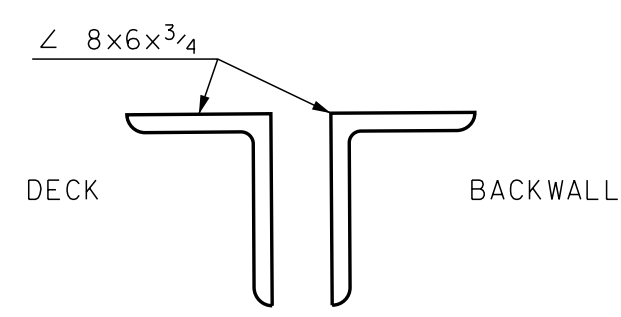
PROFILE GRADE +1.00% →
GRADE PERPENDICULAR TO BACKWALL +0.34% →

PROFILE GRADE +1.00% →
GRADE PERPENDICULAR TO BACKWALL +0.68% →



SECTION B-B

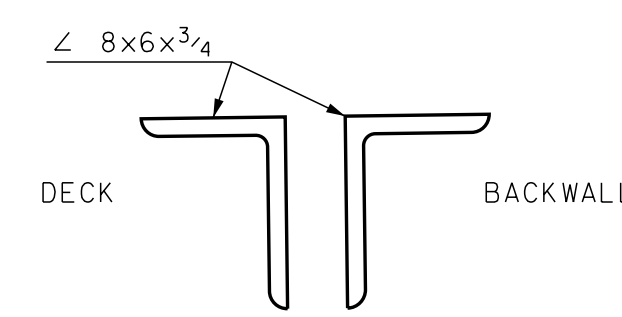
SCALE: 1 1/2" = 1'-0"



SECTION C-C

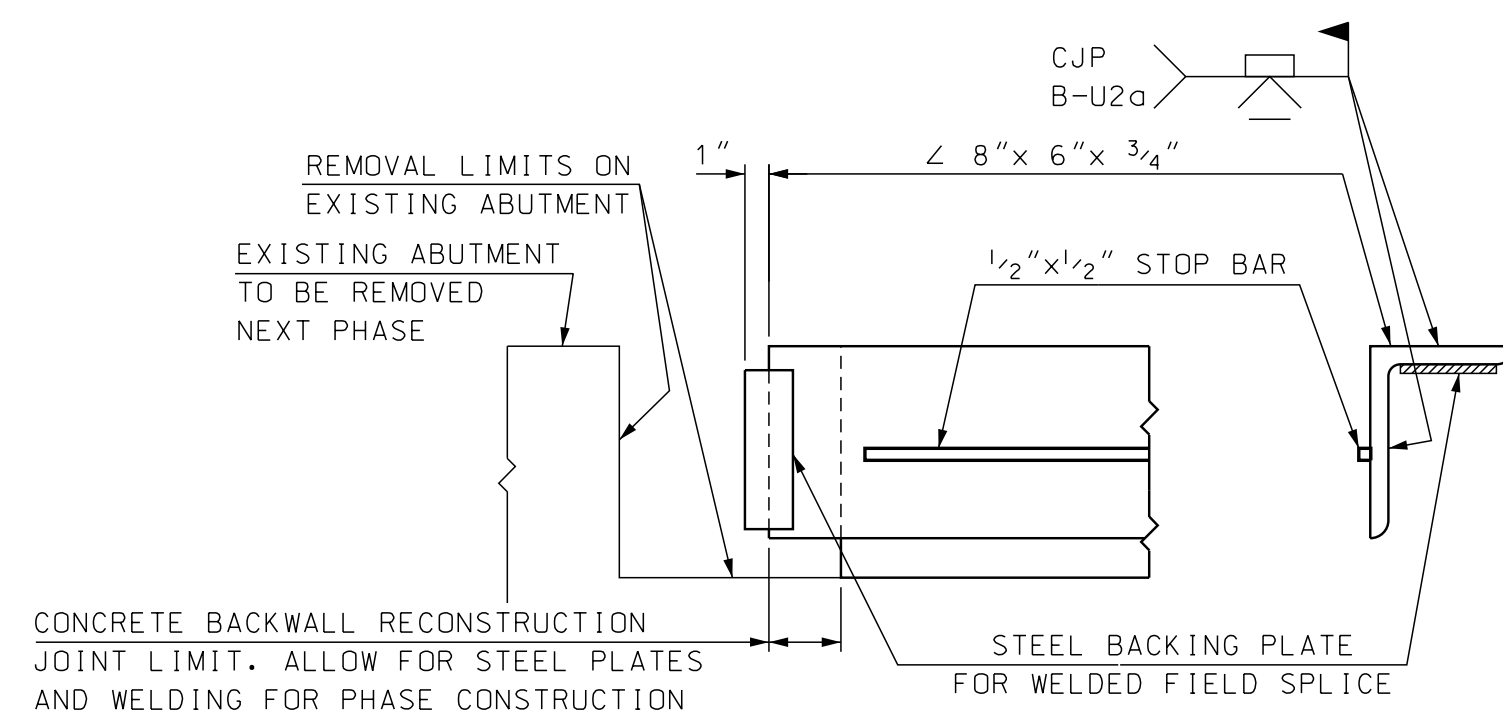
SCALE: 1 1/2" = 1'-0"

PROFILE GRADE +1.00% →
GRADE PERPENDICULAR TO BACKWALL +1.29% →



SECTION D-D

SCALE: 1 1/2" = 1'-0"



PHASE CONSTRUCTION FIELD WELD SPlice DETAILS

NOT TO SCALE

REVISIONS 12/30/20

SAMPLE PLAN

DATE: 9-2020

NOTE: DETAILS AND NOTES MAY NOT BE CURRENT. CLOSELY REVIEW BEFORE USING DETAILS.

- NOTES:
- FOR SECTION A-A, SEE BR SHT 25 FOR FURTHER DETAILS.
 - ALL DIMENSIONS ALONG ABUTMENT ARE MEASURED HORIZONTALLY ALONG FACE OF BACKWALL.
 - ALL ELEVATIONS AT FACE OF BACKWALL ARE 3/8" HIGHER THAN EXISTING 1986 PLANS (1/2" RAISE FROM MAINTENANCE WORK & 1/8" REDUCTION AT EXPANSION JOINT).

STATE OF NEW HAMPSHIRE									
DEPARTMENT OF TRANSPORTATION * BUREAU OF BRIDGE DESIGN									
TOWN	CARROLL	BRIDGE NO.	173/141	STATE PROJECT	42501				
LOCATION US ROUTE 302 over AMMONOOSUC RIVER									
ABUT B COMP SEAL EXP JT BR NO 173/141 (3 of 4)						BRIDGE SHEET			
REVISIONS AFTER PROPOSAL						26 OF 34			
DESIGNED	JEH	3/20	CHECKED	ABH	7/20	FILE NUMBER			
DRAWN	SMG	3/20	CHECKED	ABH	7/20	136-4-1			
QUANTITIES	JEH	8/20	CHECKED	PML	8/20	TOTAL SHEETS			
ISSUE DATE	FEDERAL PROJECT NO.			SHEET NO.		30			
REV. DATE	-----			30		38			

SUBDIRECTORY	DGN LOCATOR	SHEET SCALE
BRC/CARROLL	173-141 Comp jt	AS NOTED

