

THE NASHUA-MANCHESTER PASSENGER RAIL (CAPITOL CORRIDOR) PROJECT

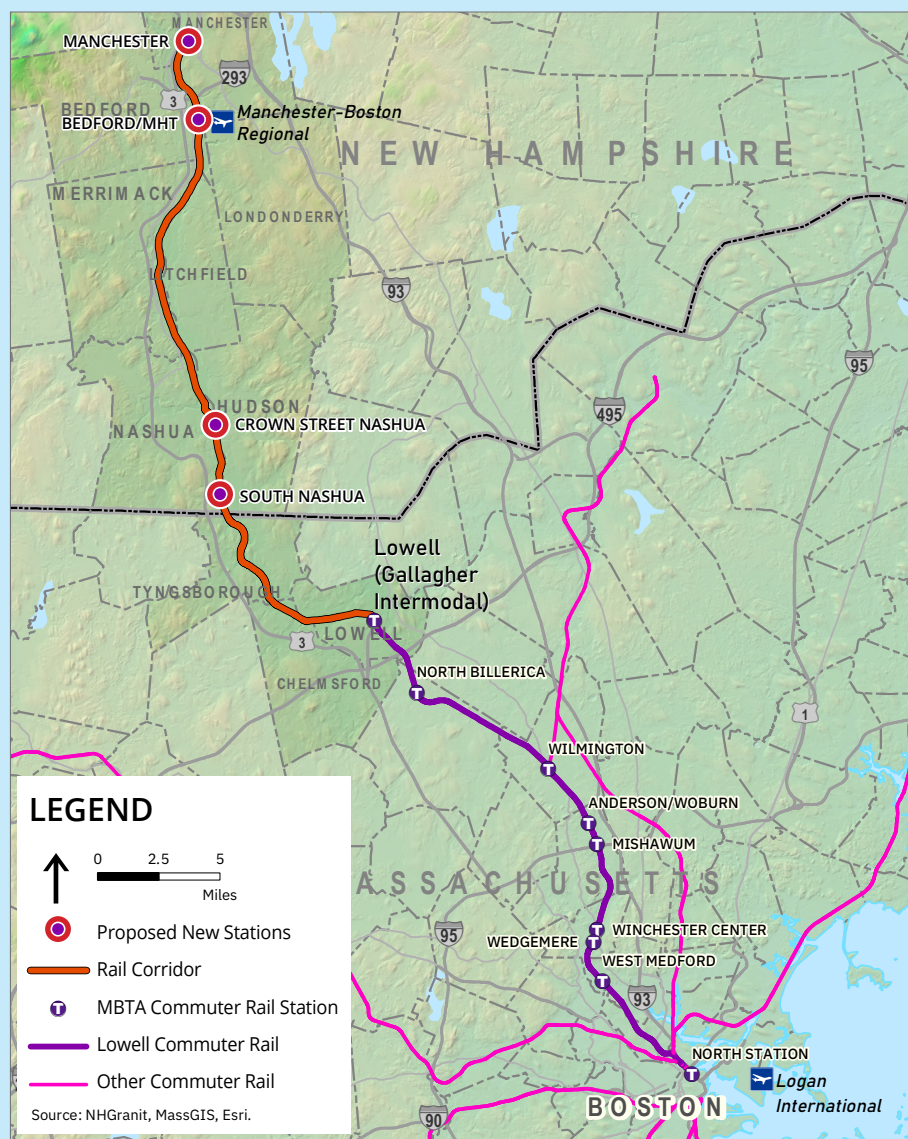
Summer 2021

What is the Nashua-Manchester Passenger Rail (Capitol Corridor) Project?

The Nashua-Manchester Passenger Rail (Capitol Corridor) Project extends the Massachusetts Bay Transportation Authority (MBTA) Commuter Rail service 30 miles from Lowell, Massachusetts to Manchester, New Hampshire. The proposed service will use approximately 10 miles of MBTA railway from Lowell, MA to Nashua, NH, and 20 miles of MBTA trackage rights on Pan Am Railways (Pan Am) Northern Branch northward into Manchester.

The project is currently in the development phase. Key steps to be completed in this phase include preliminary design engineering, State and Federal environmental review and development of the financial plan.

Where is the Project Located?



Project Goals



Transportation and Mobility: Leverage the existing transportation network to improve access and mobility within the corridor and throughout the region.



System Integration: Invest in transportation improvements that complement the existing multi-modal transportation network.



Economic Development and Land Use: Support the vision for growth laid out in local/regional development plans.



Sustainability: Support transportation investments that contribute to an environmentally, economically, and socially sustainable community.

Project Purpose

The purpose of the Nashua-Manchester project is to diversify mobility options that connect the Southern New Hampshire region with the population, employment, and commercial centers in the Greater Boston area, reduce congestion, emissions, and travel time, and provide mobility options that promote equity and support demographic trends and travel preferences in the project corridor.

Project Needs

- Provide an alternative to roadway congestion from projected population growth.
- Connect Southern New Hampshire's transportation network to existing modes.
- Invest in transportation infrastructure that provides additional travel options for passengers and goods.
- Improve transportation options to attract employers to New Hampshire and improve employment options for New Hampshire residents.
- Improve transit connectivity to support attraction and retention of residents in the project area.
- Provide alternatives to passenger vehicle travel as aging workers and retirees become less willing or able to confront congestion on the regional roadway network.
- Invest in transit-oriented development in targeted areas adjacent to rail corridor infrastructure.
- Invest in multi-modal alternatives to passenger use to reduce emissions and fuel consumption.

Infrastructure and Service Features of the Project

- ✓ Approximately 30-miles of upgraded track
- ✓ Signal system upgrades with Positive Train Control (PTC)
- ✓ Four new passenger stations and one new layover facility
- ✓ Upgraded rail bridges and at-grade crossings
- ✓ Commuter rail service frequency comparable to existing MBTA Lowell Line

Financial Plan

A feasible and sustainable financial plan is central to the success of the project. Building upon prior work, the financial plan will explore alternative funding sources, cost-sharing with Massachusetts, financing mechanisms, and opportunities for private sector participation. The plan will assess the potential for Transit-Oriented Development (TOD) to generate value capture to help pay for related project costs, such as the stations and the surrounding land use.

For More Info

 nhcapitolcorridor@fhstudio.com

 www.nh.gov/dot/projects/nashuamanchester40818/index.htm

Project Timeline

