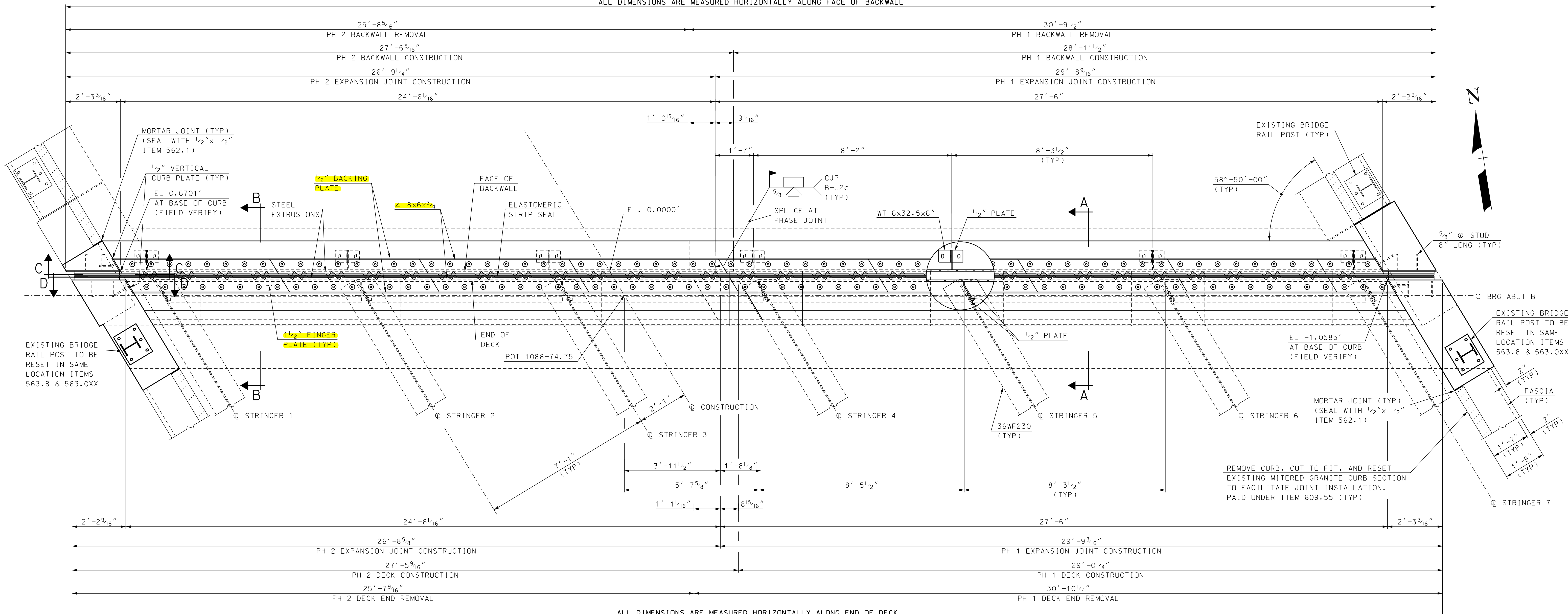


ALL DIMENSIONS ARE MEASURED HORIZONTALLY ALONG FACE OF BACKWALL



PLAN VIEW

SCALE: 1/2" = 1'-0"

EXPANSION JOINT NOTES

- (1) ALL EXPANSION JOINT STEEL, INCLUDING ANCHORS, SHALL BE GALVANIZED. STEEL ANGLES SHALL BE ASTM A572 GRADE 50. MINOR STEEL PLATES MAY CONFORM TO ASTM A36. THE ENTIRE ASSEMBLY, INCLUDING STRIP SEAL, SHALL BE PAID FOR AS ITEM 561.1201, PREFABRICATED STRIP SEAL EXPANSION JOINT W/PLOW PLATES (F).
- (2) SPLICES FOR STEEL ANGLES SHALL DEVELOP FULL STRENGTH.
- (3) EXPANSION JOINT OPENING SHALL BE ADJUSTED TO TEMPERATURE ANTICIPATED JUST PRIOR TO POURING DECK BLOCKOUT. FINAL SETTING IN THE FIELD SHALL BE DETERMINED BY THE CONTRACT ADMINISTRATOR. SEE TEMPERATURE ADJUSTMENT TABLE & NOTES.
- (4) STRIP SEAL SHALL BE FURNISHED IN ONE CONTINUOUS LENGTH. NO SPLICES WILL BE ALLOWED. SEAL SHALL BE INSTALLED IN THE FIELD BY THE CONTRACTOR, IN ACCORDANCE WITH THE MANUFACTURER OF THE SEAL, USING AN APPROVED TOOL THAT WILL NOT DAMAGE THE SEAL.
- (5) JOINT SUPPORT PLATES AND CURB PLATES SHALL BE SHOP WELDED TO EXPANSION JOINT STEEL AND SHALL BE NORMAL TO GRADE AFTER JOINT ASSEMBLY HAS BEEN ADJUSTED FOR ROADWAY CROSS-SLOPE AND GRADE. STEEL ANGLES AND EXTRUSIONS SHALL BE ASSEMBLED WITH A CONSTANT JOINT OPENING TO ENSURE PROPER PERFORMANCE AND WATER TIGHTNESS.
- (6) IMMEDIATELY AFTER THE JOINT HAS BEEN SECURED TO THE STRUCTURAL STEEL, REMOVE SHIPPING DEVICES AND GRIND SMOOTH ANY WELDS ON EXPOSED SURFACES. REPAIR ANY DAMAGE TO GALVANIZED SURFACES IN ACCORDANCE WITH SECTION 550.
- (7) PROTECT TOP OF EXPANSION JOINT DURING PLACEMENT OF CONCRETE AND BITUMINOUS PAVEMENT.

- (8) THE STRIP SEAL HAS BEEN DESIGNED FOR A TOTAL FACTORED MOVEMENT OF 1.05 INCHES. DESIGN INCLUDES MOVEMENT DUE TO TEMPERATURE, SKEW, SHRINKAGE AND MINIMUM INSTALLATION WIDTH. THE CONTRACTOR SHALL USE AN SE-400 SEAL BY WATSON BOWMAN OR A2R-400 BY D.S. BROWN, AS NOTED IN THE OPL.
- (9) ELEVATIONS SHOWN AT TOP OF ANGLES ARE 1/8" LOWER THAN PROPOSED FINISHED ROADWAY GRADE.
- (10) NO "LOW PROFILE" STEEL EXTRUSIONS SHALL BE ALLOWED. SEE OPL FOR APPROVED PRODUCTS.
- (11) PRIOR TO INSTALLING THE SEAL, ALL TEMPORARY FORM WORK SHALL BE REMOVED. STEEL ANGLES AND EXTRUSIONS SHALL BE MAINTAINED FREE FROM DIRT, WATER AND ANY OTHER LOOSE DEBRIS, WITH THE USE OF COMPRESSED AIR, TO ENSURE PROPER FIT OF THE SEAL. CARE SHALL BE TAKEN NOT TO DAMAGE GALVANIZED SURFACES.

NOTE: DETAILS AND NOTES MAY NOT BE CURRENT. CLOSELY REVIEW BEFORE USING DETAILS.

NOTE:
PROPOSED EXPANSION JOINT AND CONCRETE ARMORING TO BE SET TO ACCOMMODATE 1/2" CHANGE IN FINISHED GRADE IN PHASE 3 CONSTRUCTION (SEE BR SHT XX).

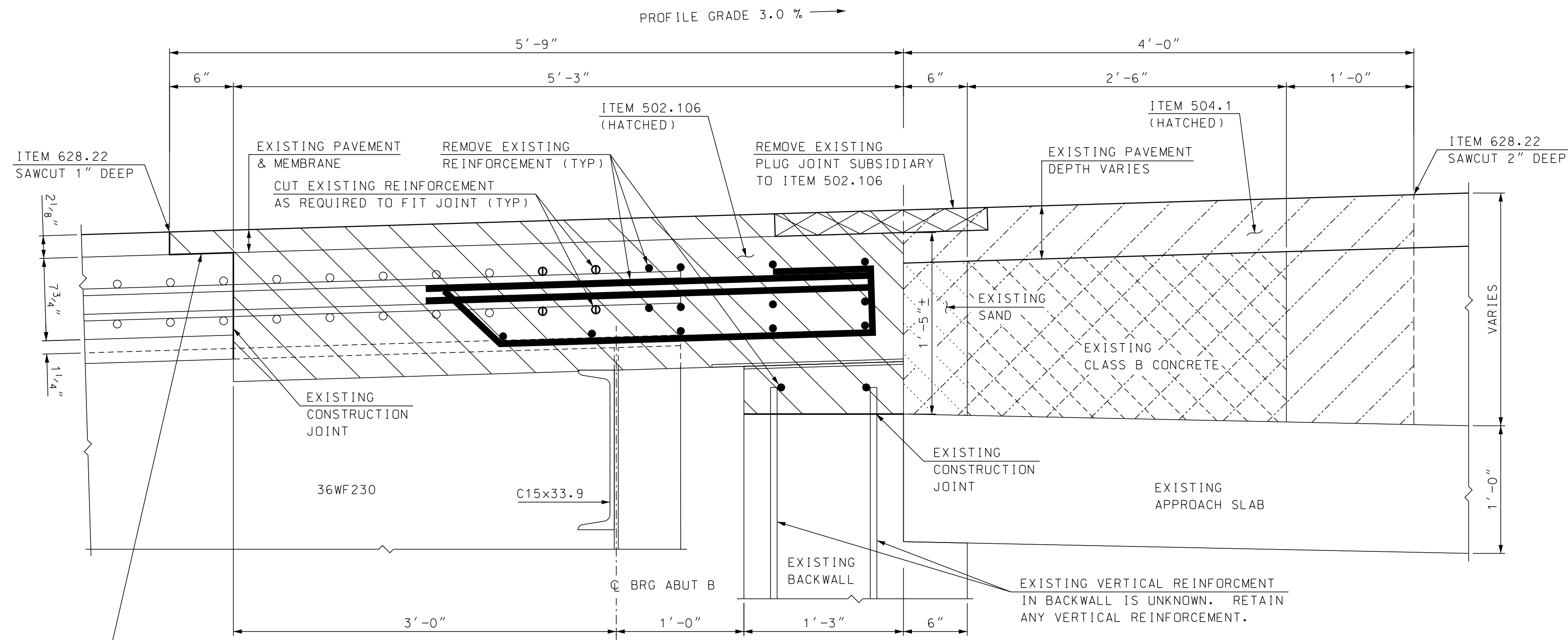
FOR SECTIONS A-A THROUGH D-D SEE BRIDGE SHEET XX.

SAMPLE PLAN

DATE: 05-2018

SUBDIRECTORY	DGN LOCATOR	SHEET SCALE
5 NH Route 103 Warner Plow Plate NB164-104 B	AS NOTED	

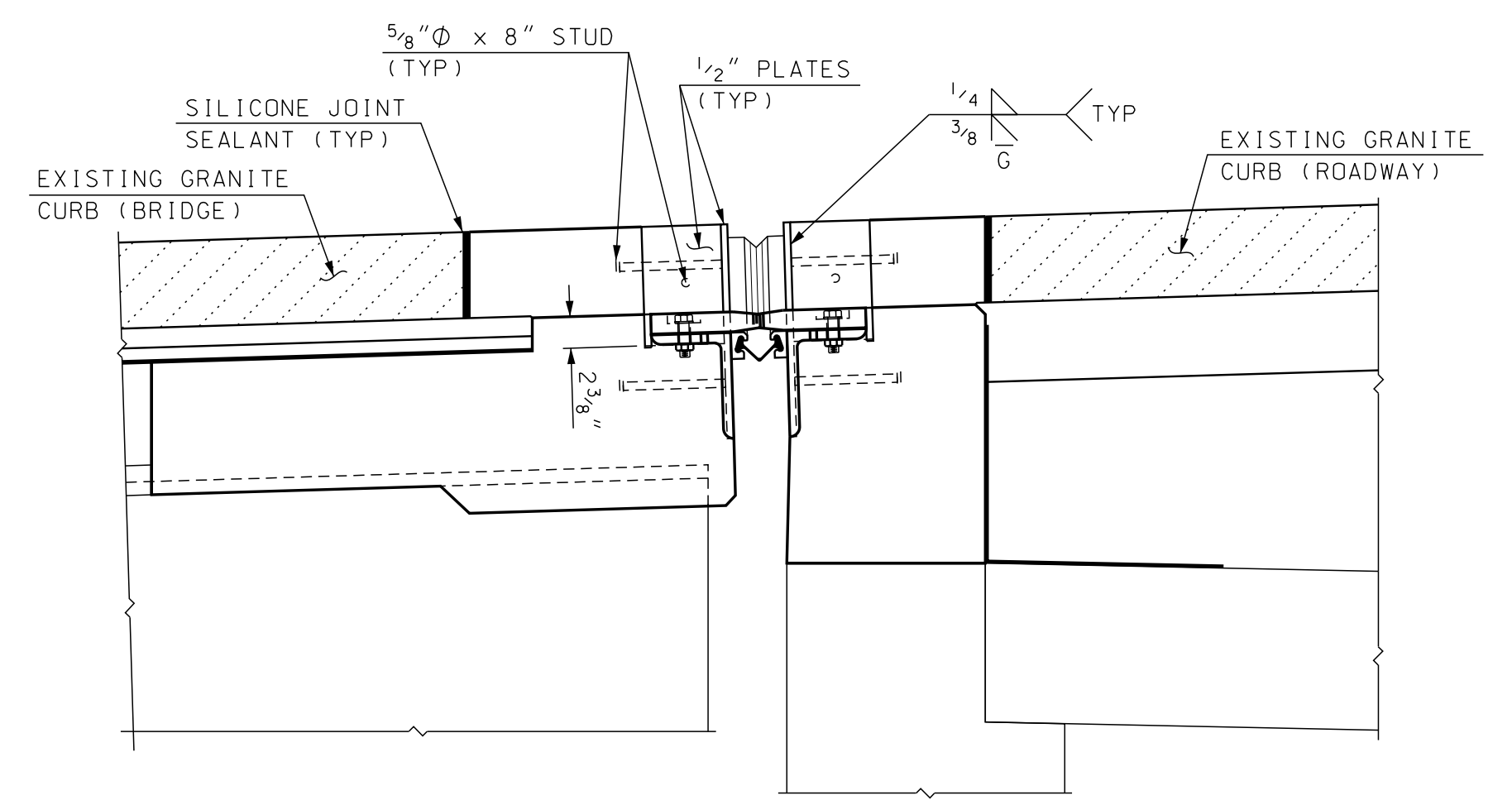
STATE OF NEW HAMPSHIRE									
DEPARTMENT OF TRANSPORTATION * BUREAU OF BRIDGE DESIGN									
TOWN	WARNER	BRIDGE NO.	164/104	STATE PROJECT	XX				
LOCATION 1-89 NORTHBOUND over N.H. ROUTE 103 (INTERSTATE BR. #27)									
ABUT B STRIP SEAL EXP JT W/PLOW PLATES (1 OF 3)									
REVISIONS AFTER PROPOSAL		BY		DATE		BY		DATE	
		DESIGNED	SMG	5/18	CHECKED	X	X	BRIDGE SHEET	
		DRAWN	SMG	5/18	CHECKED	X	X	X OF XX	
		QUANTITIES	X	X	CHECKED	X	X	FILE NUMBER	
		ISSUE DATE		FEDERAL PROJECT NO.		SHEET NO.		TOTAL SHEETS	
		REV. DATE				1		1	



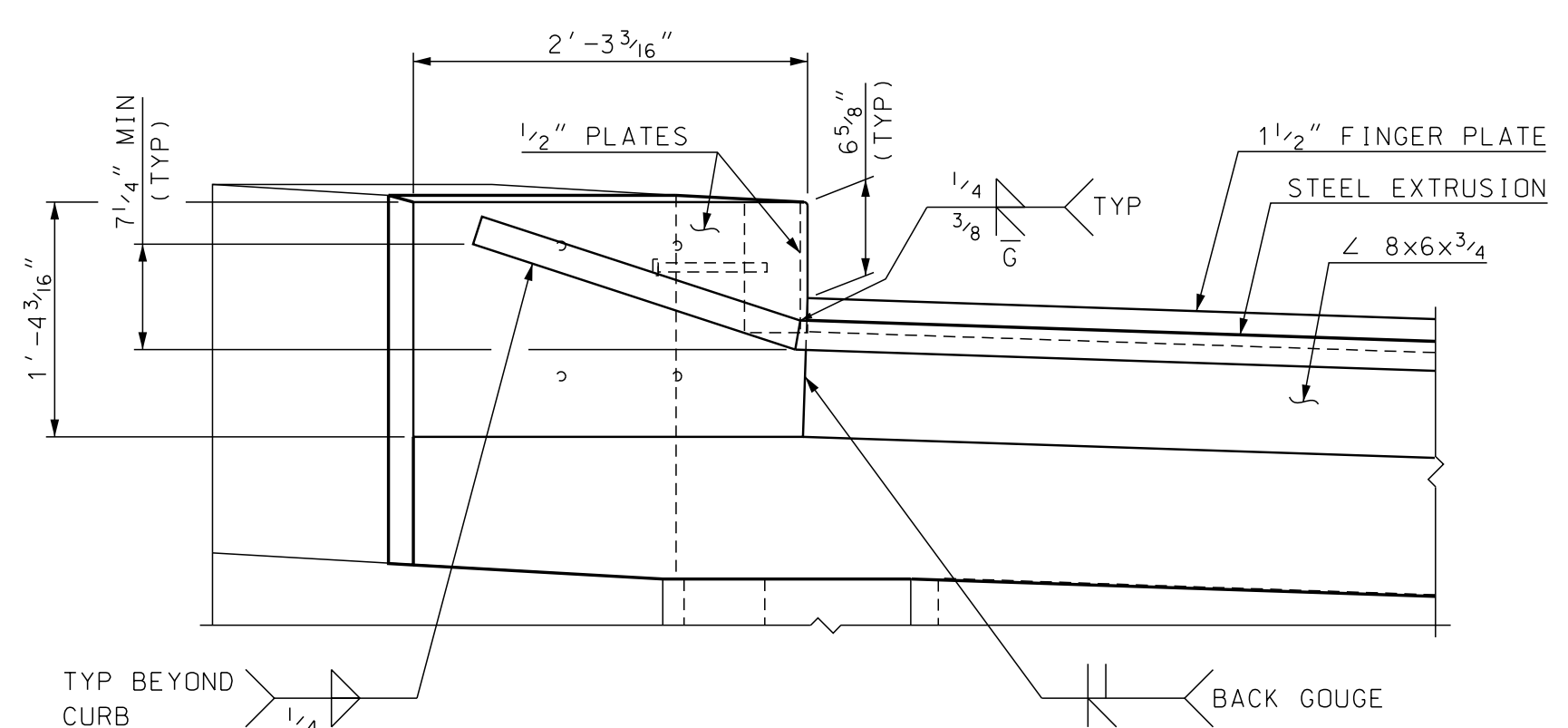
THE CONTRACTOR SHALL TAKE GREAT CARE IN THE AREA OF THE CONSTRUCTION JOINT AS NOT TO DISTURB OR REMOVE BARRIER MEMBRANE MORE THAN REQUIRED TO CONSTRUCT THE END OF THE DECK (SUBS. TO ITEM 502.103) REMOVE PAVEMENT IN THIS AREA SUBS. TO ITEM 502.103.

SECTION A-A REMOVAL
SCALE: 1 1/2" = 1'-0"

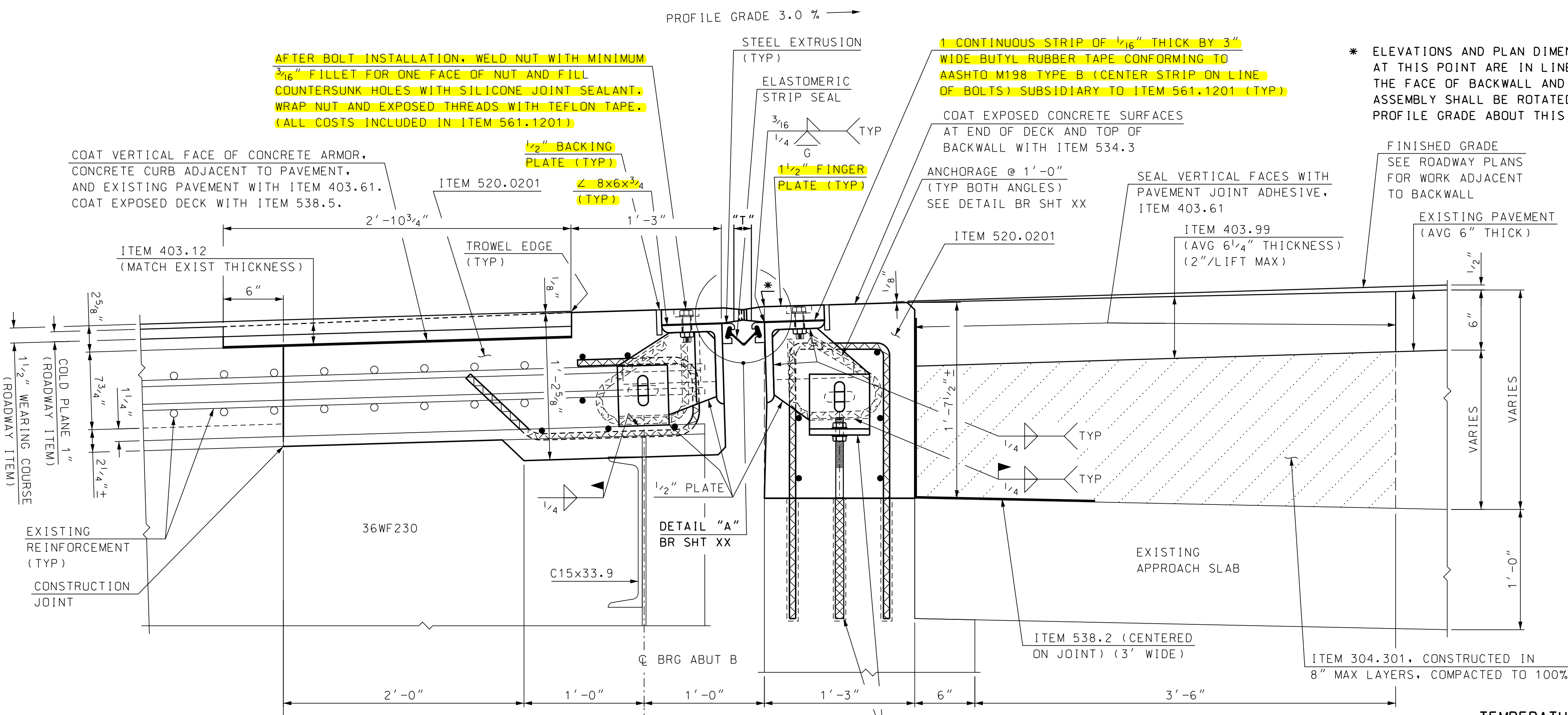
NOTE: DETAILS AND NOTES MAY NOT BE CURRENT. CLOSELY REVIEW BEFORE USING DETAILS.



SECTION B-B
SCALE: 1" = 1'-0"



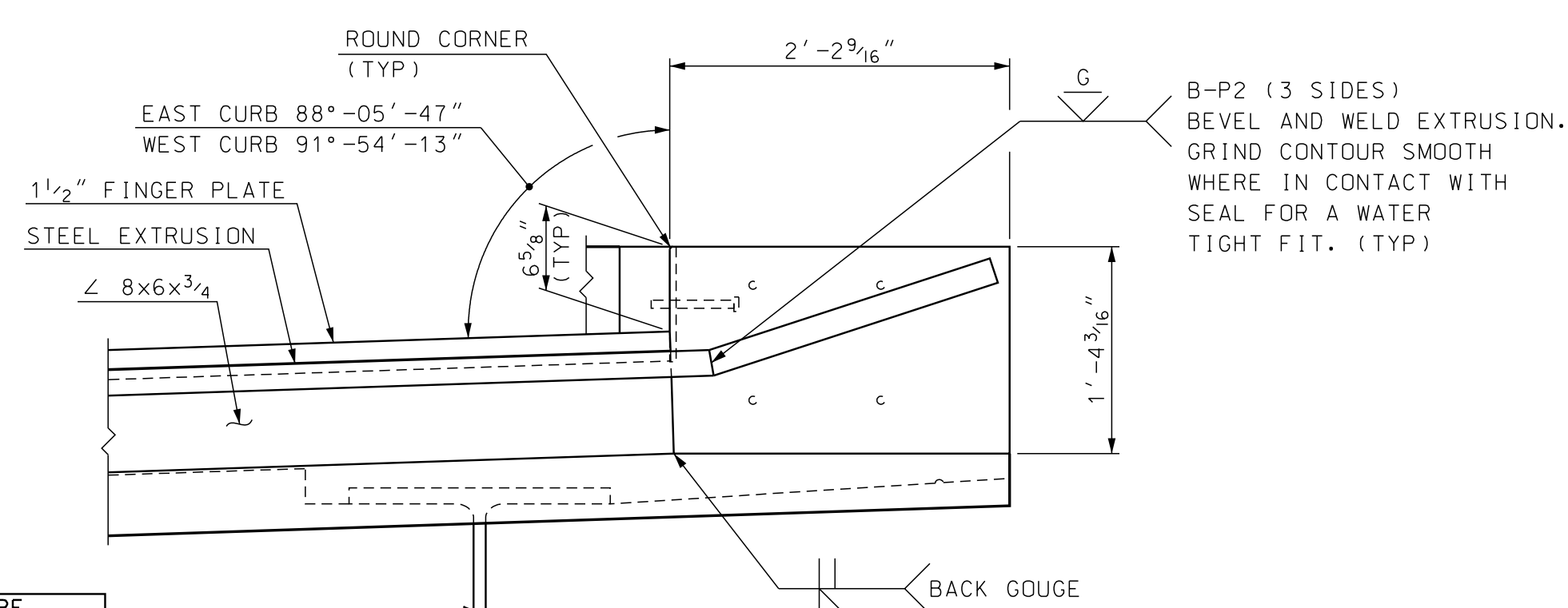
SECTION C-C
SCALE: 1" = 1'-0"



AFTER BOLT INSTALLATION, WELD NUT WITH MINIMUM 3/16\" FILLER FOR ONE FACE OF NUT AND FILL COUNTERSUNK HOLES WITH SILICONE JOINT SEALANT. WRAP NUT AND EXPOSED THREADS WITH TEFLON TAPE. (ALL COSTS INCLUDED IN ITEM 561.1201.)

* ELEVATIONS AND PLAN DIMENSIONS AT THIS POINT ARE IN LINE WITH THE FACE OF BACKWALL AND JOINT ASSEMBLY SHALL BE ROTATED TO PROFILE GRADE ABOUT THIS POINT.

SECTION A-A CONSTRUCTION
SCALE: 1 1/2" = 1'-0"



SECTION D-D
SCALE: 1" = 1'-0"

SAMPLE PLAN
DATE: 05-2018

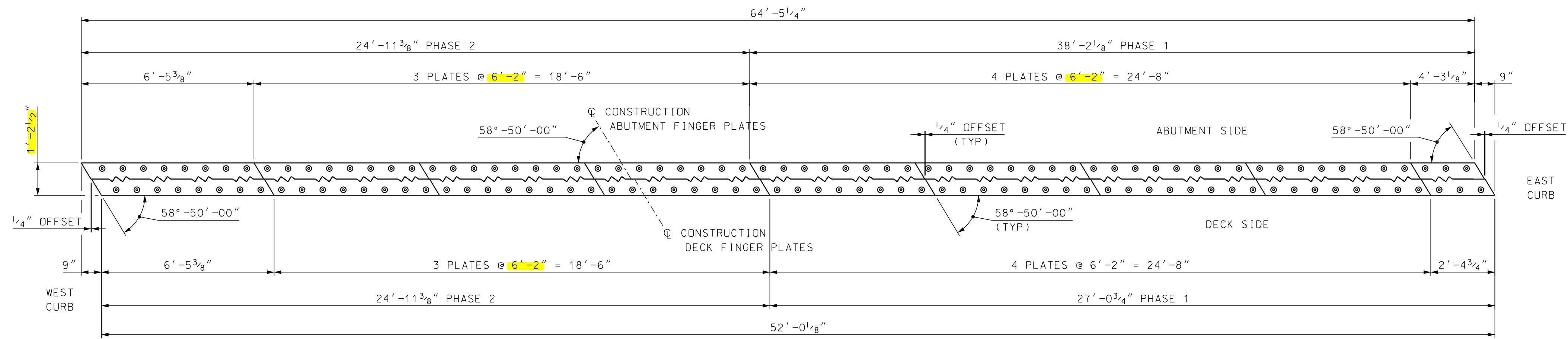
TEMPERATURE ADJUSTMENT TABLE ABUTMENT B	
TEMPERATURE	"T"
20°F	2"
35°F	1 5/16"
50°F	1 3/16"
65°F	1 3/4"
80°F	1 11/16"
95°F	1 9/16"

- TEMPERATURE ADJUSTMENT NOTES**
- "T" DIMENSIONS ARE PERPENDICULAR TO FACE OF BACKWALL.
 - MINIMUM "T" WIDTH FOR SEAL INSTALLATION = 1 3/4" (APPROXIMATELY 65°F OR LESS).
 - VALUES IN THE TEMPERATURE ADJUSTMENT TABLE ARE FOR SETTING THE EXPANSION JOINT ASSEMBLY IMMEDIATELY PRIOR TO POURING CONCRETE BLOCKOUTS.

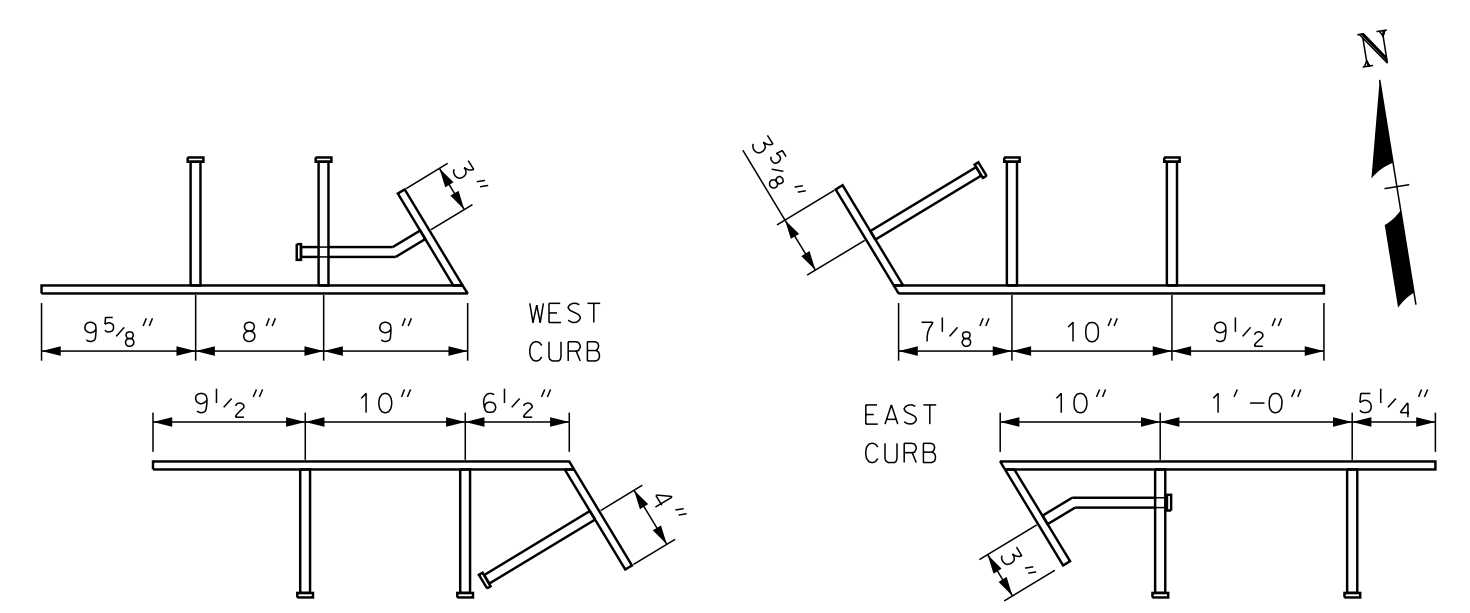
FOR LOCATION OF SECTIONS A-A THROUGH D-D SEE BRIDGE SHEET XX.

STATE OF NEW HAMPSHIRE DEPARTMENT OF TRANSPORTATION * BUREAU OF BRIDGE DESIGN									
TOWN WARNER		BRIDGE NO. 164/104		STATE PROJECT XX		BRIDGE SHEET			
LOCATION 1-89 NORTHBOUND over N.H. ROUTE 103 (INTERSTATE BR. #27)									
ABUT B STRIP SEAL EXP JT W/PLOW PLATES (2 OF 3)									
REVISIONS AFTER PROPOSAL		BY DATE		BY DATE		X OF XX			
DESIGNED SMG 5/18		CHECKED X X		FILE NUMBER		XX-X-X			
DRAWN SMG 5/18		CHECKED X X		TOTAL SHEETS		1			
QUANTITIES X X		CHECKED X X		SHEET NO.		1			
ISSUE DATE		FEDERAL PROJECT NO.		SHEET NO.		TOTAL SHEETS			
REV. DATE		-----		1		1			

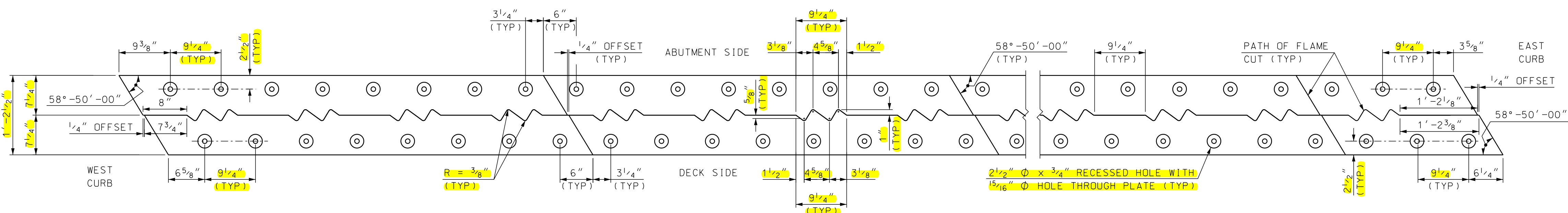
SUBDIRECTORY	DGN LOCATOR	SHEET SCALE
5 NH Route 103 Warner Plow Plate NB164-104 B	AS NOTED	



ALL DIMENSIONS ARE HORIZONTAL
ABUTMENT B FINGER PLATE PLAN
 SCALE: 3/8" = 1'-0"



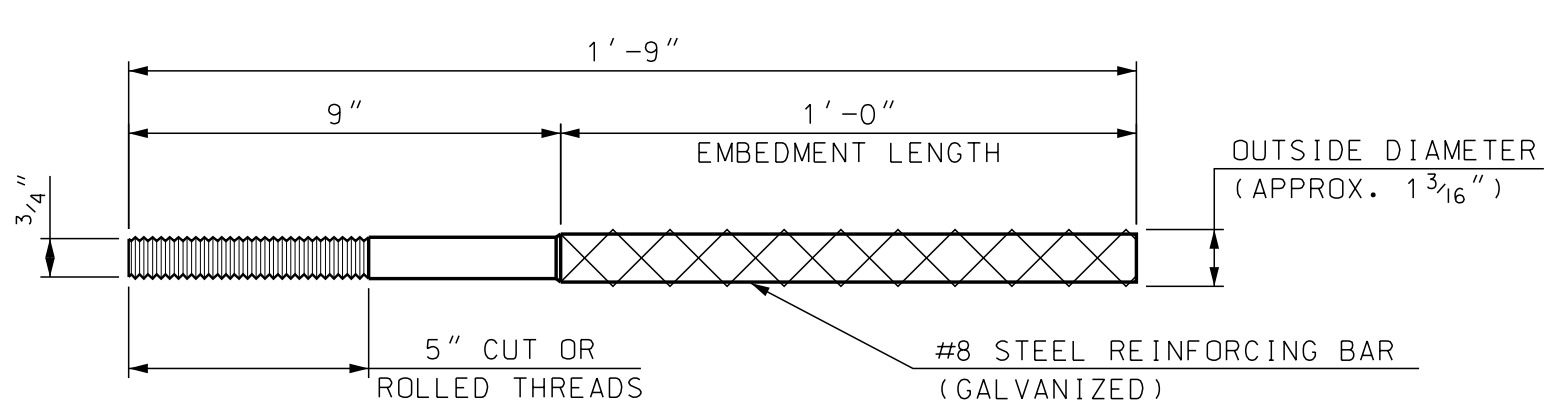
STUD LAYOUT
 SCALE: 1" = 1'-0"



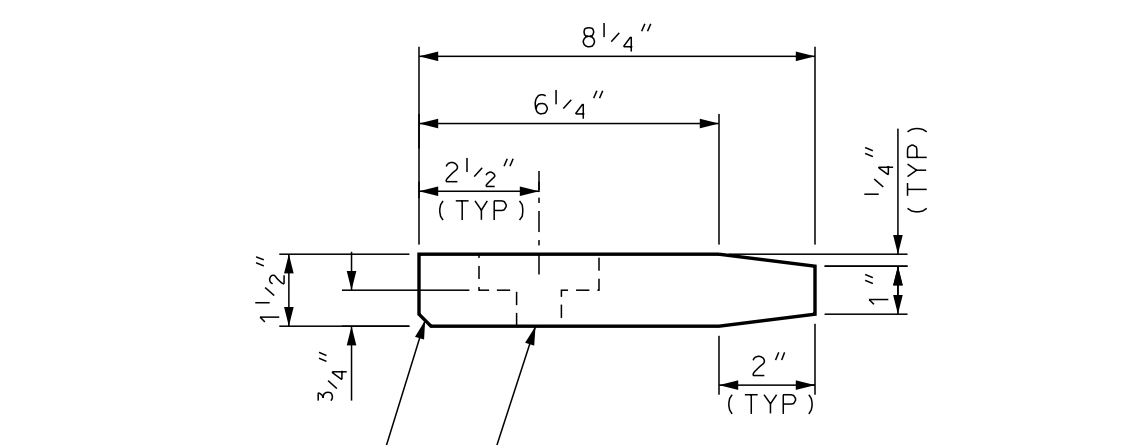
ABUTMENT B FINGER CUTTING DETAIL
 SCALE: 1" = 1'-0"

NOTE: DETAILS AND NOTES MAY NOT BE CURRENT. CLOSELY REVIEW BEFORE USING DETAILS.

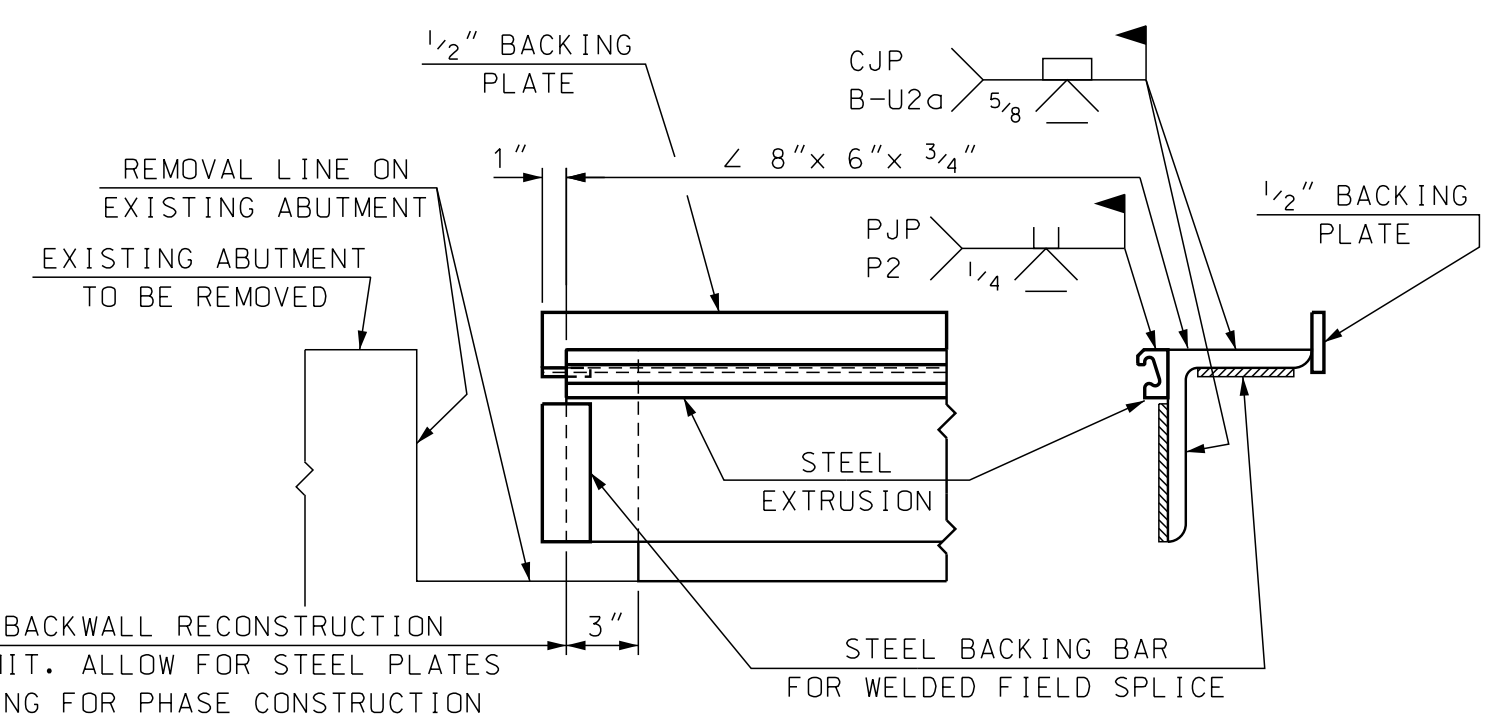
SAMPLE PLAN
 DATE: 05-2018



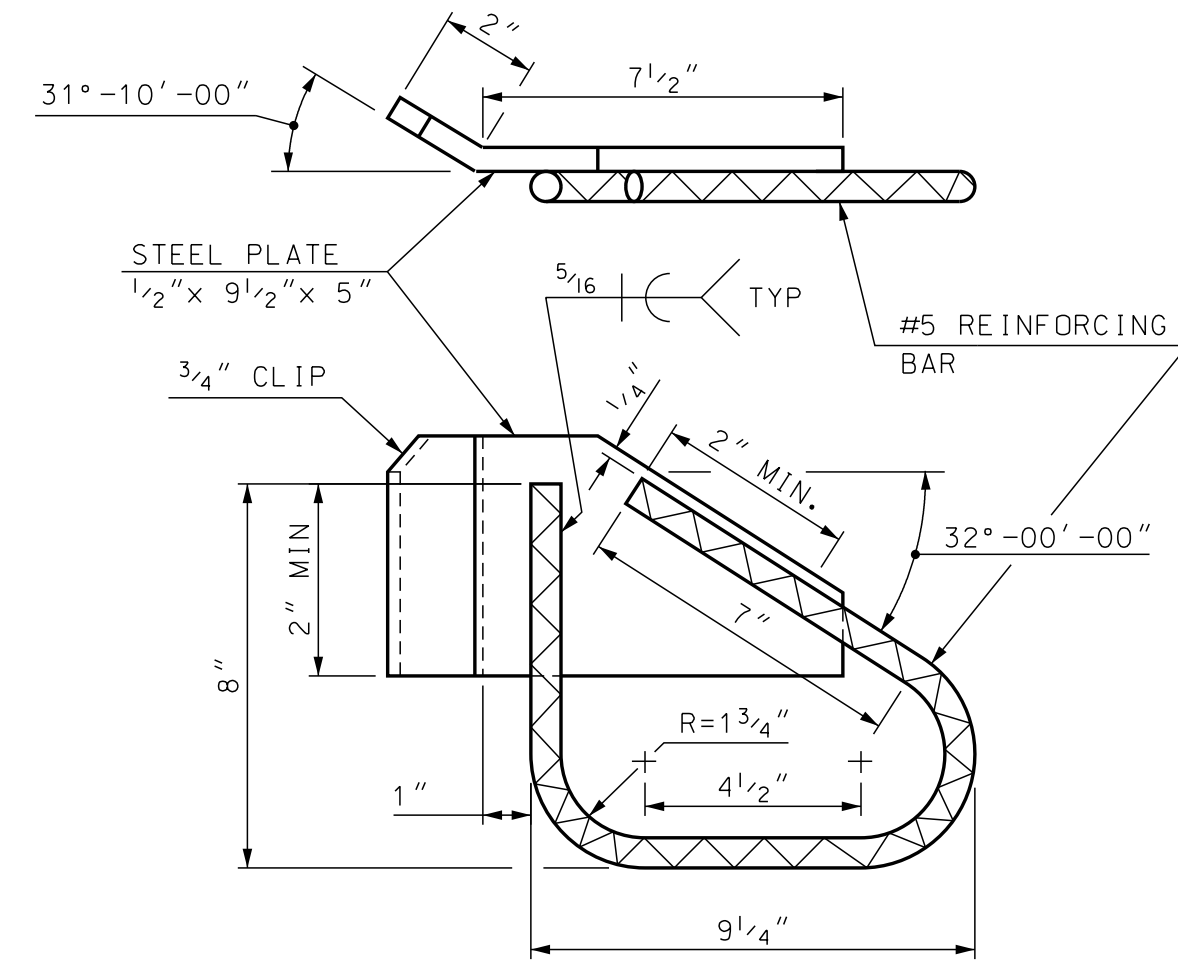
ANCHOR ROD DETAIL
 (14 REQUIRED)
 SCALE: NTS



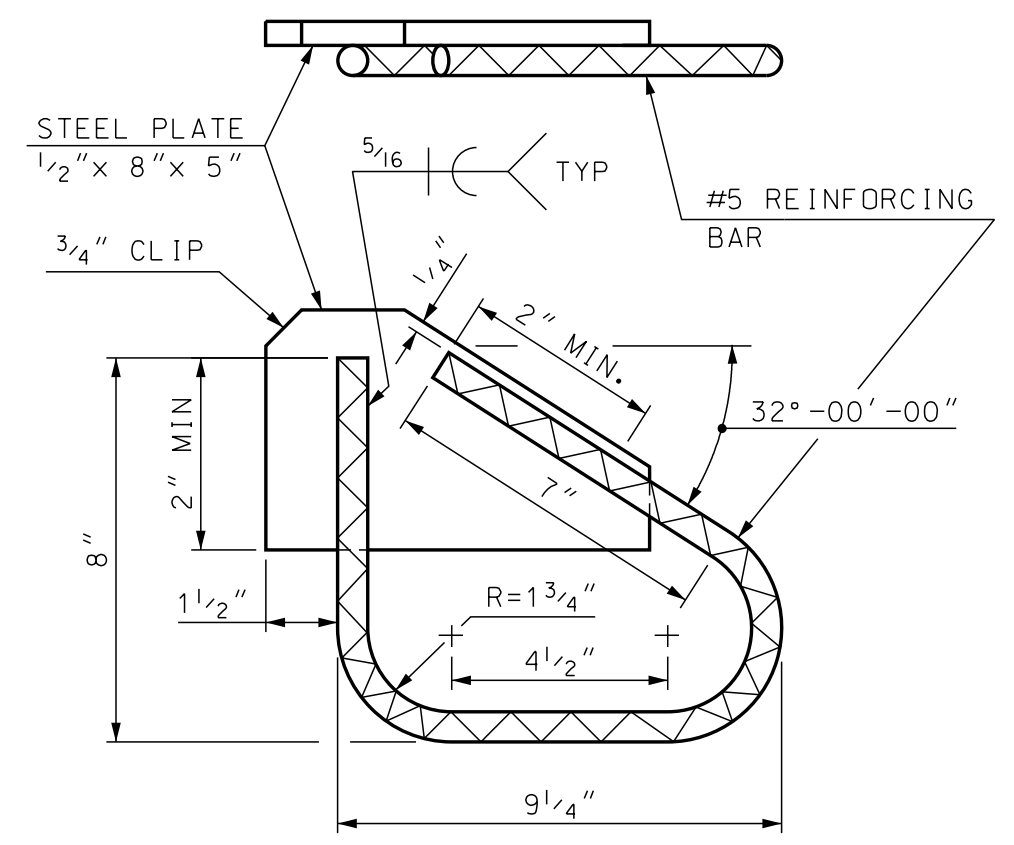
DETAIL "A"
 SCALE: 3" = 1'-0"



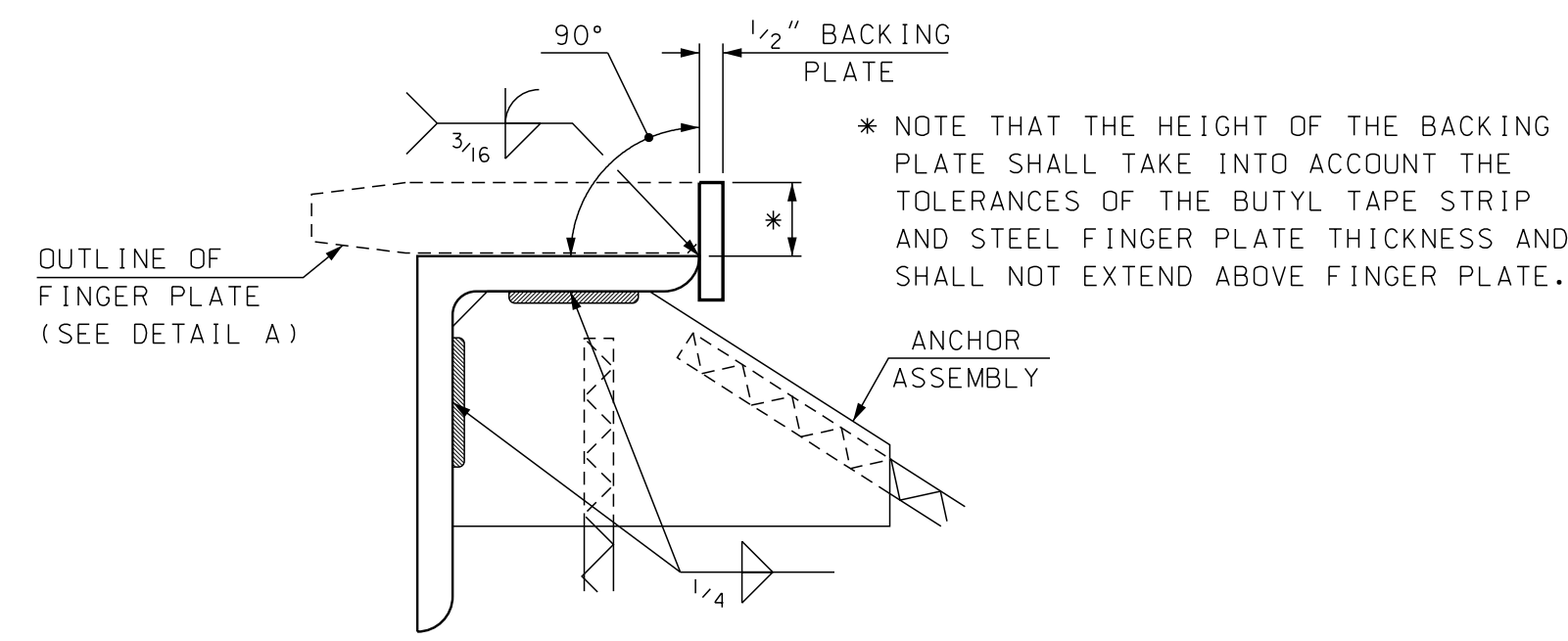
PHASE CONSTRUCTION - SPLICE DETAILS
 N.T.S.



DECK ANCHORAGE DETAIL
 SCALE: 3" = 1'-0"



STUBWALL ANCHORAGE DETAIL
 SCALE: 3" = 1'-0"



DETAIL "B"
 SCALE: 3" = 1'-0"

STATE OF NEW HAMPSHIRE										
DEPARTMENT OF TRANSPORTATION * BUREAU OF BRIDGE DESIGN										
TOWN	WARNER	BRIDGE NO.	164/104	STATE PROJECT	XX					
LOCATION 1-89 NORTHBOUND over N.H. ROUTE 103 (INTERSTATE BR. #27)										
ABUT B STRIP SEAL EXP JT W/PLOW PLATES (3 OF 3)					BRIDGE SHEET					
REVISIONS AFTER PROPOSAL					BY	DATE	BY	DATE	X OF XX	
					DESIGNED	SMG	5/18	CHECKED	X	X
					DRAWN	SMG	5/18	CHECKED	X	X
					QUANTITIES	X	X	CHECKED	X	X
					ISSUE DATE		FEDERAL PROJECT NO.		SHEET NO.	TOTAL SHEETS
					REV. DATE				1	1

SUBDIRECTORY	DGN LOCATOR	SHEET SCALE
5 NH Route 103 Warner Plow Plate NB164-104 B		AS NOTED