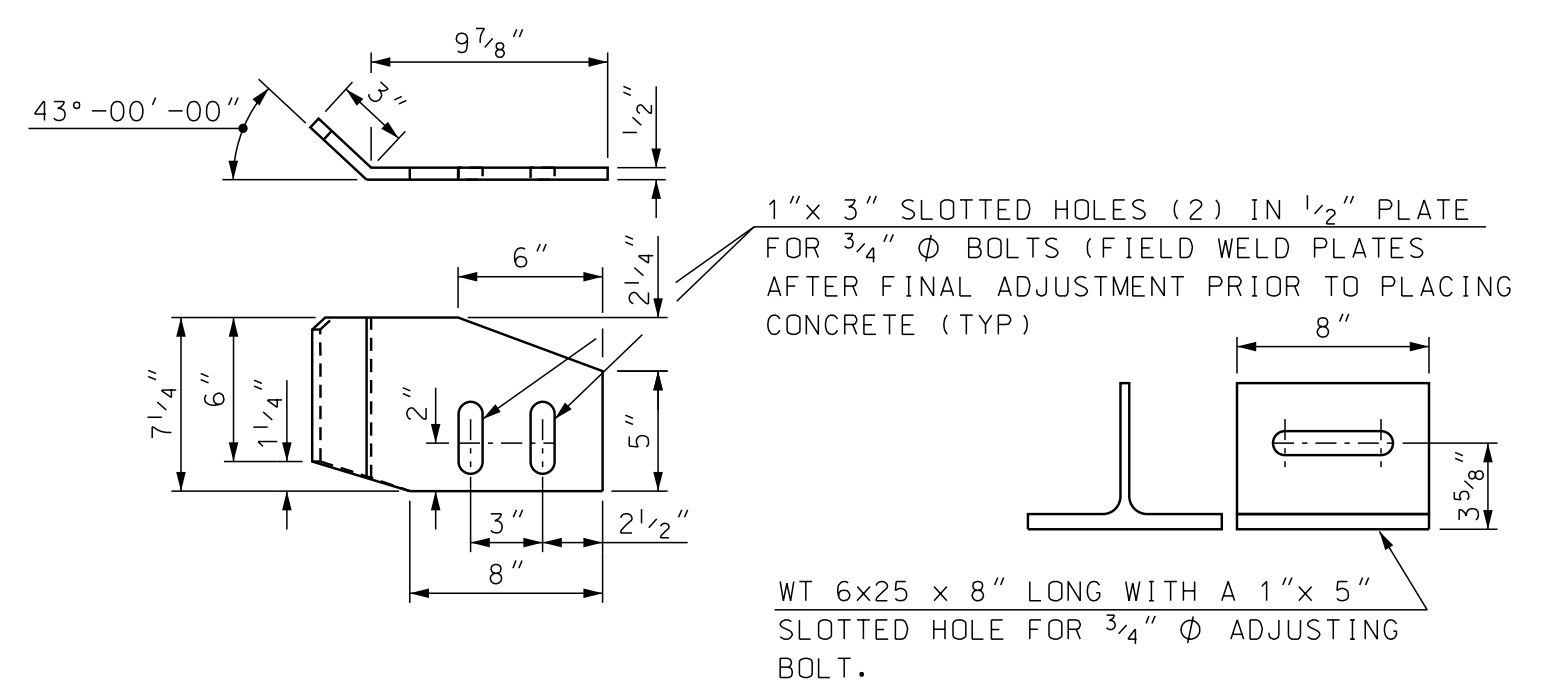
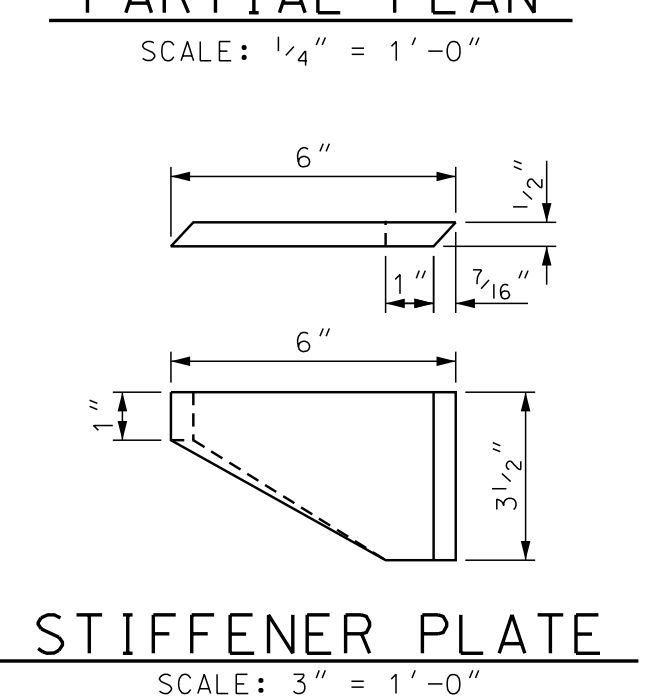
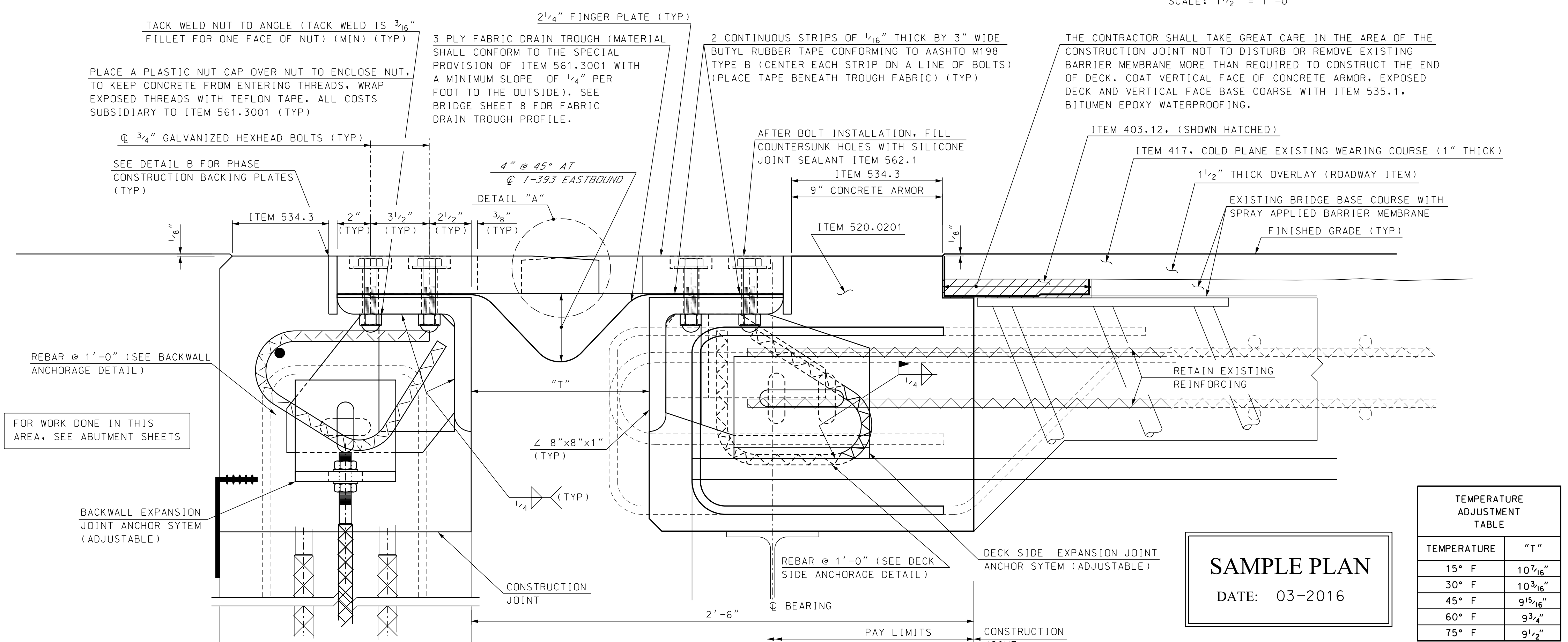


NOTE: DETAILS AND NOTES MAY NOT BE CURRENT. CLOSELY REVIEW BEFORE USING DETAILS.



IT IS INTENDED THAT THE TOP OF EXPANSION JOINT FINGER PLATE STEEL BE SET 2 1/2" ABOVE THE EXISTING CONCRETE DECK SURFACE TO MATCH GRADE OF FINISHED SURFACE



- EXPANSION JOINT NOTES**
- ALL EXPANSION JOINT STEEL SHALL BE ASTM A572 GRADE 50, GALVANIZED, EXCEPT AS OTHERWISE ALLOWED. MINOR PLATES MAY BE ASTM A36. THE ENTIRE ASSEMBLY SHALL BE PAID FOR AS ITEM 561.3001, PREFABRICATED EXPANSION JOINT, FINGER JOINT (F).
 - SPLICES FOR EXPANSION JOINT STEEL SHALL DEVELOP FULL STRENGTH.
 - THE EXPANSION JOINT SHALL BE PRESET TO THE TEMPERATURE ANTICIPATED AT THE TIME OF INSTALLATION. FINAL SETTING IN THE FIELD SHALL BE DETERMINED BY THE ENGINEER. SEE TEMPERATURE ADJUSTMENT TABLE. THE MAXIMUM ALLOWABLE MOVEMENT SHALL BE 3 1/4 INCHES.
 - PROTECT TOP OF EXPANSION JOINT DURING PLACEMENT OF CONCRETE AND BITUMINOUS PAVEMENT.
 - JOINT SUPPORT PLATES SHALL BE SHOP WELDED TO THE EXPANSION JOINT STEEL AND SHALL BE VERTICAL AFTER THE JOINT ASSEMBLY HAS BEEN ADJUSTED FOR ROADWAY CROSS-SLOPE AND GRADE.
 - FASCIA AND CURB PLATES SHALL BE SHOP WELDED AND SHALL BE VERTICAL AFTER THE JOINT ASSEMBLY HAS BEEN ADJUSTED FOR ROADWAY CROSS-SLOPE AND GRADE.
 - REMOVE SHIPPING DEVICES IMMEDIATELY AFTER THE JOINT HAS BEEN SECURED TO THE STRUCTURAL STEEL AND BACKWALL. WELDING OF SHIPPING DEVICES TO FINGER PLATE SHALL NOT BE ALLOWED.
 - THE FINGER PLATES SHALL BE CUT FROM ONE CONTINUOUS 2'-0" WIDE x 2 1/4" THICK PLATE AS SHOWN ON THE FINGER CUTTING DETAIL, AND FURNISHED IN 13 LENGTHS.
 - THE HOPPERS AND DOWNSPOUTS SHALL BE A-36 GALVANIZED IN ACCORDANCE WITH SECTION 550. PAYMENT FOR HOPPERS, BLOCKING PADS AND ALL ATTACHMENTS WILL BE SUBSIDIARY TO ITEM 561.3001.
 - SEE BRIDGE SHEET 9 FOR HOPPER DETAILS.
 - THE FABRIC TROUGH SHALL BE PREFORMED FABRIC MATERIAL AND SHALL BE CUT DURING SHOP PRE-ASSEMBLY. THE TROUGH MAY BE SUPPLIED IN 4 LENGTHS WITH 1'-0" OVERLAP AT @ CONSTRUCTION.
 - TRIM EXCESS FABRIC BEHIND CURB PLATES.

SAMPLE PLAN
DATE: 03-2016

TEMPERATURE ADJUSTMENT TABLE	
TEMPERATURE	"T"
15° F	10 3/16"
30° F	10 3/16"
45° F	9 15/16"
60° F	9 3/4"
75° F	9 1/2"

STATE OF NEW HAMPSHIRE
DEPARTMENT OF TRANSPORTATION * BUREAU OF BRIDGE DESIGN

TOWN: CONCORD BRIDGE NO. 162/184 STATE PROJECT 40405

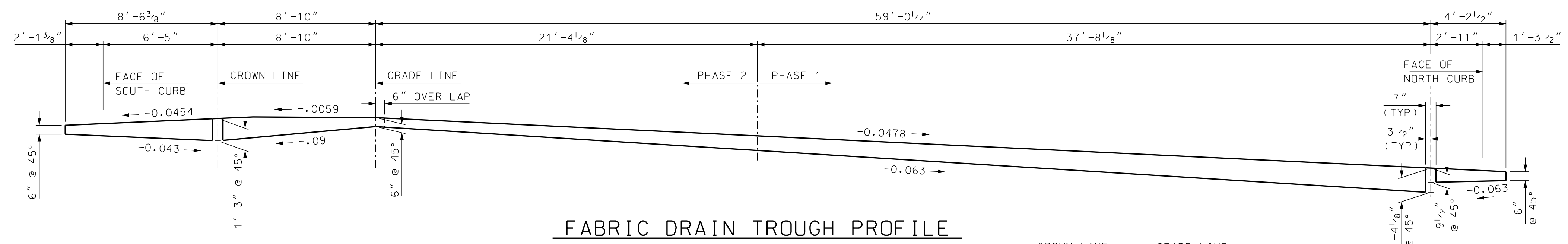
LOCATION: I-393 EASTBOUND OVER SOUCCOOK RIVER

FINGER PLATE EXP. JOINT (ITEM 561.3001) (1 OF 3)

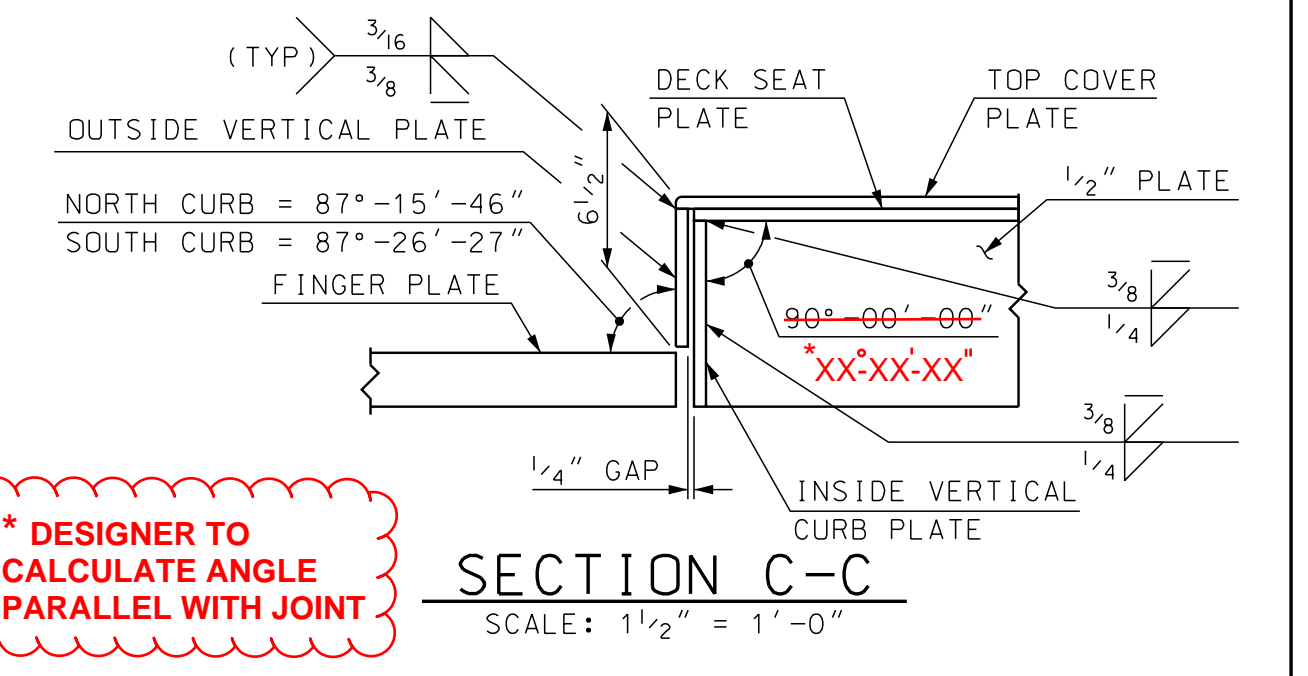
DESIGNED	XXX	XX/XX	CHECKED	XXX	XX/XX
DRAWN	GMC	3/16	CHECKED	CKN	3/16
QUANTITIES	GMC	3/16	CHECKED	CKN	3/16
ISSUE DATE	FEDERAL PROJECT NO.		SHEET NO.		TOTAL SHEETS
REV. DATE	-----		1		1

BRIDGE SHEET 7 OF XX
FILE NUMBER XX-X-X

SUBDIRECTORY	DGN LOCATOR	SHEET SCALE
BRC/162_184EB	40405ExpJA162-184	AS NOTED



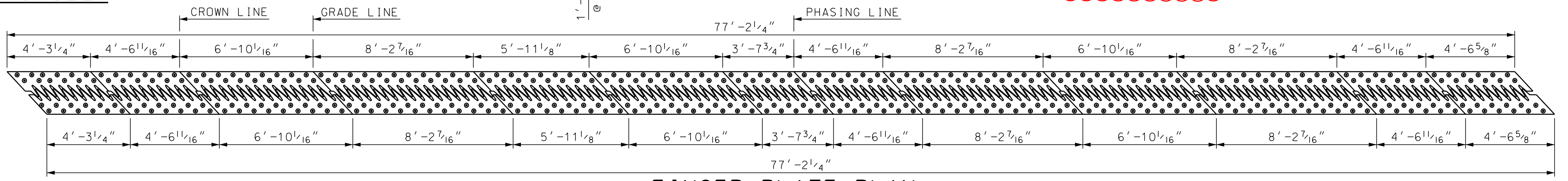
FABRIC DRAIN TROUGH PROFILE
SCALE: 1/4" = 1'-0"



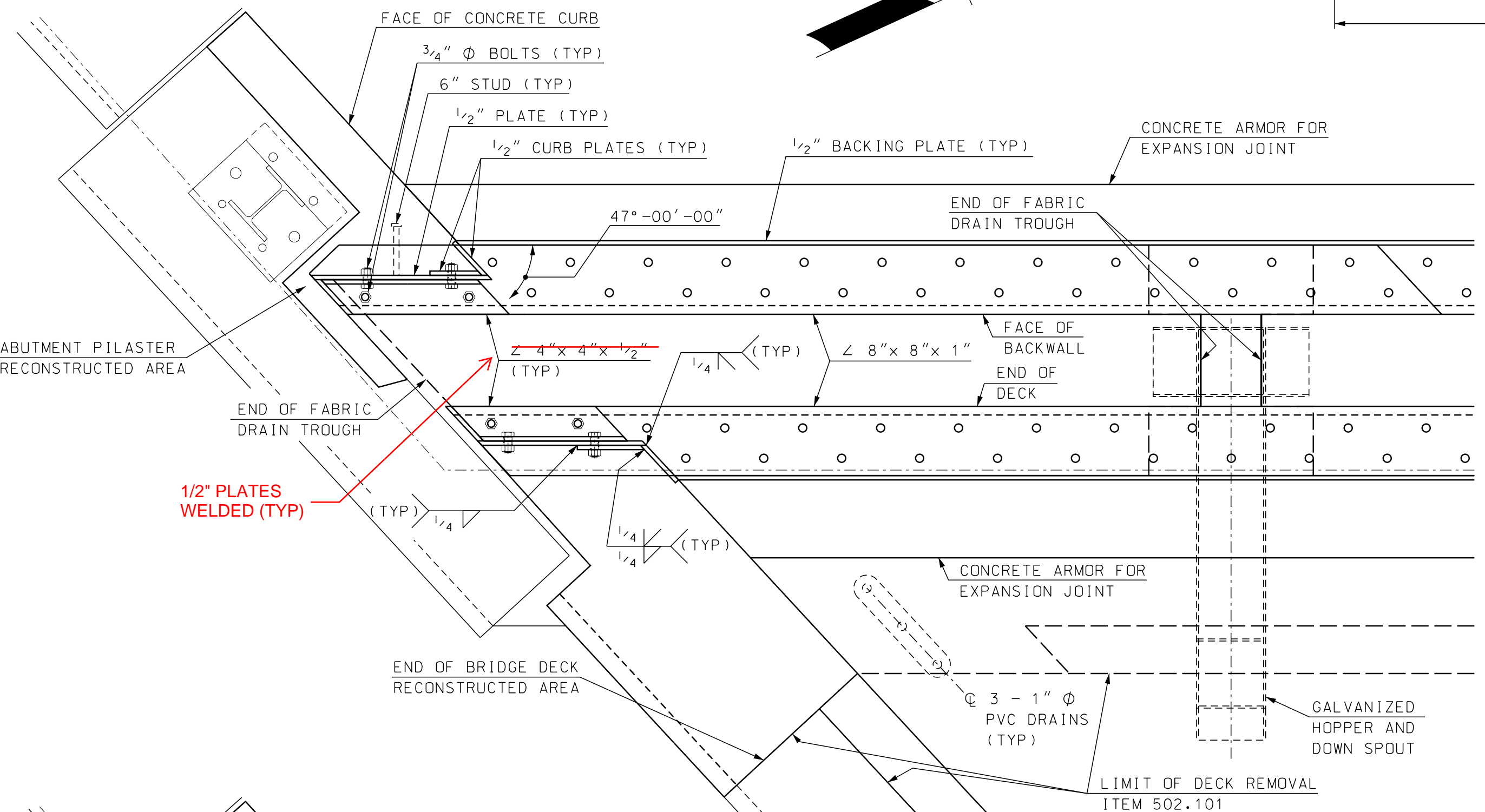
*** DESIGNER TO CALCULATE ANGLE PARALLEL WITH JOINT**

SECTION C-C
SCALE: 1 1/2" = 1'-0"

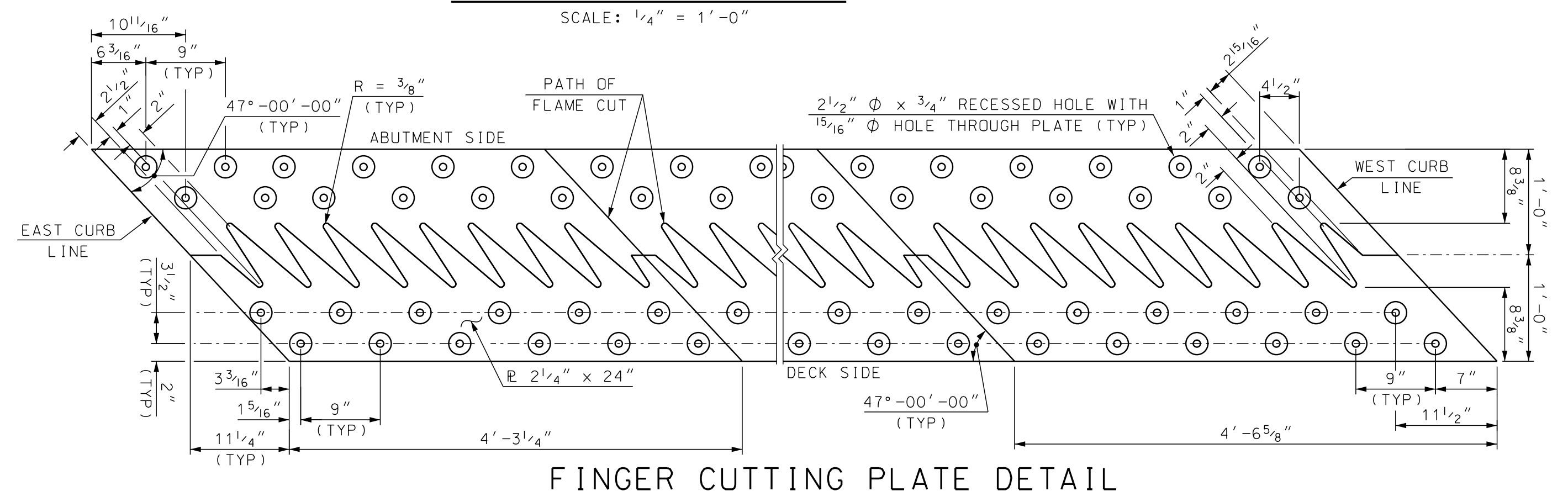
NOTE: DETAILS AND NOTES MAY NOT BE CURRENT. CLOSELY REVIEW BEFORE USING DETAILS.



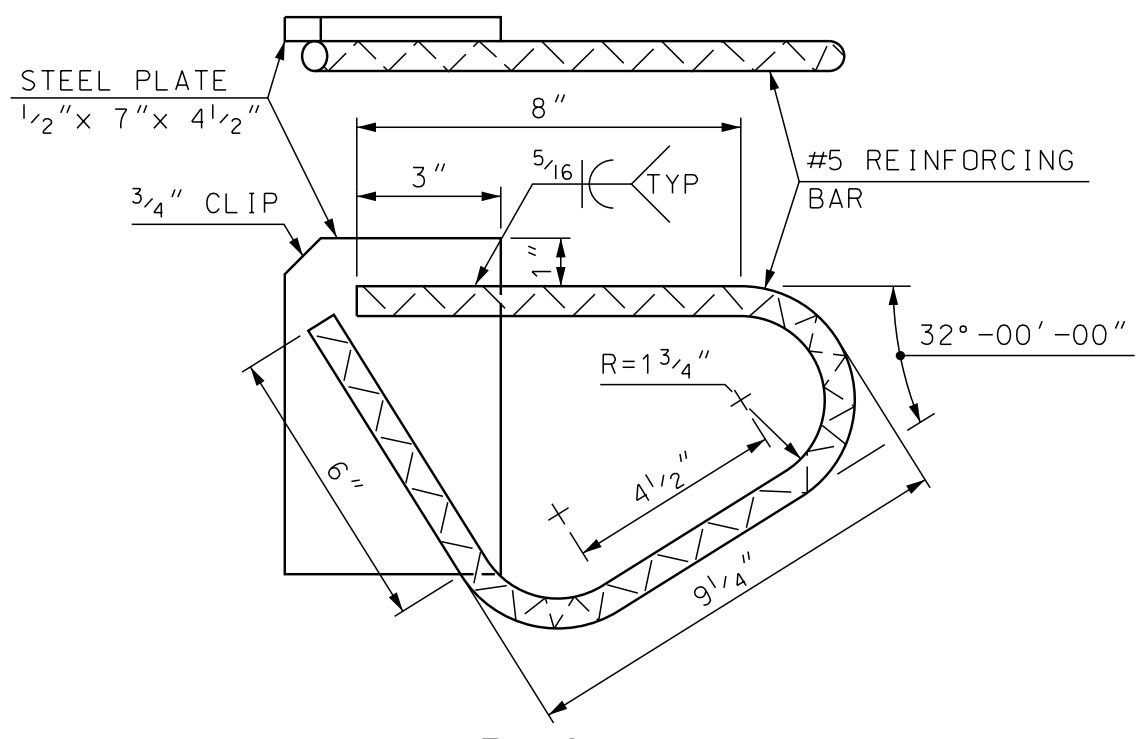
FINGER PLATE PLAN
SCALE: 1/4" = 1'-0"



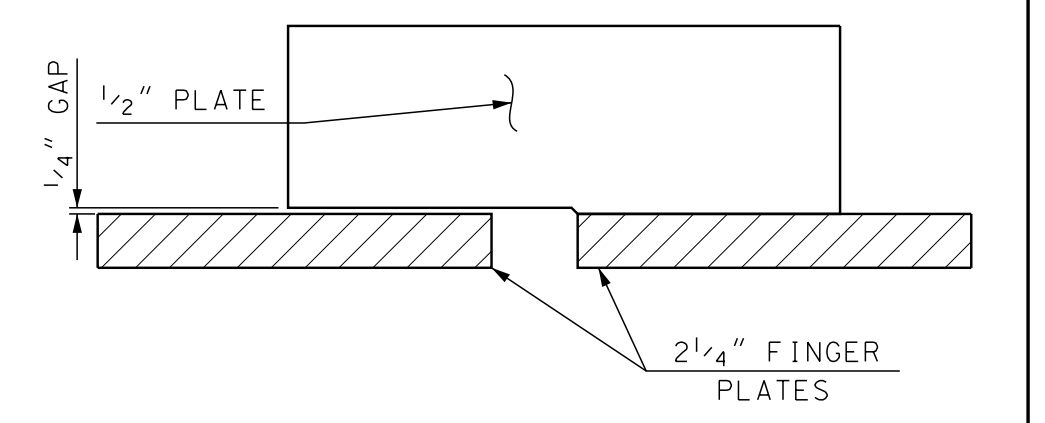
LOWER ASSEMBLY
(SIDE VERTICAL PLATES NOT SHOWN. SEE DETAIL BELOW)
SCALE: 1" = 1'-0"



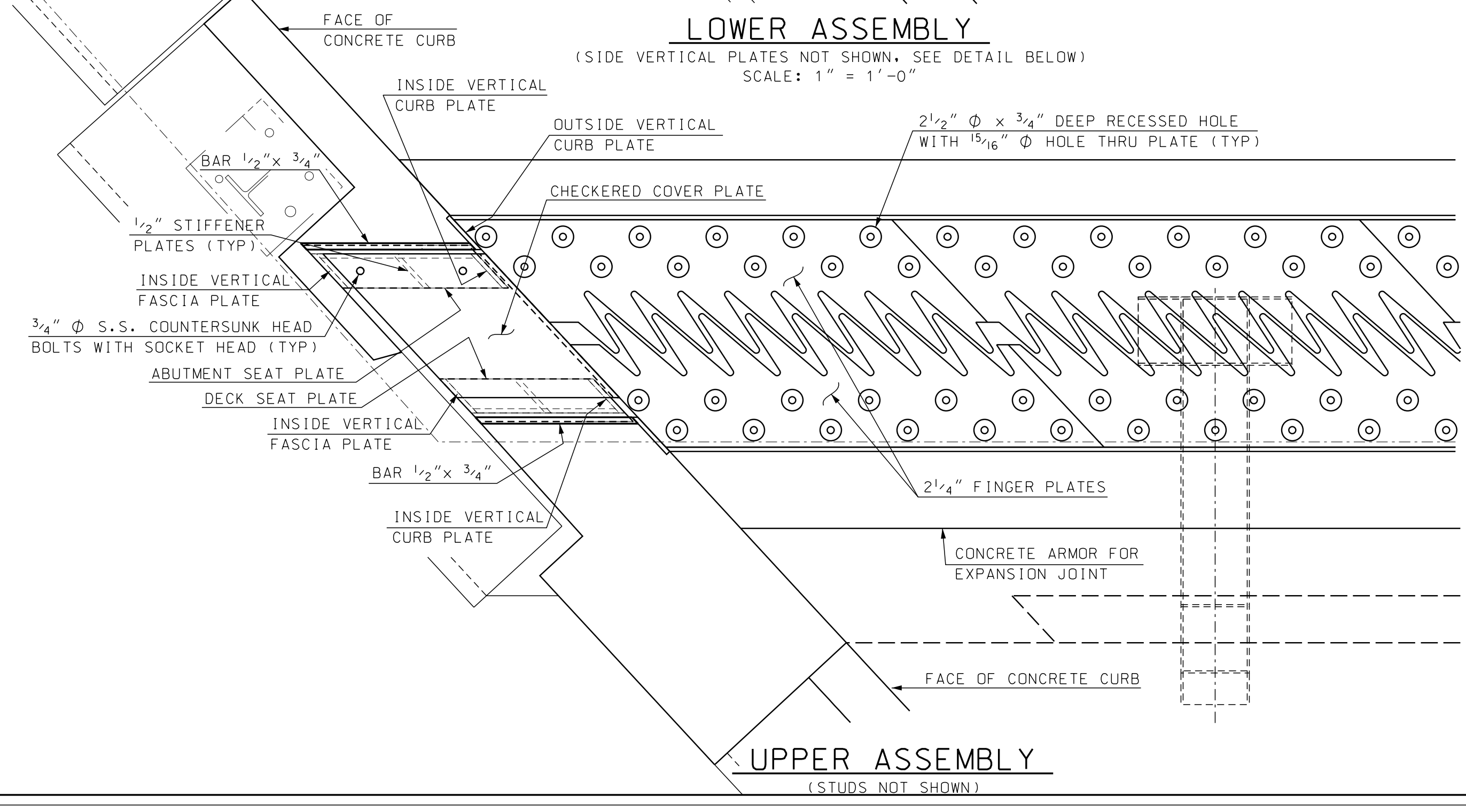
FINGER CUTTING PLATE DETAIL
SCALE: 1" = 1'-0"



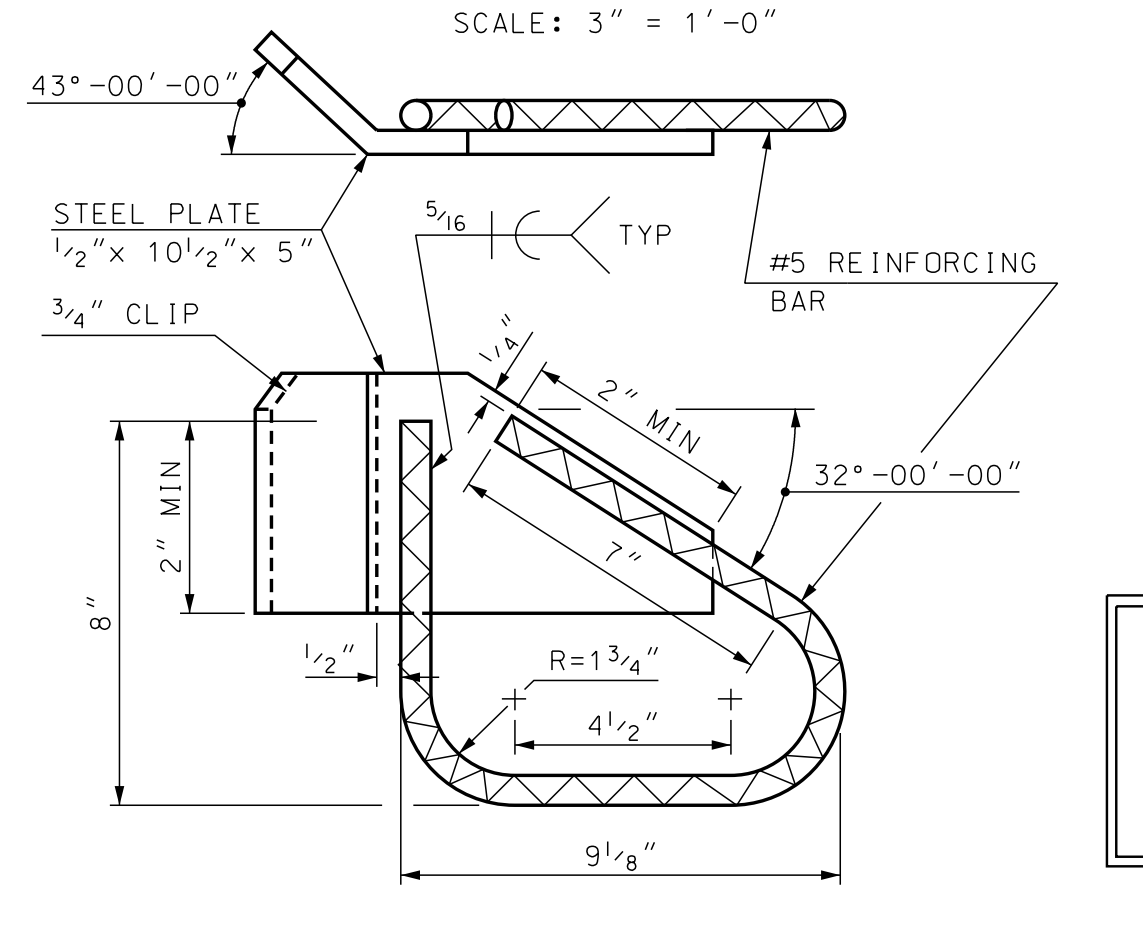
BACKWALL ANCHORAGE DETAIL
SCALE: 3" = 1'-0"



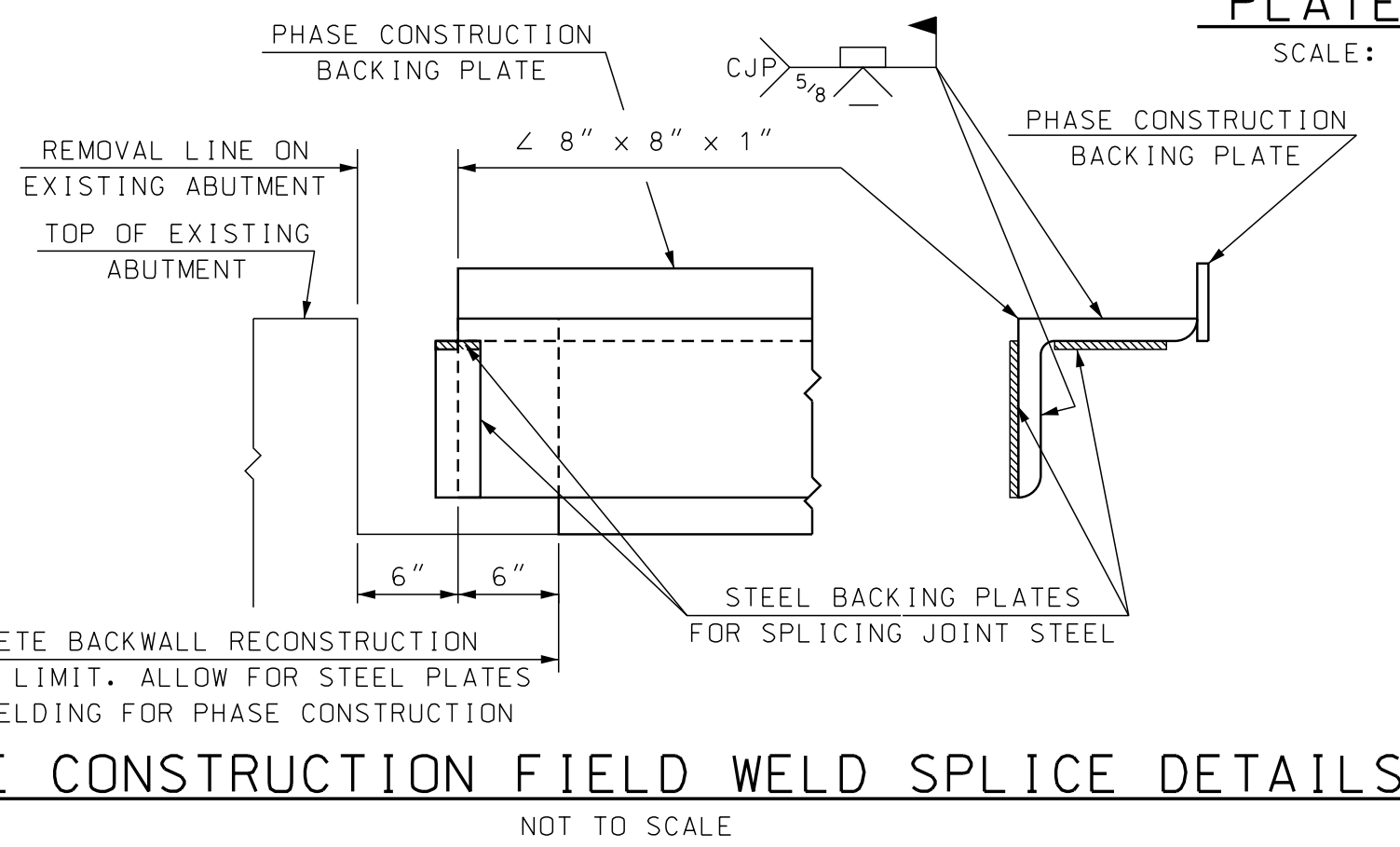
OUTSIDE VERTICAL CURB PLATE DETAIL
SCALE: 1 1/2" = 1'-0"



UPPER ASSEMBLY
(STUDS NOT SHOWN)



DECK SIDE ANCHORAGE DETAIL
SCALE: 3" = 1'-0"

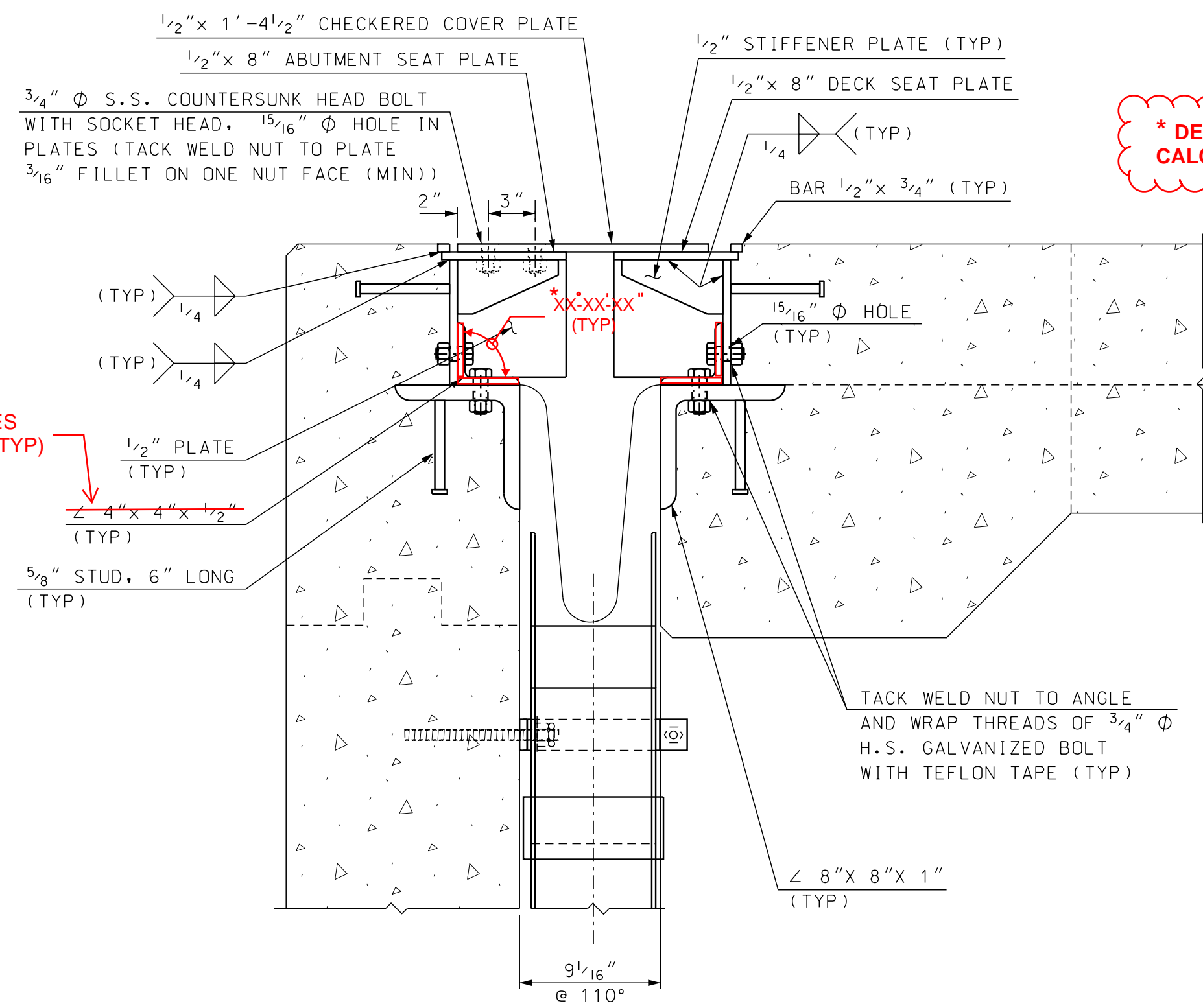


PHASE CONSTRUCTION FIELD WELD SPLICE DETAILS
NOT TO SCALE

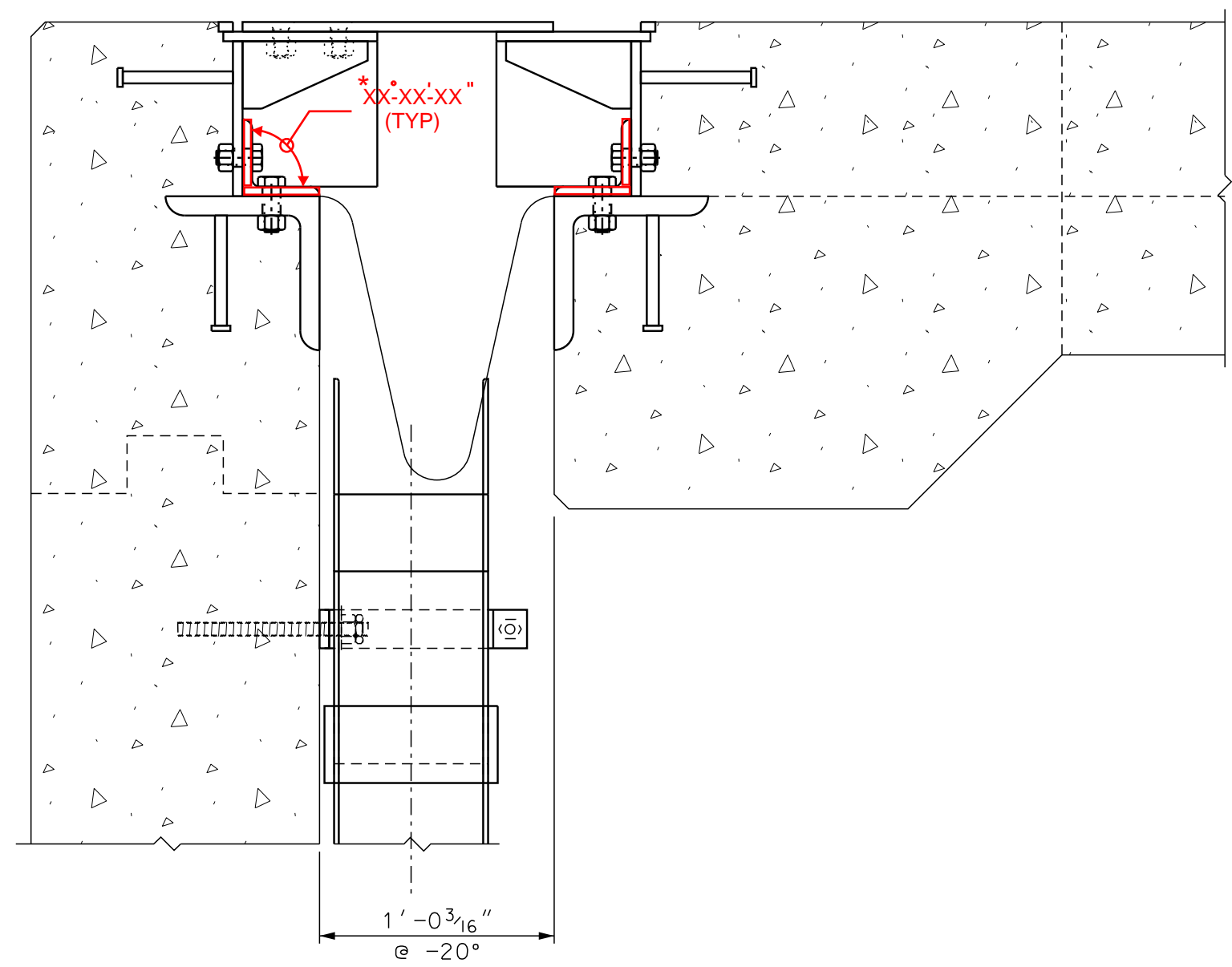
SAMPLE PLAN
DATE: 03-2016

DGN LOCATOR	SHEET SCALE
40405ExpJA162-184	AS NOTED

STATE OF NEW HAMPSHIRE											
DEPARTMENT OF TRANSPORTATION * BUREAU OF BRIDGE DESIGN											
TOWN	CONCORD	BRIDGE NO.	162/184	STATE PROJECT	40405						
LOCATION						1-393 EASTBOUND OVER SOUCCOOK RIVER					
FINGER PLATE EXP. JOINT (ITEM 561.3001) (2 OF 3)											
REVISIONS AFTER PROPOSAL		BY	DATE	CHECKED	FILE NUMBER	BRIDGE SHEET					
		XXX	XX/XX	XXX	XX/XX	8 OF XX					
		GMC	3/16	CHECKED	CKN	XX-X-X					
		GMC	3/16	CHECKED	CKN	3/16					
ISSUE DATE		FEDERAL PROJECT NO.			SHEET NO.		TOTAL SHEETS				
REV. DATE		-----			1		1				



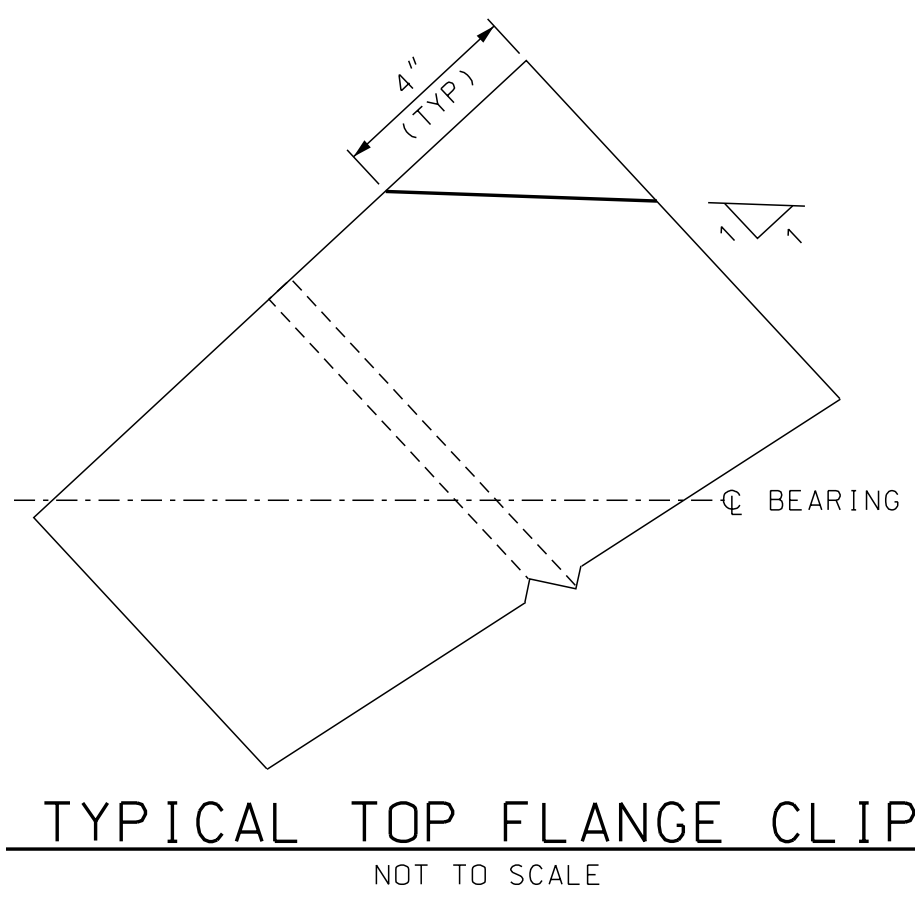
* DESIGNER TO CALCULATE ANGLE



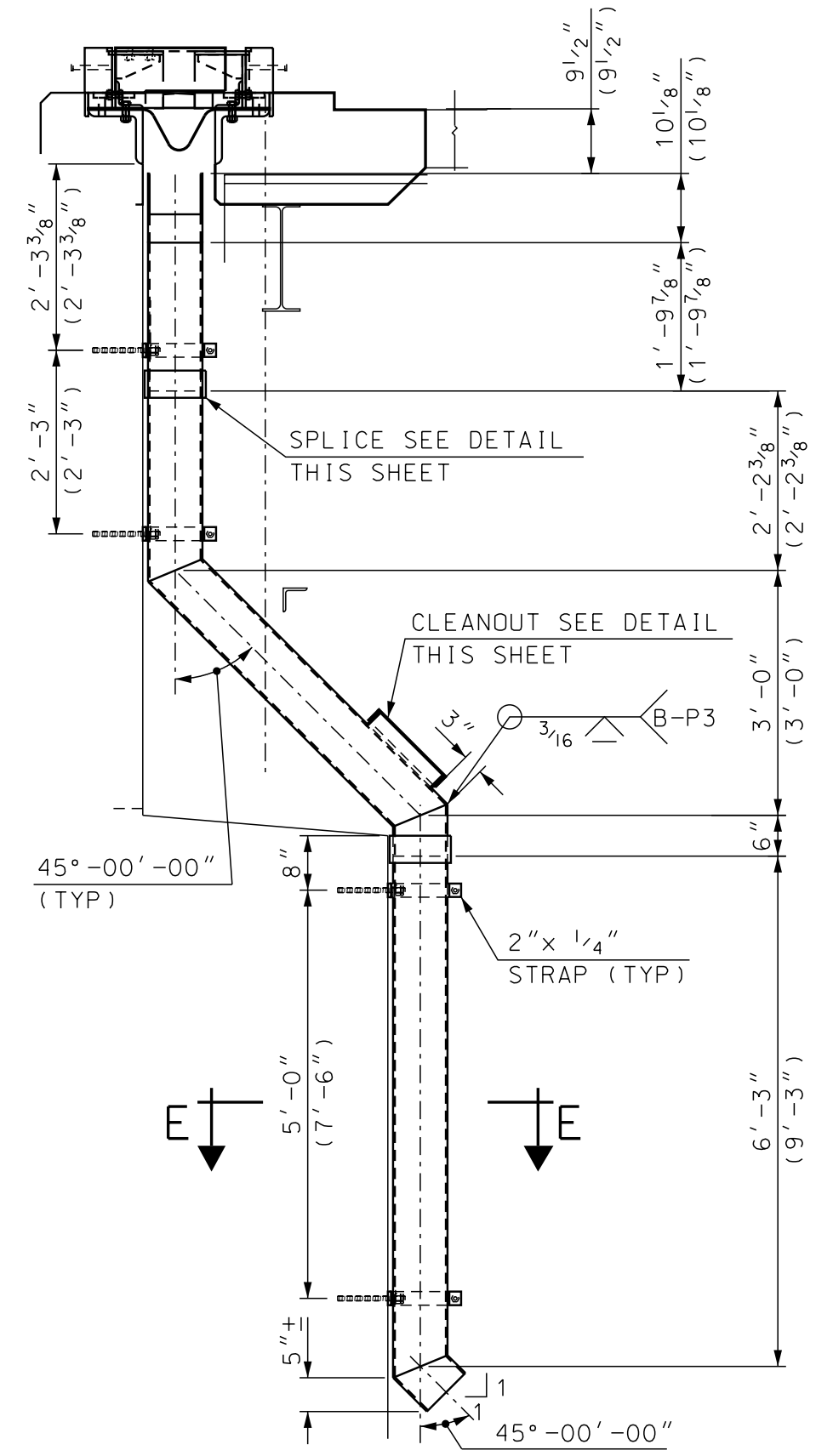
SECTION B-B
 SCALE: 1 1/2" = 1'-0"
 (MIN. OPENING)

SECTION B-B
 SCALE: 1 1/2" = 1'-0"
 (MAX. OPENING)

NOTE: DETAILS AND NOTES MAY NOT BE CURRENT. CLOSELY REVIEW BEFORE USING DETAILS.

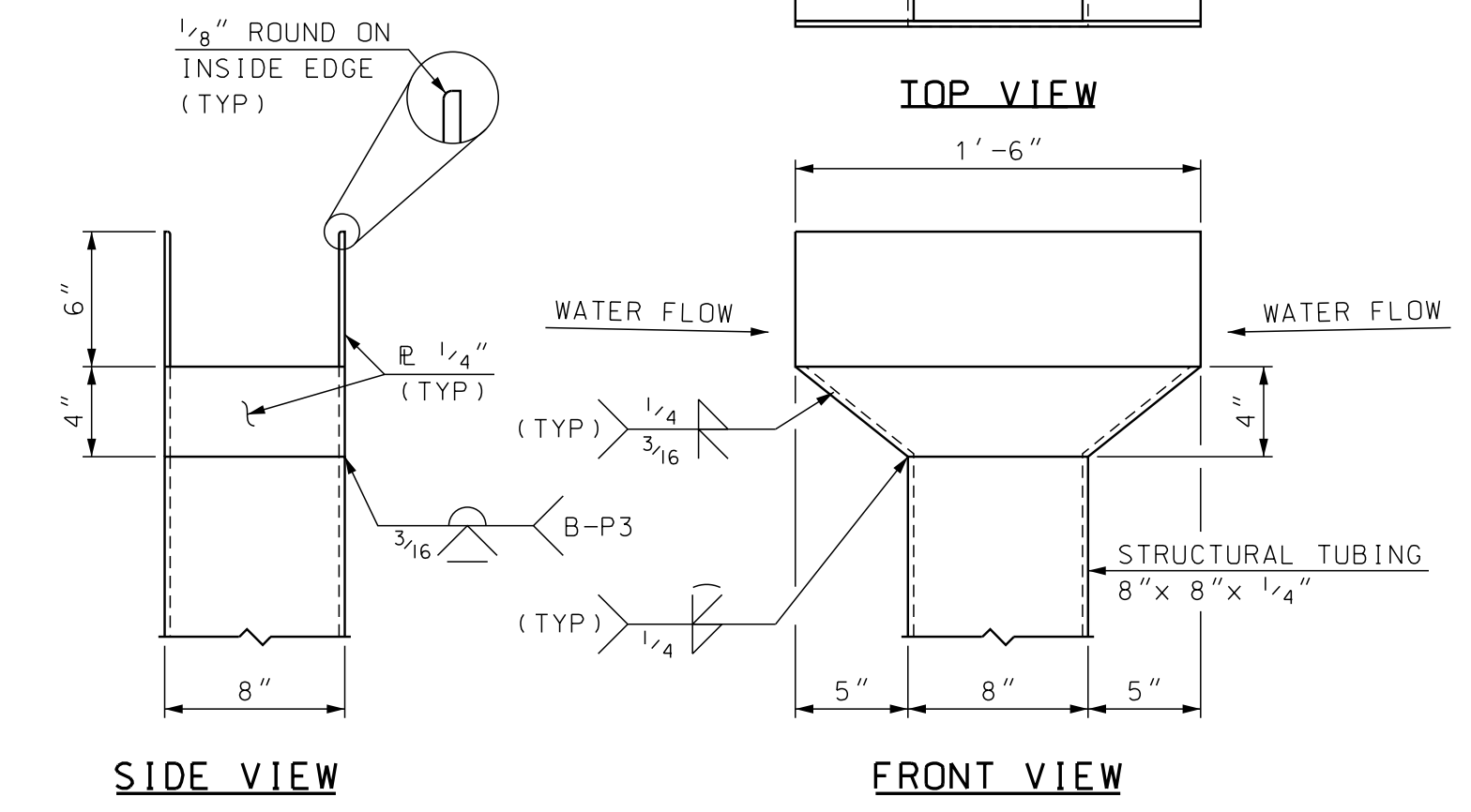


TYPICAL TOP FLANGE CLIP
 NOT TO SCALE

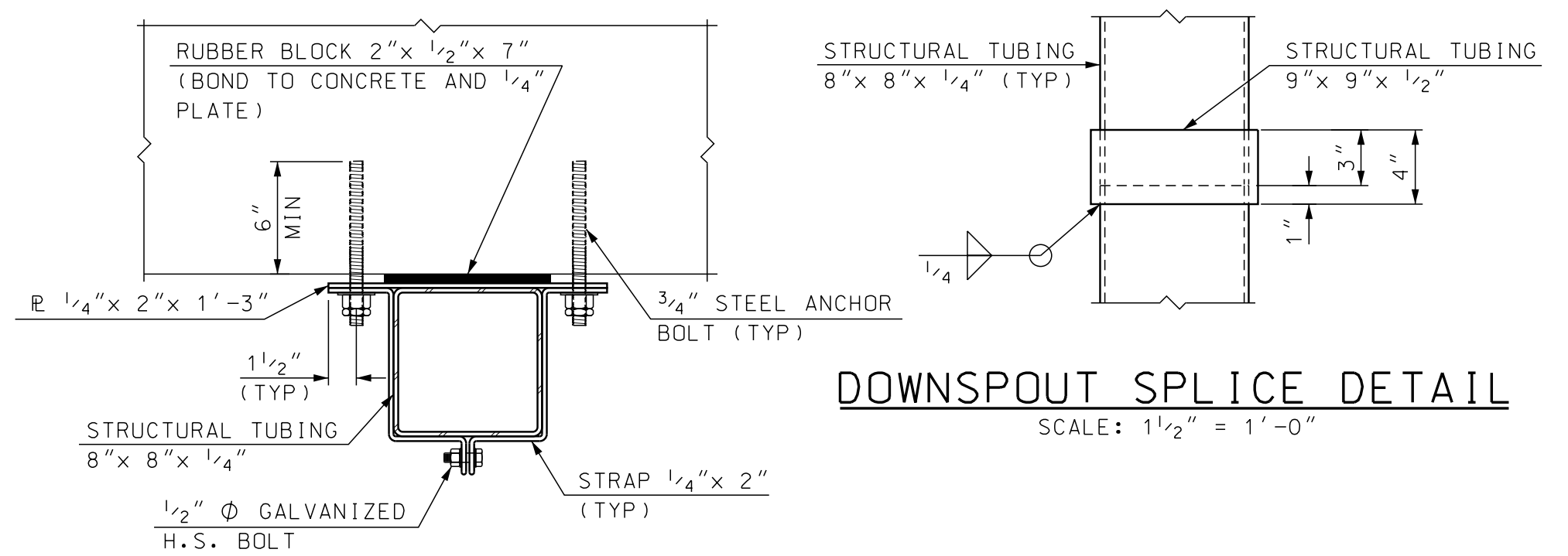


NOTE: NORTH HOPPER DIMENSIONS SHOWN. DIFFERENT SOUTH HOPPER DIMENSIONS SHOWN IN ().

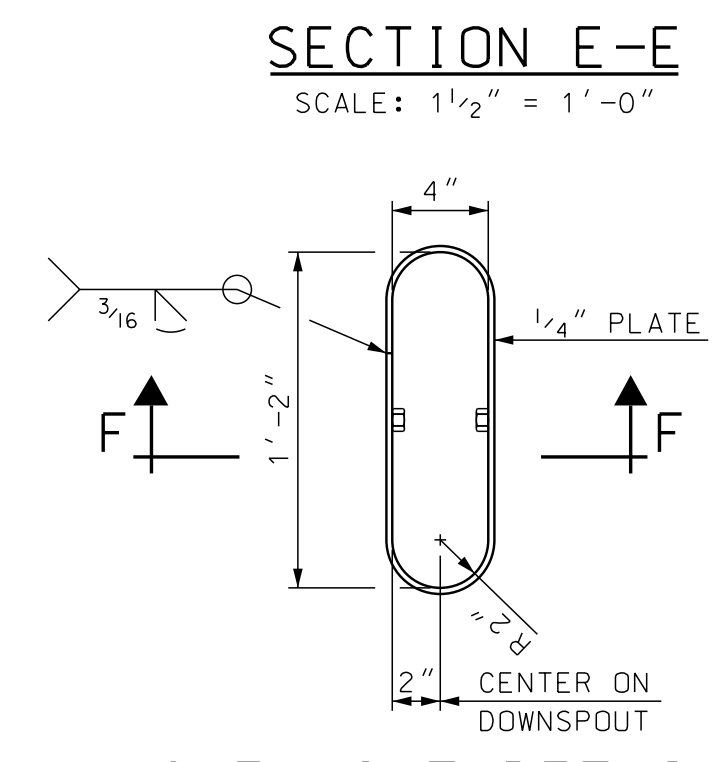
SECTION THRU Q OF HOPPER
 SCALE: 1/2" = 1'-0"



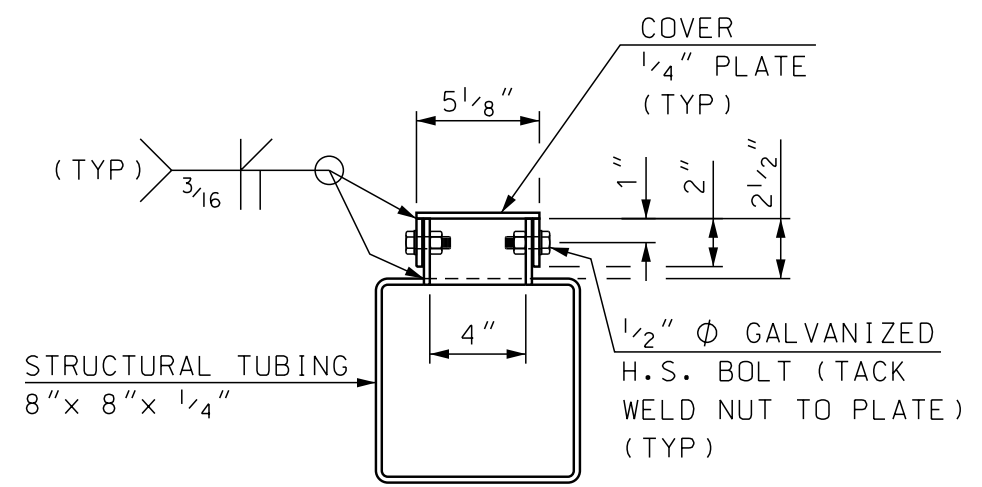
HOPPER DETAIL
 SCALE: 1 1/2" = 1'-0"



DOWNSPOUT SPLICE DETAIL
 SCALE: 1 1/2" = 1'-0"



CLEANOUT DETAIL
 SCALE: 1 1/2" = 1'-0"
 (COVER REMOVED)



SECTION F-F
 SCALE: 1 1/2" = 1'-0"

REVISIONS 5/9/2019

SAMPLE PLAN
 DATE: 03-2016

STATE OF NEW HAMPSHIRE									
DEPARTMENT OF TRANSPORTATION * BUREAU OF BRIDGE DESIGN									
TOWN	CONCORD	BRIDGE NO.	162/184	STATE PROJECT	40405	BRIDGE SHEET			
LOCATION 1-393 EASTBOUND OVER SOUCCOOK RIVER						9 OF XX			
FINGER PLATE EXP. JOINT (ITEM 561.3001) (3 OF 3)						FILE NUMBER			
REVISIONS AFTER PROPOSAL		BY	DATE	CHECKED	XXX XX/XX	9 OF XX			
		DESIGNED	XXX XX/XX	CHECKED	XXX XX/XX	FILE NUMBER			
		DRAWN	GMC 3/16	CHECKED	CKN 3/16	XX-X-X			
		QUANTITIES	GMC 3/16	CHECKED	CKN 3/16	TOTAL SHEETS			
		ISSUE DATE		FEDERAL PROJECT NO.		SHEET NO.		1	
		REV. DATE				1		1	

SUBDIRECTORY	.DGN LOCATOR	SHEET SCALE
BRC/162_184EB	40405ExpJA162-184	AS NOTED