

Construction Cost Index

New Hampshire Department of Transportation

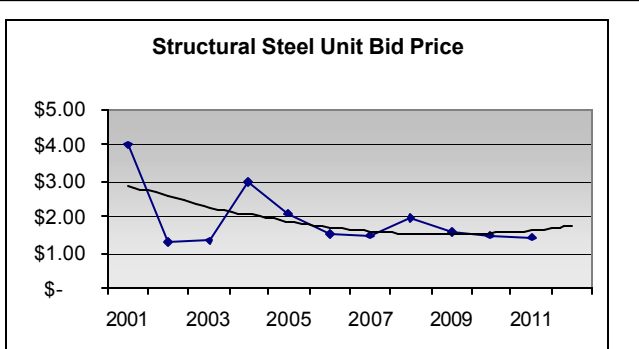
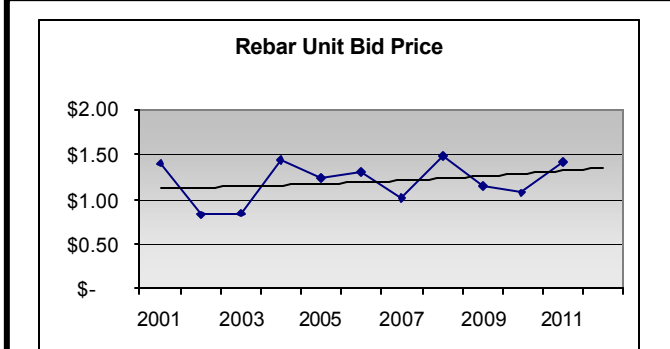
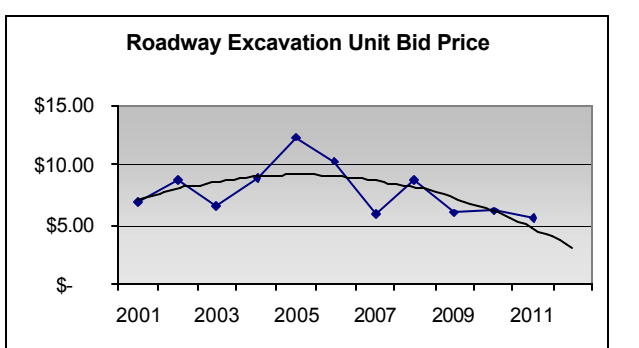
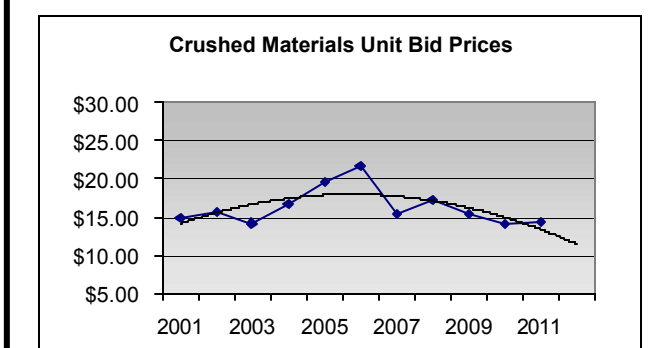
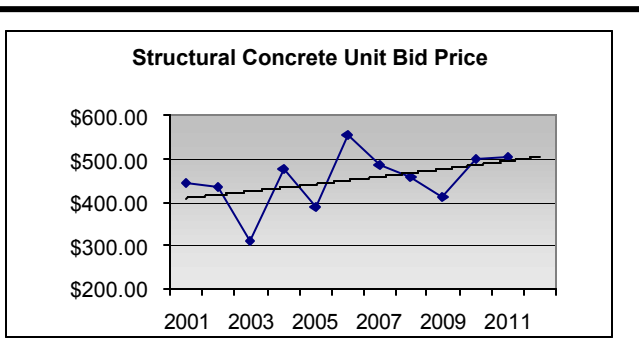
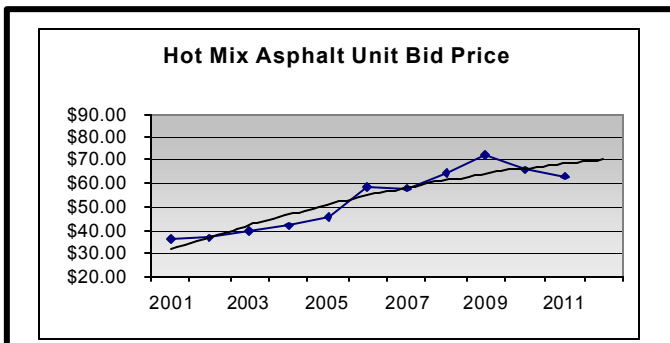
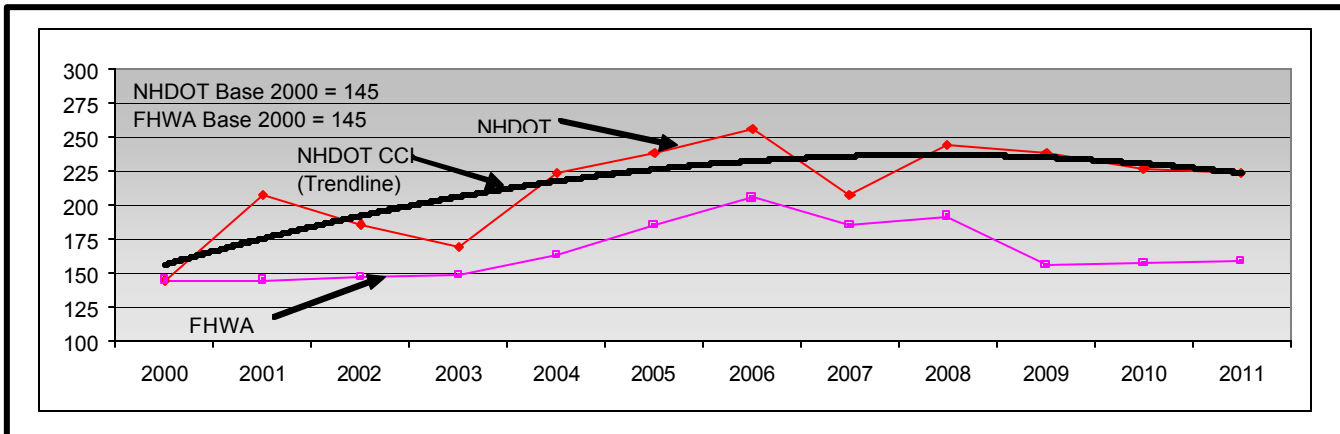


New Hampshire DOT Bureau of Construction
4th Quarter, 2011



Construction Cost Indices for the 2nd Half of 2011

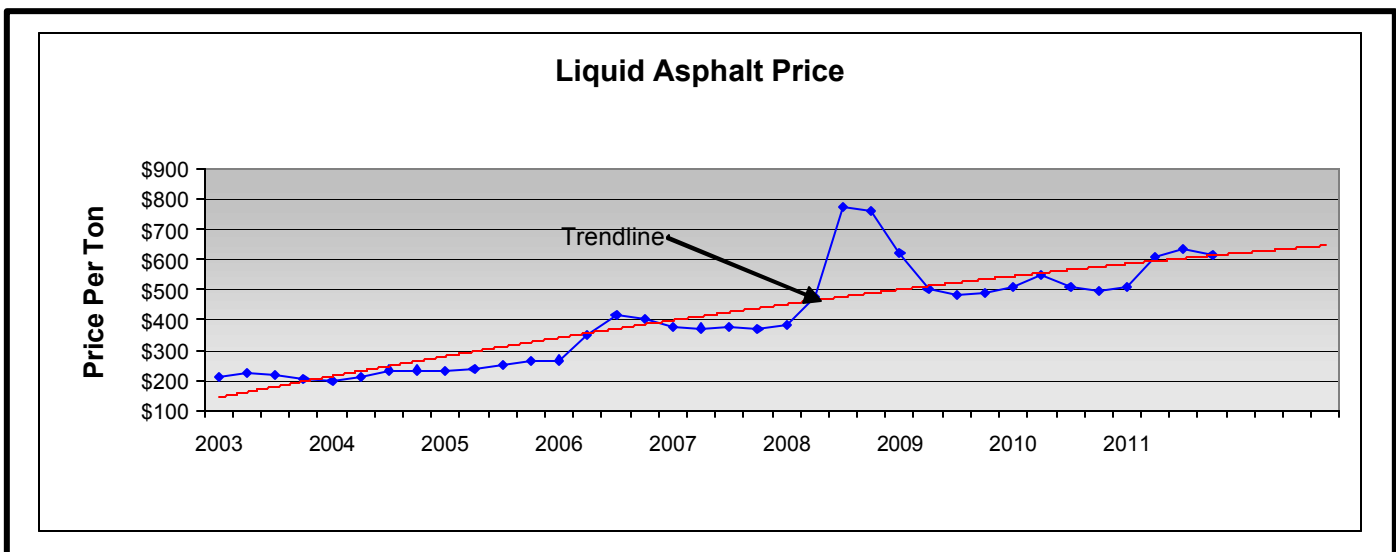
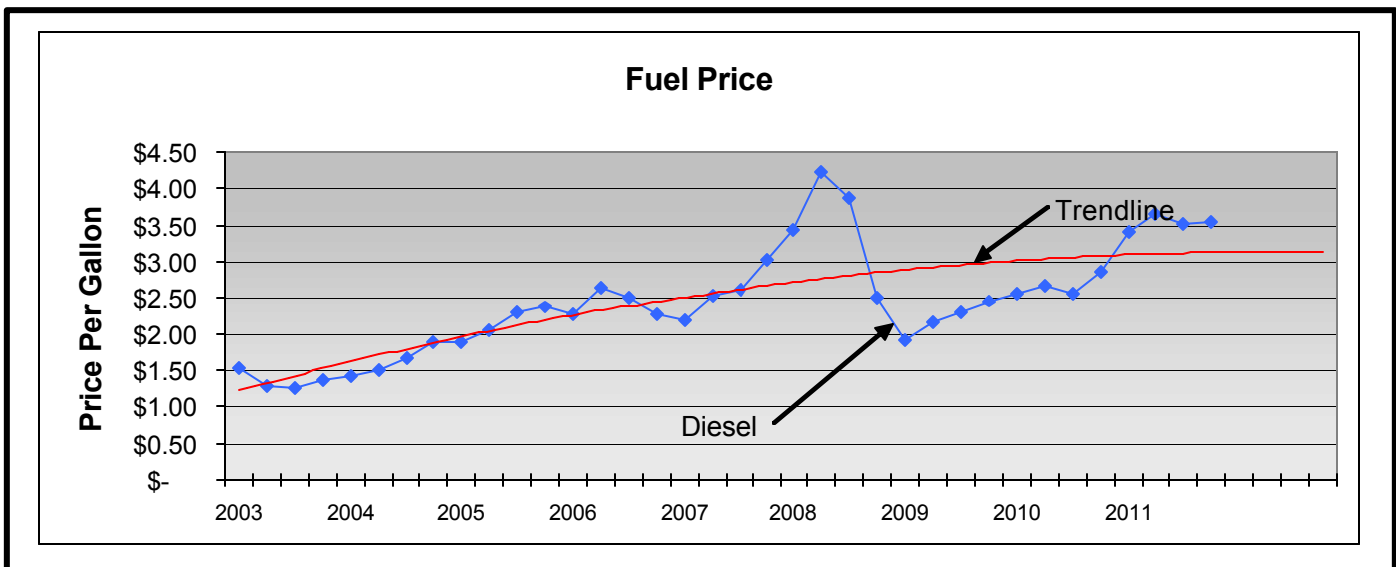
NHDOT Base 2000 = 145; FHWA Base 2000 = 145



The 2011 construction season had the index showing a 3 year downward trend to 224, which represents an overall decrease of 8.6% since 2008 (245). Since 2009 the average price of fuel has increased 84% to \$3.53, while liquid asphalt has remained relatively flat. Liquid asphalt finished the year at \$613/ton, and HMA is down 13.4% to \$62.86. Four of the six categories showed little movement in 2011, Crushed Material and Structural Steel remained flat at \$14.51/ton and \$1.46/lb respectively, while Structural Concrete and Roadway Excavation showed less volatility than previous years. Only the ReBar category was up 33.3% for 2011.

The following Components (weighted as Shown) are used to compute the NHDOT CCI:	
Hot Mix Asphalt	42%
Crushed Material	16%
Roadway Excavation	14%
Steel	13%
Concrete	11%
ReBar	4%

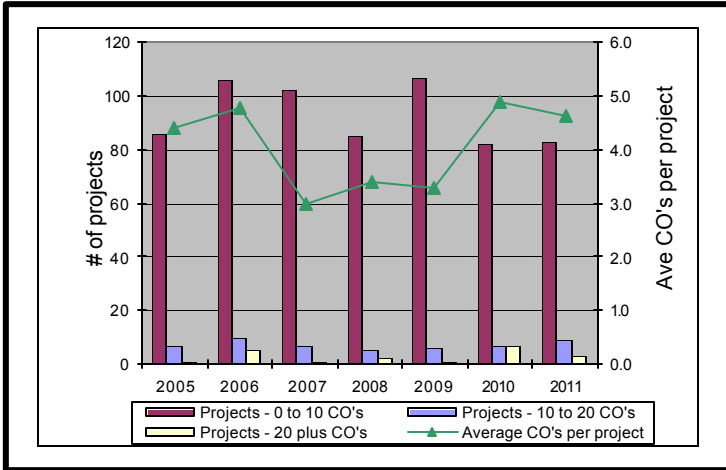
NHDOT Fuel & Liquid Asphalt Prices



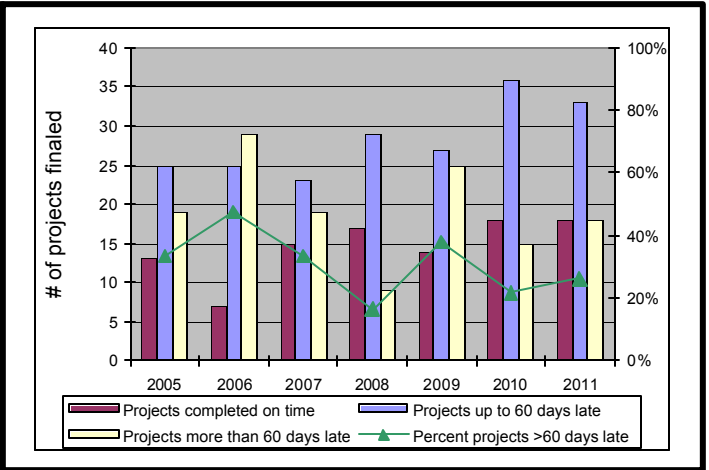
Construction Bureau Performance Measures

Compiled by State Fiscal Year

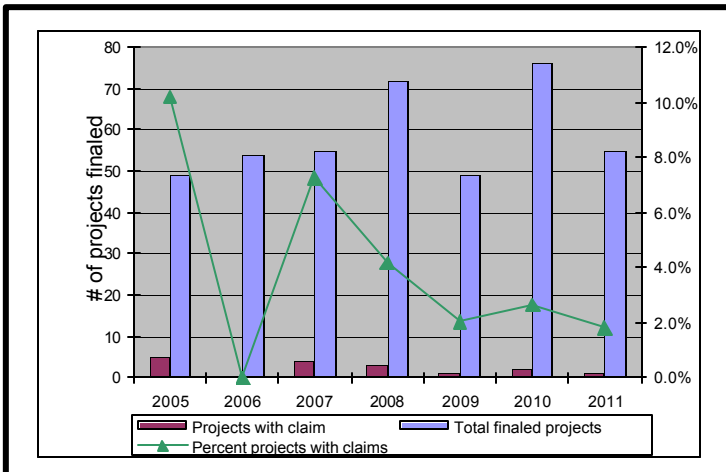
CHANGE ORDERS



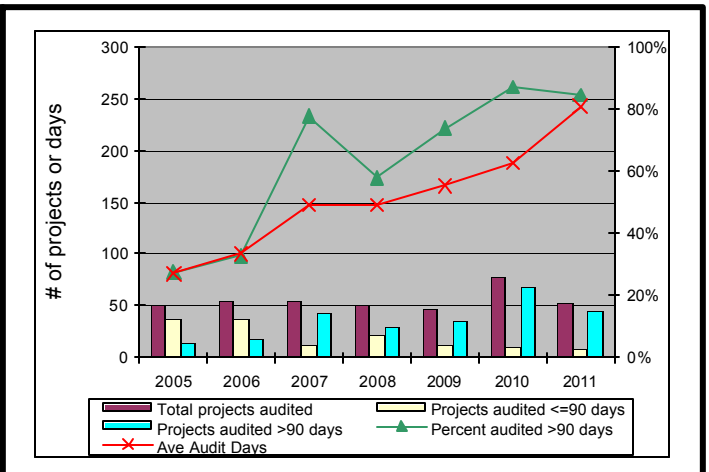
CONTRACT DURATION



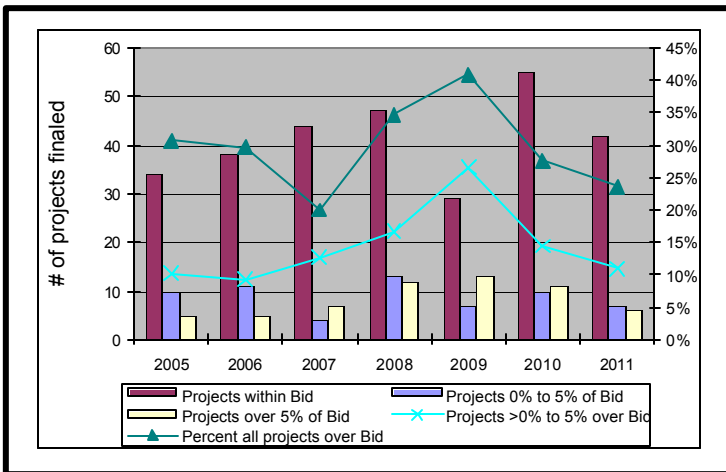
CONTRACTOR CLAIMS



PROJECT AUDIT



BIDS vs. FINAL AMOUNTS



PROJECT ACTIVITY

