

Construction Cost Index

New Hampshire Department of Transportation

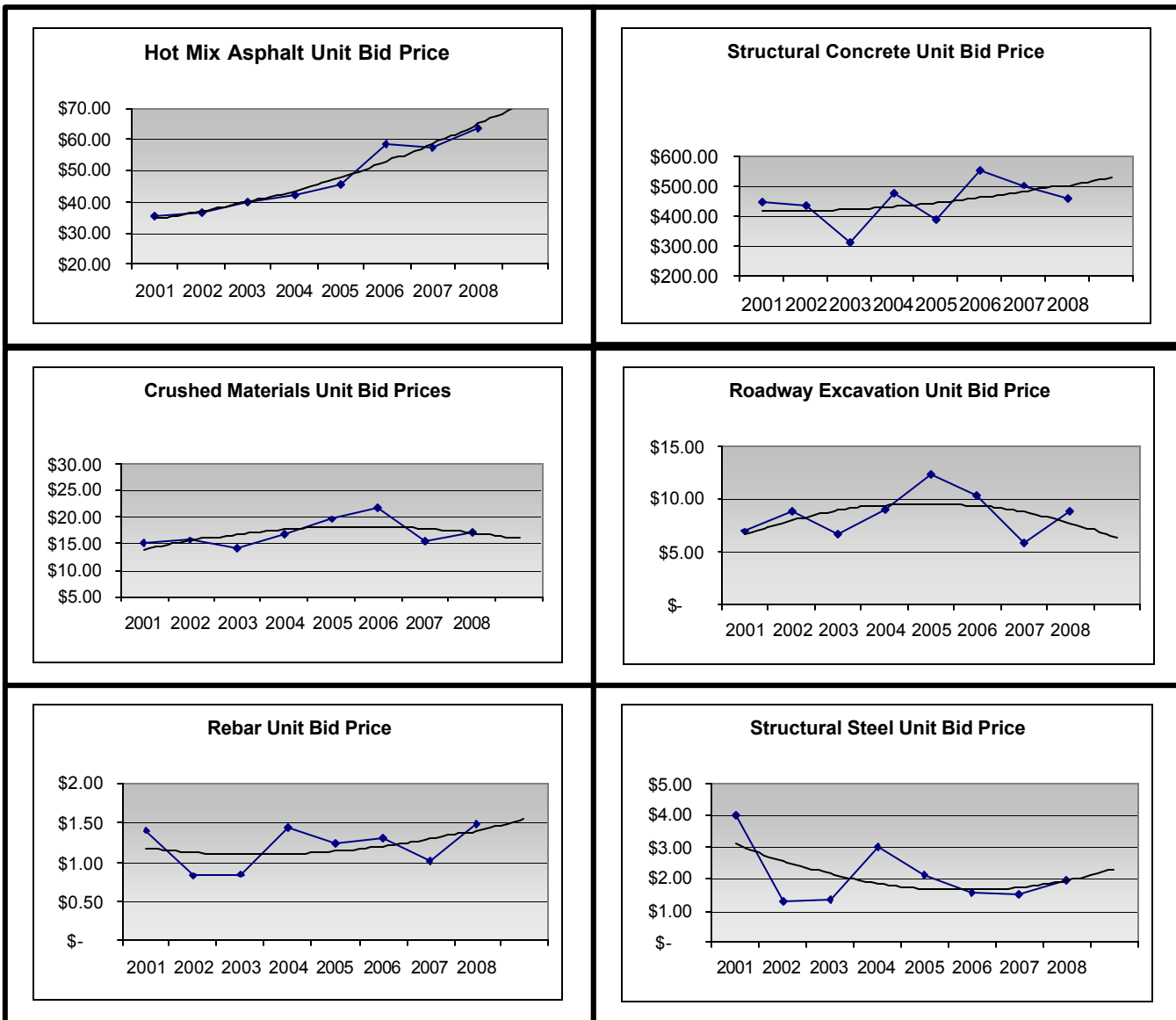
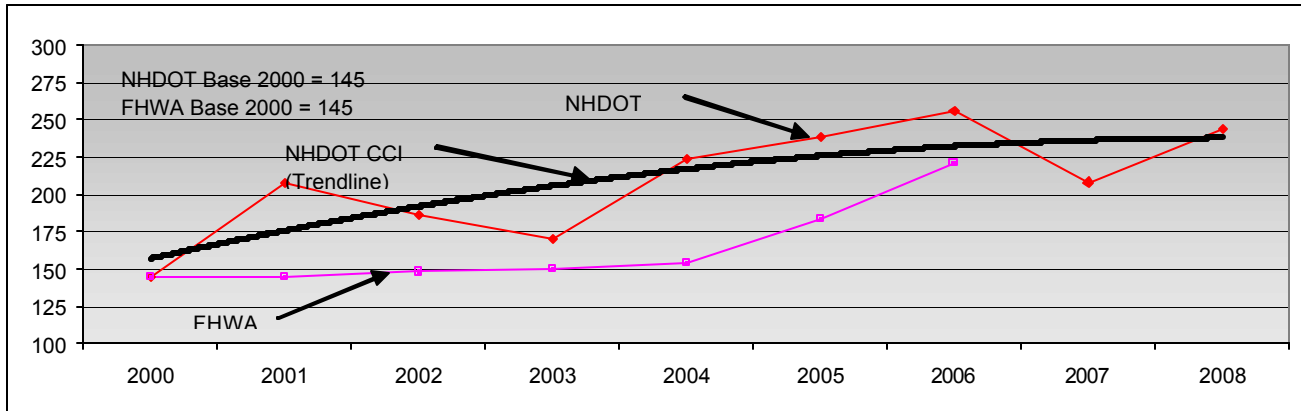


New Hampshire DOT Bureau of Construction
4th Quarter, 2008



Construction Cost Indices through 4th Quarter, 2008

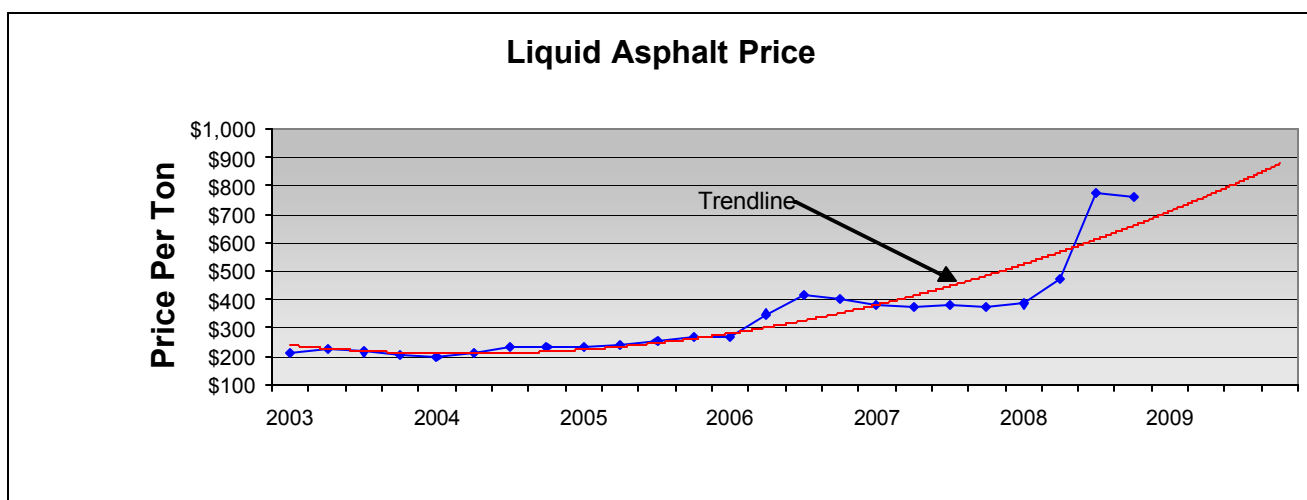
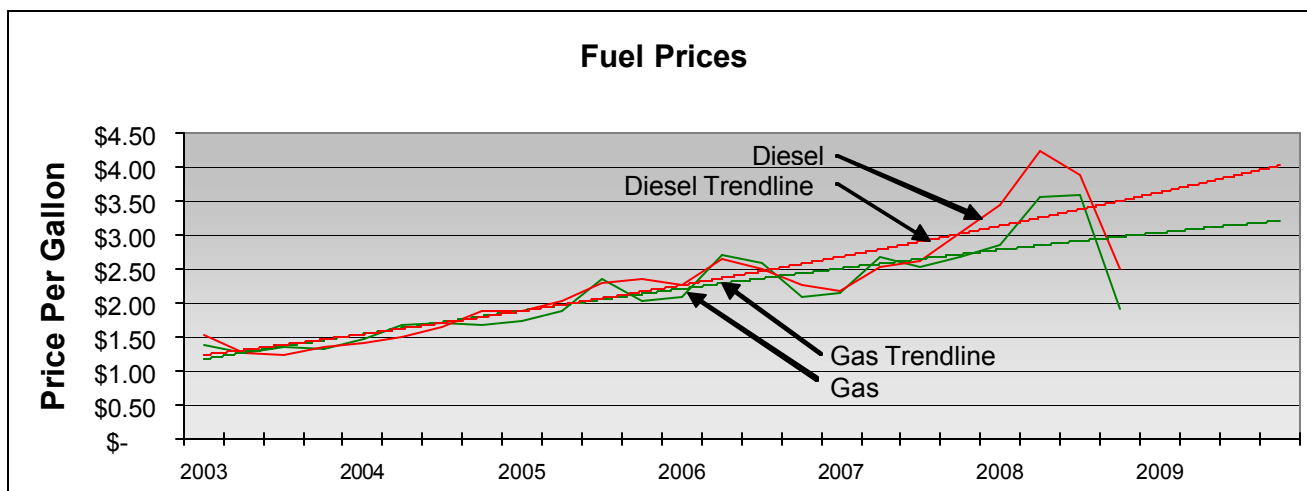
NHDOT Base 2000 = 145; FHWA Base 2000 = 145



The 4th quarter of 2008 showed the index remaining flat at 244, down from 245 (third quarter), which represents a 17.4% increase in relation to the 2007 index. The average weighted cost of materials increased across all but one of the categories of the NHDOT CCI. The most significant increase was in Roadway Excavation and Rebar at close to 50% over the 2007 price. The cost for excavation rose for the first three quarters of 2008 but leveled off with the receding fuel prices. The price of liquid asphalt continued to rise through September, which has contributed to the HMA price rising almost 11% over the 2007 price. It now appears that the dip the Index showed in 2007 may have only been temporary as the Index reached the levels attained for the 3 preceding years (2004-2006).

The following Components (weighted as shown) are used to compute the NHDOT CCI:	
Hot Mix Asphalt	36%
Crushed Material	17%
Roadway Excavation	17%
Steel	13%
Concrete	12%
ReBar	5%

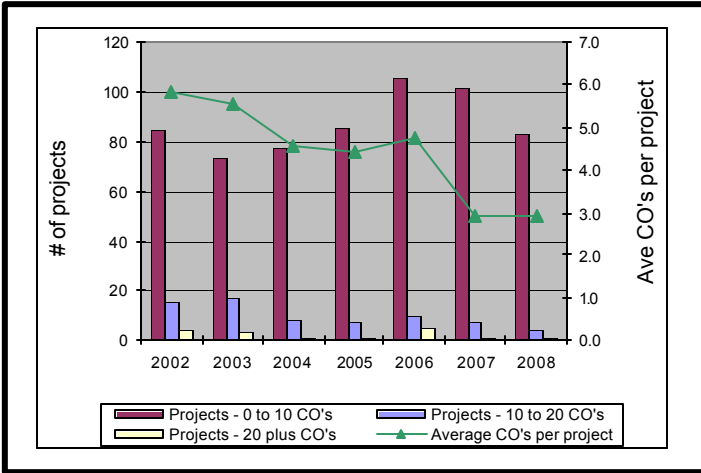
NHDOT Fuel & Asphalt Prices



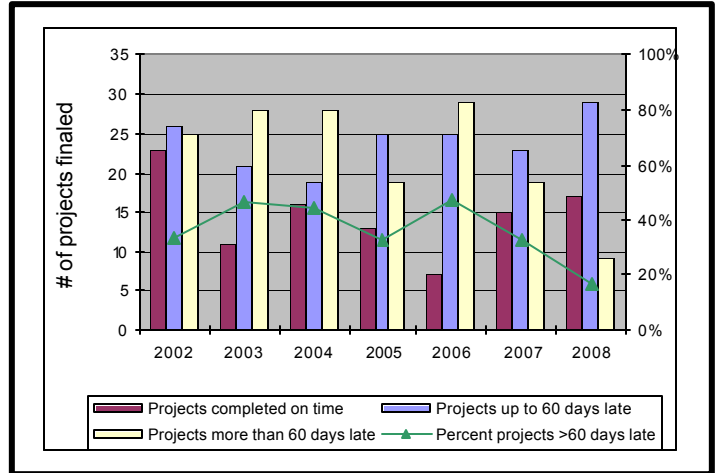
Construction Bureau Performance Measures

Compiled by State Fiscal Year

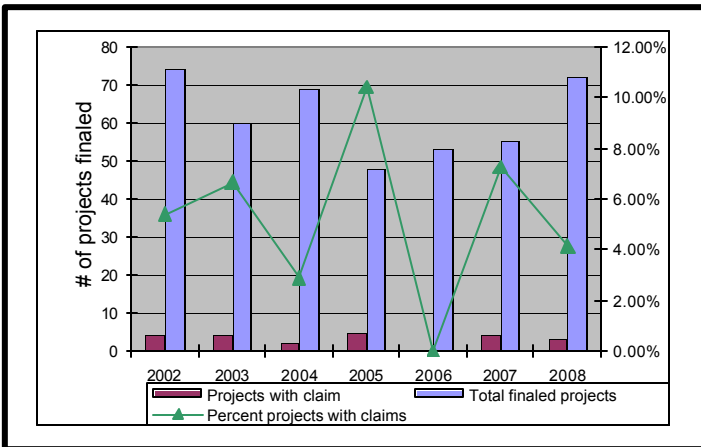
CHANGE ORDERS



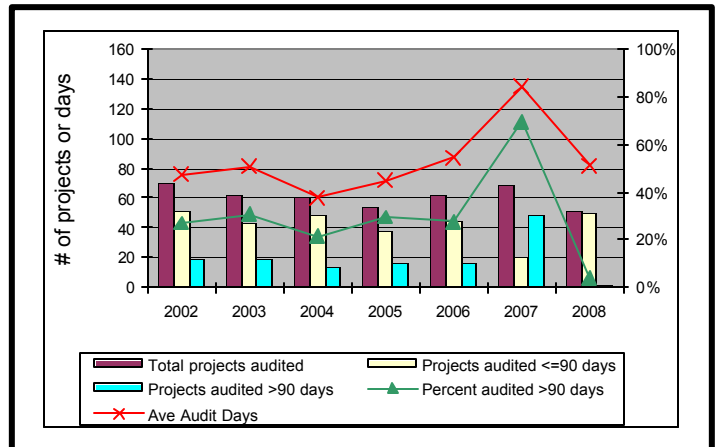
CONTRACT DURATION



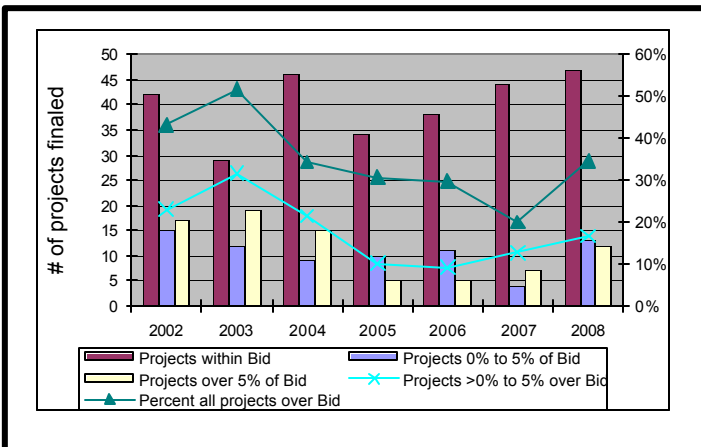
CONTRACTOR CLAIMS



PROJECT AUDIT



BIDS vs. FINAL AMOUNTS



PROJECT ACTIVITY

