



# Jaffrey US 202 (Part A)

Advisory Committee #7  
July 10, 2018



# STUDY/PROJECT SCHEDULE RECAP

Phase 1 (Spring/Summer 2017)  
Data Collection/Problem Identification

Phase 2 (Fall 2017/Winter/Spring 2018)  
Develop, Evaluate, & Screen Alternatives

Phase 3 (Summer/Fall 2018)  
Environmental Documentation

Anticipated Construction 2022-2024

**Proposed Action**

# THE PROBLEM



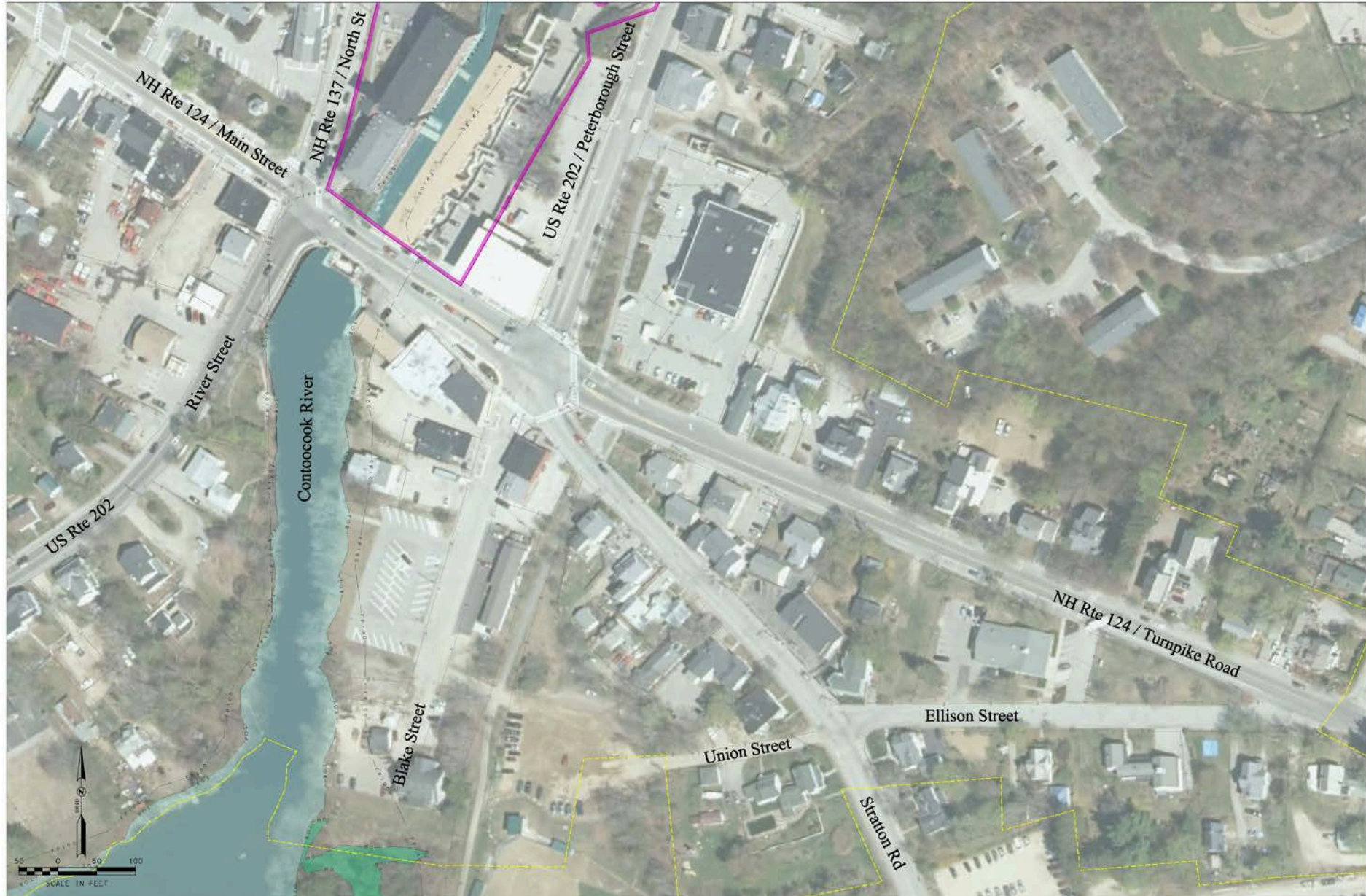
# TSM ALTERNATIVE



# INTERIM SIGNAL ENHANCEMENTS







# INITIAL SCREENING OF ALTERNATIVES

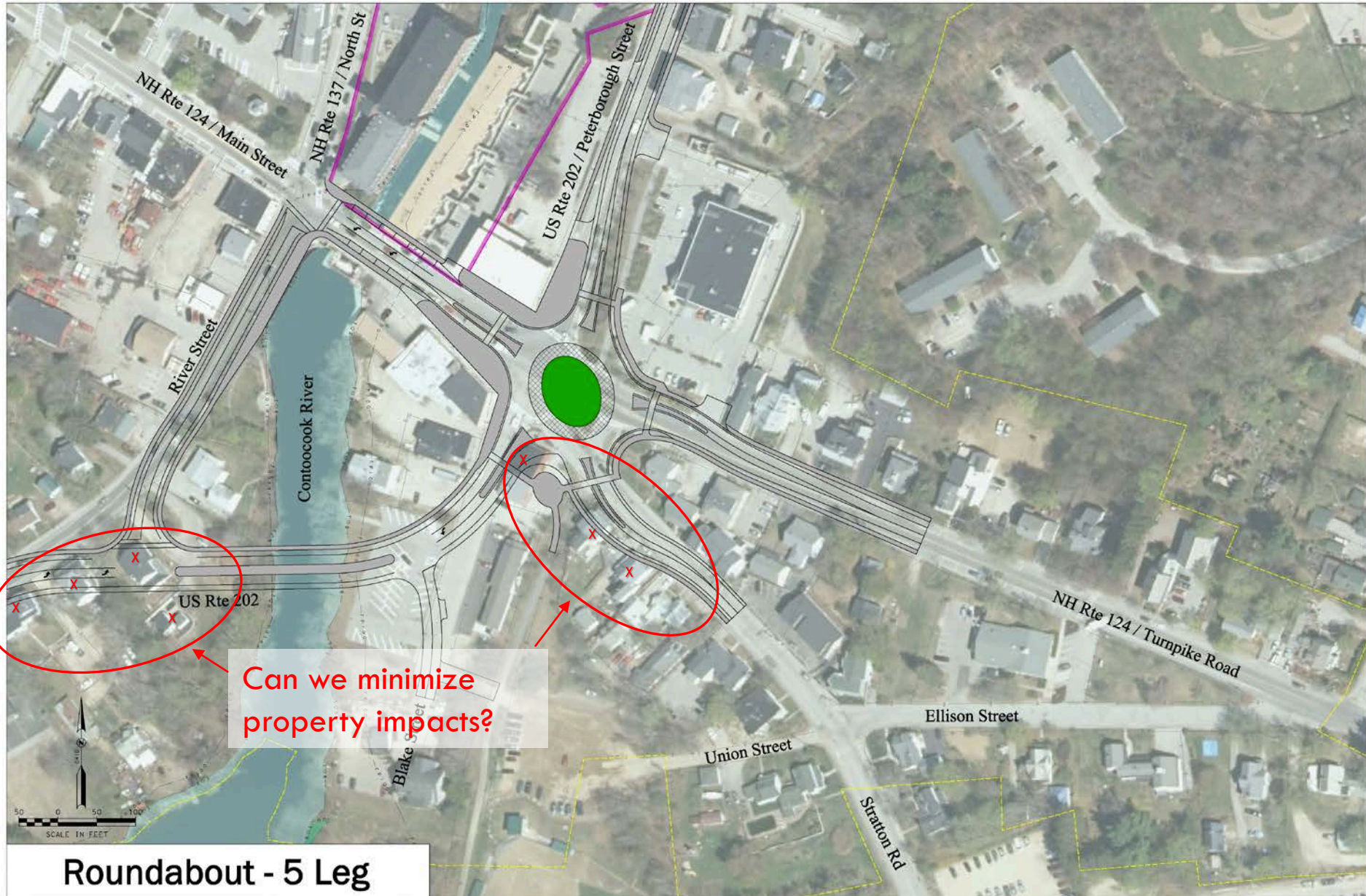
		No Build	Alignment Alternatives			Intersection Alternatives			
			Alt 1	Alt 2	Alt 3	Five-Leg Signal	Four-Leg Signal	Five-Leg Roundabout	Four-Leg Roundabout
<b>Meets Project Purpose?</b>		No	Yes	Yes	Yes	Yes	Yes	Yes	Yes
<b>Construction Cost (2018 Dollars)</b>			\$4.8 M	\$9.4 M	\$14.8 M	\$2.4 M	\$2.4 M	\$ 2.1 M	\$1.9 M
<b>Impacts</b>	<b>Metric</b>								
<b>Wetlands</b>	Wetland Impact (acres)	0	0.0	0.9	1.2	0	0	0	0
	Contoosook River Bank Impacts (lin ft)	0	15	292	38	0	0	0	0
	Other Stream Impacts (lin ft)	0	0	393	392	0	0	0	0
<b>Water Quality</b>	New Impervious Surface (acres)	0	0.5	2.0	2.0	0.2	0.3	0.2	0.2
<b>Floodplain</b>	100-year Floodplain Fill (acres)	0	0.0	0.9	1.3	0	0	0	0
	Floodway Impacts?	No	No	Yes	Yes	No	No	No	No
<b>Groundwater Resources</b>	New Impervious Surface - Stratified Drift (acres)	0	0.3	0.5	0.7	0.3	0.4	0.3	0.3
	New Impervious Surface - WHPA (acres)	0	0.0	0.1	0.4	0.0	0.1	0.0	0.1
<b>Threatened and Endangered Species/Habitat</b>	Tree Clearing -Potential NLEB Impact (acres)	0	0.1	1.8	2.2	0.0	0.0	0.0	0.0
	# State-Listed Populations Potentially Impacted	0	0	0	0	0	0	0	0
<b>Public Parks &amp; Recreation</b>	LWCF Property Impacts (acres)	0	0	0	1.1 (Community Park)	0	0	0	0
	# of Recreation Sites Impacted	0	0	0	1 (Community Park)	1 (Bissell Alderman Park)	1 (Bissell Alderman Park)	1 (Bissell Alderman Park)	1 (Bissell Alderman Park)
<b>Right-of-Way</b>	# of Parcels Impacted (Full or Partial)	0	14	20	14	7	8	9	4
	Structure Impacts	0	4 - Residential 0 - Commercial	8 - Residential 0 - Commercial	6 - Residential 0 - Commercial	0 - Residential 1 - Commercial	0 - Residential 1 - Commercial	2 - Residential 1 - Commercial	0 - Residential 1 - Commercial
<b>Cultural Resources</b>	# of Known Individually-Eligible Historic Properties Directly Affected	0	0	0	0	0	0	0	0
	# of Contributing Elements Directly Affected	0	3	3	2	1	1	2	1
	Archaeologically-Sensitive Area (acres)	0	0.3	3.1	2.0	0.1	0.1	0.1	0.1





**Roundabout - 5 Leg**

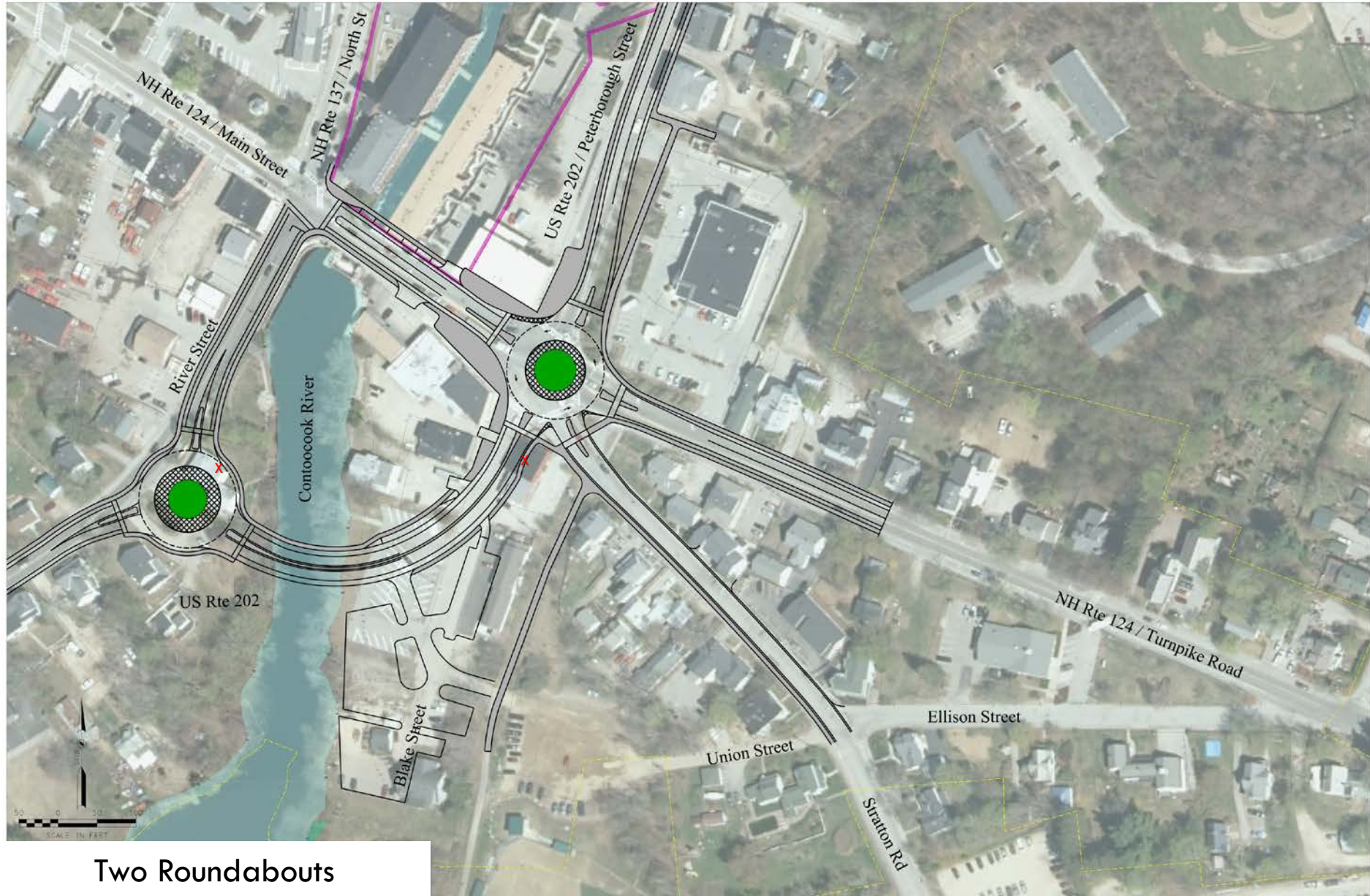




Roundabout - 5 Leg

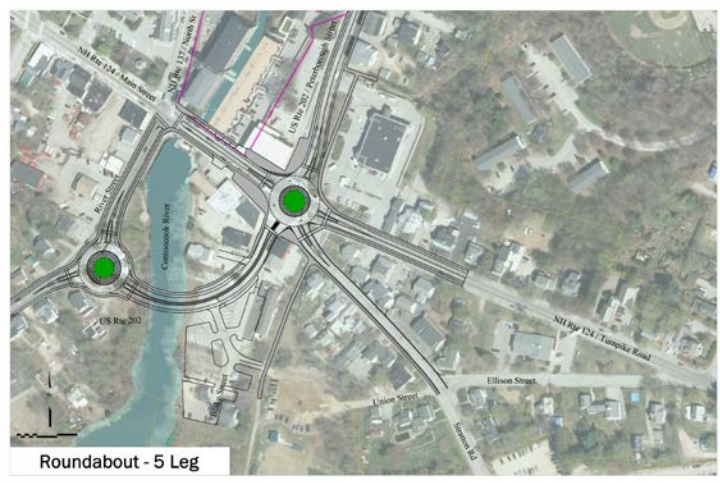


# TO REDUCE PROPERTY IMPACTS



Two Roundabouts





Roundabout - 5 Leg



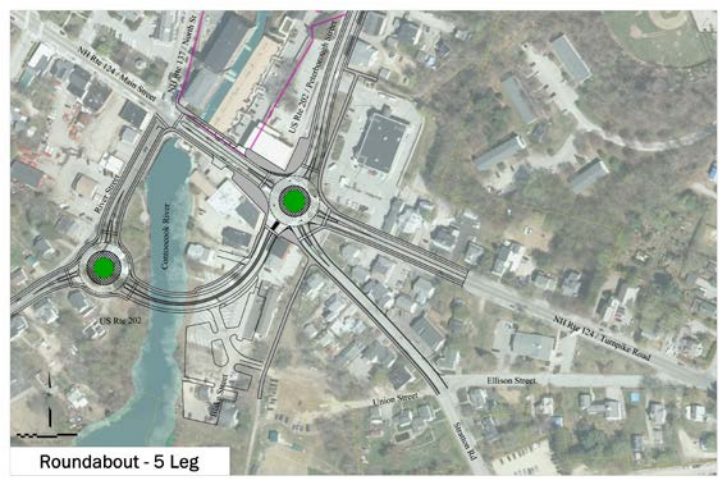




Roundabout - 5 Leg



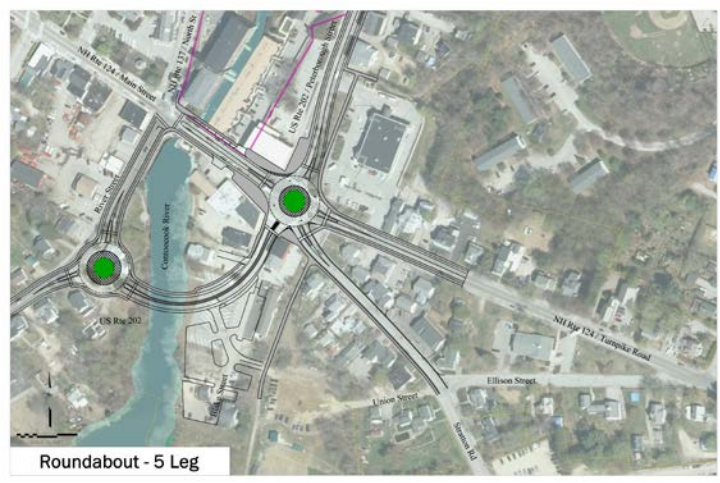




Roundabout - 5 Leg



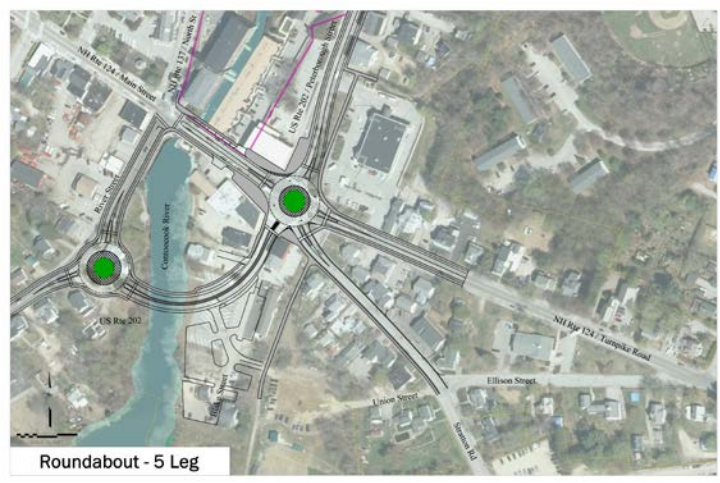




Roundabout - 5 Leg



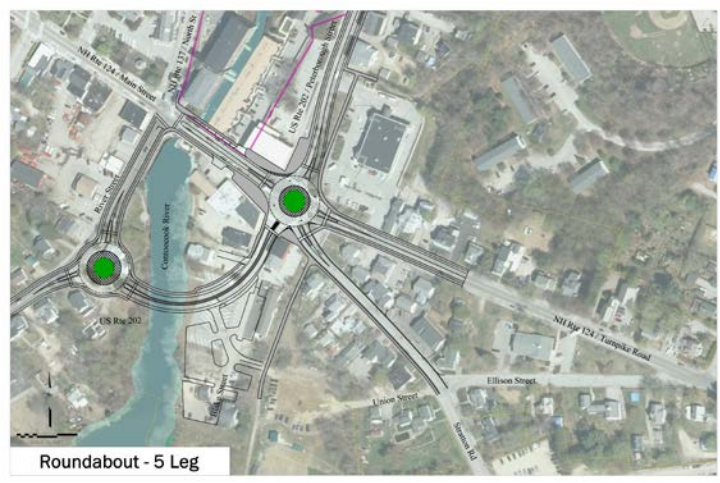




Roundabout - 5 Leg





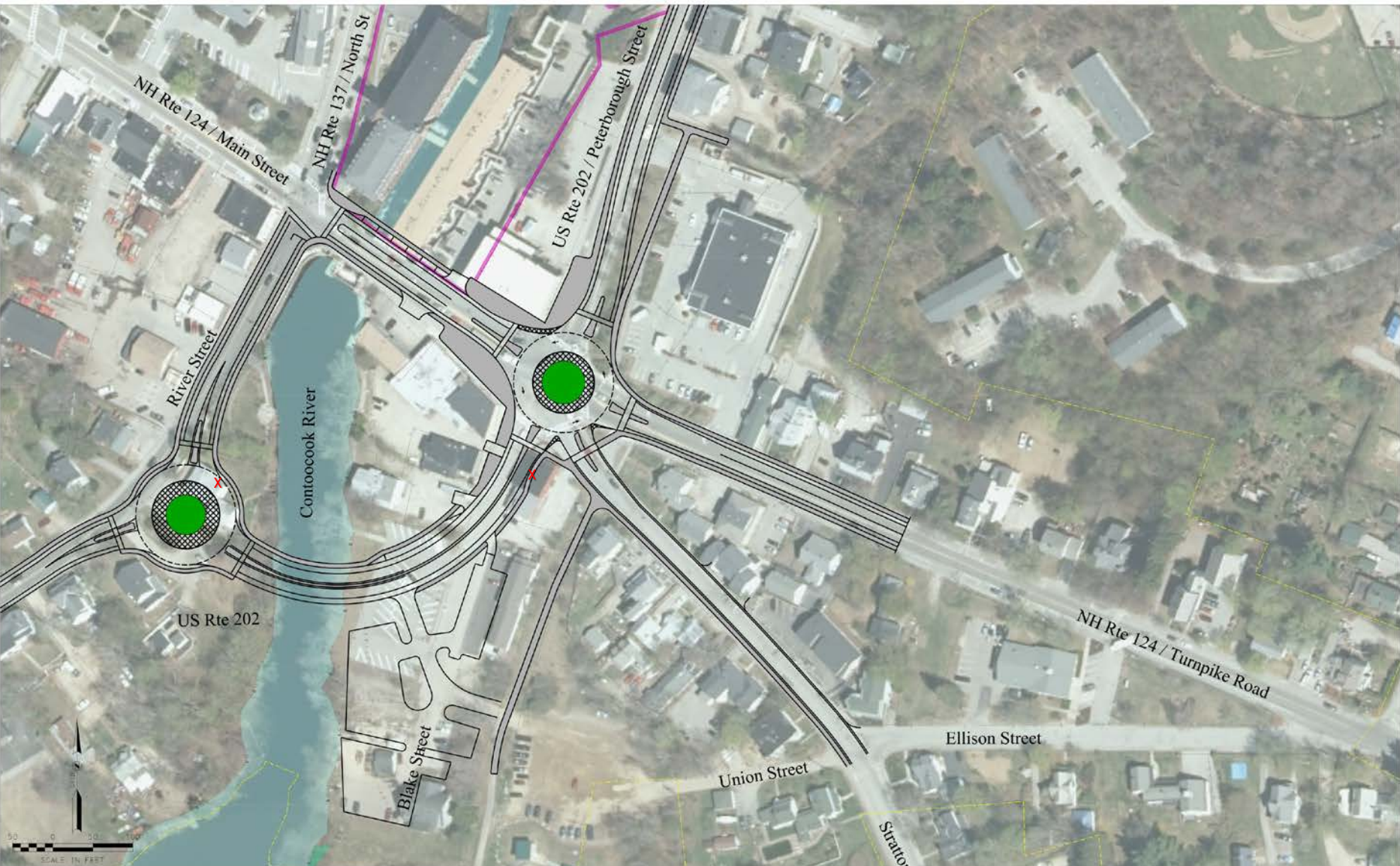


Roundabout - 5 Leg





# WHAT ABOUT ON-STREET PARKING?



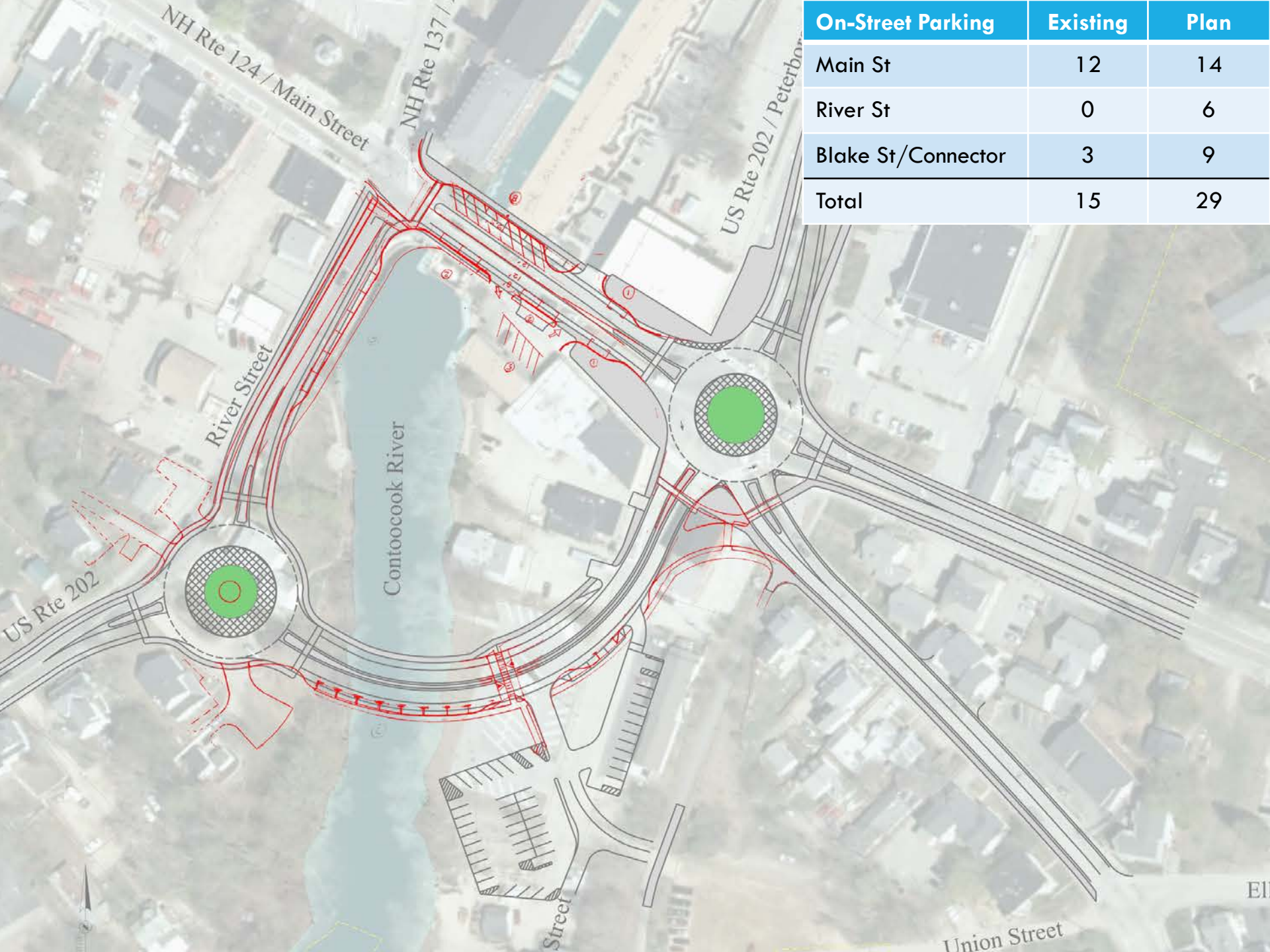
Two Roundabouts



# 15 EXISTING ON-STREET PARKING SPACES







On-Street Parking	Existing	Plan
Main St	12	14
River St	0	6
Blake St/Connector	3	9
<b>Total</b>	<b>15</b>	<b>29</b>





# Jaffrey US 202 (Part A)

Advisory Committee #7  
July 10, 2018

New Hampshire  
**DOT**  
Department of Transportation

