



Jaffrey US 202 (Part A)

Public Informational Meeting # 3
November 15, 2018



Advisory Committee

Advisory Committee	
Max Mitchell	Chamber of Commerce
Stephanie Niemela	TEAM Jaffrey
John Peard	Downtown Business
Keith Dupuis	Industrial Business
Carolyn Garretson	Conservation Commission
Don Stewart	Citizen at Large
Ed Merrell	Planning Board
David Reilly	Schools

Town Staff	
Jon Frederick	Town Manager
Frank Sterling	Select Board
Randy Heglin	Public Works
Bill Oswalt	Police
David Chamberlain	Fire
Jo Anne Carr	Planning

Context Sensitive Design

Context Sensitive Design is an approach to design, which has been adopted by the NHDOT, that recognizes that a roadway itself, by the way it is integrated within the community can have impacts (positive and negative) beyond its transportation function.



Study/Project Schedule Recap

Phase 1 (Spring/Summer 2017)
Data Collection/Problem Identification

Phase 2 (Fall 2017/Winter/Spring 2018)
Develop, Evaluate, & Screen Alternatives

Phase 3 (Summer 2018/Winter 2019)
Proposed Action, Environmental Documentation, Public Hearing

Anticipated Construction 2022-2024

Project Purpose

*The purpose of the project is to address the **traffic congestion and safety** related deficiencies associated with the current configuration of the US 202 dogleg intersections of Main Street with Peterborough Street and Main Street with River Street while enhancing **pedestrian mobility** and supporting the **quality of life** and the **economic vitality** of Jaffrey's downtown.*

The Process



MAY 2017
Advisory Committee
Data Collection

JUNE 2017
Advisory Committee
Purpose Statement

SEPT 2017
Advisory Committee
*Resource Mapping/
Future Traffic Demand*

FEB 2018
Advisory Committee
Alternatives

OCT 2017
Advisory Committee
Public Meeting Input

OCT 2017
Public Meeting
Listening Session

OCT 2017
Newsletter #1

FEB 2018
Public Workshop
Potential Solutions

MARCH 2018
Select Board
Initial Proposed Action

APRIL 2018
Newsletter #2

MAY 2018
Advisory Committee
Proposed Action

JULY 2018
Advisory Committee
On-Street Parking

OCT 2018
Advisory Committee
Refine Proposed Action

SEPT 2018
**Roundabout
Demonstration**

AUG 2018
**Property Owner
Meetings**

NOV 2018
Public Meeting
Proposed Action

Public Input

Project Website



The Problem



Inefficient Left Turn Movement



Expansive Pavement Surface



What's Missing? - Pedestrians



Public Workshop

February 20, 2018



Alternatives

- Transportation Systems Management (TSM)
- Build Alternatives

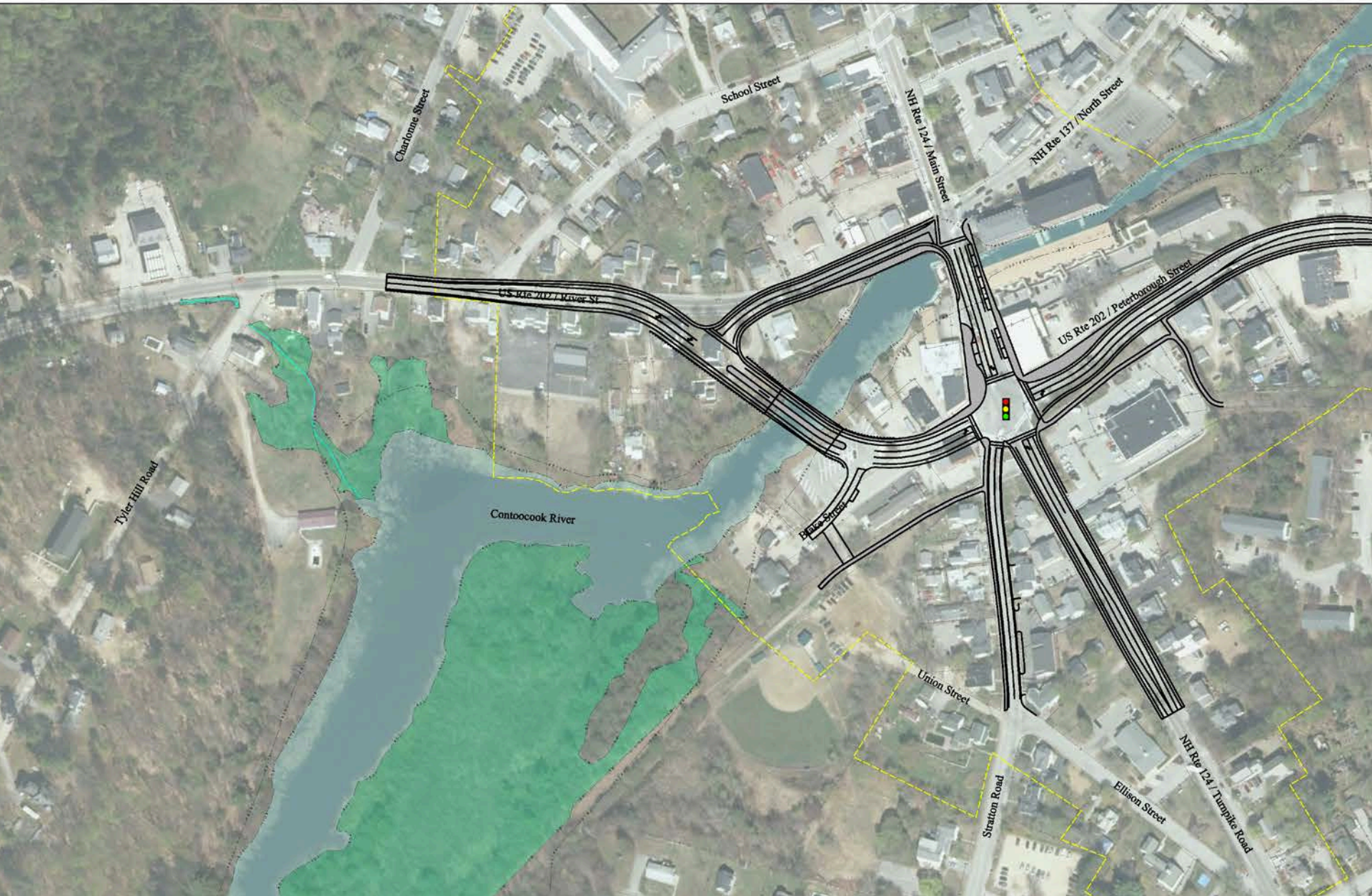
Interim Signal Enhancements



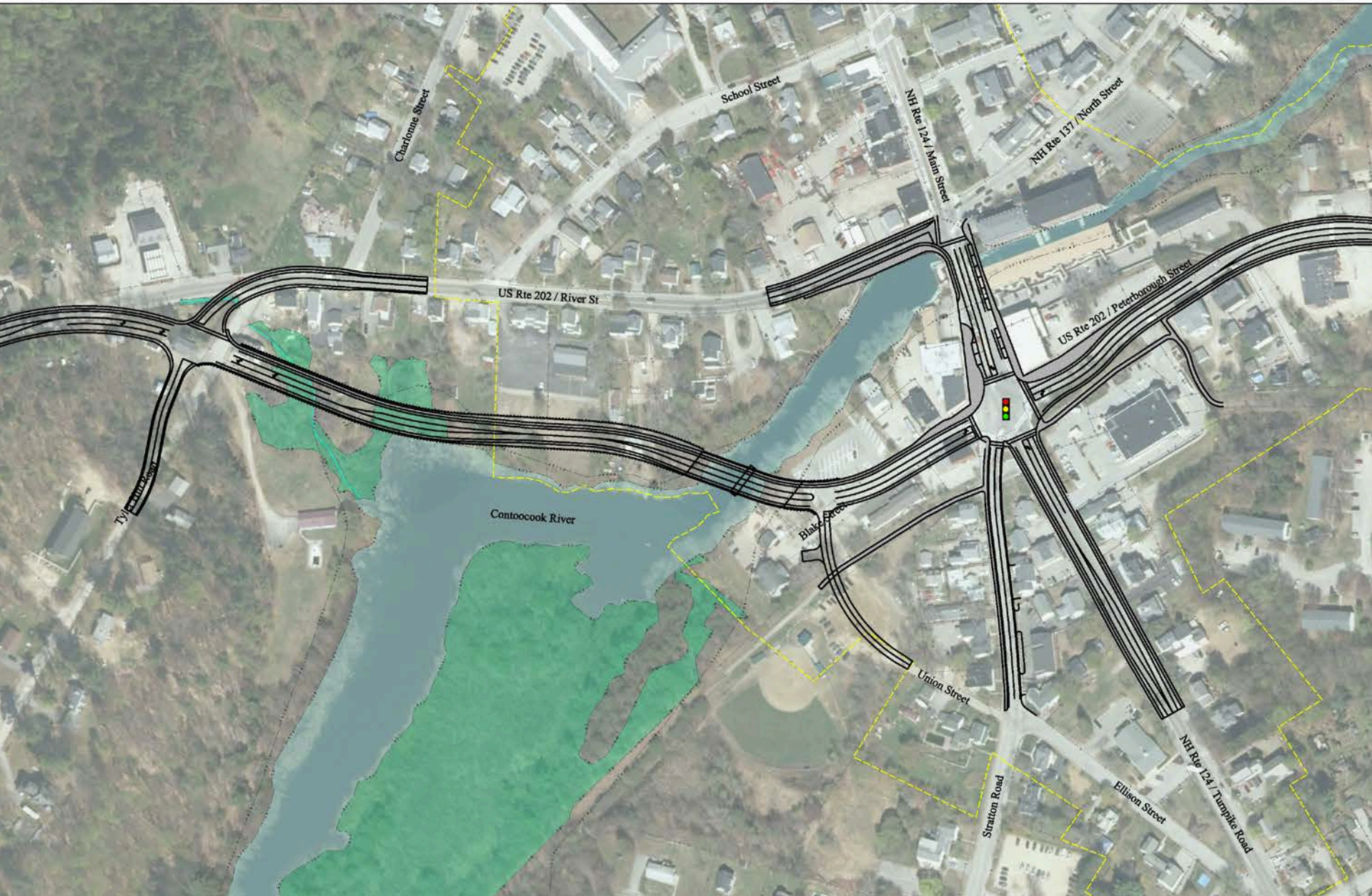
Build Alternatives



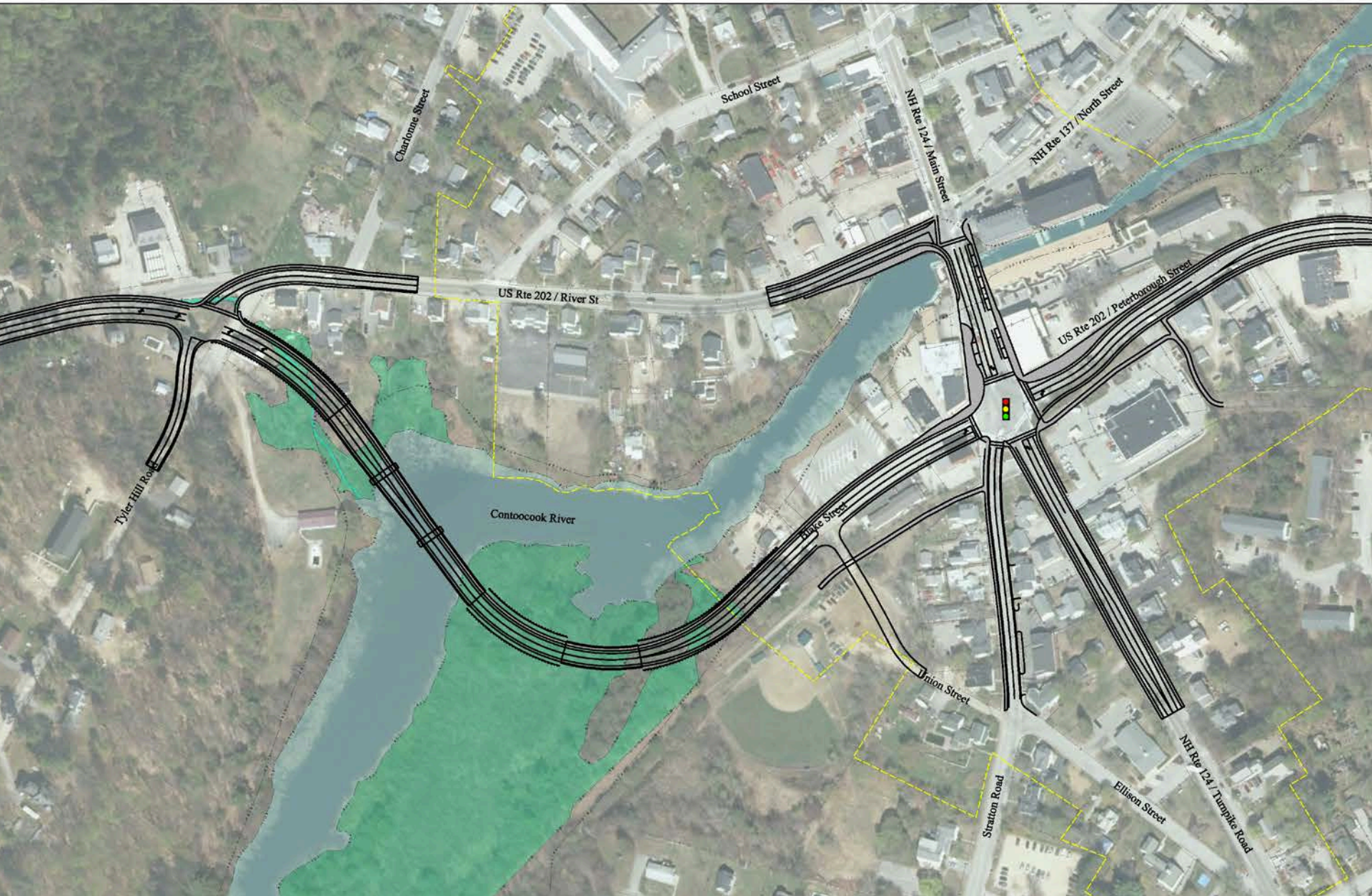
Alternative 1 Bridge



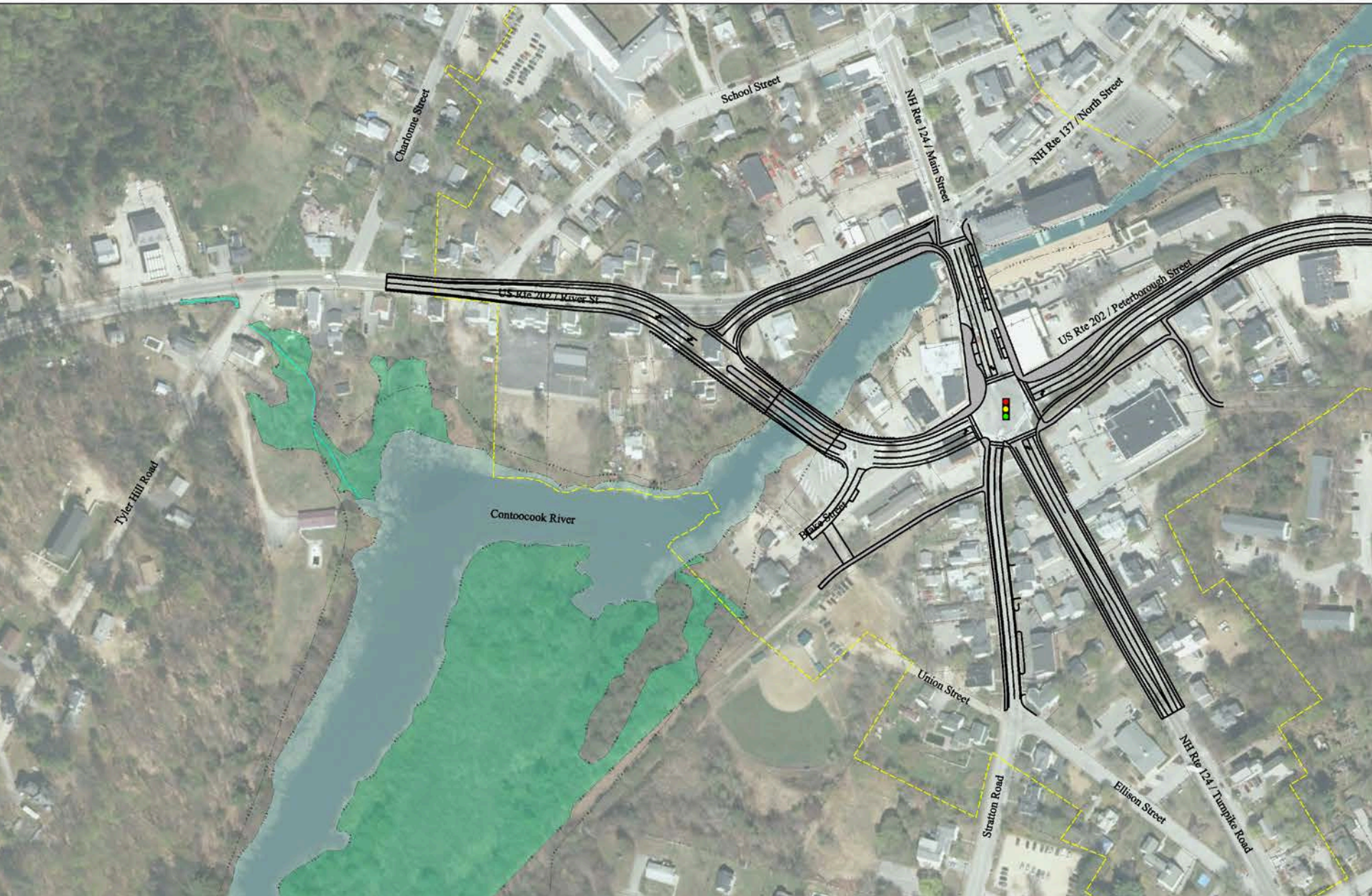
Alternative 2 Bridge



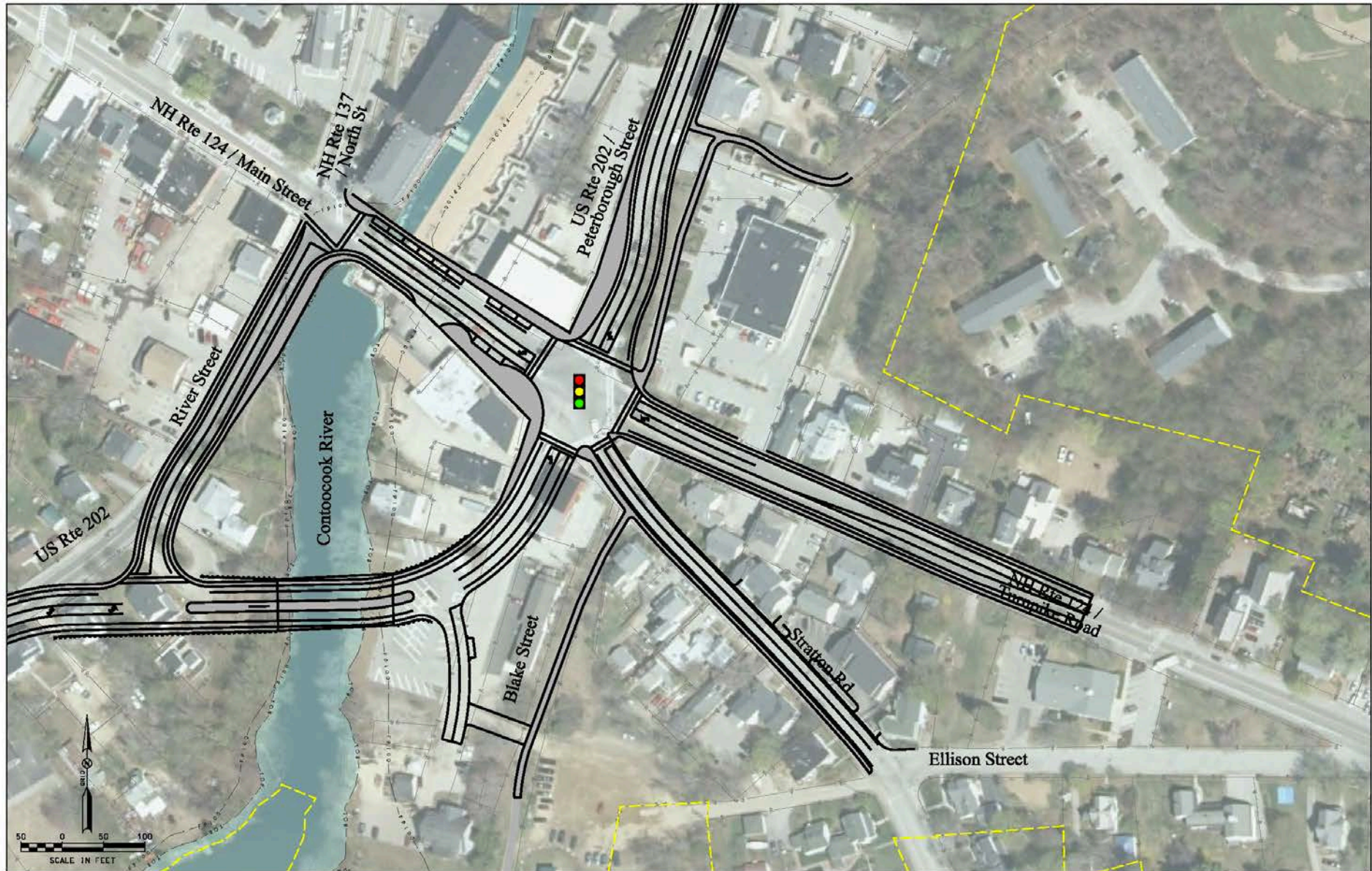
Alternative 3 Bridge



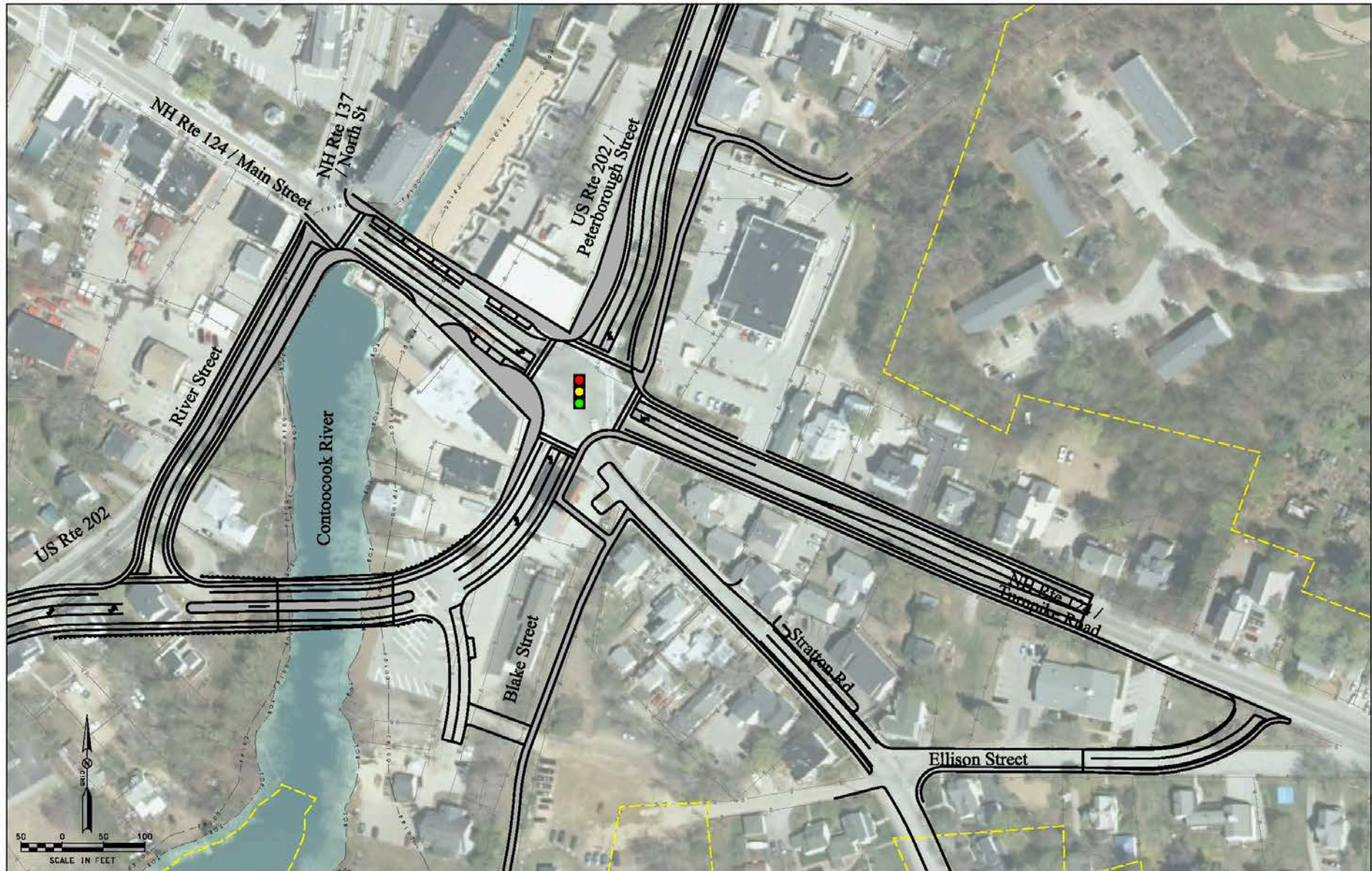
Alternative 1 Bridge



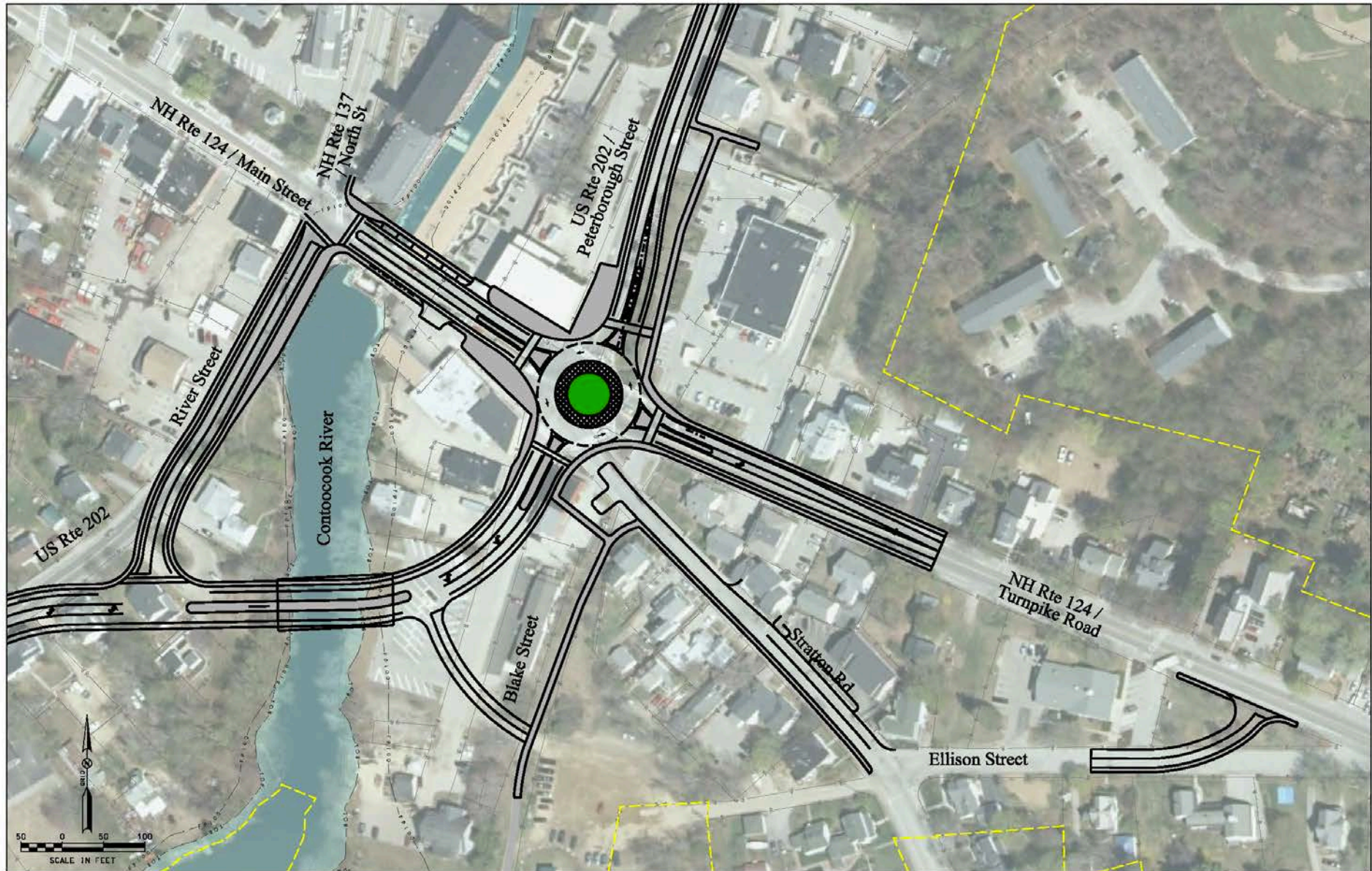
5-Leg Traffic Signal



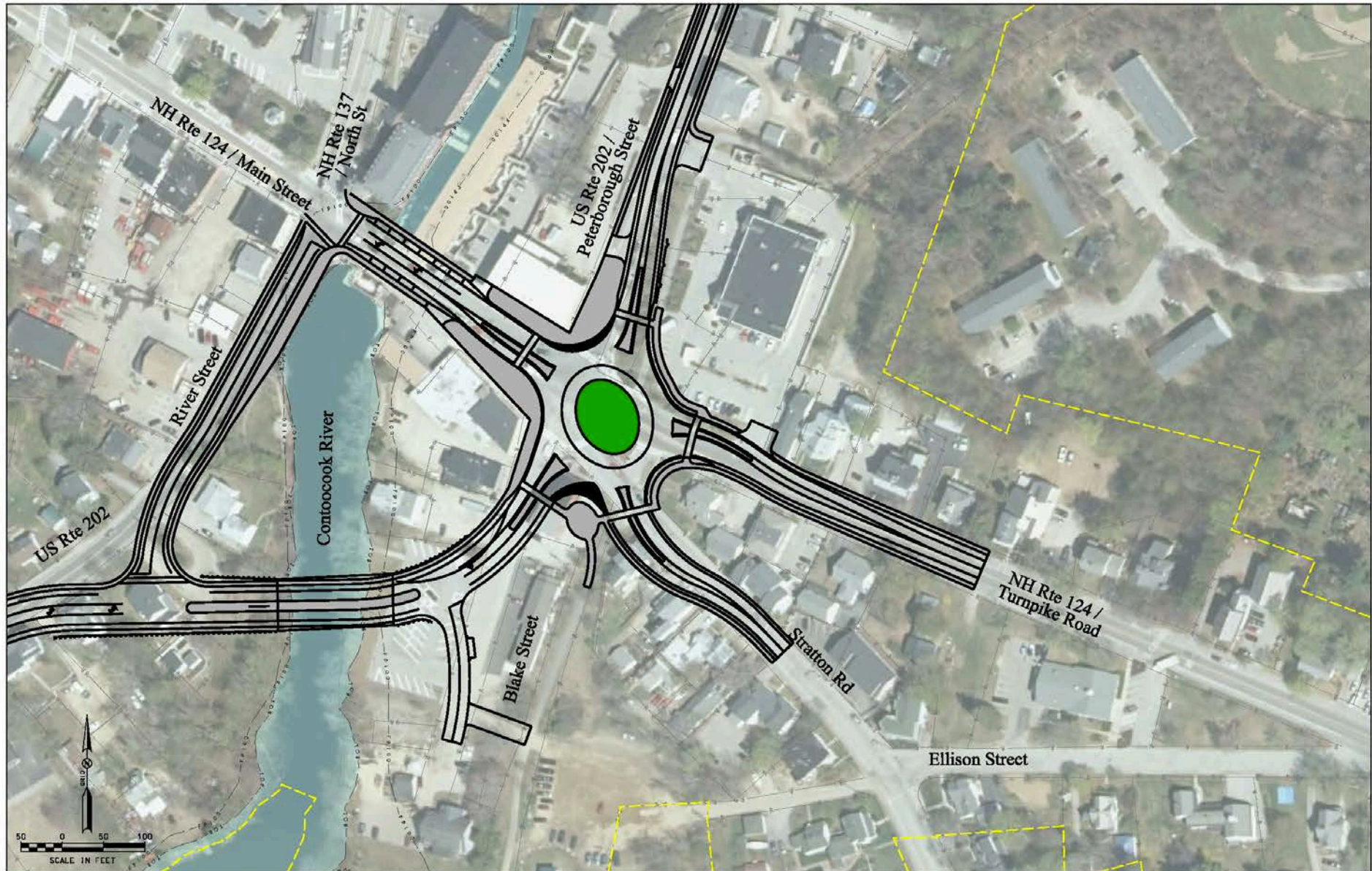
4-Leg Traffic Signal



4-Leg Roundabout



5-Leg Roundabout



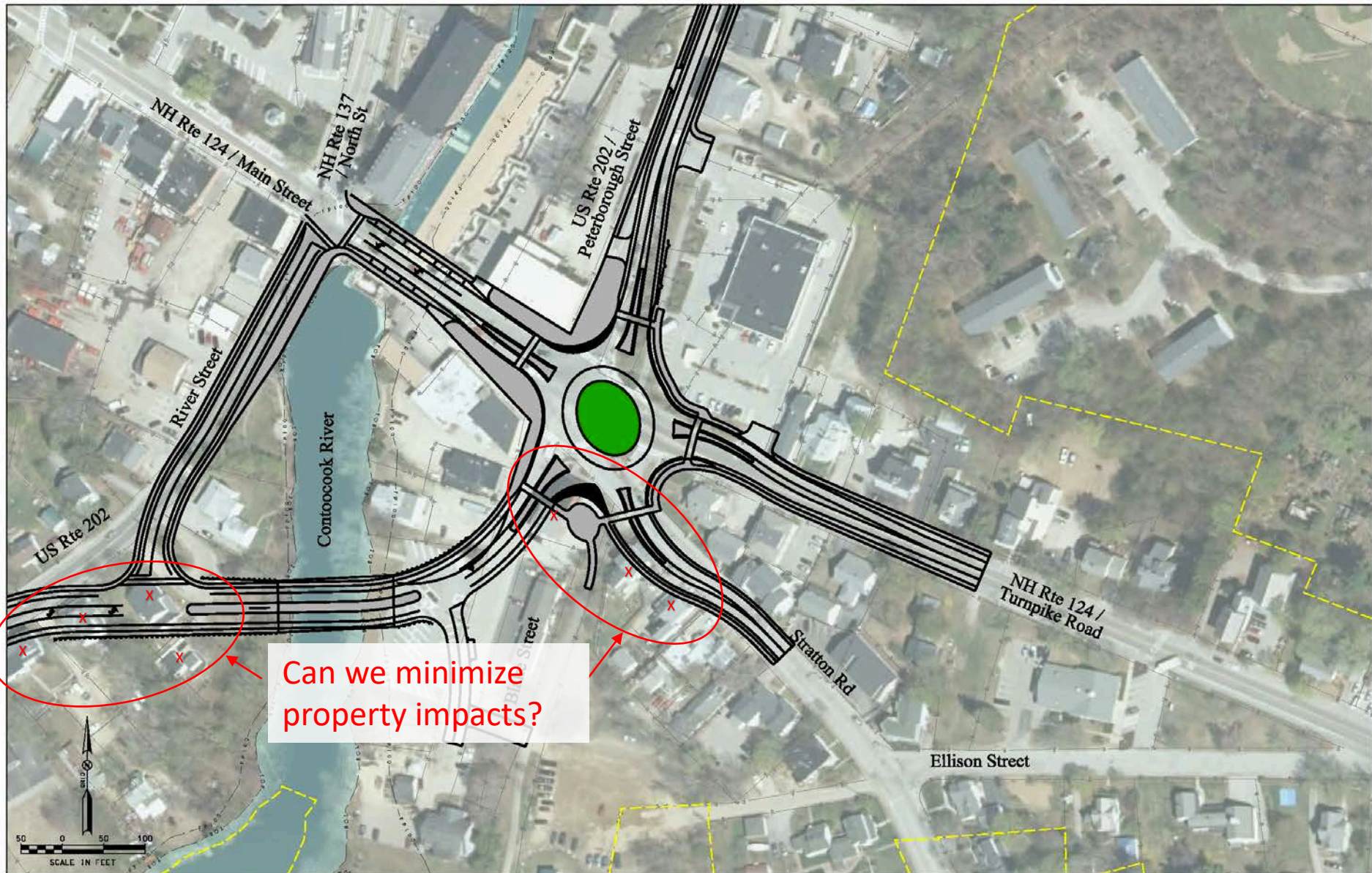
Project Purpose: The purpose of the project is to address the traffic congestion and safety related deficiencies associated with the current configuration of the US 202 dogleg intersections of Main Street with Peterborough Street and Main Street with River Street while enhancing pedestrian mobility and supporting the quality of life and the economic vitality of Jaffrey's downtown.

Jaffrey 16307

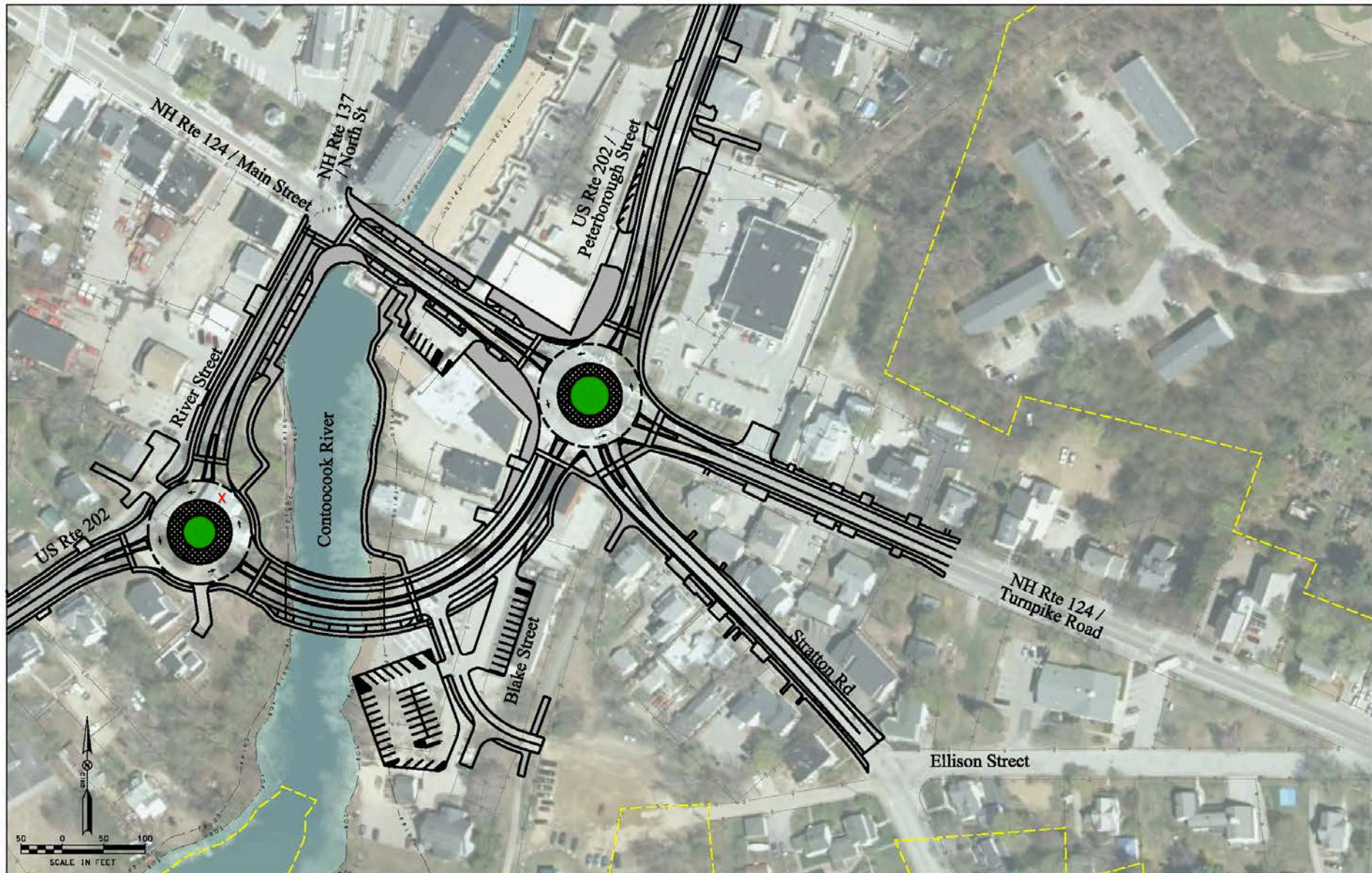
Alternatives Screening Matrix

		No Build	Alignment Alternatives			Intersection Alternatives			
			Alt 1	Alt 2	Alt 3	Five-Leg Signal	Four-Leg Signal	Five-Leg Roundabout	Four-Leg Roundabout
Meets Project Purpose?		No	Yes	Yes	Yes	Yes	Yes	Yes	Yes
Construction Cost (2018 Dollars)			\$4.8 M	\$9.4 M	\$14.8 M	\$2.4 M	\$2.4 M	\$ 2.1 M	\$1.9 M
Impacts	Metric								
Wetlands	Wetland Impact (acres)	0	0.0	0.9	1.2	0	0	0	0
	Contoocook River Bank Impacts (lin ft)	0	15	292	38	0	0	0	0
	Other Stream Impacts (lin ft)	0	0	393	392	0	0	0	0
Water Quality	New Impervious Surface (acres)	0	0.5	2.0	2.0	0.2	0.3	0.2	0.2
Floodplain	100-year Floodplain Fill (acres)	0	0.0	0.9	1.3	0	0	0	0
	Floodway Impacts?	No	No	Yes	Yes	No	No	No	No
Groundwater Resources	New Impervious Surface - Stratified Drift (acres)	0	0.3	0.5	0.7	0.3	0.4	0.3	0.3
	New Impervious Surface - WHPA (acres)	0	0.0	0.1	0.4	0.0	0.1	0.0	0.1
Threatened and Endangered Species/Habitat	Tree Clearing - Potential NLEB Impact (acres)	0	0.1	1.8	2.2	0.0	0.0	0.0	0.0
	# State-Listed Populations Potentially Impacted	0	0	0	0	0	0	0	0
Public Parks & Recreation	LWCF Property Impacts (acres)	0	0	0	1.1 (Community Park)	0	0	0	0
	# of Recreation Sites Impacted	0	0	0	1 (Community Park)	2 (Jaffrey War Memorial Park; Bissell Alderman Park)	2 (Jaffrey War Memorial Park; Bissell Alderman Park)	2 (Jaffrey War Memorial Park; Bissell Alderman Park)	2 (Jaffrey War Memorial Park; Bissell Alderman Park)
Right-of-Way	# of Parcels Impacted (Full or Partial)	0	10	17	7	8	8	12	7
	Structure Impacts	0	4 - Residential 0 - Commercial	8 - Residential 0 - Commercial	6 - Residential 0 - Commercial	0 - Residential 1 - Commercial	0 - Residential 1 - Commercial	2 - Residential 1 - Commercial	0 - Residential 1 - Commercial
Cultural Resources	# of Known Individually-Eligible Historic Properties Directly Affected	0	0	0	0	0	0	0	0
	# of Contributing Elements Directly Affected	0	3	3	2	1	1	2	1
	Archaeologically-Sensitive Area (acres)	0	0.3	3.1	2.0	0.1	0.1	0.1	0.1

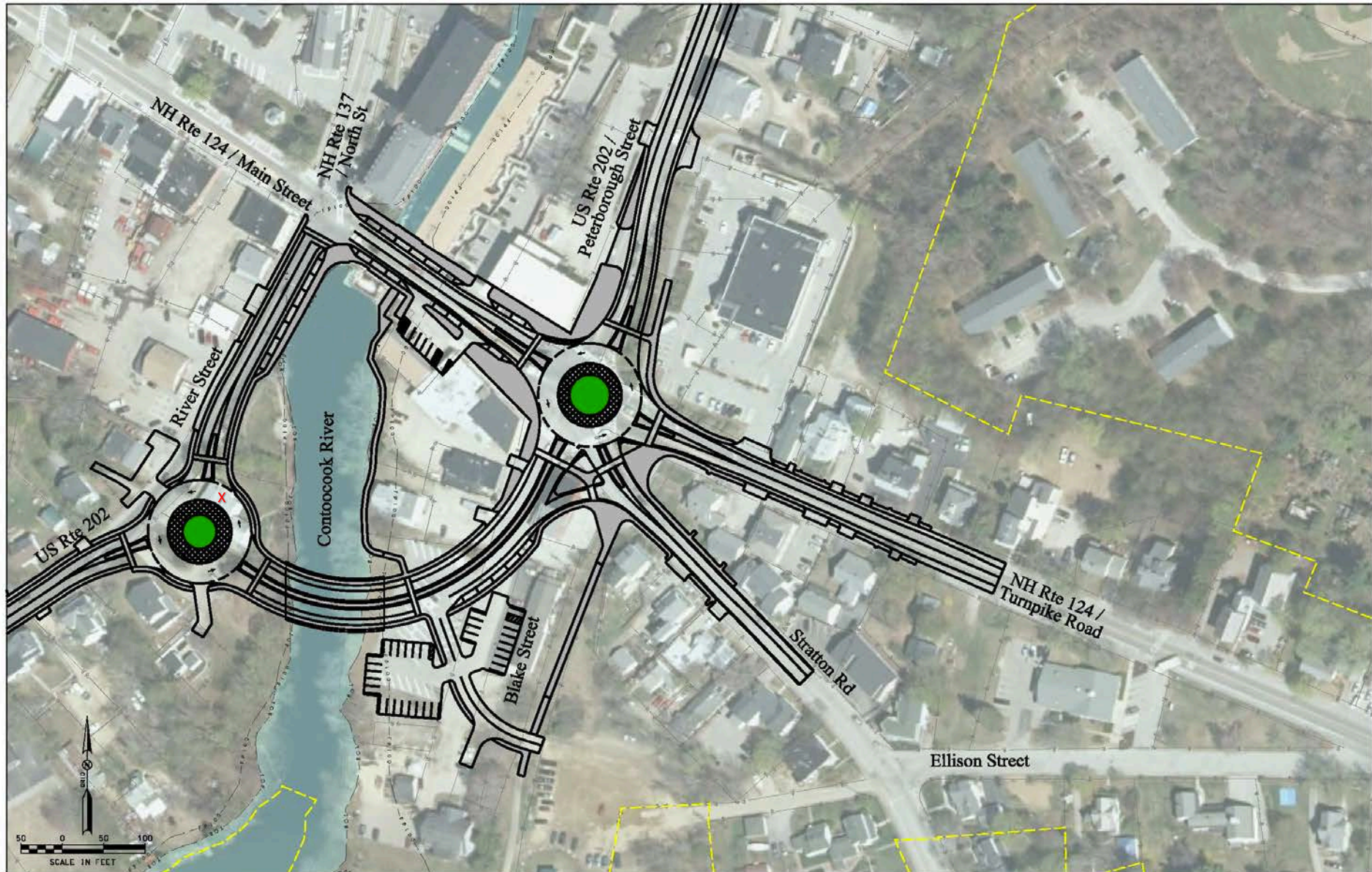
Need to Minimize Property Impacts



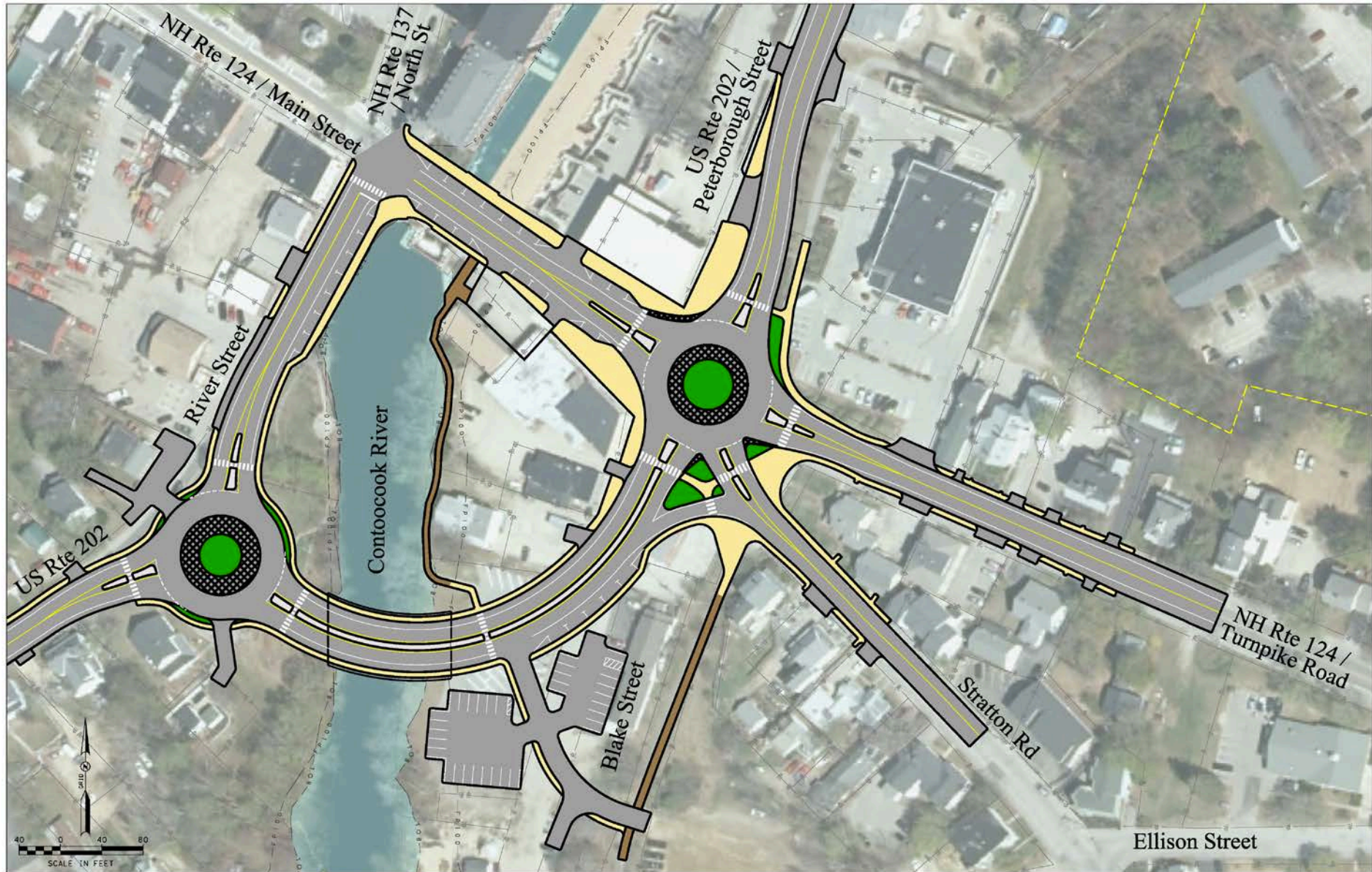
Effort to Minimize Property Impacts



Continuing to Fine Tune



Proposed Action



Roundabout Demonstration



Layout Roundabout Dimensions



Volunteer Drivers



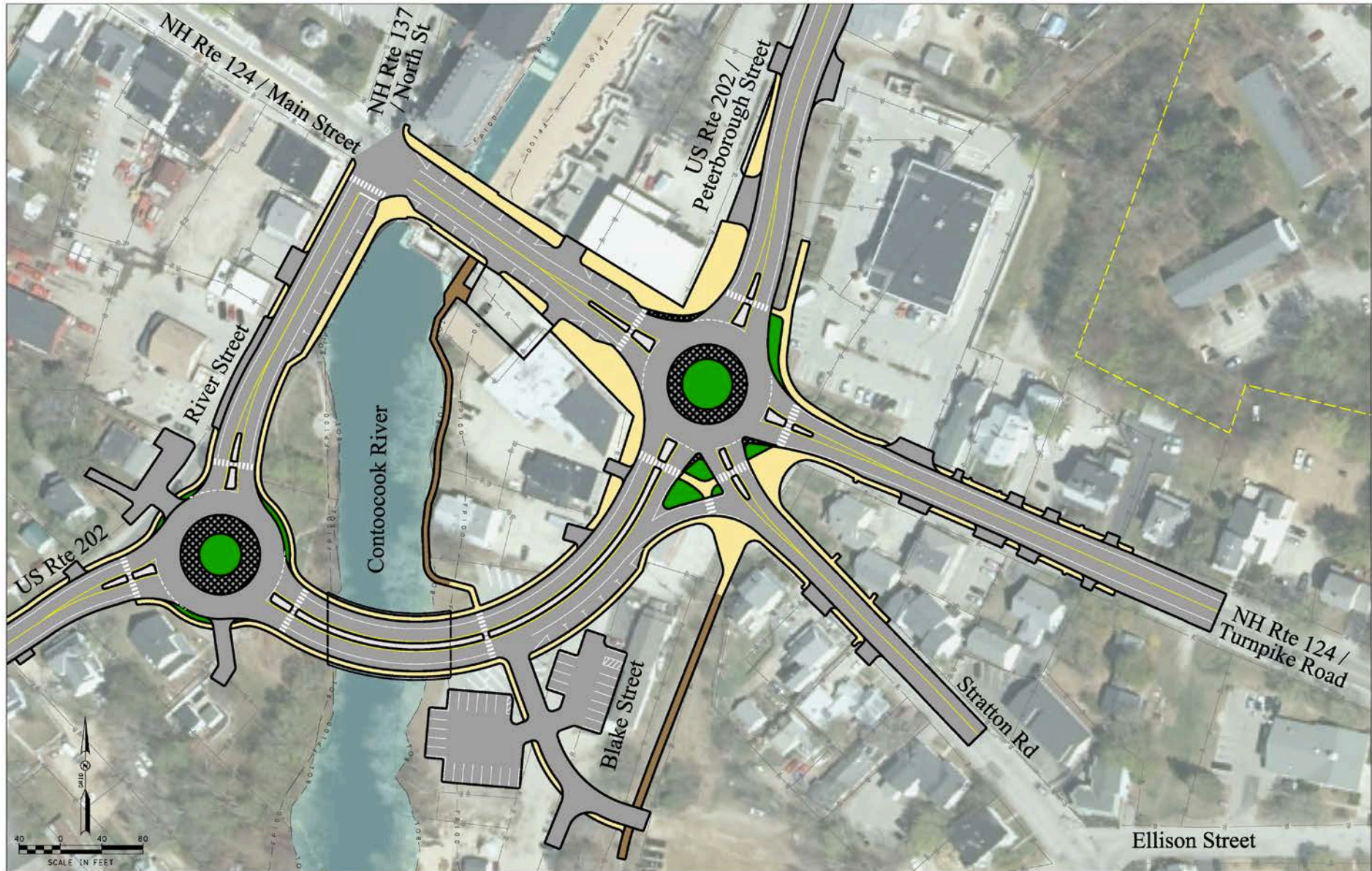
Large Trucks, Fire, School Buses



Drone Video

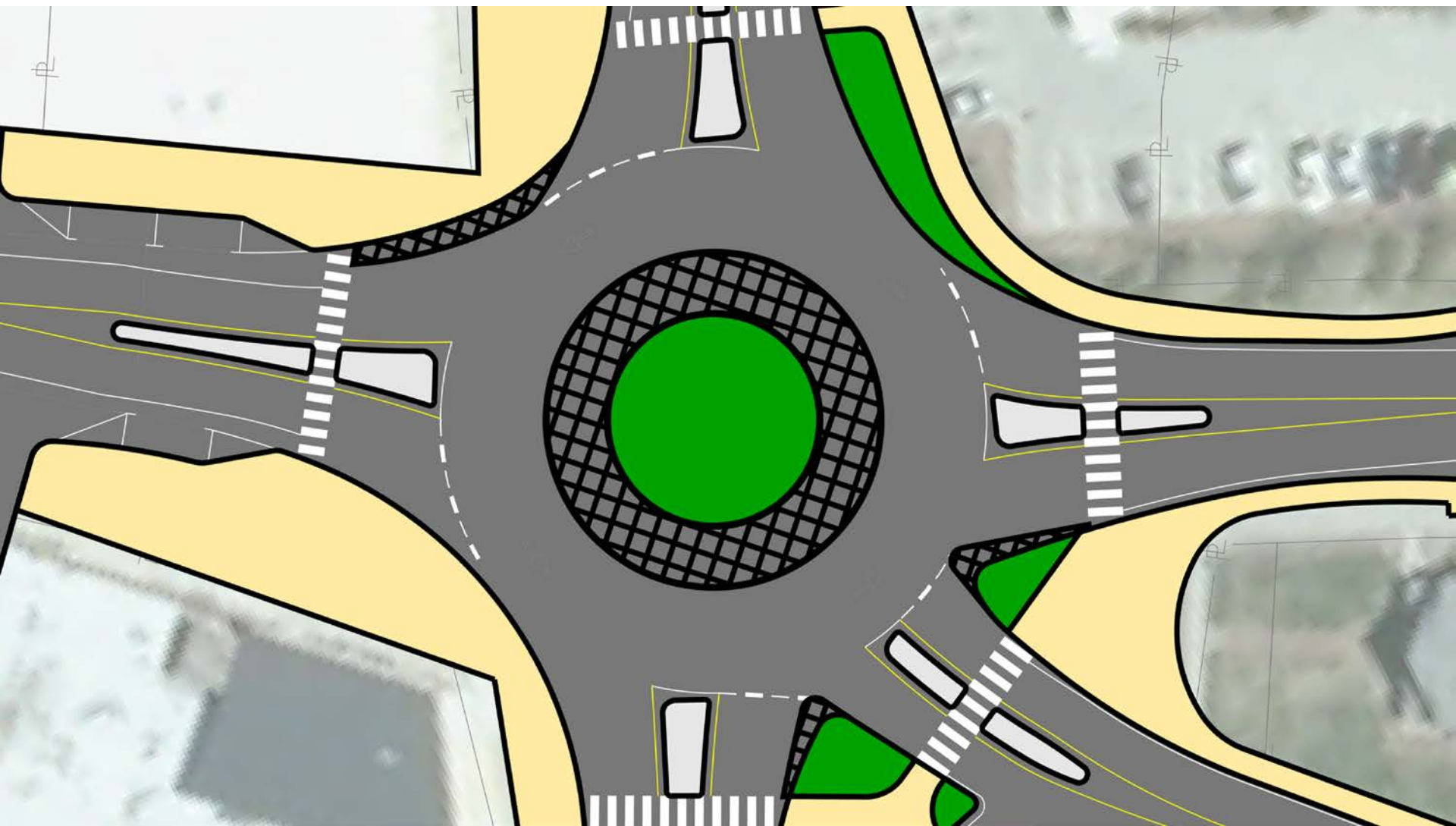


PROPOSED ACTION

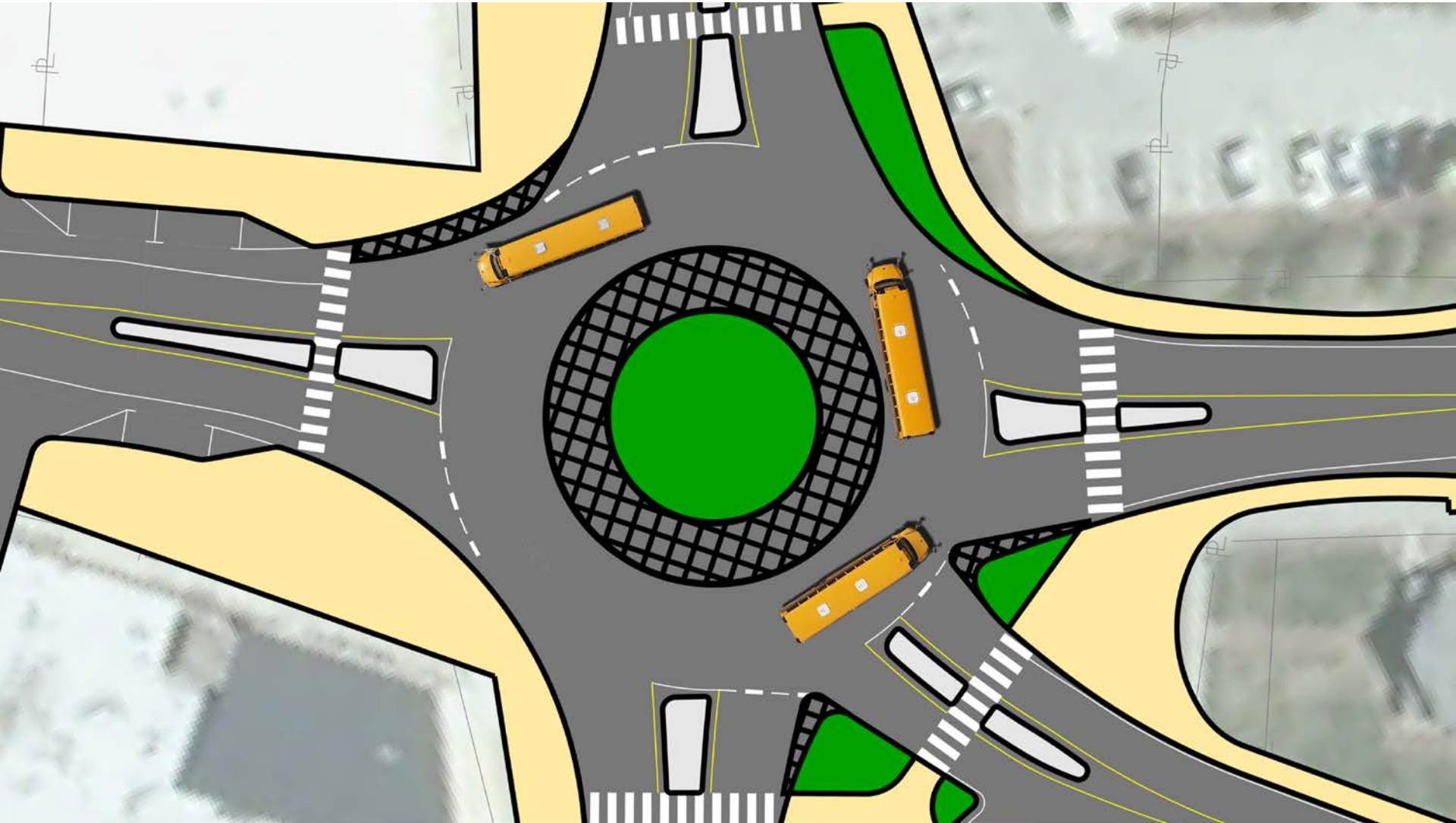


Roundabout Demonstration

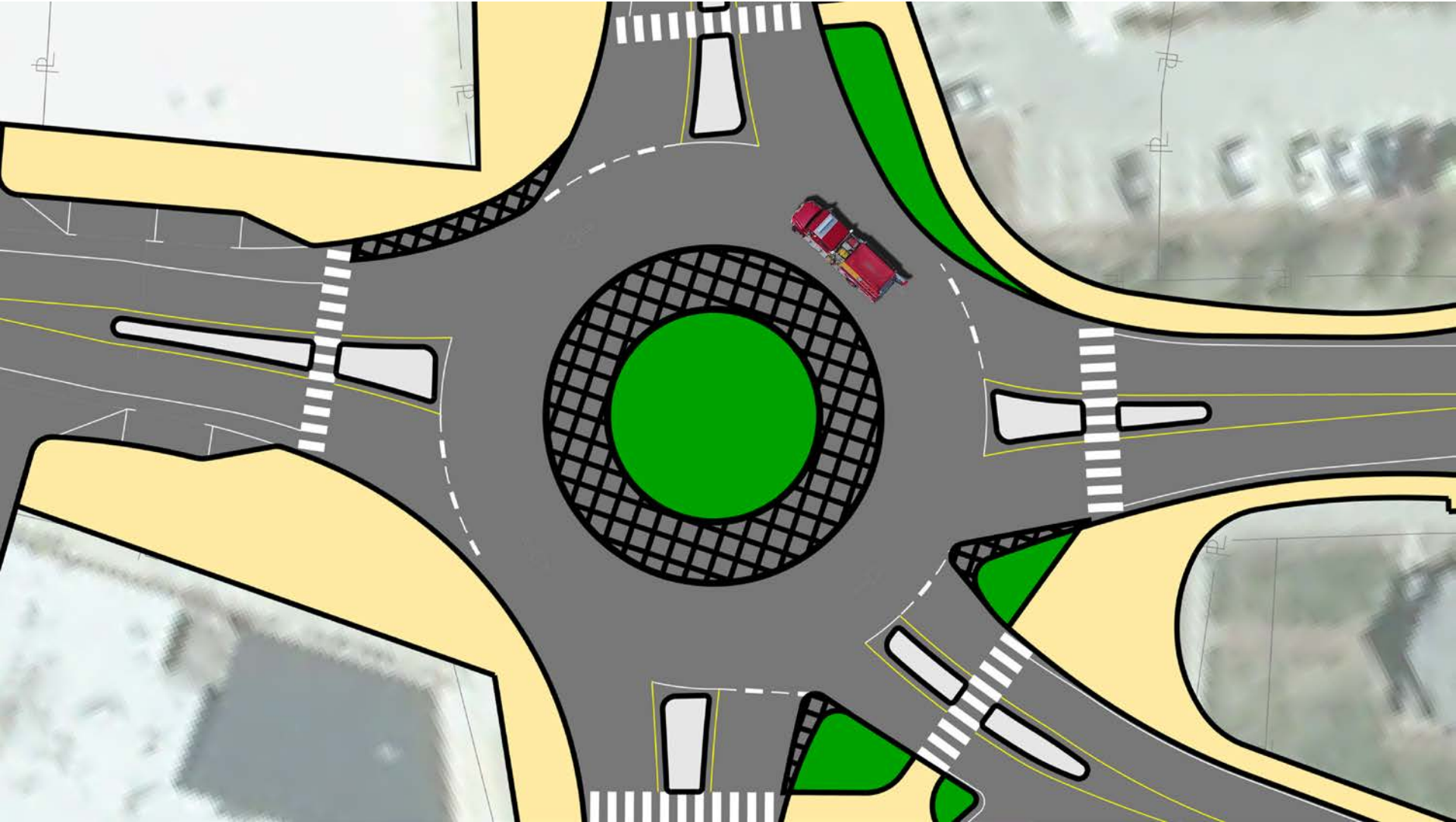




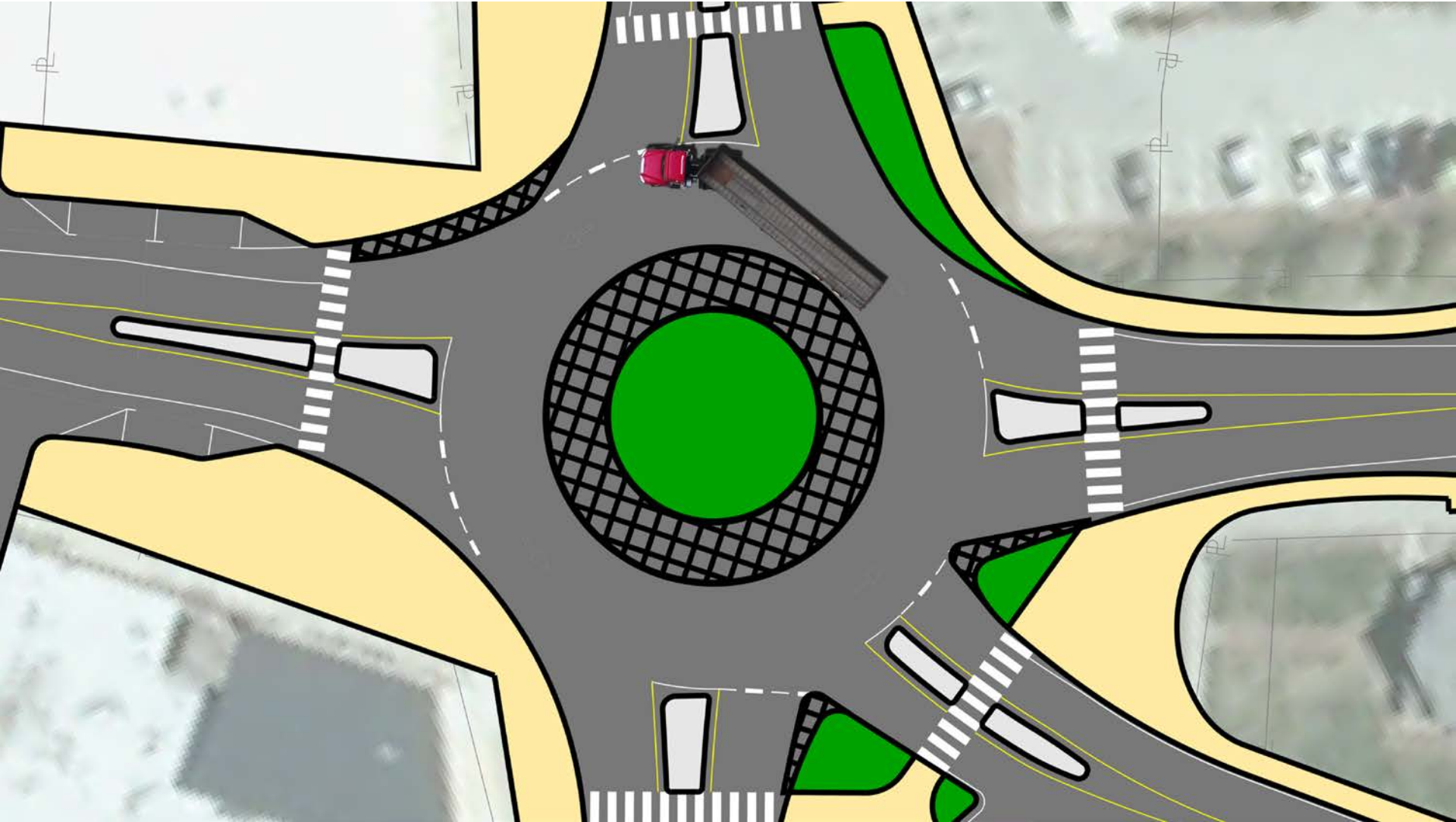
School Bus Movements



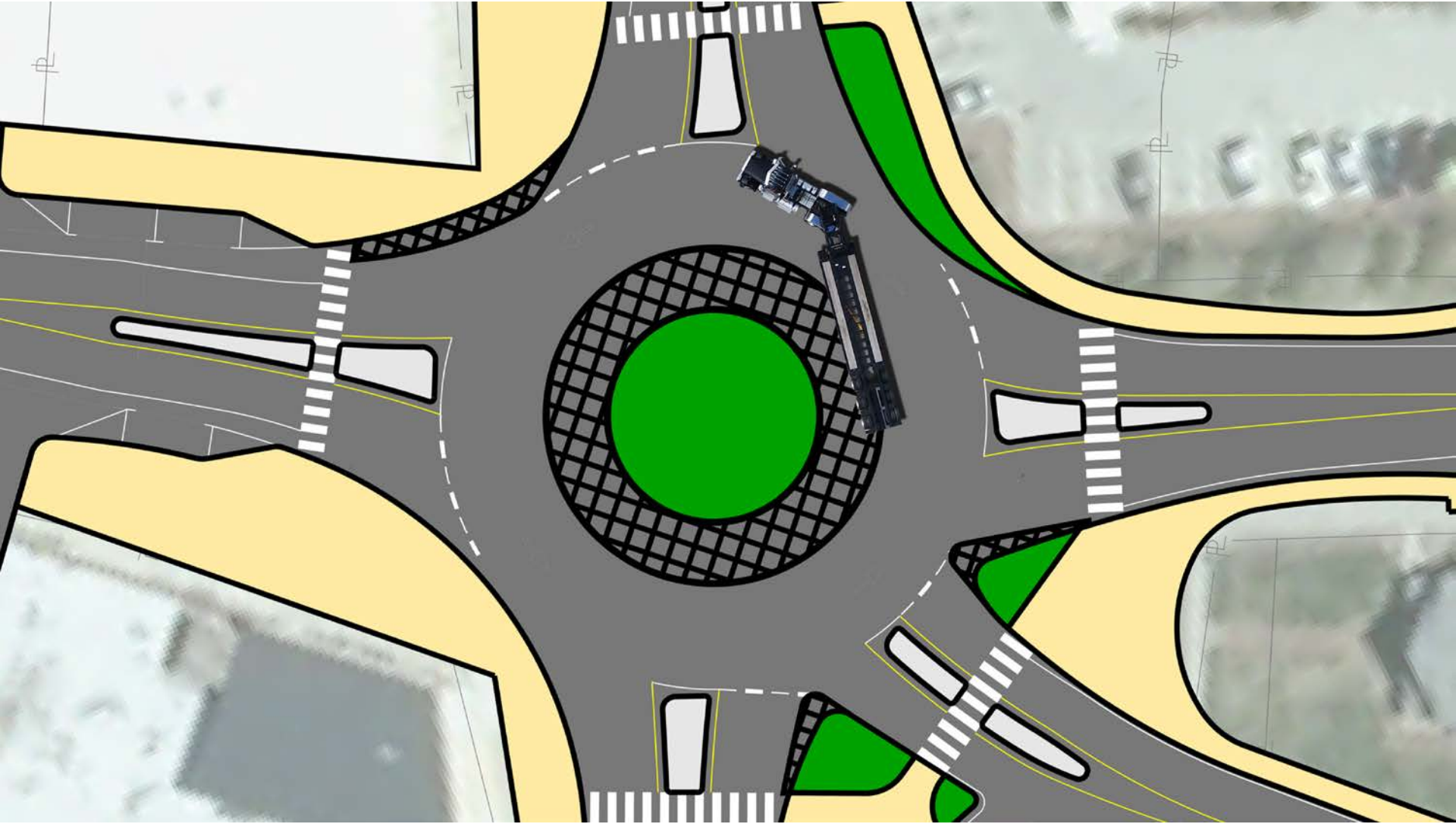
Emergency Vehicle Movements

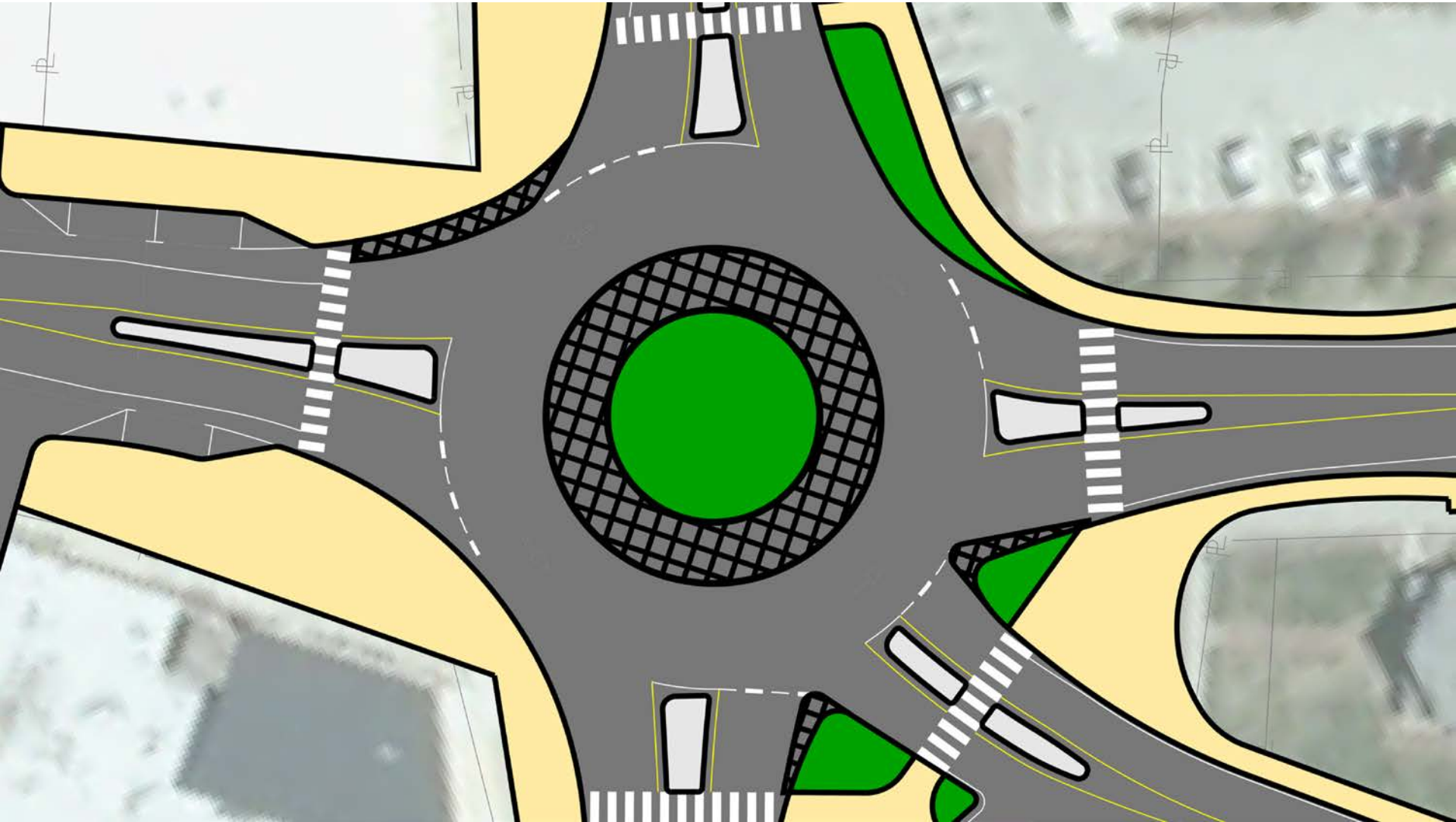


Large Truck Movements

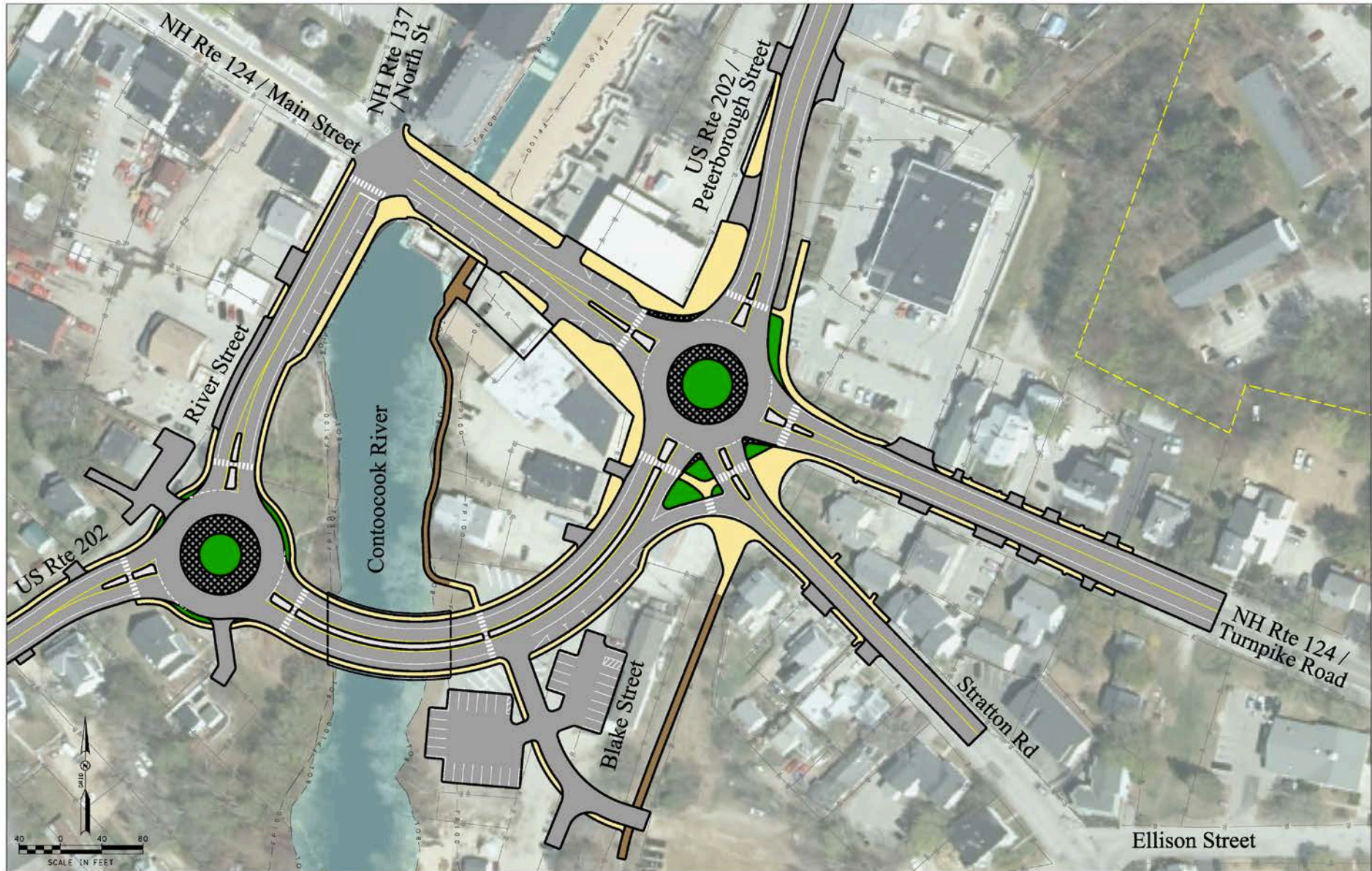


Large Truck Movements





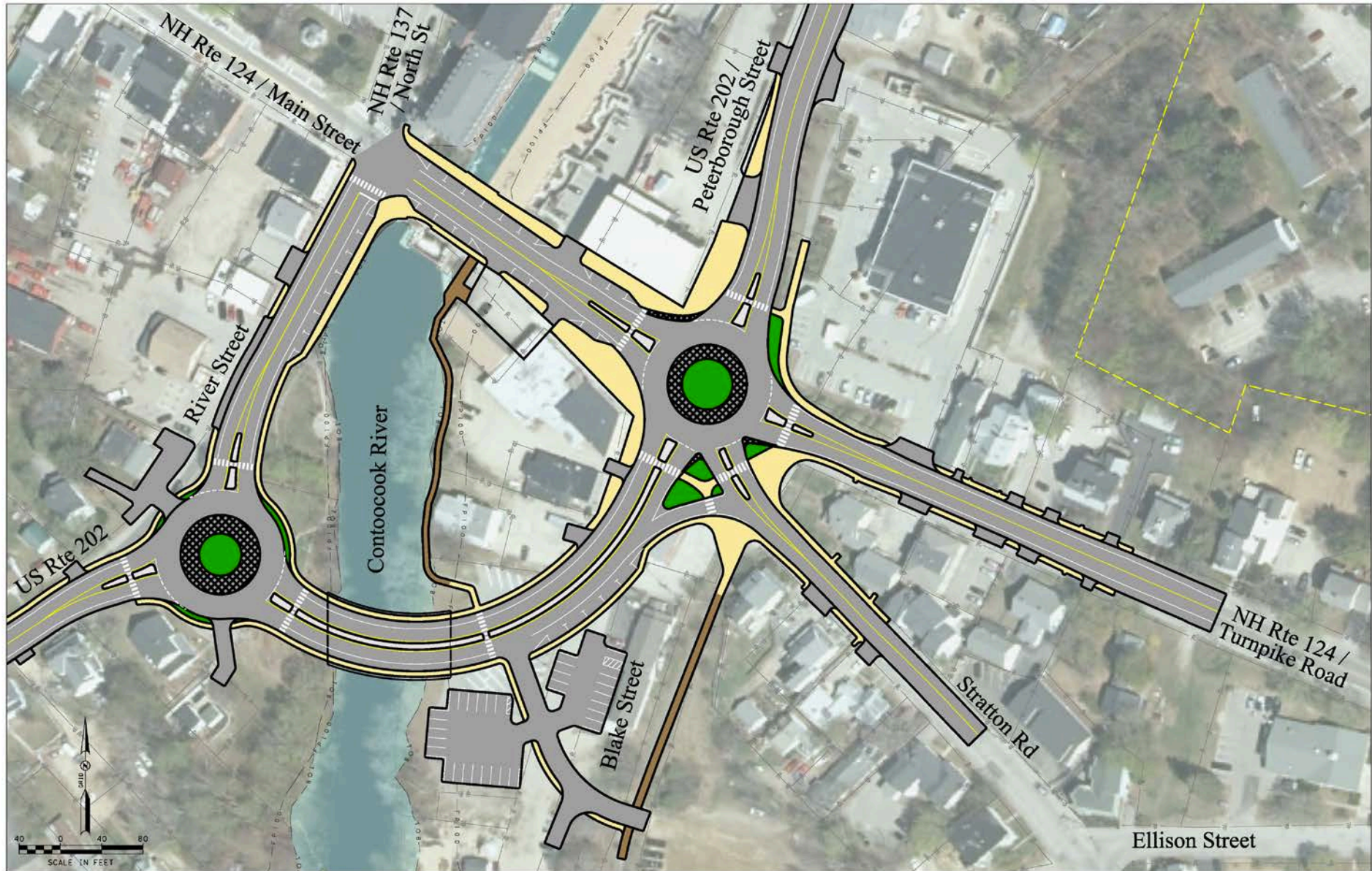
PROPOSED ACTION

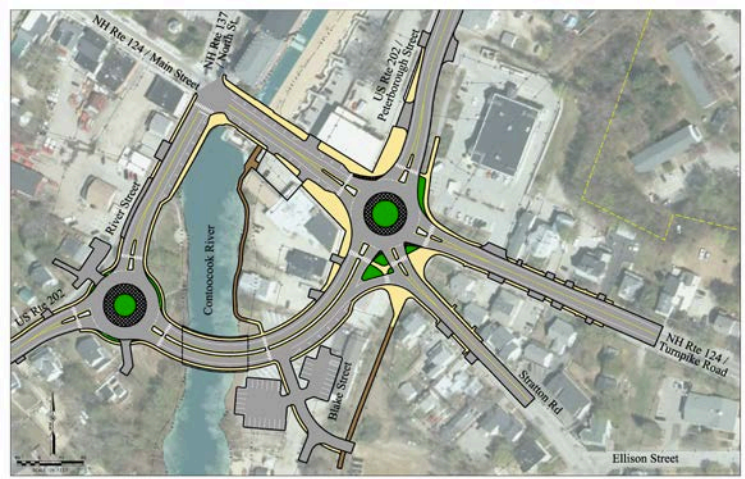


Previous Angle Parking

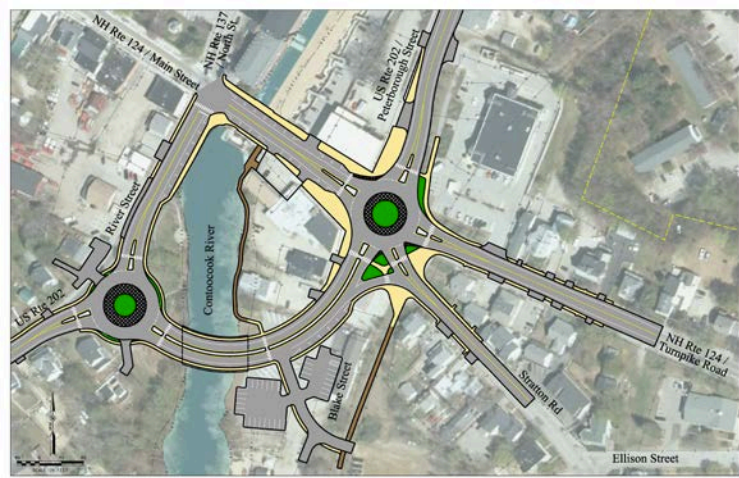


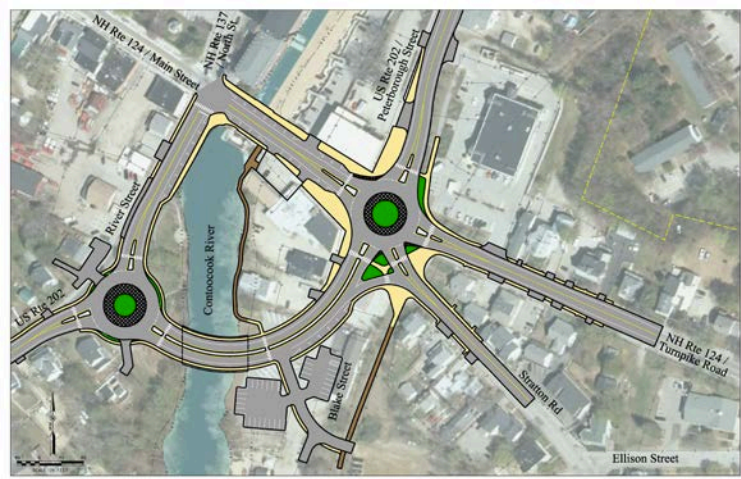
PROPOSED ACTION



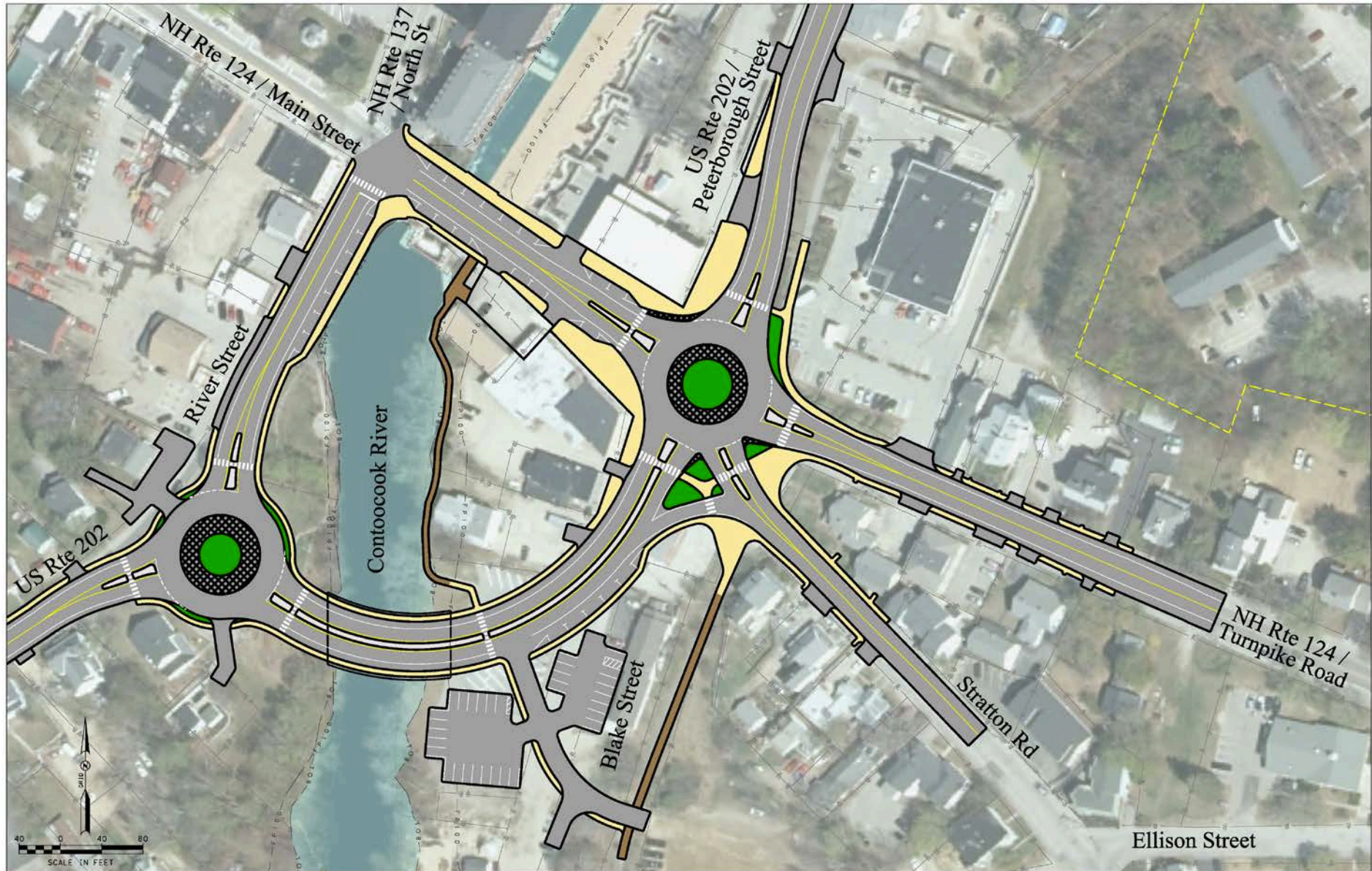








PROPOSED ACTION



NHDOT Project Page

www.nh.gov/dot/projects/jaffrey_16307/index.htm

Feedback Form

Project Information > Project Specific Information

Public Hearing plans, meeting notes and other project-specific documents for Department of Transportation road and bridge projects are available for viewing or download here. *Depending on your Internet connection, larger files may take several minutes to download. Please Be Patient!*

Note: The documents available below are for informational purposes only and should not be considered as final or complete unless otherwise noted.

Project:	Jaffrey 16307	Status: Design
Scope of Work:	US 202 / NH 124 / NH 137 intersection improvements	
Contact:	Victoria Chase, P.E. Victoria.Chase@dot.nh.gov Telephone: (603) 271-2171	
Feedback:	To submit questions or comments regarding this project please contact: Consultant Project Manager Marty Kennedy, P.E. VHB mkenneadv@vhb.com	
Available Files:	Public Involvement Plan - February 2018 Advisory Committee Team Location Map	
Newsletters:	Fall 2017 Spring 2018	
Public Information Meeting November 15, 2018	Meeting Invitation Public Notice	
Advisory Committee Meeting #8 October 16, 2018	Presentation Meeting Notes	
Advisory Committee Meeting #7 July 10, 2018	Presentation Meeting Notes	
Advisory Committee Meeting #6 May 29, 2018	Presentation Meeting Notes	

Jaffrey US 202 Dogleg Intersection Transportation Improvements Study

Public Informational Meeting #3
November 15, 2018

Use this form to provide written comments or suggestions regarding the Jaffrey US 202 Dogleg Intersection Transportation Improvements Study. You may also make verbal comments during the question and answer portion of the meeting. Please include your full name and address. This form can be returned to the study team this evening or can be mailed to:

Marty Kennedy, Project Manager
VHB
2 Bedford Farms Drive, Suite 200
Bedford, New Hampshire 03110
(603) 391-3900
E-mail: mkenneadv@vhb.com

Please visit the project website at
www.nh.gov/dot/projects/jaffrey_16307/index.htm

Please print clearly.

Name: _____ Date: _____

Address (Street, City, State): _____

E-mail: _____

Comment: _____

Additional Page(s) Included Yes No



What Do You Think?





Jaffrey US 202 (Part A)

Public Informational Meeting # 3
November 15, 2018

