



Jaffrey US 202 (Part A)

Advisory Committee Meeting #3
September 12, 2017



TODAY'S AGENDA

- Purpose and Need Statement
- Environmental & Cultural Resource Mapping
- Future Year Traffic Volumes
- Defining Alternatives
- Schedule 1st Public Informational Meeting (Newsletter)
- Your Thoughts, Comments, Questions



PURPOSE AND NEED STATEMENT

PURPOSE AND NEED STATEMENT

- The **Purpose** defines the transportation problem to be solved
- The **Need** provides data to support the problem statement (Purpose)

What are we trying to accomplish and **why** do we believe it is necessary?

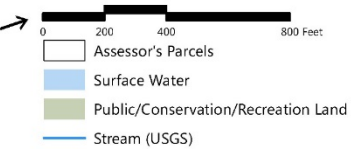
THE PURPOSE

- The **Purpose** should be described as a positive **outcome** (for example, reduce congestion, enhance mobility, enhance pedestrian safety)
- The **Purpose** should not describe a solution
- The **Purpose** should be stated in broad terms, so as to not prematurely dismiss alternatives

PROJECT PURPOSE

*The purpose of the project is to address the **traffic congestion and safety** related deficiencies associated with the current configuration of the US 202 dogleg intersections of Main Street with Peterborough Street and Main Street with River Street while enhancing **pedestrian mobility** and supporting the **quality of life** and the **economic vitality** of Jaffrey's downtown.*

ENVIRONMENTAL & CULTURAL RESOURCES



Jaffrey 16307

Jaffrey, New Hampshire

Wetland Resources

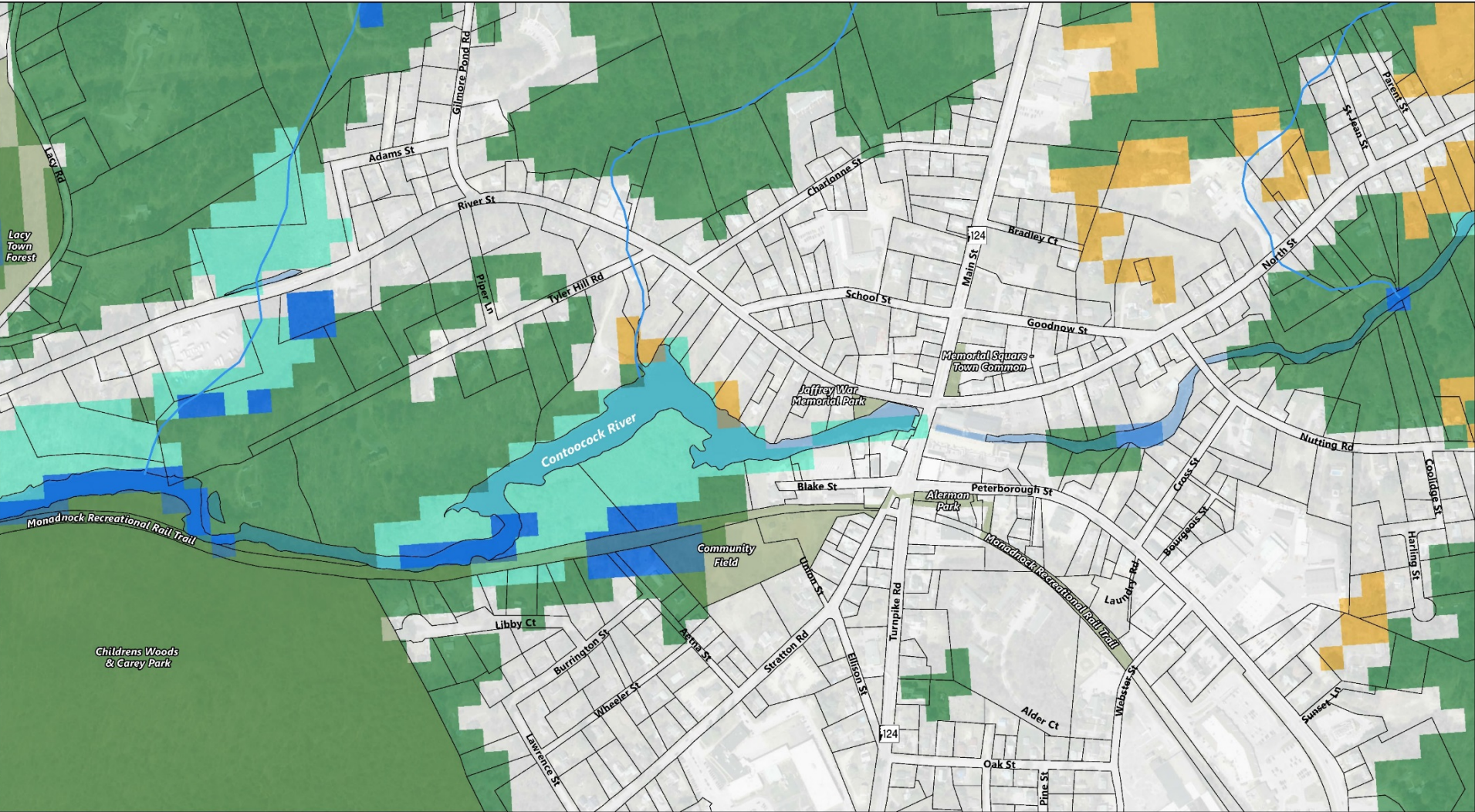


- Assessor's Parcels
- 1% Annual Chance Flood Hazard (Zone AE)
- Surface Water
- FIRM Panel
- Public/Conservation/Recreation Land
- Base Flood Elevation
- Stream (USGS)

Jaffrey 16307

Jaffrey, New Hampshire

Floodplains



- | | | |
|-------------------------------------|-------------------------------|-----------------|
| Assessor's Parcels | NHF&G Habitat Type: Grassland | Northern swamp |
| Surface Water | Hemlock-hardwood-pine | Open water |
| Public/Conservation/Recreation Land | NLCD Developed or Barren | Temperate swamp |
| Stream (USGS) | Wet meadow/shrub wetland | |

Jaffrey 16307

Jaffrey, New Hampshire

Wildlife Action Plan Habitats

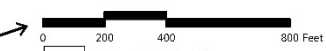


- Assessor's Parcels
- Surface Water
- Public/Conservation/Recreation Land
- Stream (USGS)
- Private Well
- Wellhead Protection Areas
- Aquifer (Stratified Drift)

Jaffrey 16307

Jaffrey, New Hampshire

Groundwater Resources



- Assessor's Parcels
- Surface Water
- Public/Conservation/Recreation Land
- Stream (USGS)

- Hazardous Material Source**
- Above Ground Storage Tank
- Brownfields
- CERCLIS

- Leaking Above Ground Storage Tank
- Leaking Storage Tank
- Leaking Under Ground Storage Tank
- RCRA Database

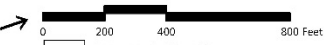
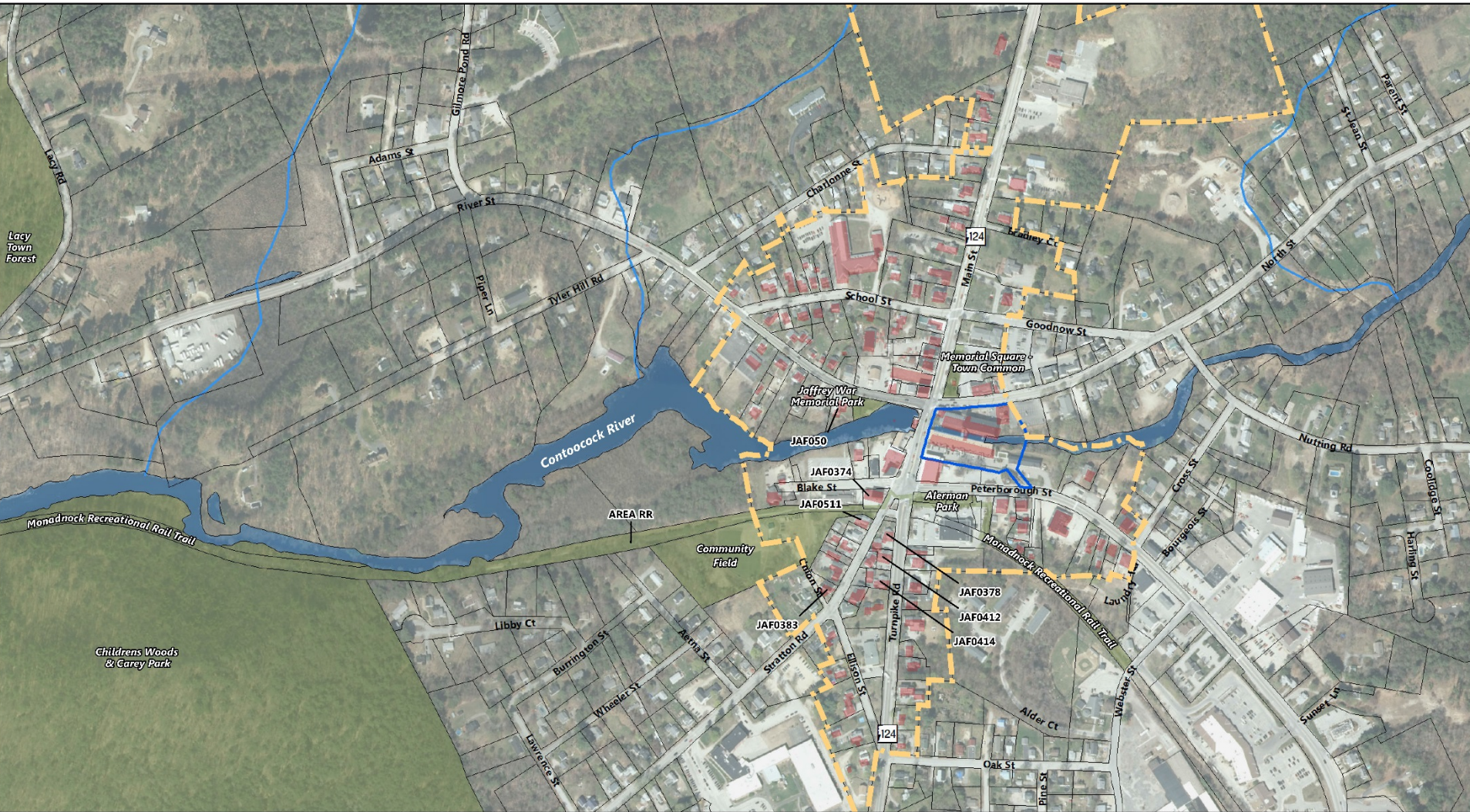
- RCRA Non Gen
- Hazardous Waste Site
- Spill
- Underground Storage Tank

Jaffrey 16307

Jaffrey, New Hampshire

- Groundwater Management Zone
- Associated with Former Laundry

Hazardous Material

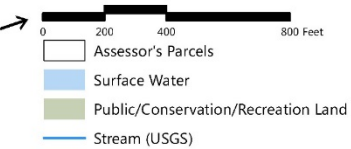


- Assessor's Parcels
- Surface Water
- Public/Conservation/Recreation Land
- Stream (USGS)
- East Jaffrey Historic District
- Contributing Historic Structure
- National Register Listed Property
- JAF#** NHDHR Inventory Property

Jaffrey 16307

Jaffrey, New Hampshire

Cultural Resources



Jaffrey 16307

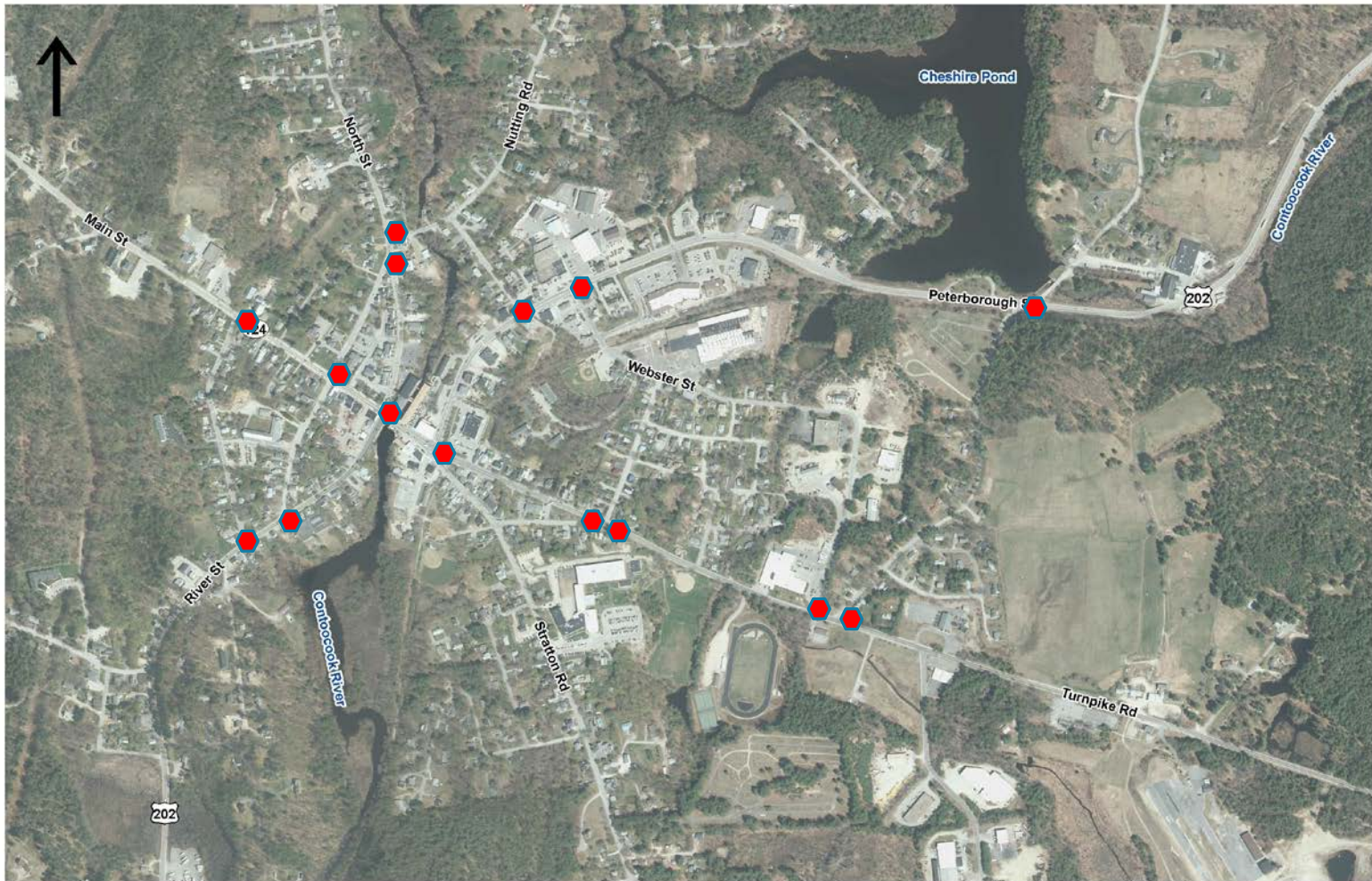
Jaffrey, New Hampshire

**Public, Conservation, and
Recreational Lands**

TRAFFIC VOLUMES & TRAFFIC OPERATIONS

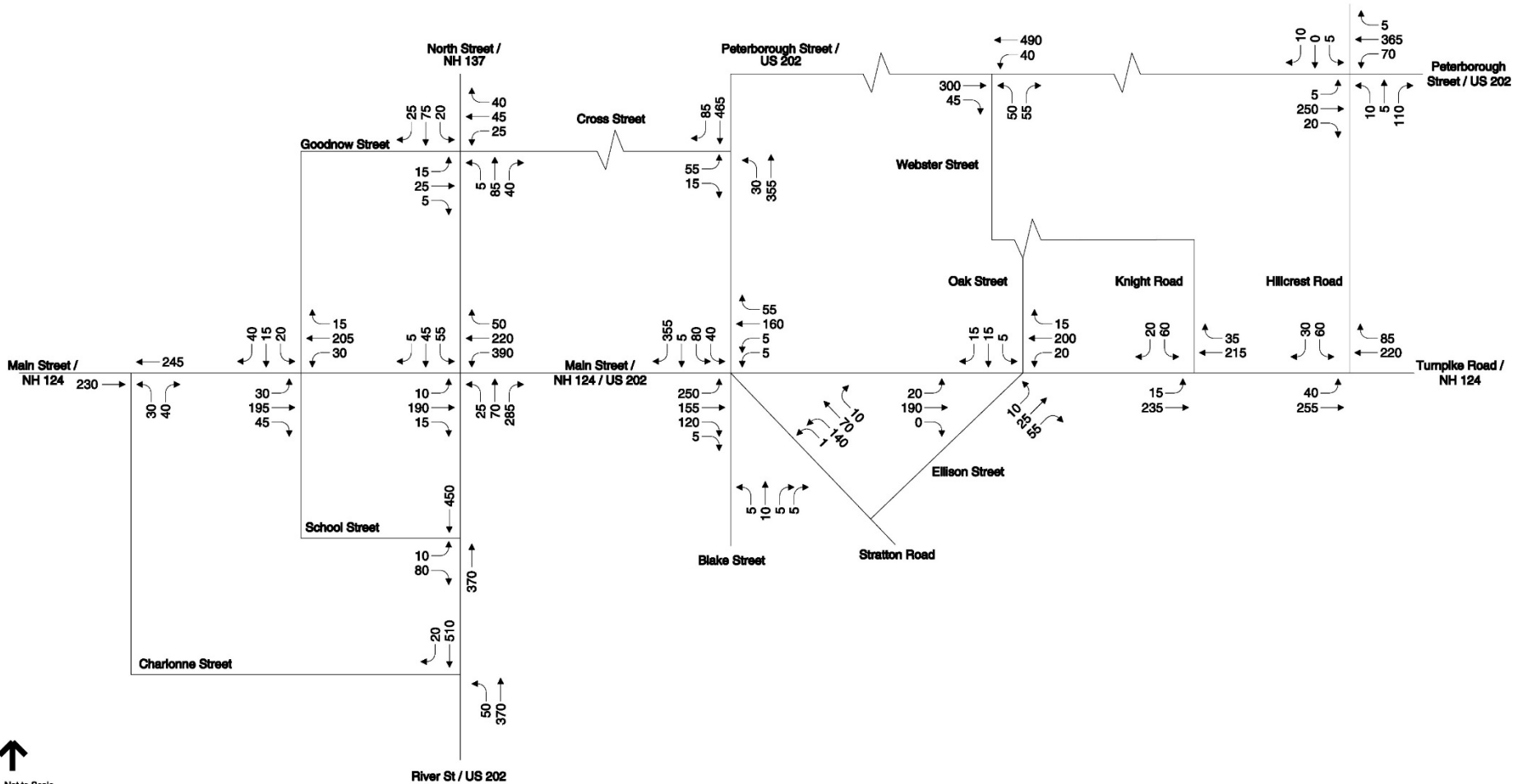
TURNING MOVEMENT COUNT LOCATIONS

WEEKDAY AM AND PM PEAK PERIODS



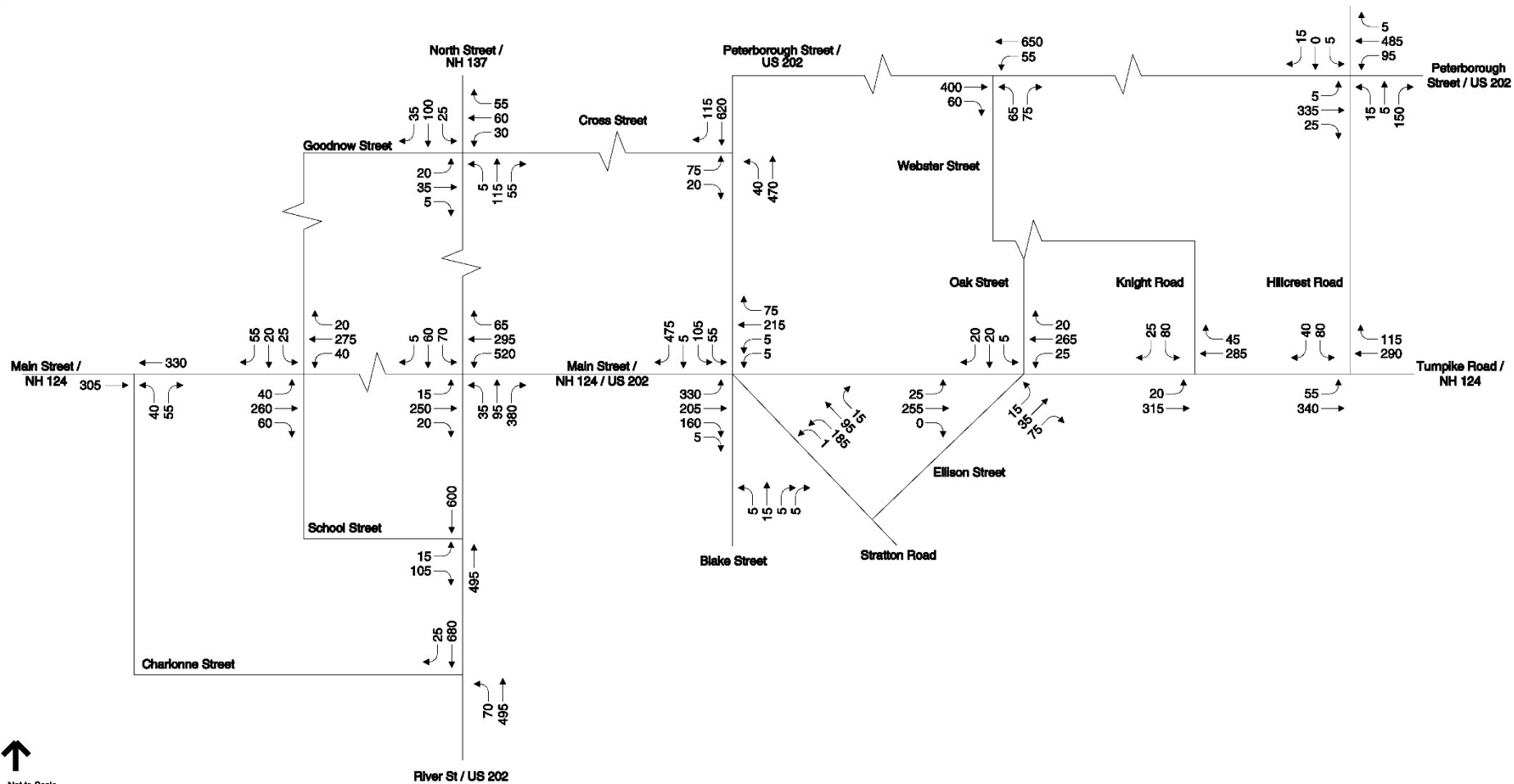
2017 WEEKDAY PM PEAK HOUR

\\vhb\proj\Bedford\52457.00\graphics\FIGURES\Traffic Volume Networks\52455.00.dwg

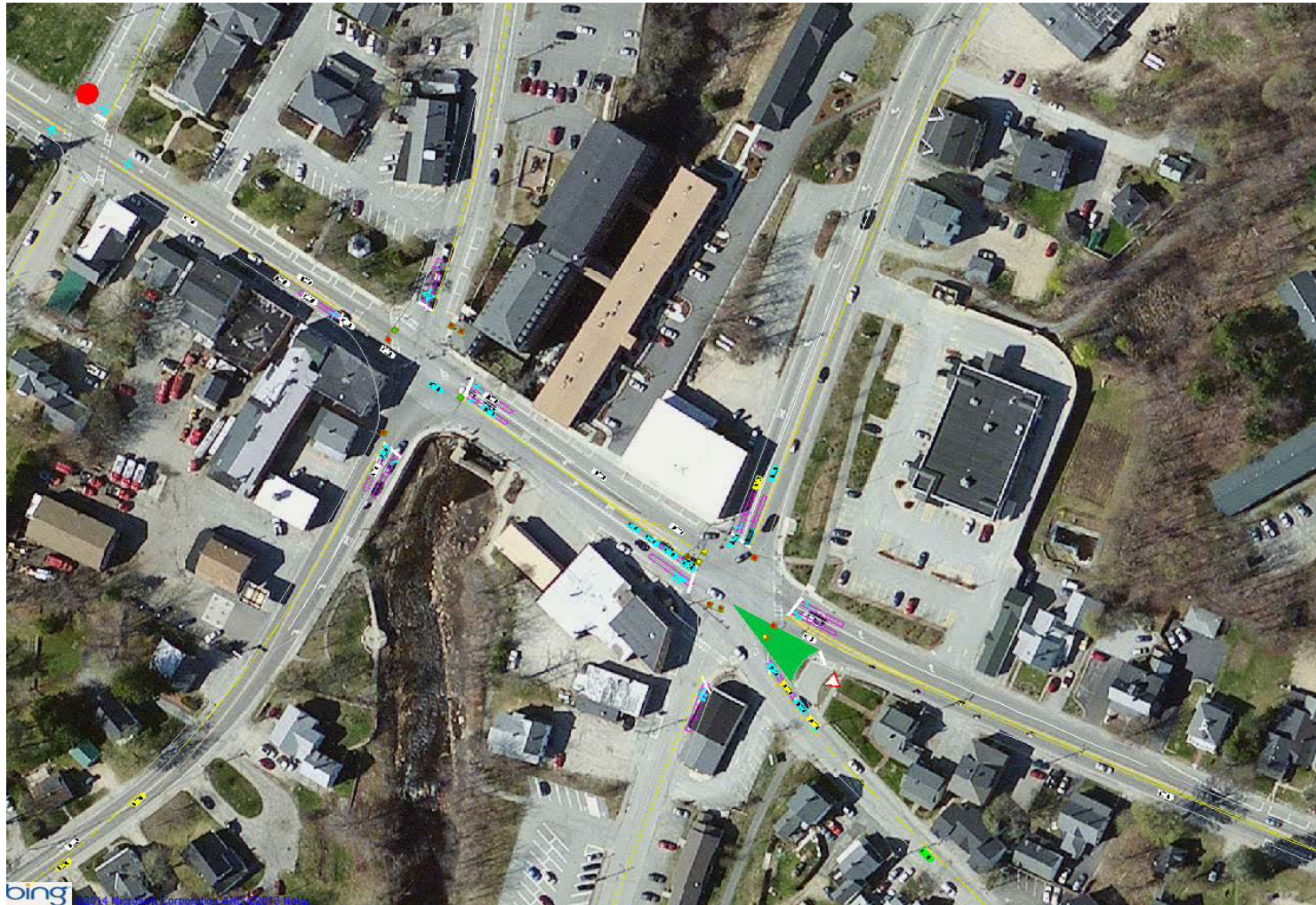


2040 WEEKDAY PM PEAK HOUR

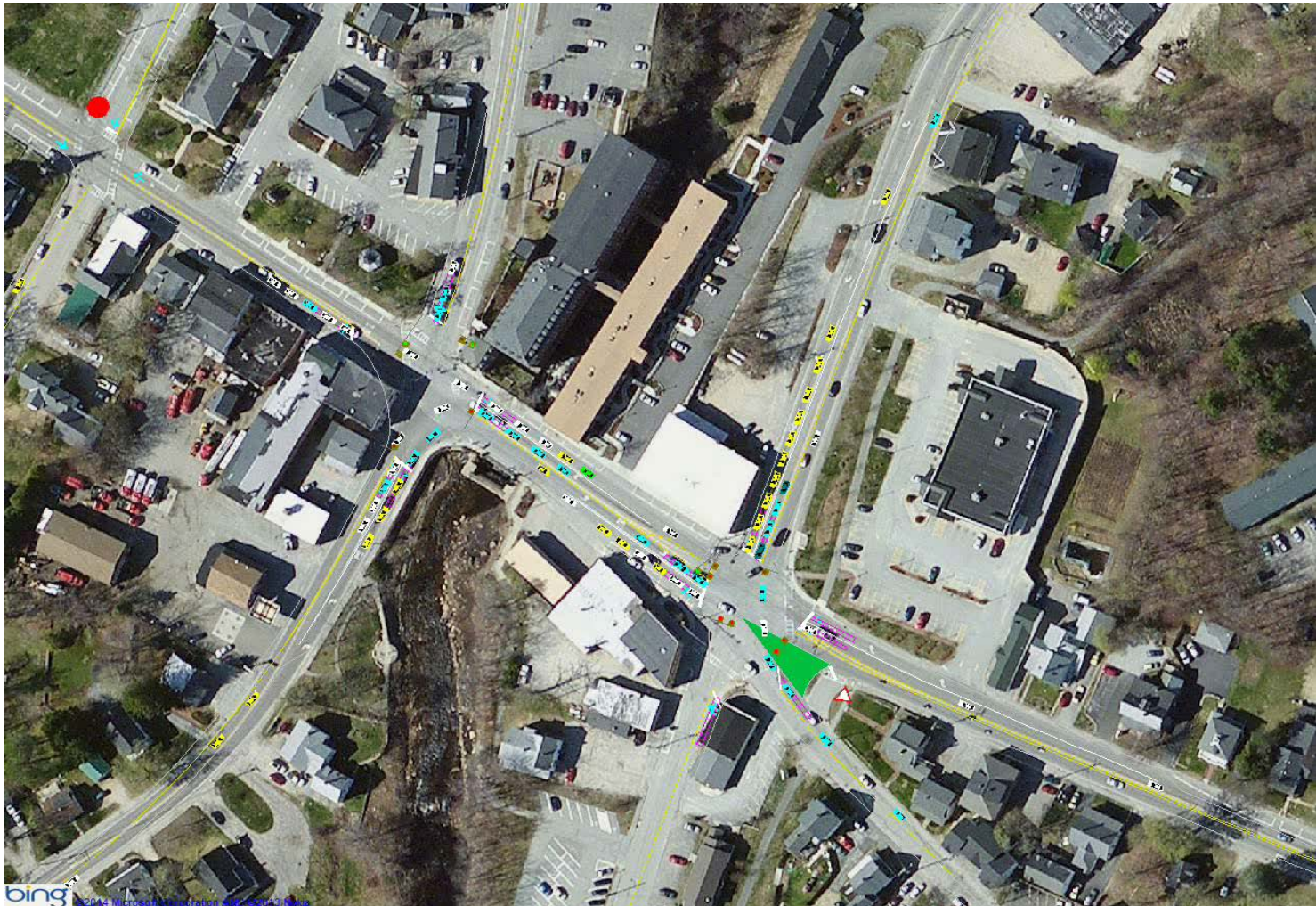
\\vhb\proj\Bedford\52457.00\graphics\FIGURES\Traffic Volume Networks\52455.00.dwg



2017 EXISTING WEEKDAY PM PEAK HOUR



2040 NO BUILD WEEKDAY PM PEAK HOUR

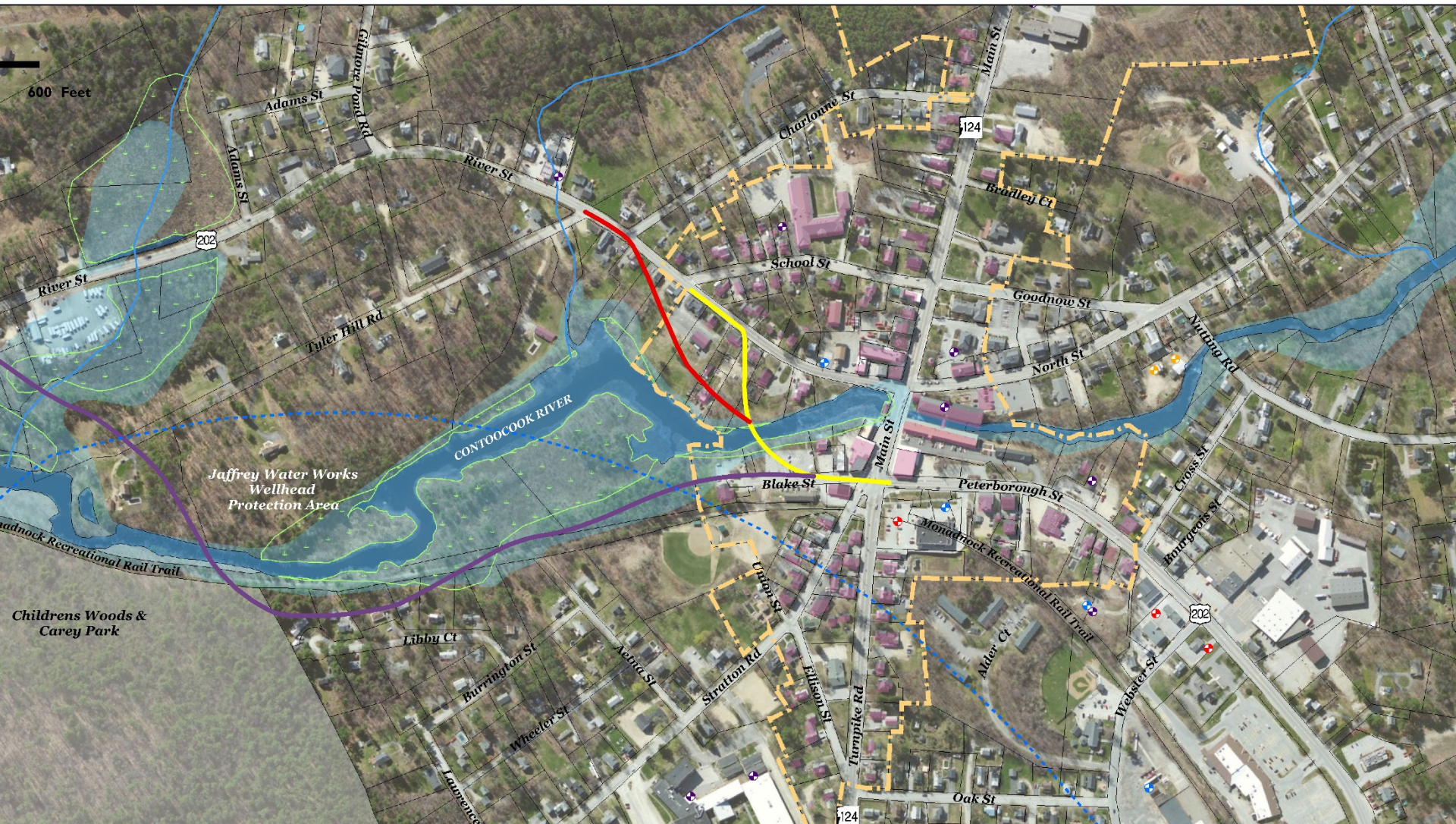


DEFINING THE ALTERNATIVES

ALTERNATIVES

- No Build
- Transportation Demand Management (TDM)
- Transportation Systems Management (TSM)
- Build Alternatives

BUILD ALTERNATIVES



1ST PUBLIC INFORMATIONAL MEETING

QUESTIONS/COMMENTS/SUGGESTIONS?

NHDOT Contact	Consultant Contact
Victoria Chase, PE	Marty Kennedy, PE
Project Manager	Senior Principal
Bureau of Highway Design	VHB
7 Hazen Drive, PO Box 483	2 Bedford Farms Drive
Concord, NH 03301	Bedford, NH 03110
Phone: (603) 271-2171	Phone: (603) 391-3900
Email: victoria.chase@dot.nh.gov	Email: mkenedy@vhb.com



Jaffrey US 202 (Part A)

Advisory Committee Meeting #3
September 12, 2017

