

\* DIMENSION MEASURED HORIZONTALLY AT FACE OF BACKWALL  
 \*\* DIMENSION MEASURED HORIZONTALLY AT END OF DECK  
 ELEVATIONS GIVEN ARE EXISTING AND PROPOSED

**ABUTMENT B EXPANSION JOINT PLAN**  
 SCALE: 3/4" = 1'-0"

**EXPANSION JOINT NOTES**

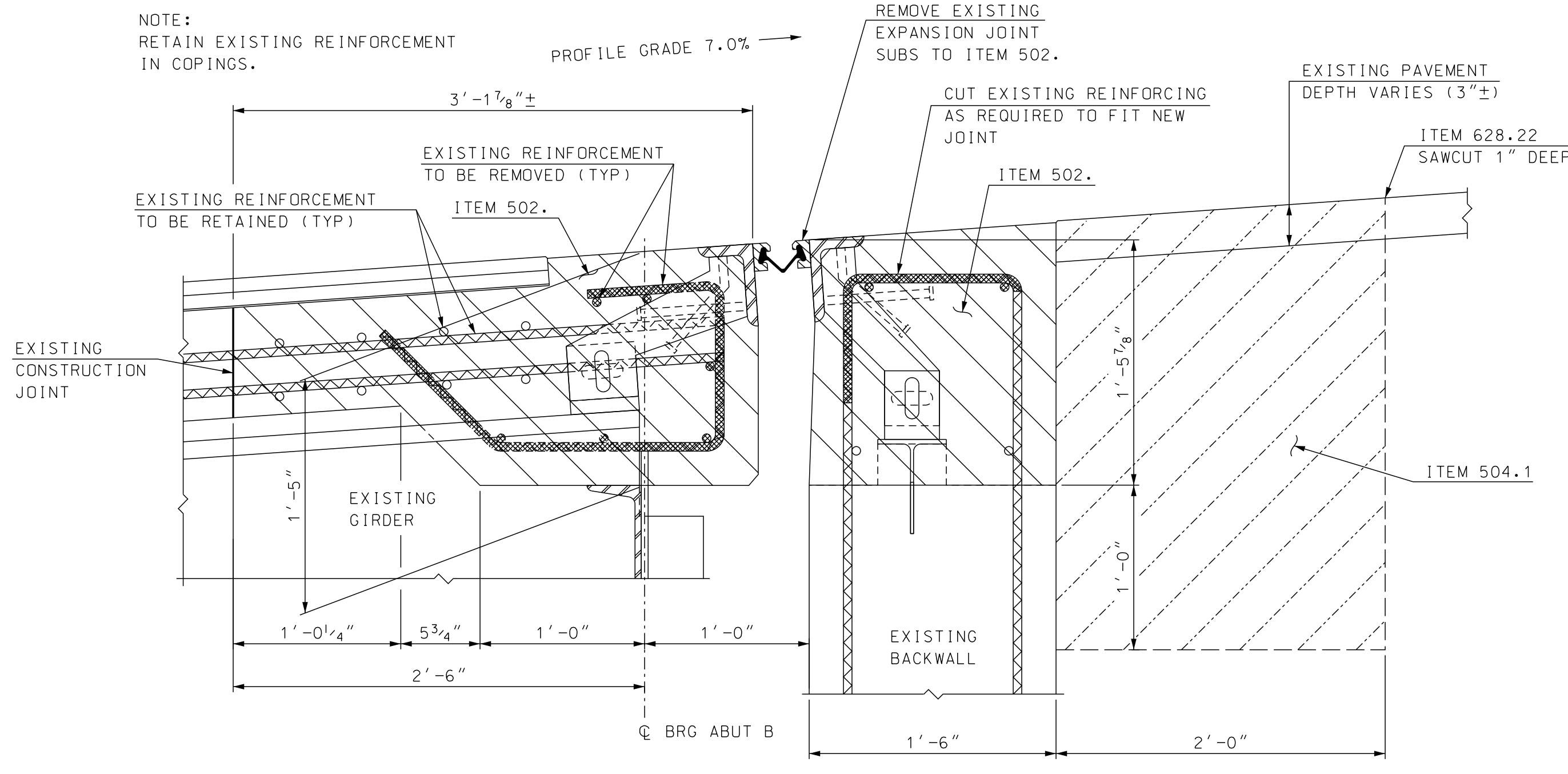
- (1) ALL EXPANSION JOINT STEEL, INCLUDING ANCHORS, SHALL BE GALVANIZED. STEEL ANGLES SHALL BE AASHTO M223 (ASTM A572) GRADE 50. MINOR STEEL PLATES MAY CONFORM TO AASHTO M183 (ASTM A36). THE ENTIRE ASSEMBLY, INCLUDING STRIP SEAL, SHALL BE PAID FOR AS ITEM 561.1202, PREFABRICATED STRIP SEAL EXPANSION JOINT W/PLOW PLATES (F).
- (2) SPLICES FOR STEEL ANGLES SHALL DEVELOP FULL STRENGTH.
- (3) THE EXPANSION JOINT OPENING SHALL BE PRESET TO TEMPERATURE ANTICIPATED AT THE TIME OF INSTALLATION. FINAL SETTING IN THE FIELD SHALL BE DETERMINED BY THE CONTRACT ADMINISTRATOR. SEE TEMPERATURE ADJUSTMENT TABLE & NOTES.
- (4) STRIP SEAL SHALL BE FURNISHED IN ONE CONTINUOUS LENGTH. NO SPLICES WILL BE ALLOWED. SEAL SHALL BE INSTALLED IN THE FIELD BY THE CONTRACTOR, IN ACCORDANCE WITH THE MANUFACTURER OF THE SEAL, USING AN APPROVED TOOL THAT WILL NOT DAMAGE THE SEAL.
- (5) JOINT SUPPORT PLATES AND CURB PLATES SHALL BE SHOP WELDED TO EXPANSION JOINT STEEL AND SHALL BE NORMAL TO GRADE AFTER JOINT ASSEMBLY HAS BEEN ADJUSTED FOR ROADWAY CROSS-SLOPE AND GRADE. STEEL ANGLES AND EXTRUSIONS SHALL BE ASSEMBLED WITH A CONSTANT JOINT OPENING TO ENSURE PROPER PERFORMANCE AND WATER TIGHTNESS.
- (6) IMMEDIATELY AFTER THE JOINT HAS BEEN SECURED TO THE STRUCTURAL STEEL AND BACKWALL, REMOVE SHIPPING DEVICES AND GRIND SMOOTH ANY WELDS ON EXPOSED SURFACES. REPAIR ANY DAMAGE TO GALVANIZED SURFACES IN ACCORDANCE WITH SECTION 550.
- (7) PROTECT TOP OF EXPANSION JOINT DURING PLACEMENT OF CONCRETE AND BITUMINOUS PAVEMENT.
- (8) THE STRIP SEAL HAS BEEN DESIGNED FOR A TOTAL FACTORED MOVEMENT OF 1.10 INCHES. DESIGN INCLUDES MOVEMENT DUE TO TEMPERATURE, SKEW, SHRINKAGE AND MINIMUM INSTALLATION WIDTH. THE CONTRACTOR SHALL USE AN SE-400 SEAL BY WATSON BOWMAN OR A2R-400 BY D.S. BROWN.
- (9) ELEVATIONS SHOWN AT TOP OF ANGLES ARE 1/8" LOWER THAN PROPOSED FINISHED ROADWAY GRADE.
- (10) NO "LOW PROFILE" STEEL EXTRUSIONS ARE ALLOWED.
- (11) STEEL ANGLES AND EXTRUSIONS SHALL BE MAINTAINED FREE OF DIRT, WATER AND ANY OTHER LOOSE DEBRIS, AND CLEANED WITH THE USE OF COMPRESSED AIR, TO ENSURE PROPER FIT OF THE SEAL. CARE SHALL BE TAKEN NOT TO DAMAGE GALVANIZED SURFACES.
- (12) IF JOINT ASSEMBLY IS IN PLACE OVER A WINTER WITHOUT A SEAL, THE JOINT OPENING AND ABUTMENT SHALL BE WASHED PRIOR TO INSTALLATION OF THE SEAL. ALTERNATELY, A TEMPORARY SEAL CAN BE PLACED AND REMOVED FOR INSTALLATION OF THE FINAL SEAL. ALL COSTS SHALL BE SUBSIDIARY TO THE EXPANSION JOINT.
- (13) FOR SECTIONS A-A THROUGH D-D SEE BRIDGE SHEET 17.

**NOTE: DETAILS AND NOTES MAY NOT BE CURRENT. CLOSELY REVIEW BEFORE USING DETAILS.**

**SAMPLE PLAN**  
 DATE: 08-2017

STATE OF NEW HAMPSHIRE									
DEPARTMENT OF TRANSPORTATION * BUREAU OF BRIDGE DESIGN									
TOWN	LEBANON	BRIDGE NO.	087/105	STATE PROJECT	XX				
LOCATION						POVERTY LANE over I-89 NB & SB			
<b>STRIP SEAL EXP JT ABUT B BR NO 087/105 (1 of 3)</b>									
REVISIONS AFTER PROPOSAL		BY	DATE	BY	DATE	BRIDGE SHEET			
		DESIGNED	NHDOT 9/87	CHECKED	NHDOT 9/87	16 OF XX			
		DRAWN	SMG 1/17	CHECKED	GMC 8/17	FILE NUMBER			
		QUANTITIES	PAB 8/17	CHECKED	GMC 8/17	XX-X-X			
		ISSUE DATE	9/87	FEDERAL PROJECT NO.		SHEET NO.		TOTAL SHEETS	
		REV. DATE	8/31/15	XX		1		1	
SUBDIRECTORY	DGN LOCATOR	SHEET SCALE							
BRC/087/105 POVERTYLANE	15580 Plow Plate Exp Jt	AS NOTED							

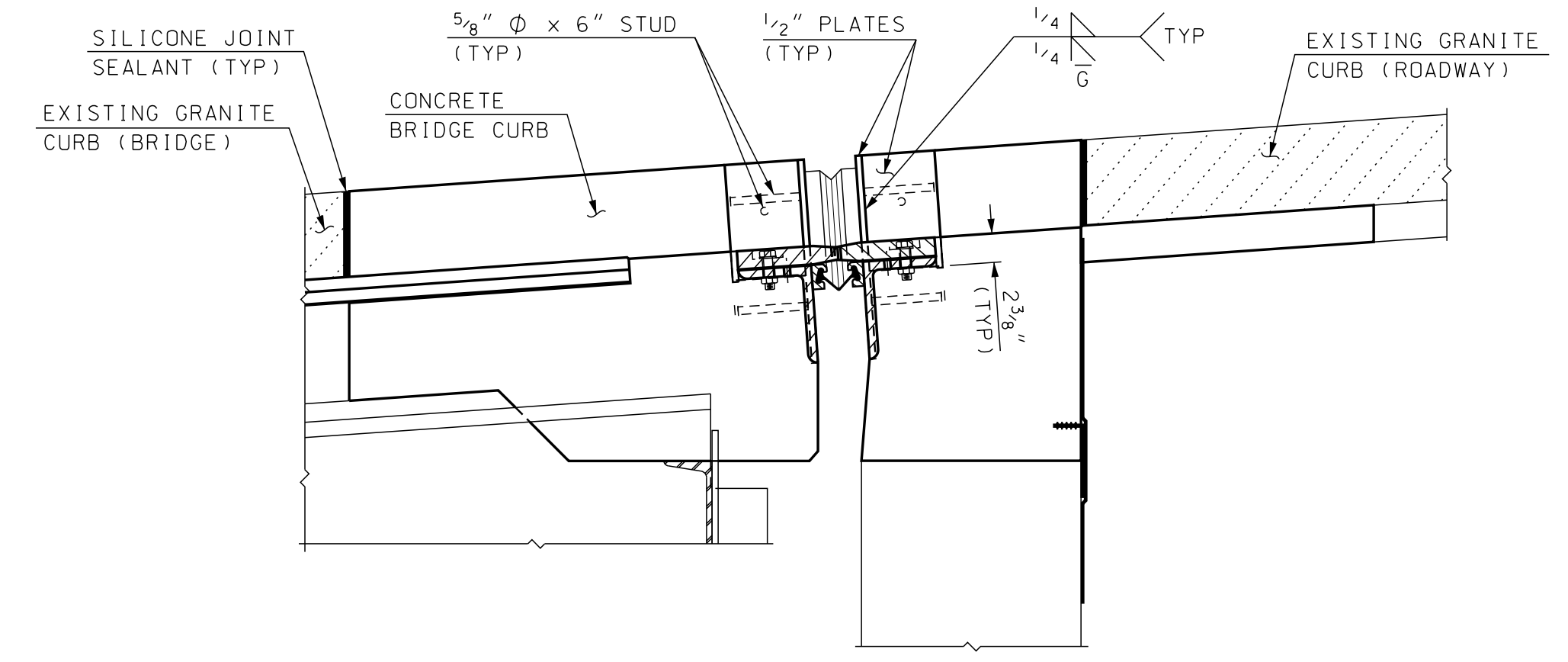




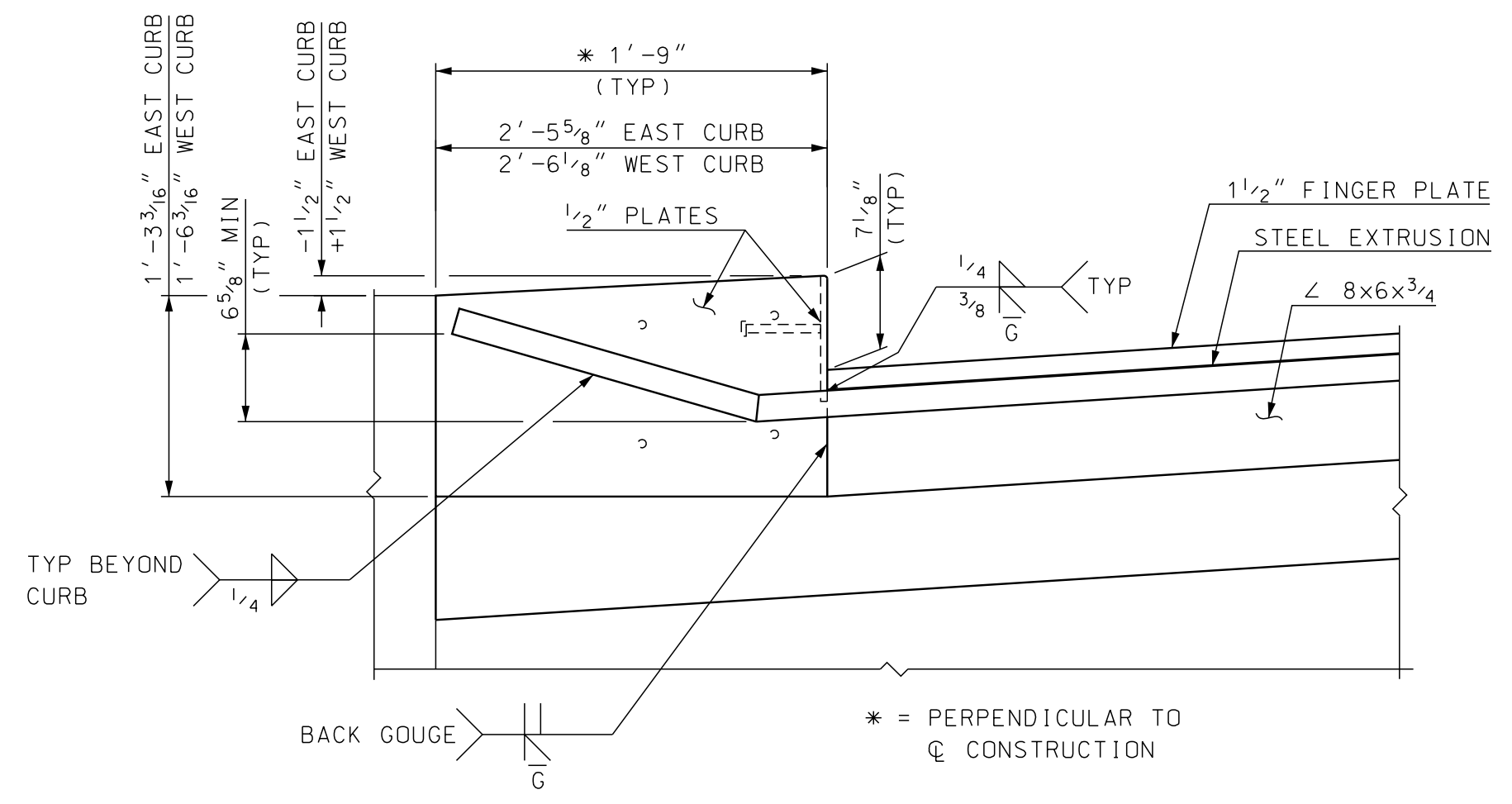
**SECTION A-A REMOVAL**  
SCALE: 1 1/2" = 1'-0"

NOTE: DETAILS AND NOTES MAY NOT BE CURRENT. CLOSELY REVIEW BEFORE USING DETAILS.

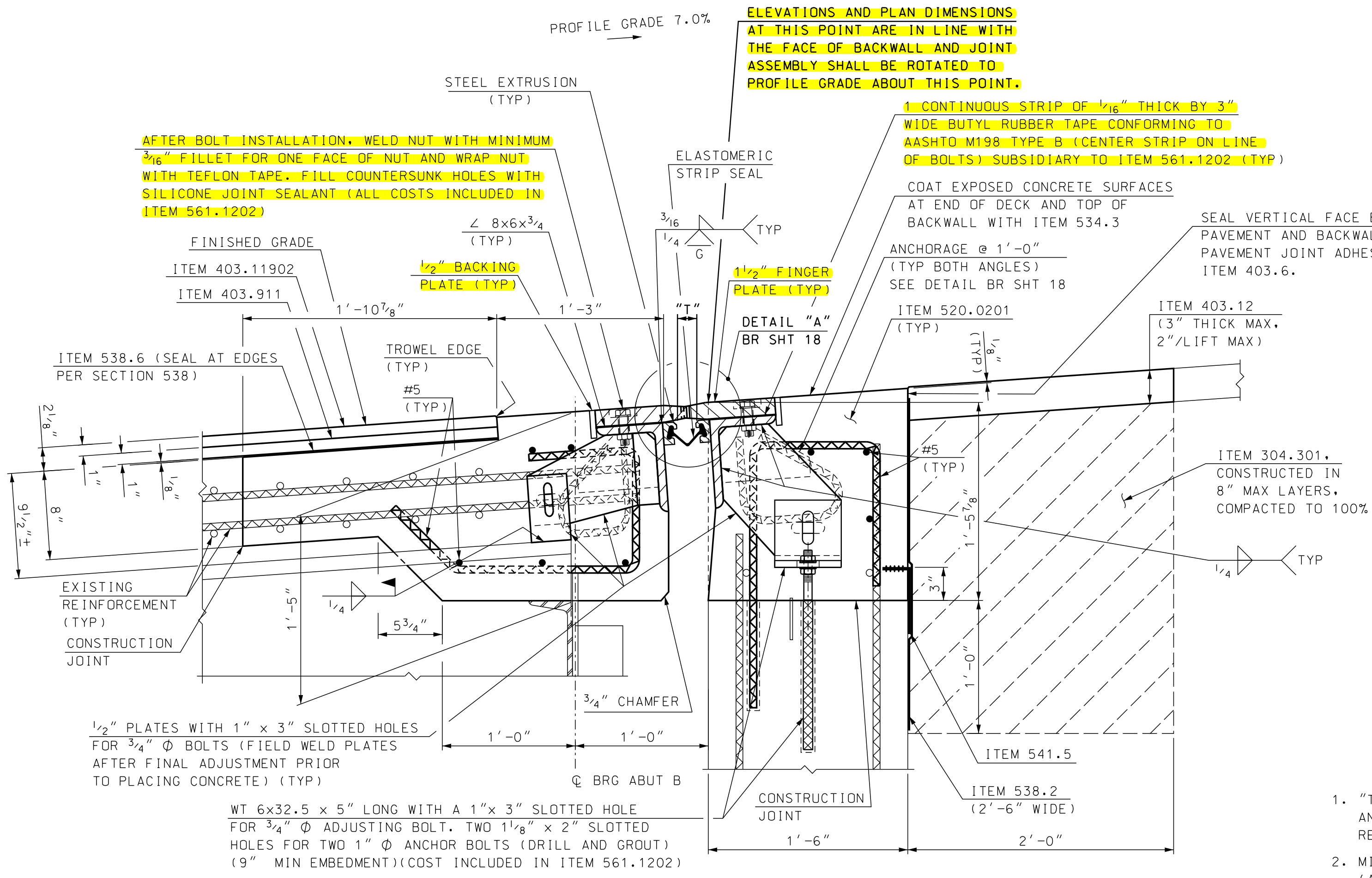
**SAMPLE PLAN**  
DATE: 08-2017



**SECTION B-B**  
SCALE: 1" = 1'-0"



**SECTION C-C**  
SCALE: 1" = 1'-0"

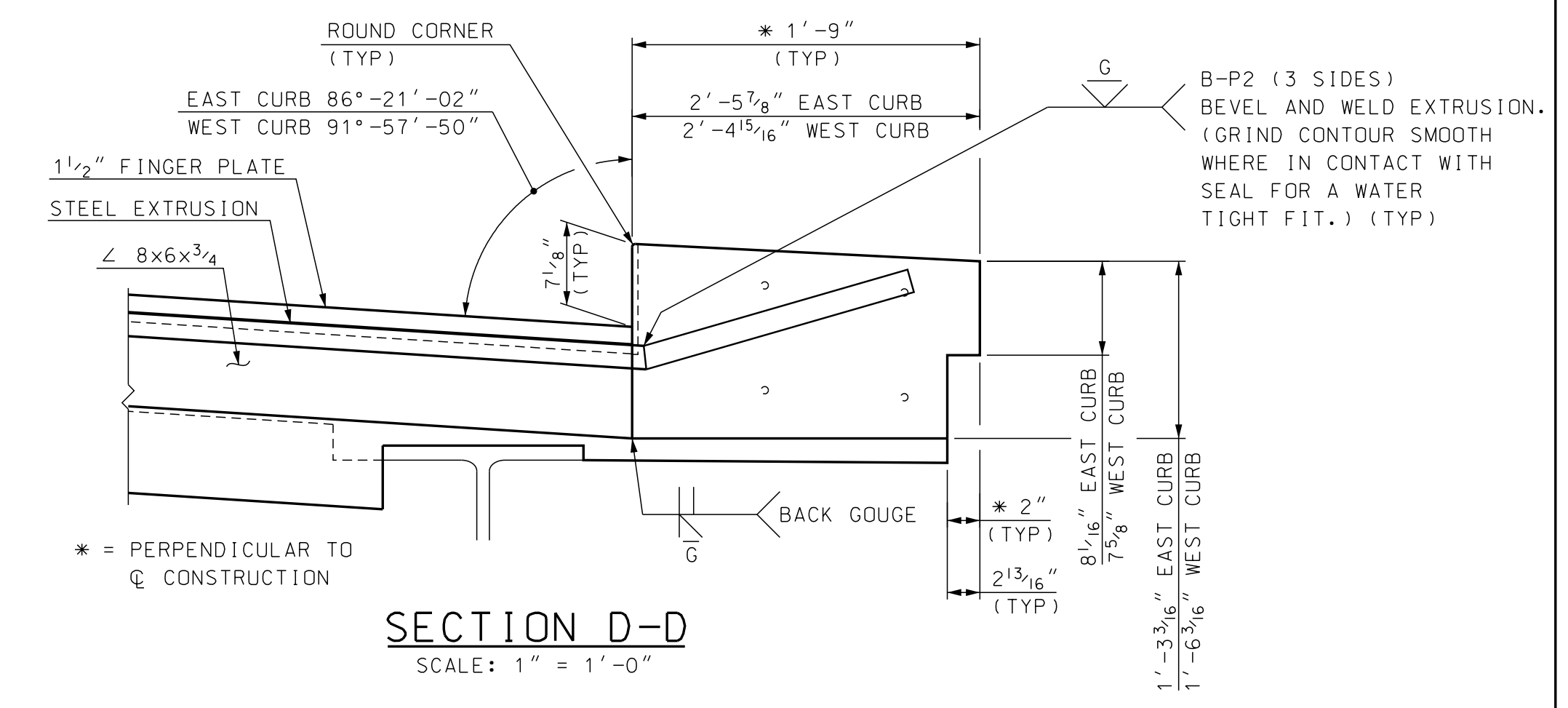


**SECTION A-A RECONSTRUCTION**  
SCALE: 1 1/2" = 1'-0"

TEMPERATURE ADJUSTMENT TABLE	
TEMPERATURE	"T"
20°F	2"
35°F	1 15/16"
50°F	1 13/16"
65°F	1 3/4"
80°F	1 11/16"
95°F	1 9/16"

**TEMPERATURE ADJUSTMENT NOTES**

- "T" DIMENSIONS ARE PERPENDICULAR TO FACE OF BACKWALL AND BETWEEN STEEL EXTRUSIONS. SEE SECTION A-A RECONSTRUCTION FOR LOCATION.
- MINIMUM "T" WIDTH FOR SEAL INSTALLATION = 1 3/4" (APPROXIMATELY 65°F OR LESS).
- VALUES IN THE TEMPERATURE ADJUSTMENT TABLE ARE FOR SETTING THE EXPANSION JOINT ASSEMBLY IMMEDIATELY PRIOR TO POURING CONCRETE BLOCKOUTS.

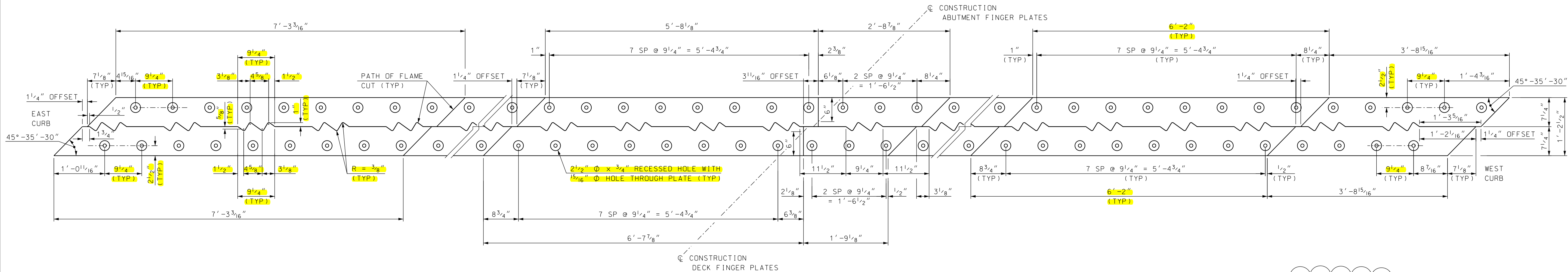


**SECTION D-D**  
SCALE: 1" = 1'-0"

FOR LOCATIONS OF SECTION A-A THROUGH D-D SEE BRIDGE SHEET 16.

STATE OF NEW HAMPSHIRE									
DEPARTMENT OF TRANSPORTATION * BUREAU OF BRIDGE DESIGN									
TOWN	LEBANON	BRIDGE NO.	087/105	STATE PROJECT	XX				
LOCATION						POVERTY LANE over I-89 NB & SB			
<b>STRIP SEAL EXP JT ABUT B BR NO 087/105 (2 of 3)</b>						BRIDGE SHEET			
REVISIONS AFTER PROPOSAL						17 OF XX			
DESIGNED	NHDOT	DATE	9/87	CHECKED	NHDOT	DATE	9/87	FILE NUMBER	
DRAWN	SMG	DATE	1/17	CHECKED	GMC	DATE	8/17	XX-X-X	
QUANTITIES	PAB	DATE	8/17	CHECKED	GMC	DATE	8/17		
ISSUE DATE	9/87	FEDERAL PROJECT NO.		SHEET NO.		TOTAL SHEETS			
REV. DATE	8/31/15	XX		1		1			

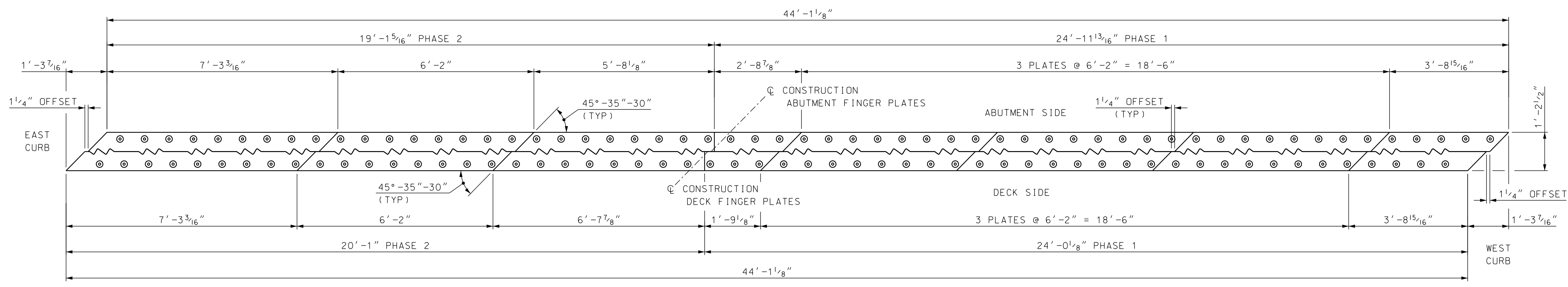
SUBDIRECTORY	DGN LOCATOR	SHEET SCALE
BRC/087/105 POVERTYLANE	15580 Plow Plate Exp Jt	AS NOTED



**ABUTMENT B FINGER CUTTING DETAIL**

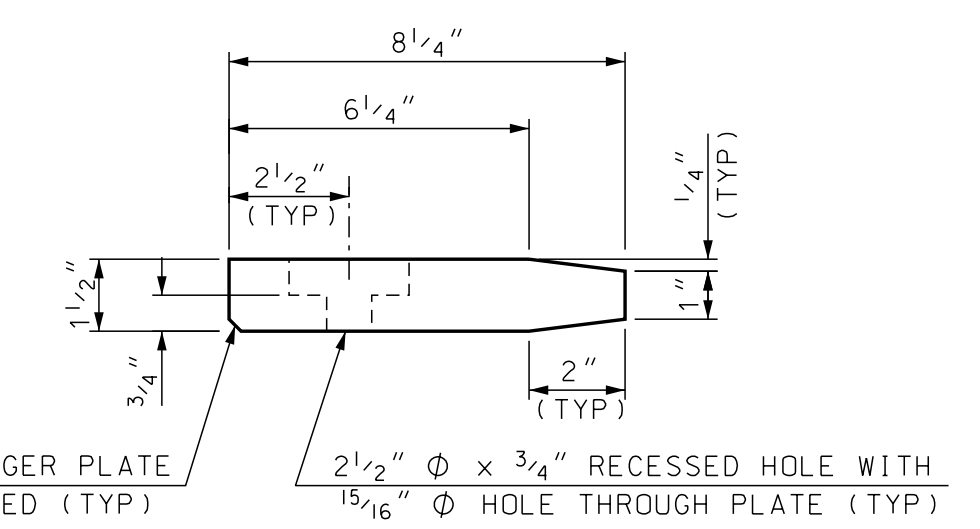
SCALE: 1" = 1'-0"

NOTE: DETAILS AND NOTES MAY NOT BE CURRENT. CLOSELY REVIEW BEFORE USING DETAILS.



**ABUTMENT B FINGER PLATE PLAN**

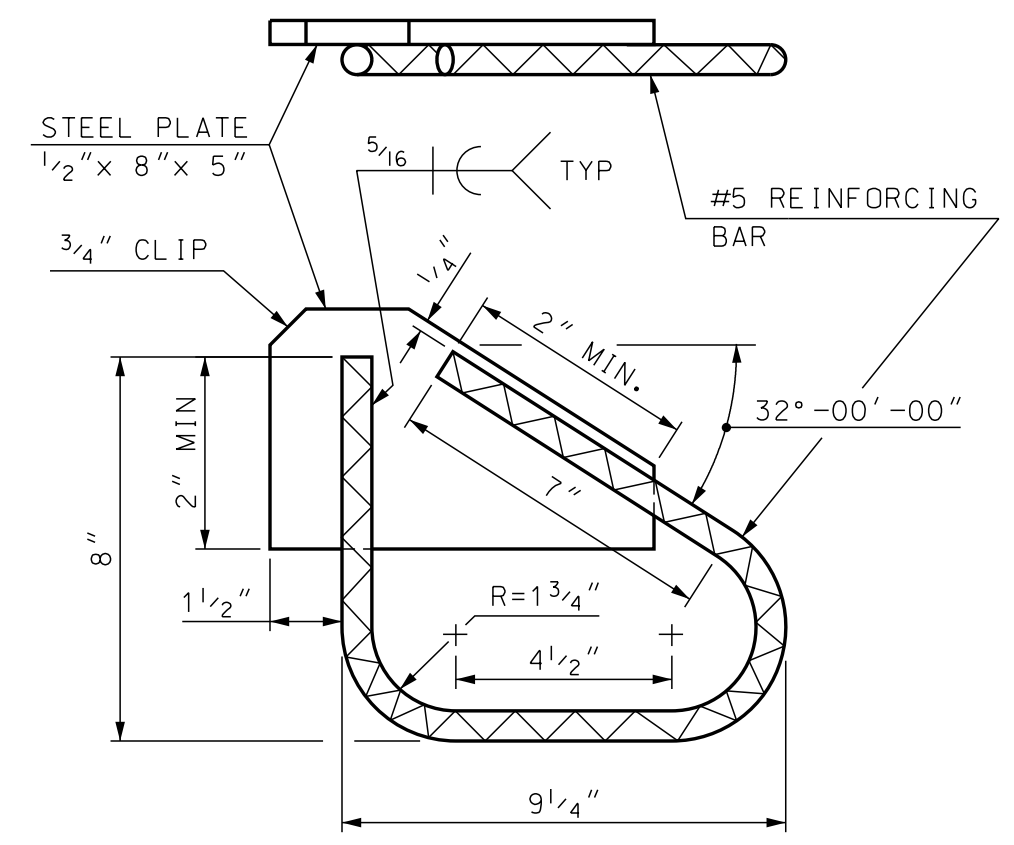
SCALE: 1/2" = 1'-0"



**DETAIL "A"**

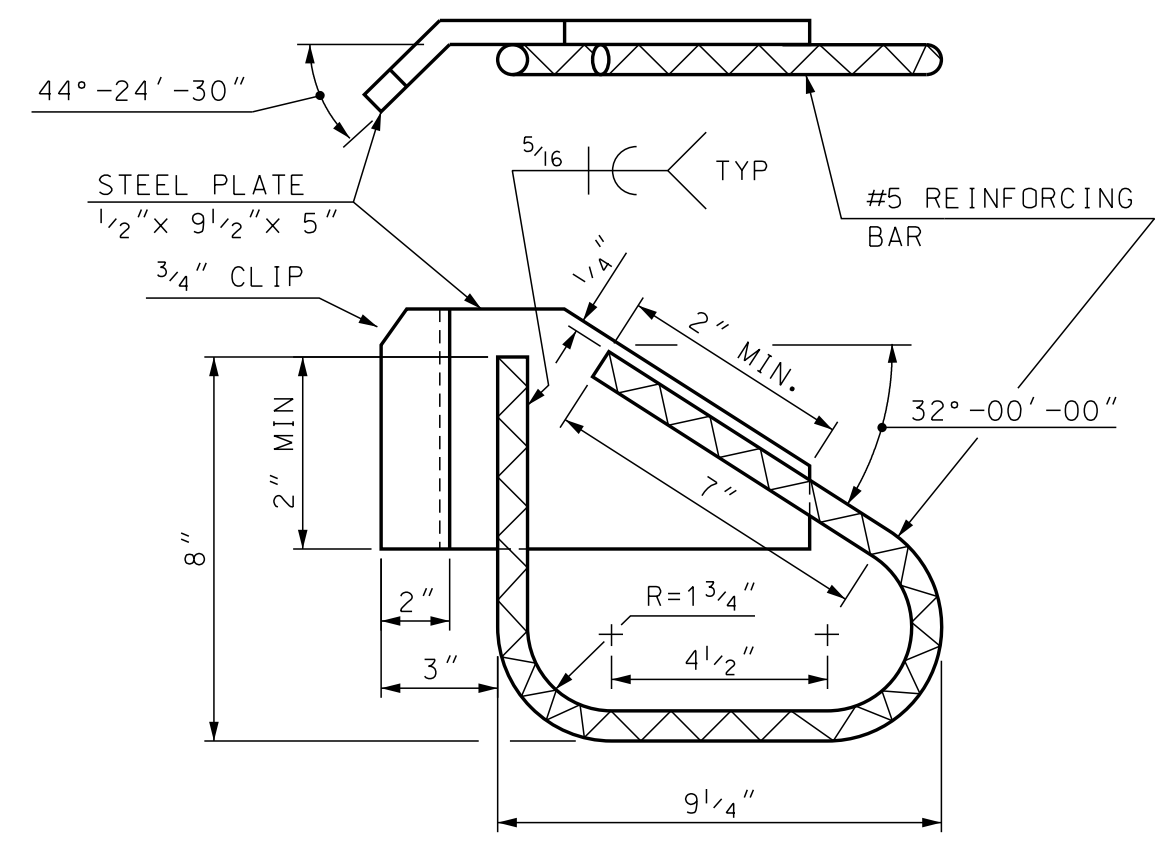
(FOR LOCATION SEE BR SHT XX)  
SCALE: 3" = 1'-0"

**SAMPLE PLAN**  
DATE: 08-2017



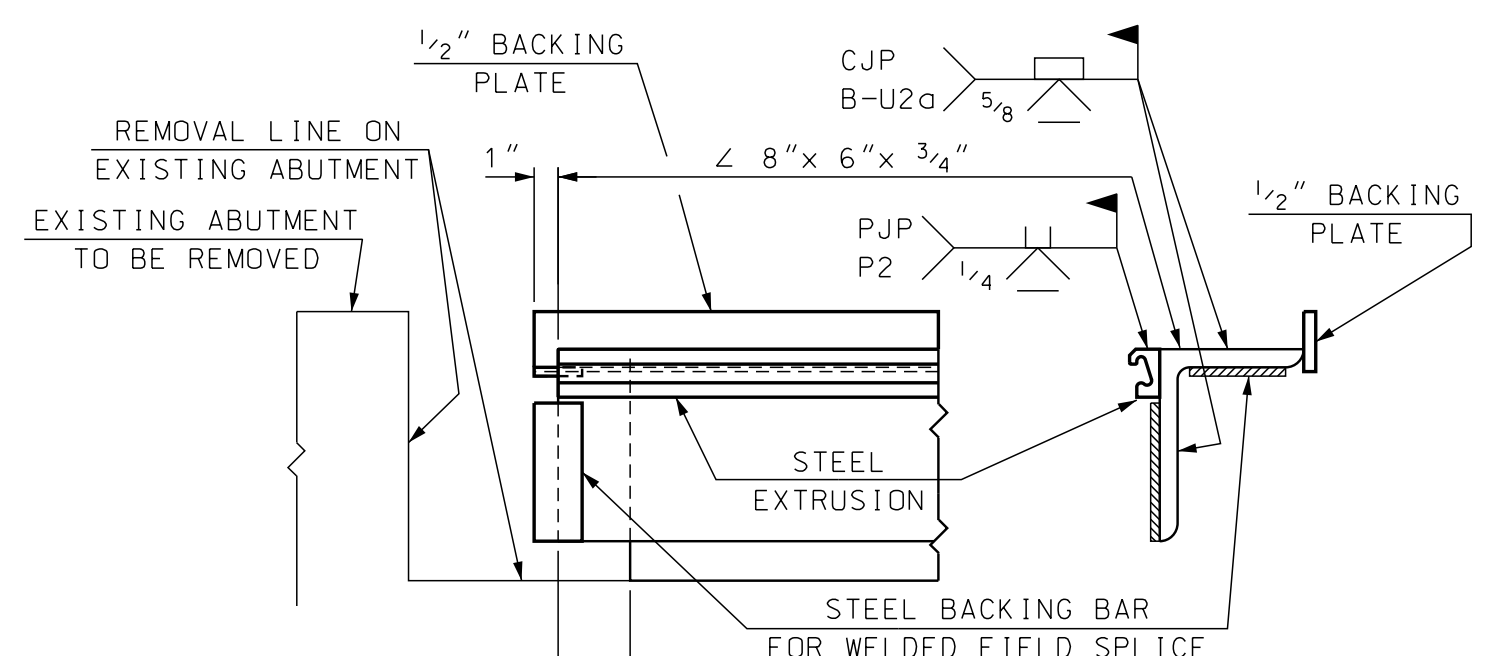
**BACKWALL ANCHORAGE DETAIL**

SCALE: 3" = 1'-0"



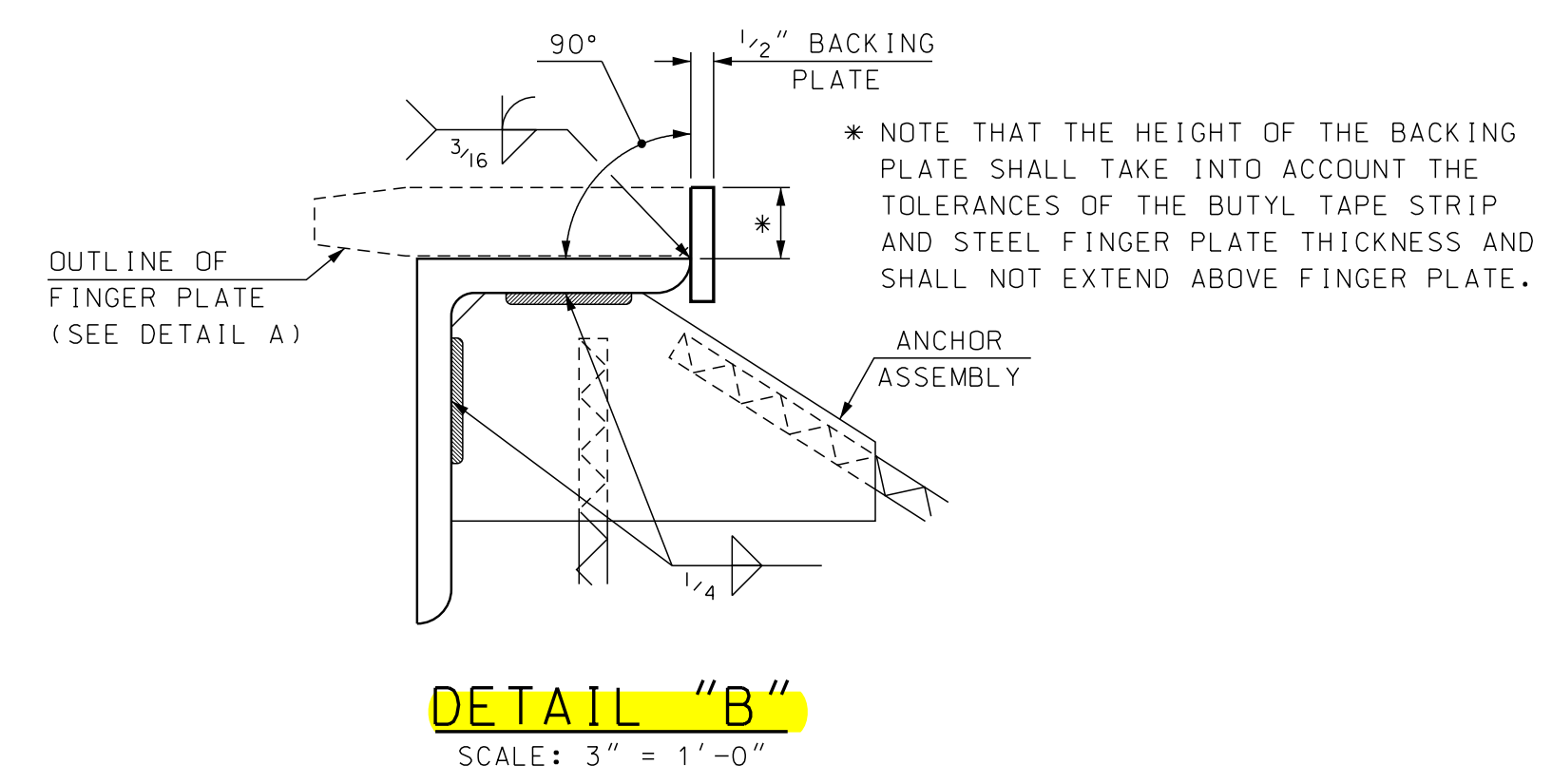
**DECK ANCHORAGE DETAIL**

SCALE: 3" = 1'-0"



**PHASE CONSTRUCTION - SPLICE DETAILS**

N.T.S.



**DETAIL "B"**

SCALE: 3" = 1'-0"

STATE OF NEW HAMPSHIRE					
DEPARTMENT OF TRANSPORTATION * BUREAU OF BRIDGE DESIGN					
TOWN	LEBANON	BRIDGE NO.	087/105	STATE PROJECT	XX
LOCATION	POVERTY LANE over I-89 NB & SB				
STRIP SEAL EXP JT ABUT B BR NO 087/105 (3 of 3)					BRIDGE SHEET
REVISIONS AFTER PROPOSAL					18 of XX
DESIGNED	NHDOT	DATE	9/87	CHECKED	NHDOT 9/87
DRAWN	SMG	DATE	1/17	CHECKED	GMC 8/17
QUANTITIES	PAB	DATE	8/17	CHECKED	GMC 8/17
ISSUE DATE	9/87	FEDERAL PROJECT NO.		SHEET NO.	
REV. DATE	8/31/15	XX		1	1

SUBDIRECTORY	DGN LOCATOR	SHEET SCALE
BRC/087/105 POVERTYLANE	15580 Plow Plate Exp Jt	AS NOTED