


Hinsdale-Brattleboro Existing Bridges Subcommittee Meeting

April 30, 2020



TODAY'S AGENDA

- I. Minutes of August 29, 2019
 - II. Project Updates
 - III. Updates on Student Assistance with Visioning and Public Involvement
 - IV. Public Involvement Brochure
 - V. Next Steps
 - VI. Next Meeting
 - VII. Public Comment
 - VIII. Adjourn
- 

I. MINUTES OF AUGUST 29, 2019



II. PROJECT UPDATES



III. UPDATES ON STUDENT ASSISTANCE WITH VISIONING AND PUBLIC INVOLVEMENT

Background on UMass Amherst Landscape Architecture Student Studio
Class



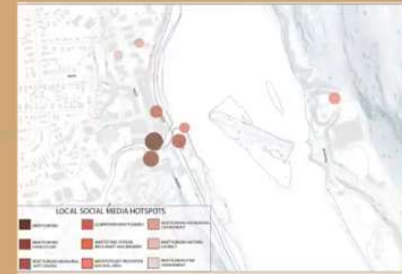
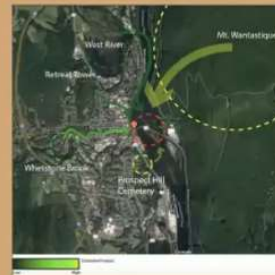


Brattleboro and Hinsdale Bridge Project

397D Junior Class - Instructors: Joshua Burgel and Robert Ryan - 2020

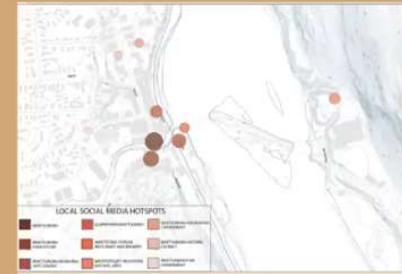
Studio Goals

- Site Analysis
- Site systems
- Historical and Cultural Crossroads
- Grading/Topography
- Climate Intensification
- Public Considerations
- Planting for Purpose



Studio Layout

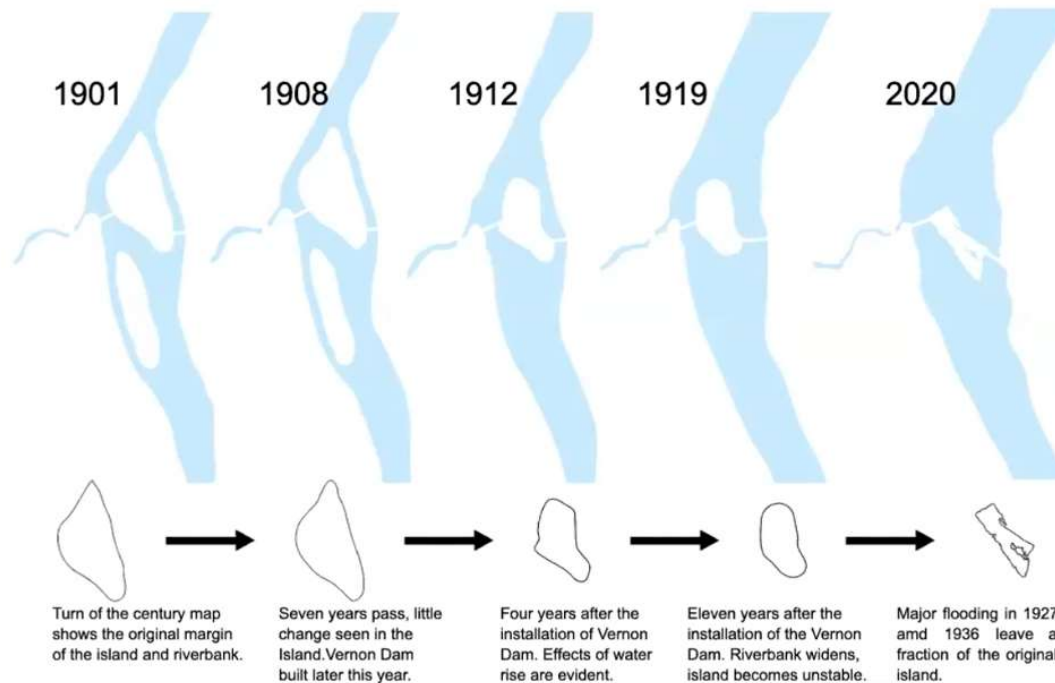
- Site Visit
- Site diagrams/systems
- Case studies



Historical Photos



Island Shape Transformation



*Maps are referenced from the Library of Congress records of the Sanborn Map Company fire maps.

1804
Private toll company builds bridge over the island

1850s
Whetstone falls powered several sawmills and gristmills in town

Mid 1860s
Logging and water driven industry thrives as Brattleboro grows

1869
Flood washes the bridge and part of the island away

1880s
Brattleboro and Hiesdale join and buy toll, making the island open and free to the public

1908
Vernon Dam built

1911
Island Park is built, there are 8,500 Brattleboro residents at the time

1912
Both William H. Taft and Theodore Roosevelt hold campaign rallies on Island Park

1927
Major flood and ice out wash away much of the island

1936
Largest recorded flood in Brattleboro history washes most of island away

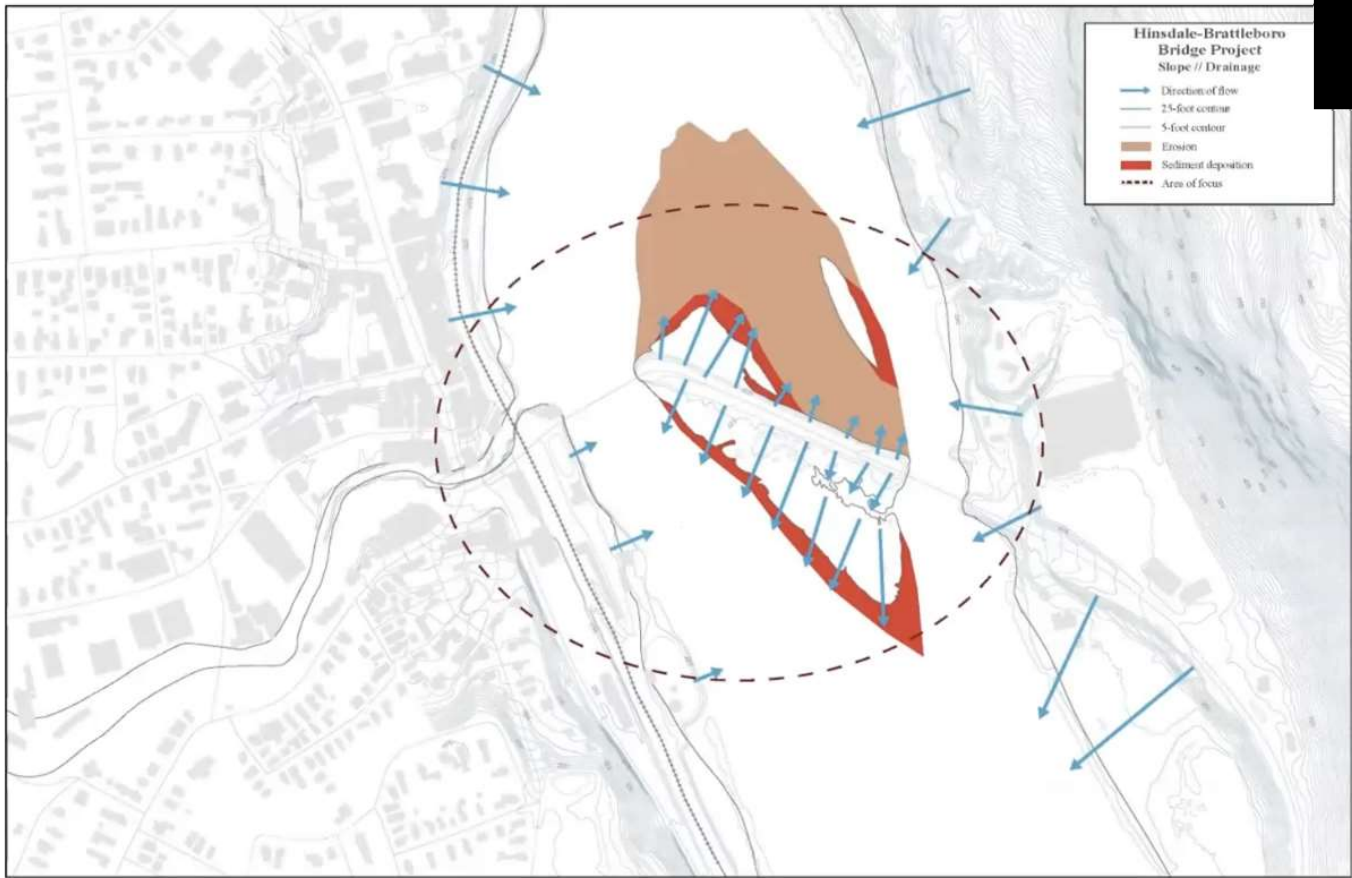
The Rise and Fall of Island Park

A look into the modern history of the island tells a tale of flood after flood in the Connecticut River. The same waterpower that was harvested in both the Whetstone Brook and Connecticut River often overpowered human interventions and led to destruction of several bridges and roads. Island Park had a short run following the construction of Vernon Dam lasting only 16 years as the water level rose and the island and its buildings became unstable.

A Larger Scope:

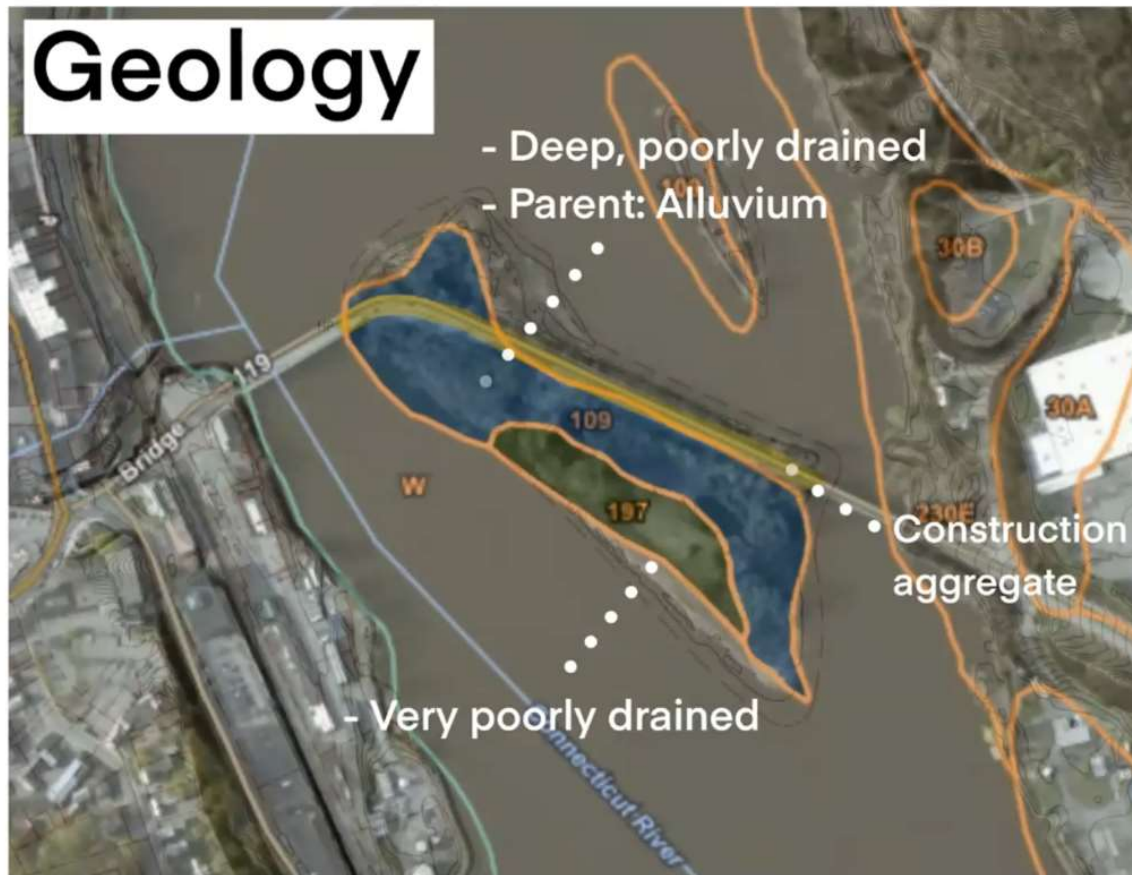
- Abenaki tribe lives for thousands of years before colonization
- Fort Dummer built in 1724 during French and Indian wars
- Fort Dummer grows into an early town and is later renamed Brattleborough after Col. William Brattle Jr (whom never set foot in the namesake)
- First toll bridges the Connecticut River for the first time in 1804
- Vermont Yankee begins operates from 1972 to 2014
- Anette Spalding rediscovers Abenaki petroglyphs in Brattleboro







Geology



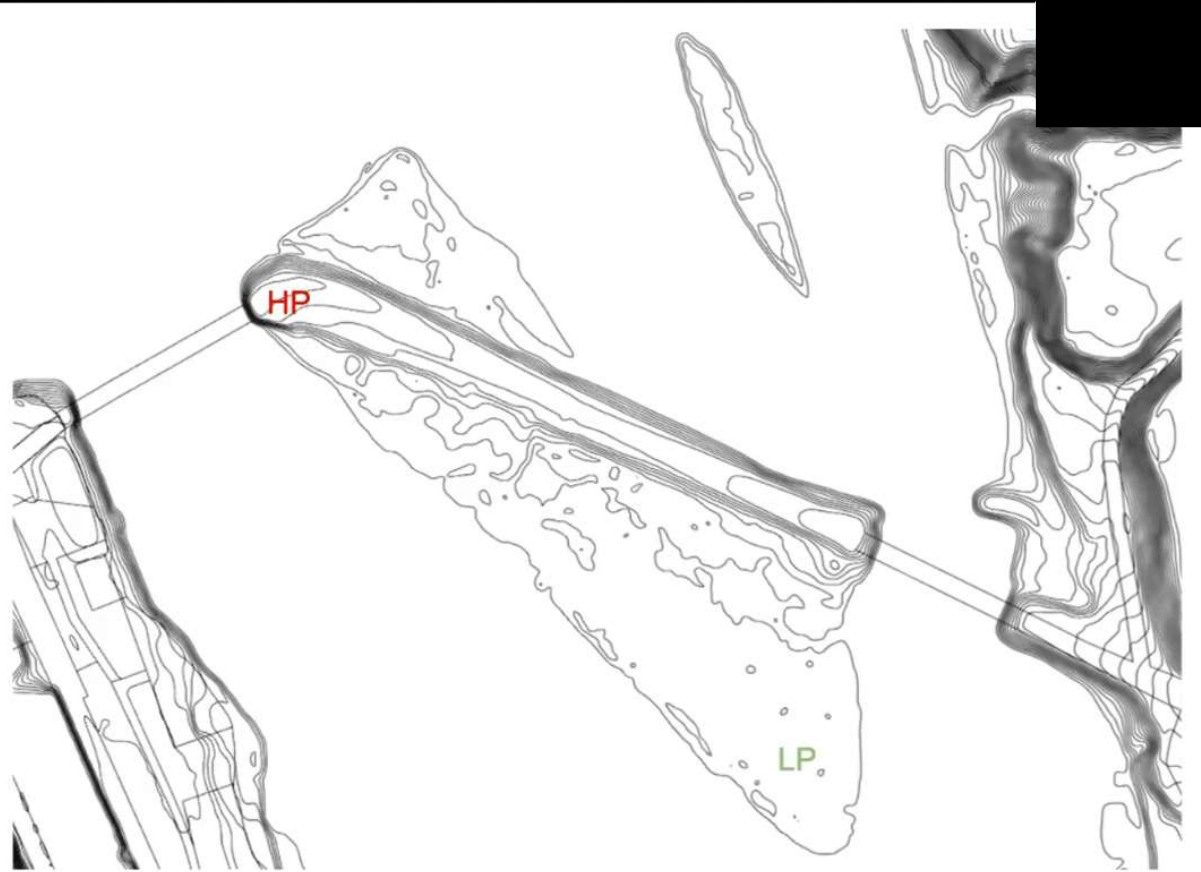
Hinsdale Island Project
Umass Larp
Professor Robert Ryan
Josh Burgel
Prepared By: Taurean Gagnon

Contours: 2'

-  Limerick silt loam
-  Borochemist
-  Crushed stone/gravel



- **High Point** = 235'
- **Low Point** = 217'
- Slope is steepest near existing road
- Lowest elevation located in wetland







Site Assessment

Challenges

- Flooding
- Creating a fluid connection between the island and respective mainlands
- Existing grade with steep slope
- Wetlands
- Natural habitats

Opportunities

- Brattleboro Downtown
 - Views
 - People attraction
- Wantastiquet Mountain
 - Views
 - Regional trail connection
- Regional bike network
- Anna Hunt Marsh Bridge
- Charles Dana Bridge
- Connecticut River
- Connection between city and nature



III. UPDATES ON STUDENT ASSISTANCE WITH VISIONING AND PUBLIC INVOLVEMENT

Examples of Student Concepts – Example 1



Carter Roy-Island Park (Slide 7 of 15)

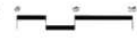


Section

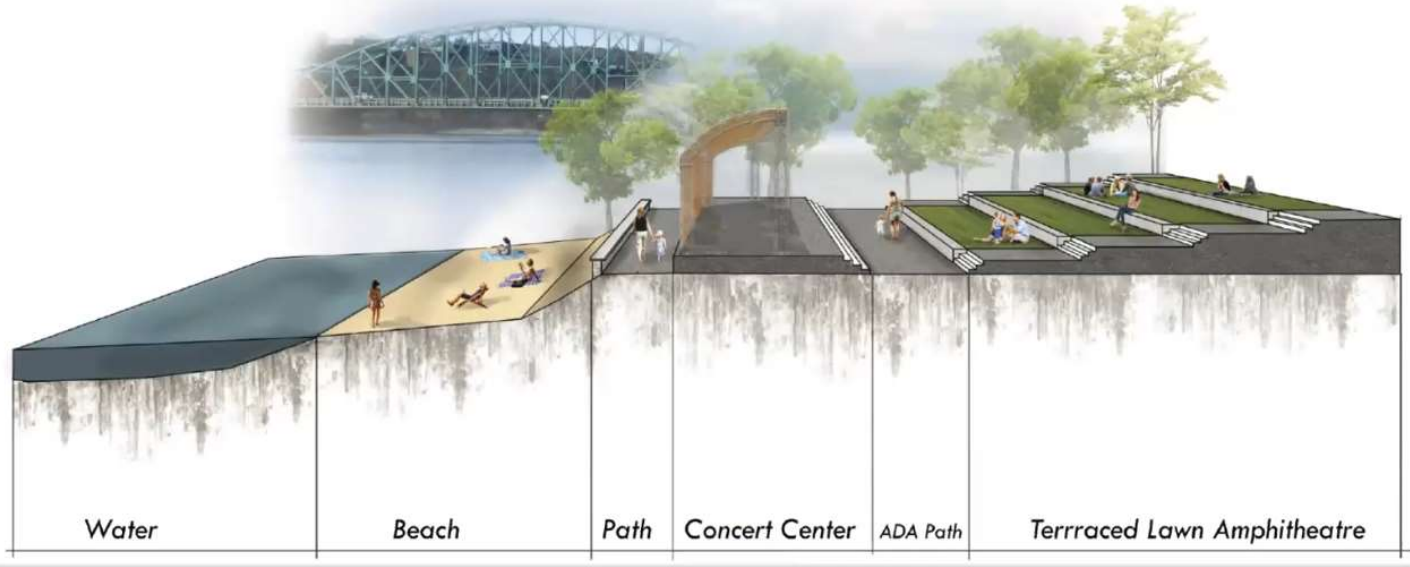


Section B

Scale 1"=10'



Amphitheatre+River Front Beach



Water Beach Path Concert Center ADA Path Terraced Lawn Amphitheatre



Black Eyed Susan



Butterfly Bush



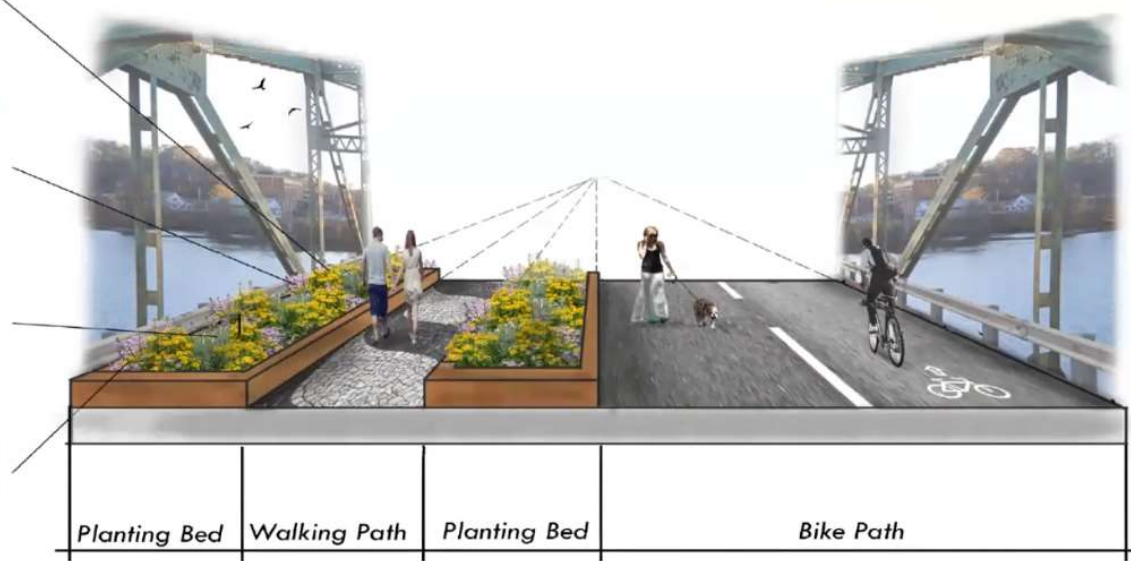
Azure Snow Salvia



Purple Verbena



Brattleboro Community Bridge



Carter Roy-Island Park (Slide 14 of 15)



Go to the next slide

1x 0:00 / 0:00

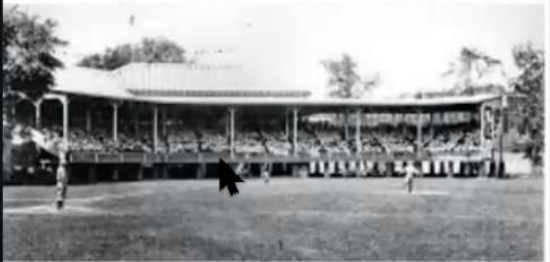
00:39:31 / 02:24:12

2.0x

III. UPDATES ON STUDENT ASSISTANCE WITH VISIONING AND PUBLIC INVOLVEMENT

Examples of Student Concepts – Example 2

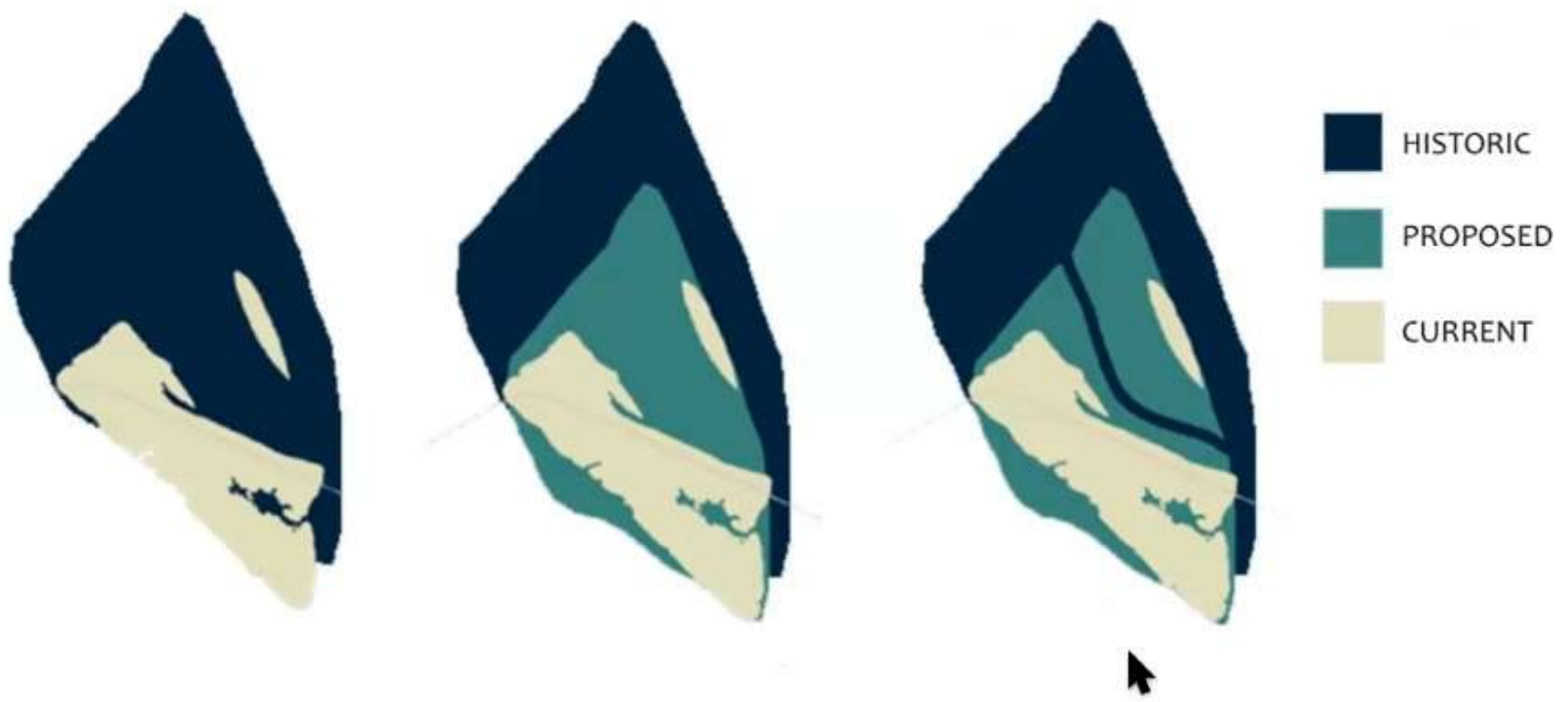
A decorative graphic consisting of several parallel white lines of varying lengths, slanted upwards from left to right, positioned in the lower right quadrant of the slide.



CONCEPT:
GROWING AN ISLAND,
GROWING A COMMUNITY



CONCEPT: GROWING AN ISLAND, GROWING A COMMUNITY



SPECTACLE ISLAND

- Used for farming, as a factory, hospital, hotel, garbage dump
- Expanded using fill from Central Artery
- Returned to the public, hiking, beaches, visitors center

OUR ISLAND

- Use fill removed from new Rt 119 bridge construction
- Fill from local NH/VT projects
- Jetty, accelerate sediment accumulation
 - Help contain and trap shifting sediment
 - 'creation of the jetties approximately doubled the rate of land buildup'

Oregon State: Columbia River Jetty



TCLF SPECTACLE ISLAND



Image source: J.E. McAmis



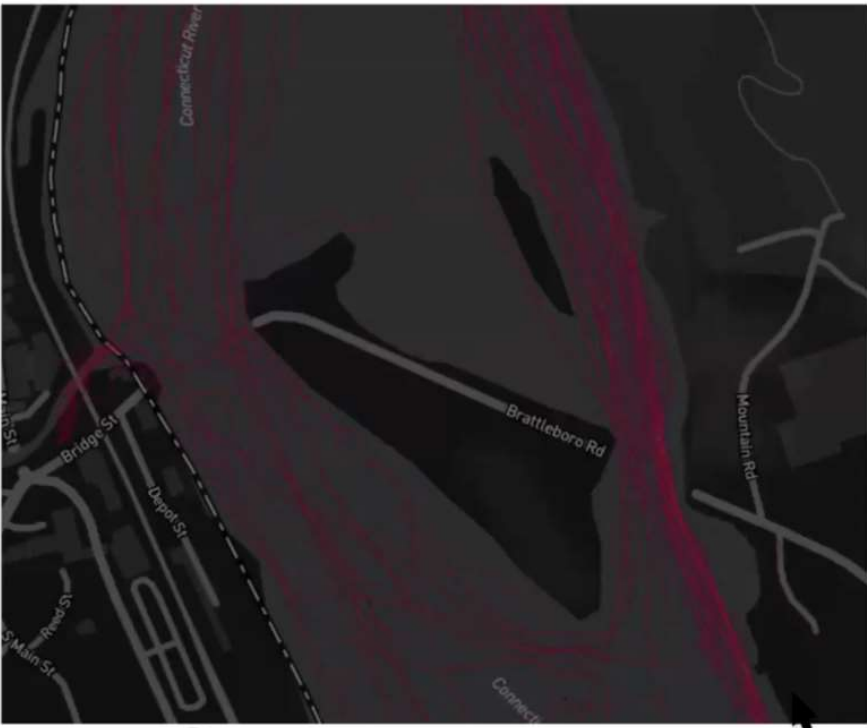
OVERHEAD INSTALLATION



KAYAK LAUNCH

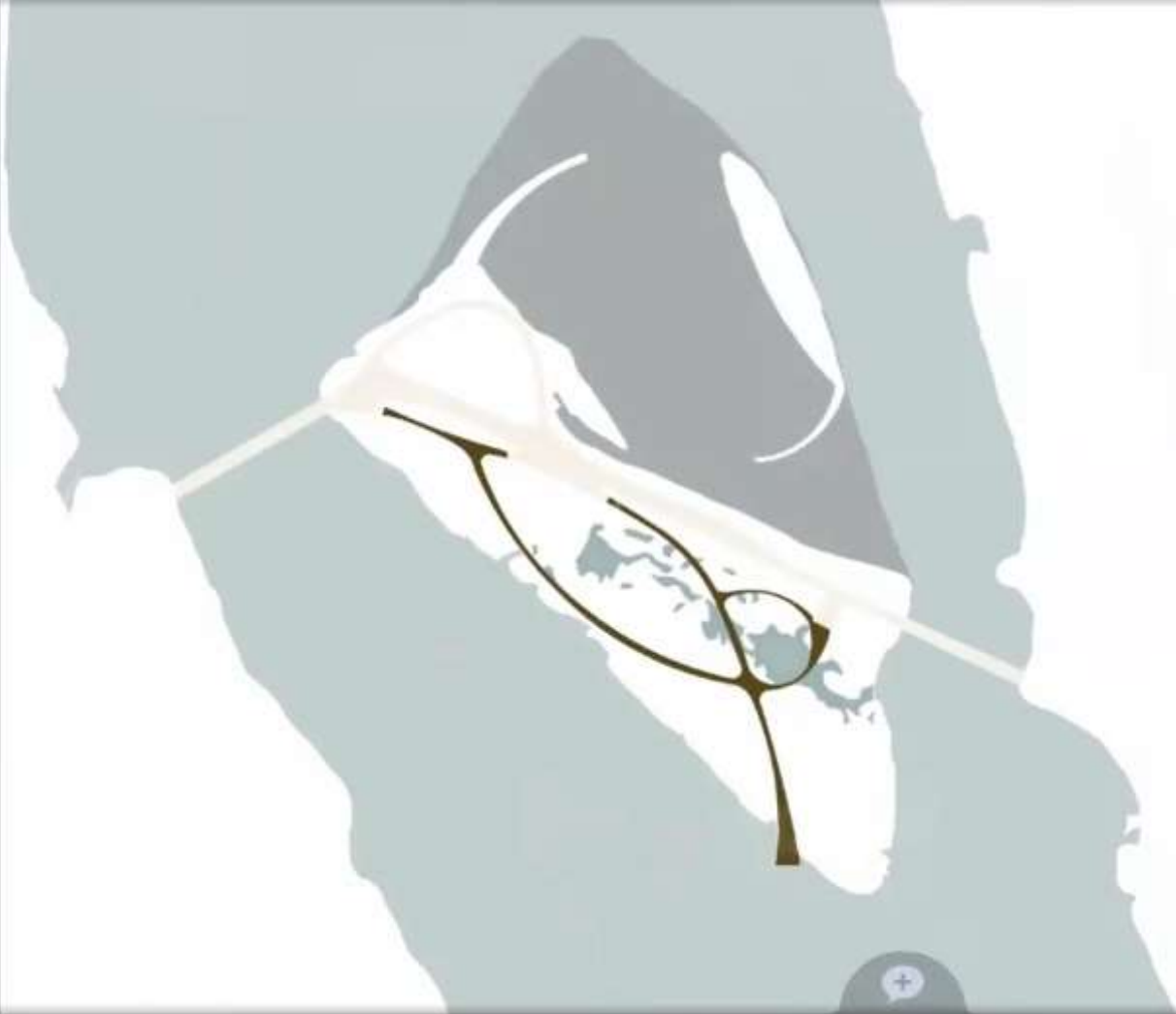
POTENTIAL CONNECTIONS

- Strengthen existing engagment with the island
- Mount Wantastiquet State Forest
 - Chesterfield Conservation Commission, organized recreation
 - Wantastiquet-Monadnock Coalition, promote and program
- Norms Marina
 - HOST 10 professional fishing tournaments
 - Kayaks and canoes rentals



STRAVA TRACKED WATER RECREATION





PHASE 3



III. UPDATES ON STUDENT ASSISTANCE WITH VISIONING AND PUBLIC INVOLVEMENT

Examples of Student Concepts – Example 3

A decorative graphic consisting of several parallel white lines of varying lengths, slanted upwards from left to right, located in the bottom right corner of the slide.

Search >>

JH





Abstract history and apply it to present day site through sculpture and infrastructure



YESTERDAY

Bottleneck under bridge was a common point for log jams



TODAY

Island and river are bare of historical reference

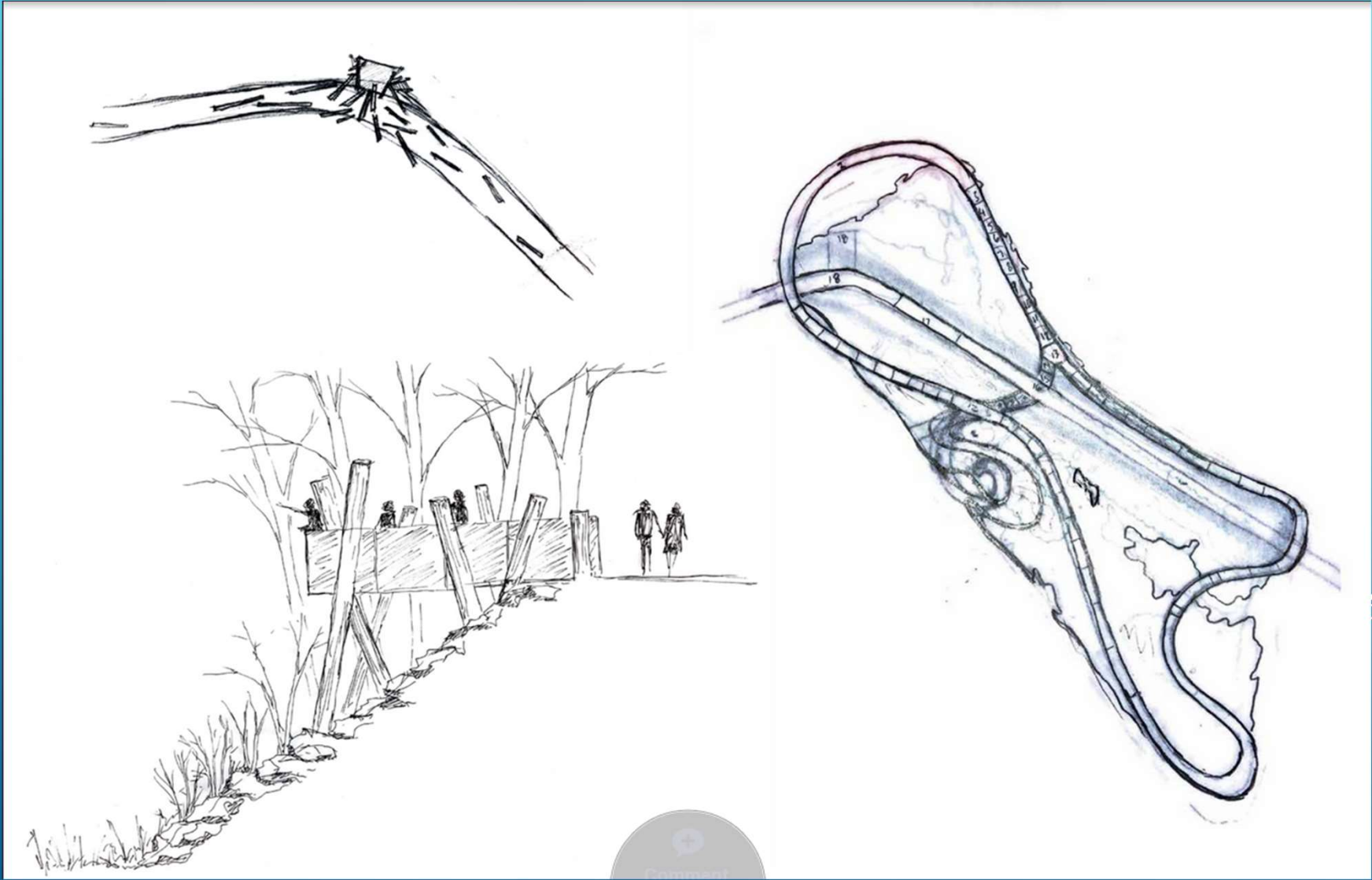


TOMORROW

Point under bridge becomes an opportunity to educate the public of local history

LANDSCAPE ELEMENTS TRAVEL OFF OF THE BRIDGE TO INVITE THE COMMUNITY ONTO THE ISLAND.
A SMALL PLAZA AT THE MOUTH OF THE BRIDGE ACTS AS A SHARED CULTURAL RESOURCE TO DISPLAY
ART AND HOST COMMUNITY EVENTS.







FOOD CO-OP

PROPOSED LOCATION FOR ART MUSEUM

INTERPRETATIVE SIGNAGE

TIMBER DETAIL CARRIED FROM ISLAND



MALFUNCTION JUNCTION TODAY



MALFUNCTION JUNCTION
REIMAGINED...

IV. PUBLIC INVOLVEMENT BROCHURE



DRAFT

A new bridge is coming!

The Hinsdale, NH – Brattleboro, VT VT/NH Route 119 Bridge Project will bypass two historic truss bridges carrying VT/NH Route 119 over the Connecticut River by constructing a new bridge approximately 1,000 feet downstream. The Anna Hunt Marsh Bridge and the Charles Dana Bridge connect the Towns of Hinsdale, New Hampshire and Brattleboro, Vermont by way of a small island (Hinsdale Island) located in the Connecticut River. The bridges were originally constructed in 1920. The Project proposes a single new bridge to provide safer transportation of vehicles and freight by bypassing the current bridges, leaving the historical structures to be used by pedestrians and bicyclists and for other recreational opportunities available on the island.

Vision 2020: Bridging Our Communities is looking for public input to develop more specific plans on how the historic bridges and Island area will be used.

Want to learn more about this project?

Contact us!

Windham Regional Commission
139 Main Street, Suite 505
Brattleboro, VT 05301
(802) 257-4547
wrc@windhamregional.org

Southwest Region Planning Commission
37 Ashuelot Street
Keene, NH 03431
(603) 357-0557
jbmack@swrpc.org

VISION 2020: BRIDGING OUR COMMUNITIES

A bi-state community planning effort to determine the redesign and reuse of the historical Charles Dana and Anna Hunt Marsh Bridges, Hinsdale Island and their connections to Brattleboro, VT, Hinsdale, NH and the Connecticut River.

An initiative sponsored by the Town of Hinsdale, NH and Town of Brattleboro, VT with technical assistance from:



DRAFT

Starting in the fall of 2020, the Project Advisory Committee for the Hinsdale-Brattleboro Bridge project will be seeking public input on the future reuse of the Charles Dana and Anna Hunt Marsh and Hinsdale Island area. **Be on the lookout for:**



Public Meetings

Meetings are planned to talk about the opportunity, get feedback on goals for the area, and solicit ideas on ways to reuse the area.



A Survey

An online survey requesting feedback on the project will be made available on the websites of the Town of Brattleboro, Town of Hinsdale, Windham Regional Commission and Southwest Region Planning Commission



Open Houses

The Project Advisory Committee will work with Master's Degree Landscape Architecture and Planning students to develop designs of the space based on public input at Open House events.

The Vision 2020: Bridging Our Communities effort has developed the following goals driving a future vision for this important connection between Brattleboro, VT and Hinsdale, NH:

- Strengthen area social and economic relationships
- Promote active transportation (walking, bicycling, etc.)
- Enhance recreation opportunities and river access
- Preserve the integrity of natural, historic and cultural resources
- Conserve fiscal resources and minimize impact on local taxpayers
- Ensure area is safe and clean

"This is a tremendous opportunity to transform our town waterfronts"

- Joe Smith, Hinsdale Selectman

"I hope that the whole community gets involved. Possibilities are endless for economic development, recreation and reconnecting our communities with the Connecticut River."

- Jane Thompson, Brattleboro Selectman

V. NEXT STEPS



VI. NEXT MEETING



VII. PUBLIC COMMENT



VIII. ADJOURN

