

HINSDALE 042/044

NH119 over CONNECTICUT RIVER

Tuesday, September 27, 2016

BOTTOM EDGE OF GUSSET
PLATE AT FLOORBEAM # 2,
SOUTH, RUSTED AND
HOLED.



B568 52

Tuesday, September 27, 2016

LATERAL BRACING
CONNECTION PLATE
HOLED AT SOUTH END OF
FLOORBEAM # 5.



B568 53

Tuesday, September 27, 2016

COVER PLATE HOLED AT
LOWER CORD SPLICE,
SOUTH END OF
FLOORBEAM # 6.



B568 54

HINSDALE 042/044

NH119 over CONNECTICUT RIVER

Tuesday, September 27, 2016

GUSSET PLATE AND BEARING SPACER PLATE HOLED, BEARING # 1, PIER # 2.



B568 55

Tuesday, September 27, 2016

PAINT PEELING, LIGHT SURFACE RUST AT UPPER CORD.



B568 56

Tuesday, September 27, 2016

WEARING SURFACE POTHOLED AT EAST END OF EASTBOUND LANE.



B568 57

HINSDALE 042/044
NH119 over CONNECTICUT RIVER

Monday, August 18, 2014

NEW PLANKS ON SIDEWALK.



B506 21

Monday, August 18, 2014

PACK RUST AT LOWER
CHORD AT NORTH.



B506 22

Monday, August 18, 2014

UNDERSIDE VIEW OF DECK
AND FLOOR SYSTEM.



B506 23

HINSDALE 042/044
NH119 over CONNECTICUT RIVER

Monday, August 18, 2014

CONNECTION PLATE
REPAIRED.



B506 24

Monday, August 18, 2014

CONNECTION PLATE
HOLED.



B506 25

Monday, August 18, 2014

SPALL AT PIER 2.



B506 26

HINSDALE 042/044
NH119 over CONNECTICUT RIVER

Monday, August 18, 2014

HOLE IN GUSSET PLATE AT
BEARING 1 PIER 2.



B506 27

Monday, August 18, 2014

BEARING # 2 AT PIER #2.

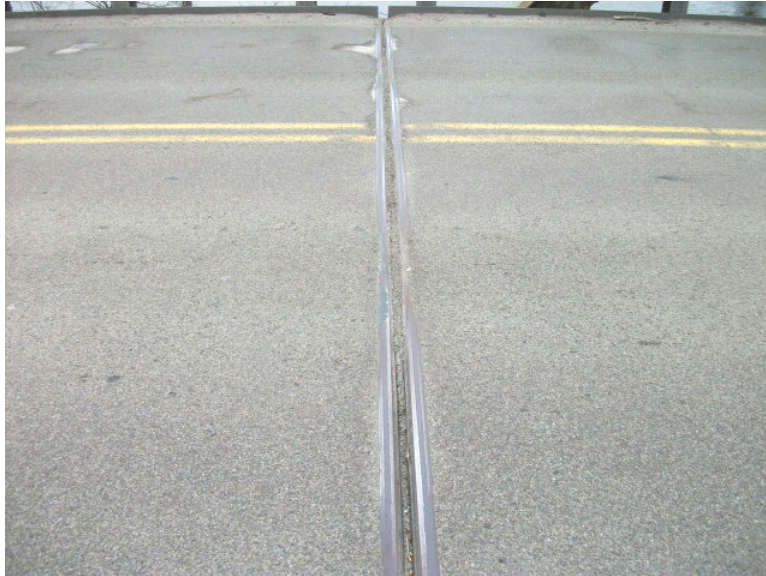


B506 28

HINSDALE 042/044
NH119 over CONNECTICUT RIVER

Tuesday, April 30, 2013

MINOR ADHESION FAILURE
AT JOINT #3.



B460 42

Tuesday, April 30, 2013

SIDEWALK PLANKS
CURLING, A FEW LOOSE.



B460 43

Tuesday, April 30, 2013

GUSSET PLATE HOLED AT
BEARING #1 AT PIER #2.



B460 44

HINSDALE 042/044

NH119 over CONNECTICUT RIVER

Tuesday, April 30, 2013

UNDERSIDE OF GUSSET
PLATES, BEARING #1 AT
PIER #2.



B460 45

Tuesday, April 30, 2013

LARGE SPALL AT COLUMN
#1, PIER #2.



B460 46

Tuesday, April 30, 2013

LOWER LATERAL BRACING
CONNECTION PLATE
HOLED BOTH SIDES OF
FLOORBEAM #9.



B460 47

HINSDALE 042/044
NH119 over CONNECTICUT RIVER

Tuesday, April 30, 2013

SECTION LOSS AT BOTTOM
CHORD, BAY #10.

B460 48



Tuesday, April 30, 2013

PACK RUST AT BOTTOM
CHORD.

B460 49



Tuesday, April 30, 2013

SECTION LOSS AT NORTH
EXTERIOR STRINGER, 3/8"
REMAINING.

B460 50



HINSDALE 042/044
NH119 over CONNECTICUT RIVER

Tuesday, April 30, 2013

RUST, SCALE, MINOR
SECTION LOSS, TYPICAL OF
MOST GUSSET PLATES.

B460 51



Tuesday, April 30, 2013

VIEW OF STRINGERS,
LOWER LATERAL BRACING,
FLOORBEAMS, TYPICAL OF
MOST.

B460 52



Tuesday, April 30, 2013

CONNECTION PLATE AND
LOWER LATERAL BRACING
HOLED AT FLOORBEAM #5,
AT SOUTHWEST.

B460 53



HINSDALE 042/044
NH119 over CONNECTICUT RIVER

Tuesday, April 30, 2013

SECTION LOSS AT BOTTOM
OF GUSSET PLATE AT
FLOORBEAM #4, AT SOUTH.

B460 54



Tuesday, April 30, 2013

CONNECTION PLATE KNIFE-
EDGED AT FLOORBEAM #3.

B460 55



Tuesday, April 30, 2013

PIER # 1 SPALLED AT
SOUTHWEST, UNDER
BEARING #1.

B460 56



HINSDALE 042/044
NH119 over CONNECTICUT RIVER

Tuesday, April 30, 2013

BEARING BOLT EXPOSED,
PIER #1, BEARING #1, AT
EXTERIOR.



B460 57

Tuesday, April 30, 2013

BEARING BOLT EXPOSED,
PIER #1, BEARING #1, AT
INTERIOR.



B460 58

Tuesday, April 30, 2013

WEARING SURFACE
POTHOLED AT SOUTHEAST.



B460 59

HINSDALE 042/044

NH119 over CONNECTICUT RIVER

Tuesday, April 30, 2013

SEAL HOLED AT SOUTH OF
JOINT # 4.

B460 60



HINSDALE 042/044

NH119 over CONNECTICUT RIVER

Tuesday, June 19, 2012

SPALL AT EAST OF PIER #2.



B434 40

Tuesday, June 19, 2012

GASKET PROTRUDING
SPAN #3, TYPICAL OF A
FEW.



B434 41

Tuesday, June 19, 2012

HEAVY WEAR OF ASPHALT
AT EAST.



B434 42

HINSDALE 042/044

NH119 over CONNECTICUT RIVER

Friday, April 18, 2008

LATERAL BRACING
CONNECTION PLATE
HOLED IN SPAN 2 (TYPICAL
OF SEVERAL)

B332 42



HINSDALE 042/044

NH119 over CONNECTICUT RIVER

Thursday, April 17, 2008

TYPICAL RUST AND SCALE
ON STRINGERS.



B332 38

Thursday, April 17, 2008

LATERAL BRACING
CONNECTION PLATE
HOLED IN SPAN 2 (TYPICAL
OF SEVERAL)



B332 39

Thursday, April 17, 2008

HEAVY PACK RUST WITH
LIGHT SECTION LOSS ON
LOWER CHORD ON
DOWNSTREAM SIDE. (TYPICAL
OF BOTH.



B332 40

HINSDALE 042/044

NH119 over CONNECTICUT RIVER

Thursday, April 17, 2008

BATTEN PLATES RUSTING
AWAY ON LOWER CHORD
DOWNSTREAM. (TYPICAL
OF UPSTREAM.)

B332 41



HINSDALE 042/044

NH119 over CONNECTICUT RIVER

Monday, October 16, 2006

EAST APPROACH (HEIGHT
SIGN MISSING AT NE

B293 06

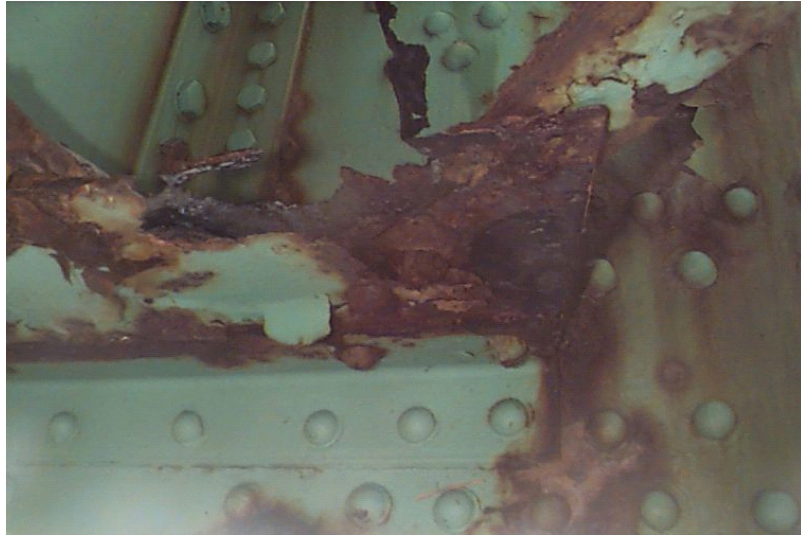


HINSDALE 042/044

NH119 over CONNECTICUT RIVER

Tuesday, November 23, 2004

CONNECTION PLATE AT
SOUTH BOTTOM CHORD
HOLED (TYPICAL OF FEW)



B228 05

HINSDALE 042/044

NH119 over CONNECTICUT RIVER

Wednesday, November 26, 2003

NEW PRECAST CONCRETE
DECK PANELS IN PLACE.



B193 16

Wednesday, November 26, 2003

TYPICAL VIEW OF DRILL
HOLES IN TOP FLANGES,
SEVERAL WITH FLAME
CUTS.



B193 17

Wednesday, November 26, 2003

VIEW OF NEW PRECAST
DECK PANELS IN PLACE.



B193 18

HINSDALE 042/044
NH119 over CONNECTICUT RIVER

Wednesday, October 08, 2003

WEST APPROACH



B189 17

Wednesday, October 08, 2003

WEST APPROACH



B189 18

Wednesday, October 08, 2003

SOUTH ELEVATION



B189 19

HINSDALE 042/044

NH119 over CONNECTICUT RIVER

Wednesday, October 08, 2003

SOUTH ELEVATION



B189 20

HINSDALE 042/044

NH119 over CONNECTICUT RIVER

Tuesday, January 29, 2002

GALVANIZED BRIDGE
DECKING VERY THIN W/
HOLES NEAR BOLTED
ATTACHMENTS



B141 07

Tuesday, January 29, 2002

NEW BOLTS BEING
ATTACHED IN
PREPARATION OF GALV.
BRIDGE PLANK PATCH.



B141 08

Tuesday, January 29, 2002

BRIDGE PLANK THIN AND
HOLED IN WHEEL PATH
BETWEEN STRINGERS AND
BOLTED ATTACHMENTS.



B141 09

HINSDALE 042/044

NH119 over CONNECTICUT RIVER

Tuesday, January 29, 2002

AREA AT WEST END OF BRIDGE BEING REPAIRED WITH SIMILAR THIN BRIDGE PLANK.



B141 10

Tuesday, January 29, 2002

HOLES IN BRIDGE PLANK AT WEST REPAIR NEAR BOLTED ATTACHMENTS.



B141 11

Tuesday, January 29, 2002

COLD PATCH BEING ADDED TO DECK PATCH AT REPAIR #1.



B141 13

HINSDALE 042/044
NH119 over CONNECTICUT RIVER

Tuesday, January 29, 2002

LOGGING TRUCK
ENTERING BRIDGE AT EAST.



B141 14

Tuesday, January 29, 2002

COLD PATCH COMPACTED
AT PATCH REPAIR #1.



B141 15

HINSDALE 042/044

NH119 over CONNECTICUT RIVER

Monday, November 26, 2001

REPAIRED AREA CRACKED
AND MOVING UNDER LOAD
AT EAST.



B138 39

HINSDALE 042/044
NH119 over CONNECTICUT RIVER

Tuesday, April 13, 1999

EAST APPROACH.



B032 01

Tuesday, April 13, 1999

SOUTH ELEVATION.



B032 02

Tuesday, April 13, 1999

DEPRESSED AND PATCHED
AREA IN WEARING
SURFACE AT SOUTHEAST
WITH BRIDGE PLANK
LOOSE UNDERNEATH.



B032 03

HINSDALE 042/044

NH119 over CONNECTICUT RIVER

Tuesday, April 13, 1999

SCARIFIED HOLE THROUGH
BRIDGE PLANK IN SPAN #2,
BAY #2 FROM EAST.



B032 04

Tuesday, April 13, 1999

SCARIFIED HOLE THROUGH
BRIDGE PLANK IN SPAN #2,
BAY #2 FROM EAST.



B032 05

Tuesday, April 13, 1999

BRIDGE PLANK LEAKING IN
SPAN #2, BAY #2 FROM
EAST.



B032 06