

HINSDALE 041/040
NH119 over CONNECTICUT RIVER

Tuesday, November 01, 2016

TOP OF SIDEWALK
BRACKET BROKEN



B571 04

Tuesday, November 01, 2016

SIDE VIEW OF SIDEWALK
BRACKET



B571 05

HINSDALE 041/040
NH119 over CONNECTICUT RIVER

Tuesday, June 21, 2016

RUST AT FLOOR BEAM
EXTERIOR



B561 27

Tuesday, June 21, 2016

RUST AT FLOOR BEAM
EXTERIOR



B561 28

Tuesday, June 21, 2016

HOLE IN BRACING



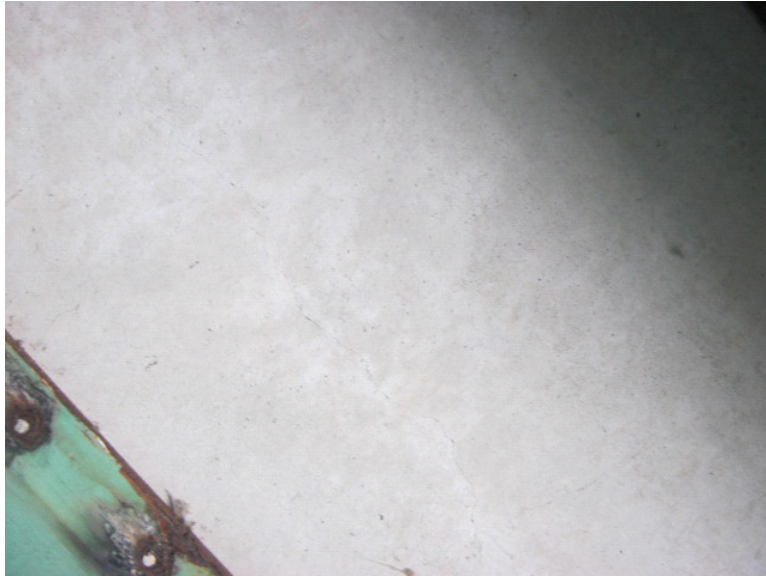
B561 29

HINSDALE 041/040
NH119 over CONNECTICUT RIVER

Tuesday, June 21, 2016

FINE CRACKS IN SOFFIT

B561 30



Tuesday, June 21, 2016

HOLE IN CONNECTION
PLATE

B561 31



Tuesday, June 21, 2016

RACCOON ON FLOORBEAM
FLANGE

B561 32



HINSDALE 041/040

NH119 over CONNECTICUT RIVER

Tuesday, June 21, 2016

BEARING AT NORTHWEST



B561 33

Tuesday, June 21, 2016

BEARING AT SOUTHWEST



B561 34

HINSDALE 041/040
NH119 over CONNECTICUT RIVER

Thursday, August 14, 2014

CROSS BRACE REPAIR,
SECOND BAY FROM EAST.

B506 01



Thursday, August 14, 2014

CROSS BRACE
CONNECTION PLATE
HOLED, TYPICAL OF
SEVERAL.

B506 02



Thursday, August 14, 2014

BOTTOM FLANGE OF
EXTERIOR STRINGER, 1/4"
REMAINING.

B506 03



HINSDALE 041/040
NH119 over CONNECTICUT RIVER

Thursday, August 14, 2014

WEB HOLED UNDER
SIDEWALK STRINGER # 1,
MIDSPAN.

B506 04



Thursday, August 14, 2014

PACK RUST BETWEEN
LOWER CHORD ANGLES.

B506 05



Thursday, August 14, 2014

CROSS BRACING ANGLE
HOLED, TYPICAL OF FEW.

B506 06



HINSDALE 041/040
NH119 over CONNECTICUT RIVER

Thursday, August 14, 2014

FINE CRACKS IN SOFFIT.

B506 07



Thursday, August 14, 2014

CONNECTOR PLATE
REPAIR, FLOORBEAM # 3 AT
NORTH.

B506 08



Thursday, August 14, 2014

VERTICAL CRACKS, RUST
STAINS, WEST ABUTMENT.

B506 09



HINSDALE 041/040
NH119 over CONNECTICUT RIVER

Thursday, August 14, 2014

RUST AND SCALE AT
SOUTHWEST BEARING.



B506 10

Thursday, August 14, 2014

JOINT SEAL HOLED AT
WEST.



B506 11

Thursday, August 14, 2014

BEARING AT NORTHEAST



B506 12

HINSDALE 041/040
NH119 over CONNECTICUT RIVER

Wednesday, June 25, 2014

PLATED REPAIR AT
NORTHEAST BEARING



X009 13

Wednesday, June 25, 2014

ROLLERS MOVING OUT OF
POSITION AT NORTHEAST
BEARING



X009 14

Wednesday, June 25, 2014

ROLLERS MOVING OUT OF
POSITION AT NORTHEAST
BEARING



X009 15

HINSDALE 041/040
NH119 over CONNECTICUT RIVER

Monday, March 25, 2013

INTERIOR VIEW OF
NORTHEAST ROLLER
BEARING.



B456 01

Monday, March 25, 2013

PLATE HOLED AT
NORTHEAST ROLLER
BEARING.



B456 02

Monday, March 25, 2013

NORTHEAST ROLLER
BEARING PLATE RUSTED
WITH SECTION LOSS.



B456 03

HINSDALE 041/040
NH119 over CONNECTICUT RIVER

Monday, March 25, 2013

NORTHEAST ROLLER
BEARING PLATE RUSTED
WITH SECTION LOSS.

B456 04



Monday, March 25, 2013

PLATE HOLED AT
NORTHEAST ROLLER
BEARING.

B456 05



Monday, March 25, 2013

EXTERIOR SIDE OF
NORTHEAST ROLLER
BEARING PLATE RUSTED
WITH SECTION LOSS.

B456 06

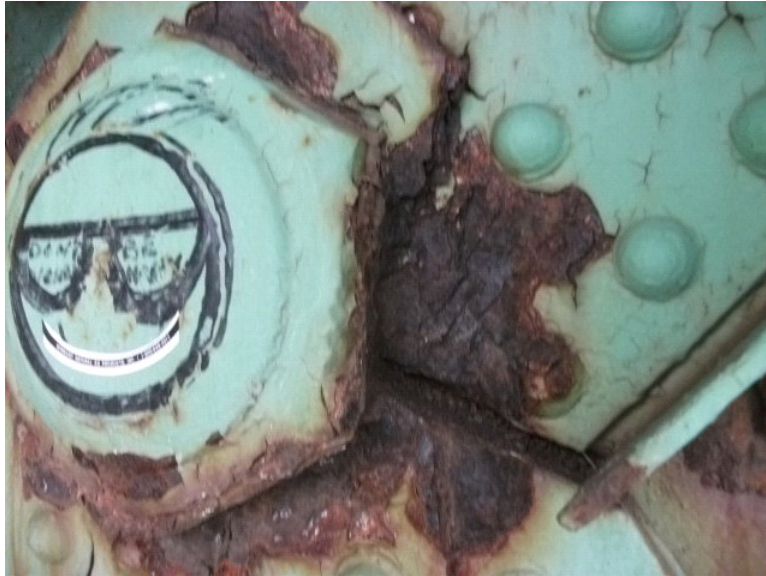


HINSDALE 041/040

NH119 over CONNECTICUT RIVER

Monday, March 25, 2013

EXTERIOR SIDE OF
NORTHEAST ROLLER
BEARING PLATE RUSTED
WITH SECTION LOSS.



B456 07

Monday, March 25, 2013

LOWER LATERAL BRACING
CONNECTION BROKEN AT
EAST.



B456 08

Monday, March 25, 2013

LOWER LATERAL BRACING
CONNECTION PLATE
HOLED AT EAST.



B456 09

HINSDALE 041/040

NH119 over CONNECTICUT RIVER

Monday, March 25, 2013

LOWER LATERAL BRACING
CONNECTION PLATE
HOLED AT EAST.



B456 10

Monday, March 25, 2013

MINOR RUST ON
STRINGERS AND FLOOR
BEAMS.



B456 11

Monday, March 25, 2013

HOLES IN LOWER LATERAL
BRACE AT MIDSPAN.



B456 12

HINSDALE 041/040
NH119 over CONNECTICUT RIVER

Monday, March 25, 2013

PACK RUST IN MIDDLE OF
LOWER CHORD AT NORTH.

B456 13



Monday, March 25, 2013

LOWER LATERAL BRACING
CONNECTION PLATE
HOLED AT BAY 2 AT WEST.

B456 14



Monday, March 25, 2013

LOWER LATERAL BRACING
CONNECTION PLATE
HOLED AT BAY 2 AT WEST.

B456 15



HINSDALE 041/040

NH119 over CONNECTICUT RIVER

Monday, March 25, 2013

LOWER LATERAL BRACING
CONNECTION PLATE AT
BAY 2 AT WEST.



B456 16

Monday, March 25, 2013

SOUTHWEST ROLLER
BEARING PLATE RUSTED
WITH SECTION LOSS.



B456 17

Monday, March 25, 2013

NORTHWEST ROLLER
BEARING.



B456 18

HINSDALE 041/040

NH119 over CONNECTICUT RIVER

Monday, March 25, 2013

MODERATE RUST AT
GUSSET PLATE NEAR
NORTHWEST ROLLER
BEARING.



B456 19

Monday, March 25, 2013

HEAVY TRAFFIC DAMAGE
TO SOUTHWEST RAIL.



B456 20

HINSDALE 041/040
NH119 over CONNECTICUT RIVER

Tuesday, June 19, 2012

BOTTOM SIDEWALK RAIL
BROKEN AT MIDSPAN.



B434 37

Tuesday, June 19, 2012

SOUTHWEST RAIL HEAVILY
DAMAGED. TYPICAL OF NE
AND SE.)



B434 38

Tuesday, June 19, 2012

PLATE HOLED AT
NORTHEAST ROLLER
BEARING.



B434 39

HINSDALE 041/040
NH119 over CONNECTICUT RIVER

Friday, September 09, 2011

SECOND SWAY BRACE
FROM EAST BROKEN



B409 26

Friday, September 09, 2011

NORTHEAST BEARING
RUSTED



B409 27

HINSDALE 041/040
NH119 over CONNECTICUT RIVER

Monday, April 14, 2008

LATERAL BRACING
CONNECTION PLATE
HOLED, WEST SIDE OF
FLOORBEAM TWO

B332 35



Monday, April 14, 2008

BRIDGE SEAT SPALLED AT
STRINGER ONE
SOUTHWEST, ANCHOR
BOLT EXPOSED.

B332 36



Monday, April 14, 2008

PROTECTIVE WEARING
SURFACE COATING
PEELING AWAY.

B332 37



HINSDALE 041/040
NH119 over CONNECTICUT RIVER

Wednesday, April 09, 2008

CONNECTION PLATE AT
NORTHEAST BEARING
HOLED



B332 31

Wednesday, April 09, 2008

CONNECTION PLATE AT
NORTHEAST BEARING
HOLED



B332 32

Wednesday, April 09, 2008

NORTHEAST ROLLER
BEARING, SIDE PLATE
TIPPED



B332 33

HINSDALE 041/040

NH119 over CONNECTICUT RIVER

Wednesday, April 09, 2008

LATERAL BRACING
CONNECTION PLATE
HOLED, WEST SIDE OF
THIRD FLOORBEAM FROM
EAST.



B332 34

HINSDALE 041/040

NH119 over CONNECTICUT RIVER

Monday, October 16, 2006

PIPE RAIL LOOSE AT
NORTHWEST SIDEWALK

B293 05



HINSDALE 041/040

NH119 over CONNECTICUT RIVER

Tuesday, November 23, 2004

UNDERSIDE VIEW OF NEW
SLABS AND TOP FLANGE
OF STRINGER WITH HOLES
AND FLAME CUTS

B228 04



HINSDALE 041/040
NH119 over CONNECTICUT RIVER

Wednesday, October 08, 2003

WEST APPROACH

B189 11



Wednesday, October 08, 2003

WEST APPROACH

B189 12



Wednesday, October 08, 2003

SOUTHEAST ELEVATION

B189 13



HINSDALE 041/040
NH119 over CONNECTICUT RIVER

Wednesday, October 08, 2003

SOUTH ELEVATION



B189 14

Wednesday, October 08, 2003

SOUTH ELEVATION



B189 15

Wednesday, October 08, 2003

PRE-CAST DECK PANELS
READY FOR INSTALLATION.



B189 16

HINSDALE 041/040
NH119 over CONNECTICUT RIVER

Monday, April 22, 2002

ASPHALT CRACKED AND
LOOSE OVER SECTION OF
DETERIORATED BRIDGE
PLANK.



B146 20

Monday, April 22, 2002

BRIDGE PLANK TORN AND
HOLED AT WEST END.



B146 21

Monday, April 22, 2002

ASPHALT SETTLED AND
HUMPED UP 3 INCHES, 20
FEET FROM WEST END.

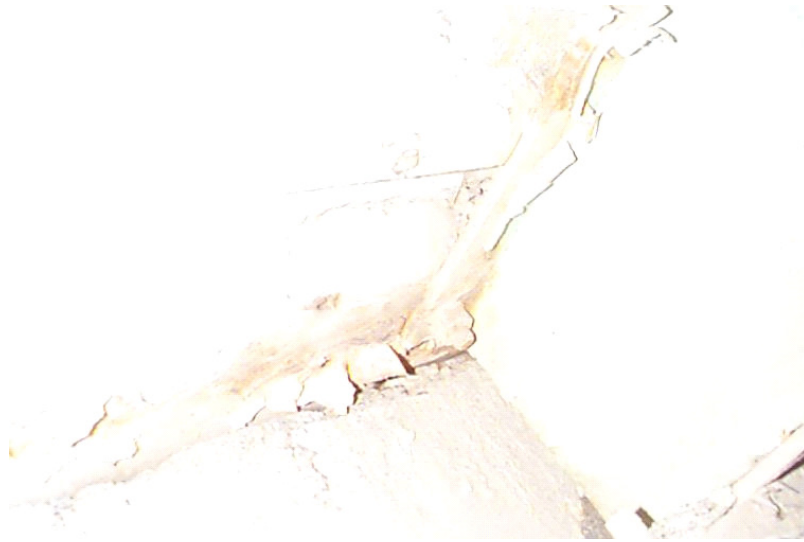


B146 22

HINSDALE 041/040
NH119 over CONNECTICUT RIVER

Monday, April 22, 2002

BRIDGE PLANK TORN AND
HOLED AT WEST END,
UNDERSIDE VIEW.



B146 23

Monday, April 22, 2002

BOLTS MISSING AT BRIDGE
PLANK CONNECTION TO
UPPER FLANGE AT EAST
END.



B146 24

Monday, April 22, 2002

AREA TOPSIDE OF
PREVIOUS PICTURE B146-
24.



B146 25

HINSDALE 041/040

NH119 over CONNECTICUT RIVER

Tuesday, January 29, 2002

CRACKED, DEPRESSED,
LOOSE AREA IN DECKING
(TYP OF SEVERAL AREAS
THROUGHOUT BRIDGE)



B141 12

HINSDALE 041/040

NH119 over CONNECTICUT RIVER

Tuesday, November 27, 2001

CRACKED, DEPRESSED
AREA IN ASPHALT TOPSIDE
(TYP OF MANY AREAS)



B138 41

HINSDALE 041/040
NH119 over CONNECTICUT RIVER

Monday, April 19, 1999

WEST APPROACH.



B032 07

Monday, April 19, 1999

SOUTH ELEVATION.



B032 08

Monday, April 19, 1999

DECK CRACKED AND
DEPRESSED AT
SOUTHWEST END.



B032 09

HINSDALE 041/040

NH119 over CONNECTICUT RIVER

Monday, April 19, 1999

DECK CRACKED AND
DEPRESSED AT
FLOORBEAM # 3, AT SOUTH.



B032 10

Monday, April 19, 1999

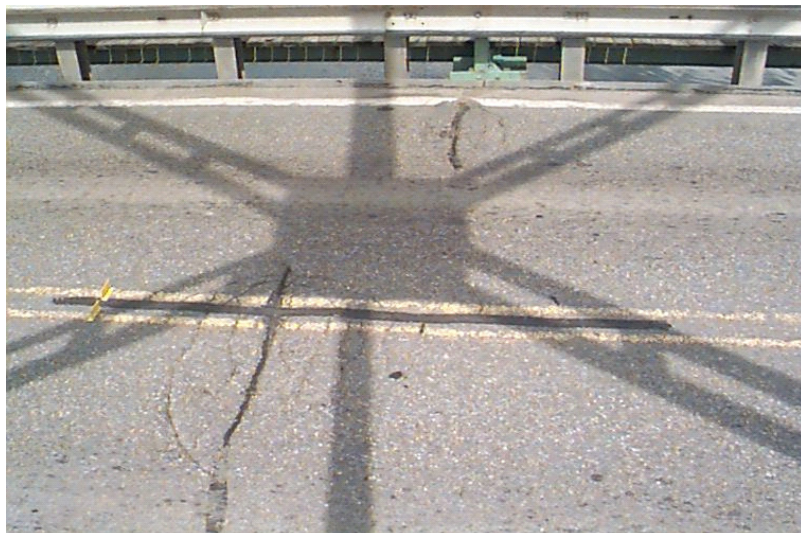
DECK CRACKED AT PATCH
OVER FLOORBEAM # 6, AT
NORTH.



B032 11

Monday, April 19, 1999

DECK CRACKED,
DEPRESSED IN BAY # 6.



B032 12

HINSDALE 041/040
NH119 over CONNECTICUT RIVER

Monday, April 19, 1999

DECK CRACKED,
DEPRESSED AT
FLOORBEAM # 8.



B032 13

Monday, April 19, 1999

DECK CRACKED,
DEPRESSED AT BAY # 8.



B032 14

Monday, April 19, 1999

DECK CRACKED,
DEPRESSED AT
FLOORBEAM # 10,NORTH.



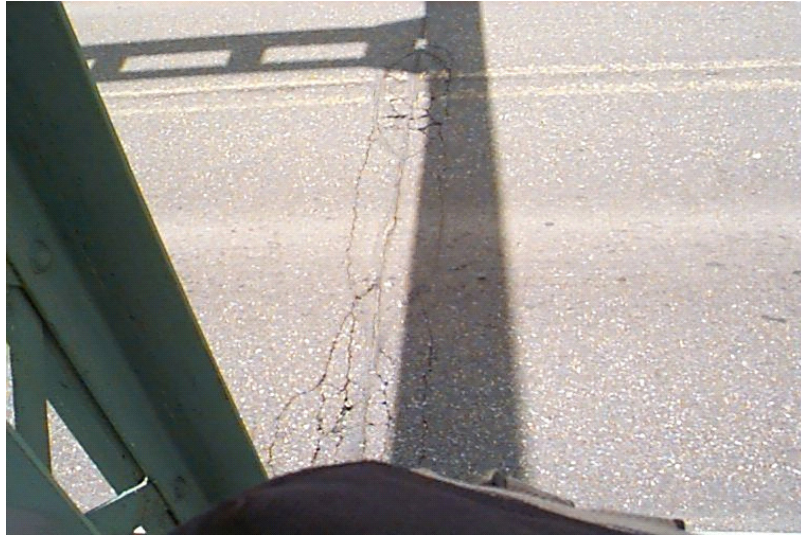
B032 15

HINSDALE 041/040
NH119 over CONNECTICUT RIVER

Monday, April 19, 1999

DECK CRACKED,
DEPRESSED AT
FLOORBEAM # 12.

B032 16



Monday, April 19, 1999

DECK CRACKED,
DEPRESSED AT
FLOORBEAM # 14,NORTH.

B032 17



Monday, April 19, 1999

DECK CRACKED,
DEPRESSED, AND
PATCHED AT EAST END.

B032 18



HINSDALE 041/040
NH119 over CONNECTICUT RIVER

Monday, April 19, 1999

BRIDGE PLANK HOLED
THROUGH OVER
FLOORBEAM #2, BAY 2.



B032 19

Monday, April 19, 1999

BRIDGE PLANK LEAKING AT
FLOORBEAM #5, BAY 5.



B032 20

Monday, April 19, 1999

RUST AND LEAKING BAY #6.



B032 21

HINSDALE 041/040
NH119 over CONNECTICUT RIVER

Monday, April 19, 1999

TOP FLANGE OF STRINGER
#5, WITH SECTION LOSS, IN
BAY # 6.

B032 22



Monday, April 19, 1999

TOP FLANGE OF STRINGER
#4, WITH SECTION LOSS, IN
BAY # 6.

B032 23



Monday, April 19, 1999

BRIDGE PLANK LEAKING IN
BAY #8.

B032 24



HINSDALE 041/040
NH119 over CONNECTICUT RIVER

Monday, April 19, 1999

BRIDGE PLANK LEAKING IN
BAY #9.

B032 25



Monday, April 19, 1999

BRIDGE PLANK LEAKING IN
BAY #10, FLOORBEAM # 9.

B032 26



Monday, April 19, 1999

BRIDGE PLANK LEAKING IN
BAY #11.

B032 27



HINSDALE 041/040
NH119 over CONNECTICUT RIVER

Monday, April 19, 1999

BRIDGE PLANK LOOSE IN
BAY #11.

B032 28



Monday, April 19, 1999

STRINGER #7 CUT, NEAR
FLOORBEAM #11.

B032 29



Monday, April 19, 1999

STRINGER #4 AT EAST END
BAY.

B032 30



HINSDALE 041/040

NH119 over CONNECTICUT RIVER

Tuesday, November 03, 1998

DETERIORATED AREA
OVER FB#6 @N. W/ FLEX
CRACKS & HOLES
THROUGH BRIDGE PLANK.



B018 04

Tuesday, November 03, 1998

HOLES THROUGH BRIDGE
PLANK @ N . OVER FB#6.



B018 05

Tuesday, November 03, 1998

FLEX CRACKED AREA OF
BRIDGE PLANK @ N . OVER
FB#6.



B018 06

HINSDALE 041/040

NH119 over CONNECTICUT RIVER

Tuesday, November 03, 1998

ASPHALT CRACKED &
DEPRESSED OVER FB#5 @
SOUTH & BRIDGE PLANK
MOVING WITH LOADINGS.



B018 07

Tuesday, November 03, 1998

FLEX CRACKED AREA OF
BRIDGE PLANK @ N . OVER
FB#6.



B018 08

Tuesday, November 03, 1998

ASPHALT CRACKED OVER
FB#7 @ NORTH.



B018 09

HINSDALE 041/040

NH119 over CONNECTICUT RIVER

Tuesday, November 03, 1998

ASPHALT CRACKED OVER
FB#7 @ SOUTH.



B018 10

Tuesday, November 03, 1998

DETERIORATED AREA
OVER FB#10 @
CENTERLINE.



B018 11

Tuesday, November 03, 1998

LOOSE BOLTS CUT OUT @
SOUTH OVER FB#4.



B018 12

HINSDALE 041/040

NH119 over CONNECTICUT RIVER

Tuesday, November 03, 1998

APPEARS TO BE CRACKED
WELD @ DIAPHRAGM,
BAY#6, BETWEEN
STRINGER #4 & #5 @
MIDSPAN. WAS NOT
CRACKED WHEN PAINT
WAS REMOVED.



B018 13

Tuesday, November 03, 1998

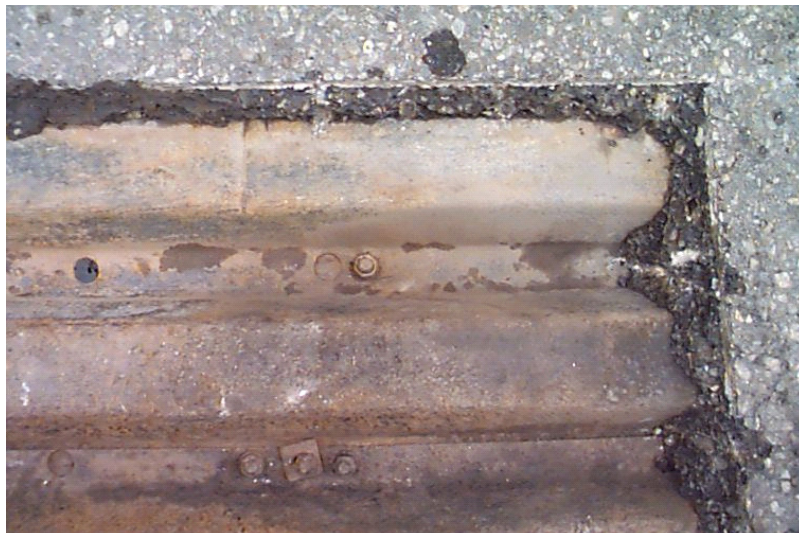
DECK LEAKAGE, BAY#6.



B018 14

Tuesday, November 03, 1998

RUNNING CRACK IN BRIDGE
PLANK @ FB#7 @ SOUTH.



B018 15

HINSDALE 041/040
NH119 over CONNECTICUT RIVER

Tuesday, November 03, 1998

BAY#8, CENTER SPAN



B018 16

Tuesday, November 03, 1998

BAY#1, @ SOUTH W/ DENTS
IN BRIDGE PLANK.



B018 17

Tuesday, November 03, 1998

BAY#1, BRIDGE PLANK.



B018 18

HINSDALE 041/040
NH119 over CONNECTICUT RIVER

Tuesday, November 03, 1998

BAY#2.



B018 19

Tuesday, November 03, 1998

SOUTH WEST END OF DECK
@ VT. HAS ONE INCH OF
SETTLEMENT.



B018 20

Tuesday, November 03, 1998

NH END HAS SCARIFIED
BRIDGE PLANK.

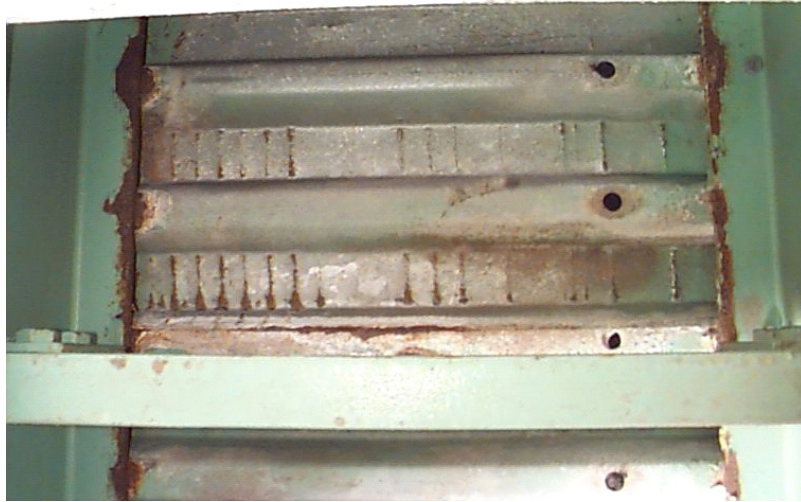


B018 21

HINSDALE 041/040
NH119 over CONNECTICUT RIVER

Tuesday, November 03, 1998

NH END HAS SCARIFIED
BRIDGE PLANK.



B018 22

Tuesday, November 03, 1998

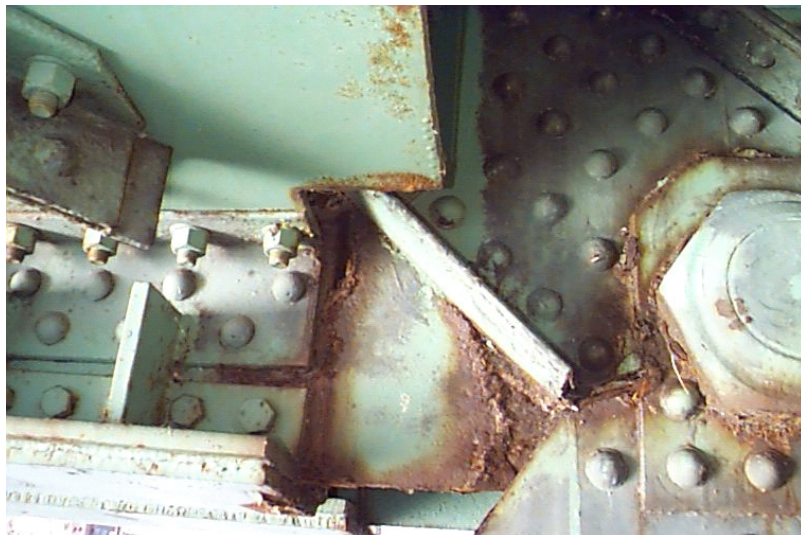
NH END HAS BRIDGE PLANK
LEAKAGE.



B018 23

Tuesday, November 03, 1998

NH END HAS A HOLE @
NORTH BEARING.



B018 24

HINSDALE 041/040
NH119 over CONNECTICUT RIVER

Tuesday, November 03, 1998

NH END HAS A HOLE @
NORTH BEARING.



B018 25

Tuesday, November 03, 1998

NORTH EAST APPROACH
RAIL DAMAGE.



B018 26

Tuesday, November 03, 1998

SOUTH WEST APPROACH
RAIL DAMAGE @ VT. END.



B018 27

HINSDALE 041/040

NH119 over CONNECTICUT RIVER

Tuesday, November 03, 1998

SOUTH WEST BEARING
@ STRINGER#1,HAS
SPALLED AREA BENEATH
IT.



B018 28