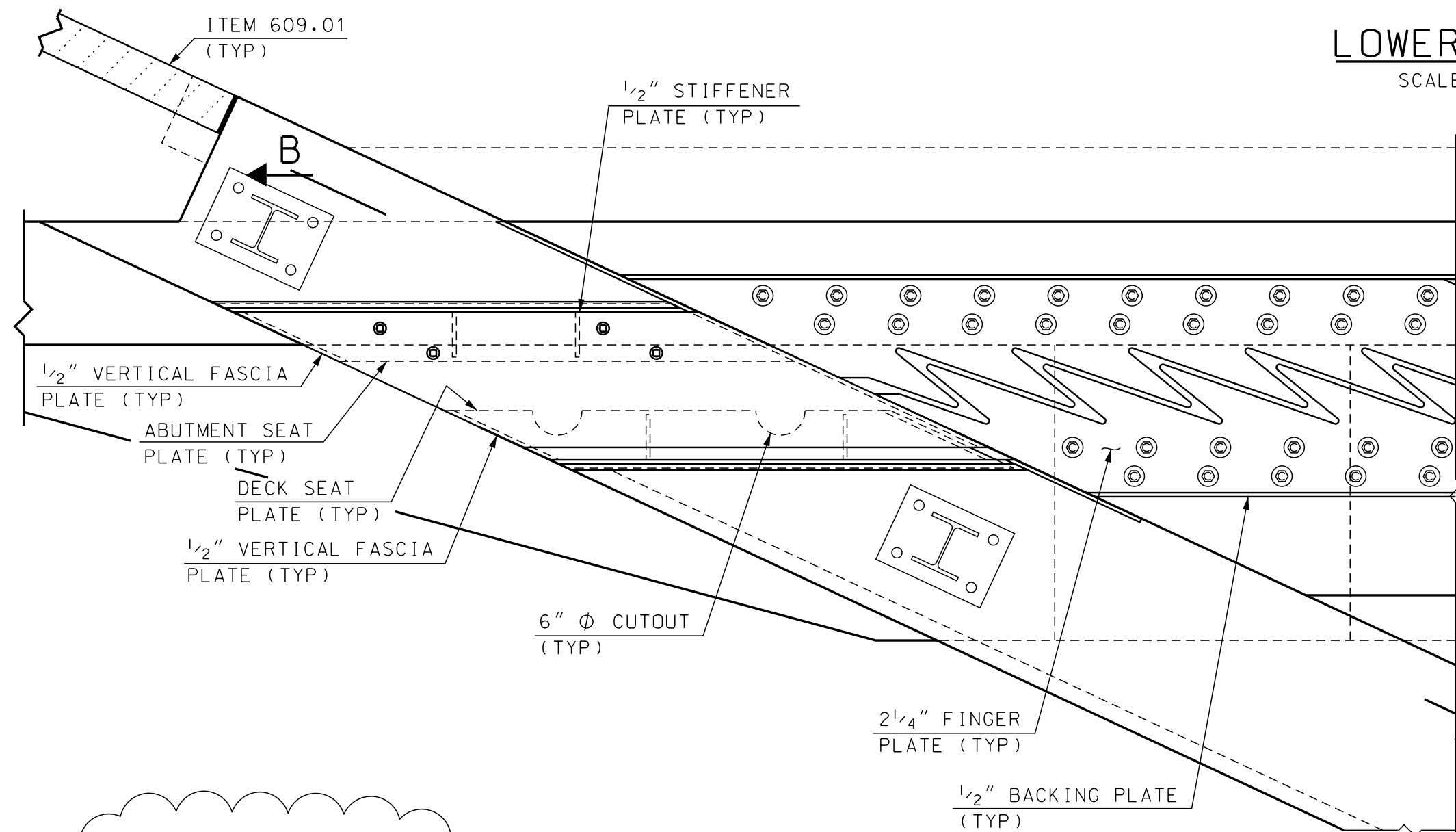


LOWER ASSEMBLY

SCALE: 3/4" = 1'-0"



UPPER ASSEMBLY

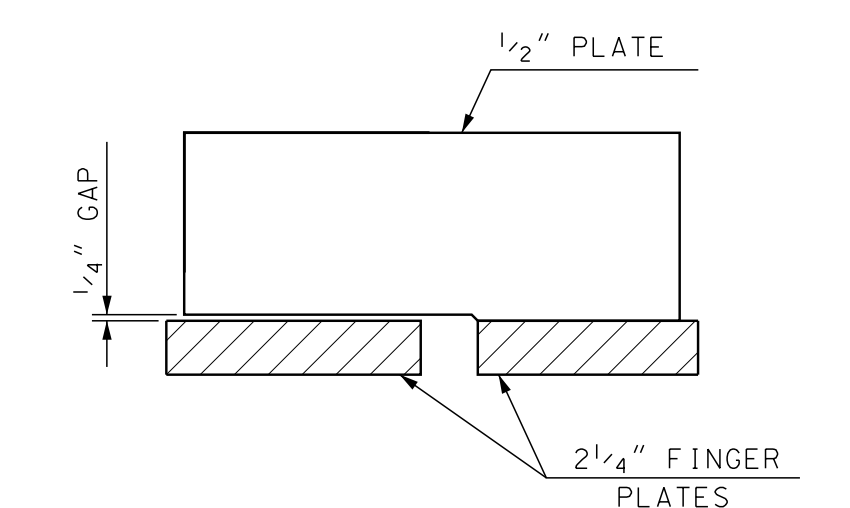
SCALE: 3/4" = 1'-0"

EXPANSION JOINT NOTES

- EXPANSION JOINT STEEL SHALL BE AASHTO M223 (ASTM A572) GR 50. MINOR STEEL PLATES MAY CONFORM TO AASHTO M183 (ASTM A36). ALL STEEL SHALL BE GALVANIZED. THE ENTIRE ASSEMBLY SHALL BE PAID AS ITEM 561.3001, PREFABRICATED FINGER EXPANSION JOINT (F).
- BOLTS IN THE CURBS OR SIDEWALKS SHALL BE STAINLESS STEEL COUNTERSUNK HEAD BOLTS WITH SOCKET HEAD AND SHALL CONFORM TO ASTM A276, TYPE 304. BOLTS IN THE ROADWAY SHALL BE GALVANIZED HIGH-STRENGTH BOLTS AND SHALL CONFORM TO ASTM A325. ANCHOR RODS SHALL BE GALVANIZED AND CONFORM TO ASTM A307.
- SPLICES FOR EXPANSION JOINT STEEL SHALL DEVELOP FULL STRENGTH.
- THE EXPANSION JOINT SHALL BE PRESET TO THE TEMPERATURE ANTICIPATED AT THE TIME OF INSTALLATION. FINAL SETTING IN THE FIELD SHALL BE DETERMINED BY THE ENGINEER (SEE TEMPERATURE TABLE ON BRIDGE SHEET 33). THE MAXIMUM ALLOWABLE MOVEMENT SHALL BE 2 1/8 INCHES.
- PROTECT TOP OF EXPANSION JOINT DURING PLACEMENT OF CONCRETE AND BITUMINOUS PAVEMENT.
- JOINT SUPPORT PLATES SHALL BE SHOP WELDED TO THE EXPANSION JOINT STEEL AND SHALL BE VERTICAL AFTER THE JOINT ASSEMBLY HAS BEEN ADJUSTED FOR ROADWAY CROSS-SLOPE AND GRADE.
- FASCIA AND CURB PLATES SHALL BE SHOP WELDED AND SHALL BE VERTICAL AFTER THE JOINT ASSEMBLY HAS BEEN ADJUSTED FOR ROADWAY CROSS-SLOPE AND GRADE.
- IMMEDIATELY AFTER THE JOINT HAS BEEN SECURED TO THE STRUCTURAL STEEL AND BACKWALL, REMOVE SHIPPING DEVICES. WELDING OF SHIPPING DEVICES TO FINGER PLATE SHALL NOT BE ALLOWED.
- THE FINGER PLATES SHALL BE CUT FROM ONE CONTINUOUS 2'-0" WIDE x 2 1/4" THICK PLATE AS SHOWN ON THE FINGER CUTTING DETAIL, AND FURNISHED IN 4 DIFFERENT LENGTHS.
- THE HOPPERS AND DOWNSPOUTS SHALL BE A36 STEEL AND GALVANIZED IN ACCORDANCE WITH SECTION 550. PAYMENT FOR HOPPERS, BLOCKING PADS AND ALL ATTACHMENTS WILL BE SUBSIDIARY TO ITEM 561.3001.
- ELEVATIONS SHOWN AT TOP OF FINGER PLATES ARE 1/8" LOWER THAN THE PROPOSED FINISHED ROADWAY GRADE.
- SEE BRIDGE SHEET 36 FOR HOPPER DETAILS.
- THE FABRIC TROUGH SHALL BE PREFORMED FABRIC MATERIAL AND SHALL BE CUT DURING SHOP PRE-ASSEMBLY. THE TROUGH MAY BE SUPPLIED IN 5 LENGTHS WITH 1'-0" OVERLAP AT C SHOULDERS BREAK. SEE BRIDGE SHEET 35 FOR FABRIC TROUGH SPLICE DETAIL.
- TRIM EXCESS FABRIC BEHIND CURB PLATES.
- RUBBER BLOCKS USED BETWEEN ABUTMENT CONCRETE AND DOWNSPOUTS SHALL BE MOLDED TO A THICKNESS OF 2" AND CUT BY THE FABRICATOR TO LENGTHS AND WIDTHS SPECIFIED IN THE PLANS. RUBBER BLOCKS SHALL BE OZONE, WATER, AND TEMPERATURE RESISTANT, AND BONDED TO THE FACE OF ABUTMENT WITH A COMPATIBLE ADHESIVE IN ACCORDANCE WITH THE MANUFACTURER'S RECOMMENDATIONS.
- THE EXPANSION JOINT ASSEMBLY SHALL BE INSTALLED ONLY AFTER THE APPROACH FILLS HAVE BEEN CONSTRUCTED TO THE BOTTOM OF THE APPROACH SLAB.
- AFTER BOLT INSTALLATION, FILL COUNTERSUNK HOLES WITH ITEM 562.1, SILICONE JOINT SEALANT (F) (APPROX. 1 LF/HOLE).

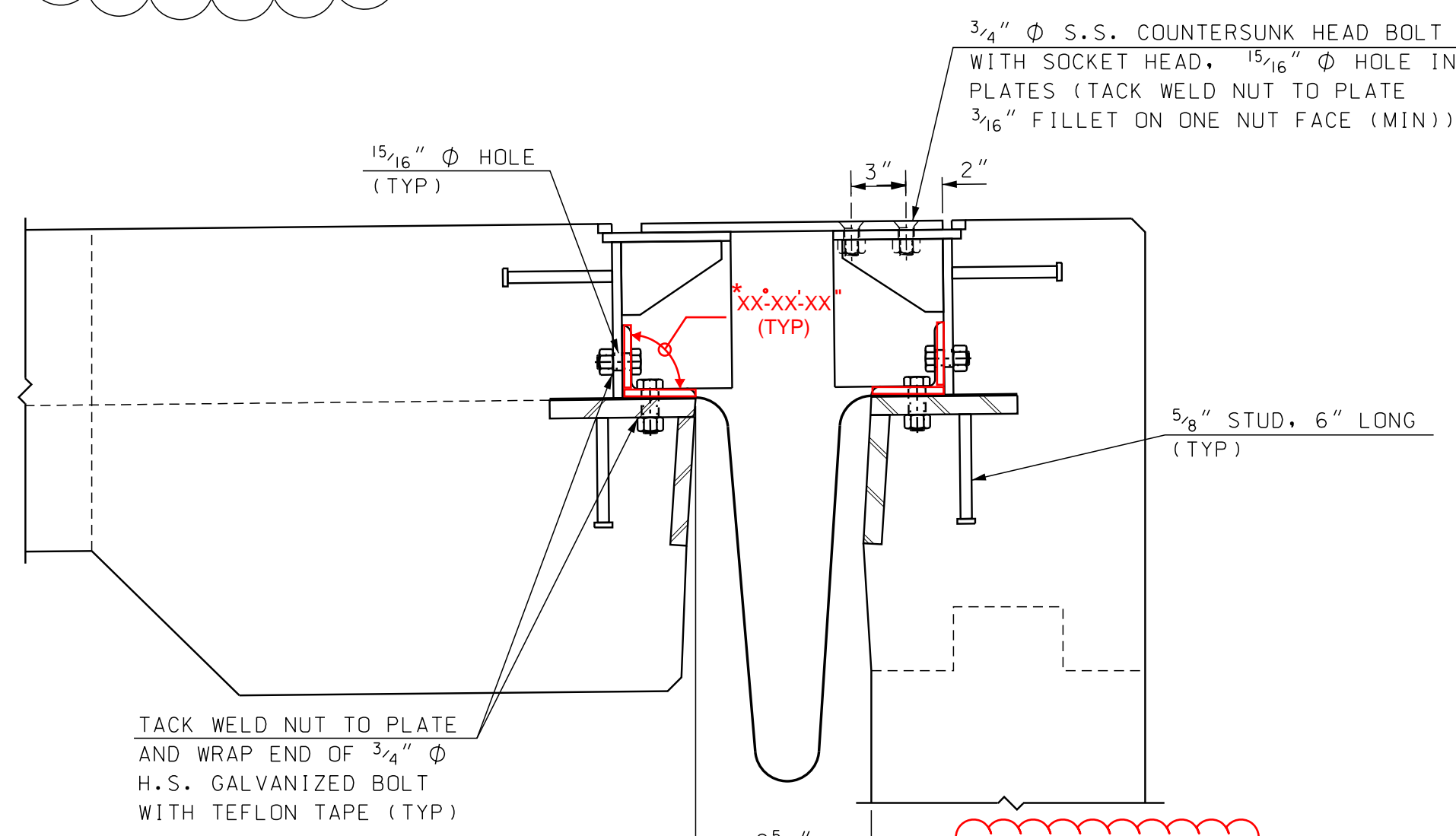
NOTE: DETAILS AND NOTES MAY NOT BE CURRENT. CLOSELY REVIEW BEFORE USING DETAILS.

SAMPLE PLAN
DATE: 08-2017



OUTSIDE VERTICAL CURB PLATE DETAIL

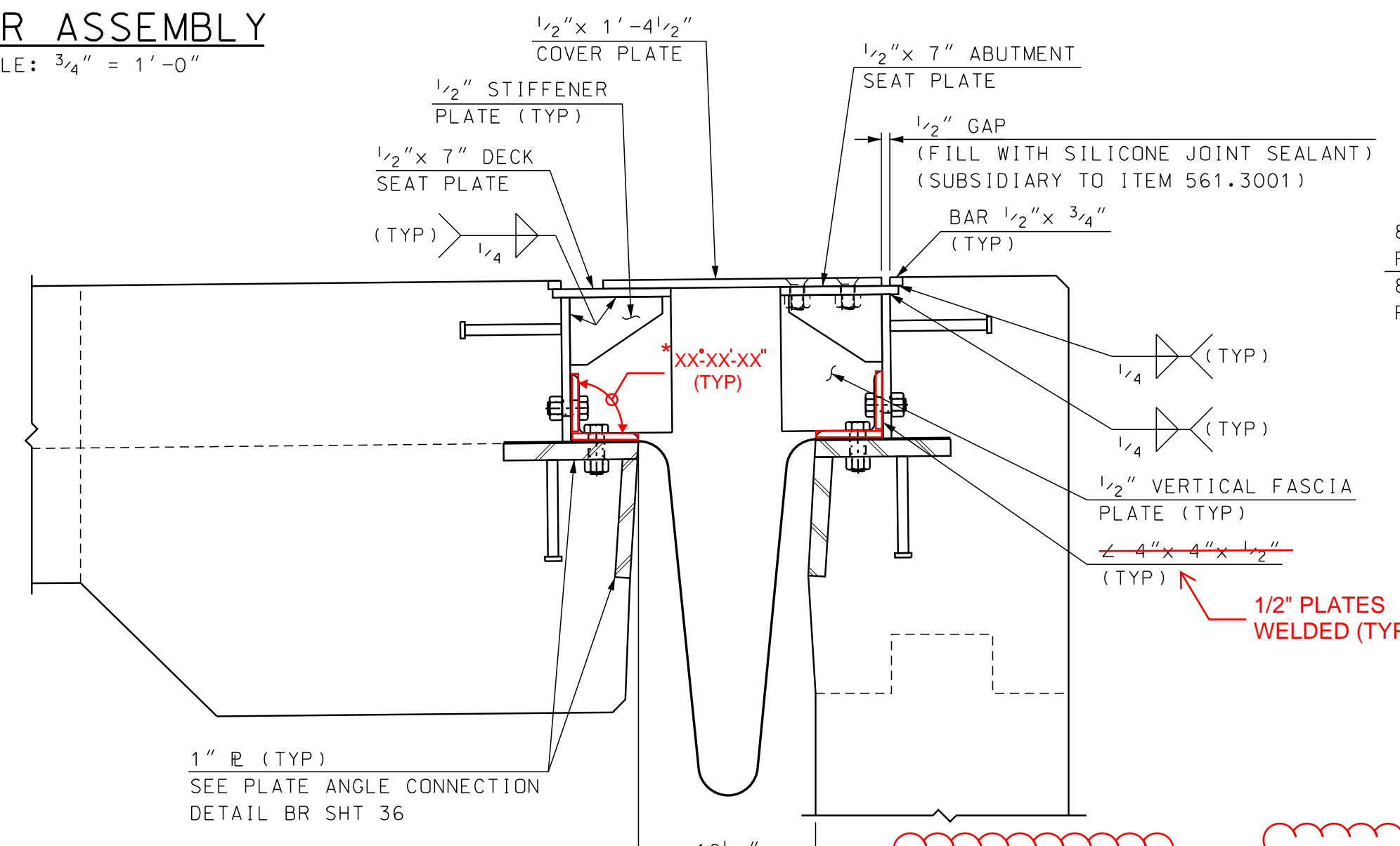
SCALE: 1 1/2" = 1'-0"



SECTION B-B

SCALE: 1 1/2" = 1'-0"
(MIN. OPENING)

*** DESIGNER TO CALCULATE ANGLE**

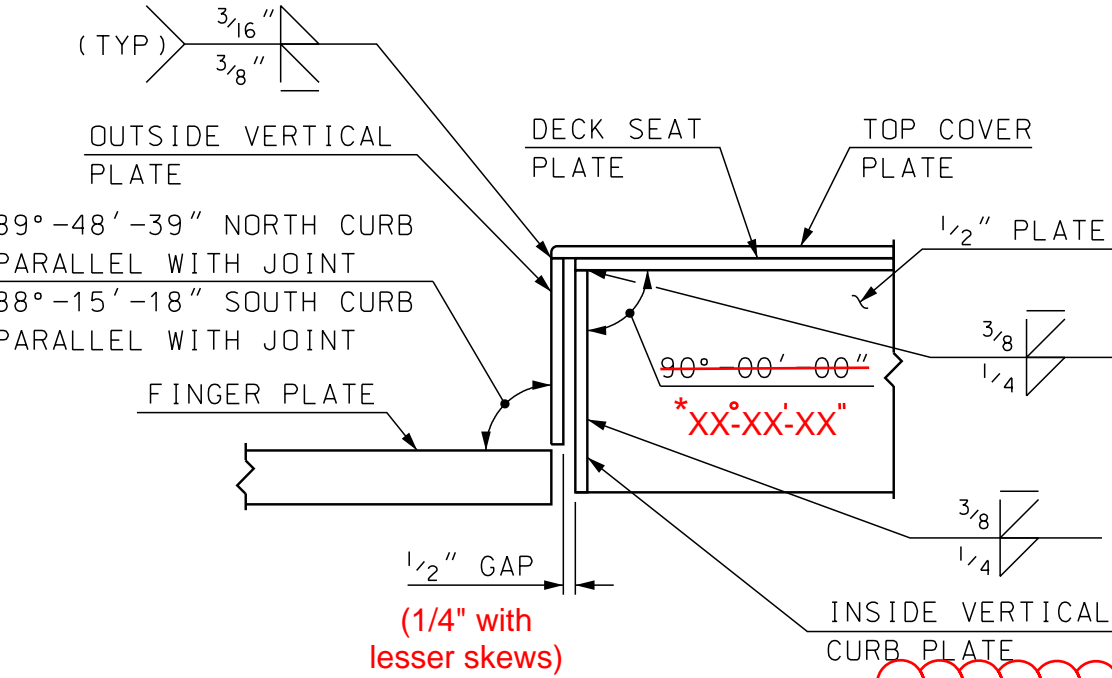


SECTION B-B

SCALE: 1 1/2" = 1'-0"
(MAX. OPENING)

*** DESIGNER TO CALCULATE ANGLE**

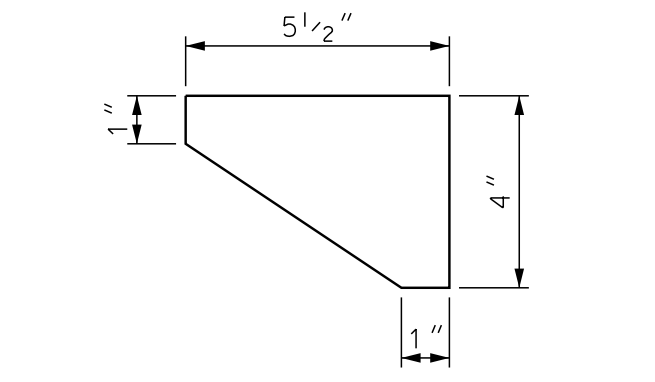
REVISIONS 5/9/2019



SECTION C-C

SCALE: 1 1/2" = 1'-0"

*** DESIGNER TO CALCULATE ANGLE PARALLEL WITH JOINT**

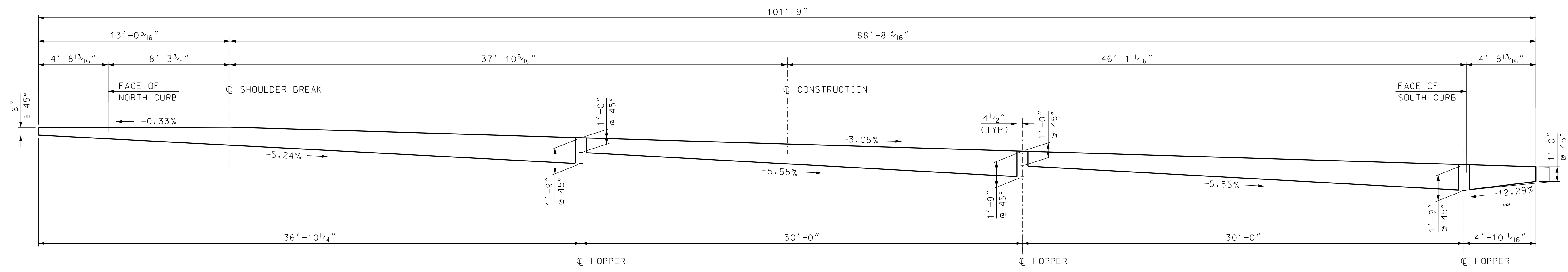


STIFFENER PLATE

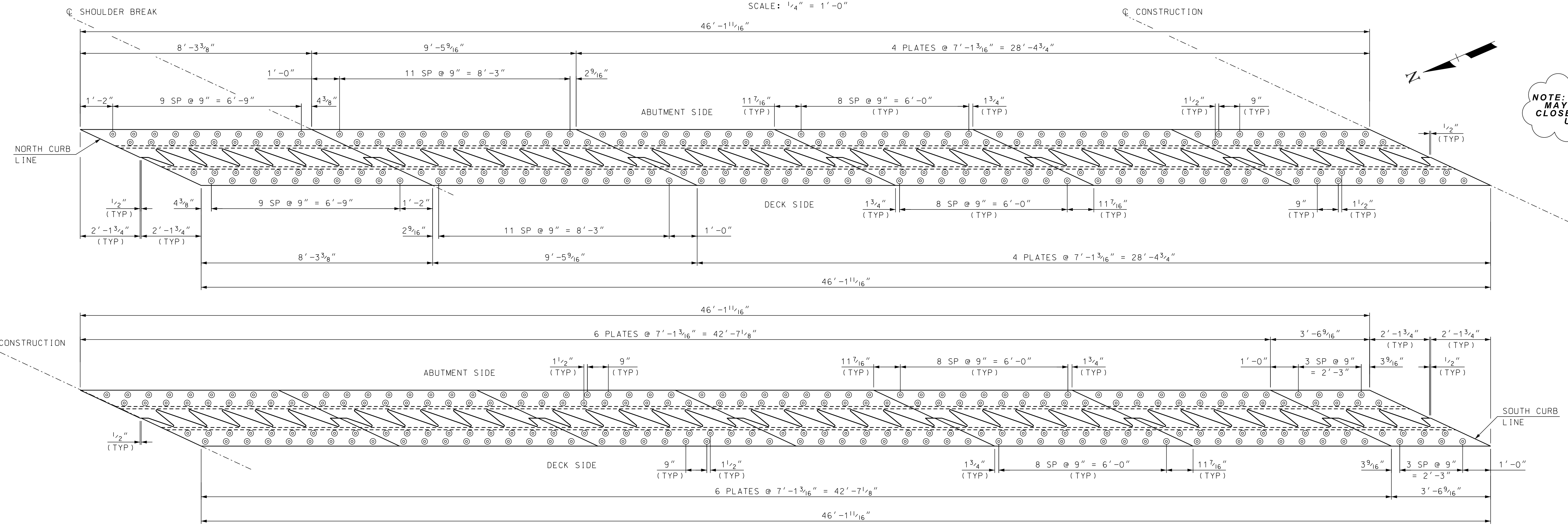
SCALE: 3" = 1'-0"

STATE OF NEW HAMPSHIRE									
DEPARTMENT OF TRANSPORTATION * BUREAU OF BRIDGE DESIGN									
TOWN	SULLIVAN	BRIDGE NO.	XXXXXX	STATE PROJECT	XX				
LOCATION	XX								
FINGER PLATE EXPANSION JOINT (2 OF 4)									
REVISIONS AFTER PROPOSAL		BY	DATE	CHECKED	BY	DATE	BRIDGE SHEET		
		SMG	8/16	CHECKED	KFD	8/17	34 OF XX		
		SMG	8/16	CHECKED	KFD	8/17	FILE NUMBER		
		KFD	8/17	CHECKED	ABH	8/17	XX-X-X		
ISSUE DATE		FEDERAL PROJECT NO.				SHEET NO.	TOTAL SHEETS		
REV. DATE		-----				1	1		

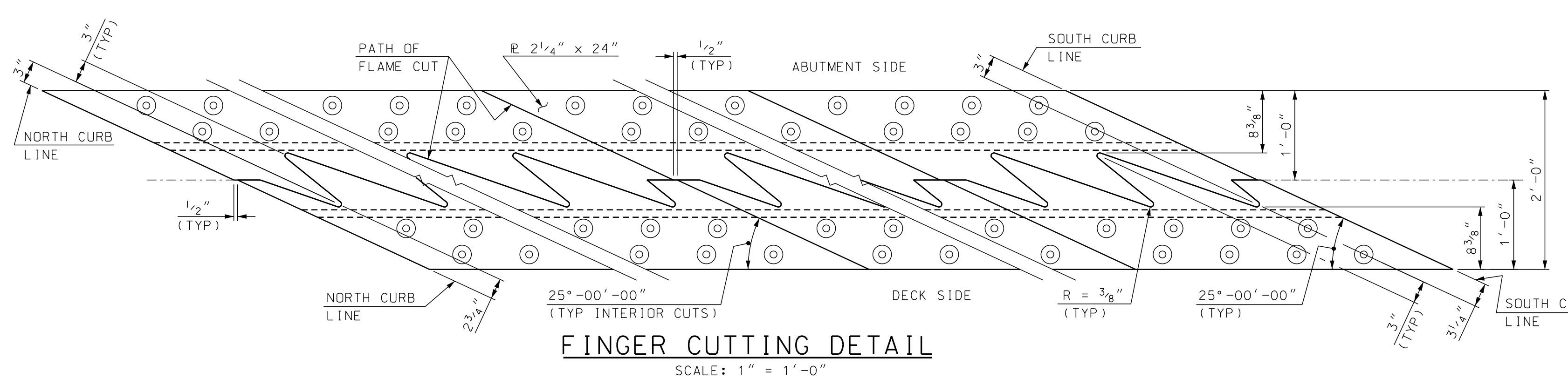
SUBDIRECTORY	DGN LOCATOR	SHEET SCALE
BRC/SUPER	10439 FingerJt	AS NOTED



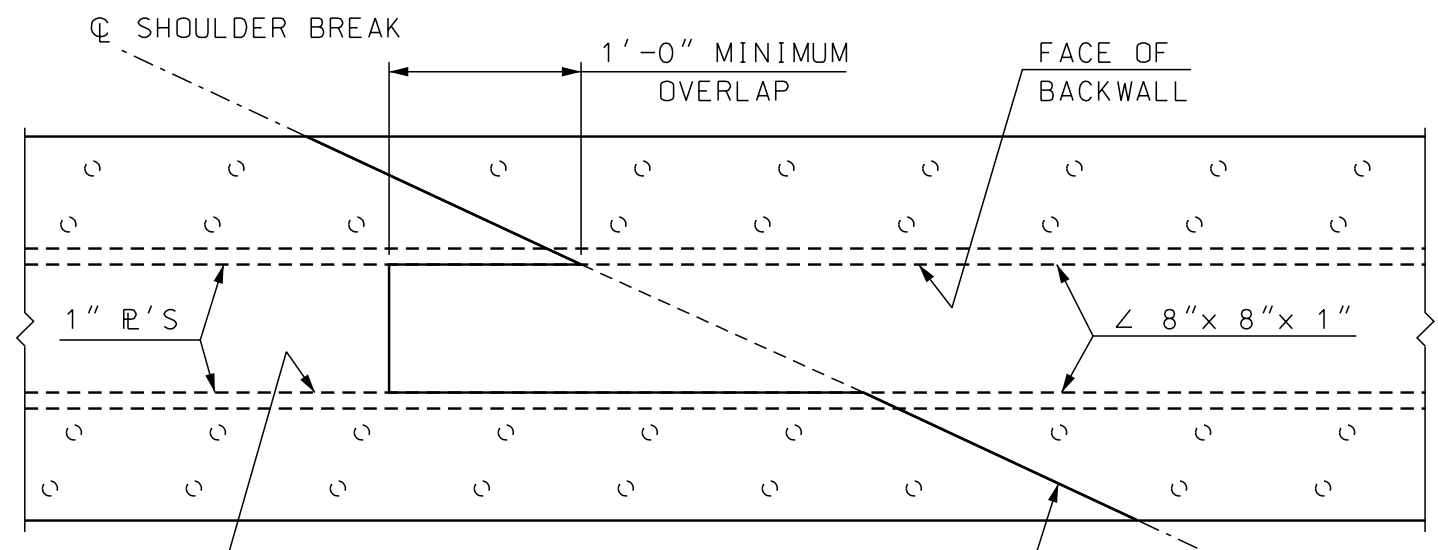
FABRIC DRAIN TROUGH PROFILE
SCALE: 1/4" = 1'-0"



FINGER PLATE PLAN
SCALE: 1/2" = 1'-0"



FINGER CUTTING DETAIL
SCALE: 1" = 1'-0"

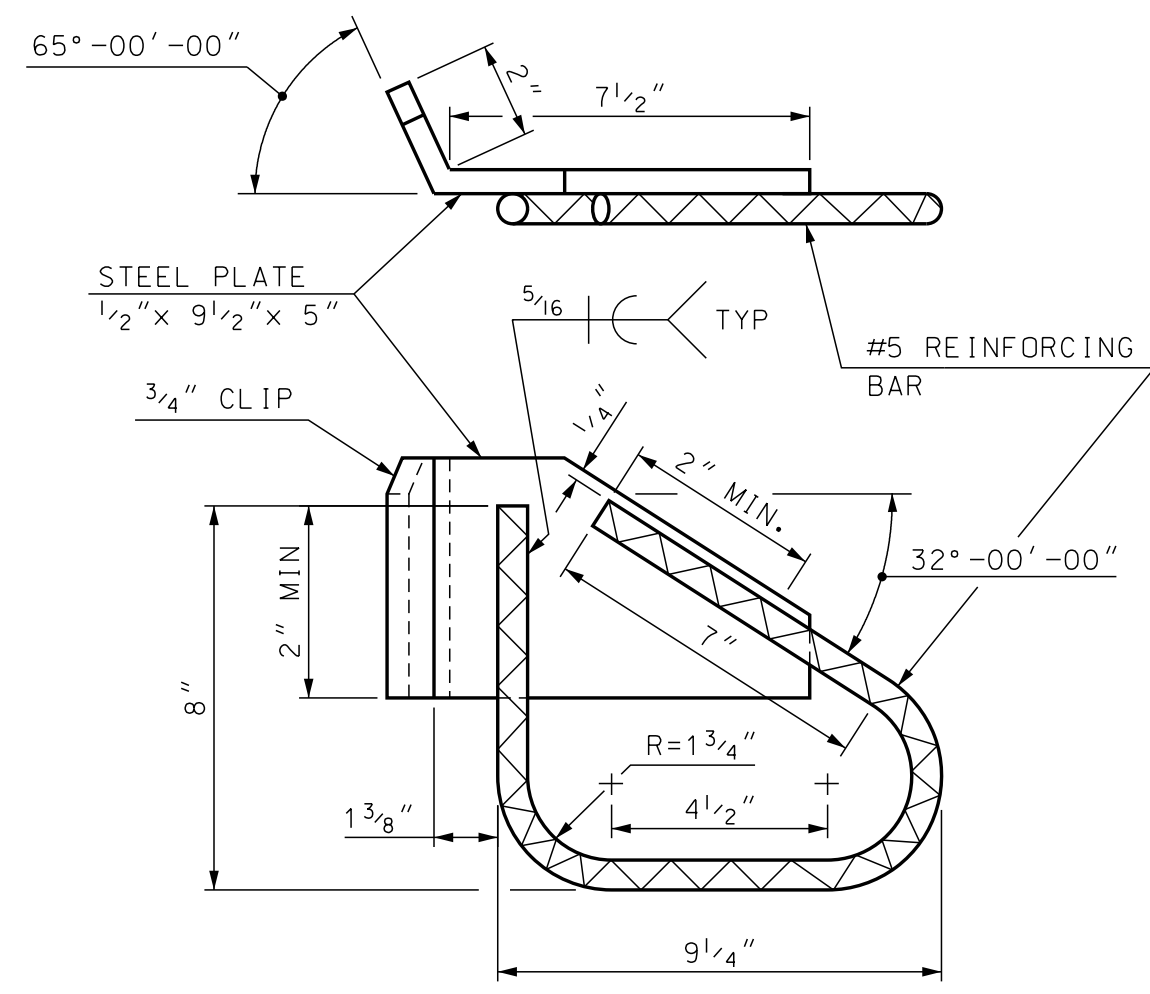


FABRIC TROUGH SPLICE
SCALE: 1" = 1'-0"

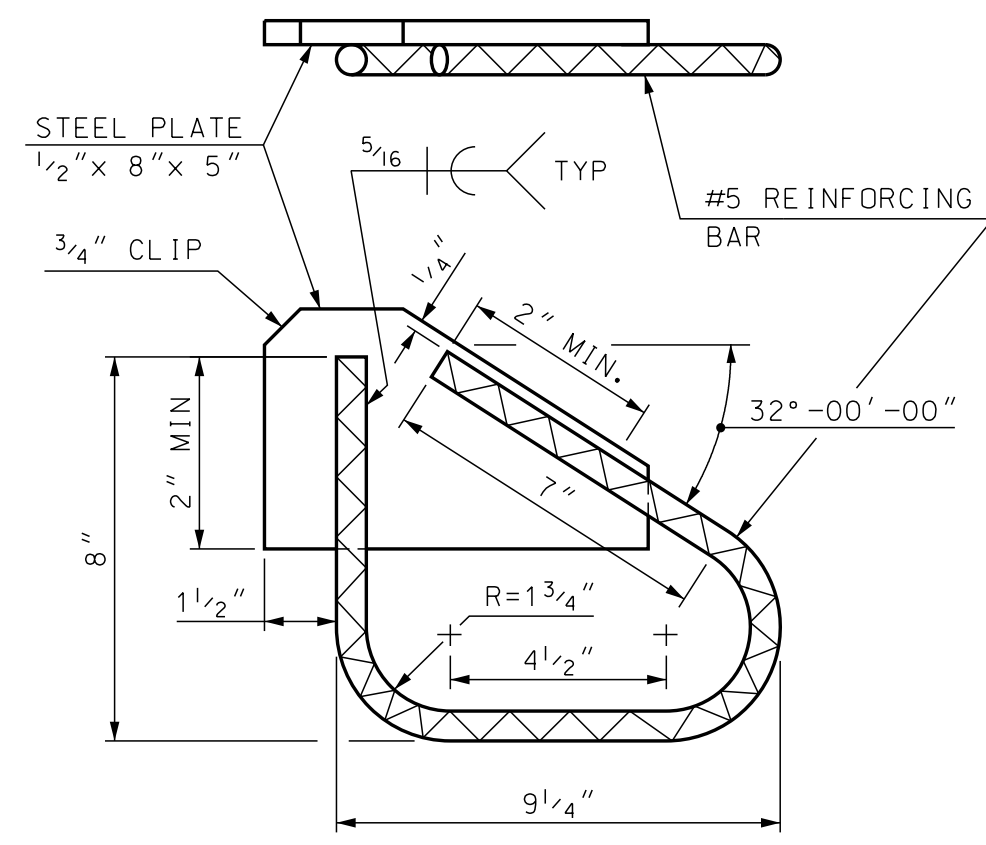
NOTE: DETAILS AND NOTES MAY NOT BE CURRENT. CLOSELY REVIEW BEFORE USING DETAILS.

SAMPLE PLAN
DATE: 08-2017

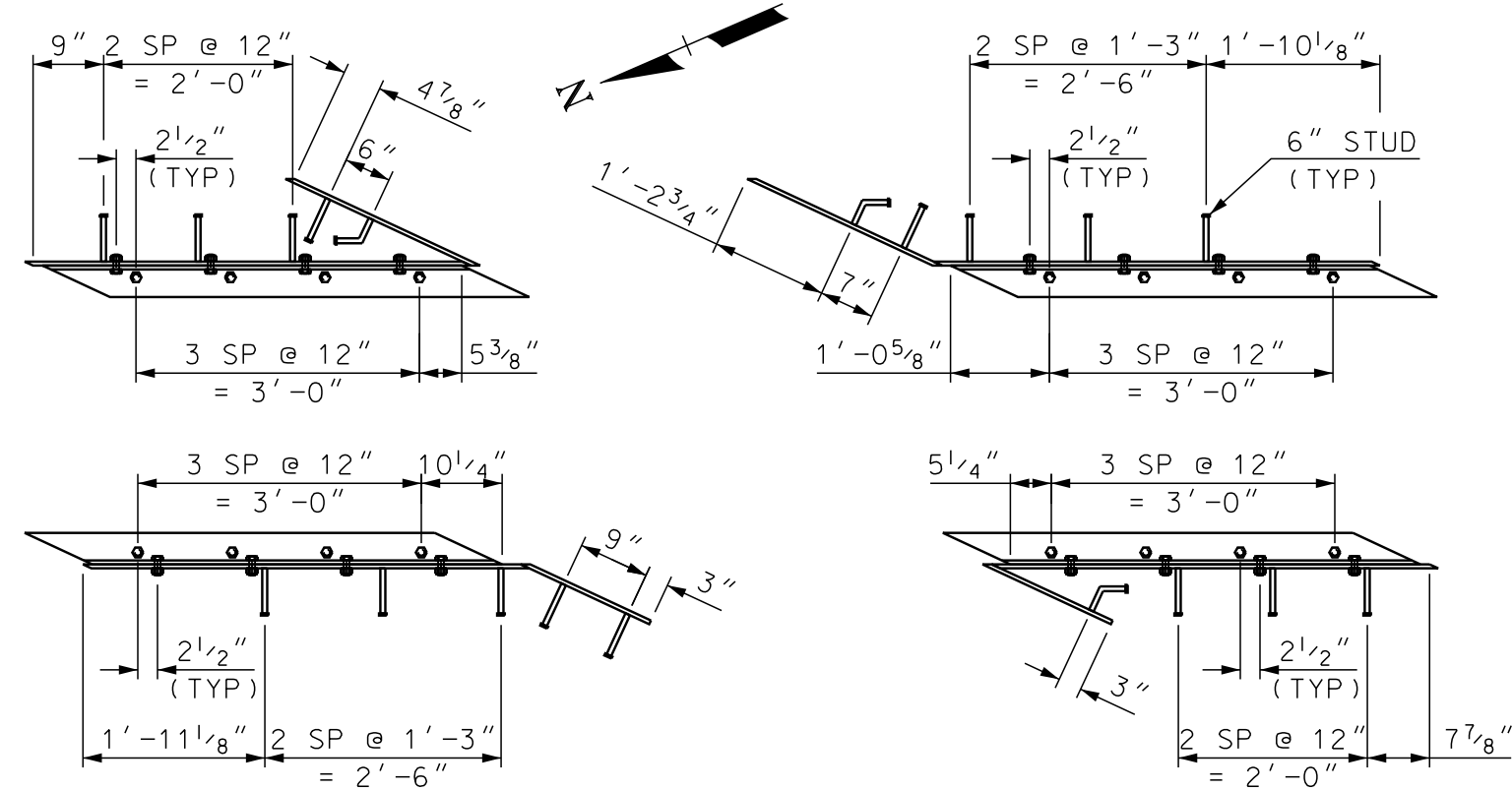
STATE OF NEW HAMPSHIRE										
DEPARTMENT OF TRANSPORTATION * BUREAU OF BRIDGE DESIGN										
TOWN	SULLIVAN	BRIDGE NO.	XXXXXX	STATE PROJECT	XX					
LOCATION	XX									
FINGER EXPANSION JOINT (3 OF 4)										
REVISIONS AFTER PROPOSAL		BY	DATE	CHECKED	BY	DATE	BRIDGE SHEET			
		DESIGNED	SMG	8/16	CHECKED	KFD	8/17	35 OF XX		
		DRAWN	SMG	8/16	CHECKED	KFD	8/17	FILE NUMBER		
		QUANTITIES	KFD	8/17	CHECKED	ABH	8/17	XX-X-X		
ISSUE DATE		FEDERAL PROJECT NO.			SHEET NO.		TOTAL SHEETS			
REV. DATE		-----			1		1			
SUBDIRECTORY	DGN LOCATOR	SHEET SCALE								
BRC/SUPER	10439 FingerJt	AS NOTED								



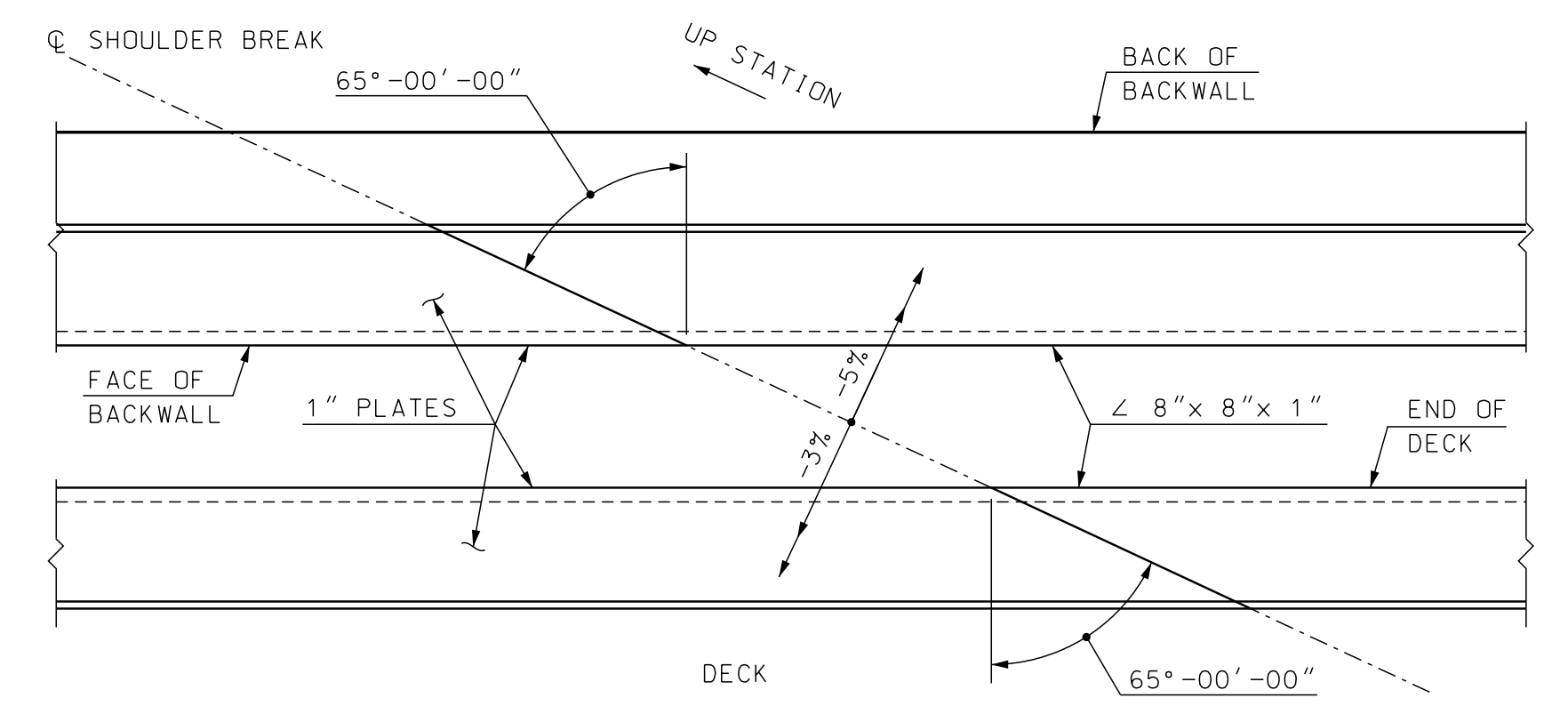
BENT ANCHORAGE DETAIL
SCALE: 3" = 1'-0"



ANCHORAGE DETAIL
SCALE: 3" = 1'-0"

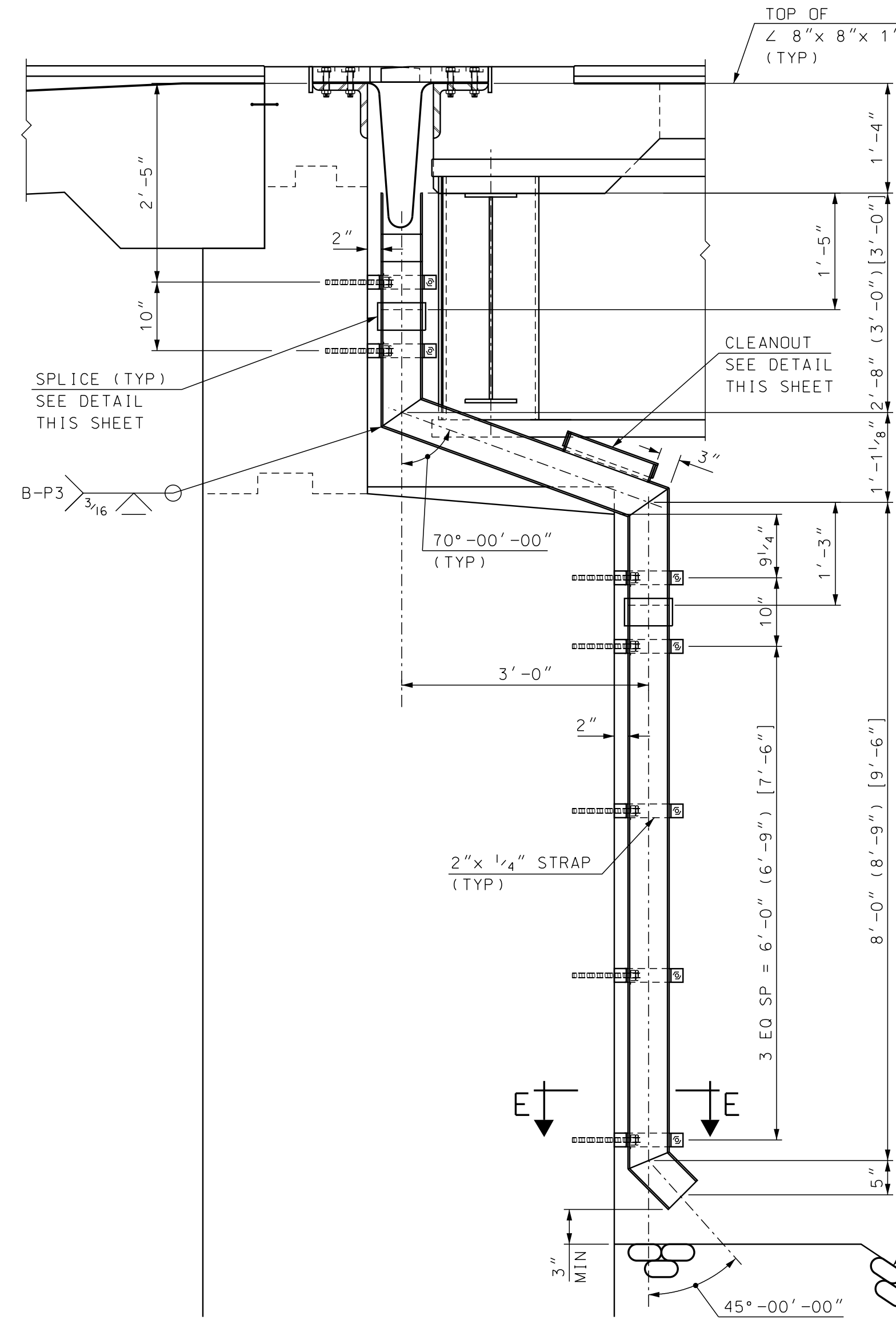


STUD AND BOLT LAYOUT
SCALE: 1/2" = 1'-0"

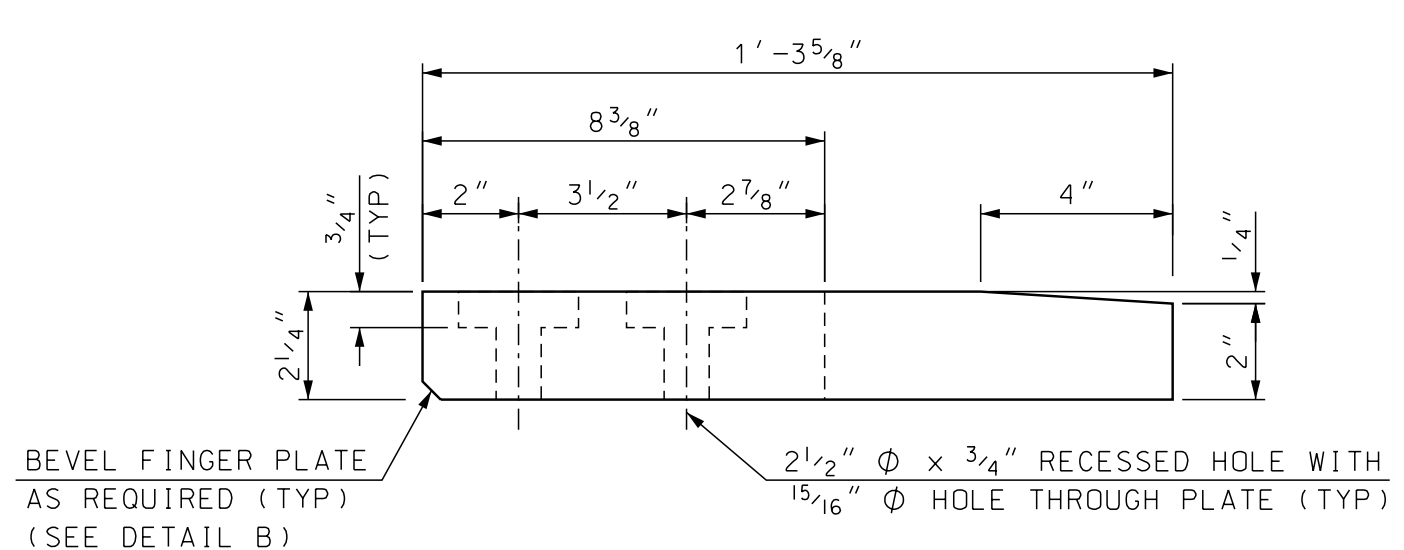


PLATE/ANGLE CONNECTION PLAN
SCALE: 1" = 1'-0"

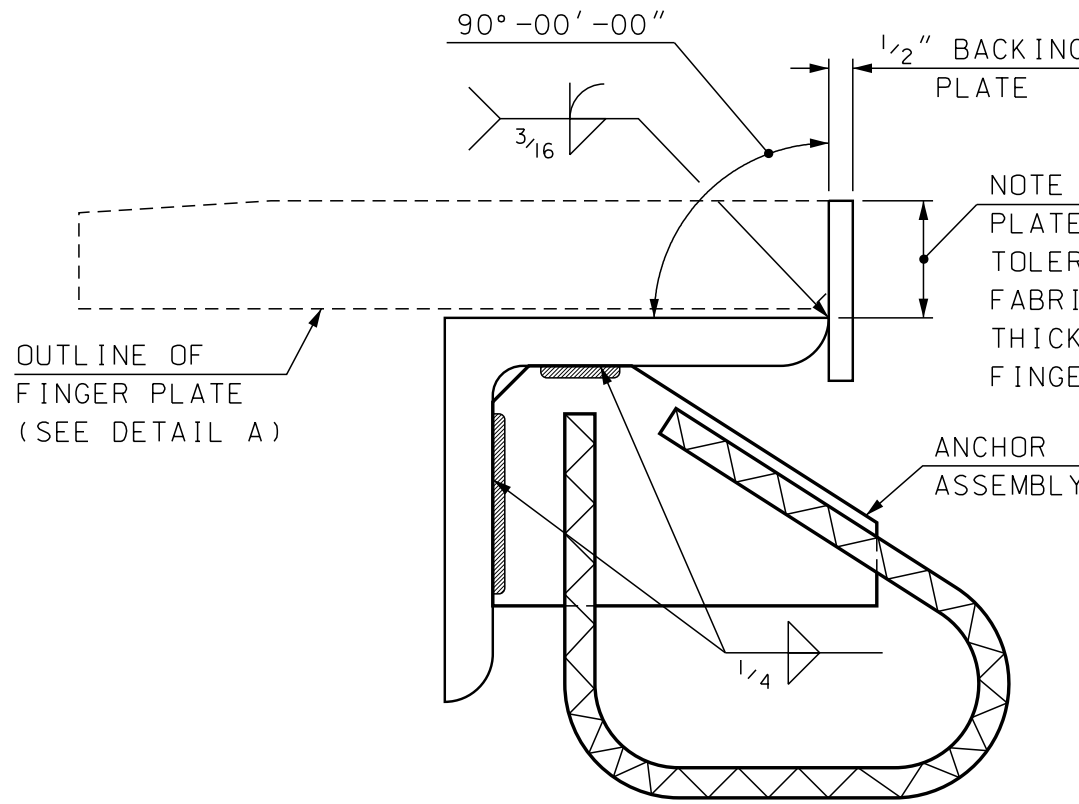
NOTE: DETAILS AND NOTES MAY NOT BE CURRENT. CLOSELY REVIEW BEFORE USING DETAILS.



SECTION THRU C OF HOPPER
SOUTH HOPPER SHOWN (CENTER HOPPER) [NORTH HOPPER]
SCALE: 3/4" = 1'-0"

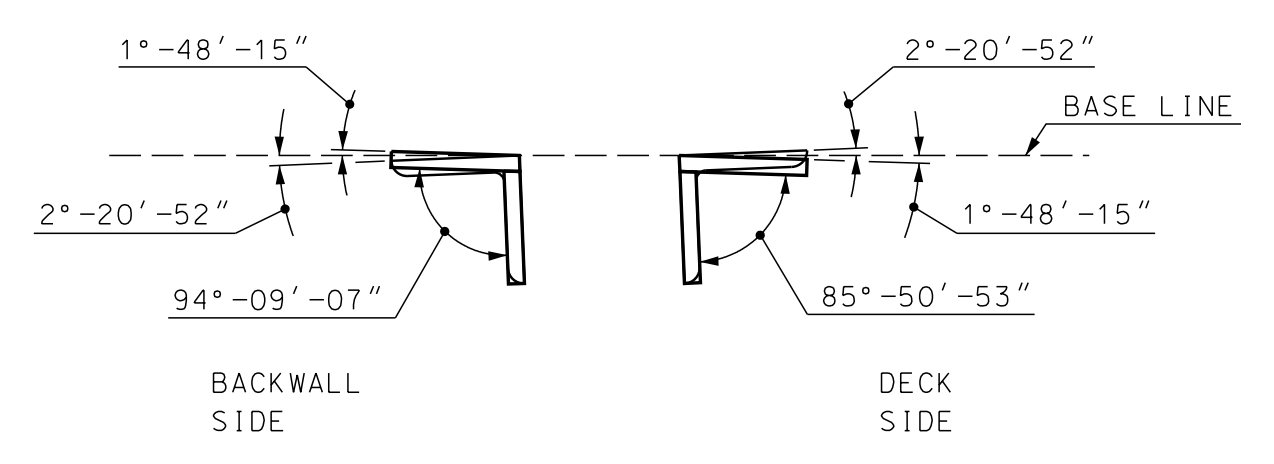


DETAIL A
SCALE: 3" = 1'-0"

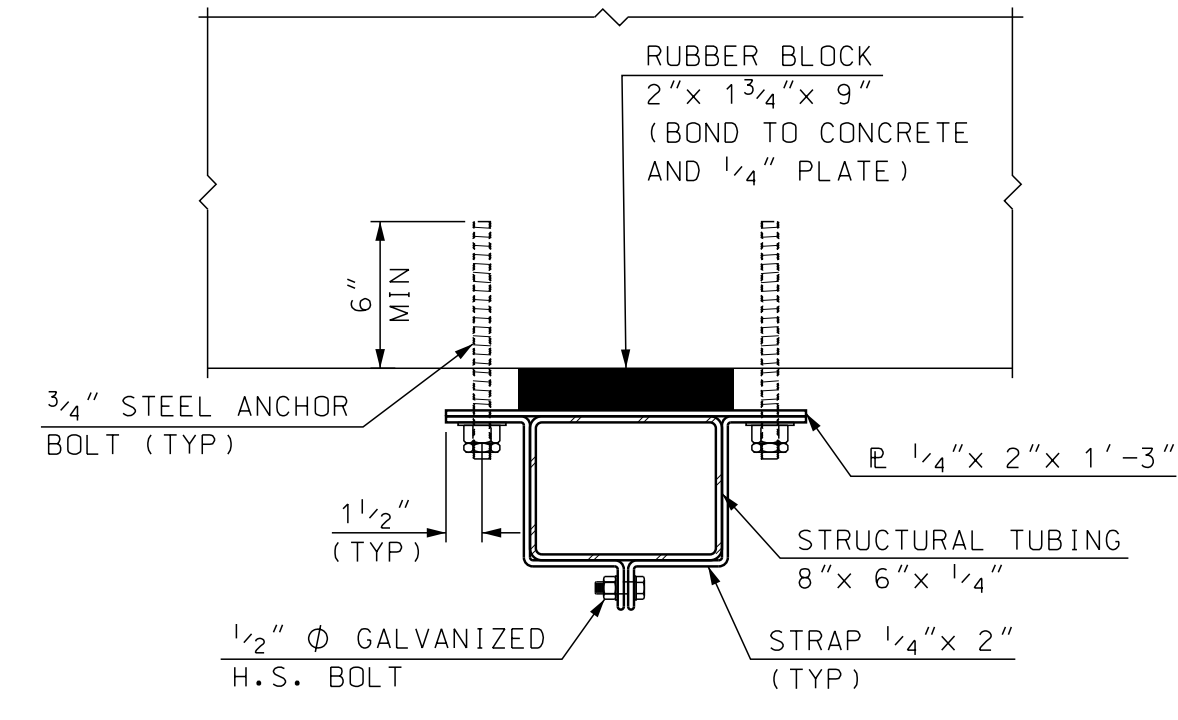


DETAIL B
SCALE: 3" = 1'-0"

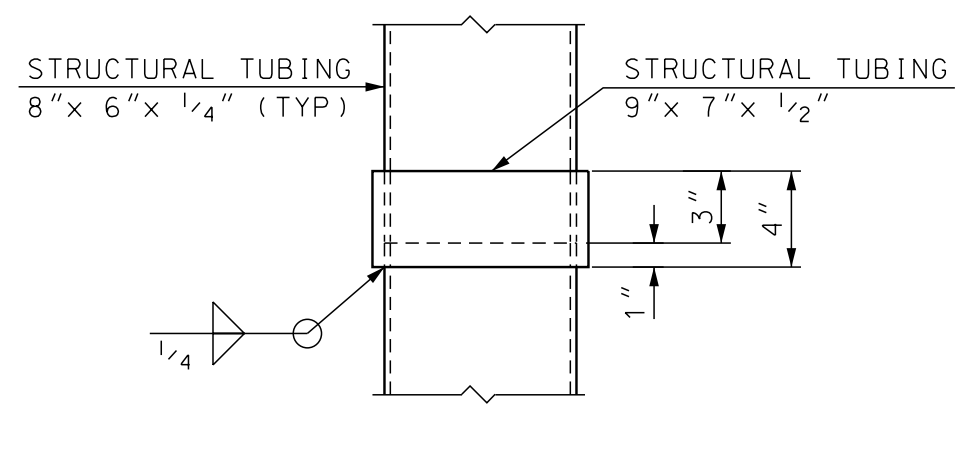
SAMPLE PLAN
DATE: 08-2017



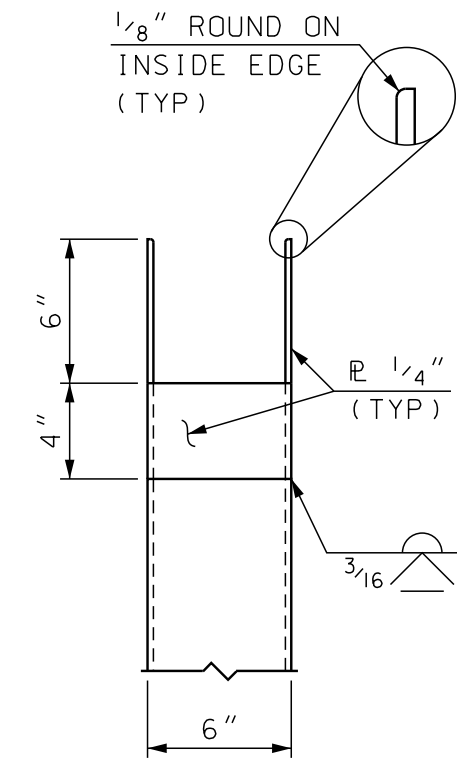
PLATE/ANGLE CONNECTION DETAIL
SCALE: 1" = 1'-0"



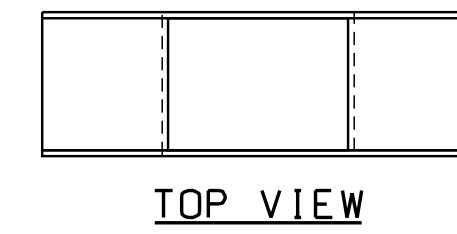
SECTION E-E
SCALE: 1 1/2" = 1'-0"



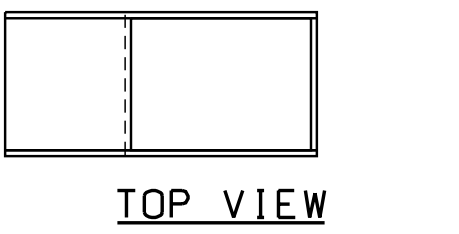
DOWNSPOUT SPLICE DETAIL
SCALE: 1 1/2" = 1'-0"



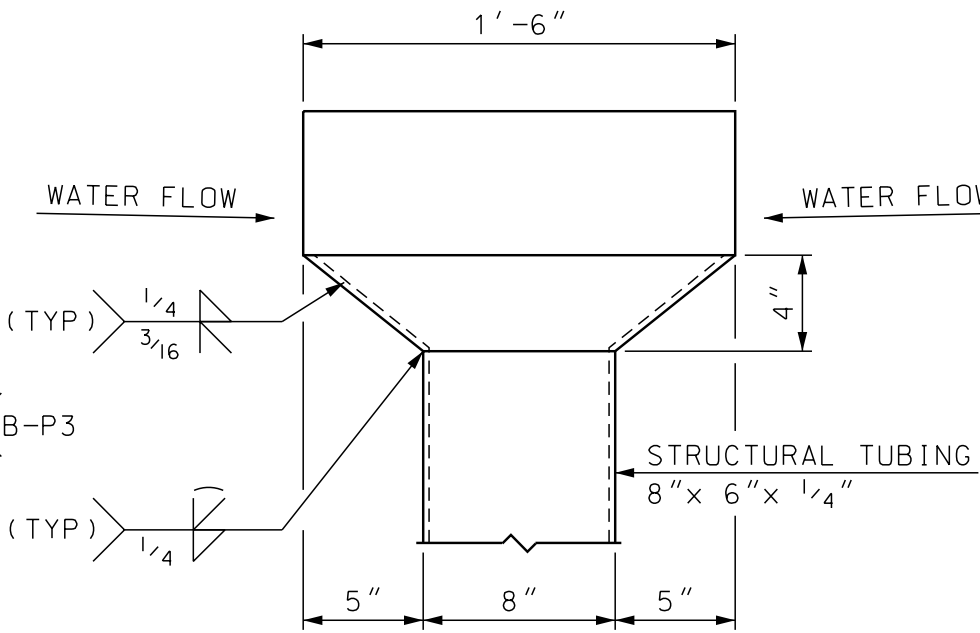
SIDE VIEW
2 WAY FLOW SHOWN
(1 WAY FLOW SIMILAR)



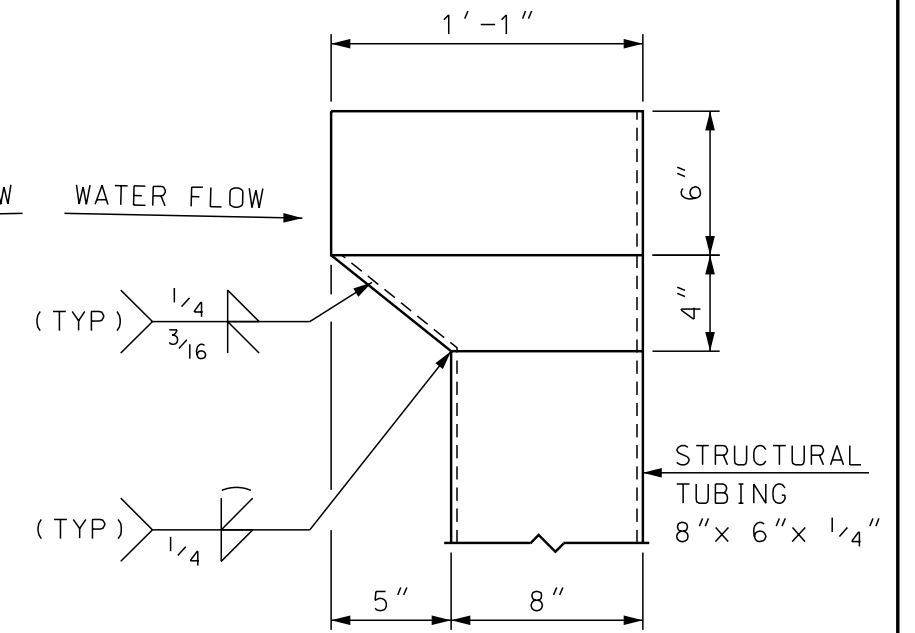
TOP VIEW



TOP VIEW

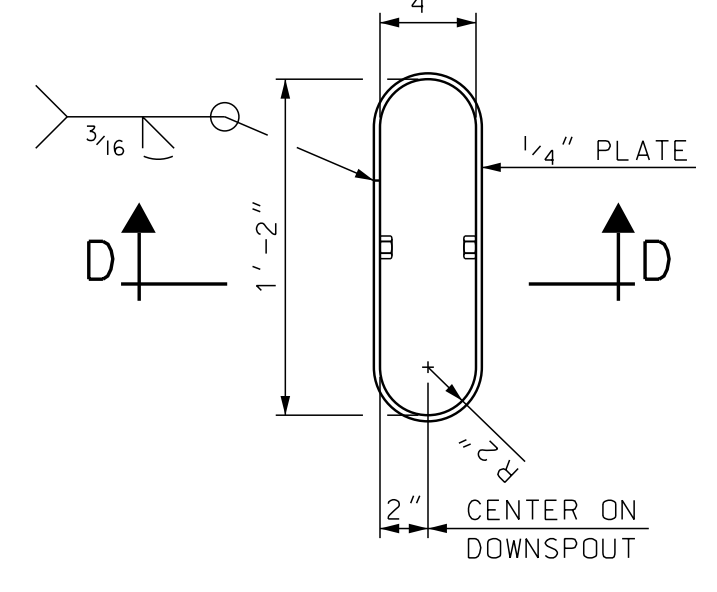


FRONT VIEW
2 WAY FLOW
(1 REQUIRED)

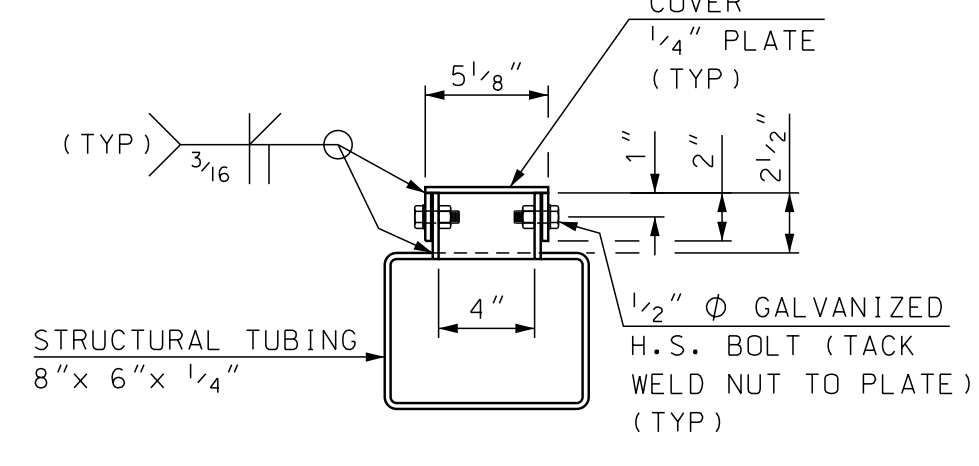


FRONT VIEW
1 WAY FLOW
(2 REQUIRED)

HOPPER DETAILS
SCALE: 1 1/2" = 1'-0"



CLEANOUT DETAIL
SCALE: 1 1/2" = 1'-0"
(COVER REMOVED)



SECTION D-D
SCALE: 1 1/2" = 1'-0"

STATE OF NEW HAMPSHIRE									
DEPARTMENT OF TRANSPORTATION * BUREAU OF BRIDGE DESIGN									
TOWN	SULLIVAN	BRIDGE NO.	XXXXXX	STATE PROJECT	XX				
LOCATION	XX								
FINGER PLATE EXPANSION JOINT (4 OF 4)									
REVISIONS AFTER PROPOSAL		BY	DATE	CHECKED	BY	DATE	BRIDGE SHEET		
		SMG	8/16	KFD	KFD	8/17	36 OF XX		
		SMG	8/16	KFD	KFD	8/17	FILE NUMBER		
		KFD	8/17	ABH	ABH	8/17	XX-X-X		
ISSUE DATE		FEDERAL PROJECT NO.				SHEET NO.	TOTAL SHEETS		
REV. DATE		-----				1	1		

SUBDIRECTORY	DGN LOCATOR	SHEET SCALE
BRC/SUPER	10439 FingerJt	AS NOTED