

TYPICAL APPLICATION

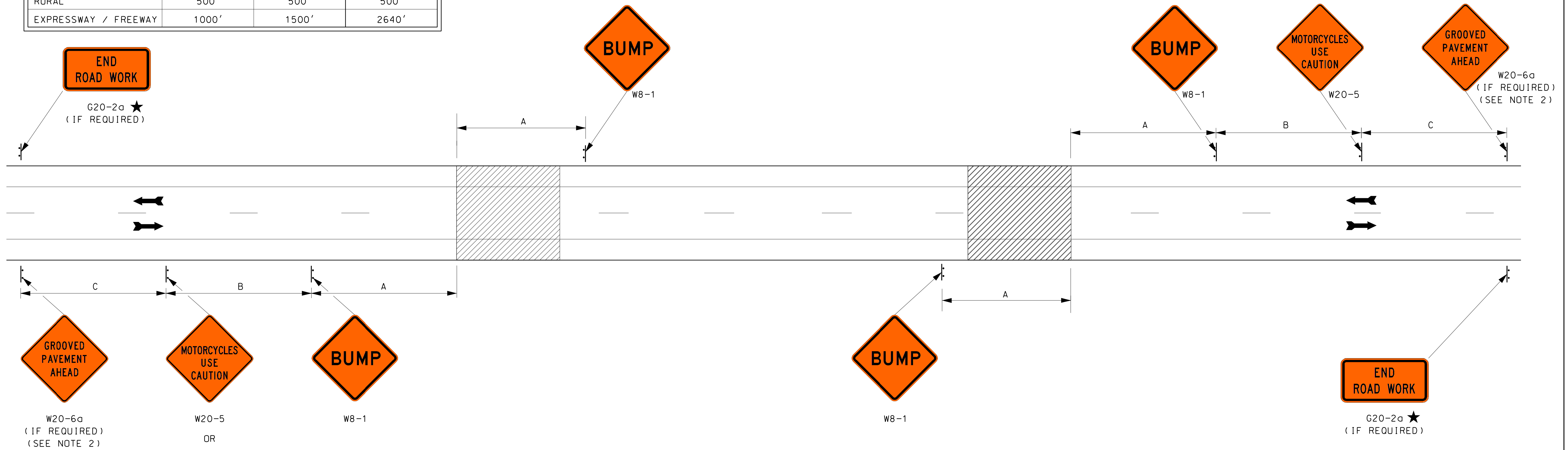
CONSTRUCTION SIGNING FOR COLD-PLANED OPERATIONS

STANDARD NO. TC-8

REVISION DATE
08/03/2004
03/16/2017
11/28/2018
07/11/2022

*.DGN FILE NAME
TC-8

ROAD TYPE	DISTANCE BETWEEN SIGNS		
	A	B	C
URBAN (≤ 30 MPH)	100'	100'	100'
URBAN (≥ 35 MPH)	350'	350'	350'
RURAL	500'	500'	500'
EXPRESSWAY / FREEWAY	1000'	1500'	2640'



CONSTRUCTION SIGNING FOR COLD-PLANED SURFACES

GENERAL NOTES

- ★ SEE AMENDMENT NO. 10 ON TC-1.
- 1. THE ABOVE DIAGRAM ILLUSTRATES COLD-PLANED SURFACES FOR PAVEMENT MATCHES. THIS SAME SIGN PACKAGE SHALL BE USED FOR ANY COLD-PLANED SURFACE WITHIN THE LIMITS OF THE TRAVELED WAY. SEE PAVEMENT MATCH TYPICAL INCLUDED IN THE PLANS FOR LENGTH OF PAVEMENT MATCH, FILLET DETAIL, ETC.
- 2. THE GROOVED PAVEMENT AHEAD (W20-6a) SIGN MAY BE ELIMINATED FOR RELATIVELY SHORT PAVEMENT MATCHES AT THE DISCRETION OF THE ENGINEER. IF W20-6a IS NOT USED W8-15 & 18-15P MUST BE PLACED.

LEGEND	
	COLD-PLANED SURFACE

WORK ZONE TRAFFIC CONTROL
CONSTRUCTION SIGNING FOR COLD-PLANED OPERATIONS

NOT TO SCALE

STANDARD PLANS



STANDARD NO. TC-8