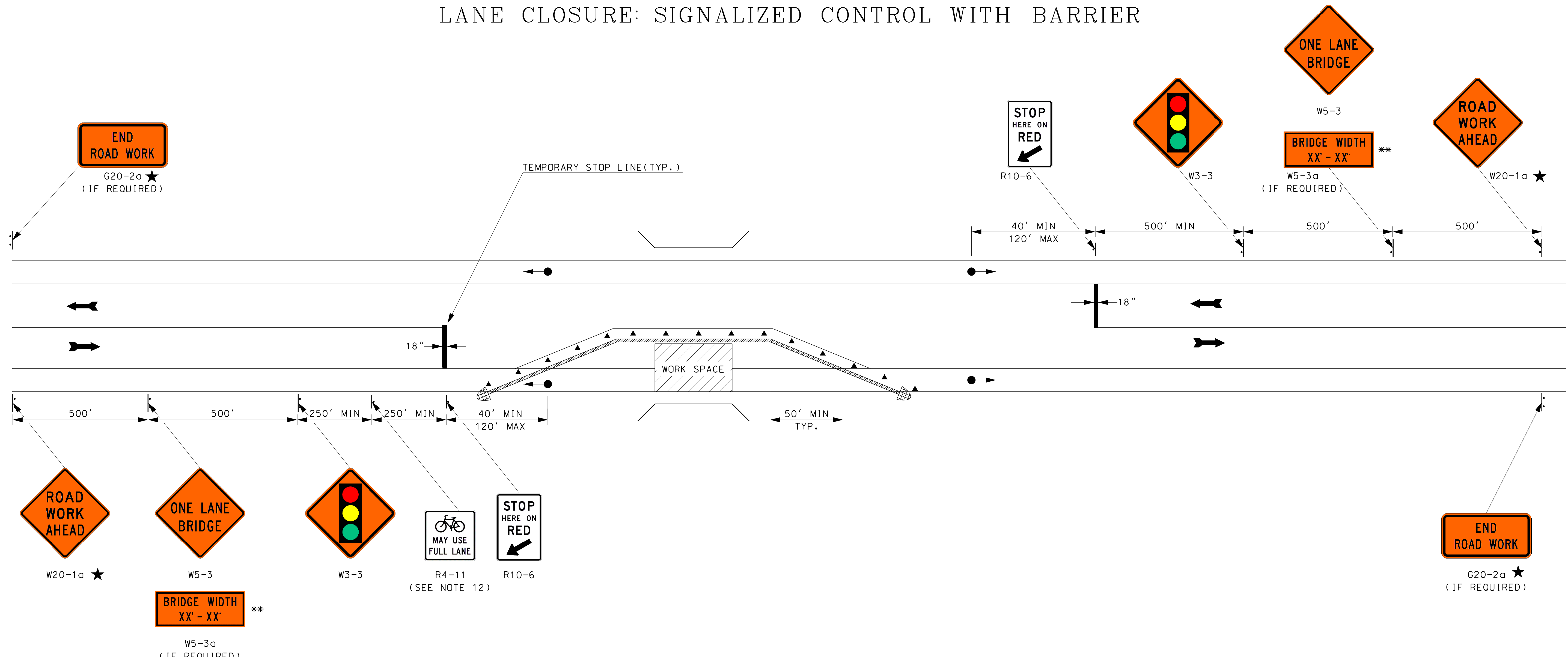


# TYPICAL APPLICATION

## LANE CLOSURE: SIGNALIZED CONTROL WITH BARRIER



### GENERAL NOTES

- ★ SEE AMENDMENT NO. 10 ON TC-1.
- \*\* POSTED BRIDGE WIDTH SHALL BE 1 FOOT LESS THAN ACTUAL WIDTH.
- 1. TEMPORARY TRAFFIC SIGNALS ARE PREFERABLE TO FLAGGERS FOR LONG-TERM PROJECTS AND OTHER ACTIVITIES THAT WOULD REQUIRE FLAGGERS AT NIGHT.
- 2. THE MAXIMUM LENGTH OF THE ACTIVITY AREA FOR ONE-WAY TRAFFIC SIGNAL CONTROL IS DETERMINED BY THE CAPACITY REQUIRED TO HANDLE THE PEAK HOUR DEMAND. SIGNAL TIMING SHALL BE ESTABLISHED BY QUALIFIED PERSONNEL.
- 3. SIGNALS SHALL BE INSTALLED AND OPERATED IN ACCORDANCE WITH THE REQUIREMENTS OF PART IV OF THE MUTCD. TEMPORARY TRAFFIC CONTROL SHALL MEET THE PHYSICAL DISPLAY AND OPERATIONAL REQUIREMENTS OF CONVENTIONAL TRAFFIC SIGNALS.
- 4. ADEQUATE AREA ILLUMINATION SHALL BE PROVIDED TO CLEARLY IDENTIFY THE TRANSITION AREAS AT NIGHT FOR LONG-TERM OPERATIONS.
- 5. STOP LINES 18 INCHES WIDE SHALL BE INSTALLED. ADD "NO-PASSING" LINES WHEN NECESSARY. REMOVABLE PAVEMENT MARKINGS MAY BE USED. CONFLICTING PAVEMENT MARKINGS AND RAISED PAVEMENT MARKER REFLECTORS BETWEEN THE ACTIVITY AREA AND THE STOP LINES SHALL BE REMOVED.

- 6. HAZARD IDENTIFICATION BEACONS OR TYPE A FLASHING WARNING LIGHTS MAY BE MOUNTED WITH WARNING SIGNS, IF WARRANTED.
- 7. THE VERTICAL ALIGNMENT OF THE ROADWAY MAY REQUIRE ADJUSTMENTS IN THE HEIGHT OF THE SIGNAL HEADS.
- 8. WHEN THE SIGNAL IS CHANGED TO A FLASH CONDITION EITHER MANUALLY OR AUTOMATICALLY, ALL APPROACHES SHALL FLASH RED.
- 9. THE USE OF BARRIER IS ANTICIPATED FOR MOST SITUATIONS REQUIRING APPLICATION OF THIS LANE CLOSURE. REQUIRED BARRIER PROTECTION SHALL BE DETERMINED AS DESCRIBED IN THE MOST CURRENT EDITION OF THE ROADSIDE DESIGN GUIDE AS ADOPTED BY THE DEPARTMENT TAPER RATES FOR BARRIER ARE FOUND ON THE PORTABLE CONCRETE BARRIER STANDARD (GR-23).
- 10. FOR TEMPORARY TRAFFIC BARRIER CRITERIA, SEE SECTION 6F.85 OF THE MUTCD.
- 11. CRASH CUSHIONS SHALL BE DELINEATED WITH TYPE 3 OBJECT MARKERS. SEE MUTCD FIGURE 2C-13.
- 12. INSTALL ON ALL APPROACHES IF THE CRITERIA IN AMENDMENT NO. 9 ON TC-1 APPLIES.

LEGEND	
	PORTABLE BARRIER
	SIGNAL HEAD
	IMPACT ATTENUATOR
	CHANNELIZING DEVICES

**WORK ZONE TRAFFIC CONTROL**  
**LANE CLOSURE: SIGNALIZED CONTROL WITH BARRIER**

NOT TO SCALE

STANDARD NO. TC-7
REVISION DATE
08/03/2004
03/16/2017
11/28/2018
05/17/2019
07/11/2022
*.DGN FILE NAME
TC-7

STANDARD PLANS



STANDARD NO. TC-7