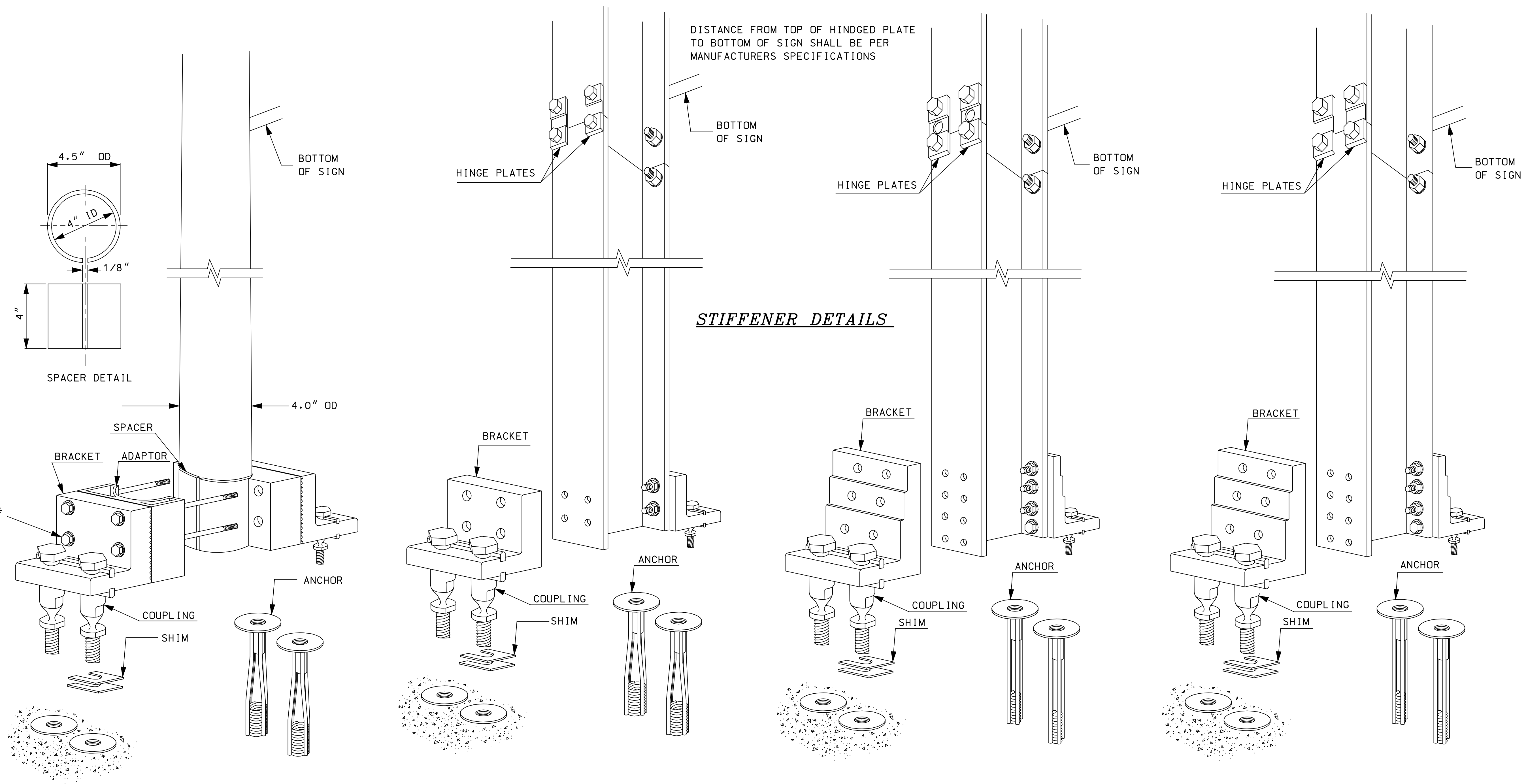


REVISION DATE
07-13-2001
02-26-2010



STIFFENER DETAILS

TRANSPO TYPE APx4.5 (S/B) (OR EQUAL)
USE FOR 4 " DIAMETER ALUMINUM TUBE

TRANSPO TYPE A16-LP (OR EQUAL)
USE FOR W6x9 STEEL BEAM

TRANSPO TYPE B-525-LP (OR EQUAL)
USE FOR W6x12, W6x15, W8x18,
OR W8x21 STEEL BEAMS

TRANSPO TYPE B-650-LP (OR EQUAL)
USE FOR W10x22, W10x26, W12x26,
OR W14x30 STEEL BEAMS

GENERAL NOTES

1. ASSEMBLE ACCORDING TO MANUFACTURER'S INSTRUCTIONS.
2. SEE PS-7 OR PS-8 FOR STEEL BEAM SIZES.
3. SEE PS-10 FOR BRACKET SELECTION TABLES FOR TYPE B525-LP & B-650-LP.

SIGNING STANDARD
BREAKAWAY MOUNTS

* BOLT HEAD SHALL FACE TRAFFIC