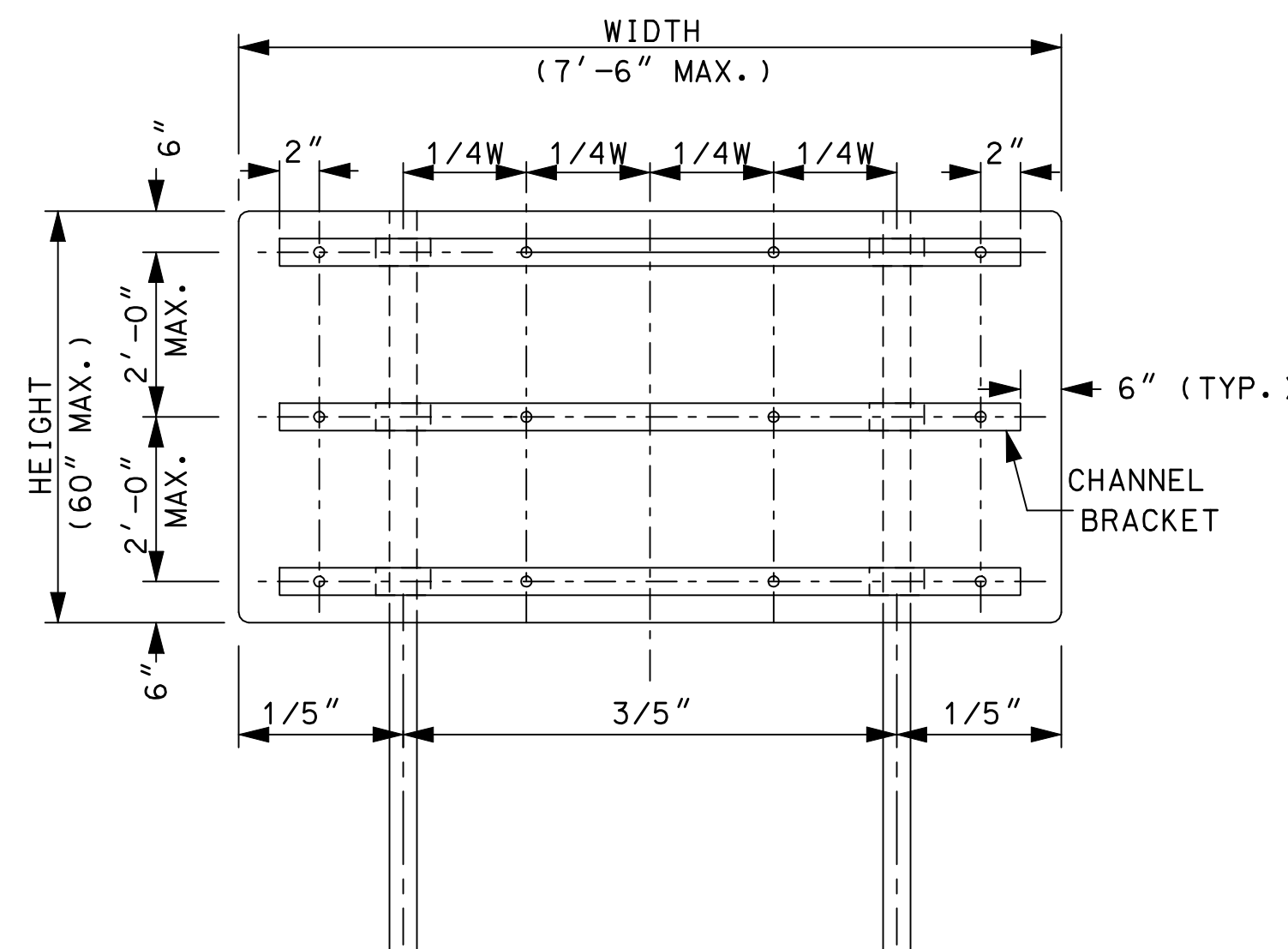
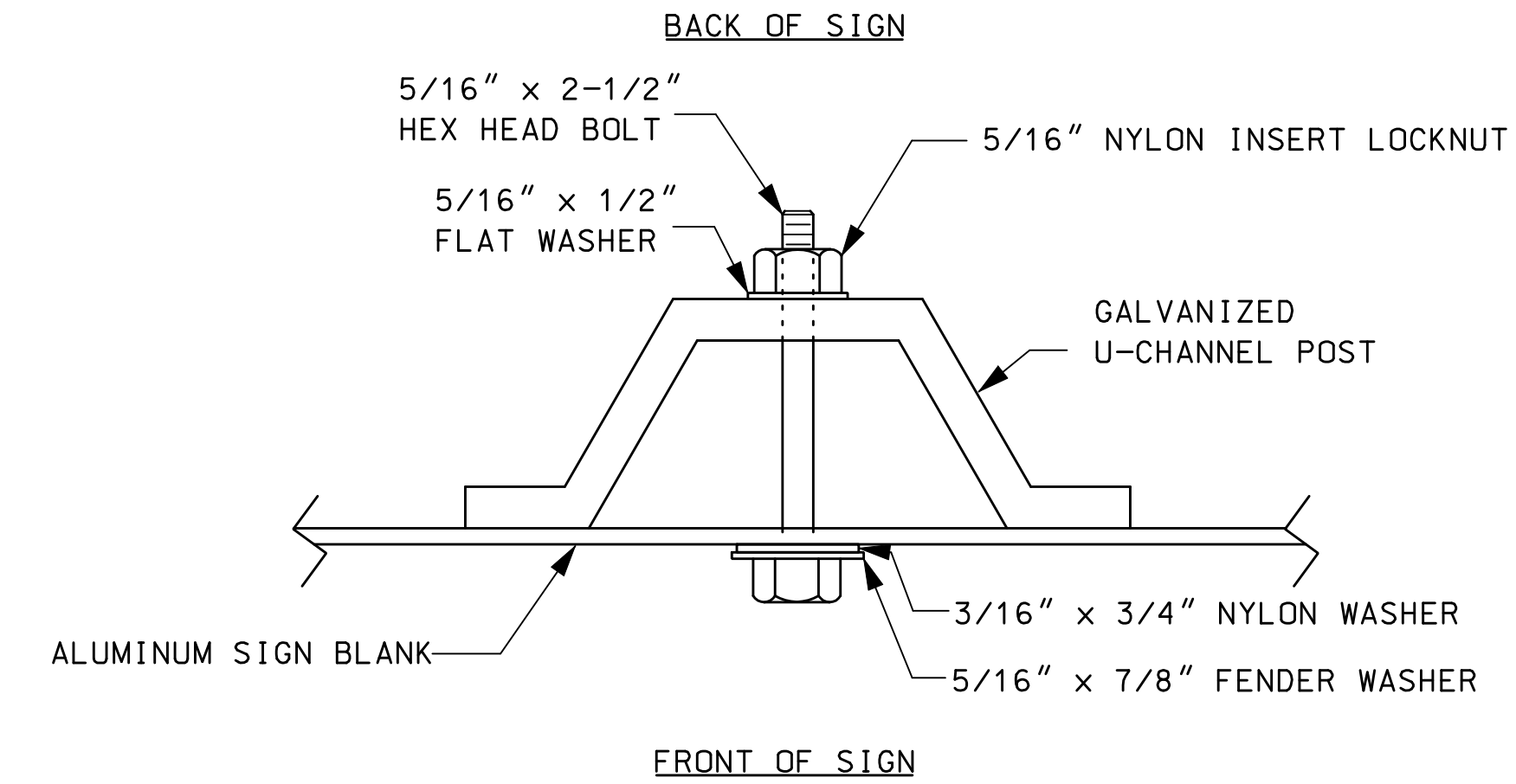
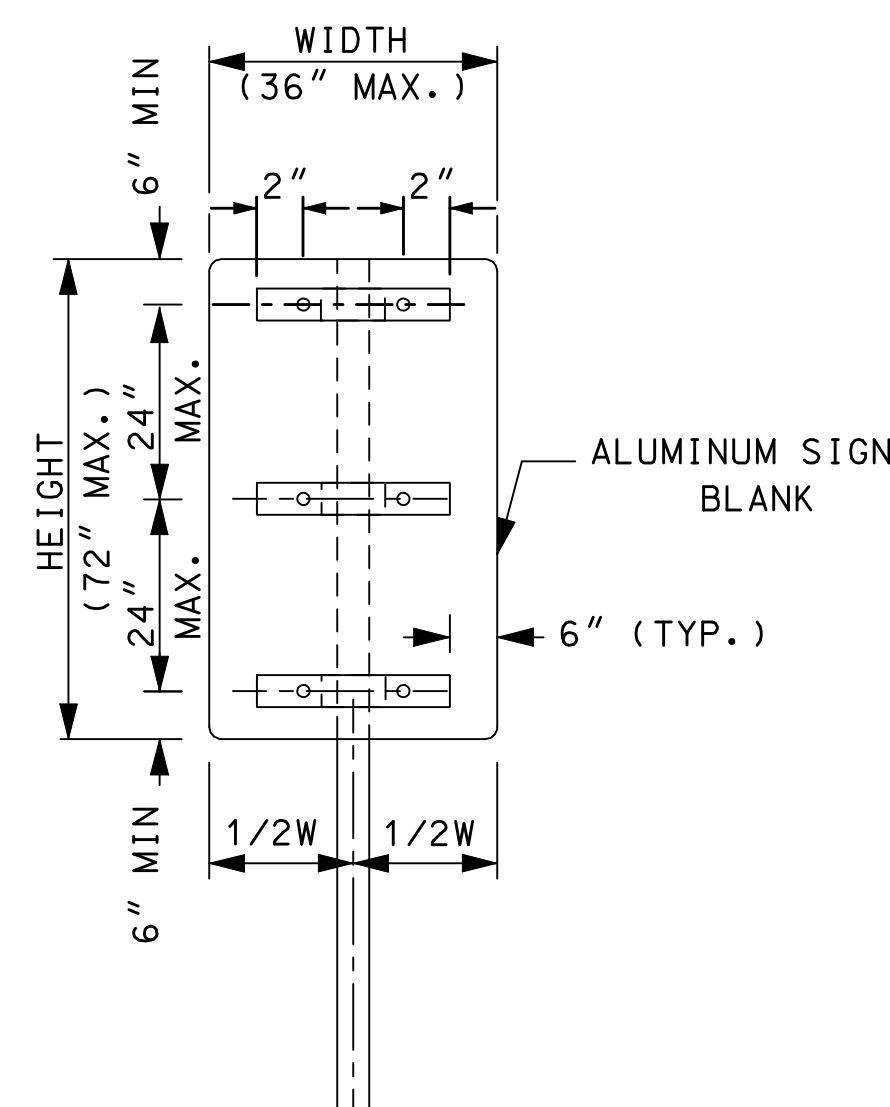


REVISION DATE
07-13-2001
02-26-2010

*DGN FILE NAME
PS-3

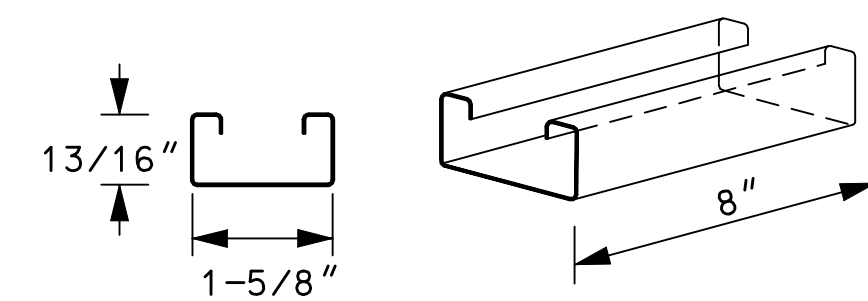


ALUMINUM POST SPACING

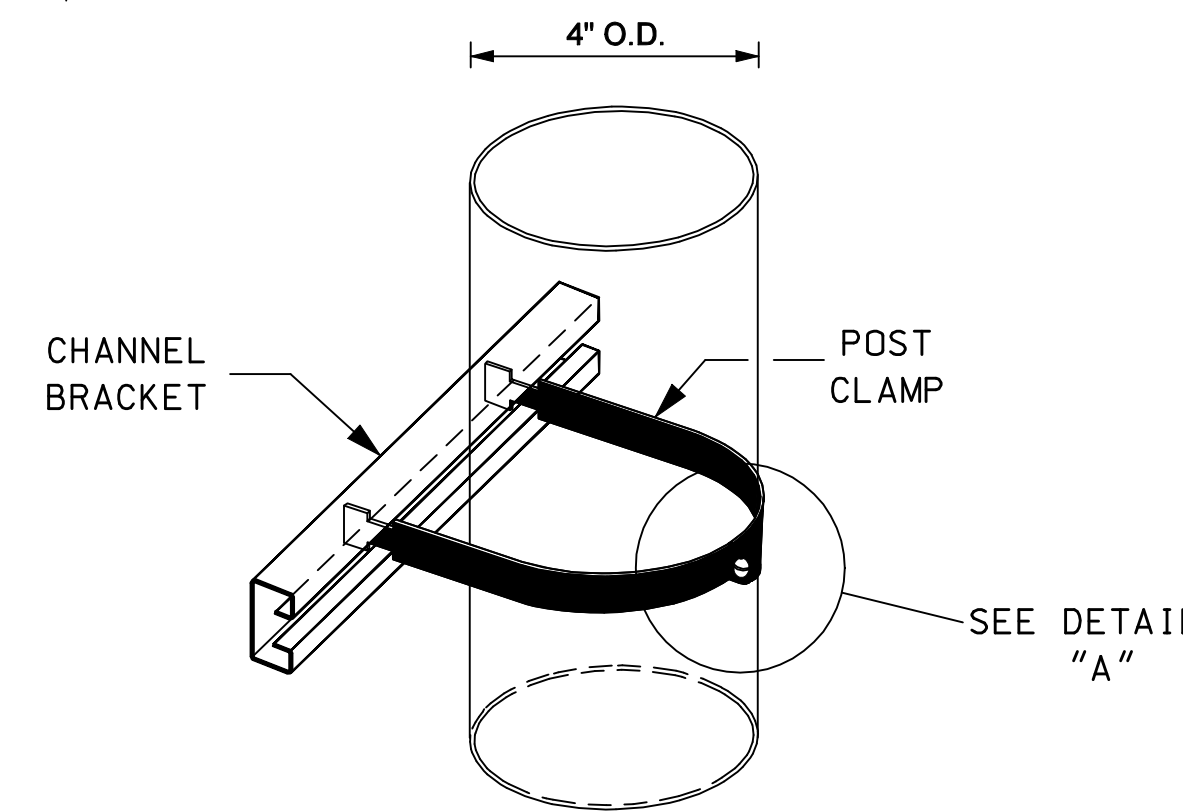


SIGN AND U-CHANNEL POST ASSEMBLY DETAIL

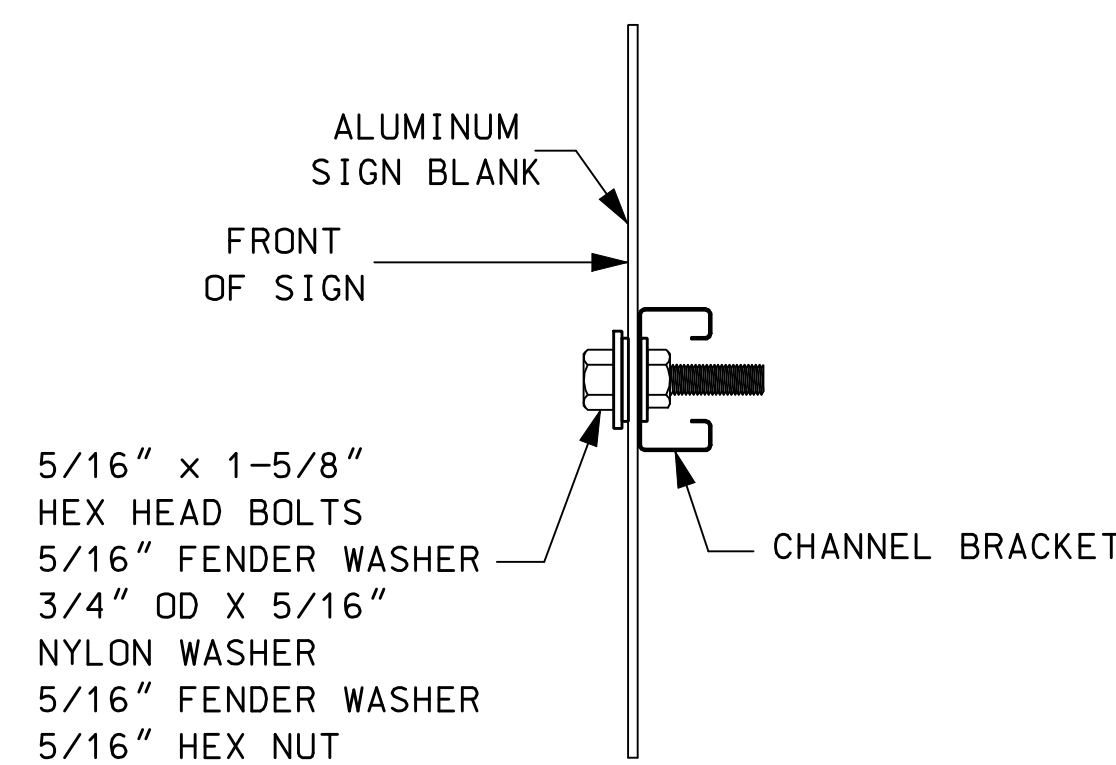
1. FOR GALVANIZED U-CHANNEL POST, SEE NHDOT STANDARD SPECIFICATION FOR ROAD AND BRIDGE CONSTRUCTION BOOK, SECTION 615.
2. THE STAINLESS STEEL HEX HEAD BOLT LENGTH SHALL BE INCREASED TO ACCOMMODATE A THICKER SIGN MATERIAL.
3. THE POST SHALL BE SET A MINIMUM OF 3 INCHES TO A MAXIMUM OF 6 INCHES BELOW THE TOP OF SIGN.
4. U-CHANNEL POSTS SHALL NOT BE SPLICED AND DO NOT REQUIRE CHANNEL BRACKETS.
5. U-CHANNEL POSTS SHALL BE INSTALLED 36" OR GREATER BELOW EXISTING GROUND.



CHANNEL BRACKET 14 GAUGE



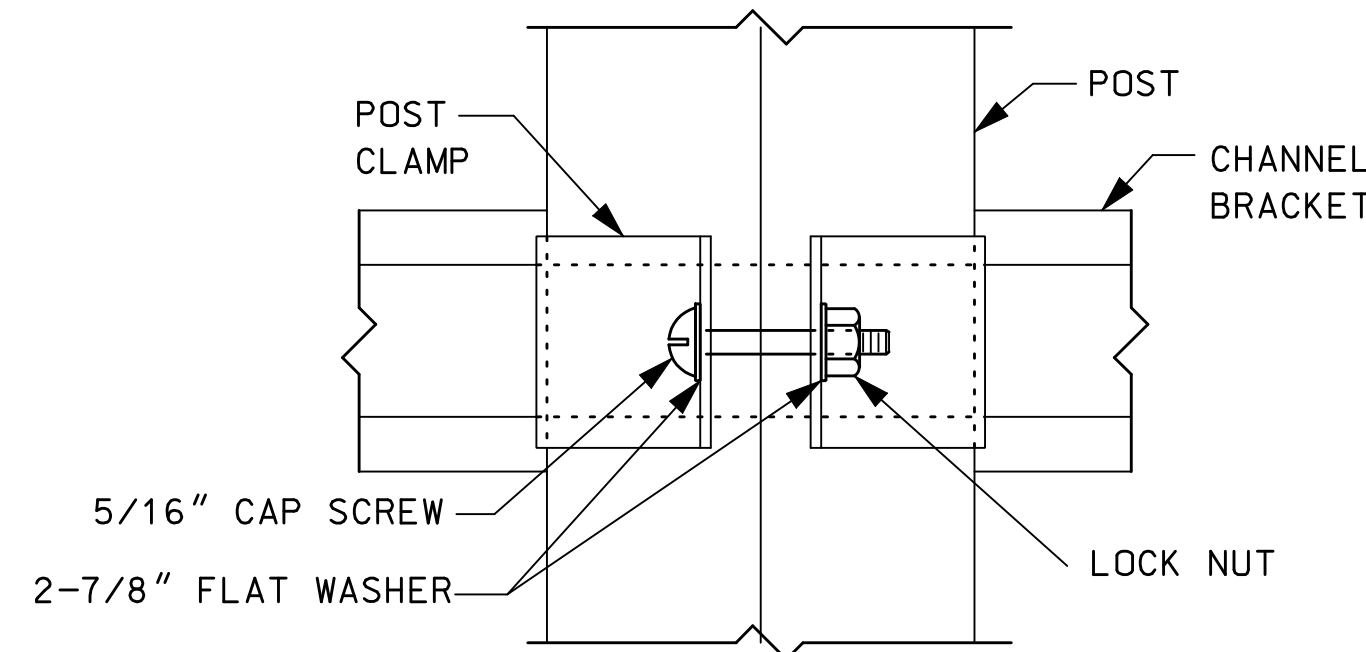
POST CLAMP 4" DIA. 11 GAUGE



SIGN BLANK ATTACHMENT DETAIL

GENERAL NOTES

1. BRACKETS: ALL SIGNS TO BE FASTENED TO POSTS WITH POST CLAMP ASSEMBLIES AS SHOWN.
2. SIGN WIDTH 36" OR LESS MAY BE MOUNTED ON ONE (1) U-CHANNEL POST.
3. RECTANGULAR SIGNS 72" x 48" OR LESS MAY BE MOUNTED ON DUAL U-CHANNEL POST. DIAMOND SHAPE SIGNS GREATER THAN 36" SHALL BE MOUNTED ON ALUMINUM TUBING (INTERSTATE).
4. SIGN HEIGHT 48" OR LESS, CENTER CHANNEL BRACKET MAY BE OMITTED.
5. DIAMOND SHAPE SIGNS 48" OR LARGER REQUIRE TWO CHANNEL BRACKETS.
6. SIGNS 72" x 72" OR GREATER SHALL BE ALUMINUM PLANK.



DETAIL A

POST CLAMP ASSEMBLIES

1. SEE SPECIFICATION 615.2.7.3 FOR ADDITIONAL INFORMATION REGARDING THE CHANNEL BRACKET AND POST CLAMP.
2. USE 5/16" STAINLESS STEEL CAP SCREW WITH 2-7/8" O.D. WASHERS & LOCKNUT FOR CLAMP CONNECTION.

SIGNING STANDARD
ALUMINUM SHEET DETAILS FOR TUBING & U-CHANNEL POSTS

STANDARD PLANS