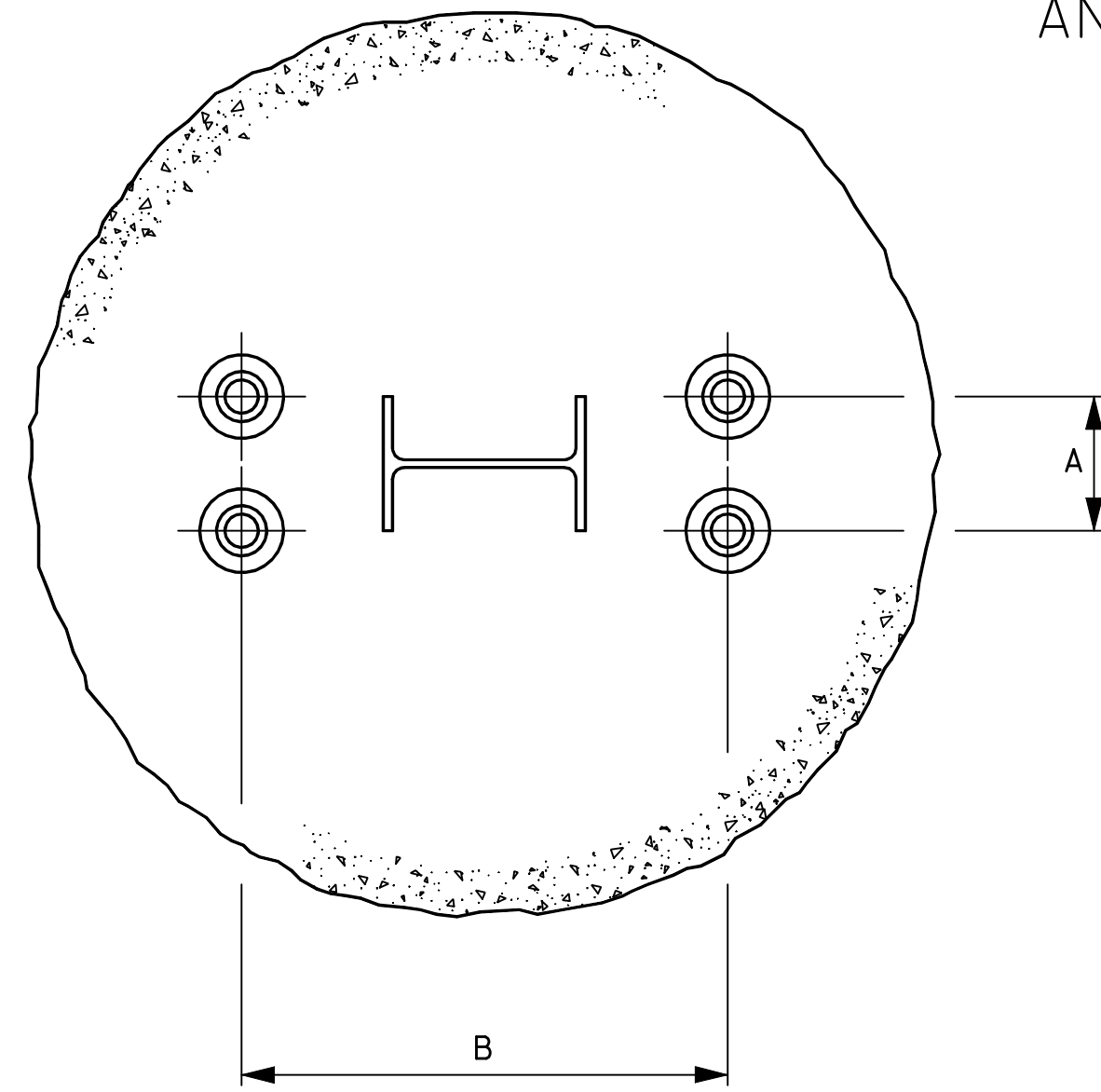


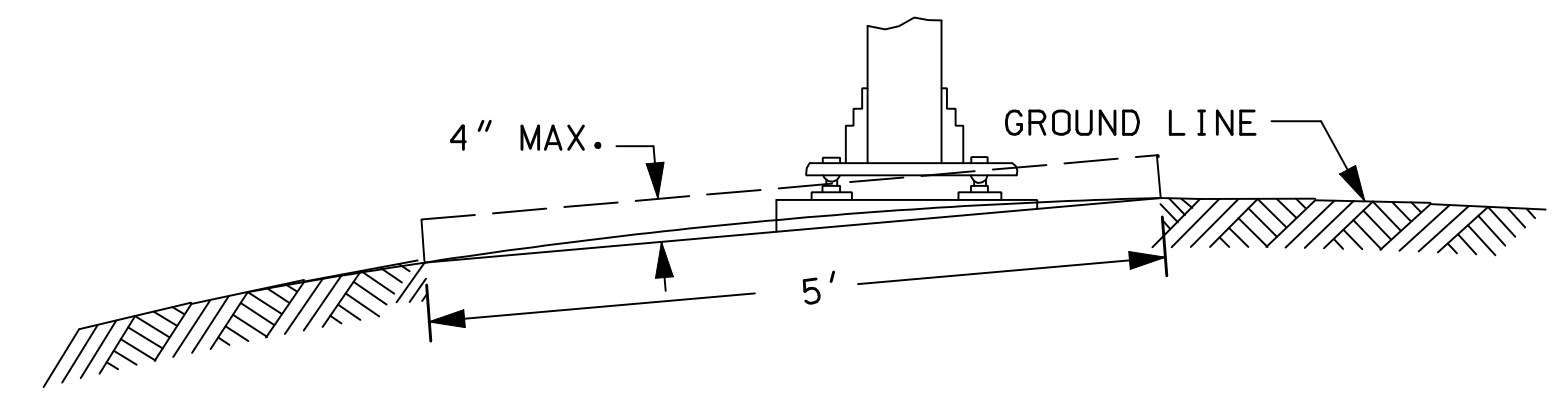
REVISION DATE
07-13-2001
02-26-2010

*.DGN FILE NAME
PS-10

ANCHOR INSTALLATION & BRACKET SELECTION

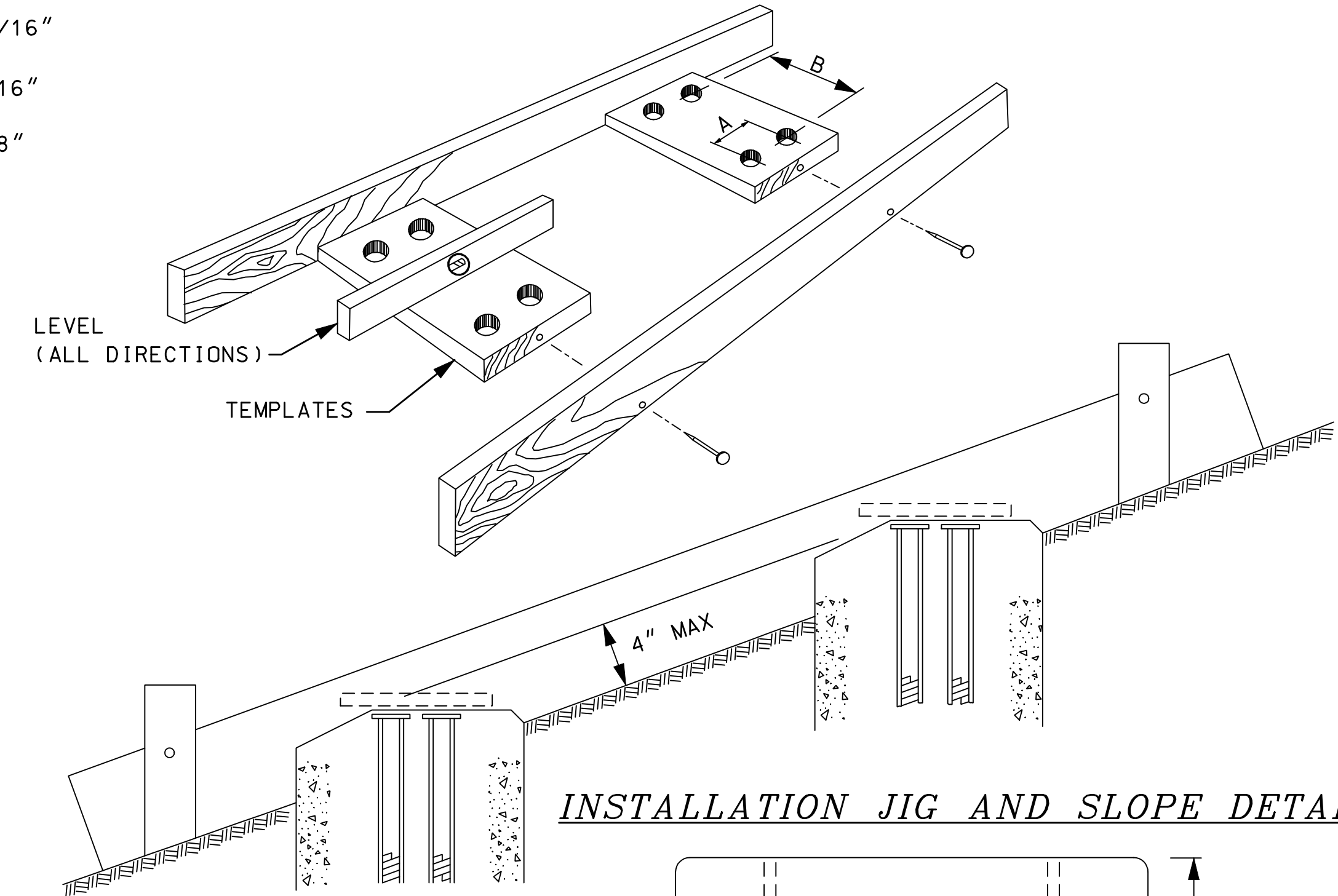


- A = LATERAL SPACING OF ANCHORS
- 3" FOR B-525 USED ON 6" & 8" WIDE FLANGE POSTS
- 4" FOR B-650 USED ON 10", 12" & 14" WIDE FLANGE POSTS
- 4-1/4" FOR A16 USED ON W6x9 WIDE FLANGE POSTS
- 3-1/4" FOR AP x 4-1/2" USED ON 4" DIAMETER ALUMINUM TUBE.
- B = LONGITUDINAL SPACING OF ANCHORS
- * BRACKET #1 - DEPTH OF POST SECTION PLUS 7-15/16"
- * BRACKET #2 - DEPTH OF POST SECTION PLUS 8-1/16"
- * BRACKET #3 - DEPTH OF POST SECTION PLUS 8-1/8"
- DEPTH OF POST SECTION PLUS 3-3/4" FOR A16
- * FOR B-525 & B-650 MOUNTS, SEE BRACKET TABLES



MAXIMUM BREAKAWAY STUB HEIGHT

BREAKAWAY SUPPORTS PLACED ON ROADSIDE SLOPES SHALL NOT ALLOW IMPACTING VEHICLES TO SNAG ON EITHER THE FOUNDATION OR ANY SUBSTANTIAL REMAINS OF THE SUPPORT. SURROUNDING TERRAIN SHALL BE GRADED TO PERMIT VEHICLES TO PASS OVER ANY NON-BREAKAWAY PORTION OF THE SIGN INSTALLATION WHICH REMAINS IN THE GROUND OR RIGIDLY ATTACHED TO THE FOUNDATION.



INSTALLATION JIG AND SLOPE DETAIL

PLAN VIEW OF FOOTINGS

(SEE PS-3, PS-5A, OR PS-5B FOR FOOTING SIZES)

6" POST
POST LENGTH = L+ H(FT)

	10	11	12	13	14	15	16	17	18	19	20	21	22	23	24	25
3																
4																
5																
6																
7												1				
8																
9																
10													2			
11																
12																
13																
14																
15																

8" POST
POST LENGTH = L+ H(FT)

	10	11	12	13	14	15	16	17	18	19	20	21	22	23	24	25
3																
4																
5																
6																
7																
8																
9																
10																
11																
12																
13																
14																
15																

BRACKET TABLES FOR B-525-LP MOUNTS

10" POST
POST LENGTH = L+ H(FT)

	10	11	12	13	14	15	16	17	18	19	20	21	22	23	24	25
3																
4																
5																
6																
7																
8																
9																
10																
11																
12																
13																
14																
15																

12" POST
POST LENGTH = L+ H(FT)

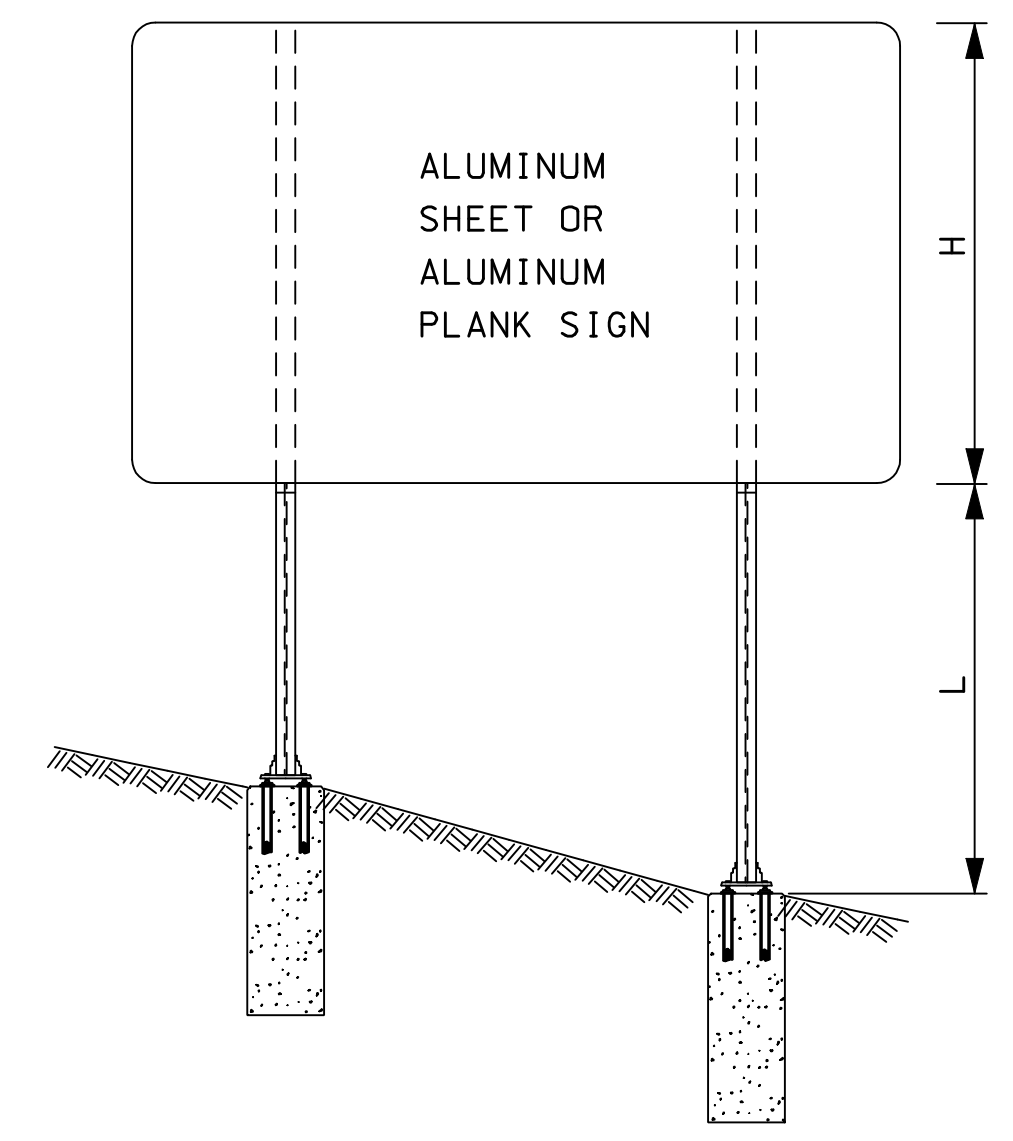
	10	11	12	13	14	15	16	17	18	19	20	21	22	23	24	25
3																
4																
5																
6																
7																
8																
9																
10																
11																
12																
13																
14																
15																

14" POST
POST LENGTH = L+ H(FT)

	10	11	12	13	14	15	16	17	18	19	20	21	22	23	24	25
3																
4																
5																
6																
7																
8																
9																
10																
11																
12																
13																
14																
15																

BRACKET TABLES FOR B-650-LP MOUNTS

SELECT CORRECT BRACKET NUMBER BY LOCATING THE INTERSECTION OF SIGN HEIGHT AND POST LENGTH IN THE BRACKET SELECTION MATRIX. THE INTERSECTION WILL BE EITHER ZONE 1, 2, OR 3 WHICH CORRESPONDS TO BRACKET NUMBERS 1, 2, OR 3.



SIGNING STANDARD

BREAKAWAY MOUNTS