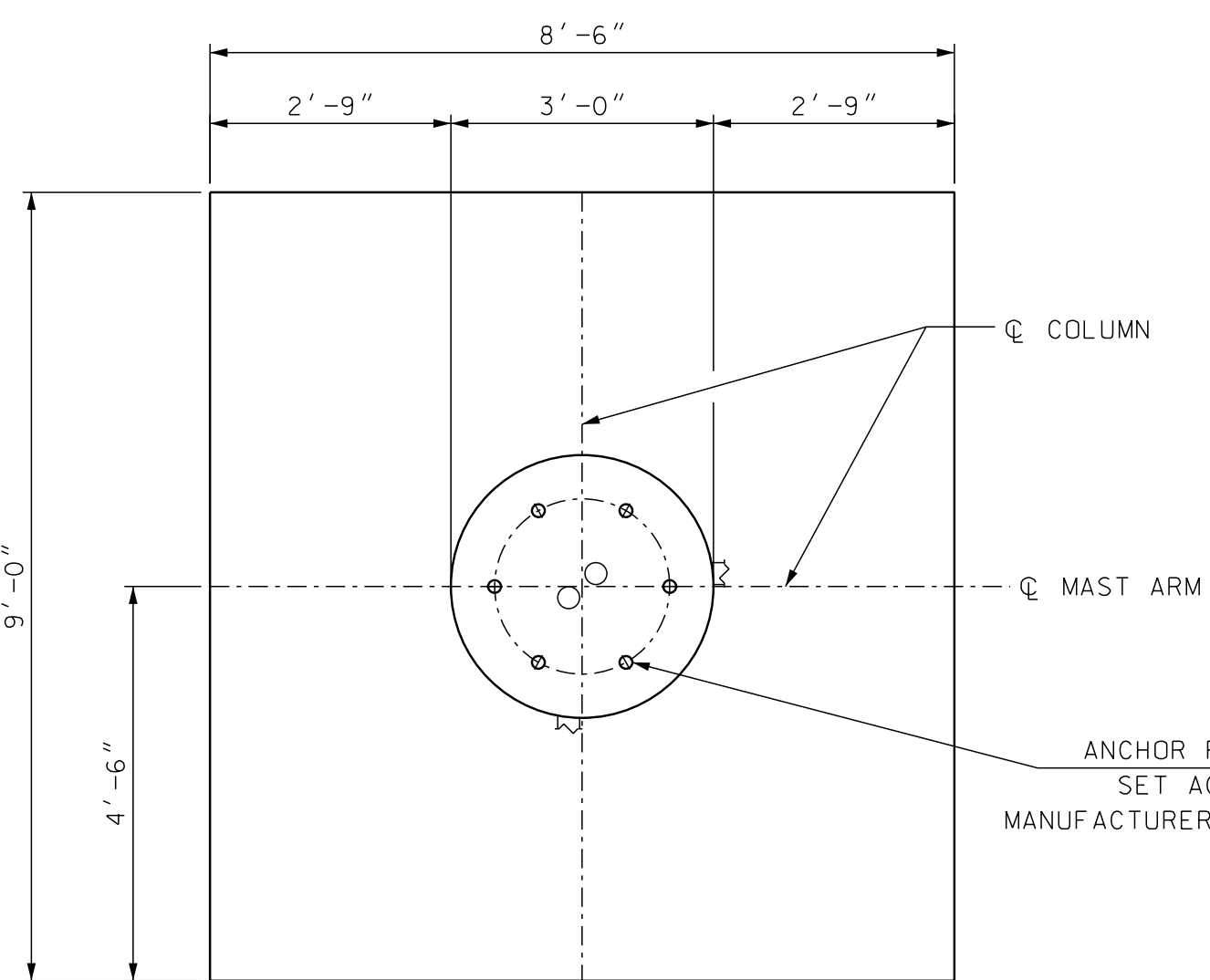


TRAFFIC SIGNAL MAST ARM FOUNDATION - TYPE 1D



PLAN VIEW

NOTES

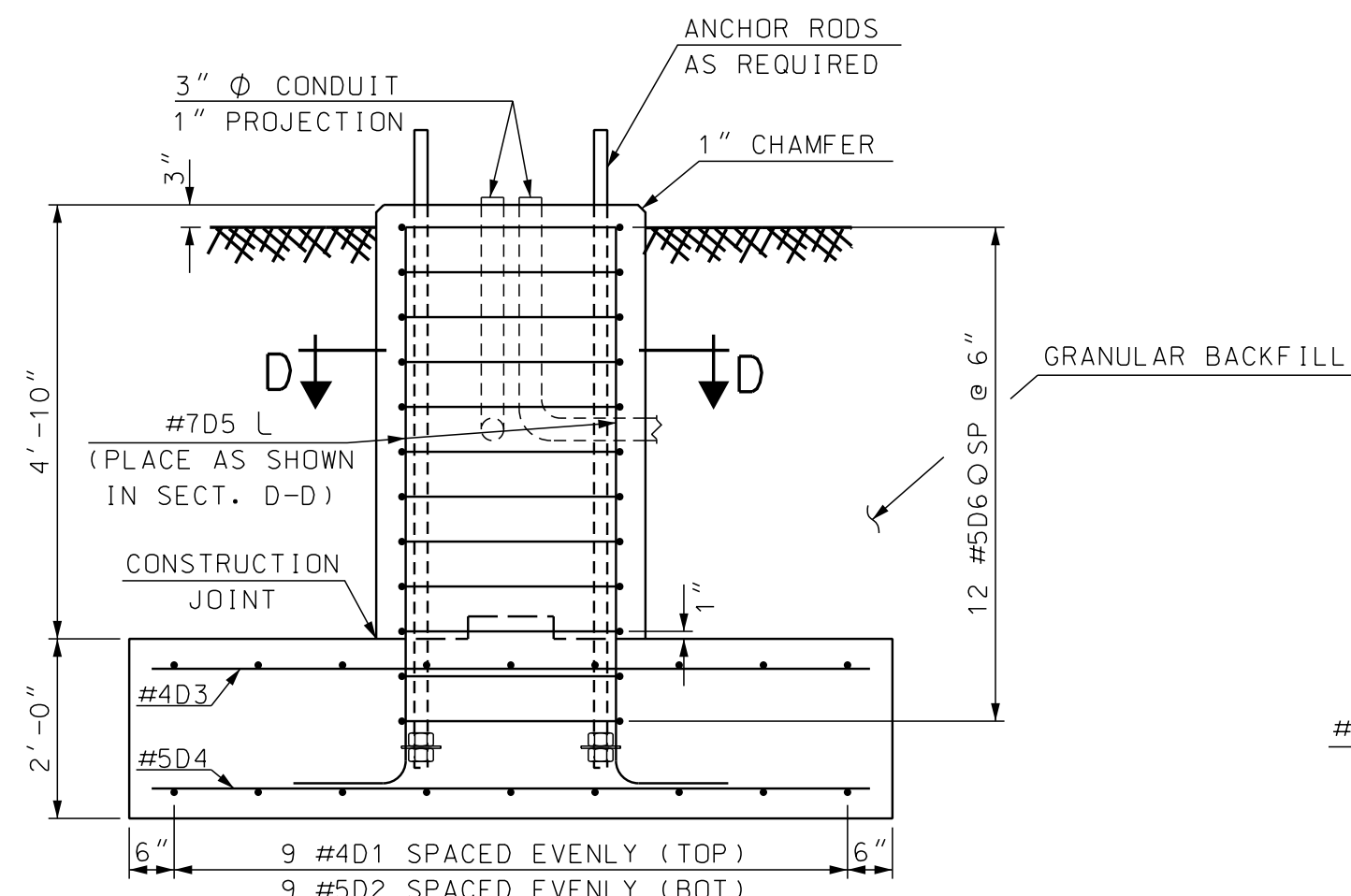
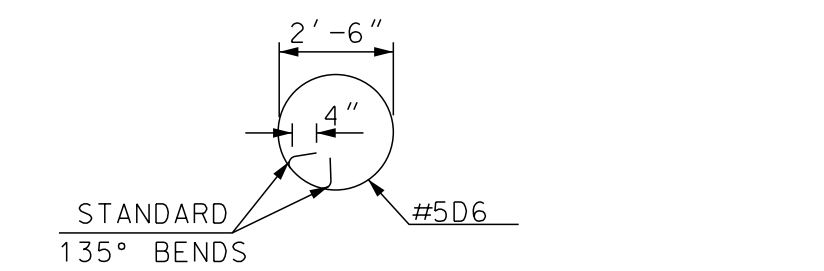
1. SEE MAST ARM FOUNDATION - TYPE 1A STANDARD PLAN TS-1, FOR TYPE 1 FOUNDATION NOTES.

TYPICAL QUANTITIES PER BASE		
ITEM NUMBER	ITEM	QUANTITY
206.1*	COMMON STRUCTURE EXCAVATION	28 CY
209.1*	GRANULAR BACKFILL	21.3 CY
520.21*	CONCRETE CLASS B, FOOTINGS	6.9 CY
544*	REINFORCING STEEL	610 LB

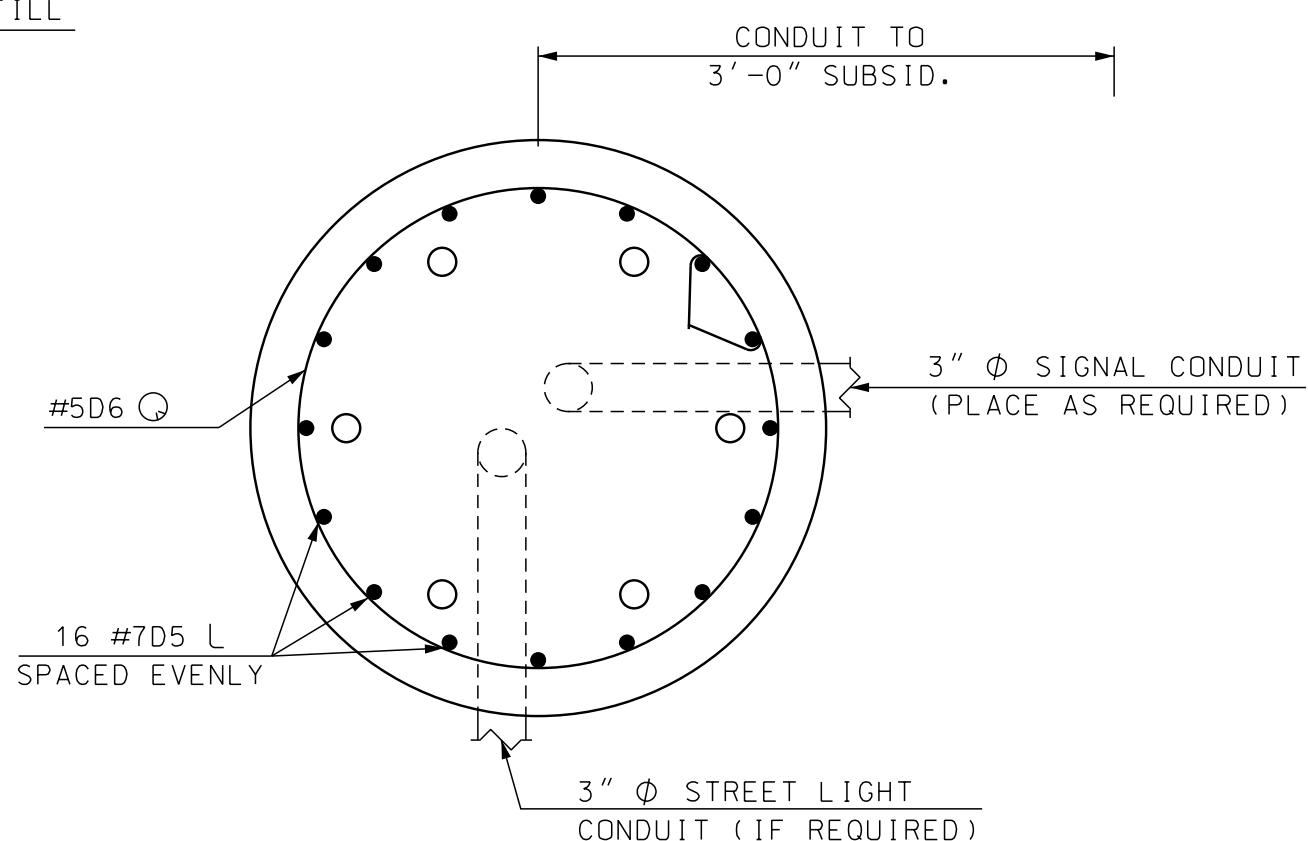
* ITEM NUMBERS ARE FOR SPECIFICATION REFERENCE ONLY. NO SEPARATE PAYMENT WILL BE MADE FOR THESE ITEMS.

TYPE 1D REINFORCING SCHEDULE

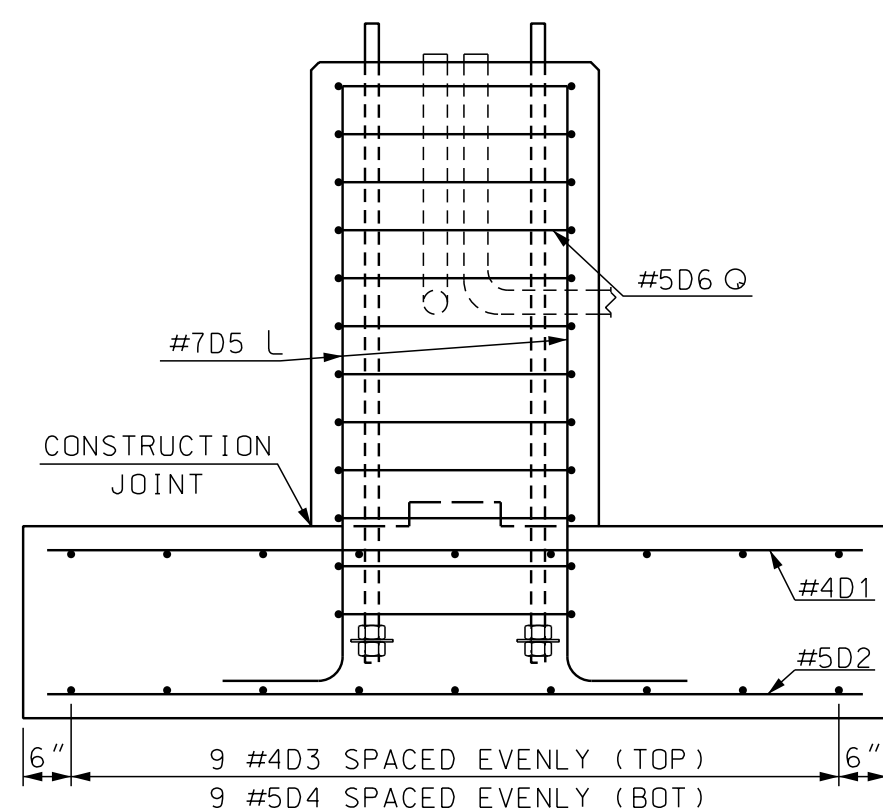
MARK	SIZE	NO.	UNBENT LENGTH	TYPE
D1	#4	9	8'-6"	---
D2	#5	9	8'-6"	---
D3	#4	9	8'-0"	---
D4	#5	9	8'-0"	---
D5	#7	16	7'-4"	L
D6	#5	12	9'-3"	Q



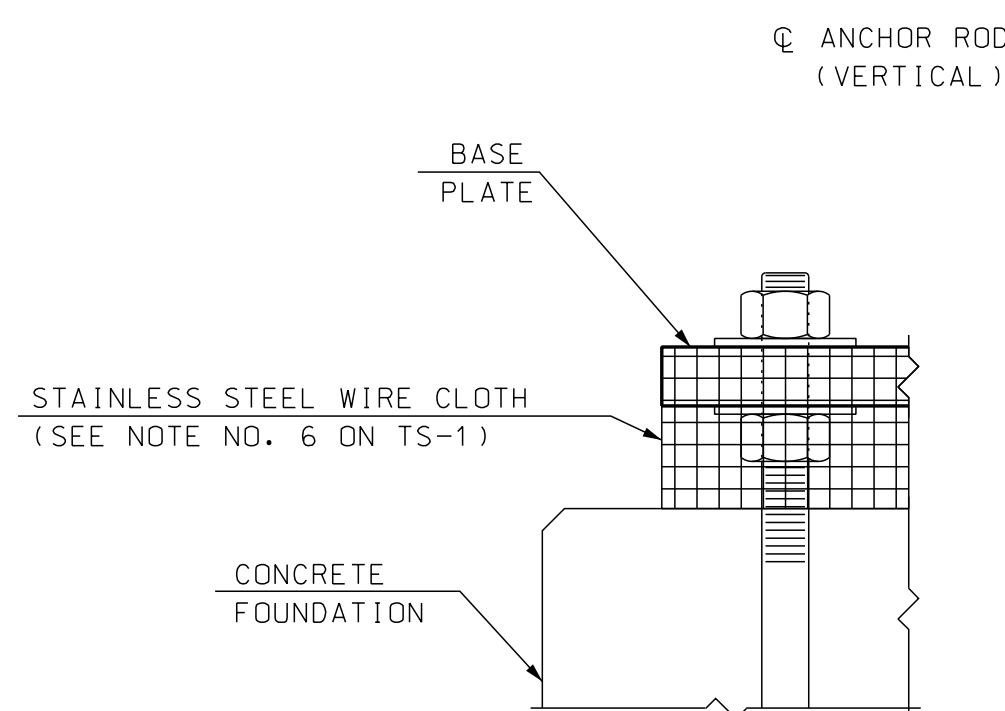
ELEVATION VIEW



SECTION D-D

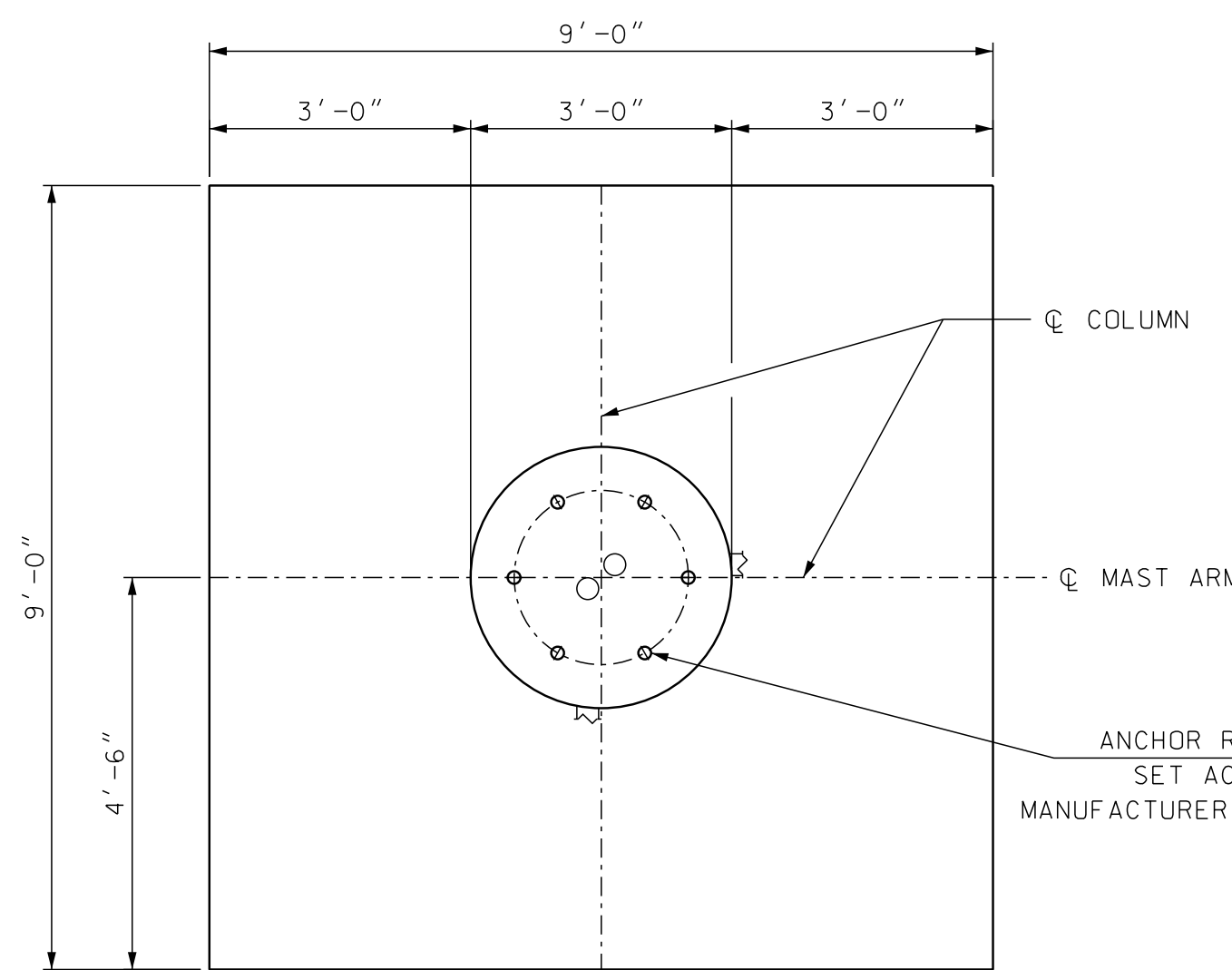


END ELEVATION VIEW



SCREEN DETAIL

TRAFFIC SIGNAL MAST ARM FOUNDATION - TYPE 1E



PLAN VIEW

NOTES

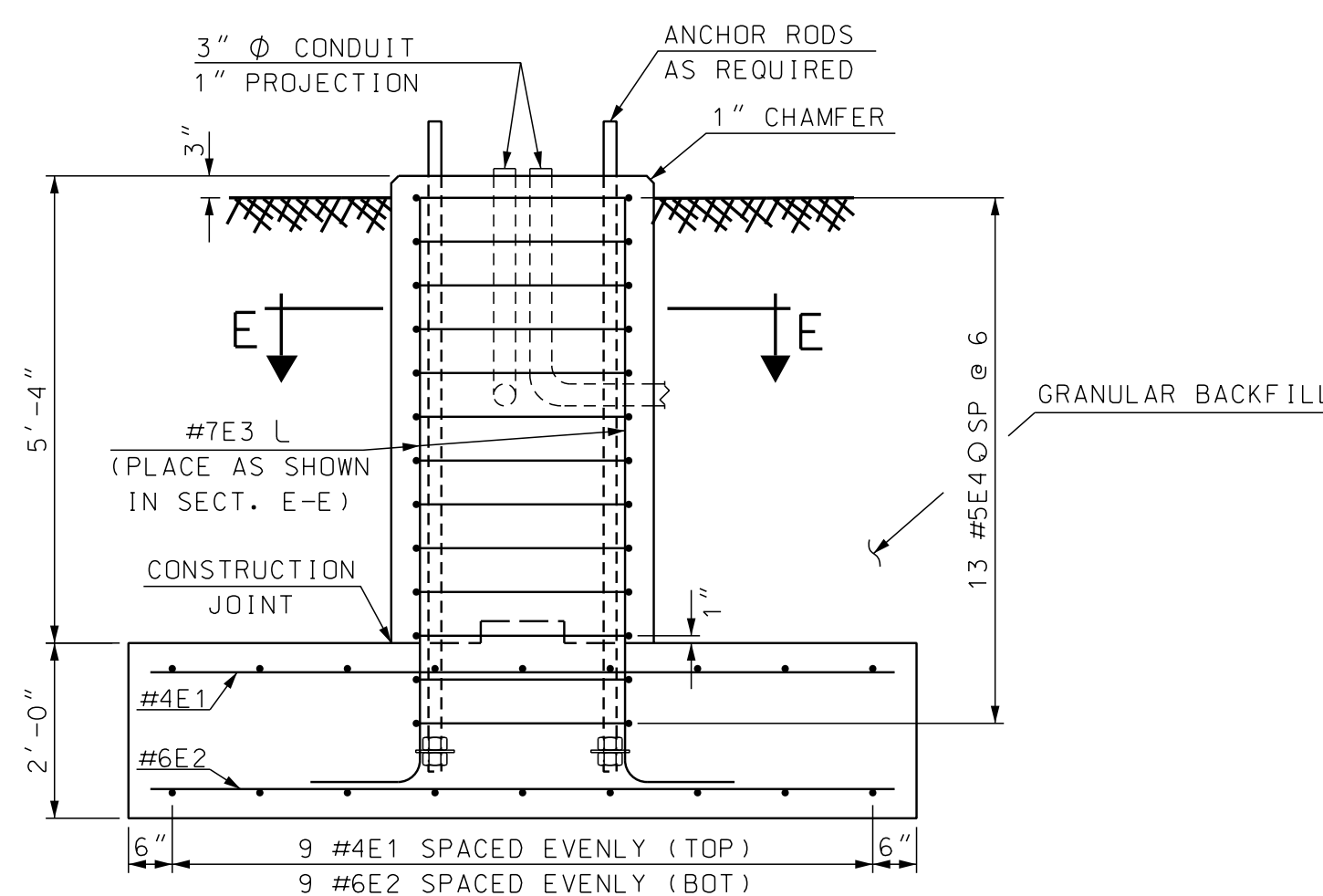
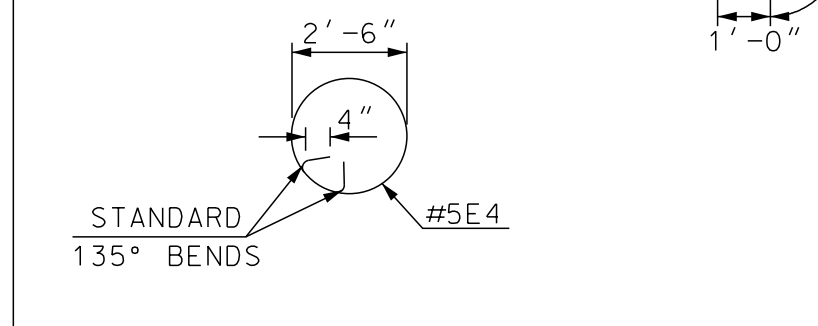
1. SEE MAST ARM FOUNDATION - TYPE 1A STANDARD PLAN TS-1, FOR TYPE 1 FOUNDATION NOTES.

TYPICAL QUANTITIES PER BASE		
ITEM NUMBER	ITEM	QUANTITY
206.1*	COMMON STRUCTURE EXCAVATION	32 CY
209.1*	GRANULAR BACKFILL	24.4 CY
520.21*	CONCRETE CLASS B, FOOTINGS	7.4 CY
544*	REINFORCING STEEL	714 LB

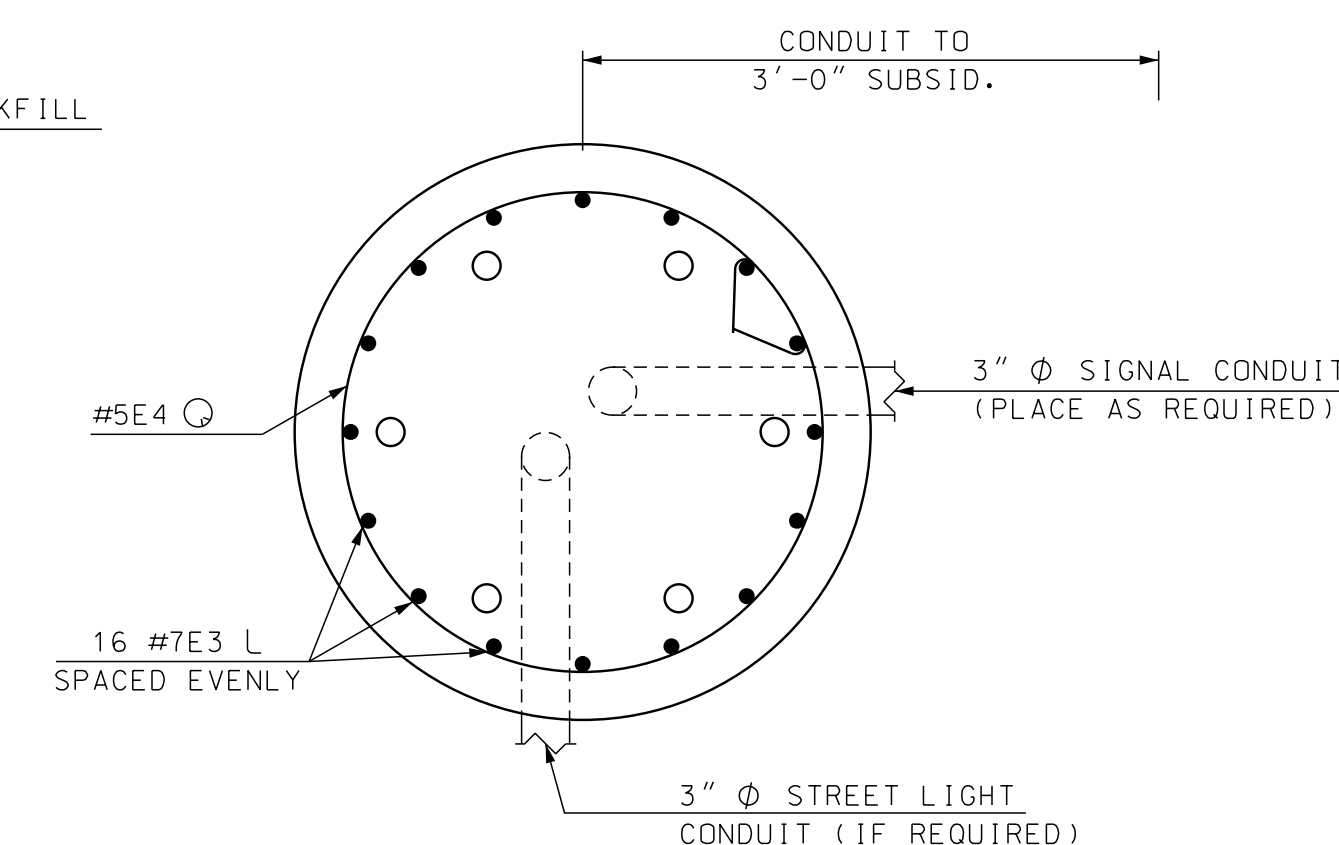
* ITEM NUMBERS ARE FOR SPECIFICATION REFERENCE ONLY. NO SEPARATE PAYMENT WILL BE MADE FOR THESE ITEMS.

TYPE 1E REINFORCING SCHEDULE

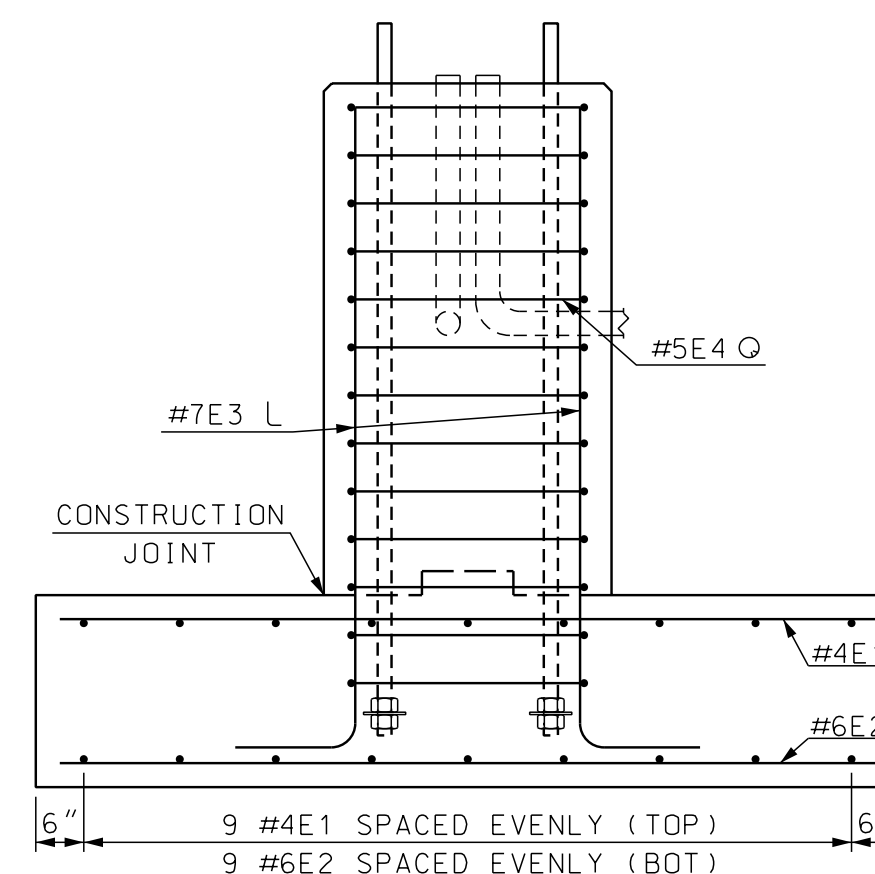
MARK	SIZE	NO.	UNBENT LENGTH	TYPE
E1	#4	18	8'-6"	---
E2	#6	18	8'-6"	---
E3	#7	16	7'-10"	L
E4	#5	13	9'-3"	Q



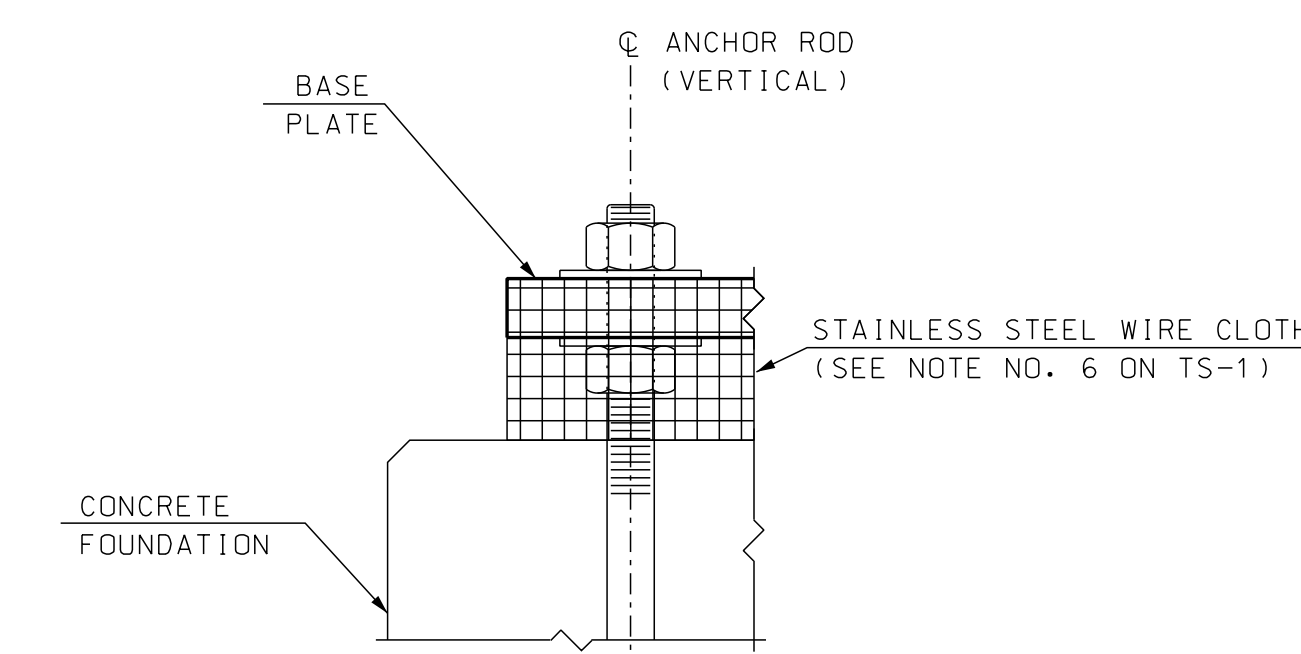
ELEVATION VIEW



SECTION E-E



END ELEVATION VIEW



SCREEN DETAIL

TRAFFIC SIGNAL STANDARD

Traffic Signal Mast Arm Foundations - Type 1D & 1E

STANDARD NO. TS-3

REVISION DATE
07-13-01
02-26-10
10-09-17
01-17-19

*DGN FILE NAME TS-3

STANDARD PLAN

New Hampshire
DOT
Department of Transportation

STANDARD NO. TS-3